

EXHIBIT 9**Internal Photographs**

(Pursuant to FCC Part 2.1033(b)(7), 2.1033(c)(12) and RSP 100 Annex C)

The following photographs are attached.

Exhibit

- | | | |
|-----|---|----|
| 1. | RF board <u>with</u> Shields (Top) | 9A |
| 2. | RF board <u>without</u> Shields (Top) | 9B |
| 3. | RF board <u>with</u> Shields (Bottom) | 9C |
| 4. | RF board <u>without</u> Shields (Bottom) | 9D |
| 5. | RF boards <u>with</u> chassis and control head (Top), Model 1 | 9E |
| 6. | Chassis and control head (Bottom), Model 1 | 9F |
| 7. | RF boards <u>with</u> chassis and control head (Top), Model 2 | 9G |
| 8. | Chassis and control head (Bottom), Model 2 | 9H |
| 9. | RF boards <u>with</u> chassis and control head (Top), Model 3 | 9I |
| 10. | Chassis and control head (Bottom), Model 3 | 9J |
| 11. | GOB Board (Top) | 9K |
| 12. | GOB Board with Shield (Bottom) | 9L |
| 13. | GOB Board without Shield (Bottom) | 9M |
| 14. | Exploded view of radio | 9N |
| 15. | Exploded view of alphanumeric display control head | 9O |
| 16. | Exploded view of numeric display control head | 9P |

Exhibit 9A - RF board with Shields (Top)

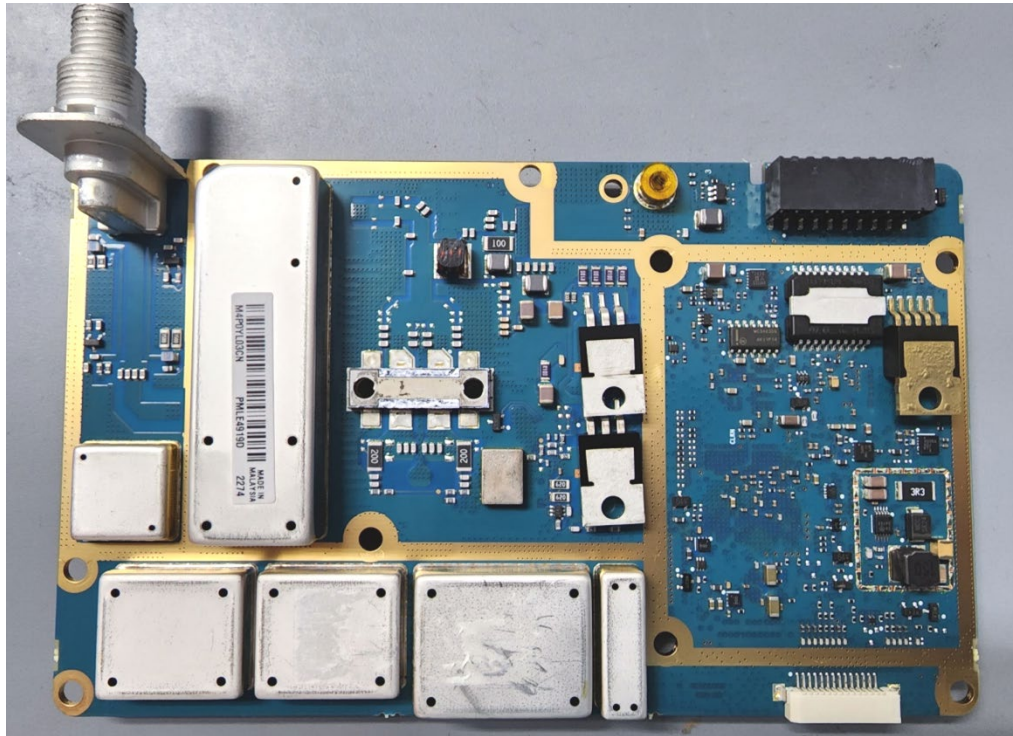


Exhibit 9B - RF board without Shields (Top)

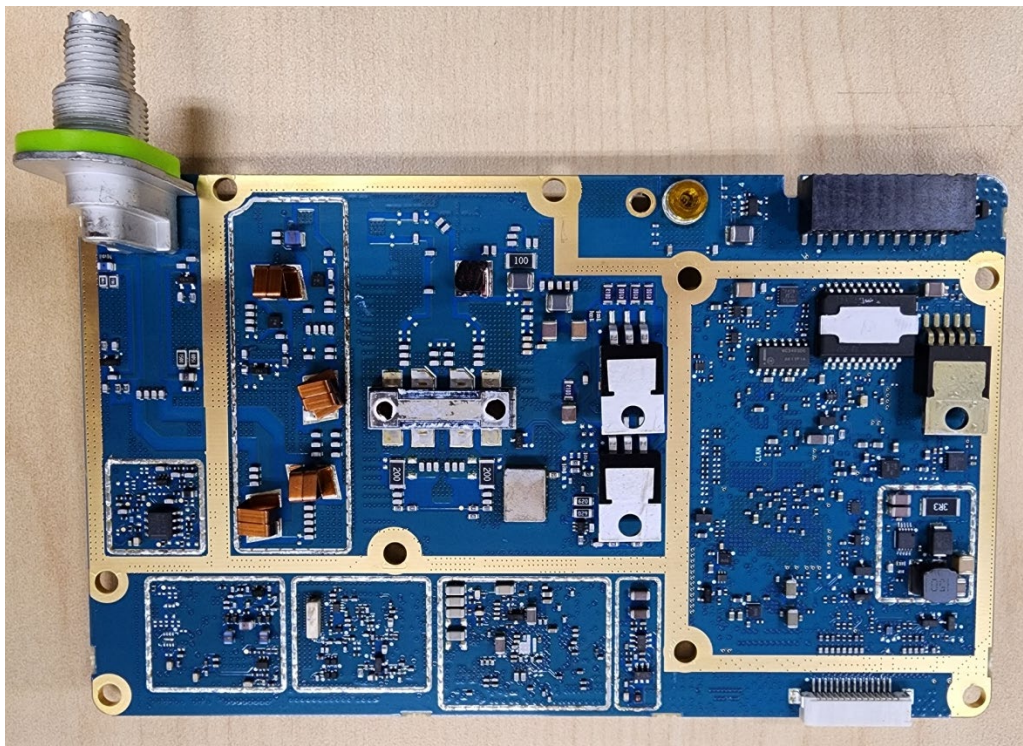


Exhibit 9C - RF board with Shields (Bottom)

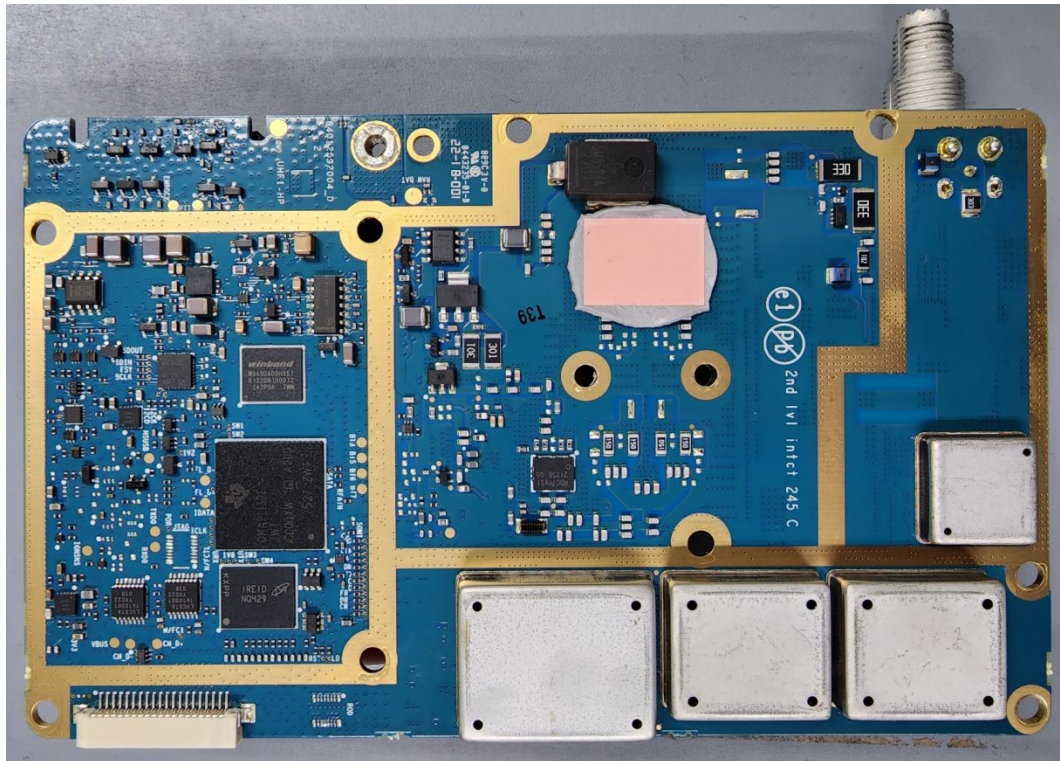


Exhibit 9D - RF board without Shields (Bottom)

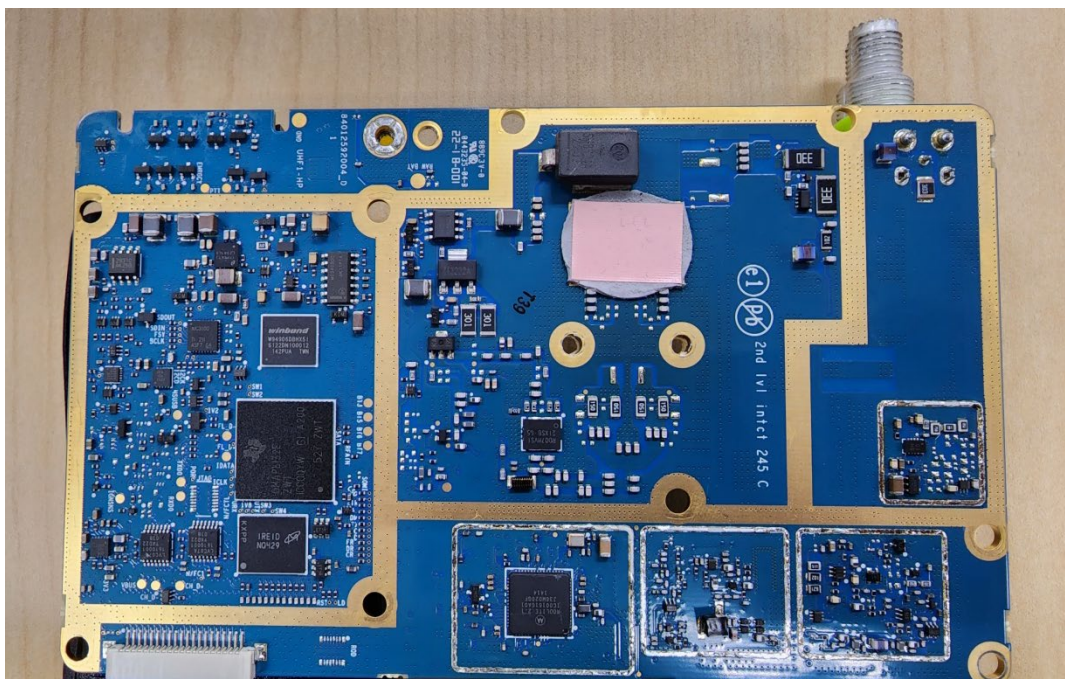
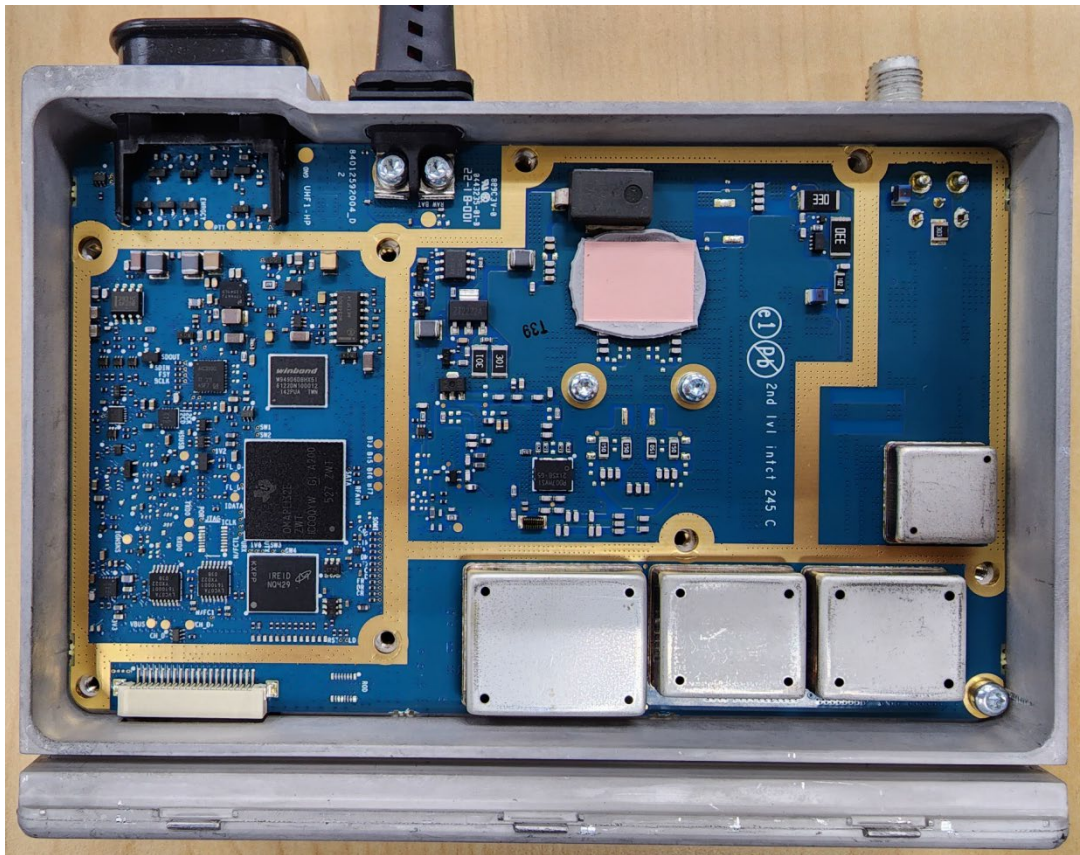
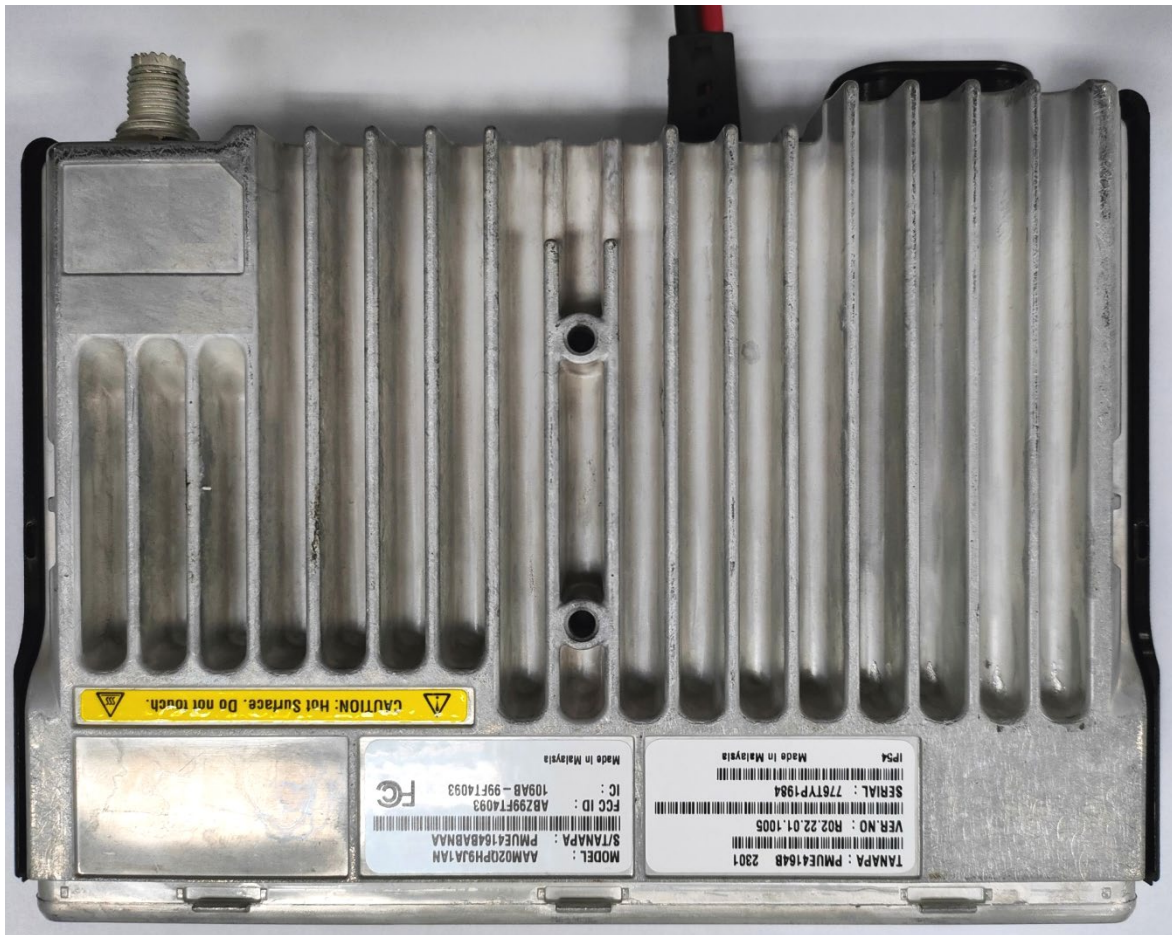


Exhibit 9E - RF boards with chassis and control head (Top), Model 1



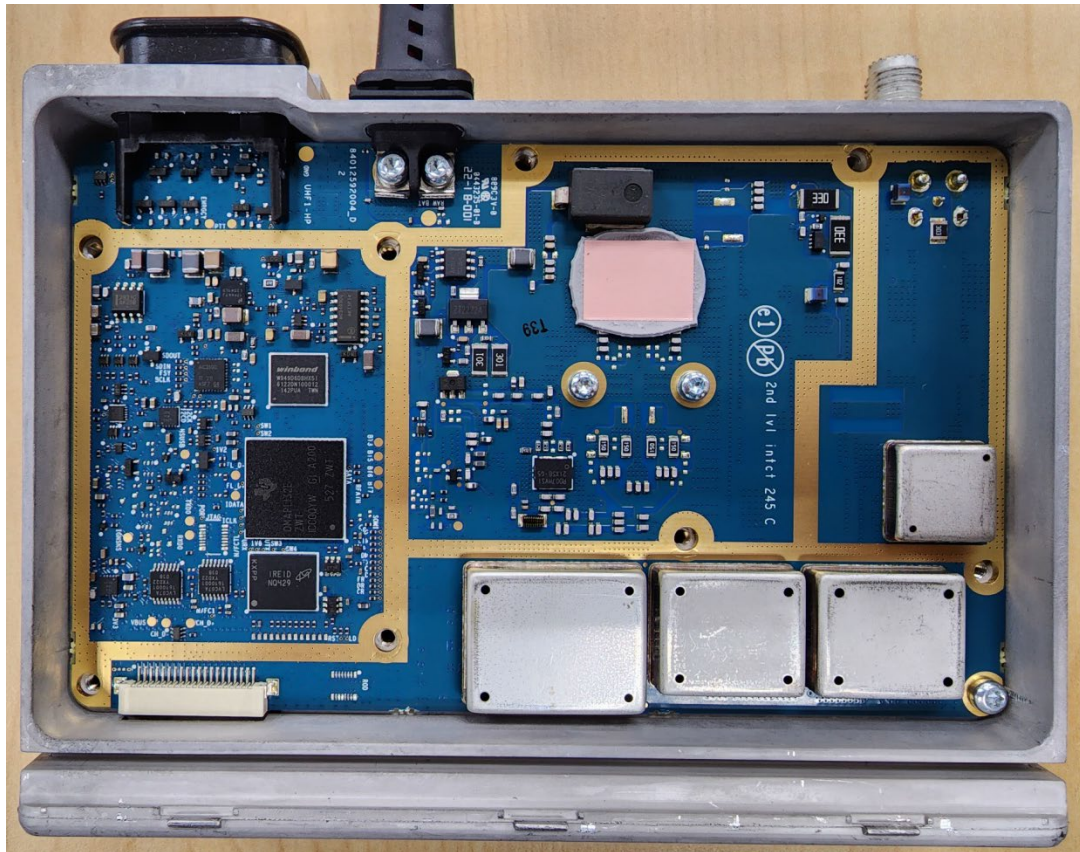
(XPR 2500)

Exhibit 9F - Chassis and control head (Bottom), Model 1



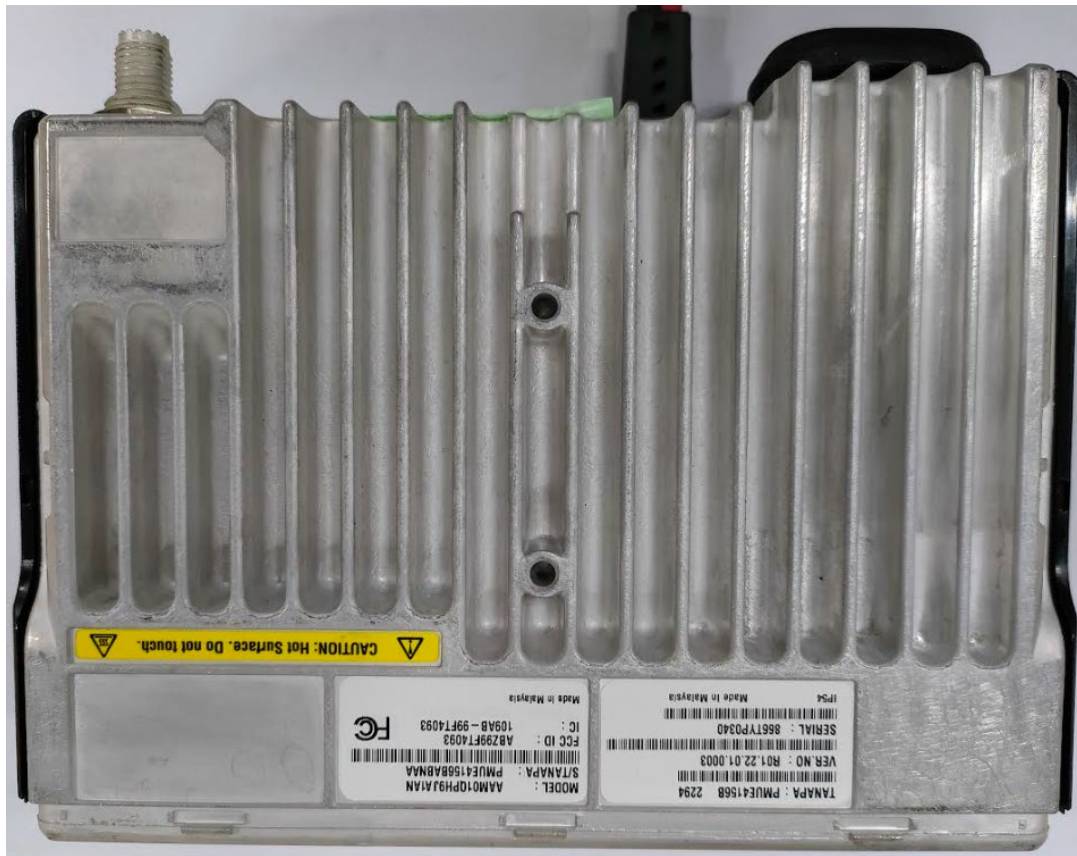
(XPR 2500)

Exhibit 9G - RF boards with chassis and control head (Top), Model 2



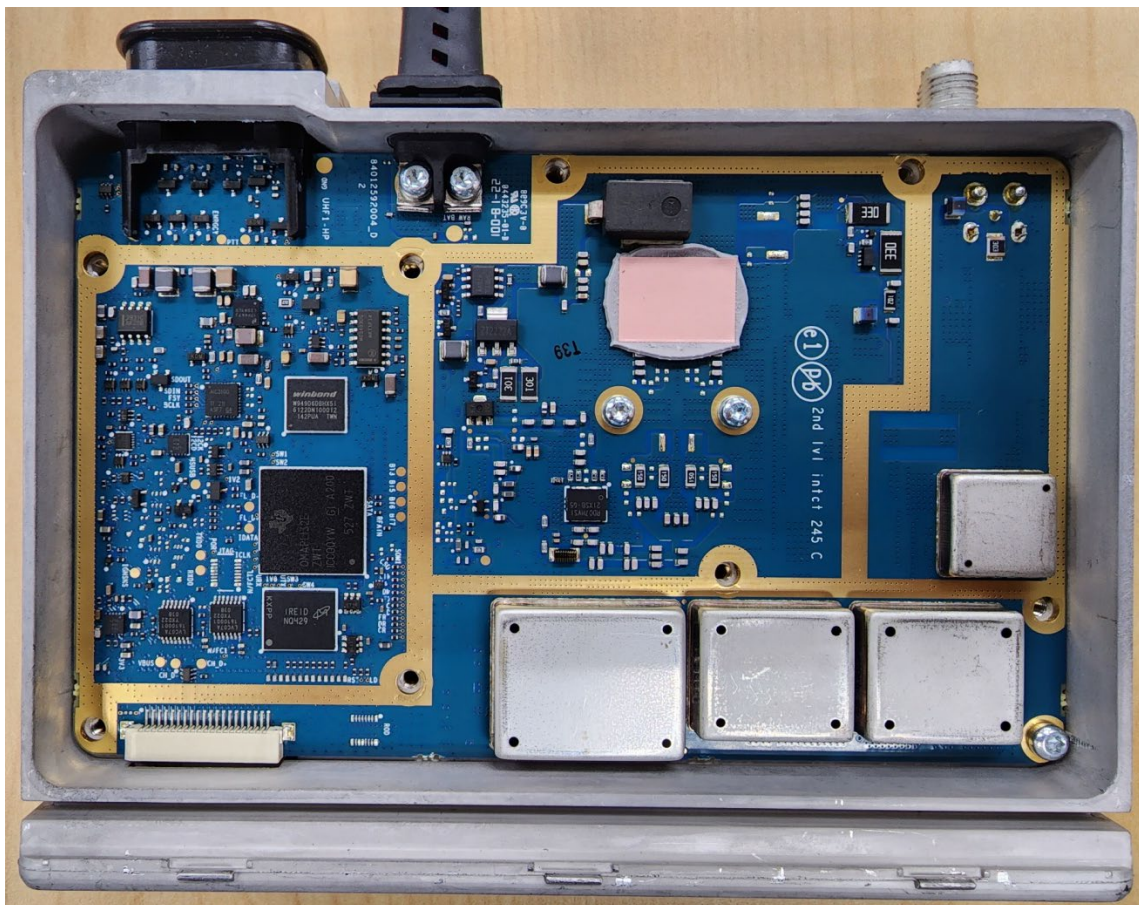
(CM300d)

Exhibit 9H - Chassis and control head (Bottom), Model 2



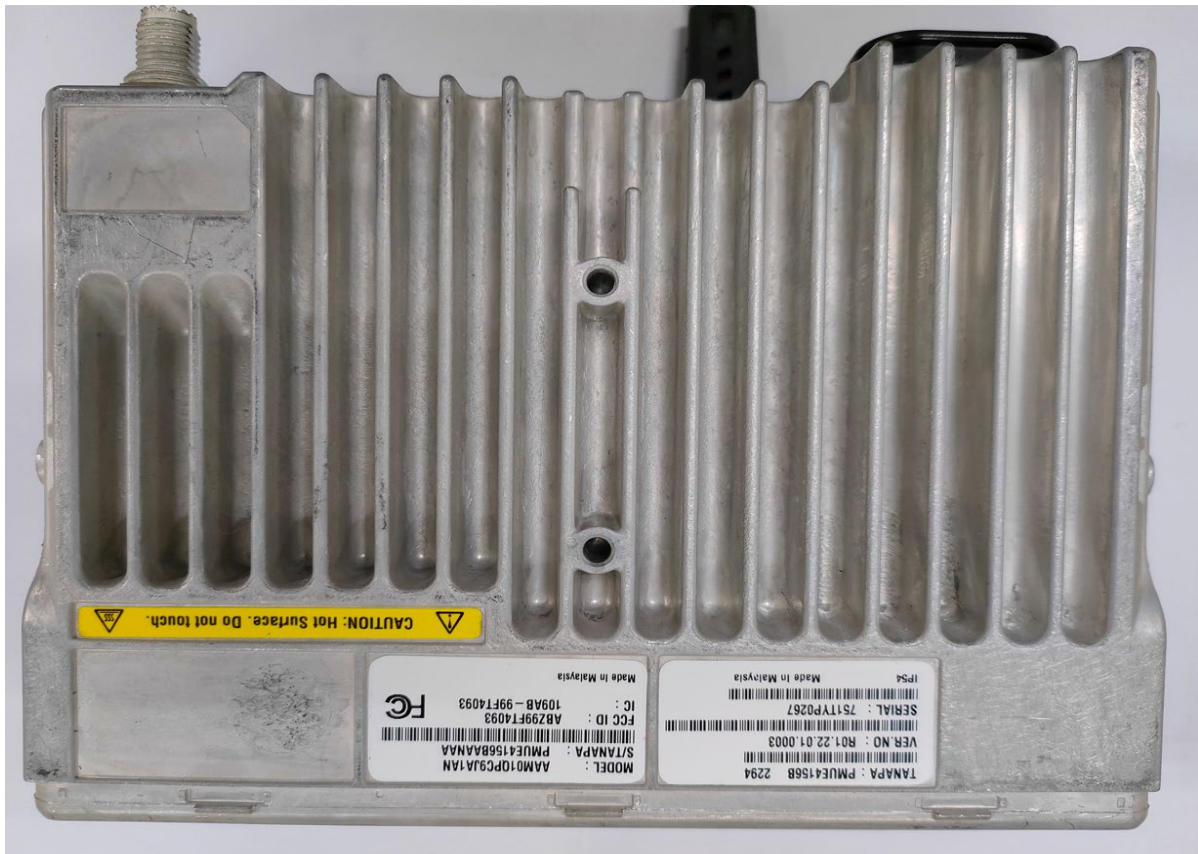
(CM300d)

Exhibit 9I - RF boards with chassis and control head (Top), Model 3



(CM200d)

Exhibit 9J - Chassis and control head (Bottom), Model 3



(CM200d)

Exhibit 9K - GOB board (Top)

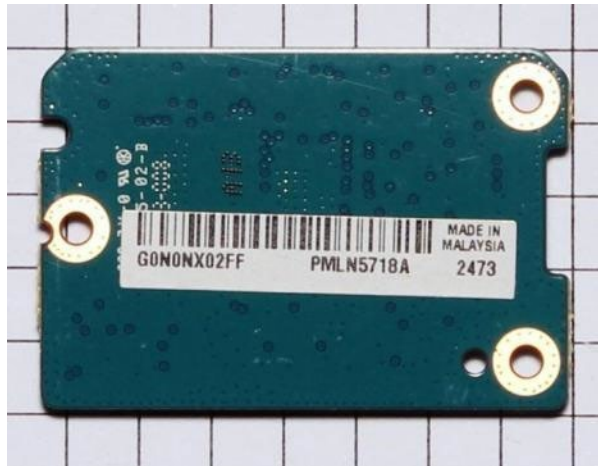


Exhibit 9L - GOB board with Shield (Bottom)

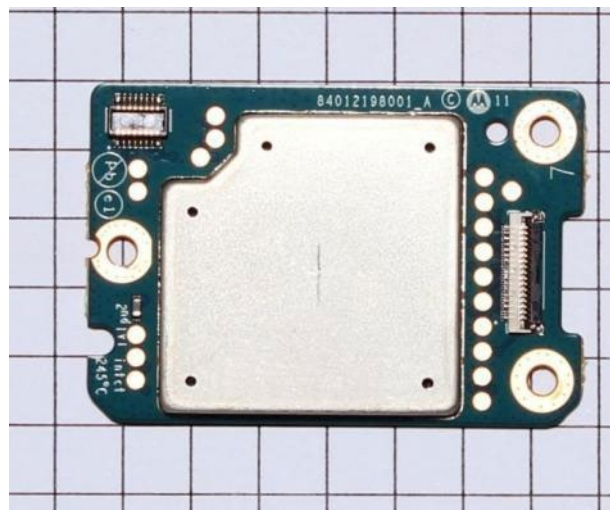


Exhibit 9M - GOB board without Shield (Bottom)

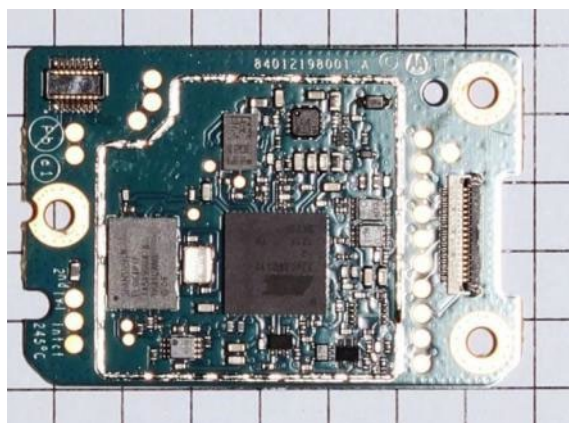


Exhibit 9N – Exploded view of Radio

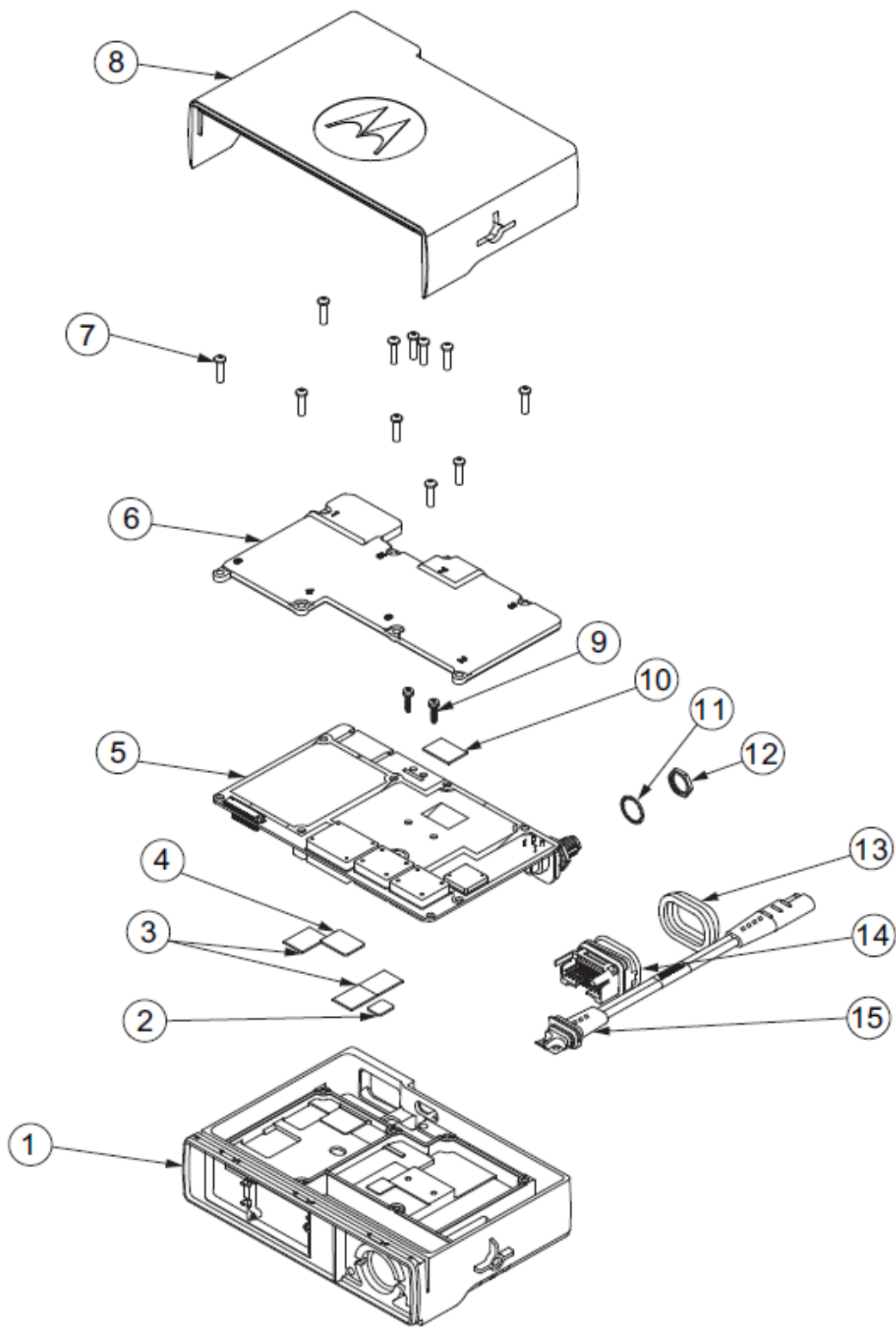


Exhibit 9O - Exploded view of Alphanumeric Display control head

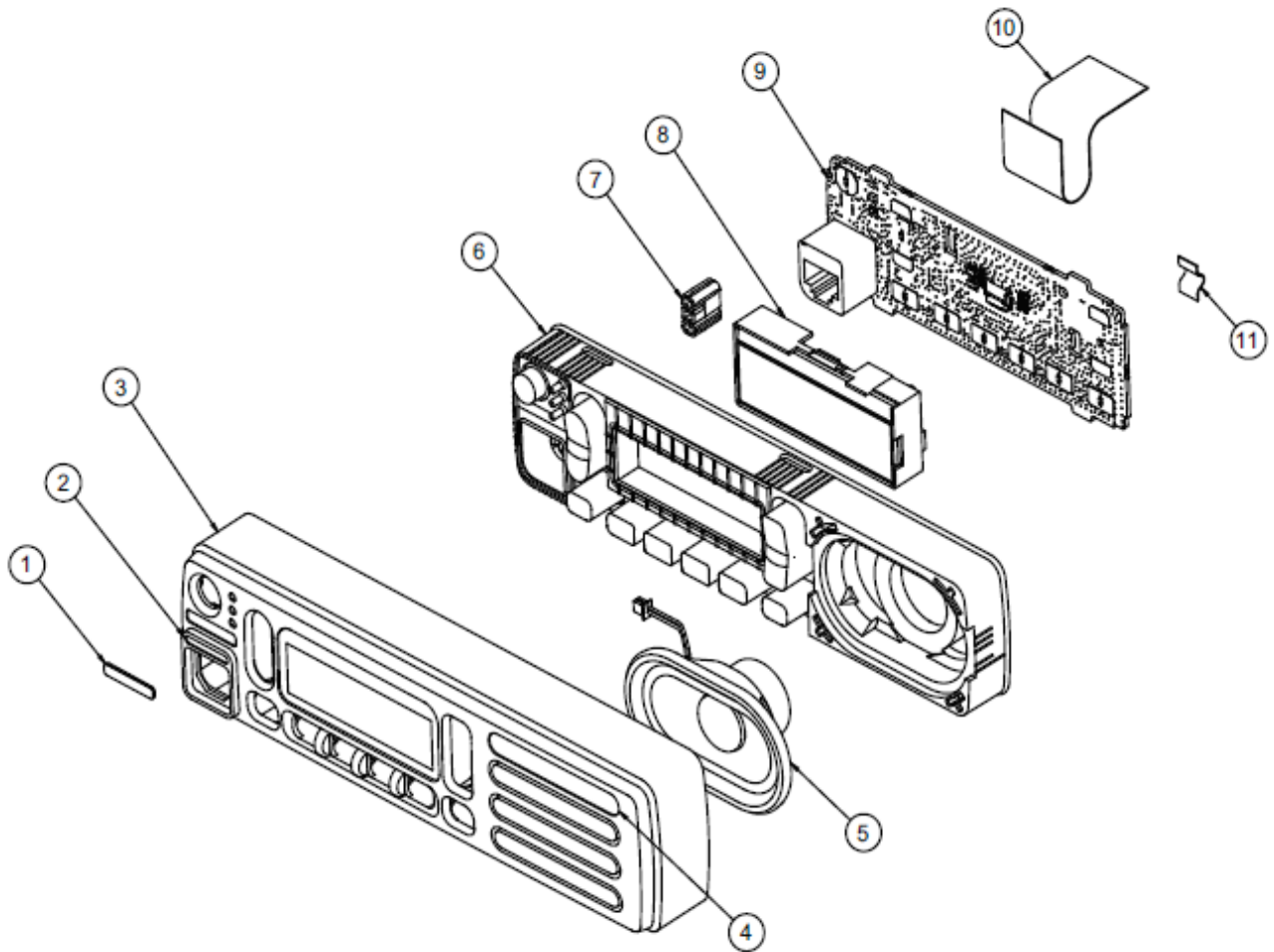


Exhibit 9P - Exploded view of Numeric Display control head

