

FCC ID : MMFSATOTR3
Model : TR3-C101
Type of Equipment : RFID Reader/Writer Module
Applicant : SATO CORPORATION

Date: July 9, 2004

Request for Limited Modular Approval

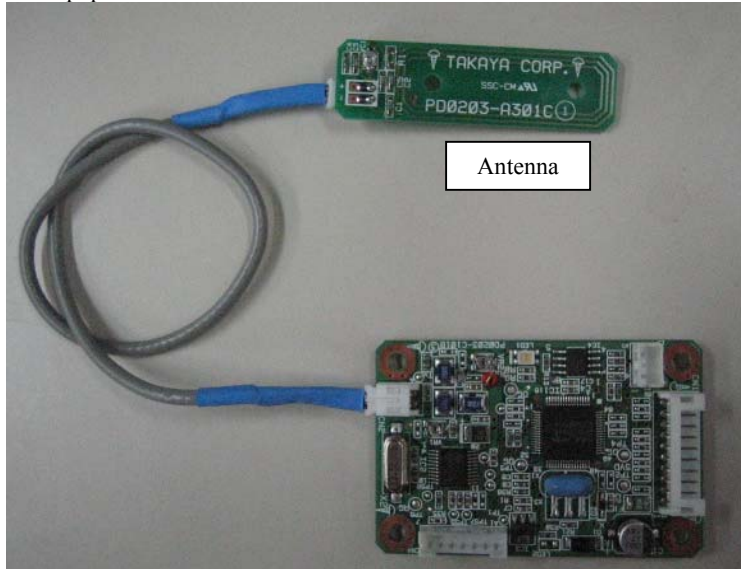
The modular transmitter is designed by SATO CORPORATION.

This modular transmitter will be equipped only on tabletop Printer which is produced by SATO CORPORATION or by the manufacturer consigned the production by SATO CORPORATION.

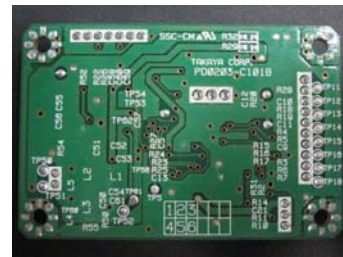
The modular transmitter complies the module basic requirement (Item 1 to 8) in FCC Public Notice: Part 15 Unlicensed Modular Transmitter Approval(DA00-1407) as indicated below:

Module Basic Requirement

- (1) Have its own RF shielding.: Although RF module itself is not shielded, the module complies with FCC requirements as standalone. The equipment with which the module is used is limited.



RFID Reader/Writer Module



Rear Side of RFID Reader/Writer Module

- (2) The modular transmitter must have buffered modulation/data inputs.: Data input to the modular transmitter is controlled as not generating excessive data speed and abnormal modulation.
- (3) The modular transmitter must have its own power supply regulation.:
The modular transmitter does not have its own power supply, but regulated power of 5.0V is supplied from host equipment tabletop printer. Therefore, the equipment meets this requirement.
- (4) The modular transmitter must comply with the antenna requirements of Section 15.203 and 15.204(c).: The modular transmitter is installed in the end product by the professionals. Neither antenna nor cable is to be exchanged with any other replacement. Length of the cable remains 30cm.
- (5) The modular transmitter must be tested in a stand alone.: The modular transmitter has been performed the testing as a stand alone and then confirmed the compliance. Please refer to the Test report. (No. 24HE0268-HO-1)
- (6) The modular transmitter must be labeled with its own FCC ID number, and, if the FCC ID is not visible when The module is installed inside another device, then the outside of the device into which the module is installed must also display a label referring to the enclosed module.: This modular transmitter is labeled with its own FCC ID number. Please refer to the label drawing and location. In addition, the host equipment, tabletop printer into which the module is installed also displays a label referring to the enclosed module.
- (7) The modular transmitter must comply with any specific rule or operating requirements applicable to the transmitter and the manufacturer must provide adequate instructions along with the module to explain any such requirements.: The necessary explanation to be complied with this requirement is contained in the user's manual of the end product and the installation manual.
- (8) The modular transmitter must comply with any applicable RF exposure requirements.:
Limits for General Population / Uncontrolled Exposure. Limit (E) = $824/13.56\text{MHz} = 60.8\text{V/m}$
Measurement result: $f\ 13.56\text{MHz}\ 60.7\text{dBuV/m(at }10\text{m)} \ll \text{Limits for General Population}$
EUT is complied with FCC requirements. Please refer to test report. (No.24HE0268-HO-1)

K. YAMADA

Keisuke Yamada
Senior Manager, R&D Division
SATO CORPORATION