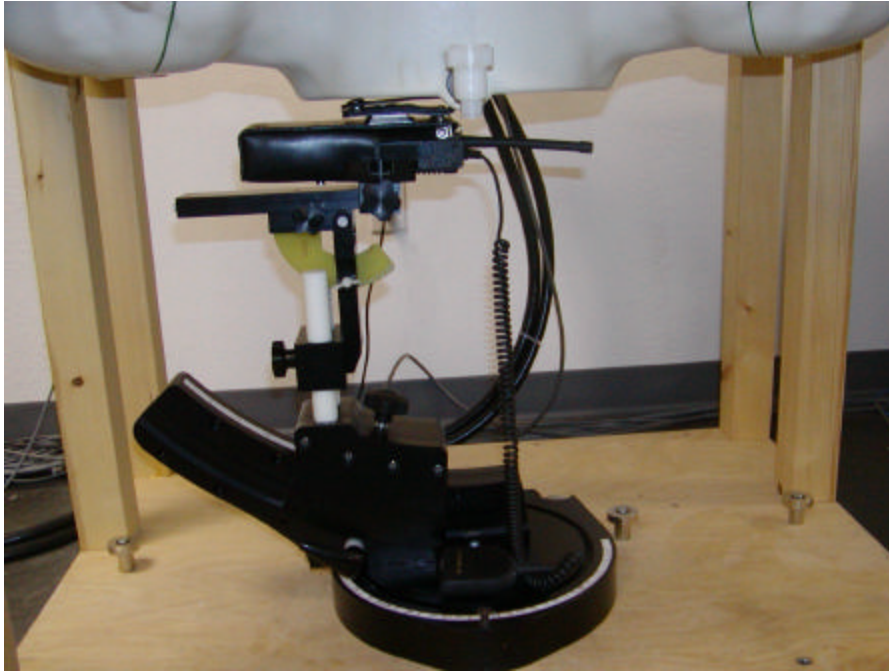


EXHIBIT A - SAR SETUP PHOTOGRAPHS

Body-worn with accessories – Leather Case, belt-clip and microphone:

Setup Entire View



Setup Side View

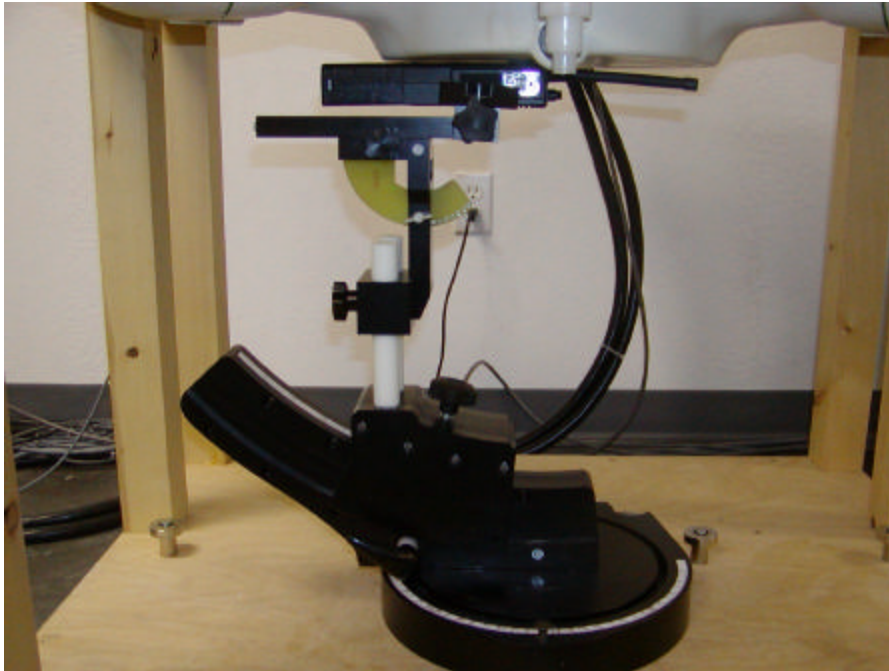


Setup Top View



Body-worn:

Setup Entire View

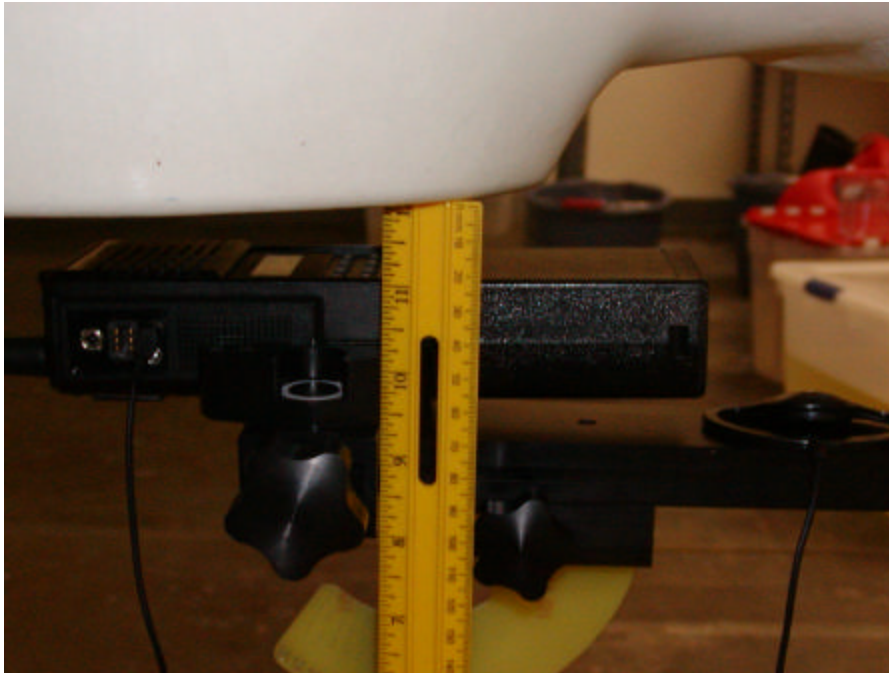


Setup Side View



Setup Top View



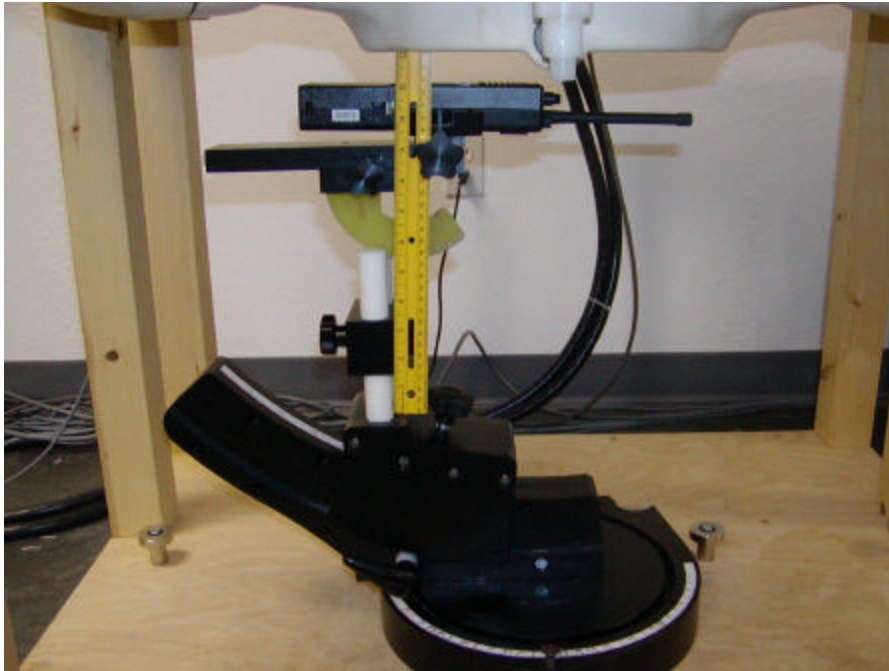
2.5cm Separation face-held with earphone:**Setup Entire View****Setup Side View**

Setup Top View



2.5cm Separation face-held

Setup Entire View



Setup Side View



Setup Top View



EXHIBIT B - EUT PHOTOGRAPHS

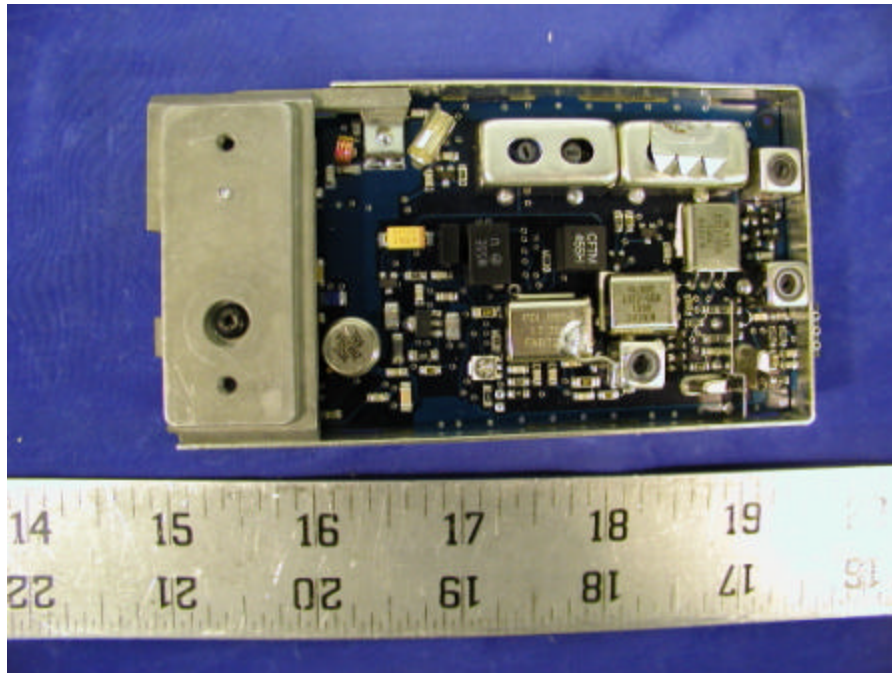
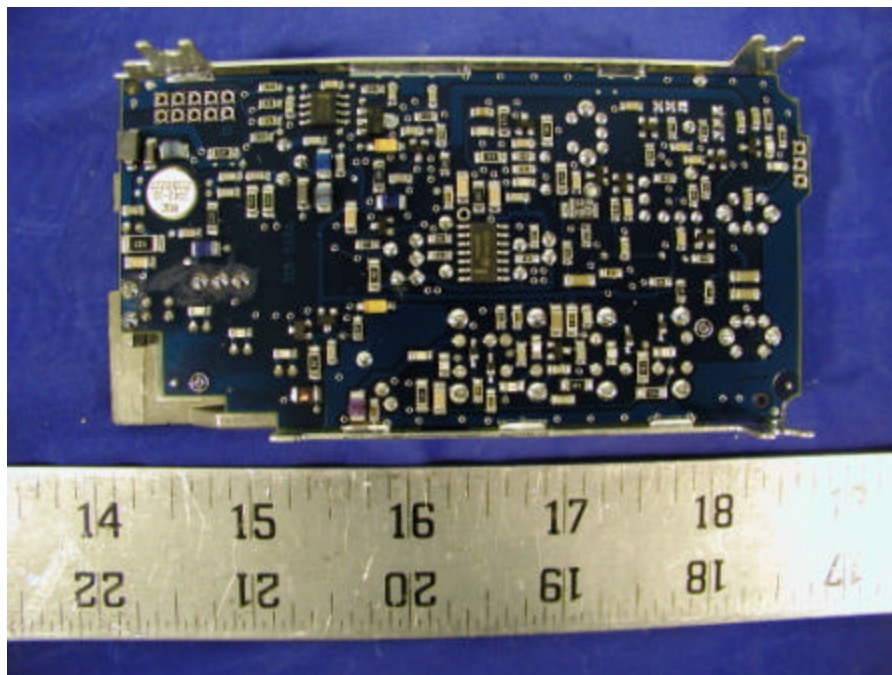
Chassis - Front View



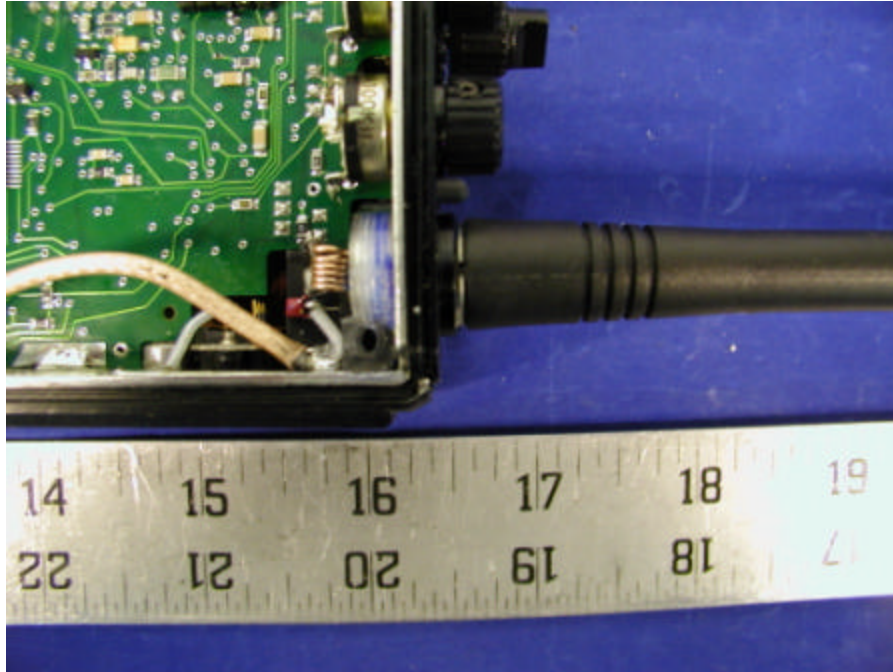
Chassis - Back View



Chassis - Top View**Chassis - Side View**

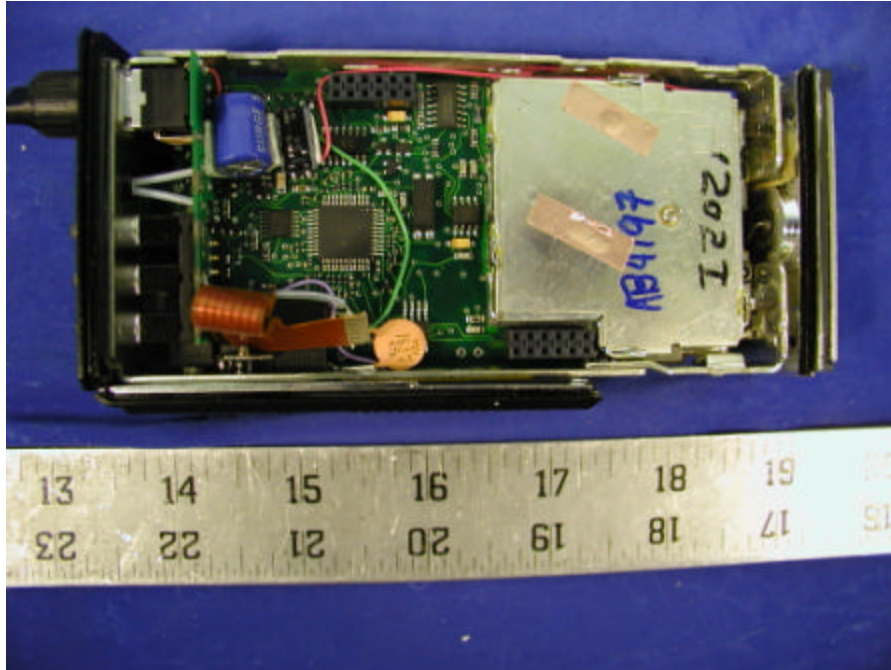
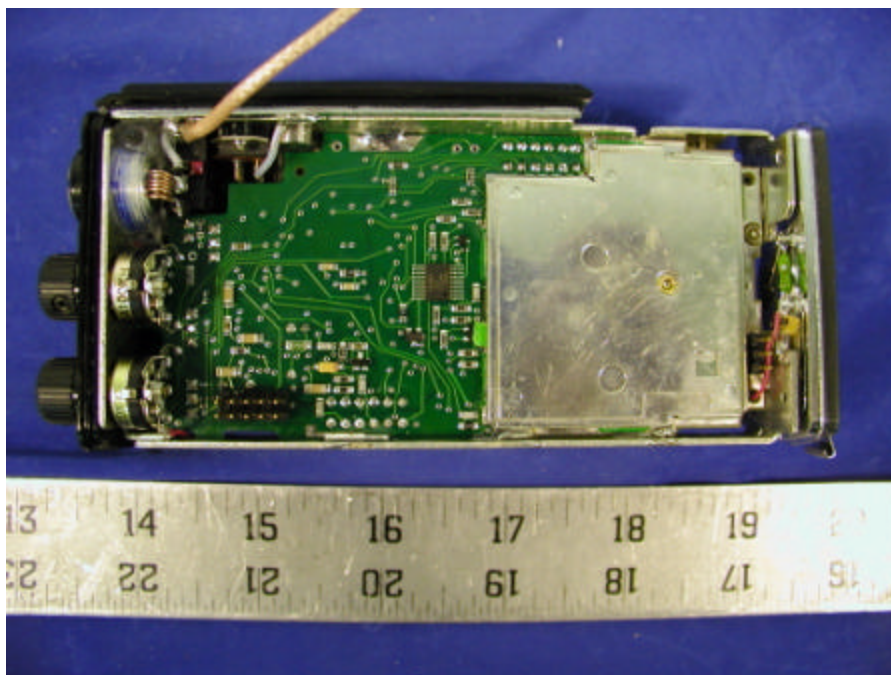
Transceiver Board - Component View**Transceiver Board - Solder View**

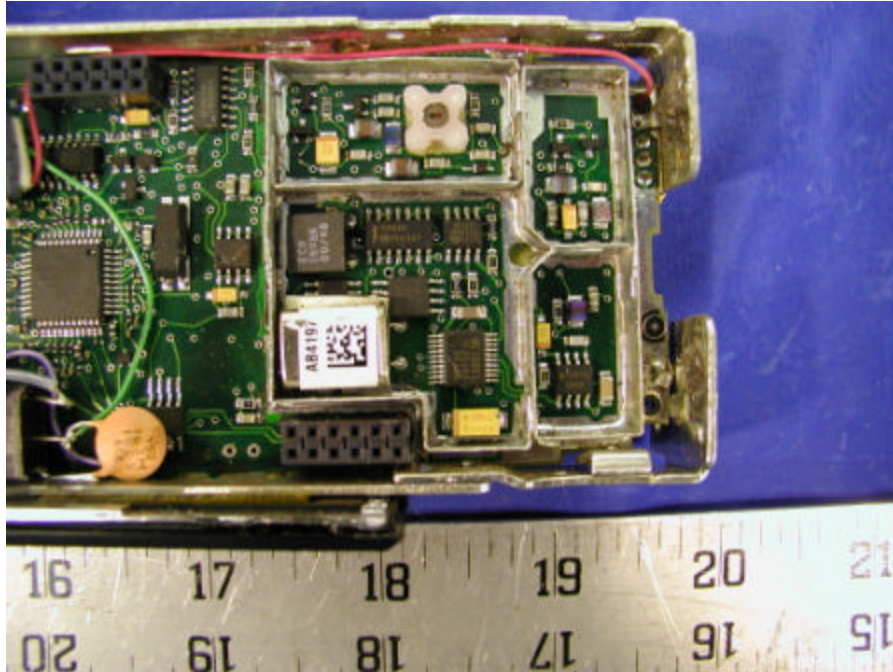
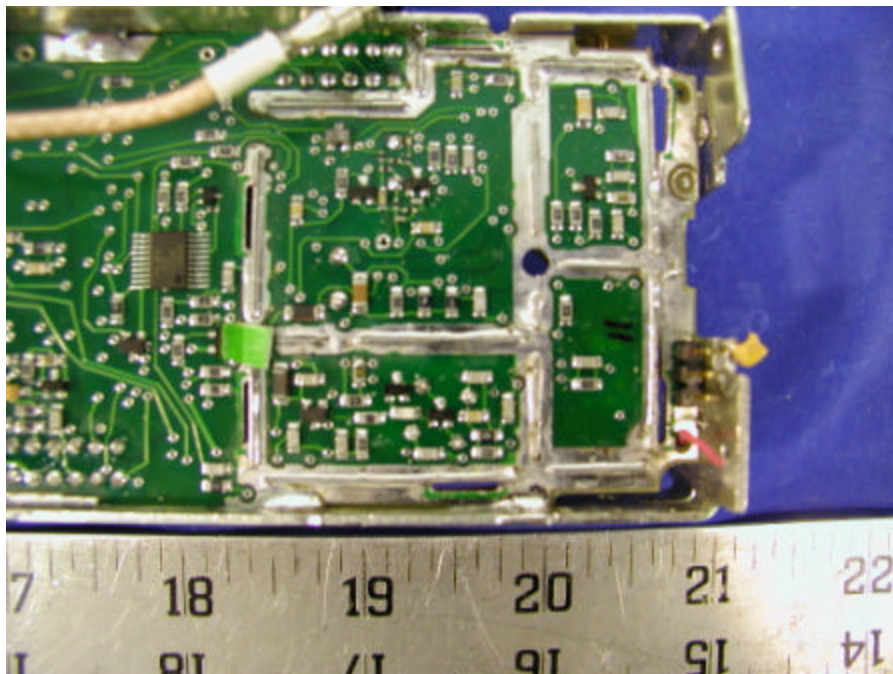
Antenna Connection



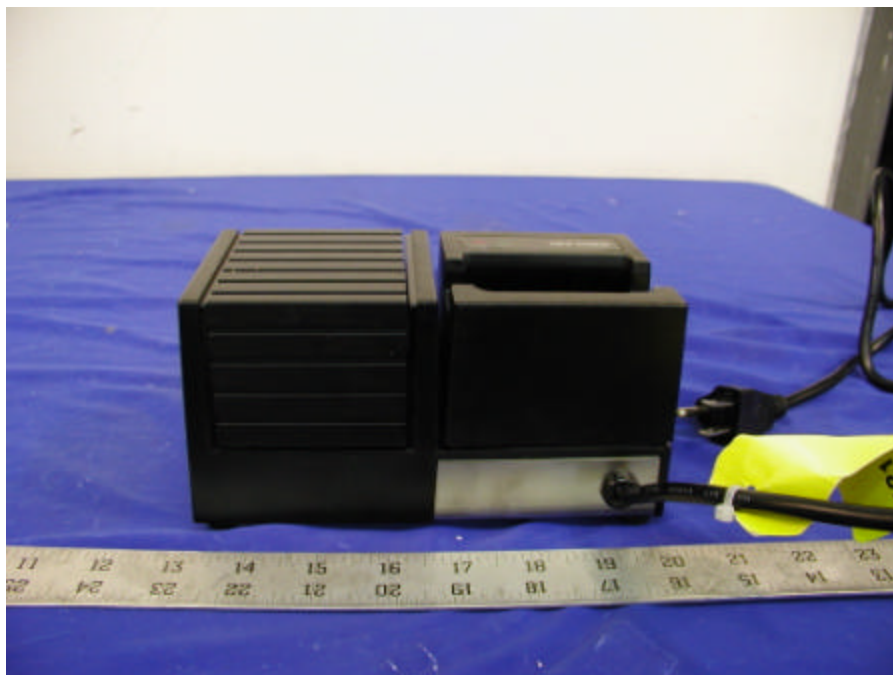
Antenna



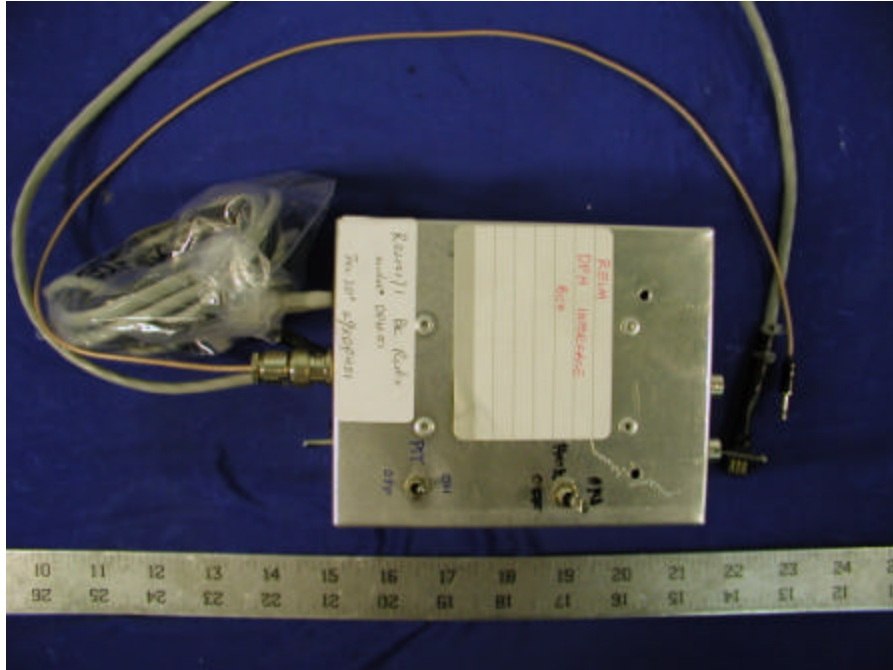
System Control Board Component View**System Control Board Solder View**

System Control Board Component View**System Control Board Solder View**

Battery Front**Battery Bottom**

Battery Top**Charger Front**

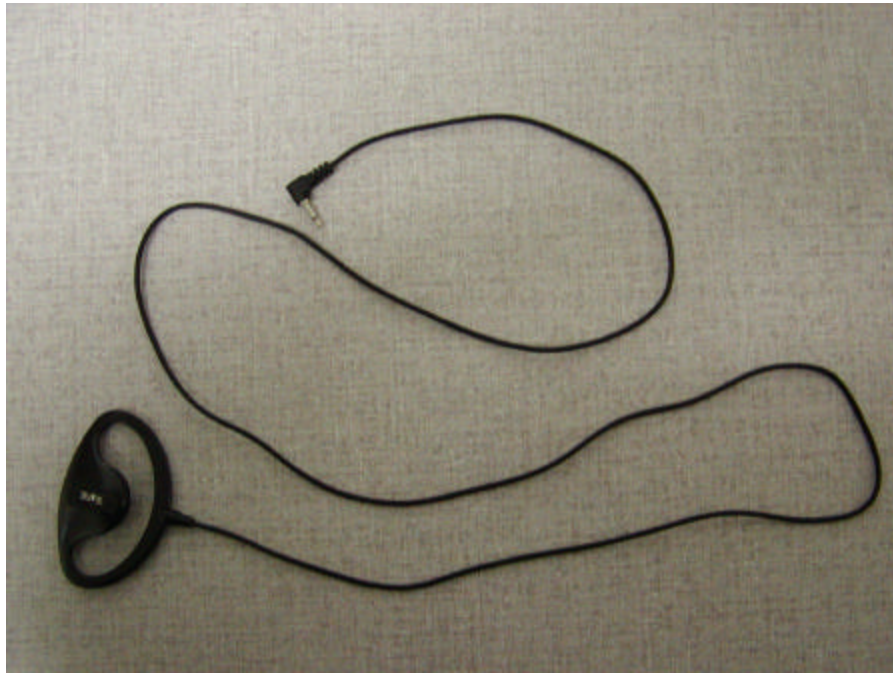
Radio Interface Box



Microphone



View of Earphone



Back View of Leather Case with Belt Clip



Front View of Leather Case with Belt Clip



Side View of Leather Case with Belt Clip



EUT – Front View / Antenna Hotspot Area

EXHIBIT C – Z-Axis

BK Radio Inc. DPH51(without belt clip 2.5cm separation, with ear phone, 23 Deg C, 11/8/02)

SAM Phantom; Section; Position: ; Frequency: 148 MHz

Probe: ET3DV6 - SN1604; ConvF(9.20,9.20,9.20); Crest factor: 1.0; Body 150 MHz: $\sigma = 0.84 \text{ mho/m}$, $\epsilon_r = 61.4$ $\rho = 1.00 \text{ g/cm}^3$

∴, 0

Z-Axis: Dx = 0.0, Dy = 0.0, Dz = 2.0

