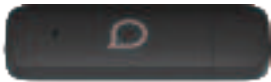


# IK42 4G USB Dongle

## Quick Start Guide



alcatel

### Safety and Use

We recommend that you read this chapter carefully before using this device. The manufacturer disclaims any liability for damage, which may result because of improper use of this device or from use contrary to the instructions contained herein.



Do not switch on your device when its use is prohibited or when using the device may cause interference or danger.



Do not place magnetic storage media near your device. Radiation from the device may erase the information stored on them.



Follow rules or regulations in hospitals and health care facilities. Switch off your device near medical apparatuses.



Do not subject your device to high temperatures or use it in a place with flammable gas such as a petrol station.



Switch off your device while on an aircraft. The device may cause interference to aircraft control signals.



Keep your device and its accessories away from children. Do not allow children to use your device without supervision.



Switch off your device near high-precision electronic devices. The device may affect the performance of these devices.



Do not place your device or its accessories in containers with a strong electromagnetic field.



Do not attempt to disassemble your device or its accessories. Only qualified personnel are allowed to service or repair the device.



Observe the laws or regulations on device use. Respect others' privacy and legal rights when using your device.

It is recommended that the equipment only be used in an environment where the temperature is between -10°C and 55°C and humidity is between 5% to 95%.

### Package Contents



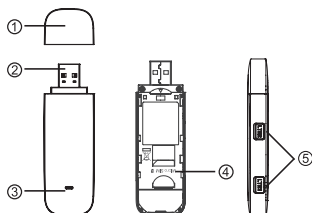
IK42 4G USB Dongle

Quick Start Guide

Safety and Warranty  
Information

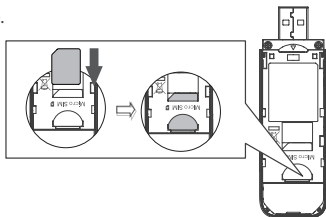
## Getting to Know Your Modem

- ① Cap
- ② USB interface
- ③ Indicator LED
- ④ SIM Card Slot
- ⑤ TS9 external antenna interface x 2



## How to start your modem

Step 1: Insert SIM card into the device.



Step 2: Plug into Computer.

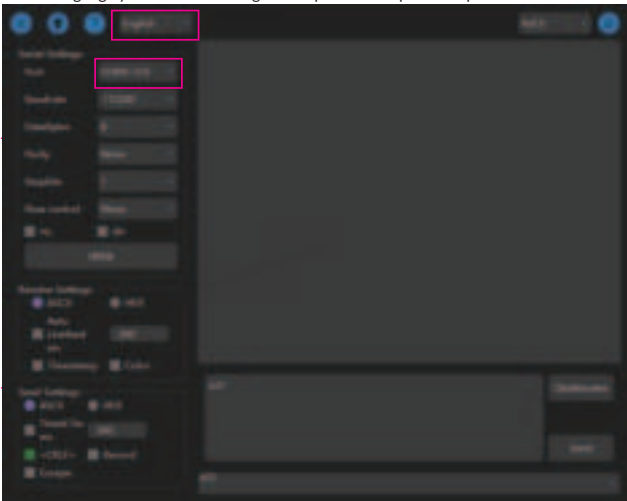
Step 3: Software will auto-install. Once installation is complete, your modem is ready for use.

## LED Indicator Description

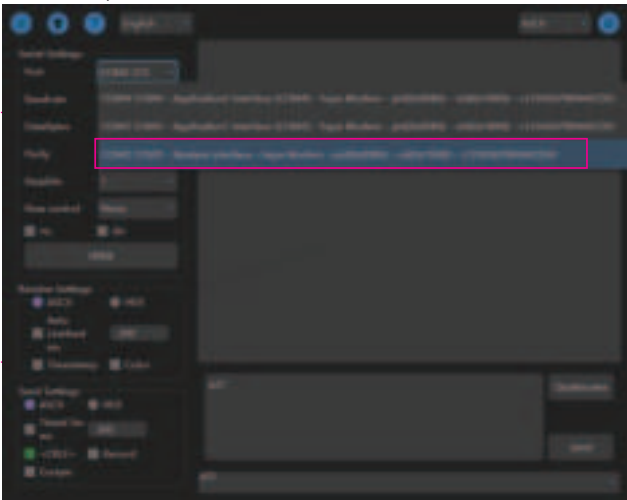
LED Indicator	Description (state)
Solid Purple	Power Up
1Hz Blinking Purple	Start to searching network (4G&3G&2G)
1Hz Blinking Blue	Registered on 4G network
1Hz Blinking Orange	Registered on 3G network
1Hz Blinking Green	Registered on 2G network
Solid Blue	Connected to 4G network and transferring the data
Solid Orange	Connected to 3G network and transferring the data
Solid Green	Connected to 2G network and transferring the data
LED not lit	Connected to network, but not in use
Constant Red light	Out of order Like out of service (not registered and not searching network), no SIM card

# How to send AT Command in Windows PC for IK42

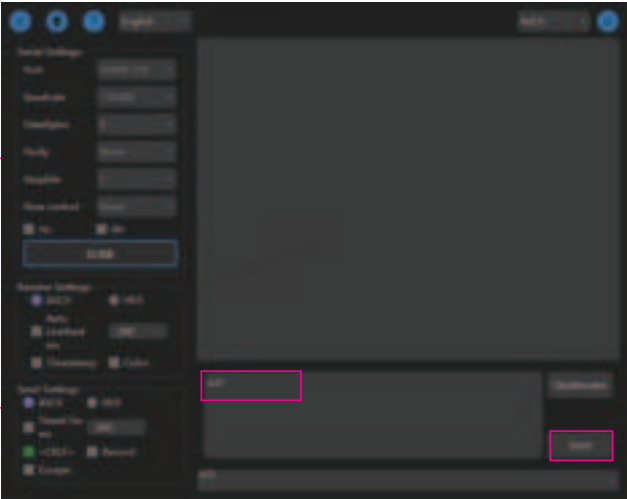
- 1. Open the AT Command tool.  
Select the language you want and configure the port via the port's drop down menu.



Select the correct port:



2. Send AT Command in the input window, and then tap “SEND”



The result is displayed in the following window:

