

1 Scope

This test report contains results measured on BreezeACCESS VL System with radio redesigned (permissible change) according to the relevant requirements of CFR 47 FCC Part 15 Subpart C.

2 General

2.1 *Permissible change description*

The BreezeAccess VL radio is based on the ATHEROS chip set that includes the MAC and the radio section. The permissive change is a modification of the front end transmit section to a low cost radio solution. The major change was in the power amplifier section where the transistor power amplifier lineup was replaced by a single MMIC giving the same operational output power and lower power consumption. There was no change in the ATHEROS chip set that contains all up and down converters and all frequency sources of the unit.

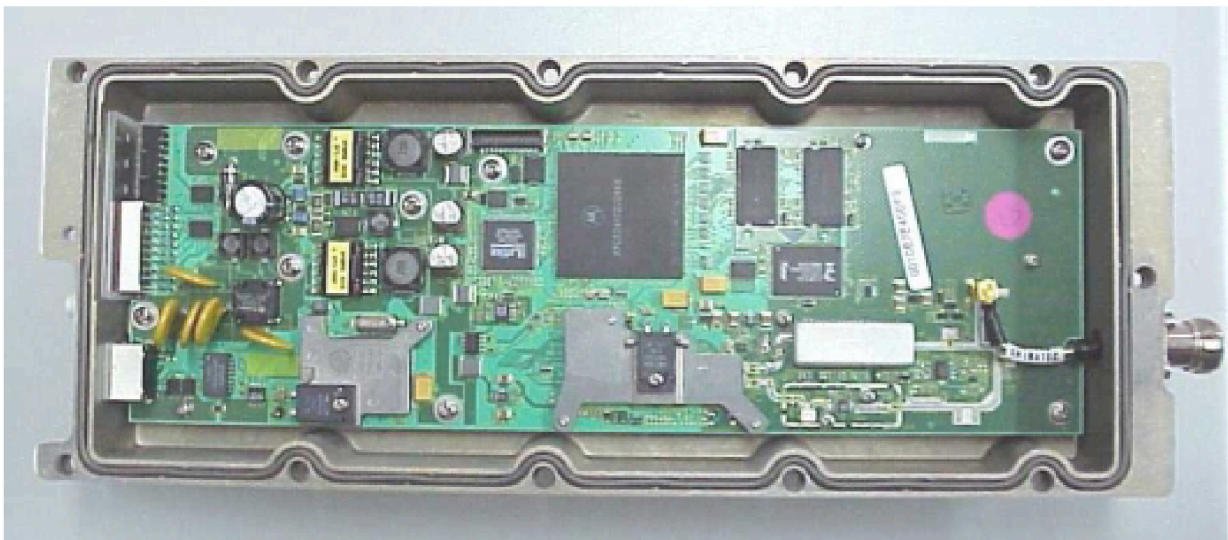


Photo 1
Radio Unit. PWB component side

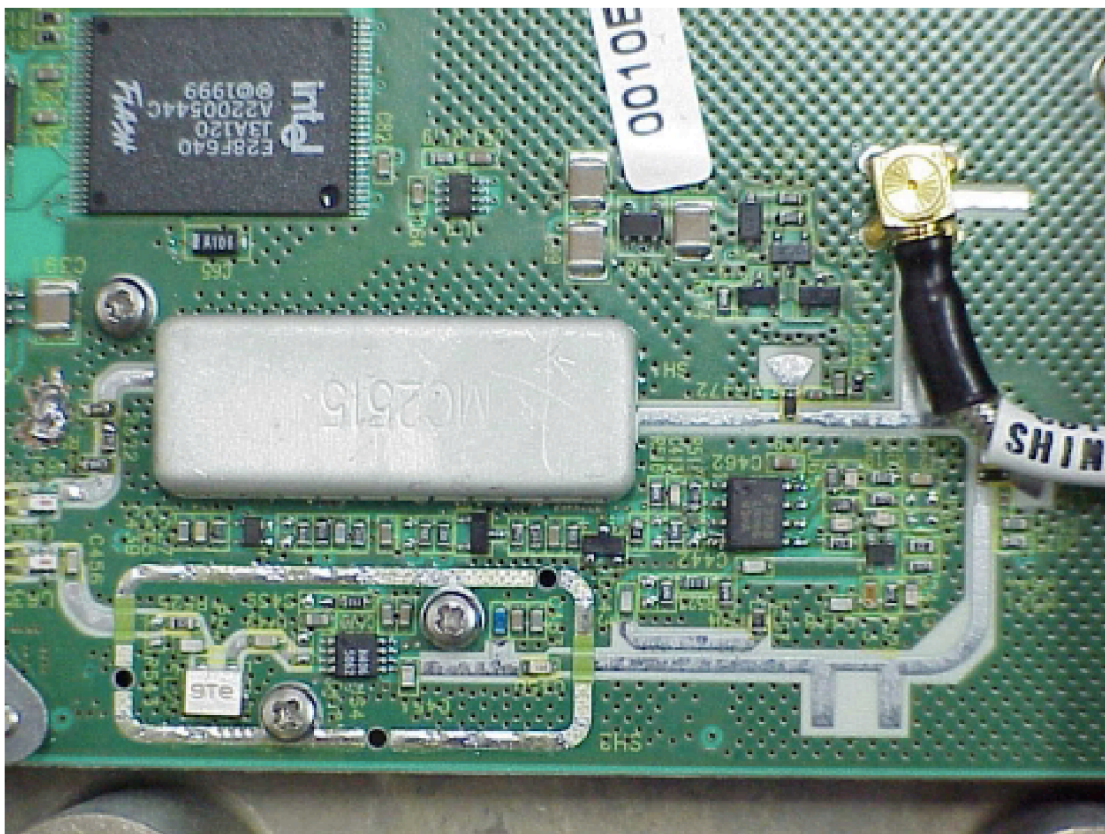


Photo 2
Radio Unit. Redesigned area (PWB component side)

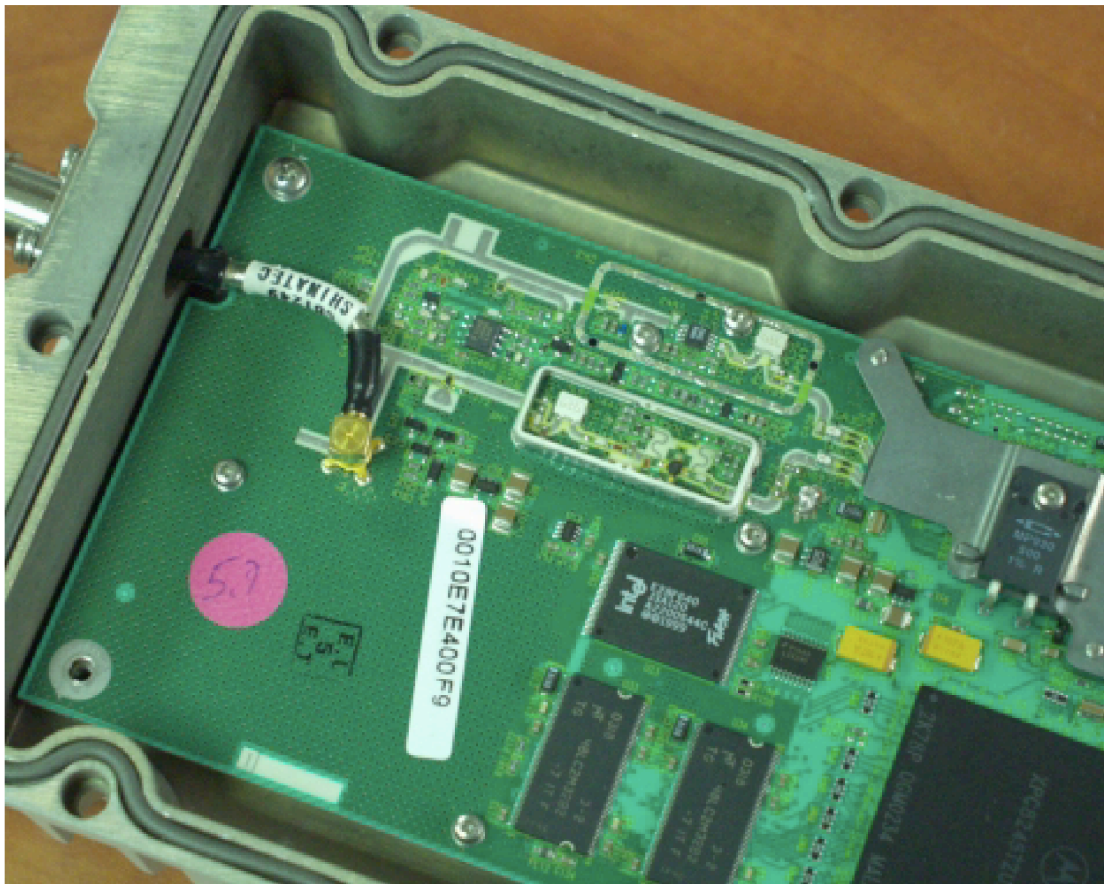


Photo 3
Radio Unit. Redesigned area (PWB printed side)