

FCC SAR Test Report

Product : Smart Watch
Trade mark : IDO
Model/Type reference : GTR1
Serial Number : IDO102025010001
Report Number : EED32Q819018
FCC ID : 2AHFT872
Date of Issue: : Jan. 15, 2025
Test Standards : Refer to Section 1.5
Test result : PASS

Prepared for:

Shenzhen DO Intelligent Technology Co., Ltd

**11th Floor, 3# Building, Guole Tech Park, Lirong Road, Dalang, Longhua
District, Shenzhen, China**

Prepared by:

Centre Testing International Group Co., Ltd.

Hongwei Industrial Zone, Bao'an 70 District,

Shenzhen, Guangdong, China

TEL: +86-755-3368 3668

FAX: +86-755-3368 3385

Compiled by:

Weishifeng

Reviewed by:

Frazer. Li

Weishifeng

Frazer Li

Approved by:

Aaron Ma

Date:

Jan. 15, 2025

Aaron Ma



Check No.: 1610201124

Table of contents

1 General information	5
1.1 Notes	5
1.2 Application details	5
1.3 EUT Information	6
1.4 Statement of Compliance	7
1.5 Test standard/s	8
1.6 RF exposure limits	9
1.7 SAR Definition	9
1.8 Testing laboratory	10
1.9 Test Environment	10
1.10 Applicant and Manufacturer	10
2 SAR Measurement System Description and Setup	11
2.1 The Measurement System Description	11
2.2 Probe description	12
2.3 Data Acquisition Electronics description	13
2.4 SAM Twin Phantom description	14
2.5 ELI4 Phantom description	15
2.6 Device Holder description	16
3 SAR Test Equipment List	17
4 SAR Measurement Procedures	18
4.1 Spatial Peak SAR Evaluation	18
4.2 Data Storage and Evaluation	19
4.3 Data Storage and Evaluation	23
5 SAR Verification Procedure	25
5.1 Tissue Simulating Liquids	25
5.2 Tissue Verification	26
5.3 System check procedure	28
5.4 System check results	29
6 SAR Measurement variability and uncertainty	30
6.1 SAR measurement variability	30
6.2 SAR measurement uncertainty	30
7 SAR Test Configuration	31
7.1 Bluetooth Test Configurations	31
8 SAR Test Results	32
8.1 Conducted Power Measurements	32

8.1.1 Conducted Power of Bluetooth	32
8.2 SAR test results	33
8.2.1 Results overview of Bluetooth	34
8.3 Multiple Transmitter Information	36
8.4 Stand-alone SAR	37
8.5 Simultaneous Transmission Possibilitiesand Conclusion	38
Annex A: Appendix A: SAR System performance Check Plots	39
Annex B: Appendix B: SAR Measurement results Plots	39
Annex C: Appendix C: Calibration reports	39
Annex D: Appendix D: Photo documentation	39

Modified History

REV.	Modification Description	Issued Date	Remark
REV.1.0	Initial Test Report Release	Jan. 15, 2025	

1 General information

1.1 Notes

The test results of this test report relate exclusively to the test item specified in this test report.

Centre Testing International Group Co., Ltd. does not assume responsibility for any conclusions and generalisations drawn from the test results with regard to other specimens or samples of the type of the equipment represented by the test item. The test report is not to be reproduced or published in full without the prior written permission.

1.2 Application details

Date of receipt of test item: 2025-01-08

Start of test: 2025-01-08

End of test: 2025-01-10

1.3 EUT Information

Device Information:			
Product:	Smart Watch		
Model:	GTR1		
SN:	IDO102025010001		
Device Type:	Portable production		
Exposure Category:	uncontrolled environment / general population		
Antenna Type :	Built-in lds antenna stand		
Antenna gain:	-0.43dBi		
Others Accessories:	N/A		
Device Operating Configurations:			
Supporting Mode(s) :	BT Dual mode: 2402MHz to 2480MHz		
Modulation:	GFSK, π/4DQPSK, 8DPSK BLE: GFSK		
Operating Frequency Range(s):	Band	TX(MHz)	RX(MHz)
	BT	2402~2480	
	BLE	2402~2480	
Test Channels (low-mid-high):	0-39-78 (BT 2450)		
	0-20-39 (BLE 2450)		
Power Supply:	Li-ion battery	DC 3.87V 450mAh, Charge by DC 5V for adapter	

1.4 Statement of Compliance

The maximum results of Specific Absorption Rate (SAR) found during testing are as below:

Band	MAX Reported SAR (W/kg)		Test Result
	1-g front of face (with 10mm separation)	10-g Limb (with 0mm separation)	
BT	0.159	0.129	PASS
BLE	0.316	0.102	
Limit (W/kg)	1.60	4.00	

Note:

The device is in compliance with Specific Absorption Rate (SAR) for general population/uncontrolled exposure limits(1.6W/kg for localized Head, Neck and Trunk 1g SAR, 4.0W/kg for localized Limbs 10g SAR) according to the FCC rule §2.1093, the ANSI/IEEE C95.1:1992, the NCRP Report Number 86 for uncontrolled environment, according to the Industry Canada Radio Standards Specification RSS-102 for General Population/Uncontrolled exposure, and had been tested in accordance with the measurement methods and procedures specified in IEEE Std 1528-2013.

1.5 Test standard/s

ANSI Std C95.1-1992	Safety Levels with Respect to Human Exposure to Radio Frequency Electromagnetic Fields, 3 kHz to 300 GHz.
IEEE Std 1528-2013	Recommended Practice for Determining the Peak Spatial-Average Specific Absorption Rate (SAR) in the Human Head from Wireless Communications Devices: Measurement Techniques
RSS-102	Radio Frequency Exposure Compliance of Radiocommunication Apparatus (All Frequency Bands (Issue 6)
KDB 248227 D01	SAR guidance for IEEE 802.11(Wi-Fi) transmitters v02r02
KDB 447498 D04	Interim General RF Exposure Guidance v01
KDB 690783 D01	SAR Listings on Grants v01r03
KDB 865664 D01	SAR Measurement 100 MHz to 6 GHz v01r04
KDB 865664 D02	RF Exposure Reporting v01r02

1.6 RF exposure limits

Human Exposure	Uncontrolled Environment General Population	Controlled Environment Occupational
Spatial Peak SAR* (Brain/Body/Arms/Legs)	1.60 mW/g	8.00 mW/g
Spatial Average SAR** (Whole Body)	0.08 mW/g	0.40 mW/g
Spatial Peak SAR*** (Hands/Feet/Ankle/Wrist)	4.00 mW/g	20.00 mW/g

The limit applied in this test report is shown in bold letters

Notes:

* The Spatial Peak value of the SAR averaged over any 1 gram of tissue (defined as a tissue volume in the shape of a cube) and over the appropriate averaging time.

** The Spatial Average value of the SAR averaged over the whole body.

*** The Spatial Peak value of the SAR averaged over any 10 grams of tissue (defined as a tissue volume in the shape of a cube) and over the appropriate averaging time.

Uncontrolled Environments are defined as locations where there is the exposure of individuals who have no knowledge or control of their exposure.

Controlled Environments are defined as locations where there is exposure that may be incurred by persons who are aware of the potential for exposure, (i.e. as a result of employment or occupation).

1.7 SAR Definition

Specific Absorption Rate is defined as the time derivative (rate) of the incremental energy (dW) absorbed by(dissipated in) an incremental mass (dm) contained in a volume element (dV) of a given density (ρ).

$$SAR = \frac{d}{dt} \left(\frac{dW}{dm} \right) = \frac{d}{dt} \left(\frac{dW}{\rho dV} \right)$$

SAR is expressed in units of watts per kilogram (W/kg). SAR can be related to the electric field at a point by

$$SAR = \frac{\sigma |E|^2}{\rho}$$

where:

σ = conductivity of the tissue (S/m)
ρ = mass density of the tissue (kg/m³)
E = rms electric field strength (V/m)

1.8 Testing laboratory

Test Site	Centre Testing International Group Co., Ltd.
Test Location	Hongwei Industrial Zone, Bao'an 70 District, Shenzhen, Guangdong, China
Telephone	+86 (0) 755 3368 3668
Fax	+86 (0) 755 3368 3385

1.9 Test Environment

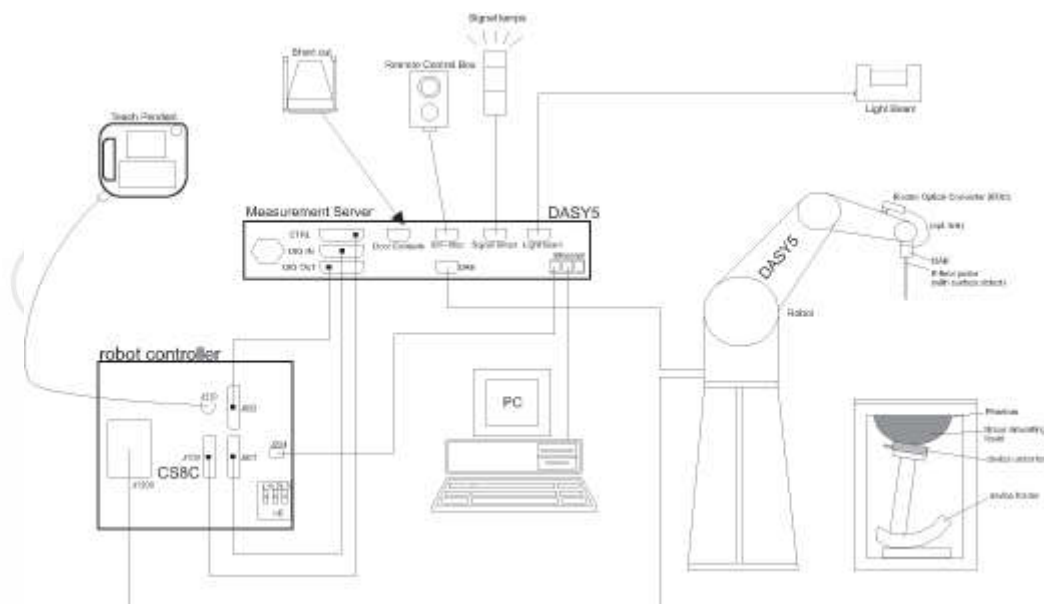
	Required	Actual
Ambient temperature:	18 – 25 °C	21.5 ± 2.0 °C
Tissue Simulating liquid:	18 – 25 °C	21.5 ± 2.0 °C
Relative humidity content:	30 – 70 %	30 – 70 %

1.10 Applicant and Manufacturer

Applicant/Client Name:	Shenzhen DO Intelligent Technology Co., Ltd
Applicant Address:	11th Floor, 3# Building, Guole Tech Park, Lirong Road, Dalang, Longhua District, Shenzhen, China
Manufacturer Name:	Shenzhen DO Intelligent Technology Co., Ltd
Manufacturer Address:	11th Floor, 3# Building, Guole Tech Park, Lirong Road, Dalang, Longhua District, Shenzhen, China
Factory Name:	Shenzhen DO Intelligent Technology Co., Ltd
Factory Address:	11th Floor, 3# Building, Guole Tech Park, Lirong Road, Dalang, Longhua District, Shenzhen, China

2 SAR Measurement System Description and Setup

2.1 The Measurement System Description



The DASYS system for performing compliance tests consists of the following items:

- A standard high precision 6-axis robot (Stäubli TX/RX family) with controller, teach pendant and software. An arm extension for accommodating the data acquisition electronics (DAE).
- An isotropic field probe optimized and calibrated for the targeted measurement.
- A data acquisition electronics (DAE) which performs the signal amplification, signal multiplexing, AD-conversion, offset measurements, mechanical surface detection, collision detection, etc. The unit is battery powered with standard or rechargeable batteries. The signal is optically transmitted to the EOC.
- The Electro-optical converter (EOC) performs the conversion from optical to electrical signals for the digital communication to the DAE. To use optical surface detection, a special version of the EOC is required. The EOC signal is transmitted to the measurement server.
- The function of the measurement server is to perform the time critical tasks such as signal filtering, control of the robot operation and fast movement interrupts.
- The Light Beam used is for probe alignment. This improves the (absolute) accuracy of the probe positioning.
- A computer running Win7 profesional operating system and the DASYS5 software.
- Remote control and teach pendant as well as additional circuitry for robot safety such as warning lamps, etc.
- The phantom, the device holder and other accessories according to the targeted measurement.

2.2 Probe description

Dosimetric Probes: These probes are specially designed and calibrated for use in liquids with high permittivities. They should not be used in air, since the spherical isotropy in air is poor(± 2 dB). The dosimetric probes have special calibrations in various liquids at different frequencies.

Construction	Symmetrical design with triangular core Interleaved sensors Built-in shielding against static charges PEEK enclosure material (resistant to organic solvents, e.g., DGBE)
Calibration	ISO/IEC 17025 calibration service available.
Frequency	10 MHz to 6 GHz; Linearity: ± 0.2 dB
Probe Overall Length	337mm
Probe Body Diameter	10mm
Tip Length	9mm
Tip Diameter	2.5mm
Dynamic range	5 μ W/g to 100 mW/g; Linearity: ± 0.2 dB

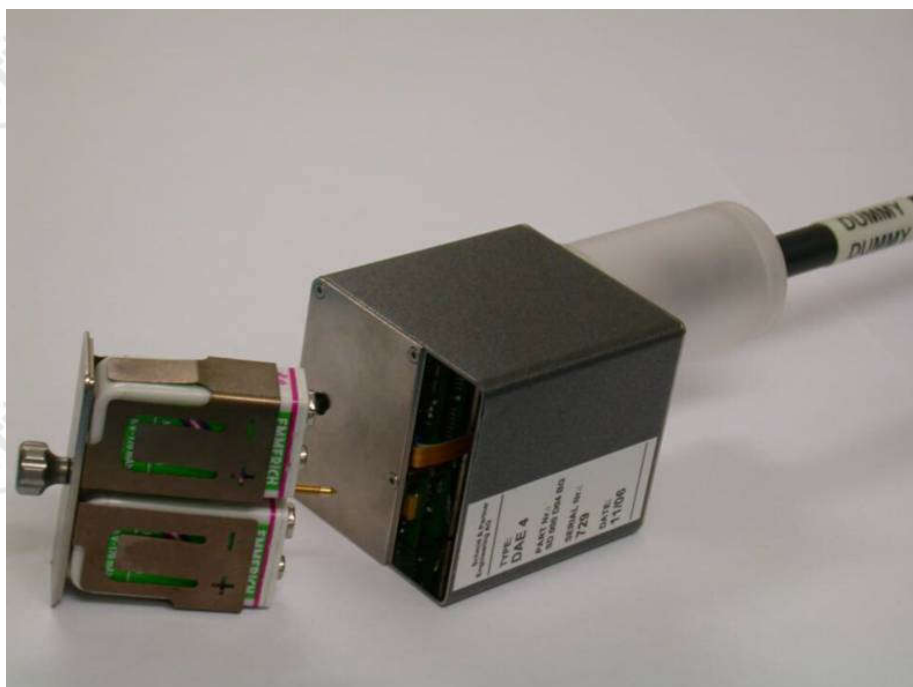


2.3 Data Acquisition Electronics description

The data acquisition electronics (DAE4) consist of a highly sensitive electrometer-grade preamplifier with auto-zeroing, a channel and gain-switching multiplexer, a fast 16 bit AD-converter and a command decoder with a control logic unit. Transmission to the measurement server is accomplished through an optical downlink for data and status information, as well as an optical uplink for commands and the clock.

The mechanical probe mounting device includes two different sensor systems for frontal and sideways probe contacts. They are used for mechanical surface detection and probe collision detection. The input impedance of the DAE4 box is 200M Ω ; the inputs are symmetrical and floating. Common mode rejection is above 80 dB.

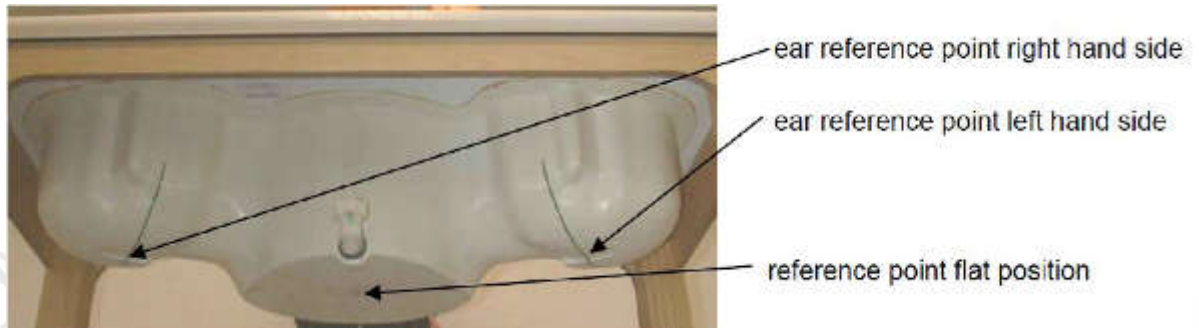
Batteries: The DAE works with either two standard 9V batteries or two 9V (actually 8.4V or 9.6 V) rechargeable batteries. Because the electronics automatically power-down unused components during braking or between measurements, the battery lifetime depends on system usage. Typical lifetimes are >20 hours for batteries and >10 hours for accus. Remove the batteries if you do not plan to use the DAE for a long period of time.



2.4 SAM Twin Phantom description

The SAM twin phantom is a fiberglass shell phantom with 2mm shell thickness (except the ear region, where shell thickness increases to 6 mm). The phantom has three measurement areas:

- ◆ Left hand
- ◆ Right hand
- ◆ Flat phantom



The phantom table for the DASY systems have the size of 100 x 50 x 85 cm (L x W x H). These tables are reinforced for mounting of the robot onto the table. For easy dislocation these tables have fork lift cut outs at the bottom.

The bottom plate contains three pairs of bolts for locking the device holder. The device holder positions are adjusted to the standard measurement positions in the three sections.

A white cover is provided to cover the phantom during off-periods to prevent water evaporation and changes in the liquid parameters.

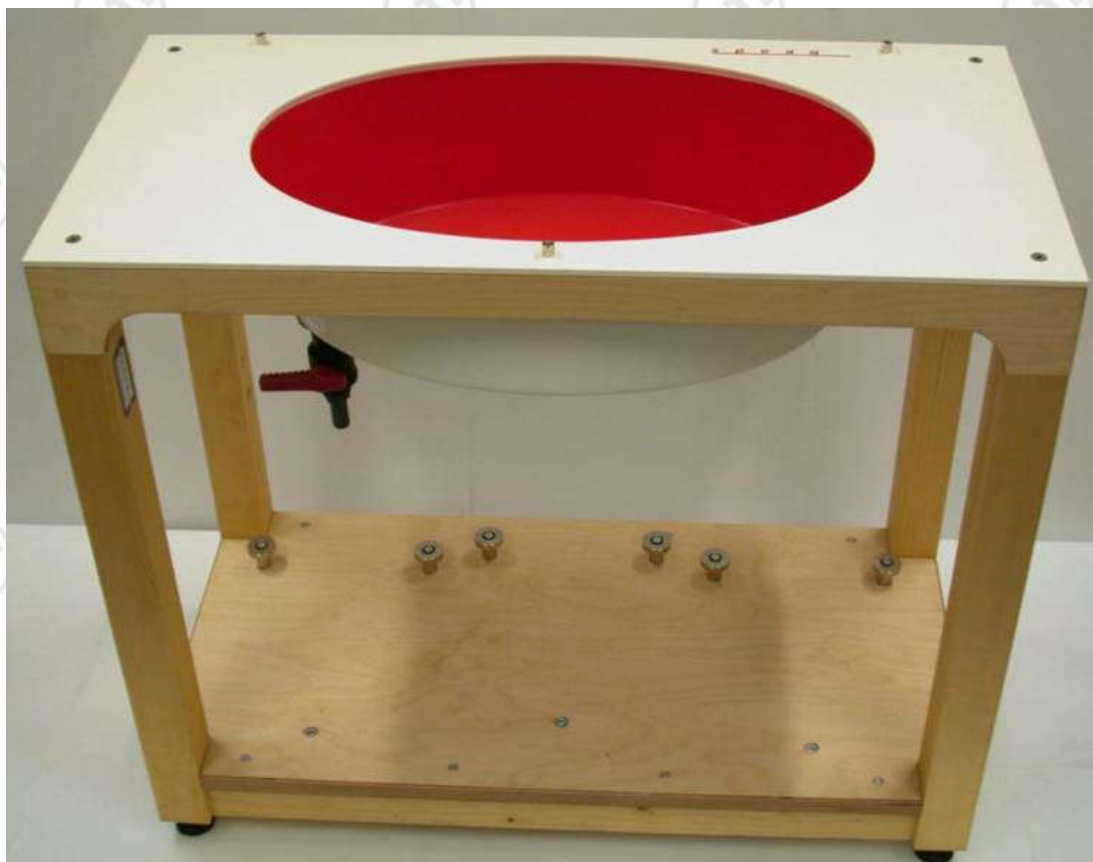
Three reference marks are provided on the phantom counter. These reference marks are used to teach the absolute phantom position relative to the robot.



2.5 ELI4 Phantom description

The ELI4 phantom is intended for compliance testing of handheld and body mounted wireless devices in the frequency range of 30MHz to 6 GHz. ELI4 is fully compatible with the latest draft of the standard IEC 62209-2 and all known tissue simulating liquids.

ELI4 has been optimized regarding its performance and can be integrated into a SPEAG standard phantom table. A cover prevents evaporation of the liquid. Reference markings on the phantom allow installation of the complete setup, including all predefined phantom positions and measurement grids, by teaching three points



2.6 Device Holder description

The SAR in the phantom is approximately inversely proportional to the square of the distance between the source and the liquid surface. For a source at 5mm distance, a positioning uncertainty of $\pm 0.5\text{mm}$ would produce a SAR uncertainty of $\pm 20\%$. Accurate device positioning is therefore crucial for accurate and repeatable measurements. The positions in which the devices must be measured are defined by the standards.

The DASY device holder is designed to cope with the different positions given in the standard. It has two scales for device rotation (with respect to the body axis) and device inclination (with respect to the line between the ear reference points). The rotation centers for both scales is the ear reference point (ERP). Thus the device needs no repositioning when changing the angles.

The DASY device holder is constructed of low-loss POM material having the following dielectric parameters: relative permittivity $\epsilon = 3$ and loss tangent $\delta = 0.02$. The amount of dielectric material has been reduced in the closest vicinity of the device, since measurements have suggested that the influence of the clamp on the test results could thus be lowered.



3 SAR Test Equipment List

To simplify the identification of the test equipment and/or ancillaries which were used, the reporting of the relevant test cases only refer to the test item number as specified in the table below.

	Manufacturer	Device Type	Type(Model)	Serial number	Date of last calibration	Valid period
<input checked="" type="checkbox"/>	SPEAG	E-Field Probe	EX3DV4	7328	2024-04-18	One year
<input type="checkbox"/>	SPEAG	835 MHz Dipole	D835V2	4d193	2024-01-17	Three years
<input type="checkbox"/>	SPEAG	1750 MHz Dipole	D1750V2	1134	2024-01-17	Three years
<input type="checkbox"/>	SPEAG	1900 MHz Dipole	D1900V2	5d198	2024-01-18	Three years
<input type="checkbox"/>	SPEAG	2000 MHz Dipole	D2000V2	1078	2024-01-22	Three years
<input type="checkbox"/>	SPEAG	2300 MHz Dipole	D2300V2	1082	2023-01-11	Three years
<input checked="" type="checkbox"/>	SPEAG	2450 MHz Dipole	D2450V2	959	2024-01-17	Three years
<input type="checkbox"/>	SPEAG	2600 MHz Dipole	D2600V2	1101	2024-01-22	Three years
<input type="checkbox"/>	SPEAG	5 GHz Dipole	D5GHzV2	1208	2024-01-16	Three years
<input checked="" type="checkbox"/>	SPEAG	DAKS probe	DAKS-3.5	1052	2024-04-22	Three years
<input checked="" type="checkbox"/>	SPEAG	Planar R140 Vector Reflectometer	DAKS-VNA R140	0200514	2024-04-22	Three years
<input checked="" type="checkbox"/>	SPEAG	Data acquisition electronics	DAE4	1458	2024-01-23	One year
<input checked="" type="checkbox"/>	SPEAG	Software	DASY 5	NA	NCR	NCR
<input checked="" type="checkbox"/>	SPEAG	Twin Phantom	SAM V5.0	1875	NCR	NCR
<input type="checkbox"/>	SPEAG	Flat Phantom	ELI V6.0	2024	NCR	NCR
<input checked="" type="checkbox"/>	Liquid	Head Liquid	2450 Head	2450	/	/
<input type="checkbox"/>	R & S	Universal Radio Communication Tester	CMU200	101553	2024-12-05	One year
<input checked="" type="checkbox"/>	R & S	Universal Radio Communication Tester	CMW500	102898	2024-12-05	One year
<input checked="" type="checkbox"/>	Agilent	Signal Generator	N5181A	MY50142334	2024-12-05	One year
<input checked="" type="checkbox"/>	BONN	Power Amplifier and directional coupler	SU319W	BL-SZ1550140	2024-12-05	One year
<input checked="" type="checkbox"/>	KEITHLEY	RF Power Meter	3500	1128079	2024-06-12	One year
<input checked="" type="checkbox"/>	KEITHLEY	RF Power Meter	3500	1128081	2024-06-12	One year
<input checked="" type="checkbox"/>	JINGCHUAN G	Temperature/ Humidity Indicator	GSP-8	EMK197F0009 5	2024-06-05	One year

Note:

- 1) Per KDB865664D01 requirements for dipole calibration, the test laboratory has adopted three-year extended calibration interval. Each measured dipole is expected to evaluate with the following criteria at least on annual interval in Appendix C.
 - a) There is no physical damage on the dipole;
 - b) System check with specific dipole is within 10% of calibrated value;
 - c) The most recent return-loss result, measured at least annually, deviates by no more than 20% from the previous measurement.
 - d) The most recent measurement of the real or imaginary parts of the impedance, measured at least annually is within 5Ω from the previous measurement.

4 SAR Measurement Procedures

4.1 Spatial Peak SAR Evaluation

The DASY5 software includes all numerical procedures necessary to evaluate the spatial peak SAR values. The base for the evaluation is a "cube" measurement in a volume of 30mm³ (7x7x7 points). The measured volume must include the 1 g and 10 g cubes with the highest averaged SAR values. For that purpose, the center of the measured volume is aligned to the interpolated peak SAR value of a previously performed area scan. If the 10g cube or both cubes are not entirely inside the measured volumes, the system issues a warning regarding the evaluated spatial peak values within the Postprocessing engine (SEMCAD X). This means that if the measured volume is shifted, higher values might be possible. To get the correct values you can use a finer measurement grid for the area scan. In complicated field distributions, a large grid spacing for the area scan might miss some details and give an incorrectly interpolated peak location. The entire evaluation of the spatial peak values is performed within the Postprocessing engine (SEMCAD X). The system always gives the maximum values for the 1 g and 10 g cubes.

The algorithm to find the cube with highest averaged SAR is divided into the following stages:

1. extraction of the measured data (grid and values) from the Zoom Scan
2. calculation of the SAR value at every measurement point based on all stored data (A/D values and measurement parameters)
3. generation of a high-resolution mesh within the measured volume
4. interpolation of all measured values from the measurement grid to the high-resolution grid
5. extrapolation of the entire 3-D field distribution to the phantom surface over the distance from sensor to surface
6. calculation of the averaged SAR within masses of 1 g and 10 g

4.2 Data Storage and Evaluation

Data Storage

The DASY5 software stores the measured voltage acquired by the Data Acquisition Electronics (DAE) as raw data together with all the necessary software parameters for the data evaluation (probe calibration data, liquid parameters and communication system parameters) in measurement files with the extension .da5x. The postprocessing software evaluates the data every time the data is visualized or exported. This allows the verification and modification of the setup after completion of the measurement. For example, if a measurement has been performed with an incorrect crest factor, the parameter can be corrected afterwards and the data can be reevaluated.

To avoid unintentional parameter changes or data manipulations, the parameters in measured files are locked. In the administrator access mode of the software, the parameters can be unlocked. After changing the parameters, the measured scans can be reevaluated in the postprocessing engine.

The measured data can be visualized or exported in different units or formats, depending on the selected probe type (e.g., E-field, H-field, SAR). Some of these units are not available in certain situations or give meaningless results, e.g., a SAR-output in a lossless media will always be zero. Raw data can also be exported to perform the evaluation with other software packages.

Data Evaluation

The fields and SAR are calculated from the measured voltage (probe voltage acquired by the DAE) and the following parameters:

Probe parameters:	- Sensitivity	$\text{norm}_i, a_{i0}, a_{i1}, a_{i2}$
	- Conversion Factor	convF_i
	- Diode Compression Point	dcp_i
	- Probe Modulation Response Factors	a_i, b_i, c_i, d
Device parameters:	- Frequency	f
	- Crest factor	cf
Media parameters:	- Conductivity	σ
	- Relative Permittivity	ρ

This parameters are stored in the DASY5 V52 measurement file.

These parameters must be correctly set in the DASY5 V52 software setup. They are available as configuration file and can be imported into the measurement file. The values displayed in the multimeter window are assessed using the parameters of the actual system setup. In the scan visualization and export modes, the parameters stored in the measurement file are used.

The measured voltage is not proportional to the exciting. It must be first linearized.

Approximated Probe Response Linearization using Crest Factor.

This linearization method is enabled when a custom defined communication system is measured. The compensation applied is a function of the measured voltage, the detector diode compression point and the crest factor of the measured signal.

$$V_i = U_i + U_i^2 \cdot \frac{cf}{dcp_i}$$

with	V_i	=	linearized voltage of channel i (uV)	(i = x,y,z)
	U_i	=	measured voltage of channel i (uV)	(i = x,y,z)
	cf	=	crest factor of exciting field	(DASY parameter)
	dcp _i	=	diode compression point of channel i (uV)	(Probe parameter, i = x,y,z)

Field and SAR Calculation

The primary field data for each channel are calculated using the linearized voltage:

$$E - \text{fieldprobes : } E_i = \sqrt{\frac{V_i}{\text{Norm}_i \cdot \text{ConvF}}}$$

$$H - \text{fieldprobes : } H_i = \sqrt{V_i} \cdot \frac{a_{i0} + a_{i1}f + a_{i2}f^2}{f}$$

with	V_i	=	linearized voltage of channel i	(i = x,y,z)
	Norm_i	=	sensor sensitivity of channel i	(i = x,y,z)
			uV/(V/m) ² for E-field Probes	
	ConvF	=	sensitivity enhancement in solution	
	a_{ij}	=	sensor sensitivity factors for H-field probes	
	f	=	carrier frequency [GHz]	
	E_i	=	electric field strength of channel i in V/m	
	H_i	=	magnetic field strength of channel i in A/m	

The RMS value of the field components gives the total field strength (Hermitian magnitude):

$$E_{tot} = \sqrt{E_x^2 + E_y^2 + E_z^2}$$

The primary field data are used to calculate the derived field units.

$$SAR = E_{tot}^2 \cdot \frac{\sigma}{\rho \cdot 1'000}$$

with	SAR	=	local specific absorption rate in mW/g
	E_{tot}	=	total field strength in V/m
	σ	=	conductivity in [mho/m] or [Siemens/m]
	ρ	=	equivalent tissue density in g/cm ³

Note that the density is set to 1, to account for actual head tissue density rather than the density of the tissue simulating liquid.

Spatial Peak SAR for 1 g and 10 g

The DASY5 software includes all numerical procedures necessary to evaluate the spatial peak SAR values. The base for the evaluation is a "cube" measurement at the points of the fine cube grid consisting of 5 x 5 x 7 points (with 8mm horizontal resolution) or 7 x 7 x 7 points (with 5mm horizontal resolution) or 8 x 8 x 7 points (with 4mm horizontal resolution). The entire evaluation of the spatial peak values is performed within the Postprocessing engine (SEMCAD X). The system always gives the maximum values for the 1 g and 10 g cubes.

The algorithm to find the cube with highest averaged SAR is divided into the following stages:

1. extraction of the measured data (grid and values) from the Zoom Scan.
2. calculation of the SAR value at every measurement point based on all stored data (A/D values and measurement parameters).
3. generation of a high-resolution mesh within the measured volume.
4. interpolation of all measured values from the measurement grid to the high-resolution grid
5. extrapolation of the entire 3-D field distribution to the phantom surface over the distance from sensor to surface.
6. calculation of the averaged SAR within masses of 1 g and 10 g.

4.3 Data Storage and Evaluation

The DASY5 installation includes predefined files with recommended procedures for measurements and validation. All test positions (head or body-worn) are tested with the same configuration of test steps differing only in the grid definition for the different test positions.

Step 1: Power reference measurement

The Power Reference Measurement and Power Drift Measurement are for monitoring the power drift of the device under test in the batch process. The Minimum distance of probe sensors to surface determines the closest measurement point to phantom surface. By default, the Minimum distance of probe sensors to surface is 4 mm. This distance can be modified by the user, but cannot be smaller than the Distance of sensor calibration points to probe tip as defined in the probe properties. The SAR measurement was taken at a selected spatial reference point to monitor power variations during testing. This fixed location point was measured and used as a reference value.

Step 2: Area Scan

The Area Scan is used as a fast scan in two dimensions to find the area of high field values, before doing a finer measurement around the hotspot. The sophisticated interpolation routines implemented in DASY5 software can find the maximum locations even in relatively coarse grids. When an Area Scan has measured all reachable points, it computes the field maxima found in the scanned area, within a range of the global maximum. The range (in dB) is specified in the standards for compliance testing. For example, a 2 dB range is required in IEEE 1528-2003 and IEC 62209 standards, whereby 3 dB is a requirement when compliance is assessed in accordance with the ARIB standard (Japan). If only one Zoom Scan follows the Area Scan, then only the absolute maximum will be taken as reference. For cases where multiple maximums are detected, the number of Zoom Scans has to be increased accordingly.

Step 3: Zoom Scan

The Zoom Scans are used to assess the peak spatial SAR values within a cubic averaging volume containing 1 gram and 10 gram of simulated tissue. The default Zoom Scan is defined in the following table. DASY5 is also able to perform repeated zoom scans if more than 1 peak is found during area scan. When the measurement is done, the Zoom Scan evaluates the averaged SAR for 1 gram and 10 gram and displays these values next to the job's label.

Area scan and Zoom scan resolutions per FCC KDB Publication 865664 D01:

Frequency	Maximun Area Scan resolution ($\Delta x_{Area}, \Delta y_{Area}$)	Maximun Zoom Scan spatial resolution ($\Delta x_{Zoom}, \Delta y_{Zoom}$)	Maximun Zoom Scan spatial resolution			Minimum zoom scan volume (x,y,z)
			Uniform Grid	Graded Grad		
				$\Delta z_{Zoom}(n)$	$\Delta z_{Zoom}(1)^*$	
$\leq 2\text{GHz}$	$\leq 15\text{mm}$	$\leq 8\text{mm}$	$\leq 5\text{mm}$	$\leq 4\text{mm}$	$\leq 1.5 * \Delta z_{Zoom}(n-1)$	$\geq 30\text{mm}$
2-3GHz	$\leq 12\text{mm}$	$\leq 5\text{mm}$	$\leq 5\text{mm}$	$\leq 4\text{mm}$	$\leq 1.5 * \Delta z_{Zoom}(n-1)$	$\geq 30\text{mm}$
3-4GHz	$\leq 12\text{mm}$	$\leq 5\text{mm}$	$\leq 4\text{mm}$	$\leq 3\text{mm}$	$\leq 1.5 * \Delta z_{Zoom}(n-1)$	$\geq 28\text{mm}$
4-5GHz	$\leq 10\text{mm}$	$\leq 4\text{mm}$	$\leq 3\text{mm}$	$\leq 2.5\text{mm}$	$\leq 1.5 * \Delta z_{Zoom}(n-1)$	$\geq 25\text{mm}$
5-6GHz	$\leq 10\text{mm}$	$\leq 4\text{mm}$	$\leq 2\text{mm}$	$\leq 2\text{mm}$	$\leq 1.5 * \Delta z_{Zoom}(n-1)$	$\geq 22\text{mm}$

Step 4: Power Drift Monitoring

The Power Drift Measurement measures the field at the same location as the most recent power reference measurement job within the same procedure, and with the same settings. The Power Drift Measurement gives the field difference in dB from the reading conducted within the last Power Reference Measurement. If the value changed by more than 5%, the evaluation should be retested.

5 SAR Verification Procedure

5.1 Tissue Simulating Liquids

For the measurement of the field distribution inside the SAM phantom with DASY, the phantom must be filled with around 25 liters of homogeneous body tissue simulating liquid. For head SAR testing, the liquid height from the ear reference point (ERP) of the phantom to the liquid top surface is larger than 15 cm, which is shown in Fig. 5.1. For body SAR testing, the liquid height from the center of the flat phantom to the liquid top surface is larger than 15 cm, which is shown as followed:

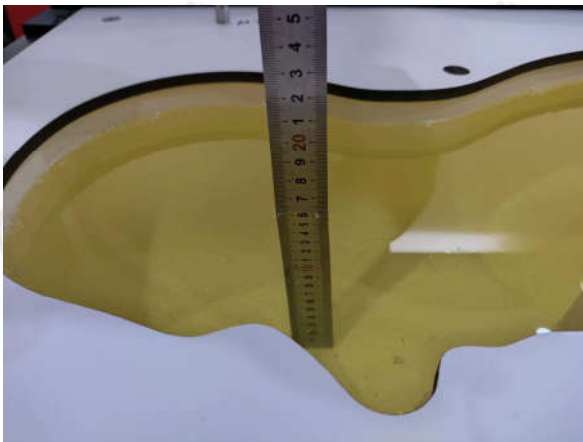


Photo of Liquid Height for Head SAR

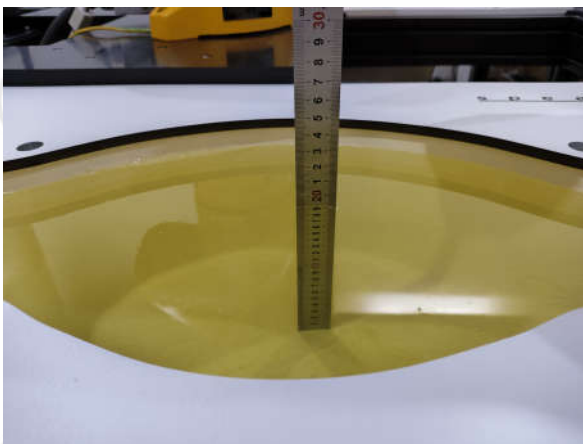


Photo of Liquid Height for Body SAR

5.2 Tissue Verification

The following materials are used for producing the tissue-equivalent materials.

(Liquids used for tests are marked with ☒):

Ingredients (% of weight)	Frequency (MHz)						
	Head Tissue						
Tissue Type							
frequency band	<input type="checkbox"/> 835	<input type="checkbox"/> 1800	<input type="checkbox"/> 2000	<input type="checkbox"/> 2300	<input checked="" type="checkbox"/> 2450	<input type="checkbox"/> 2600	<input type="checkbox"/> 5200-5800
Water	41.45	52.64	54.9	62.82	62.7	55.242	65.52
Salt (NaCl)	1.45	0.36	0.18	0.51	0.5	0.306	0.0
Sugar	56.0	0.0	0.0	0.0	0.0	0.0	0.0
HEC	1.0	0.0	0.0	0.0	0.0	0.0	0.0
Bactericide	0.1	0.0	0.0	0.0	0.0	0.0	0.0
Triton X-100	0.0	0.0	0.0	0.0	36.8	0.0	17.24
DGBE	0.0	47.0	44.92	36.67	0.0	44.452	0.0
Diethylenglycol monohexylether	0.0	0.0	0.0	0.0	0.0	0.0	17.24

Salt: 99+% Pure Sodium Chloride

Sugar: 98+% Pure Sucrose

Water: De-ionized, 16MΩ+ resistivity

HEC: Hydroxyethyl Cellulose

DGBE: 99+% Di(ethylene glycol) butyl ether, [2-(2-butoxyethoxy)ethanol]

Triton X-100(ultra pure): Polyethylene glycol mono [4-(1,1,3,3-tetramethylbutyl)phenyl]ether

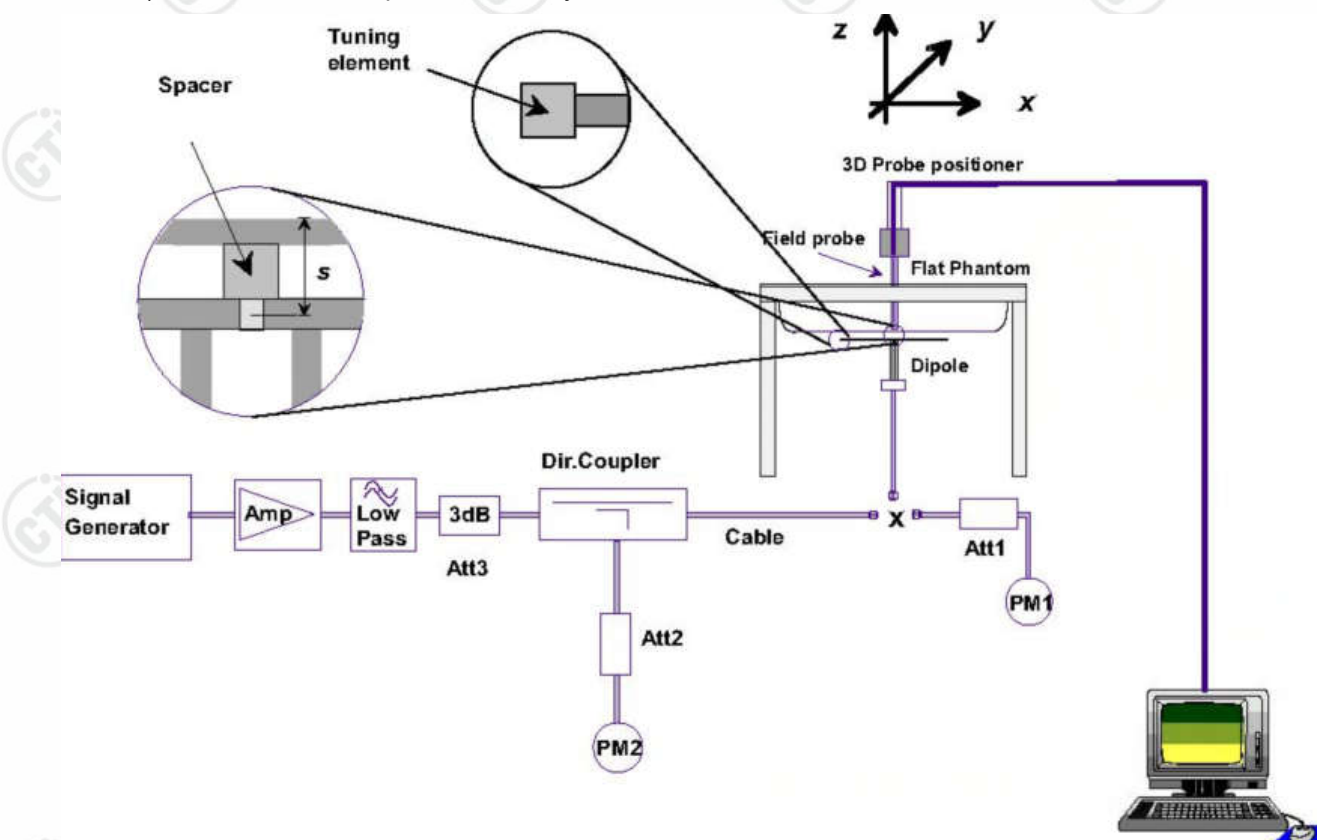
Tissue simulating liquids: parameters:

Tissue Type	Measured Frequency (MHz)	Target Tissue		Measured Tissue		Deviation (Within ±5%)		Liquid Temp.	Test Date
		ϵ_r (+/-5%)	σ (S/m) (+/-5%)	ϵ_r	σ (S/m)	$\Delta\epsilon_r$ %	$\Delta\sigma$ %		
2450 Head	2450	39.20 (37.24~41.16)	1.80 (1.71~1.89)	40.08	1.774	2.24	-1.44	20.77°C	1/9/2025
	2402	39.28 (37.32~41.24)	1.76 (1.67~1.85)	40.19	1.734	2.32	-1.48	20.77°C	1/9/2025
	2440	39.21 (37.25~41.17)	1.79 (1.70~1.88)	39.96	1.757	1.91	-1.84	20.77°C	1/9/2025
	2441	39.21 (37.25~41.17)	1.79 (1.70~1.88)	40.04	1.759	2.12	-1.73	20.77°C	1/9/2025
	2480	39.16 (37.20~41.12)	1.83 (1.74~1.92)	39.87	1.821	1.81	-0.49	20.77°C	1/9/2025
ϵ_r = Relative permittivity, σ = Conductivity									

5.3 System check procedure

The System check is performed by using a System check dipole which is positioned parallel to the planar part of the SAM phantom at the reference point. The distance of the dipole to the SAM phantom is determined by a spacer. The dipole is connected to the signal source consisting of signal generator and amplifier via a directional coupler, N-connector cable and adaption to SMA. It is fed with a power of 250mW. To adjust this power a power meter is used. The power sensor is connected to the cable before the System check to measure the power at this point and do adjustments at the signal generator. At the outputs of the directional coupler both return loss as well as forward power are controlled during the validation to make sure that emitted power at the dipole is kept constant. This can also be checked by the power drift measurement after the test (result on plot).

System check results have to be equal or near the values determined during dipole calibration (target SAR in table above) with the relevant liquids and test system.



5.4 System check results

The system Check is performed for verifying the accuracy of the complete measurement system and performance of the software. The following table shows System check results for all frequency bands and tissue liquids used during the tests (plot(s) see annex A).

System Check (MHz)	Target SAR (1W) (+/-10%)		Measured SAR (Normalized to 1W)		Measured SAR (Tolerances)		Liquid Temp.	Test Date
	1-g (mW/g)	10-g (mW/g)	1-g (mW/g)	10-g (mW/g)	1-g(%)	10-g(%)		
D2450 Head	53.60 (48.24~58.96)	24.70 (22.23~27.17)	54.80	25.60	2.24	3.64	20.77°C	1/9/2025

Note: All SAR values are normalized to 1W forward power.

6 SAR Measurement variability and uncertainty

6.1 SAR measurement variability

In accordance with published RF Exposure KDB procedure 865664 D01 SAR measurement 100 MHz to 6 GHz v01r04. These additional measurements are repeated after the completion of all measurements requiring the same head or body tissue-equivalent medium in a frequency band. The test device should be returned to ambient conditions (normal room temperature) with the battery fully charged before it is re-mounted on the device holder for the repeated measurement(s) to minimize any unexpected variations in the repeated results. The same procedures should be adapted for measurements according to extremity exposure limits by applying a factor of 2.5 for extremity exposure.

- 1) Repeated measurement is not required when the original highest measured SAR is < 2.0 W/kg; steps 2) through 4) do not apply.
- 2) When the original highest measured SAR is ≥ 2.0 W/kg, repeat that measurement once.
- 3) Perform a second repeated measurement only if the ratio of largest to smallest SAR for the original and first repeated measurements is > 3.0 or when the original or repeated measurement is ≥ 3.6 W/kg ($\sim 10\%$ from the 10-g SAR limit).
- 4) Perform a third repeated measurement only if the original, first or second repeated measurement is ≥ 3.75 W/kg and the ratio of largest to smallest SAR for the original, first and second repeated measurements is > 1.20 .

6.2 SAR measurement uncertainty

Per KDB865664 D01 SAR Measurement 100 MHz to 6 GHz v01r04, when the highest measured 1-g SAR within a frequency band is < 1.5 W/kg, the extensive SAR measurement uncertainty analysis described in IEEE Std 1528-2013 is not required in SAR reports submitted for equipment approval. The equivalent ratio (1.5/1.6) is applied to extremity and occupational exposure conditions.

7 SAR Test Configuration

7.1 Bluetooth Test Configurations

The EUT is a Bluetooth watch.

The EUT have only one Antenna and It supports BT function.

For BT testing, the EUT is configured with the BT continuous TX tool through engineering command.

8 SAR Test Results

8.1 Conducted Power Measurements

8.1.1 Conducted Power of Bluetooth

The output power of BT is as following:

For BT 3.0:

Average Conducted Power(dBm)				Tune up tolerance (dBm)	Tune-up Power(dBm)
Channel	0CH	39CH	78CH		
GFSK	11.51	10.57	10.84	11.0 ± 1.0	12.00
$\pi/4$ DQPSK	11.54	10.50	10.88	11.0 ± 1.0	
8DPSK	11.51	10.51	10.86	11.0 ± 1.0	

Note: channel /Frequency: 0/2402, 39/2441, 78/2480.

For BT (BLE)

Average Conducted Power(dBm)				Tune up tolerance (dBm)	Tune-up Power(dBm)
Channel	0CH	20CH	39CH		
BLE_1M	11.48	10.44	10.78	11.0 ± 1.0	12.00
BLE_2M	11.49	10.47	10.83	11.0 ± 1.0	

Note: channel /Frequency: 0/2402, 20/2440, 39/2480.

8.2 SAR test results

Notes:

1) Per KDB447498 D01v06, testing of other required channels within the operating mode of a frequency band is not required when the reported 1-g or 10-g SAR for the mid-band or highest output power channel is: ≤ 0.8 W/kg or 2.0 W/kg, for 1-g or 10-g respectively, when the transmission band is ≤ 100 MHz. When the maximum output power variation across the required test channels is $> \frac{1}{2}$ dB, instead of the middle channel, the highest output power channel must be used.

2) Per KDB447498 D01v06, All measurement SAR result is scaled-up to account for tune-up tolerance is compliant.

3) Per KDB865664 D01v01r04, for each frequency band, repeated SAR measurement is required only when the measured SAR is ≥ 0.8 W/Kg; if the deviation among the repeated measurement is $\leq 20\%$, and the measured SAR < 1.45 W/Kg, only one repeated measurement is required.

4) Per KDB865664 D02v01r02, SAR plot is only required for the highest measured SAR in each exposure configuration, wireless mode and frequency band combination; Plots are also required when the measured SAR is > 1.5 W/kg, or > 7.0 W/kg for occupational exposure. The same procedures should be adapted for measurements according to extremity exposure limits by applying a factor of 2.5 for extremity exposure. The published RF exposure KDB procedures may require additional plots; for example, to support SAR to peak location separation ratio test exclusion and/or volume scan post-processing (Refer to appendix B for details).

8.2.1 Results overview of Bluetooth

For BT SAR results:

Test Position With 0mm	Test channel /Freq. (MHz)	Test Mode	SAR Value (W/kg)		Power Drift (dBm)	Conducted Power (dBm)	Tune-up power (dBm)	Scaled SAR _{10-g} (W/kg)	Actual Duty Cycle	Reported SAR _{10-g} (W/kg)	Liquid Temp.	Plot Page
			1-g	10-g								
Back Side	2441	π/4D QPSK	0.134	0.060	-0.140	11.54	12.00	0.067	100.00 %	0.067	20.77 °C	-
Left Side	2441	π/4D QPSK	0.018	0.005	0.000	11.54	12.00	0.006	100.00 %	0.006	20.77 °C	-
Right Side	2441	π/4D QPSK	0.030	0.012	0.200	11.54	12.00	0.014	100.00 %	0.014	20.77 °C	-
Top Side	2441	π/4D QPSK	0.080	0.030	-0.010	11.54	12.00	0.033	100.00 %	0.033	20.77 °C	-
Bottom Side	2441	π/4D QPSK	0.046	0.019	-0.160	11.54	12.00	0.021	100.00 %	0.021	20.77 °C	-
Back Side	2402	π/4D QPSK	0.077	0.037	0.100	10.50	12.00	0.052	100.00 %	0.052	20.77 °C	-
Back Side	2480	π/4D QPSK	0.226	0.099	-0.130	10.88	12.00	0.129	100.00 %	0.129	20.77 °C	44

Test Position With 10mm	Test channel /Freq. (MHz)	Test Mode	SAR Value (W/kg)		Power Drift (dBm)	Conducted Power (dBm)	Tune-up power (dBm)	Scaled SAR _{1-g} (W/kg)	Actual Duty Cycle	Reported SAR _{1-g} (W/kg)	Liquid Temp.	Plot Page
			1-g	10-g								
Front Side	2441	π/4D QPSK	0.083	0.041	0.040	11.54	12.00	0.092	100.00 %	0.092	20.77 °C	-
Front Side	2402	π/4D QPSK	0.072	0.037	0.010	10.50	12.00	0.101	100.00 %	0.101	20.77 °C	-
Front Side	2480	π/4D QPSK	0.123	0.062	-0.010	10.88	12.00	0.159	100.00 %	0.159	20.77 °C	45

Note:

Scaled SAR = SAR Value * 10(0.1*(Tune up Power-Conducted Power))

Reported SAR = SAR Value * 10(0.1*(Tune up Power-Conducted Power))/ Duty factor * 100

For BLE SAR results:

Test Position With 0mm	Test channel /Freq. (MHz)	Test Mode	SAR Value (W/kg)		Power Drift (dBm)	Conducted Power (dBm)	Tune-up power (dBm)	Scaled SAR 10-g (W/kg)	Actual Duty Cycle	Reported SAR 10-g (W/kg)	Liquid Temp.	Plot Page
			1-g	10-g								
Back Side	2402	GFSK	0.118	0.059	-0.090	11.49	12.00	0.066	100.00 %	0.066	20.77 °C	-
Left Side	2402	GFSK	0.034	0.013	0.000	11.49	12.00	0.014	100.00 %	0.014	20.77 °C	-
Right Side	2402	GFSK	0.013	0.005	0.010	11.49	12.00	0.006	100.00 %	0.006	20.77 °C	-
Top Side	2402	GFSK	0.101	0.037	0.000	11.49	12.00	0.042	100.00 %	0.042	20.77 °C	-
Bottom Side	2402	GFSK	0.041	0.017	0.020	11.49	12.00	0.019	100.00 %	0.019	20.77 °C	-
Back Side	2440	GFSK	0.147	0.071	-0.050	10.47	12.00	0.102	100.00 %	0.102	20.77 °C	-
Back Side	2480	GFSK	0.165	0.073	-0.100	10.83	12.00	0.096	100.00 %	0.096	20.77 °C	46

Test Position With 10mm	Test channel /Freq. (MHz)	Test Mode	SAR Value (W/kg)		Power Drift (dBm)	Conducted Power (dBm)	Tune-up power (dBm)	Scaled SAR 1-g (W/kg)	Actual Duty Cycle	Reported SAR 1-g (W/kg)	Liquid Temp.	Plot Page
			1-g	10-g								
Front Side	2402	GFSK	0.153	0.076	0.060	11.49	12.00	0.172	100.00 %	0.172	20.77 °C	-
Front Side	2440	GFSK	0.106	0.053	-0.060	10.47	12.00	0.151	100.00 %	0.151	20.77 °C	-
Front Side	2480	GFSK	0.241	0.121	-0.150	10.83	12.00	0.316	100.00 %	0.316	20.77 °C	47

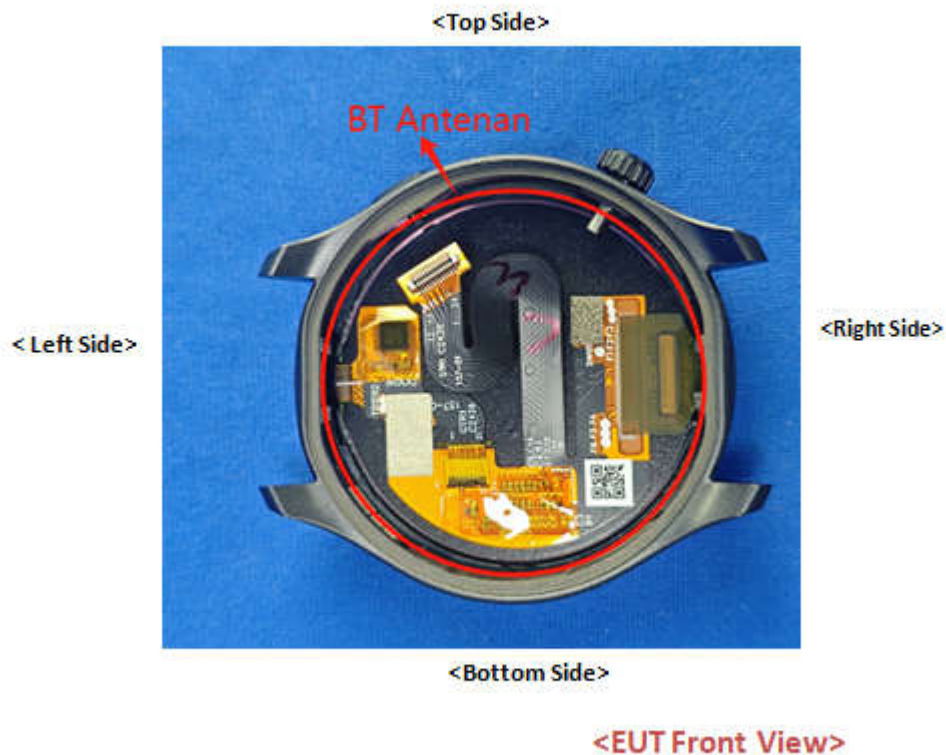
Note:

Scaled SAR = SAR Value * 10(0.1*(Tune up Power-Conducted Power))

Reported SAR = SAR Value * 10(0.1*(Tune up Power-Conducted Power))/ Duty factor * 100

8.3 Multiple Transmitter Information

The location of the antennas inside this device is shown as below picture:



8.4 Stand-alone SAR

8.4.1 Per FCC KDB 447498D01:

- 1) The 1-g and 10-g SAR test exclusion thresholds for 100 MHz to 6 GHz at test separation distances ≤ 50 mm are determined by:

$$[(\text{max. power of channel, including tune-up tolerance, mW}) / (\text{min. test separation distance, mm})] \cdot [\sqrt{f(\text{GHz})}] \leq$$

3.0 for 1-g SAR and ≤ 7.5 for 10-g extremity SAR, where

- $f(\text{GHz})$ is the RF channel transmit frequency in GHz
- Power and distance are rounded to the nearest mW and mm before calculation
- The result is rounded to one decimal place for comparison

When the minimum test separation distance is < 5 mm, a distance of 5 mm is applied to determine SAR test exclusion.

8.5 Simultaneous Transmission Possibilities and Conclusion

The device has one antenna, there is not simultaneous transmission possibility and the reported SAR results is not exceed the SAR limit, so the tested result is comply with the FCC limit.

Annex A: Appendix A: SAR System performance Check Plots

(Please See Appendix A)

Annex B: Appendix B: SAR Measurement results Plots

(Please See Appendix B)

Annex C: Appendix C: Calibration reports

(Please See Appendix C)

Annex D: Appendix D: Photo documentation

(Please See Appendix D)

声明 Statement

1. 检测报告无批准人签字、“专用章”及报告骑缝章无效;

This report is considered invalid without approved signature, special seal and the seal on the perforation;

2. 报告中公司名称及地址、样品及样品信息由申请者提供, 申请者应对其真实性负责, CTI 不负责验证其真实性;

The Company Name shown on Report and Address, the sample(s) and sample information was/were provided by the applicant who should be responsible for the authenticity which CTI hasn't verified;

3. 本报告检测结果仅对受测样品负责;

The result(s) shown in this report refer(s) only to the sample(s) tested;

4. 除非另有说明, 报告参照 ILAC-G8:09/2019/CNAS-GL015: 2022 使用简单接受判定规则进行符合性判定;

Unless otherwise stated, the decision rule for conformity reporting is based on Binary Statement for Simple Acceptance Rule stated in ILAC-G8:09/2019/CNAS-GL015:2022;

5. 未经 CTI 书面同意, 不得部分复制本报告;

Without written approval of CTI, this report can't be reproduced except in full;

6. 如检测报告中的英文内容与中文内容有差异, 以中文为准。

In case of any discrepancy between the English version and Chinese version of the testing reports (if generated), the Chinese version shall prevail.

*** 报告结束 ***

*** End of Report ***

Appendix A:SAR System performance Check Plots
Table of contents
System Performance Check-D2450

Test Laboratory: CTI SAR Lab

Systemcheck 2450-Head**DUT: D2450V2 - SN959; Type: D2450V2; Serial: SN959**

Communication System: UID 0, CW (0); Communication System Band: D2450 (2450.0 MHz); Frequency: 2450 MHz; Communication System PAR: 0 dB; PMF: 1
 Medium parameters used: $f = 2450$ MHz; $\sigma = 1.774$ S/m; $\epsilon_r = 40.079$; $\rho = 1000$ kg/m³

Phantom section: Flat Section

Measurement Standard: DASY5 (IEEE/IEC/ANSI C63.19-2007)

DASY Configuration:

- Probe: EX3DV4 - SN7328; ConvF(7.69, 7.69, 7.69) @ 2450 MHz; Calibrated: 4/18/2024
 - Modulation Compensation:
- Sensor-Surface: 1.4mm (Mechanical Surface Detection), $z = 1.0, 31.0$
- Electronics: DAE4 Sn1458; Calibrated: 1/23/2024
- Phantom: Twin SAM V5.0; Type: QD000P40CD; Serial: 1875
- DASY52 52.10.4(1535); SEMCAD X 14.6.14(7501)

Configuration/d=10mm,Pin=100mW/Area Scan (10x10x1): Measurement grid: $dx=12$ mm, $dy=12$ mm

Maximum value of SAR (measured) = 7.23 W/kg

Configuration/d=10mm,Pin=100mW/Zoom Scan (7x7x7)/Cube 0: Measurement grid: $dx=5$ mm, $dy=5$ mm, $dz=5$ mm

Reference Value = 72.51 V/m; Power Drift = -0.03 dB

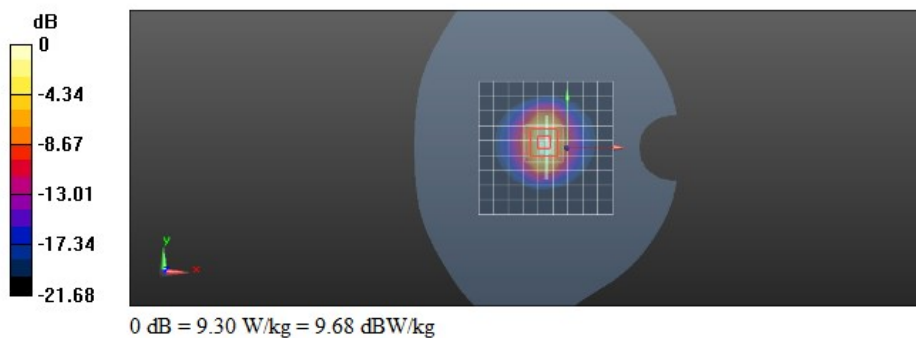
Peak SAR (extrapolated) = 11.6 W/kg

SAR(1 g) = 5.48 W/kg; SAR(10 g) = 2.56 W/kg

Smallest distance from peaks to all points 3 dB below = 9 mm

Ratio of SAR at M2 to SAR at M1 = 47.4%

Maximum value of SAR (measured) = 9.30 W/kg



Appendix B:SAR Measurement results Plots

Table of contents
Bluetooth

Test Laboratory: CTI SAR Lab

Smart Watch BT $\pi/4$ DQPSK 2480CH Back Side 0mm

DUT: Smart Watch; Type: NA; Serial: NA

Communication System: UID 0, Bluetooth (0); Communication System Band: Bluetooth 3.0; Frequency: 2480 MHz; Communication System PAR: 0 dB; PMF: 1
Medium parameters used: $f = 2480$ MHz; $\sigma = 1.821$ S/m; $\epsilon_r = 39.874$; $\rho = 1000$ kg/m³

Phantom section: Flat Section

Measurement Standard: DASY5 (IEEE/IEC/ANSI C63.19-2007)

DASY Configuration:

- Probe: EX3DV4 - SN7328; ConvF(7.69, 7.69, 7.69) @ 2480 MHz; Calibrated: 4/18/2024
 - Modulation Compensation:
- Sensor-Surface: 1.4mm (Mechanical Surface Detection), $z = 1.0, 31.0$
- Electronics: DAE4 Sn1458; Calibrated: 1/23/2024
- Phantom: Twin SAM V5.0; Type: QD000P40CD; Serial: 1875
- DASY52 52.10.4(1535); SEMCAD X 14.6.14(7501)

Configuration/Body/Area Scan (7x8x1): Measurement grid: $dx=12$ mm, $dy=12$ mm

Maximum value of SAR (measured) = 0.387 W/kg

Configuration/Body/Zoom Scan (7x7x7)/Cube 0: Measurement grid: $dx=5$ mm, $dy=5$ mm, $dz=1.5$ mm

Reference Value = 13.50 V/m; Power Drift = -0.13 dB

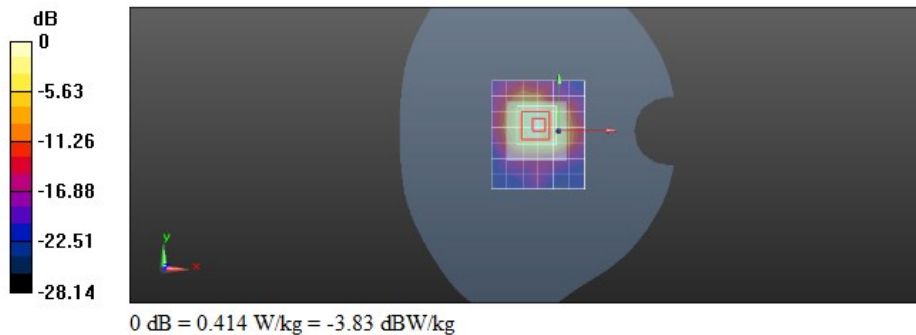
Peak SAR (extrapolated) = 0.629 W/kg

SAR(1 g) = 0.226 W/kg; SAR(10 g) = 0.099 W/kg

Smallest distance from peaks to all points 3 dB below = 6.4 mm

Ratio of SAR at M2 to SAR at M1 = 70.6%

Maximum value of SAR (measured) = 0.414 W/kg



Test Laboratory: CTI SAR Lab

Smart Watch BT $\pi/4$ DQPSK 2480CH Front Side 10mm

DUT: Smart Watch; Type: NA; Serial: NA

Communication System: UID 0, Bluetooth (0); Communication System Band: Bluetooth 3.0; Frequency: 2480 MHz; Communication System PAR: 0 dB; PMF: 1
Medium parameters used: $f = 2480$ MHz; $\sigma = 1.821$ S/m; $\epsilon_r = 39.874$; $\rho = 1000$ kg/m³

Phantom section: Flat Section

Measurement Standard: DASY5 (IEEE/IEC/ANSI C63.19-2007)

DASY Configuration:

- Probe: EX3DV4 - SN7328; ConvF(7.69, 7.69, 7.69) @ 2480 MHz; Calibrated: 4/18/2024
 - Modulation Compensation:
- Sensor-Surface: 1.4mm (Mechanical Surface Detection), $z = 1.0, 31.0$
- Electronics: DAE4 Sn1458; Calibrated: 1/23/2024
- Phantom: Twin SAM V5.0; Type: QD000P40CD; Serial: 1875
- DASY52 52.10.4(1535); SEMCAD X 14.6.14(7501)

Configuration/Body/Area Scan (7x8x1): Measurement grid: $dx=12$ mm, $dy=12$ mm

Maximum value of SAR (measured) = 0.181 W/kg

Configuration/Body/Zoom Scan (7x7x7)/Cube 0: Measurement grid: $dx=5$ mm, $dy=5$ mm, $dz=1.5$ mm

Reference Value = 8.392 V/m; Power Drift = -0.01 dB

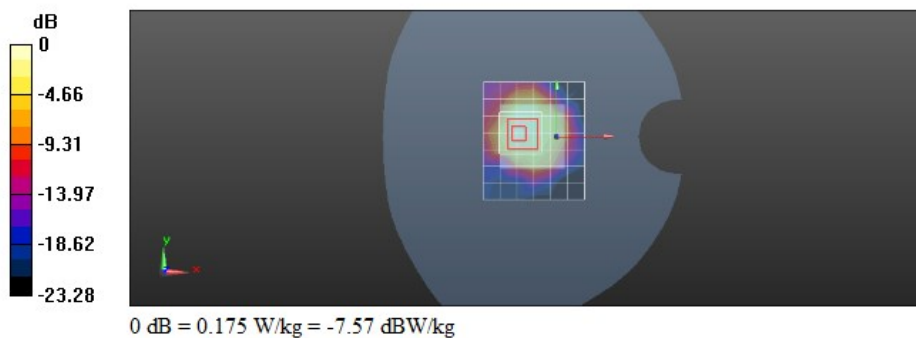
Peak SAR (extrapolated) = 0.229 W/kg

SAR(1 g) = 0.123 W/kg; SAR(10 g) = 0.062 W/kg

Smallest distance from peaks to all points 3 dB below = 7.3 mm

Ratio of SAR at M2 to SAR at M1 = 84.3%

Maximum value of SAR (measured) = 0.175 W/kg



Test Laboratory: CTI SAR Lab

Smart Watch BLE GFSK 2480CH Back Side 0mm

DUT: Smart Watch; Type: NA; Serial: NA

Communication System: UID 0, Bluetooth (0); Communication System Band: Bluetooth 4.0; Frequency: 2480 MHz; Communication System PAR: 0 dB; PMF: 1
Medium parameters used: $f = 2480$ MHz; $\sigma = 1.821$ S/m; $\epsilon_r = 39.874$; $\rho = 1000$ kg/m³

Phantom section: Flat Section

Measurement Standard: DASY5 (IEEE/IEC/ANSI C63.19-2007)

DASY Configuration:

- Probe: EX3DV4 - SN7328; ConvF(7.69, 7.69, 7.69) @ 2480 MHz; Calibrated: 4/18/2024
 - Modulation Compensation:
- Sensor-Surface: 1.4mm (Mechanical Surface Detection), $z = 1.0, 31.0$
- Electronics: DAE4 Sn1458; Calibrated: 1/23/2024
- Phantom: Twin SAM V5.0; Type: QD000P40CD; Serial: 1875
- DASY52 52.10.4(1535); SEMCAD X 14.6.14(7501)

Configuration/Body/Area Scan (7x8x1): Measurement grid: $dx=12$ mm, $dy=12$ mm

Maximum value of SAR (measured) = 0.288 W/kg

Configuration/Body/Zoom Scan (7x7x7)/Cube 0: Measurement grid: $dx=5$ mm, $dy=5$ mm, $dz=1.5$ mm

Reference Value = 11.64 V/m; Power Drift = -0.10 dB

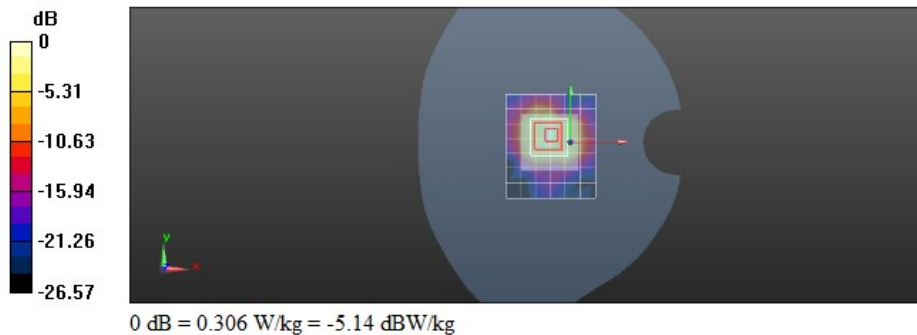
Peak SAR (extrapolated) = 0.468 W/kg

SAR(1 g) = 0.165 W/kg; SAR(10 g) = 0.073 W/kg

Smallest distance from peaks to all points 3 dB below = 5.7 mm

Ratio of SAR at M2 to SAR at M1 = 70.5%

Maximum value of SAR (measured) = 0.306 W/kg



Test Laboratory: CTI SAR Lab

Smart Watch BLE GFSK 2480CH Front Side 10mm

DUT: Smart Watch; Type: NA; Serial: NA

Communication System: UID 0, Bluetooth (0); Communication System Band: Bluetooth 4.0; Frequency: 2480 MHz; Communication System PAR: 0 dB; PMF: 1
Medium parameters used: $f = 2480$ MHz; $\sigma = 1.821$ S/m; $\epsilon_r = 39.874$; $\rho = 1000$ kg/m³

Phantom section: Flat Section

Measurement Standard: DASY5 (IEEE/IEC/ANSI C63.19-2007)

DASY Configuration:

- Probe: EX3DV4 - SN7328; ConvF(7.69, 7.69, 7.69) @ 2480 MHz; Calibrated: 4/18/2024
 - Modulation Compensation:
- Sensor-Surface: 1.4mm (Mechanical Surface Detection), $z = 1.0, 31.0$
- Electronics: DAE4 Sn1458; Calibrated: 1/23/2024
- Phantom: Twin SAM V5.0; Type: QD000P40CD; Serial: 1875
- DASY52 52.10.4(1535); SEMCAD X 14.6.14(7501)

Configuration/Body/Area Scan (7x8x1): Measurement grid: $dx=12$ mm, $dy=12$ mm

Maximum value of SAR (measured) = 0.368 W/kg

Configuration/Body/Zoom Scan (7x7x7)/Cube 0: Measurement grid: $dx=5$ mm, $dy=5$ mm, $dz=1.5$ mm

Reference Value = 11.87 V/m; Power Drift = -0.15 dB

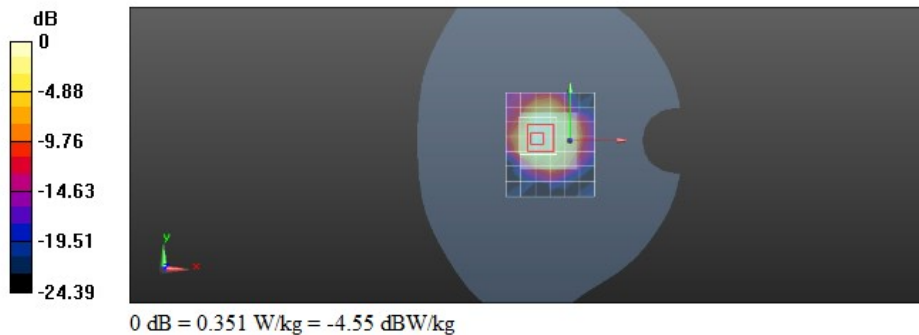
Peak SAR (extrapolated) = 0.441 W/kg

SAR(1 g) = 0.241 W/kg; SAR(10 g) = 0.121 W/kg

Smallest distance from peaks to all points 3 dB below = 8 mm

Ratio of SAR at M2 to SAR at M1 = 82.8%

Maximum value of SAR (measured) = 0.351 W/kg



Appendix C: Calibration reports

Table of contents
Probe EX3DV4 SN:7328
DAE4 SN:1458
Dipole D2450V2 SN:959

Client

CTI

Certificate No: 24J02Z000123

CALIBRATION CERTIFICATE

Object EX3DV4 - SN : 7328

Calibration Procedure(s) FF-Z11-004-02
Calibration Procedures for Dosimetric E-field Probes




Calibration date: April 18, 2024

This calibration Certificate documents the traceability to national standards, which realize the physical units of measurements(SI). The measurements and the uncertainties with confidence probability are given on the following pages and are part of the certificate.

All calibrations have been conducted in the closed laboratory facility: environment temperature(22±3)°C and humidity<70%.

Calibration Equipment used (M&TE critical for calibration)

Primary Standards	ID #	Cal Date(Calibrated by, Certificate No.)	Scheduled Calibration
Power Meter NRP2	106277	19-Oct-23(CTTL, No.J23X11026)	Oct-24
Power sensor NRP8S	104291	19-Oct-23(CTTL, No.J23X11026)	Oct-24
Power sensor NRP8S	104292	19-Oct-23(CTTL, No.J23X11026)	Oct-24
Reference 10dBAttenuator	18N50W-10dB	19-Jan-23(CTTL, No.J23X00212)	Jan-25
Reference 20dBAttenuator	18N50W-20dB	19-Jan-23(CTTL, No.J23X00211)	Jan-25
Reference Probe EX3DV4	SN 7464	22-Jan-24(SPEAG, No.EX-7464_Jan24)	Jan-25
DAE4	SN 1555	24-Aug-23(SPEAG, No.DAE4-1555_Aug23)	Aug-24
Secondary Standards	ID #	Cal Date(Calibrated by, Certificate No.)	Scheduled Calibration
SignalGenerator MG3700A	6201052605	12-Jun-23(CTTL, No.J23X05434)	Jun-24
SignalGenerator APSIN26G	181-33A6D0700-1959	26-Mar-24(CTTL, No.24J02X002468)	Mar-25
Network Analyzer E5071C	MY46110673	10-Jan-23(CTTL, No.J23X00104)	Jan-24
Reference 10dBAttenuator	BT0520	11-May-23(CTTL, No.J23X04061)	May-25
Reference 20dBAttenuator	BT0267	11-May-23(CTTL, No.J23X04062)	May-25
OCP DAK-12	SN 1174	25-Oct-23(SPEAG, No.OCP-DAK12-1174_Oct23)	Oct-24

	Name	Function	Signature
Calibrated by:	Yu Zongying	SAR Test Engineer	
Reviewed by:	Lin Jun	SAR Test Engineer	
Approved by:	Qi Dianyuan	SAR Project Leader	

Issued: April 21, 2024

This calibration certificate shall not be reproduced except in full without written approval of the laboratory.



Add: No.52 HuaYuanBei Road, Haidian District, Beijing, 100191, China
Tel: +86-10-62304633-2117
E-mail: emf@caict.ac.cn <http://www.caict.ac.cn>

Glossary:

TSL	tissue simulating liquid
NORM _{x,y,z}	sensitivity in free space
ConvF	sensitivity in TSL / NORM _{x,y,z}
DCP	diode compression point
CF	crest factor (1/duty_cycle) of the RF signal
A,B,C,D	modulation dependent linearization parameters
Polarization Φ	Φ rotation around probe axis
Polarization θ	θ rotation around an axis that is in the plane normal to probe axis (at measurement center), i $\theta=0$ is normal to probe axis

Connector Angle information used in DASY system to align probe sensor X to the robot coordinate system

Calibration is Performed According to the Following Standards:

- IEEE Std 1528-2013, "IEEE Recommended Practice for Determining the Peak Spatial-Averaged Specific Absorption Rate (SAR) in the Human Head from Wireless Communications Devices: Measurement Techniques", June 2013
- IEC 62209-1, "Measurement procedure for the assessment of Specific Absorption Rate (SAR) from hand-held and body-mounted devices used next to the ear (frequency range of 300 MHz to 6 GHz)", July 2016
- IEC 62209-2, "Procedure to determine the Specific Absorption Rate (SAR) for wireless communication devices used in close proximity to the human body (frequency range of 30 MHz to 6 GHz)", March 2010
- KDB 865664, "SAR Measurement Requirements for 100 MHz to 6 GHz"

Methods Applied and Interpretation of Parameters:

- NORM_{x,y,z}:** Assessed for E-field polarization $\theta=0$ ($f \leq 900\text{MHz}$ in TEM-cell; $f > 1800\text{MHz}$: waveguide). NORM_{x,y,z} are only intermediate values, i.e., the uncertainties of NORM_{x,y,z} does not effect the E^2 -field uncertainty inside TSL (see below ConvF).
- NORM(f)_{x,y,z} = NORM_{x,y,z} * frequency_response** (see Frequency Response Chart). This linearization is implemented in DASY4 software versions later than 4.2. The uncertainty of the frequency response is included in the stated uncertainty of ConvF.
- DCP_{x,y,z}:** DCP are numerical linearization parameters assessed based on the data of power sweep (no uncertainty required). DCP does not depend on frequency nor media.
- PAR:** PAR is the Peak to Average Ratio that is not calibrated but determined based on the signal characteristics.
- A_{x,y,z}; B_{x,y,z}; C_{x,y,z}; VR_{x,y,z}:** A,B,C are numerical linearization parameters assessed based on the data of power sweep for specific modulation signal. The parameters do not depend on frequency nor media. VR is the maximum calibration range expressed in RMS voltage across the diode.
- ConvF and Boundary Effect Parameters:** Assessed in flat phantom using E-field (or Temperature Transfer Standard for $f \leq 800\text{MHz}$) and inside waveguide using analytical field distributions based on power measurements for $f > 800\text{MHz}$. The same setups are used for assessment of the parameters applied for boundary compensation (alpha, depth) of which typical uncertainty valued are given. These parameters are used in DASY4 software to improve probe accuracy close to the boundary. The sensitivity in TSL corresponds to NORM_{x,y,z} * ConvF whereby the uncertainty corresponds to that given for ConvF. A frequency dependent ConvF is used in DASY version 4.4 and higher which allows extending the validity from $\pm 50\text{MHz}$ to $\pm 100\text{MHz}$.
- Spherical isotropy (3D deviation from isotropy):** in a field of low gradients realized using a flat phantom exposed by a patch antenna.
- Sensor Offset:** The sensor offset corresponds to the offset of virtual measurement center from the probe tip (on probe axis). No tolerance required.
- Connector Angle:** The angle is assessed using the information gained by determining the NORM_x (no uncertainty required).



Add: No.52 HuaYuanBei Road, Haidian District, Beijing, 100191, China
Tel: +86-10-62304633-2117
E-mail: emf@caict.ac.cn <http://www.caict.ac.cn>

DASY/EASY – Parameters of Probe: EX3DV4 – SN:7328

Basic Calibration Parameters

	Sensor X	Sensor Y	Sensor Z	Unc (k=2)
Norm($\mu\text{V}/(\text{V}/\text{m})^2$) ^A	0.41	0.42	0.48	±10.0%
DCP(mV) ^B	102.4	104.2	98.1	

Modulation Calibration Parameters

UID	Communication System Name		A dB	B dB/ μV	C	D dB	VR mV	Unc ^E (k=2)
0	CW	X	0.0	0.0	1.0	0.00	151.7	±3.0%
		Y	0.0	0.0	1.0		153.3	
		Z	0.0	0.0	1.0		162.3	

The reported uncertainty of measurement is stated as the standard uncertainty of Measurement multiplied by the coverage factor $k=2$, which for a normal distribution Corresponds to a coverage probability of approximately 95%.

^A The uncertainties of Norm X, Y, Z do not affect the E²-field uncertainty inside TSL (see Page 4).

^B Numerical linearization parameter: uncertainty not required.

^E Uncertainty is determined using the max. deviation from linear response applying rectangular distribution and is expressed for the square of the field value.

Add: No.52 HuaYuanBei Road, Haidian District, Beijing, 100191, China
Tel: +86-10-62304633-2117
E-mail: emf@caict.ac.cn <http://www.caict.ac.cn>

DASY/EASY – Parameters of Probe: EX3DV4 – SN:7328

Calibration Parameter Determined in Head Tissue Simulating Media

f [MHz] ^C	Relative Permittivity ^F	Conductivity (S/m) ^F	ConvF X	ConvF Y	ConvF Z	Alpha ^G	Depth ^G (mm)	Unct. (k=2)
835	41.5	0.90	9.90	9.90	9.90	0.14	1.44	± 12.7%
1750	40.1	1.37	8.43	8.43	8.43	0.24	1.07	± 12.7%
1900	40.0	1.40	8.05	8.05	8.05	0.21	1.20	± 12.7%
2000	40.0	1.40	8.02	8.02	8.02	0.33	0.99	± 12.7%
2300	39.5	1.67	7.88	7.88	7.88	0.65	0.67	± 12.7%
2450	39.2	1.80	7.69	7.69	7.69	0.66	0.68	± 12.7%
2600	39.0	1.96	7.45	7.45	7.45	0.65	0.68	± 12.7%
5250	35.9	4.71	5.40	5.40	5.40	0.50	1.30	± 13.9%
5600	35.5	5.07	4.81	4.81	4.81	0.50	1.30	± 13.9%
5750	35.4	5.22	4.95	4.95	4.95	0.45	1.40	± 13.9%

^C Frequency validity above 300 MHz of ±100MHz only applies for DASY v4.4 and higher (Page 2), else it is restricted to ±50MHz. The uncertainty is the RSS of ConvF uncertainty at calibration frequency and the uncertainty for the indicated frequency band. Frequency validity below 300 MHz is ± 10, 25, 40, 50 and 70 MHz for ConvF assessments at 30, 64, 128, 150 and 220 MHz respectively. Above 5 GHz frequency validity can be extended to ± 110 MHz.

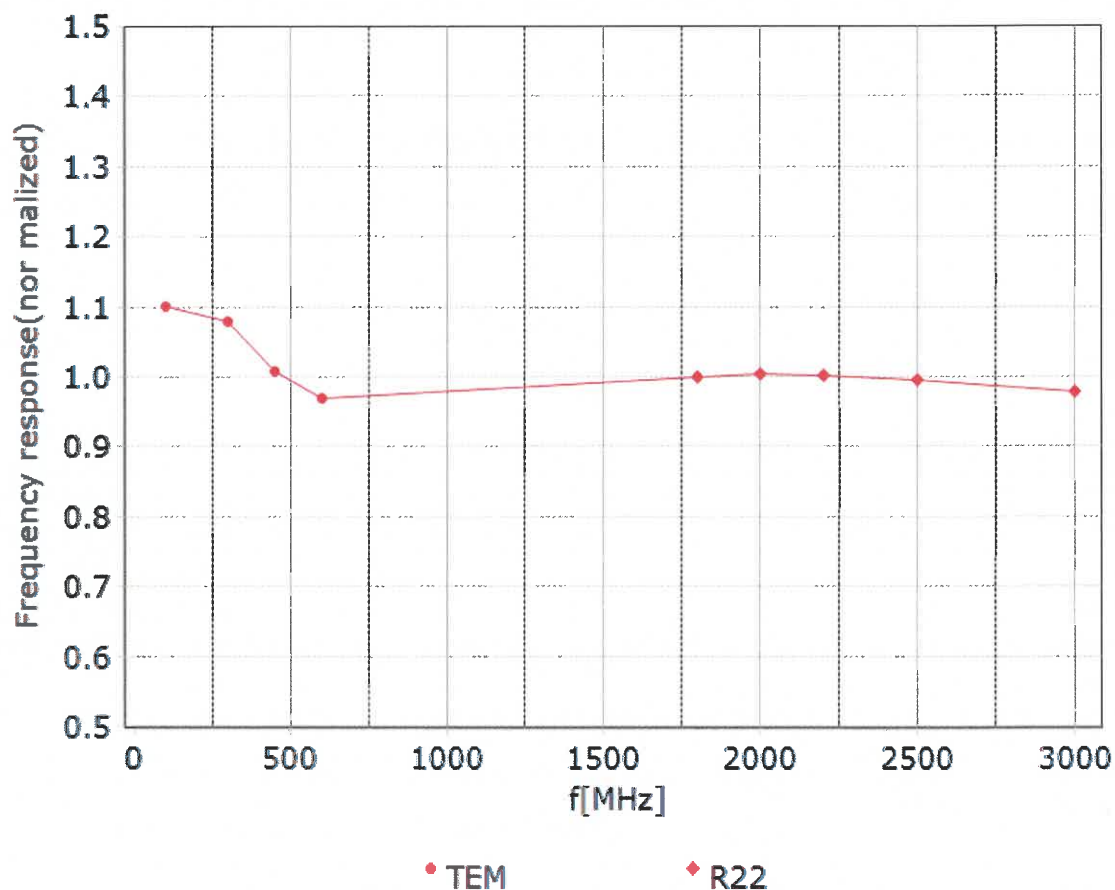
^F At frequency up to 6 GHz, the validity of tissue parameters (ϵ and σ) can be relaxed to ±10% if liquid compensation formula is applied to measured SAR values. The uncertainty is the RSS of the ConvF uncertainty for indicated target tissue parameters.

^G Alpha/Depth are determined during calibration. SPEAG warrants that the remaining deviation due to the boundary effect after compensation is always less than ± 1% for frequencies below 3 GHz and below ± 2% for the frequencies between 3-6 GHz at any distance larger than half the probe tip diameter from the boundary.



Add: No.52 HuaYuanBei Road, Haidian District, Beijing, 100191, China
Tel: +86-10-62304633-2117
E-mail: emf@caict.ac.cn <http://www.caict.ac.cn>

Frequency Response of E-Field (TEM-Cell: ifi110 EXX, Waveguide: R22)



Uncertainty of Frequency Response of E-field: $\pm 7.4\%$ ($k=2$)

Add: No.52 HuaYuanBei Road, Haidian District, Beijing, 100191, China

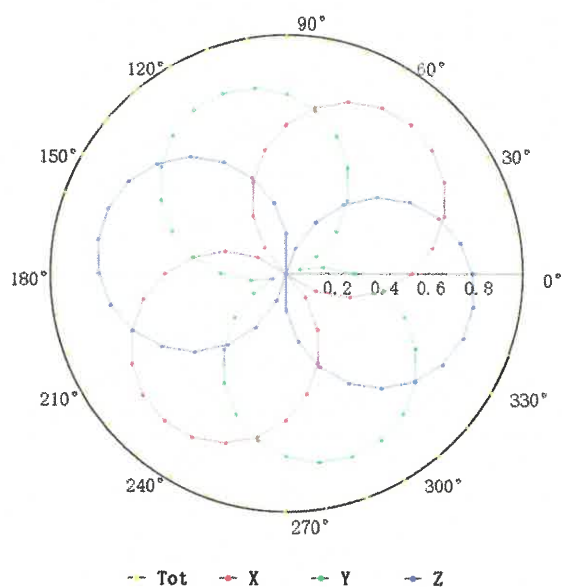
Tel: +86-10-62304633-2117

E-mail: emf@caict.ac.cn

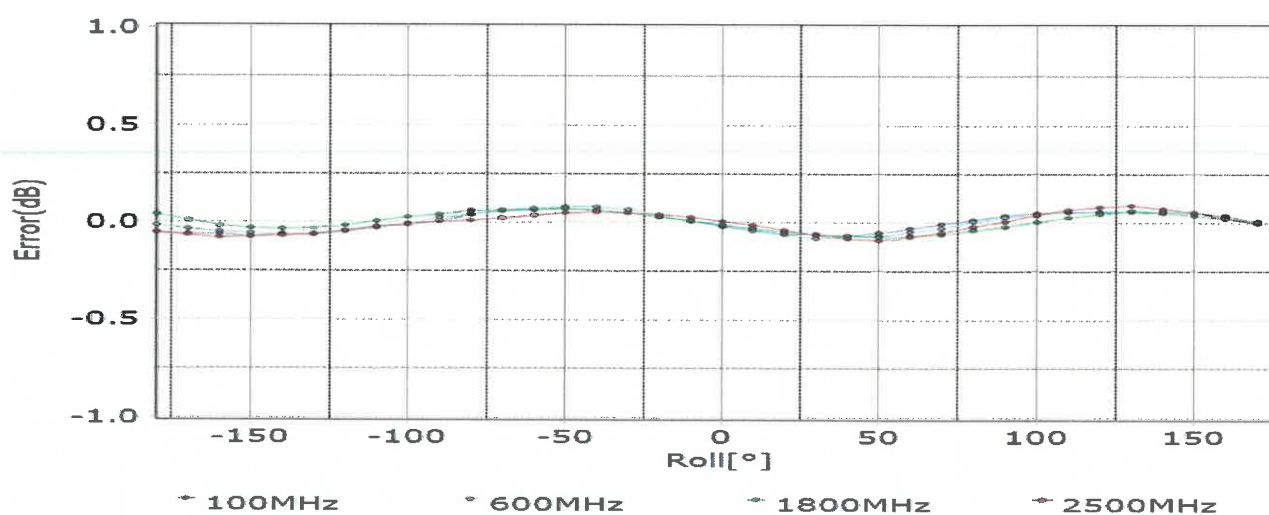
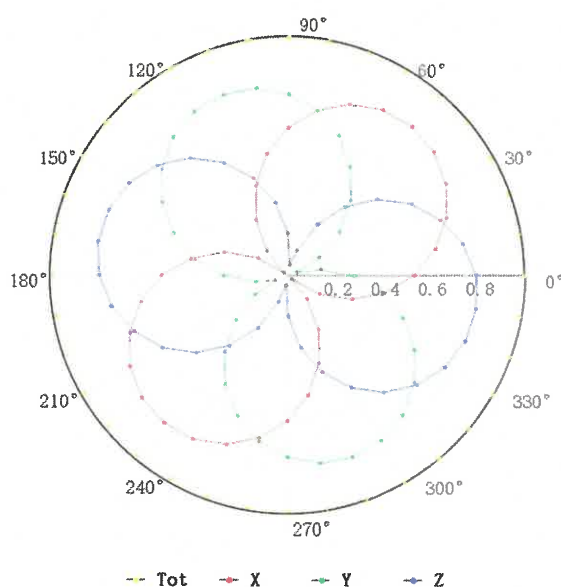
<http://www.caict.ac.cn>

Receiving Pattern (Φ), $\theta=0^\circ$

f=600 MHz, TEM



f=1800 MHz, R22



Uncertainty of Axial Isotropy Assessment: $\pm 1.2\%$ ($k=2$)

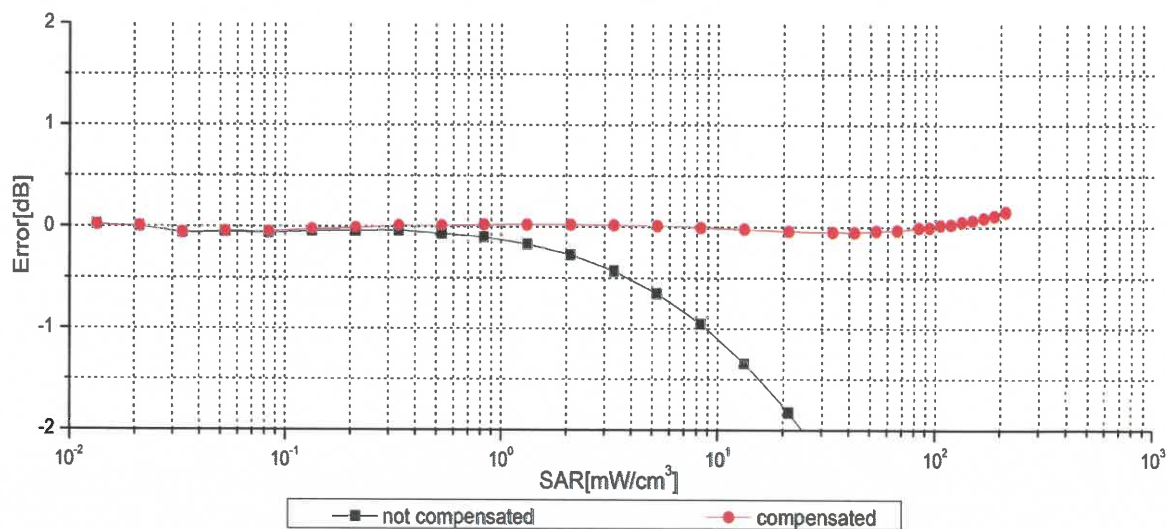
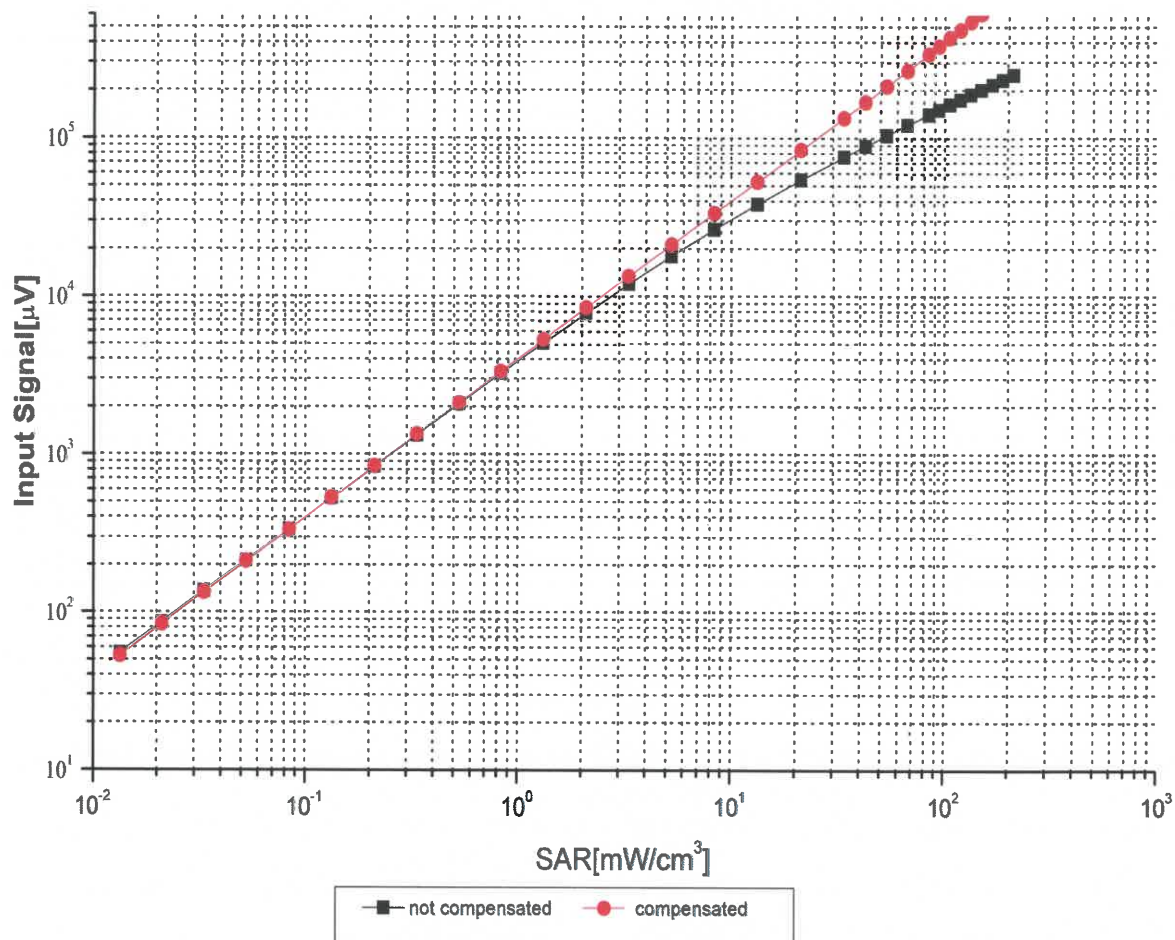
Add: No.52 HuaYuanBei Road, Haidian District, Beijing, 100191, China

Tel: +86-10-62304633-2117

E-mail: emf@caict.ac.cn

<http://www.caict.ac.cn>

Dynamic Range f(SAR_{head}) (TEM cell, f = 900 MHz)



Uncertainty of Linearity Assessment: $\pm 0.9\%$ ($k=2$)

Add: No.52 HuaYuanBei Road, Haidian District, Beijing, 100191, China

Tel: +86-10-62304633-2117

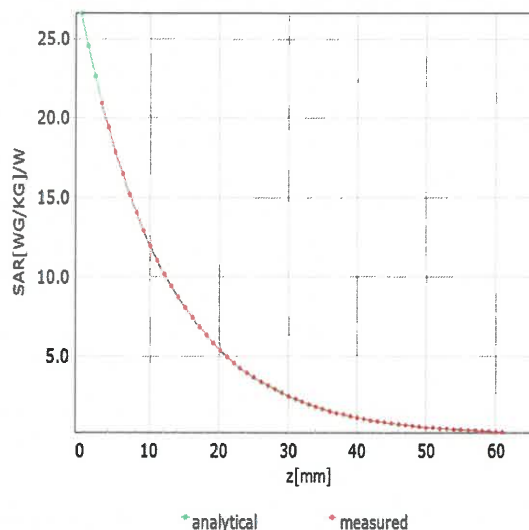
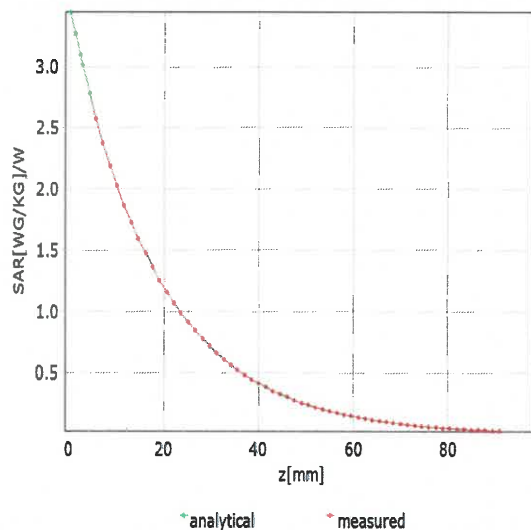
E-mail: emf@caict.ac.cn

<http://www.caict.ac.cn>

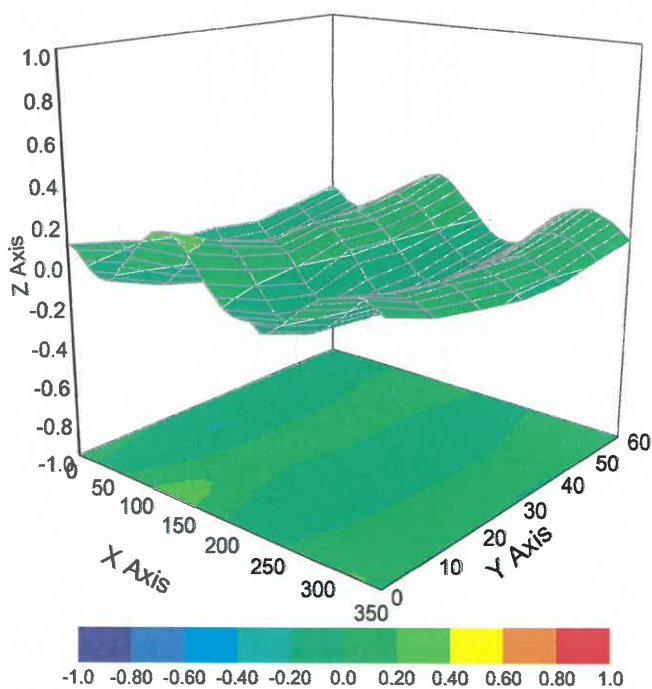
Conversion Factor Assessment

f=835 MHz,WGLS R9(H_convF)

f=1750 MHz,WGLS R22(H_convF)



Deviation from Isotropy in Liquid



Uncertainty of Spherical Isotropy Assessment: $\pm 3.2\%$ ($k=2$)

Add: No.52 HuaYuanBei Road, Haidian District, Beijing, 100191, China
Tel: +86-10-62304633-2117
E-mail: emf@caict.ac.cn <http://www.caict.ac.cn>

DASY/EASY – Parameters of Probe: EX3DV4 – SN:7328

Other Probe Parameters

Sensor Arrangement	Triangular
Connector Angle (°)	116.2
Mechanical Surface Detection Mode	enabled
Optical Surface Detection Mode	disable
Probe Overall Length	337mm
Probe Body Diameter	10mm
Tip Length	9mm
Tip Diameter	2.5mm
Probe Tip to Sensor X Calibration Point	1mm
Probe Tip to Sensor Y Calibration Point	1mm
Probe Tip to Sensor Z Calibration Point	1mm
Recommended Measurement Distance from Surface	1.4mm

Client : CTI

Certificate No: 24J02Z80025

CALIBRATION CERTIFICATE

Object DAE4 - SN: 1458

Calibration Procedure(s) FF-Z11-002-01
Calibration Procedure for the Data Acquisition Electronics (DAEx)




Calibration date: January 23, 2024

This calibration Certificate documents the traceability to national standards, which realize the physical units of measurements(SI). The measurements and the uncertainties with confidence probability are given on the following pages and are part of the certificate.

All calibrations have been conducted in the closed laboratory facility: environment temperature(22 ± 3)°C and humidity<70%.

Calibration Equipment used (M&TE critical for calibration)

Primary Standards	ID #	Cal Date(Calibrated by, Certificate No.)	Scheduled Calibration
Process Calibrator 753	1971018	12-Jun-23 (CTTL, No.J23X05436)	Jun-24

	Name	Function	Signature
Calibrated by:	Yu Zongying	SAR Test Engineer	
Reviewed by:	Lin Jun	SAR Test Engineer	
Approved by:	Qi Dianyuan	SAR Project Leader	

Issued: January 25, 2024

This calibration certificate shall not be reproduced except in full without written approval of the laboratory.



Add: No.52 HuaYuanBei Road, Haidian District, Beijing, 100191, China
Tel: +86-10-62304633-2117
E-mail: emf@caict.ac.cn <http://www.caict.ac.cn>

Glossary:

DAE data acquisition electronics
Connector angle information used in DASY system to align probe sensor X to the robot coordinate system.

Methods Applied and Interpretation of Parameters:

- *DC Voltage Measurement:* Calibration Factor assessed for use in DASY system by comparison with a calibrated instrument traceable to national standards. The figure given corresponds to the full scale range of the voltmeter in the respective range.
- *Connector angle:* The angle of the connector is assessed measuring the angle mechanically by a tool inserted. Uncertainty is not required.
- The report provide only calibration results for DAE, it does not contain other performance test results.



Add: No.52 HuaYuanBei Road, Haidian District, Beijing, 100191, China

Tel: +86-10-62304633-2117

E-mail: emf@caict.ac.cn

<http://www.caict.ac.cn>

DC Voltage Measurement

A/D - Converter Resolution nominal

High Range: 1LSB = 6.1 μ V, full range = -100...+300 mV

Low Range: 1LSB = 61nV, full range = -1.....+3mV

DASY measurement parameters: Auto Zero Time: 3 sec; Measuring time: 3 sec

Calibration Factors	X	Y	Z
High Range	404.449 \pm 0.15% (k=2)	404.417 \pm 0.15% (k=2)	404.670 \pm 0.15% (k=2)
Low Range	3.99152 \pm 0.7% (k=2)	3.95994 \pm 0.7% (k=2)	3.96139 \pm 0.7% (k=2)

Connector Angle

Connector Angle to be used in DASY system	333° \pm 1 °
---	----------------

Client

CTI

Certificate No: 24J02Z80030

CALIBRATION CERTIFICATE

Object D2450V2 - SN: 959

Calibration Procedure(s) FF-Z11-003-01
Calibration Procedures for dipole validation kits


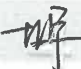

Calibration date: January 17, 2024

This calibration Certificate documents the traceability to national standards, which realize the physical units of measurements (SI). The measurements and the uncertainties with confidence probability are given on the following pages and are part of the certificate.

All calibrations have been conducted in the closed laboratory facility: environment temperature (22±3)°C and humidity<70%.

Calibration Equipment used (M&TE critical for calibration)

Primary Standards	ID #	Cal Date (Calibrated by, Certificate No.)	Scheduled Calibration
Power Meter NRP2	106276	15-May-23 (CTTL, No.J23X04183)	May-24
Power sensor NRP6A	101369	15-May-23 (CTTL, No.J23X04183)	May-24
ReferenceProbe EX3DV4	SN 3617	31-Mar-23(CTTL-SPEAG,No.Z23-60161)	Mar-24
DAE4	SN 1556	03-Jan-24(CTTL-SPEAG,No.24J02Z80002)	Jan-25
Secondary Standards	ID #	Cal Date (Calibrated by, Certificate No.)	Scheduled Calibration
Signal Generator E4438C	MY49071430	25-Dec-23 (CTTL, No. J23X13426)	Dec-24
NetworkAnalyzer E5071C	MY46110673	25-Dec-23 (CTTL, No. J23X13425)	Dec-24

	Name	Function	Signature
Calibrated by:	Zhao Jing	SAR Test Engineer	
Reviewed by:	Lin Jun	SAR Test Engineer	
Approved by:	Qi Dianyuan	SAR Project Leader	

Issued: January 26, 2024

This calibration certificate shall not be reproduced except in full without written approval of the laboratory.



Add: No.52 HuaYuanBei Road, Haidian District, Beijing, 100191, China
Tel: +86-10-62304633-2117
E-mail: cttl@chinattl.com <http://www.caict.ac.cn>

Glossary:

TSL	tissue simulating liquid
ConvF	sensitivity in TSL / NORM _{x,y,z}
N/A	not applicable or not measured

Calibration is Performed According to the Following Standards:

- a) IEC/IEEE 62209-1528, "Measurement Procedure for The Assessment of Specific Absorption Rate of Human Exposure to Radio Frequency Fields from Hand-held and Body-mounted Wireless Communication Devices- Part 1528: Human Models, Instrumentation and Procedures (Frequency range of 4 MHz to 10 GHz)", October 2020
- b) KDB 865664, "SAR Measurement Requirements for 100 MHz to 6 GHz"

Additional Documentation:

- c) DASY4/5 System Handbook

Methods Applied and Interpretation of Parameters:

- **Measurement Conditions:** Further details are available from the Validation Report at the end of the certificate. All figures stated in the certificate are valid at the frequency indicated.
- **Antenna Parameters with TSL:** The dipole is mounted with the spacer to position its feed point exactly below the center marking of the flat phantom section, with the arms oriented parallel to the body axis.
- **Feed Point Impedance and Return Loss:** These parameters are measured with the dipole positioned under the liquid filled phantom. The impedance stated is transformed from the measurement at the SMA connector to the feed point. The Return Loss ensures low reflected power. No uncertainty required.
- **Electrical Delay:** One-way delay between the SMA connector and the antenna feed point. No uncertainty required.
- **SAR measured:** SAR measured at the stated antenna input power.
- **SAR normalized:** SAR as measured, normalized to an input power of 1 W at the antenna connector.
- **SAR for nominal TSL parameters:** The measured TSL parameters are used to calculate the nominal SAR result.

The reported uncertainty of measurement is stated as the standard uncertainty of Measurement multiplied by the coverage factor $k=2$, which for a normal distribution Corresponds to a coverage probability of approximately 95%.

Add: No.52 HuaYuanBei Road, Haidian District, Beijing, 100191, China
Tel: +86-10-62304633-2117
E-mail: cttl@chinattl.com <http://www.caict.ac.cn>

Measurement Conditions

DASY system configuration, as far as not given on page 1.

DASY Version	DASY52	52.10.4
Extrapolation	Advanced Extrapolation	
Phantom	Triple Flat Phantom 5.1C	
Distance Dipole Center - TSL	10 mm	with Spacer
Zoom Scan Resolution	dx, dy, dz = 5 mm	
Frequency	2450 MHz \pm 1 MHz	

Head TSL parameters

The following parameters and calculations were applied.

	Temperature	Permittivity	Conductivity
Nominal Head TSL parameters	22.0 °C	39.2	1.80 mho/m
Measured Head TSL parameters	(22.0 \pm 0.2) °C	39.4 \pm 6 %	1.78 mho/m \pm 6 %
Head TSL temperature change during test	<1.0 °C	—	—

SAR result with Head TSL

SAR averaged over 1 cm³ (1 g) of Head TSL	Condition	
SAR measured	250 mW input power	13.3 W/kg
SAR for nominal Head TSL parameters	normalized to 1W	53.6 W/kg \pm 18.8 % (k=2)
SAR averaged over 10 cm³ (10 g) of Head TSL	Condition	
SAR measured	250 mW input power	6.14 W/kg
SAR for nominal Head TSL parameters	normalized to 1W	24.7 W/kg \pm 18.7 % (k=2)

Add: No.52 HuaYuanBei Road, Haidian District, Beijing, 100191, China
 Tel: +86-10-62304633-2117
 E-mail: cttl@chinattl.com <http://www.caict.ac.cn>

Appendix (Additional assessments outside the scope of CNAS L0570)

Antenna Parameters with Head TSL

Impedance, transformed to feed point	53.1Ω+ 3.25jΩ
Return Loss	- 27.2dB

General Antenna Parameters and Design

Electrical Delay (one direction)	1.065 ns
----------------------------------	----------

After long term use with 100W radiated power, only a slight warming of the dipole near the feed-point can be measured.

The dipole is made of standard semirigid coaxial cable. The center conductor of the feeding line is directly connected to the second arm of the dipole. The antenna is therefore short-circuited for DC-signals. On some of the dipoles, small end caps are added to the dipole arms in order to improve matching when loaded according to the position as explained in the "Measurement Conditions" paragraph. The SAR data are not affected by this change. The overall dipole length is still according to the Standard. No excessive force must be applied to the dipole arms, because they might bend or the soldered connections near the feed-point may be damaged.

Additional EUT Data

Manufactured by	SPEAG
-----------------	-------

Add: No.52 HuaYuanBei Road, Haidian District, Beijing, 100191, China
Tel: +86-10-62304633-2117
E-mail: cttl@chinattl.com <http://www.caict.ac.cn>

DASY5 Validation Report for Head TSL

Date: 2024-01-17

Test Laboratory: CTTL, Beijing, China

DUT: Dipole 2450 MHz; Type: D2450V2; Serial: D2450V2 - SN: 959

Communication System: UID 0, CW; Frequency: 2450 MHz

Medium parameters used: $f = 2450$ MHz; $\sigma = 1.775$ S/m; $\epsilon_r = 39.38$; $\rho = 1000$ kg/m³

Phantom section: Right Section

Measurement Standard: DASY5 (IEEE/IEC/ANSI C63.19-2007)

DASY5 Configuration:

- Probe: EX3DV4 - SN3617; ConvF(7.68, 7.68, 7.68) @ 2450 MHz; Calibrated: 2023-03-31
- Sensor-Surface: 1.4mm (Mechanical Surface Detection)
- Electronics: DAE4 Sn1556; Calibrated: 2024-01-03
- Phantom: MFP_V5.1C (20deg probe tilt); Type: QD 000 P51 Cx; Serial: 1062
- DASY52 52.10.4(1535); SEMCAD X 14.6.14(7501)

Dipole Calibration/Zoom Scan (7x7x7) (7x7x7)/Cube 0: Measurement grid: dx=5mm, dy=5mm, dz=5mm

Reference Value = 96.07 V/m; Power Drift = -0.07 dB

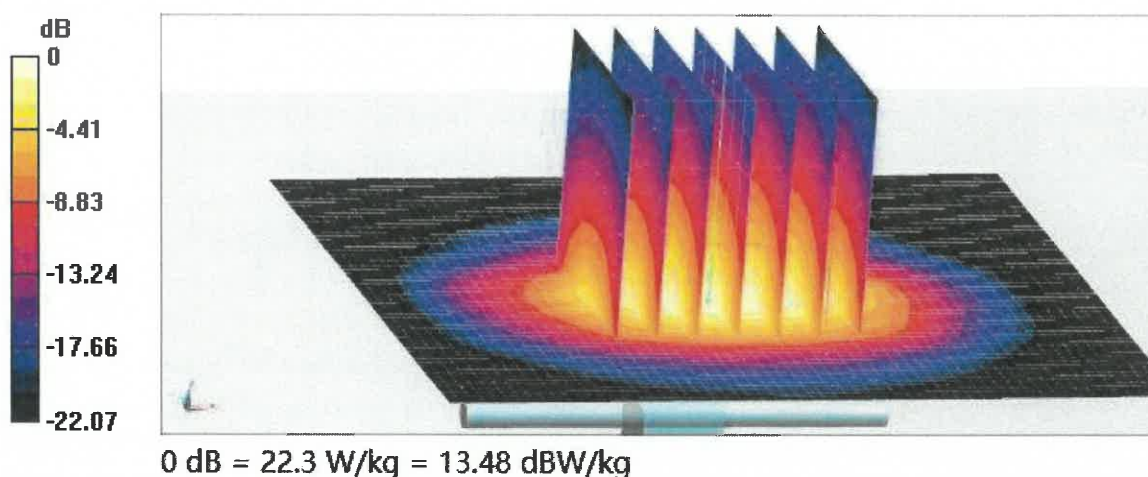
Peak SAR (extrapolated) = 27.7 W/kg

SAR(1 g) = 13.3 W/kg; SAR(10 g) = 6.14 W/kg

Smallest distance from peaks to all points 3 dB below = 8.9 mm

Ratio of SAR at M2 to SAR at M1 = 48.7%

Maximum value of SAR (measured) = 22.3 W/kg





Add: No.52 HuaYuanBei Road, Haidian District, Beijing, 100191, China
Tel: +86-10-62304633-2117
E-mail: cttl@chinattl.com <http://www.caict.ac.cn>

Impedance Measurement Plot for Head TSL

