

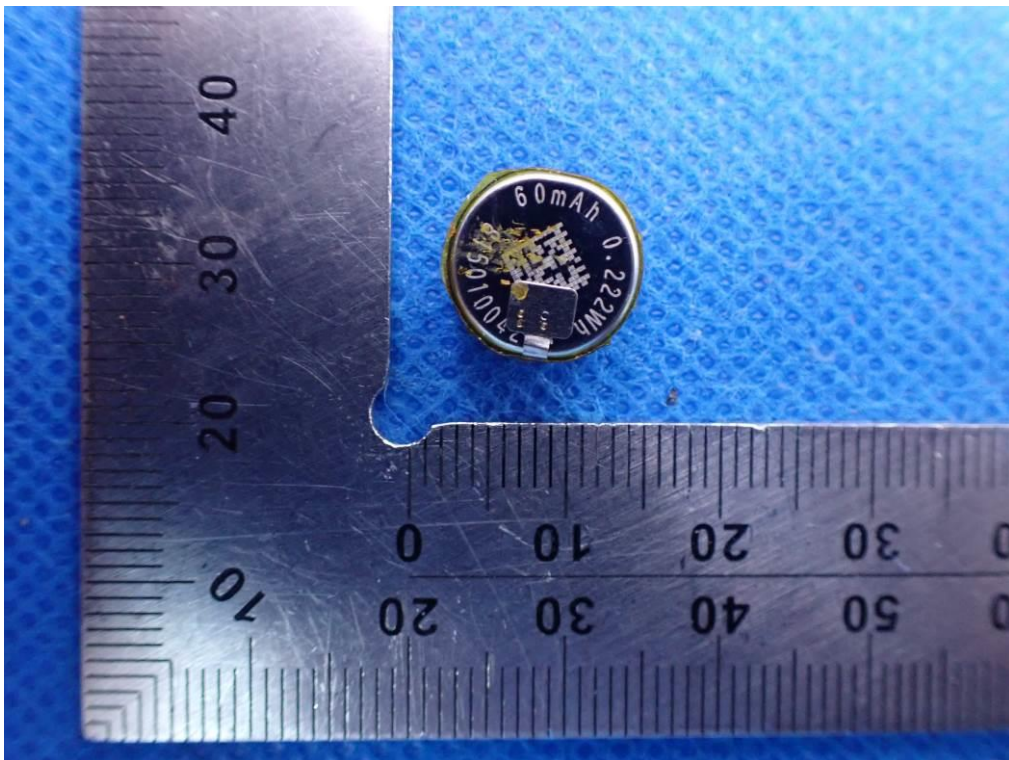
Internal Photos

Left

OPEN VIEW OF EUT

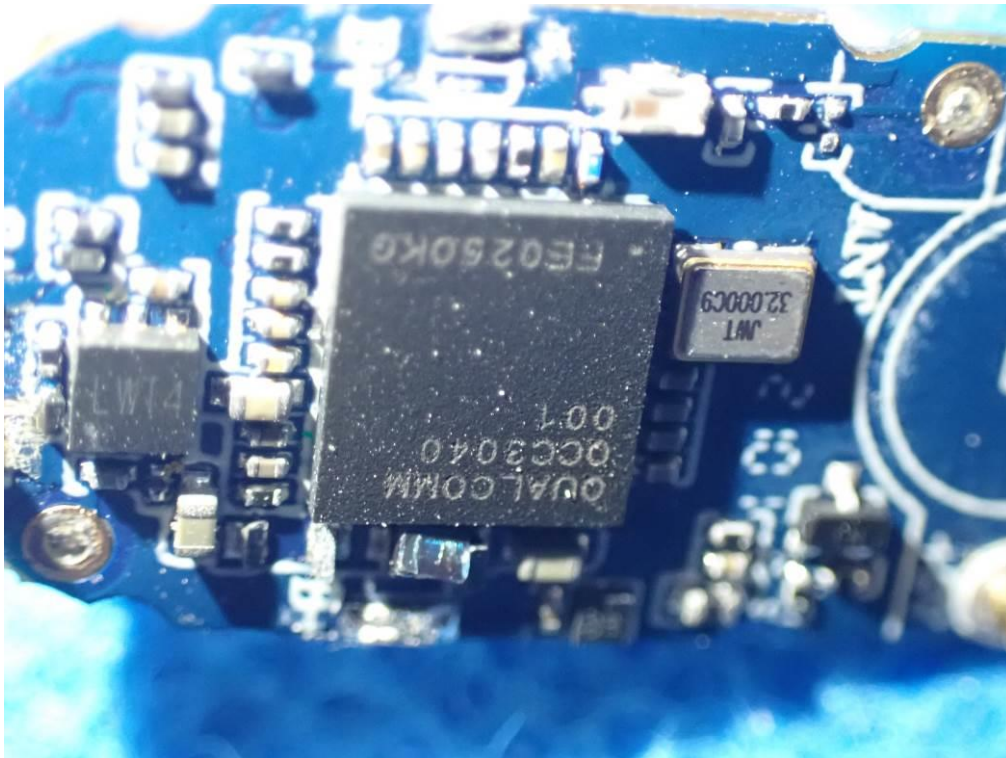


VIEW OF BATTERY

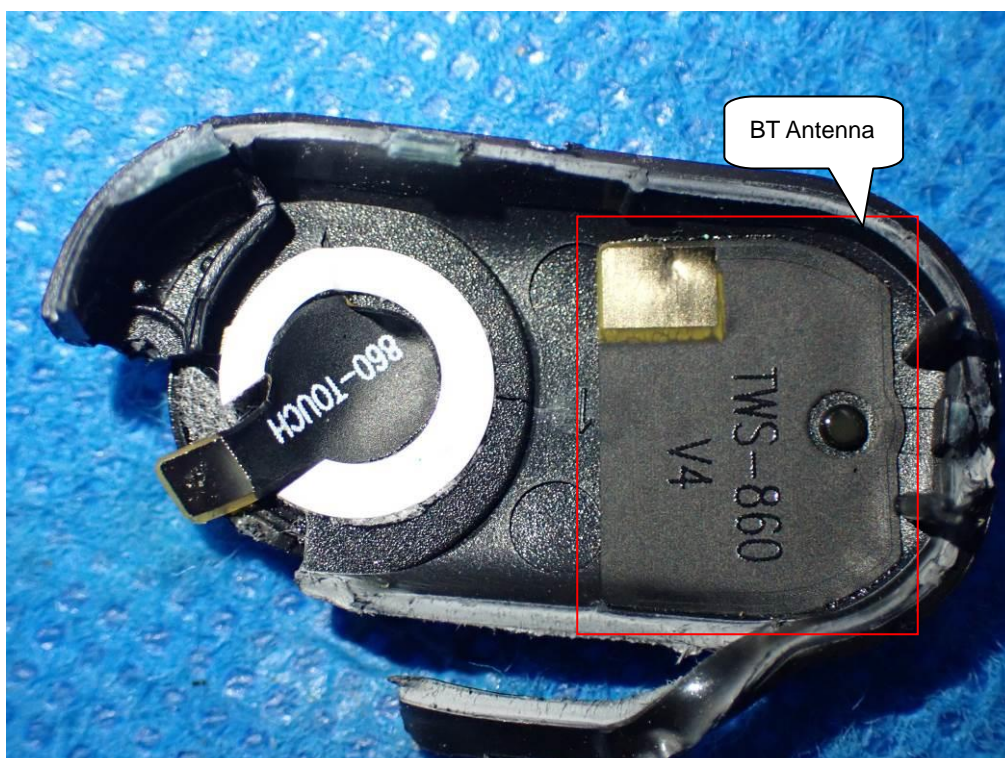


A small, oval-shaped blue electronic module is shown next to a ruler for scale. The module has a central black chip, several smaller components, and four gold-colored pins on one side. The ruler indicates the module is approximately 15 mm long and 10 mm wide.

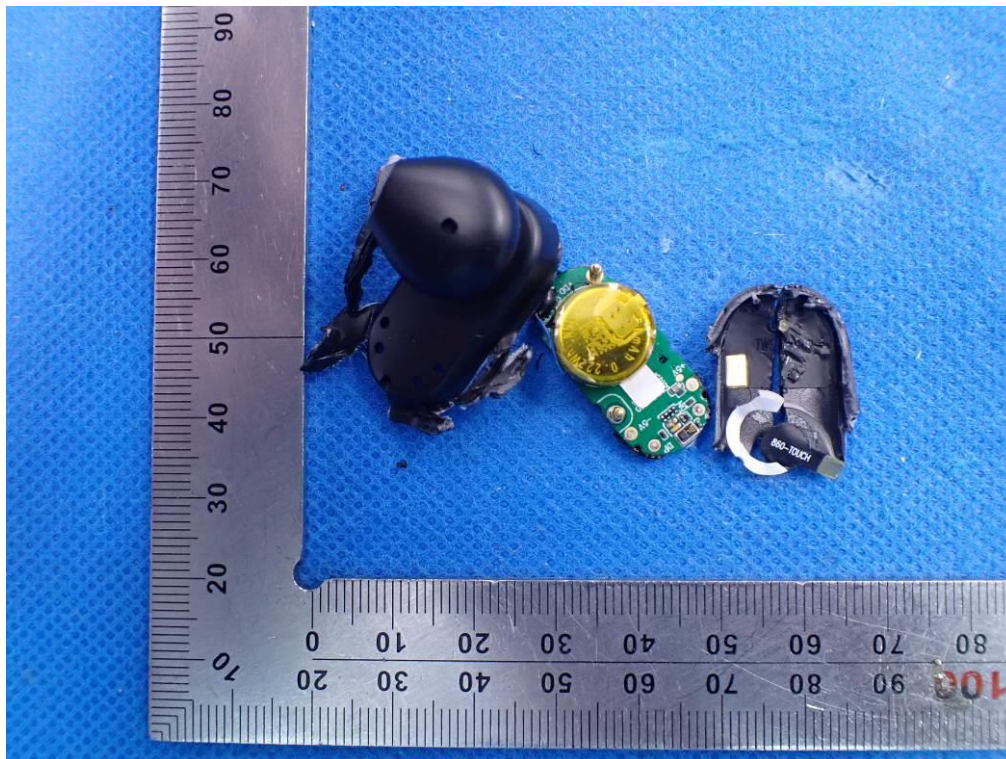
INTERNAL VIEW OF EUT-3



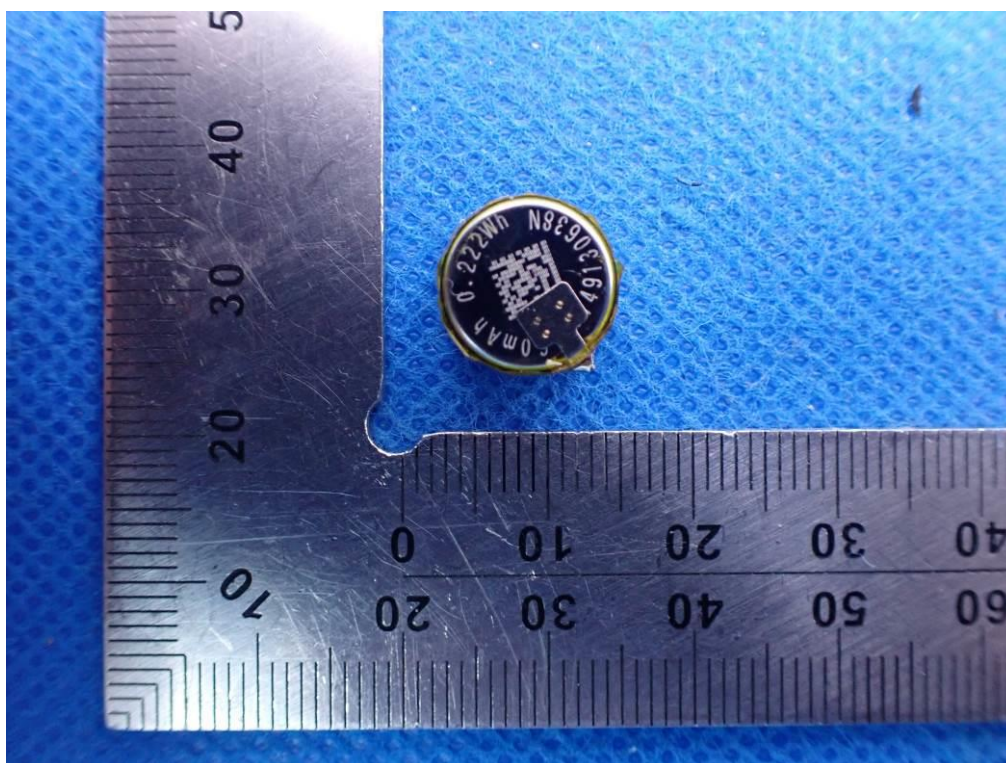
INTERNAL VIEW OF EUT-4



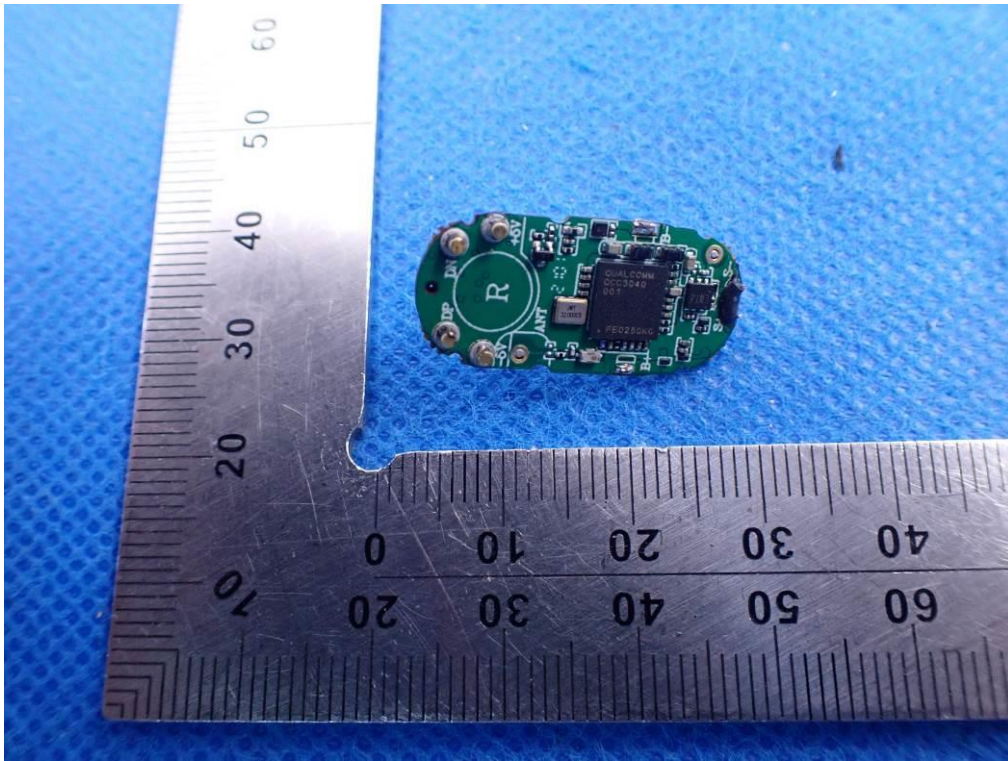
Right
OPEN VIEW OF EUT



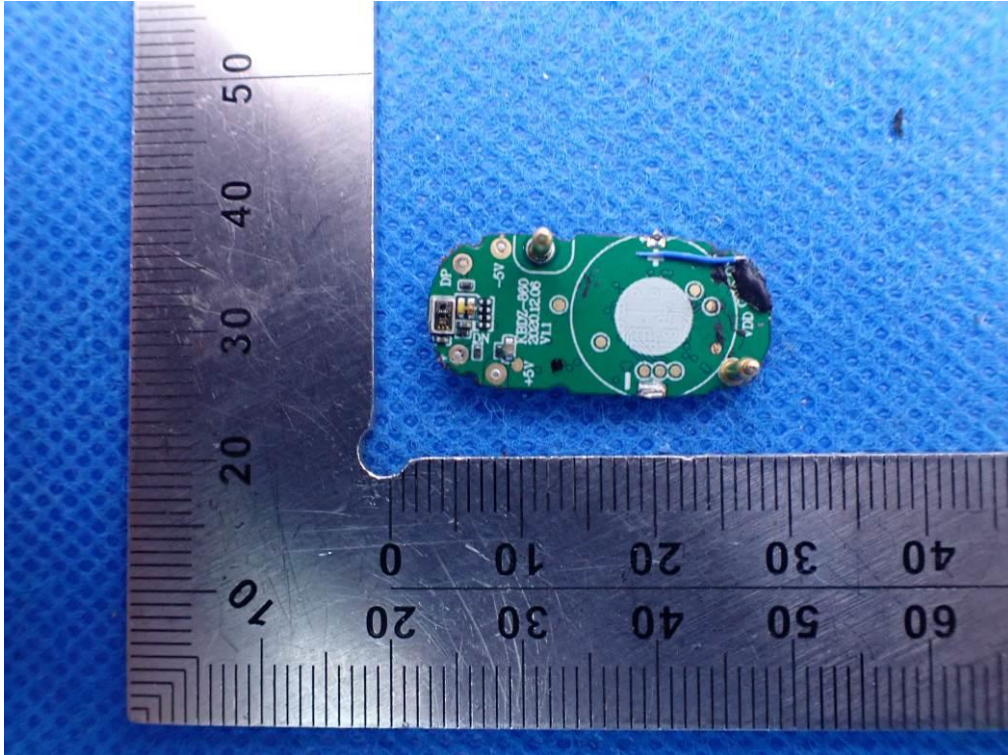
VIEW OF BATTERY



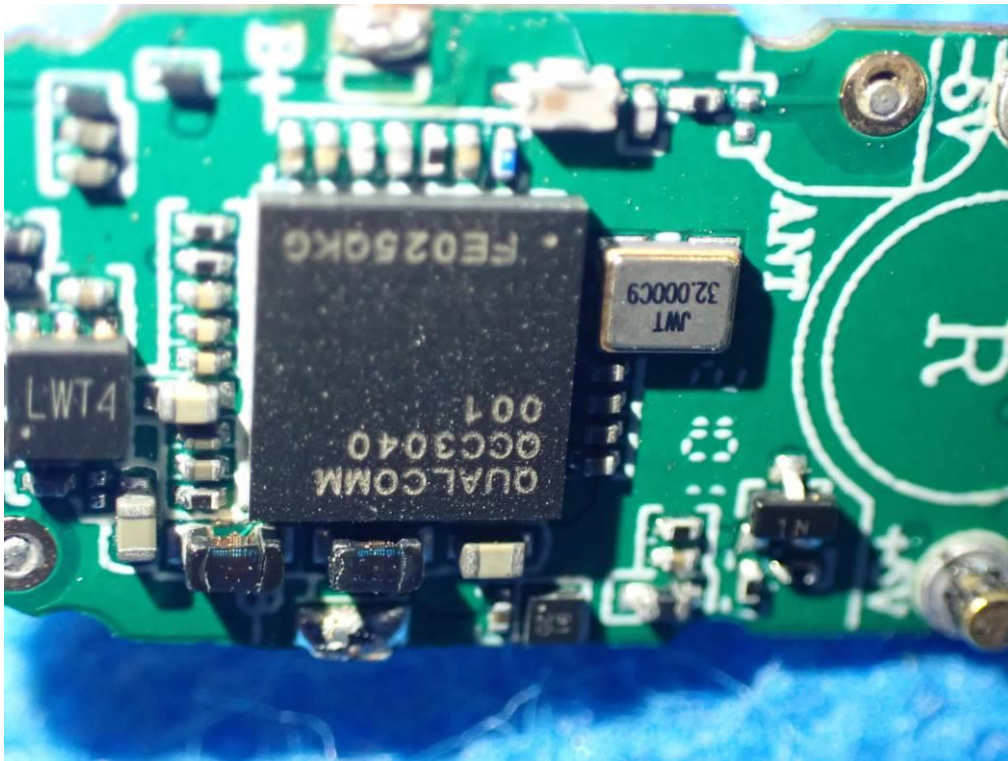
INTERNAL VIEW OF EUT-1



INTERNAL VIEW OF EUT-2



INTERNAL VIEW OF EUT-3



INTERNAL VIEW OF EUT-4

