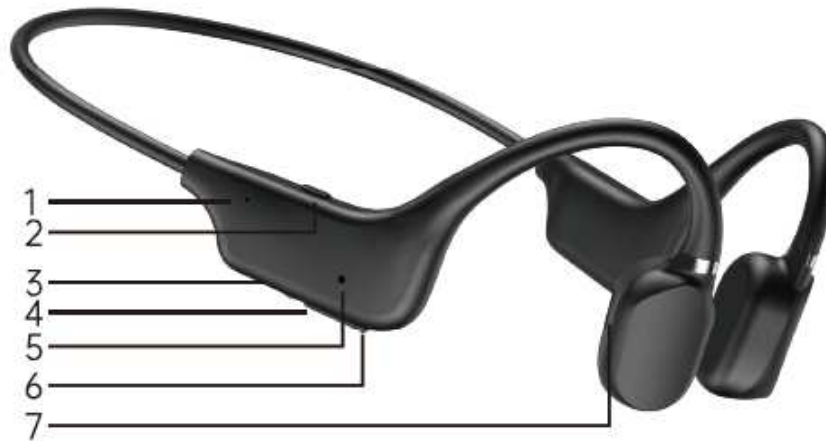




A5S Pro

使用指南
Operating guide

Introduction to Parts



1. Indicator: Work indicator hole
2. Multifunction key: Startup & Shutdown key or multifunctional combination key
3. Charging interface: Mirco 5pin charging interface
4. Volume down: Turn down volume or switch to former song
5. Call hole: Microphone call hole
6. Volume up: Turn up volume or switch to next song
7. Horn hole: Horn sound hole

LED state

- Startup: Blue light is on;
- Shutdown: Red light is always on;
- Charge completed: Blue light is always on;
- Charging: Red light is always on;
- Low-voltage alarm: The red light flashes once in one second;
- Standby (connect phone): The blue light flashes once every ten seconds;

- When playing music: The blue light flashes once every five seconds;

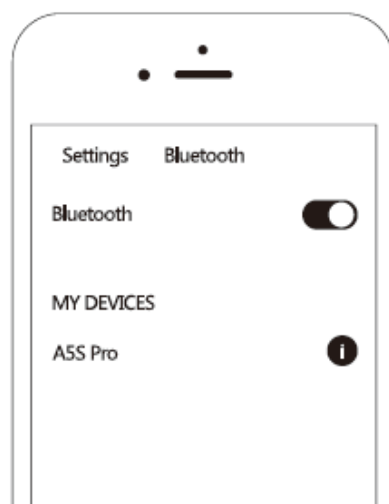
Charging

Headphones are charged by Mirco 5pin charging line. After charging, LED indicator changes from red (always on) to blue (always on).

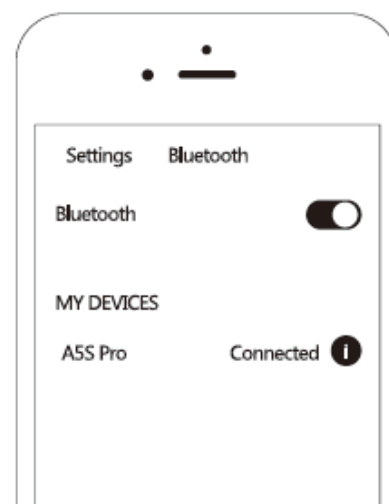
Bluetooth pairing

- First startup pairing:

In a shutdown state, long press the multifunction key for 3 seconds. The headphone blue light is always on for 3 seconds and the red/ blue lights flash alternately. At this time, the headphones enter the automatic Bluetooth pairing mode and the headphone voice prompts "beep". Turn on smart devices such as mobile phones, find "A5S Pro" from the Bluetooth list, and click on the connection; After confirming the connection, the headphone prompts "beep".



Search for headphones



Connection succeeded

Button operations

- Headphones on:

In a shutdown state, long press the multifunction key for 3 seconds. The blue light is always on for 3 seconds and the red/ blue lights flash alternately with "beep".

- Headphones off:

In a shutdown state, long press the multifunction key for 4 seconds. The red light is always on with "beep".

- Answer calls:

When the first call, short press the multifunction key to complete the answer;

- Hang up calls:

When calling, short press the multifunction key to complete hang up;

- Reject calls:

When the first call, long press the multifunction key to complete the rejection;

- Disconnection:

The headphone is disconnected from the phone with "beep" sound.

●Playing music:

When standby, press the multifunction key or operate the player on the mobile phone; Blue light flashes once in 5 seconds

●Music play pause:

When playing music, short press multifunction key to pause music; Blue light flashes once in 10 seconds

●Volume up or next song:

Short press "volume up" to turn up volume; long press "volume up" to switch to next song;

●Volume down or former song:

Short press "volume down" to turn down volume; long press "volume down" to switch to former song;

Precautions:

- Low battery voltage: The red light flashes with a sound.
- If it is not connected to any mobile phone after startup, it will be shut down automatically in 5 minutes.
- Please charge this product for the first use.
- Do not remove or repair this product for any reason, otherwise it may cause fire, electronic breakdown or even complete damage to the product.
- Do not soak the product in liquid.
- If the charge is finished, please disconnect the charger from the equipment and unplug the charger. The continuous charging time should not exceed 12 hours.

Precautions:

- Please don't throw old batteries into old domestic waste. If the battery is improperly disposed of, it may cause the battery to fire or explode. Please comply with local regulations to dispose of this product, batteries and other accessories.
- The battery is forbidden to be disassembled, impacted, squeezed or put into the fire. In case of continuous bulging, please do not continue to use.
- Do not repair this product on your own.

Basic parameters

- Weight: Bare machine 18g
- Headphone Type: Portable Bluetooth headphone
- Bluetooth version: V 5.0
- Transmission distance: over 10 meters
- Frequency: 20Hz ~20KHz
- Battery capacity: 120maH
- Play duration: 8 hours or so
- Charging time: 1.5 hours (First charge is preferably more than 3 hours)
- Storage temperature: -30°C~ 80°C
- Working temperature: -20°C~ 70°C

FCC Statement

This device complies with part 15 of the FCC Rules. Operation is subject to the following two conditions: (1) This device may not cause harmful interference, and

(2) This device must accept any interference received, including interference that may cause undesired operation.

Any Changes or modifications not expressly approved by the party responsible for compliance could void the user's authority to operate the equipment.

Note: This equipment has been tested and found to comply with the limits for a Class B digital device, pursuant to part 15 of the FCC Rules. These limits are designed to provide reasonable protection against harmful interference in a residential installation. This equipment generates uses and can radiate radio frequency energy and, if not installed and used in accordance with the instructions, may cause harmful interference to radio communications. However, there is no guarantee that interference will not occur in a particular installation. If this equipment does cause harmful interference to radio or television reception, which can be determined by turning the equipment off and on, the user is encouraged to try to correct the interference by one or more of the following measures:

- ▶ -Reorient or relocate the receiving antenna.
- ▶ -Increase the separation between the equipment and receiver.
- ▶ -Connect the equipment into an outlet on a circuit different from that to which the receiver is connected.
- ▶ -Consult the dealer or an experienced radio/TV technician for help.