

salto **A**

## **10.1 inch outdoor display operation instructions**



Model: ASL-101DCTPC-PCAP-V3.1

# Content

02	Content
03	Safety precautions
03	Instructions for use
03	Precautions for installing the display
04	Cleaning and Maintenance
06	Flushing Mount Installation
06	Option A: When on plaster wall
07	Option B: When on concrete wall
08	Surface Mount Installation
08	Option A: When on plaster wall
09	Option B: When on concrete wall
10	Packaging accessories
10	Screen interface description
11	Basic operation instructions
11	1. Product Configuration
12	2. Common fault analysis

# Safety precautions

## Instructions for use

1. Please read this manual in detail before using this product and keep it in a safe place for future reference.
2. The product specifications and other information in this manual are for reference only.
3. They are subject to change without notice.
4. Please do not remove any stickers on this product as this may affect the judgment of warranty time.
5. To extend the life of the screen, it is recommended to use a low brightness setting.
6. Due to the life of the LCD screen backlight, the brightness quality of the LCD screen will decrease with the use time.
7. Try to avoid displaying still or static images for a long time. Displaying still or static images for a long time may cause burn-in on the LCD screen. This is a known phenomenon in LCD screen technology. Minor burn-in will disappear over time after power failure.
8. Warning: Severe burn-in will not recover or be repaired after power failure. This phenomenon is not covered by the warranty.

## Precautions for installing the display

1. Do not block the ventilation holes or speaker pronunciation holes on the casing of this product. Do not place this product near a radiator, heat source or any other equipment that may affect normal ventilation.
2. Do not dismantle or repair this product on your own to avoid high-voltage electric shock or other dangers. In case of a malfunction, you should ask a professional repairer to do all the work.
3. Before using this product, make sure that all cables are properly connected and the power cord is not damaged, if there is any damage, please contact your dealer immediately.
4. This product should only be used with the type of power supply indicated on the label and a matching power plug. If you do not know the type of power supply, please contact your dealer or local power company.
5. In the event of a thunderstorm or when not in use for an extended period of time, unplug the power cord from the unit. Doing so will prevent damage to the product due to sudden voltage changes.

# Safety precautions

## Cleaning and Maintenance

1. When cleaning the screen, please gently wipe it with a clean, soft cloth without threads, and do not use sprays directly on the screen.
2. If any foreign matter or liquid gets into the product, please turn off the power immediately, unplug the power cord, and then remove the foreign matter or liquid
3. before sending the product back to the repair center.
4. To avoid this product receiving possible damage, do not hit the panel with hard objects. When handling the monitor, please hold it gently and avoid putting your fingers on the LCD panel.
5. To keep the display in optimal working condition and to prolong its service life, we strongly recommend using the display in a temperature and humidity environment that does not exceed the following.

Temperature: -10°C-50°C

Humidity: 20%-80% (non-condensing)

# Safety precautions

## FCC Caution:

This device complies with part 15 of the FCC Rules.

Operation is subject to the following two conditions: (1) this device may not cause harmful interference, and (2) this device must accept any interference received, including interference that may cause undesired operation..

Any changes or modifications not expressly approved by the party responsible for compliance could void the user's authority to operate the equipment.

## NOTE:

This equipment has been tested and found to comply with the limits for a Class B digital device, pursuant to Part 15 of the FCC Rules. These limits are designed to provide reasonable protection against harmful interference in a residential installation. This equipment generates, uses and can radiate radio frequency energy and, if not installed and used in accordance with the instructions, may cause harmful interference to radio communications. However, there is no guarantee that interference will not occur in a particular installation.

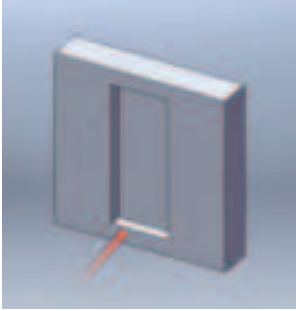
If this equipment does cause harmful interference to radio or television reception, which can be determined by turning the equipment off and on, the user is encouraged to try to correct the interference by one or more of the following measures:

- Reorient or relocate the receiving antenna.
- Increase the separation between the equipment and receiver.
- Connect the equipment into an outlet on a circuit different from that to which the receiver is connected.
- Consult the dealer or an experienced radio / TV technician for help.

To maintain compliance with FCC's RF Exposure guidelines, This equipment should be installed and operated with minimum distance between 20 cm the radiator your body: Use only the supplied antenna.

# Flushing Mount Installation

## Option A: When on plaster wall



a. Make a square hole of 408.5\*167\*38 mm high and 167\*38 mm deep on the wall;



b. Embed the fixing box into it and fix the box by M4 expansion screws, fill the gap around the box;



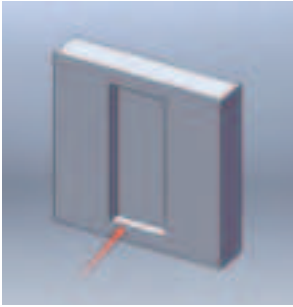
c. Plug the cord in, slide the screen into the box along the top and pull down to try the slide into the slot;



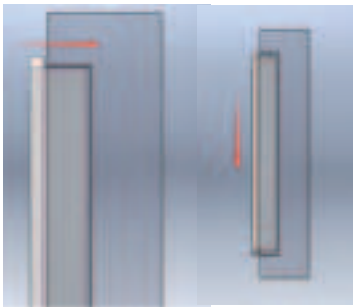
d. Lock the bottom anti-theft screws to complete the installation.

# Flushing Mount Installation

## Option B: When on concrete wall



- Choose the location, the internal space of the wall meets Height 408.5\*Width 167\*Depth 38 mm.
- Make holes in the wall and install the fixing plank inside the wall and make sure that the internal space is enough Height 408.5\*Width 167\*Depth 38 mm;
- Install the fixing box on the wooden board and use M4 countersunk head self-tapping screws to fix it.



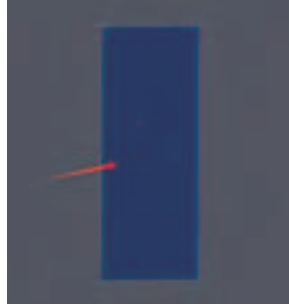
- Fill in the gaps around the fixing box;
- Plug the cable in, slide the screen into the box along the top, and then pull down to try to slide the screen into the slot;
- Lock the bottom anti-theft screws to complete the installation.

# Surface Mount Installation

## Option A: When on plaster wall



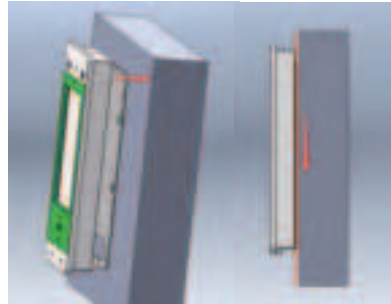
(1) First, make a slot in the wall for the power cord, access control cable, network cable and USB cable.



(2) Use a template that is slightly smaller than the wall panel and embed it into the plaster wall. Note! The board cannot be lower than the plaster wall.



(3) Attach the wall mount to the board.



(4) Plug in the cable, align the square hole on the back of the screen with the wall-mount buckle, and then pull the screen down to slide it into the slot.

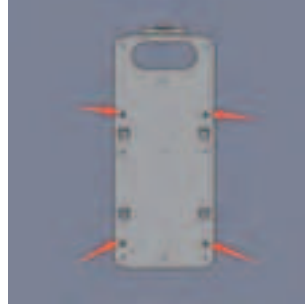


(5) Tighten the bottom anti-theft screws to complete the installation.

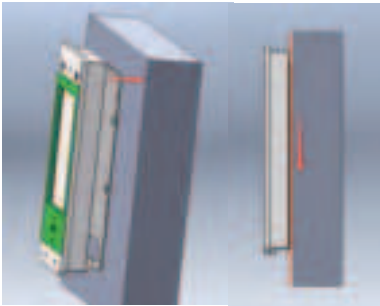


# Surface Mount Installation

## Option B: When on concrete wall



- (1) First, make a slot in the wall for the power cord, access control cable, network cable and USB cable;
- (2) Attach the wall mount to the board;



- (3) Plug in the cable, align the square hole on the back of the screen with the wall-mount buckle, and then pull the screen down to slide it into the slot;
- (4) Tighten the bottom anti-theft screws to complete the installation;

# Product description

## Packaging accessories



European power cord

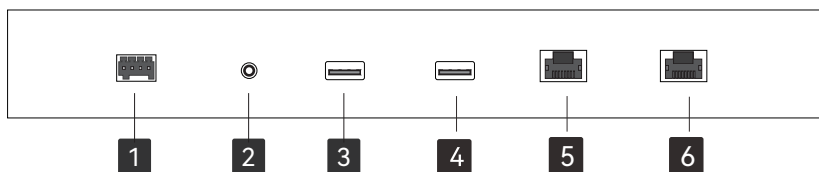


Power adapter



M4 expansion screws

## Screen interface description



1. Power and access control port: this port is the DC 12V input and access control switch port;
2. Headphone Port: this port is an audio output port;
- 3&4. USB port: this port is the USB port;
5. RFID port: this port is the RFID signal port;
6. ETH port: this port is a network cable connection port, which can be used to connect to Intel network after connecting the cable;

# Basic operation instructions

## 1. Product Configuration

	ITEM	SPECIFICATION
Panel	Panel Model	ASL-1010DCTPC-PCAP-V3.1
	Max Resolution	1280x800
	Aspect Ratio	16:10
	Pixel Pitch	0.1695x0.1695
	Viewing Angle	85/85/85/85
	Contrast Ratio	900:1
	Brightness	1200 cd/m <sup>2</sup>
	Response Time	30ms
	Display Area	216.96x135.6mm
Specifications	CPU	Intel Core I3-8145U
	Memory	8G
	Storage	128G
	Ethernet	1000M
Power supply	Input	DC 12V
	Max Power Consumption	35W
Functions	Playback mode	Yes
	Touch support	Yes
I/O interfaces	Power	DC 12 V
	Earphone	1
	USB2.0	2
	RFID point	1
	Ethernet	1
Structure	Net weight	5.5 kg
	Unit dimensions	106.5x42x60 .5 CM
	Package dimensions	117x47.5x70.5 CM
	Shell material	Metal
	Shell color	Black
Language	OSD	English
Environment	Operating temperature	-10°C-50°C
	Working humidity	-5% ~ 80% (No condensation)
	Storage temperature	-20 ~ 65°C
	Storage humidity	-5% ~ 90% (No condensation)

# Basic operation instructions

## 2. Common fault analysis

Common Failures	Possible solutions
LCD screen not bright	1. Check if the power cord is plugged in properly?
	2. Replace the power adapter?
	3. Restart the screen and check if there is a boot screen? If so, try
	reinstalling the system.
The display screen is beyond the screen size	Enter the operating system and check whether the screen
	resolution is 1280*800?
Touch no effect	Restart the system and check if touch is restored?
Network cable cannot access the Internet	1. Unplug the network cable and check if the pins of the network
	port are deformed?
	2. Reconfigure the IP and check if there are any settings problems
	such as IP address conflicts or gateway errors?
Unable to record	1. Speak louder or speak closer to the MIC hole;
	2. Check whether the MIC hole is blocked;
Headphones are silent	1. Check whether the headphone plug is fully inserted and that no
	metal contacts are exposed;
	2. Replace the headphone and retest.
The screen suddenly turns blue or freezes	1. Replace the memory stick and retest;
	2. Check if the CPU thermal grease has dried up, affecting CPU
	heat dissipation and causing CPU overheating protection.