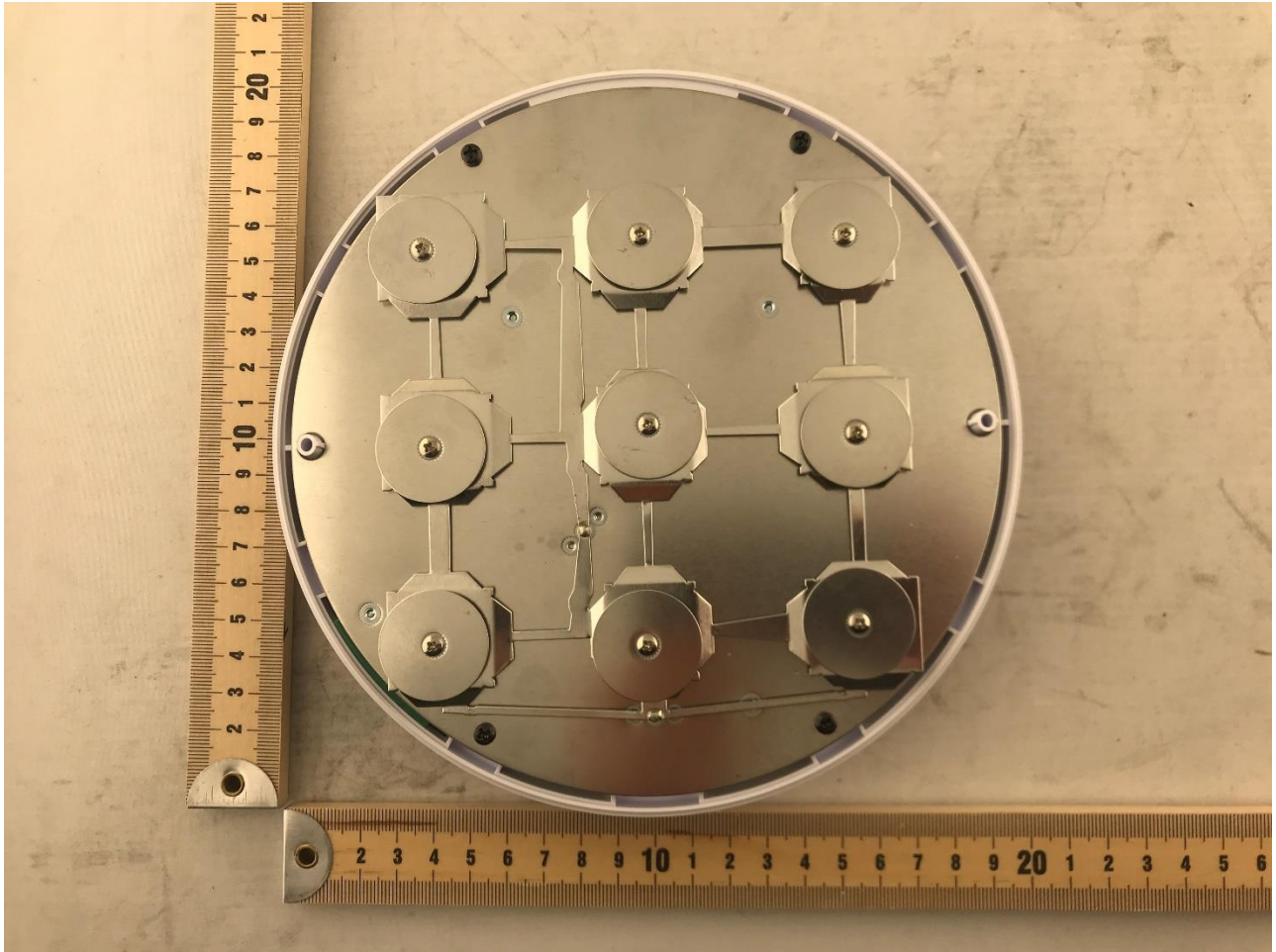
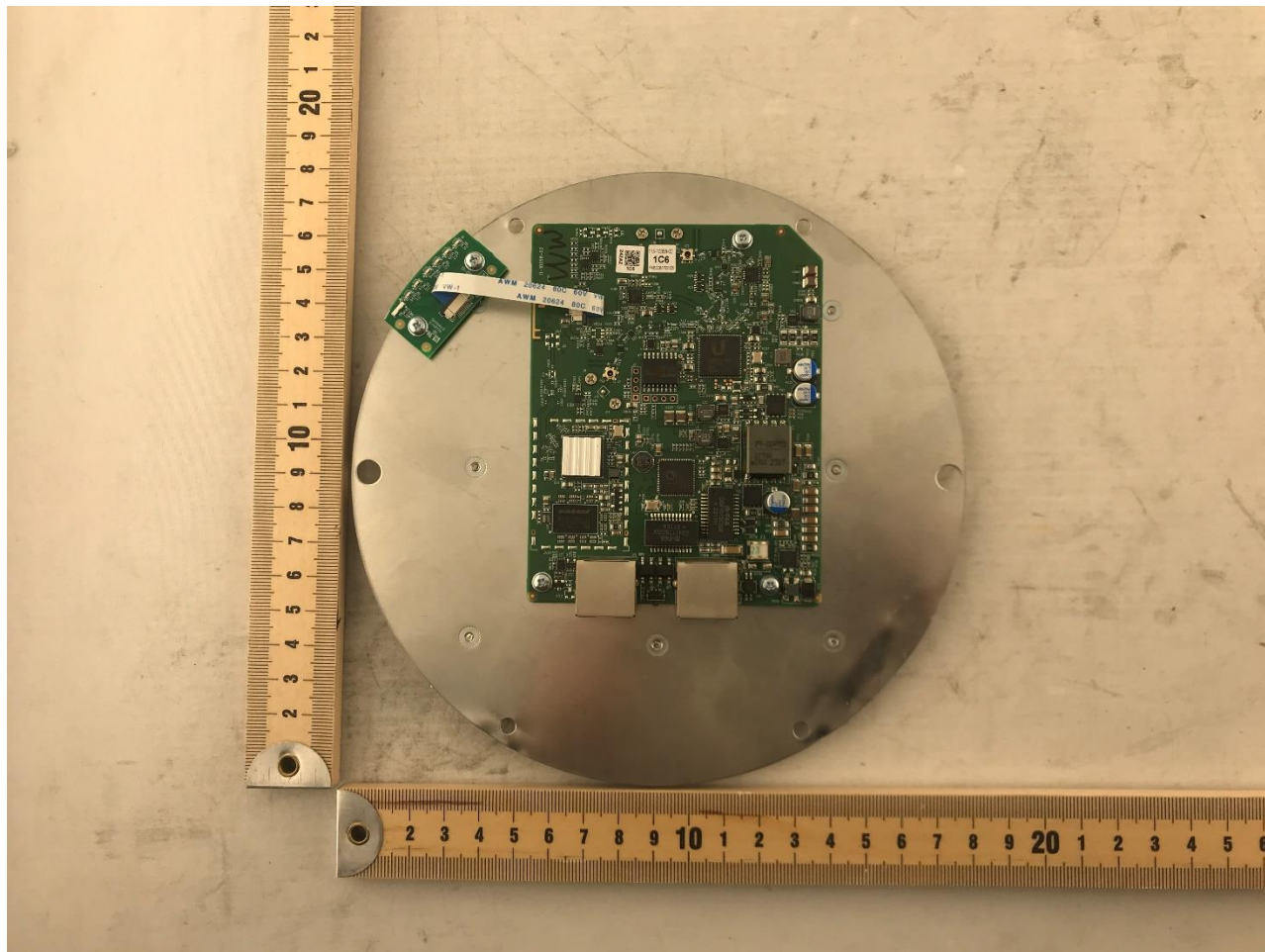


**Photograph 1: Front Cover Removed View of DUT**

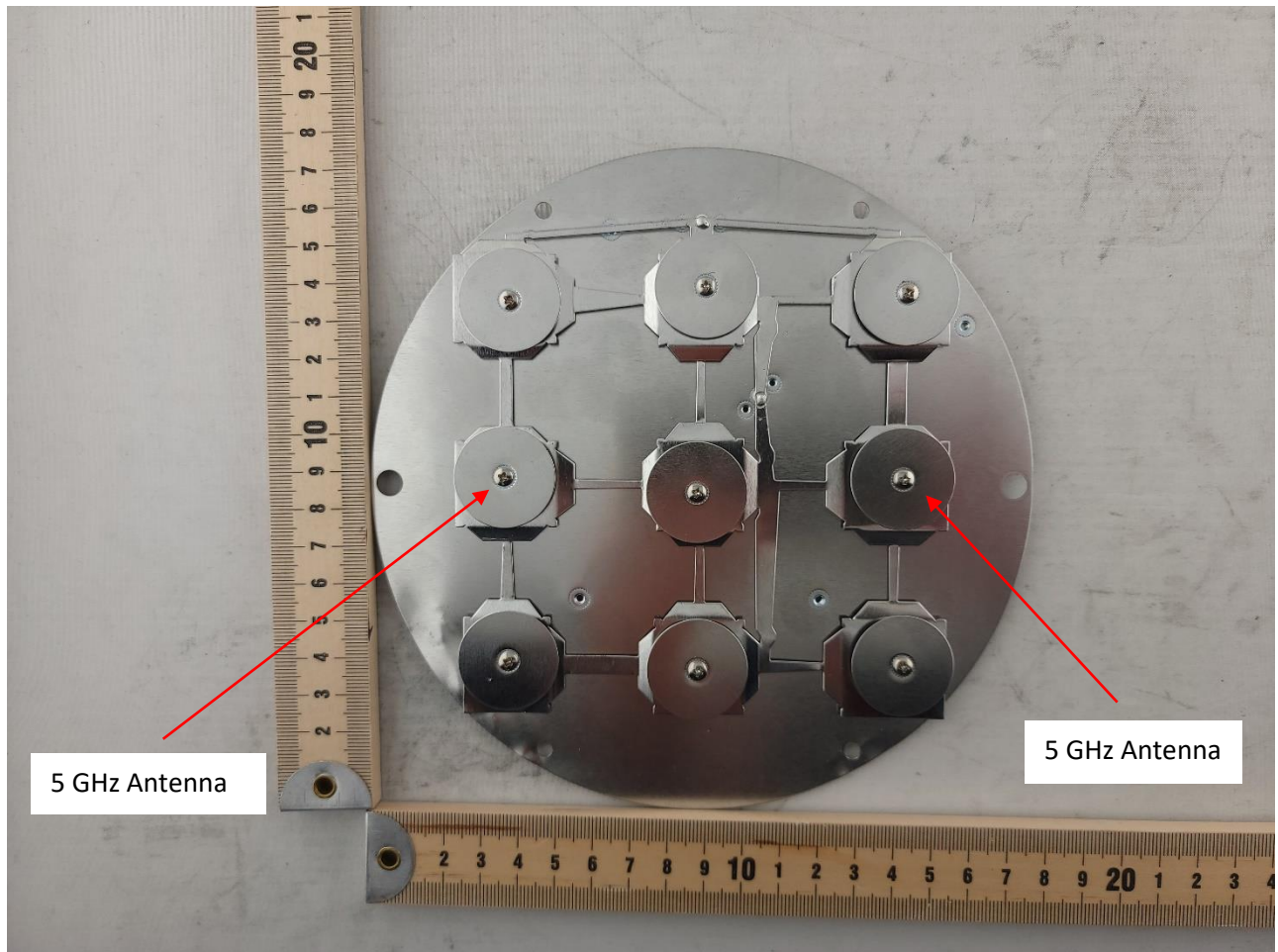


**Photograph 2: Antenna Board in Back Plastic View of DUT**

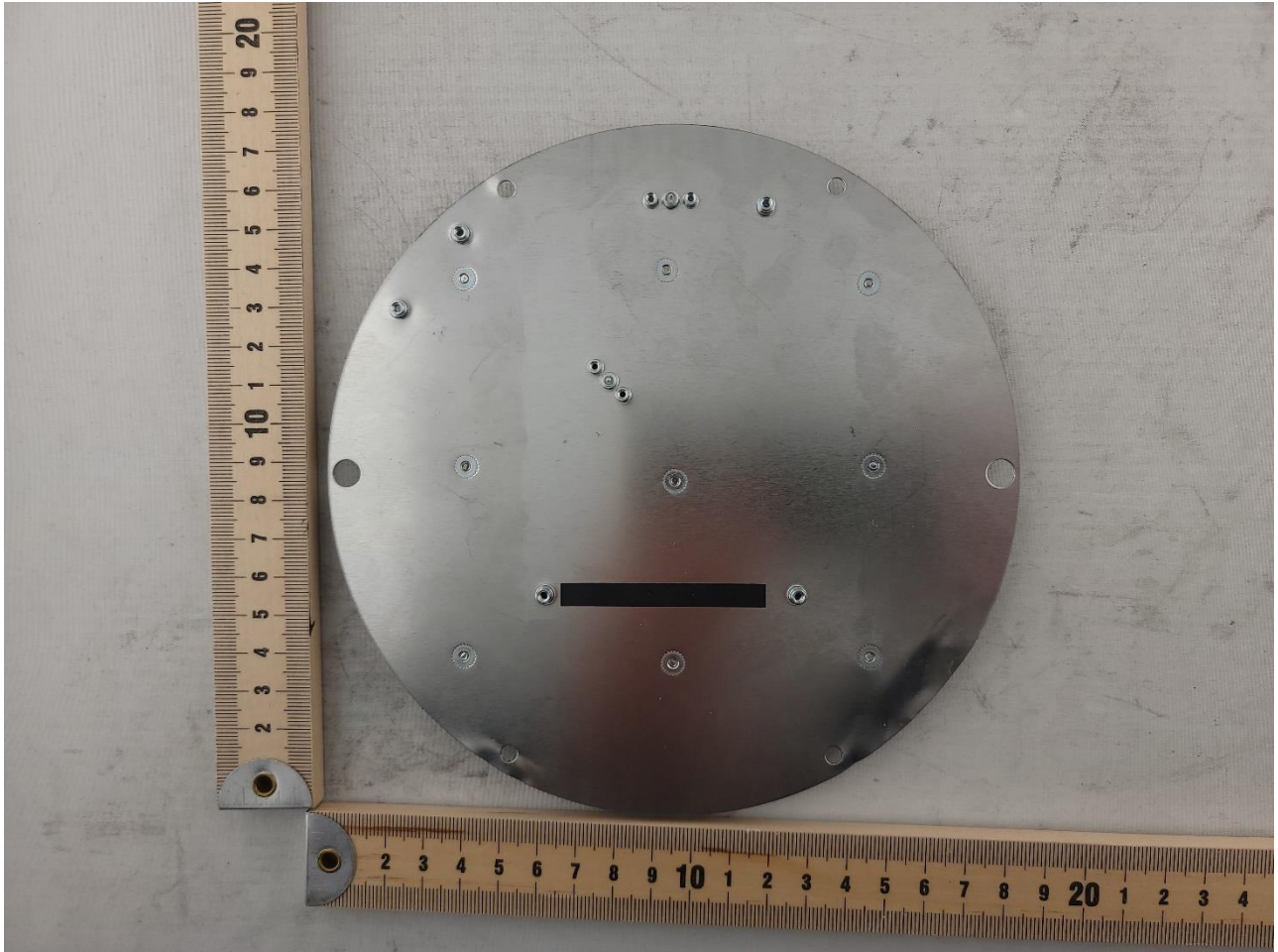


**Photograph 3: PCB on Back of Metal Antenna Board View of DUT**





**Photograph 4: Antenna Board Front (nine antennas)**

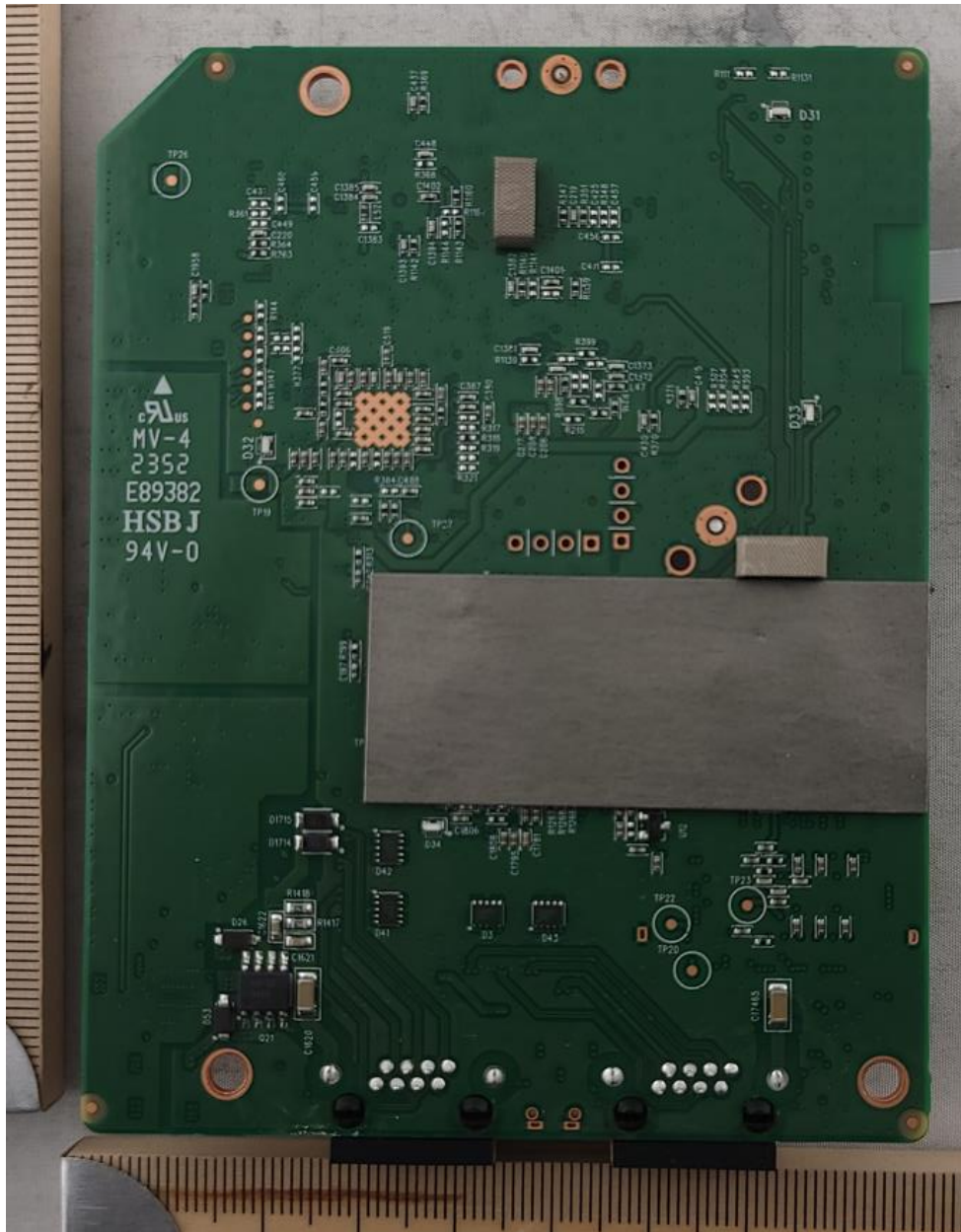


**Photograph 5: Antenna Board Back**

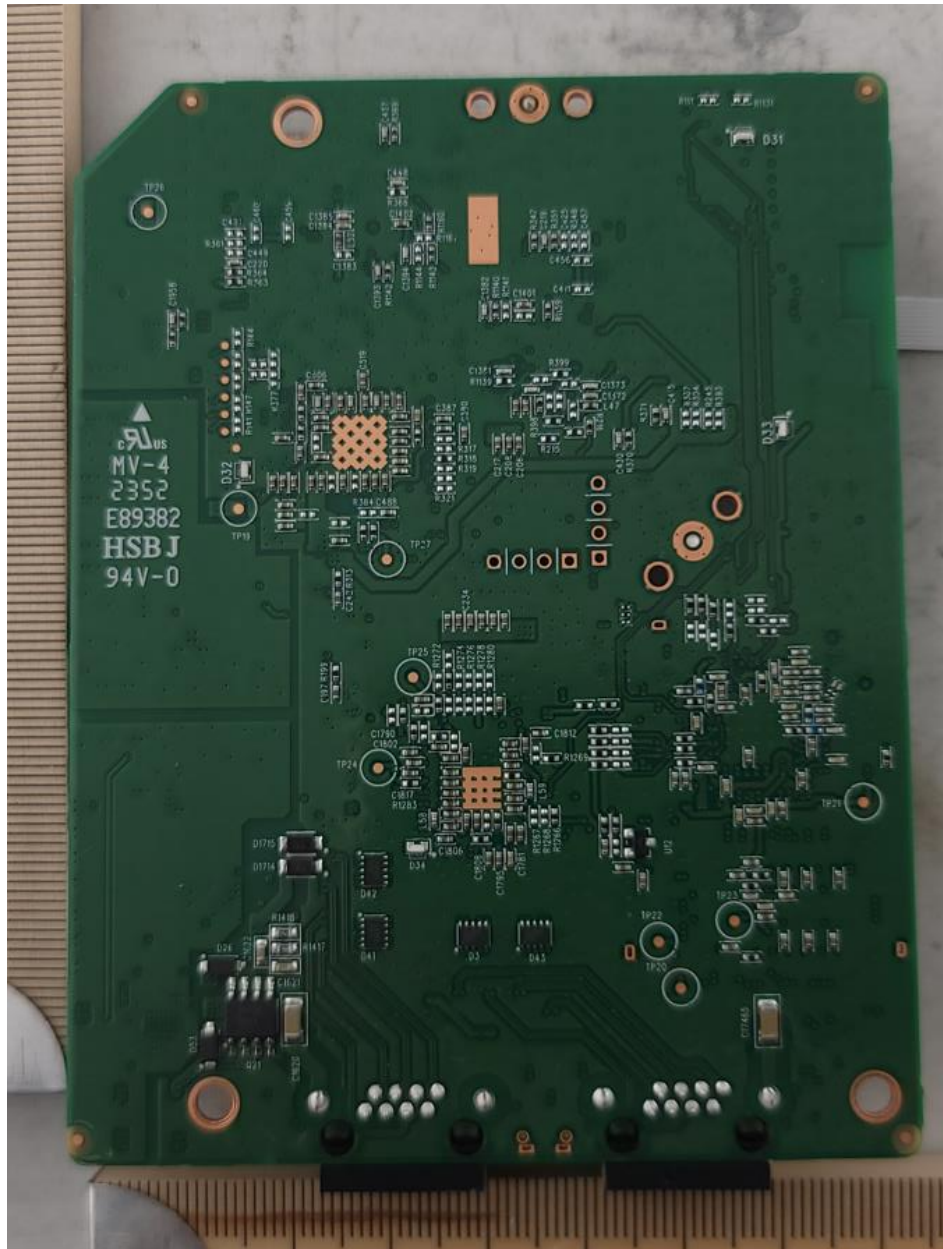


**Photograph 6: Main PCB Front**



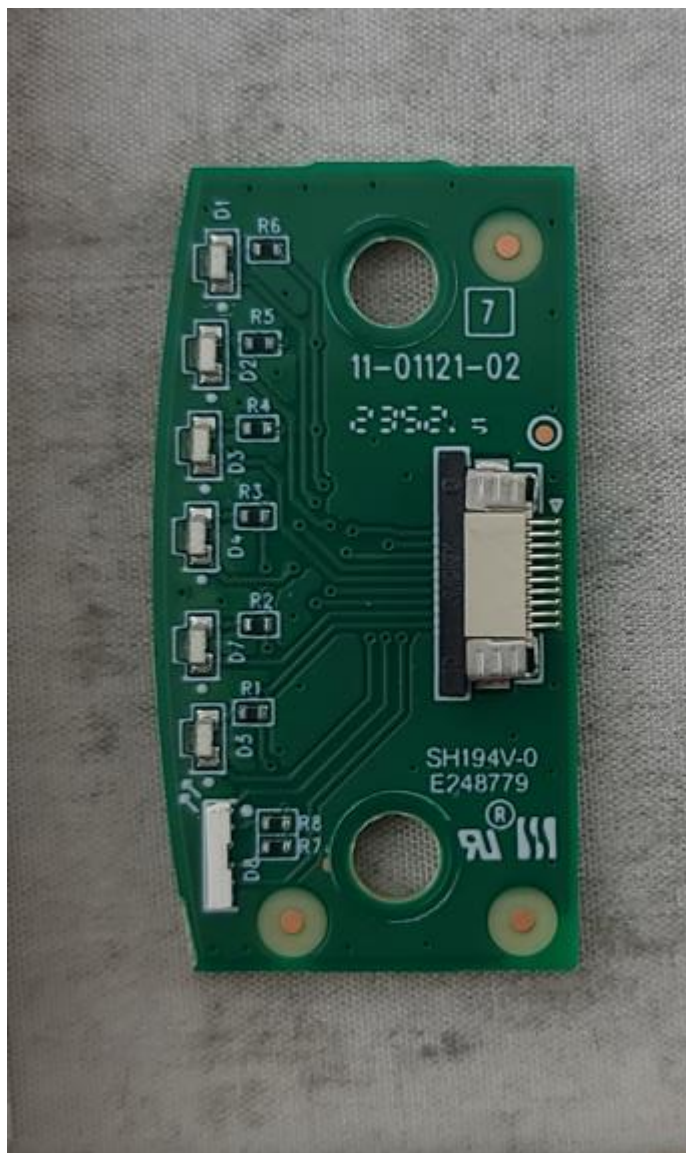


**Photograph 7: Main PCB Back**



**Photograph 8: Main PCB Back With Tape Removed**





**Photograph 9: LED PCB Front**



**Photograph 10: LED PCB Back**