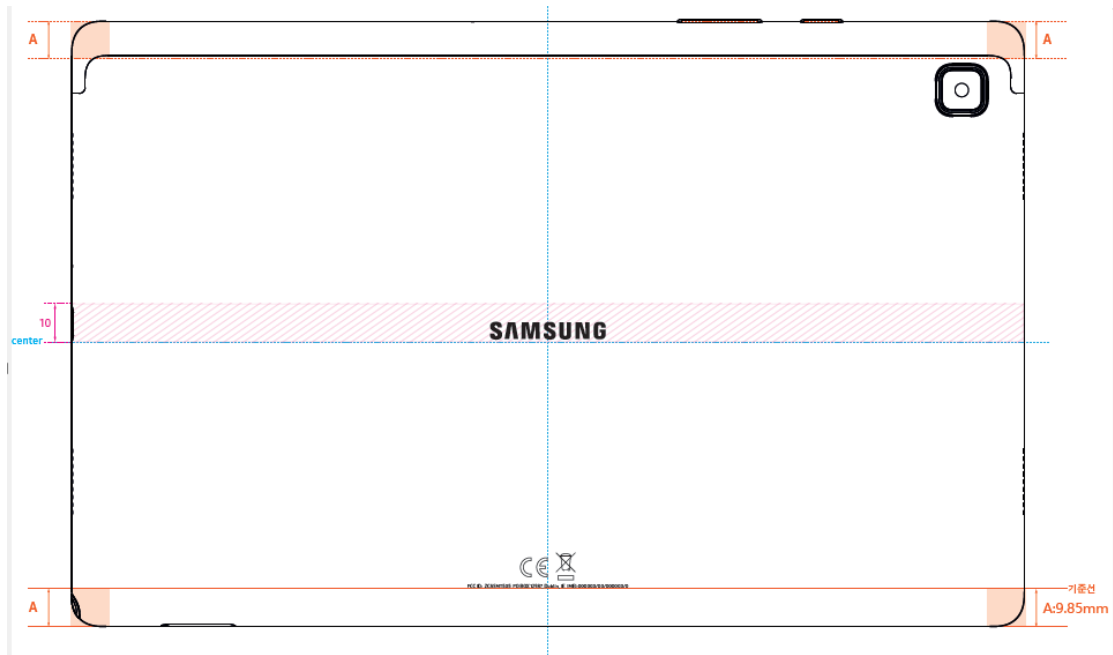


Label:

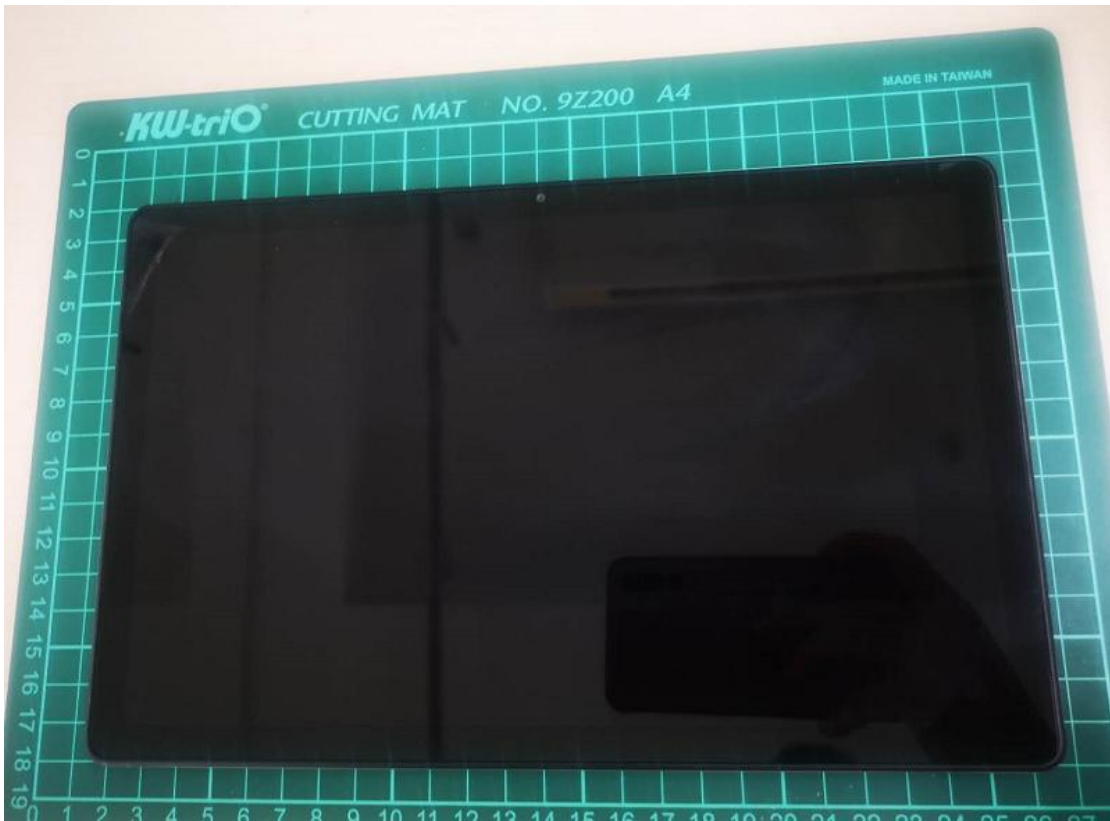


1. CE 마크
- 규정 최소 사이즈 (H) 5.0mm
2. WEEE마크
- 규정 최소사이즈 (H) 7.0mm
3. Font
- SamsungOne 600 _ 3.6 pt
※ Space : 한 줄에서 내용 변경시 띄어쓰기 2칸 (●)
(본 문안은 시방서에 기재하지 않음)

작업용 (100% SIZE)_가변수인 IMEI / SN 는 별도의 색으로 표시



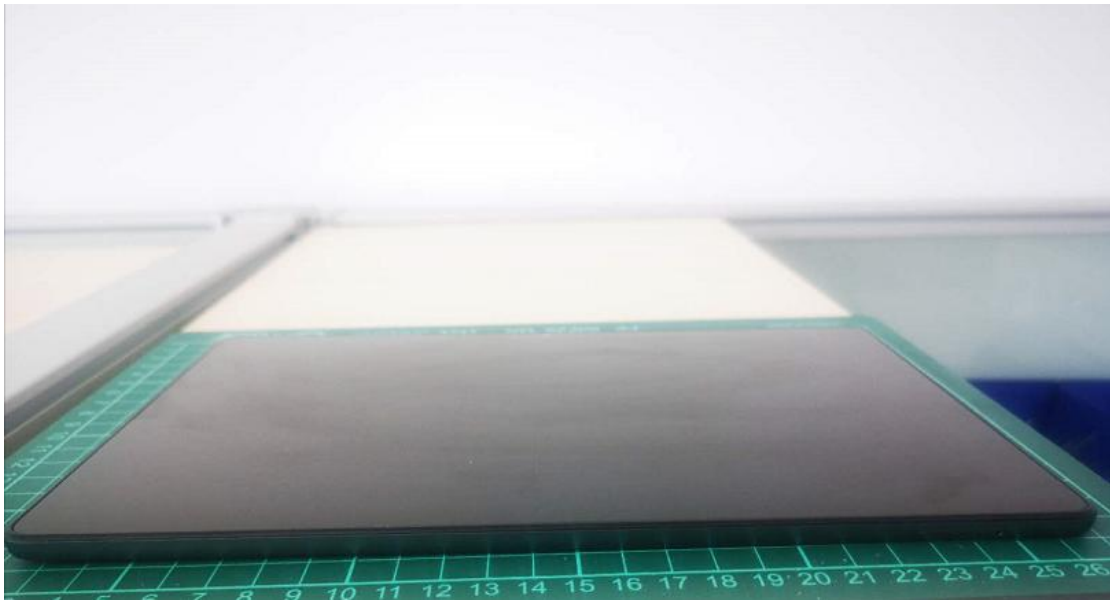
Sample01



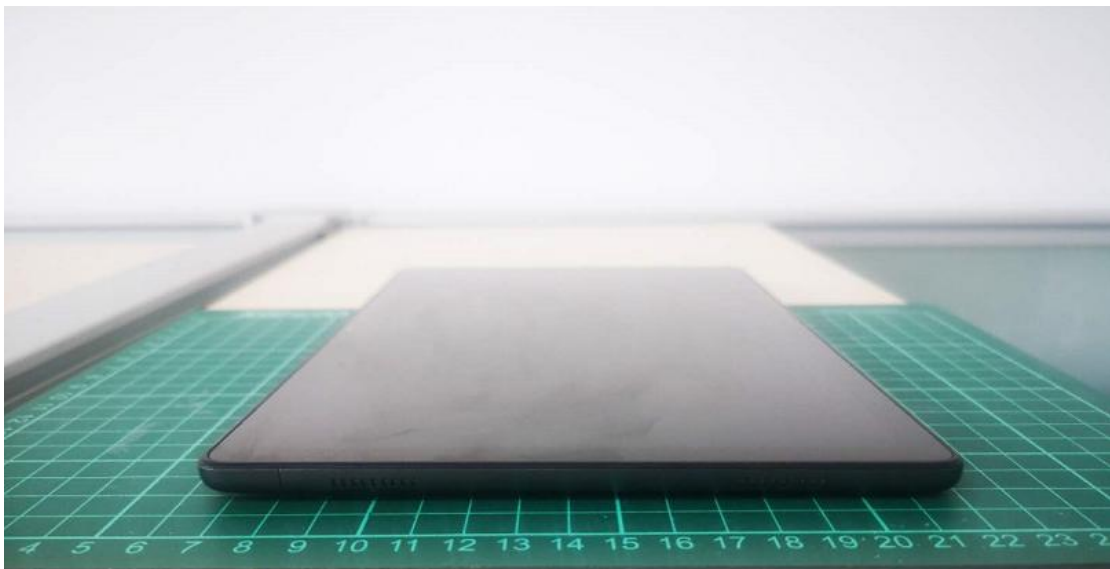
Sample02



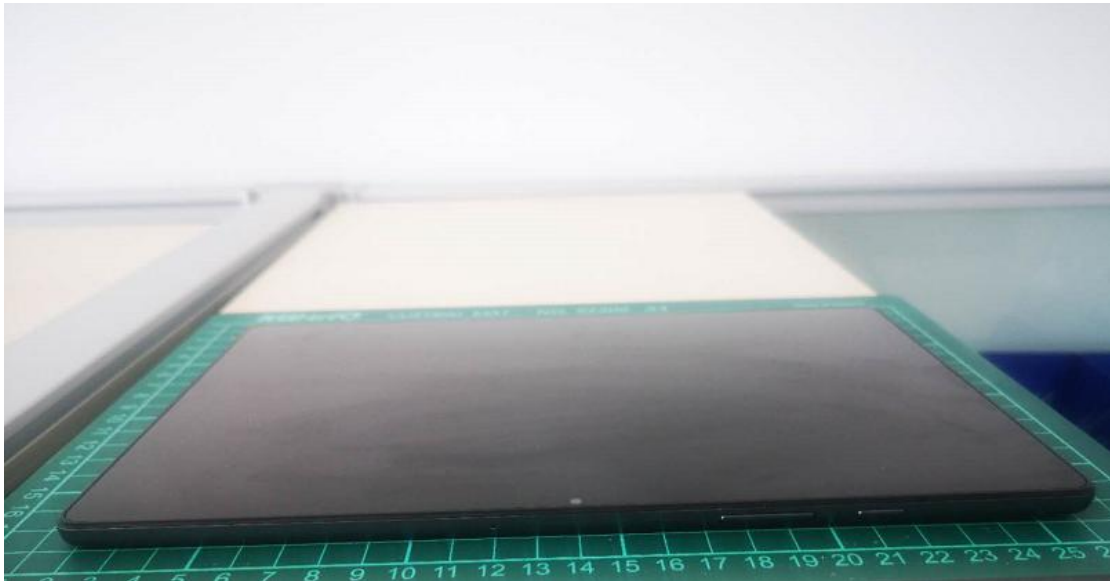
Sample03



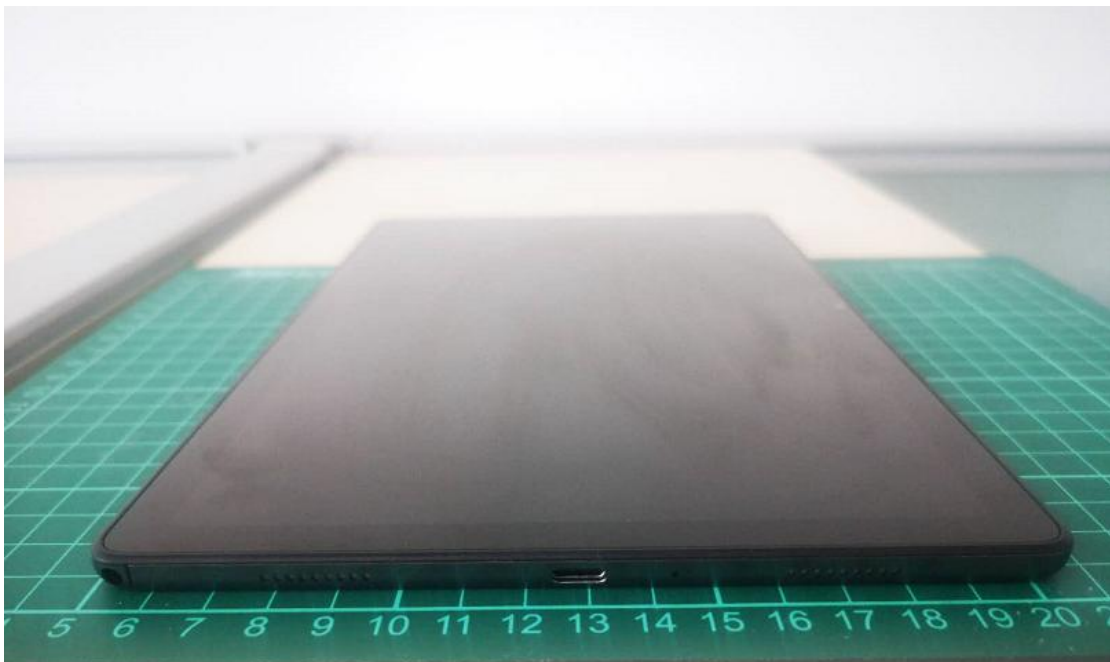
Sample04



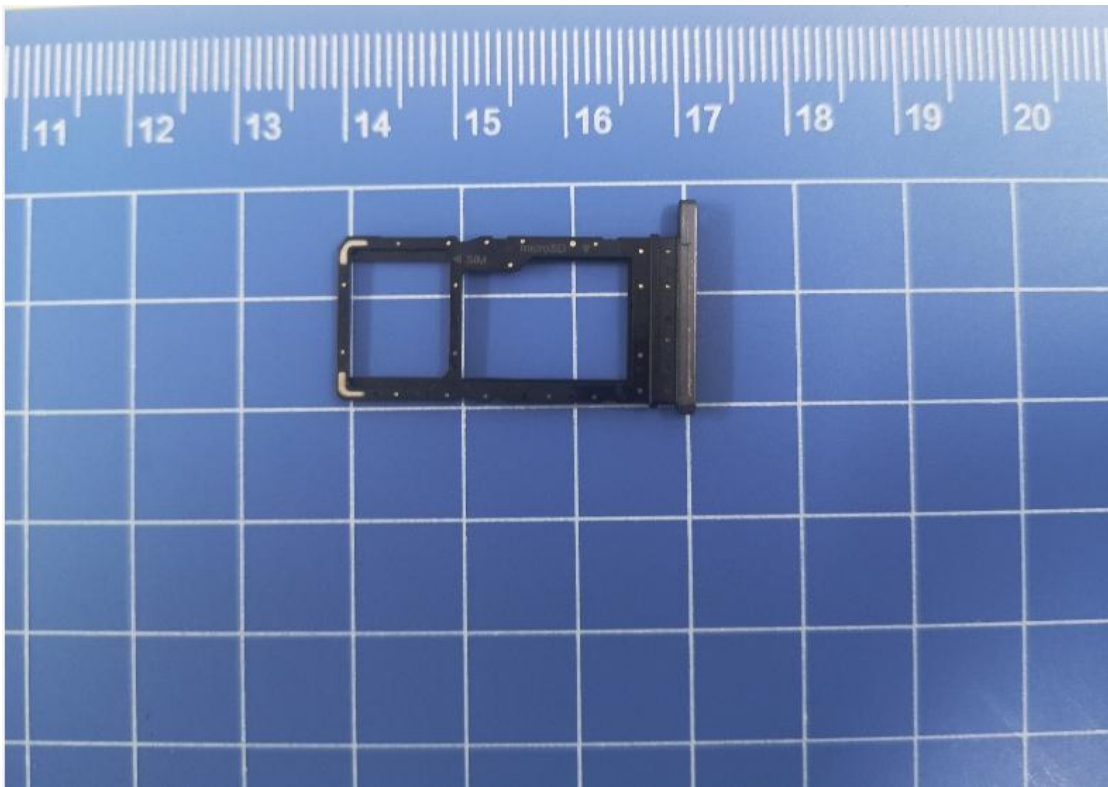
Sample05



Sample06



Sim tray 1:



HS01:



Data Cable1: R.F.Tech (EP-DT725BWE)



Data Cable2: R.F.Tech (EP-DT725BWZ)



Data Cable3: KSD (EP-DT725BWE)



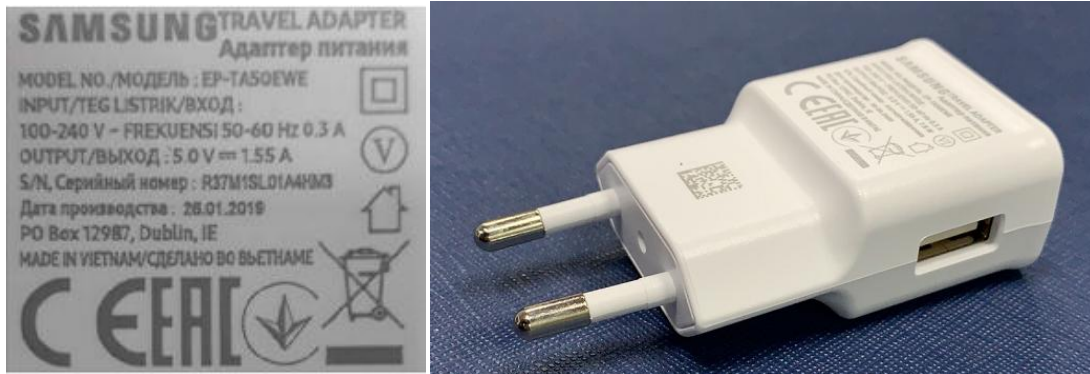
Data Cable4: KSD (EP-DT725BWZ)



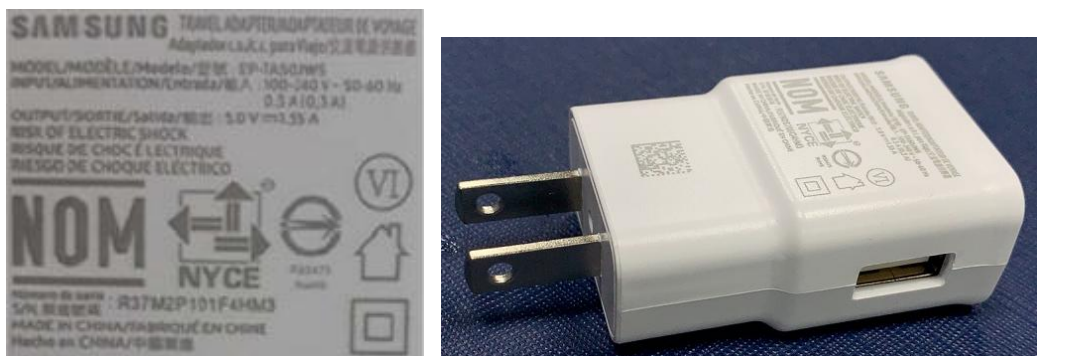
CH04: Dongwon (EP-TA50JWE)



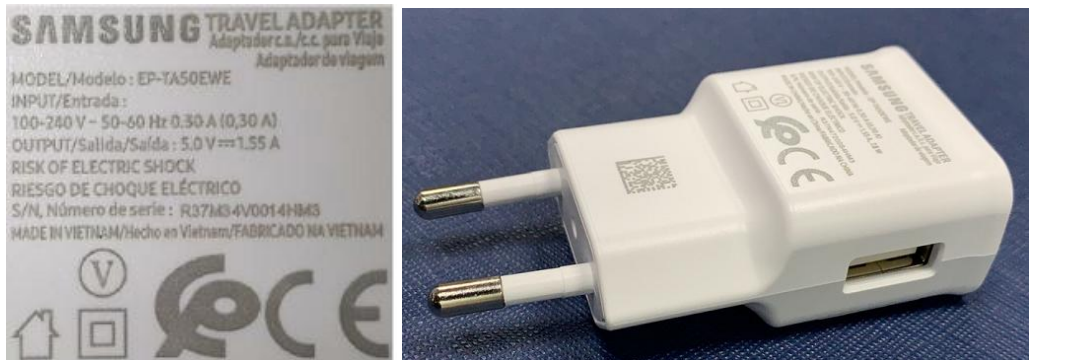
CH05: Dongwon (EP-TA50EWE)



CH06: Dongwon (EP-TA50JWS)



CH02: Dongwon (EP-TA50EWE CHILE)



CH07: Dong Yang (EP-TA50RWS)



CH08: Dong Yang (EP-TA50EWE CHILE)

