



TOTAL INTERNET ACCESS SOLUTION

Omni 128L

IDSL Modem

Quick Start Guide

INSTRUCTIONS MANUAL
FEDERAL COMMUNICATIONS COMMISSION
INTERFERENCE STATEMENT

FCCID: I88 OMNI 128L

This equipment has been tested and found to comply with the limits for a Class B digital device, pursuant to Part 15 of the FCC Rules. These limits are designed to provide reasonable protection against harmful interference in a residential installation. This equipment generates, uses and can radiate radio frequency energy and, if not installed and used in accordance with the instructions, may cause harmful interference to radio communications. However, there is no guarantee that interference will not occur in a particular installation. If this equipment does cause harmful interference to radio or television reception, which can be determined by turning the equipment off and on, the user is encouraged to try to correct the interference by one or more of the following measures:

- Reorient or relocate the receiving antenna.
- Increase the separation between the equipment and receiver.
- Connect the equipment into an outlet on a circuit different from that to which the receiver is connected.
- Consult the dealer or an experienced radio/TV technician for help.

CAUTION:

To assure continued FCC compliance:

- (1) Any changes or modifications not expressly approved by the grantee of this device could void the user's authority to operate the equipment.

FCC Label Compliance Statement:

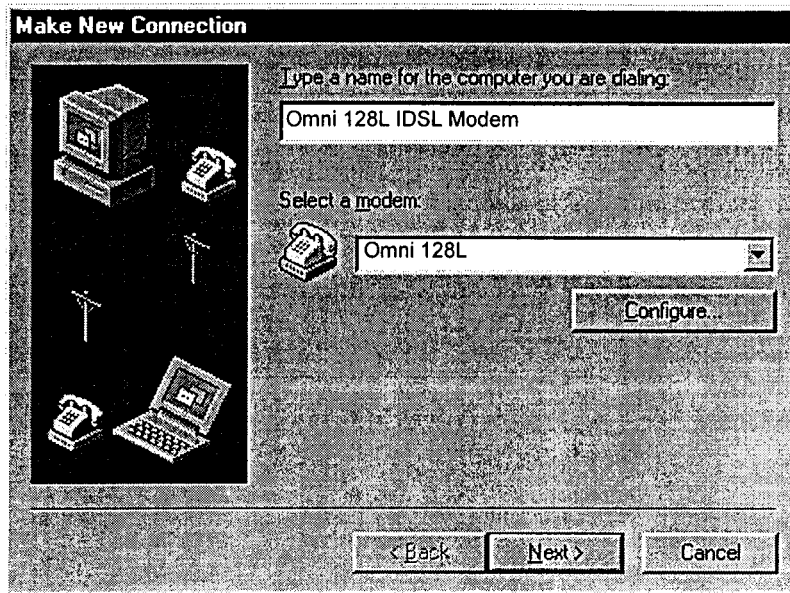
This device complies with Part 15 of the FCC Rules. Operation is subject to the following two conditions: (1) this device may not cause harmful interference, and (2) this device must accept any interference received, including interference that may cause undesired operation.

Create a Dial-up Connection

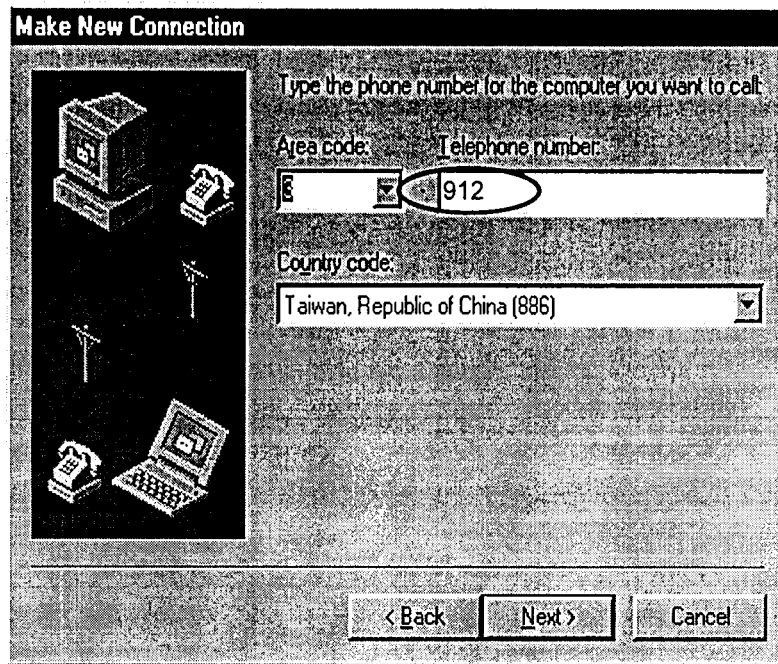
Now you only have one step away to access Internet. Follow the instructions below to create a new Dial-up Connection.

Step 1. Click on **My Computer** of your desktop, select **Dial-up Network**, then click on **Add New Dial-up Connection**.

Step 2. Give a name to this Dial-up Connection; for example, Omni 128L IDSL modem. Then select your Omni 128L as the device to connect to Internet, then click **Next**.



Step 3. Enter the default phone number “912”, then click Next.



Make New Connection

Type the phone number for the computer you want to call.

Area code: Telephone number:

Country code:

< Back Next > Cancel

Step 4. Click **Finish**.

From now on, you can access Internet by your new IDSL modem.

Table of Contents

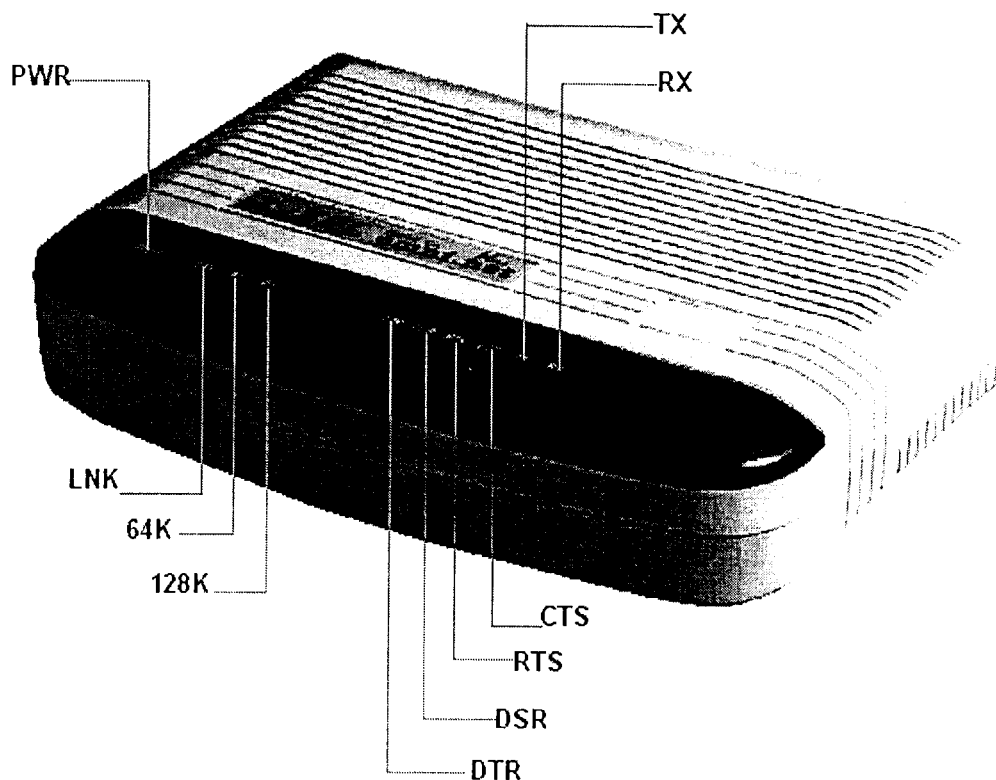
1. Installation	1-1
Front Panel Description	1-1
Back Panel Description and Connections	1-3
Power On and Self Diagnostics	1-4
2. Install Windows 95/98/NT Driver (INF file)	2-1
Customer Support	

1. Installation

Thank you for choosing the ZyXEL Omni 128L IDSL modem. This section is designed to guide you through a quick, easy installation of your new Omni 128L.

The following graphics display the Omni 128L front and rear panels. All installation steps below apply to the Omni 128L.

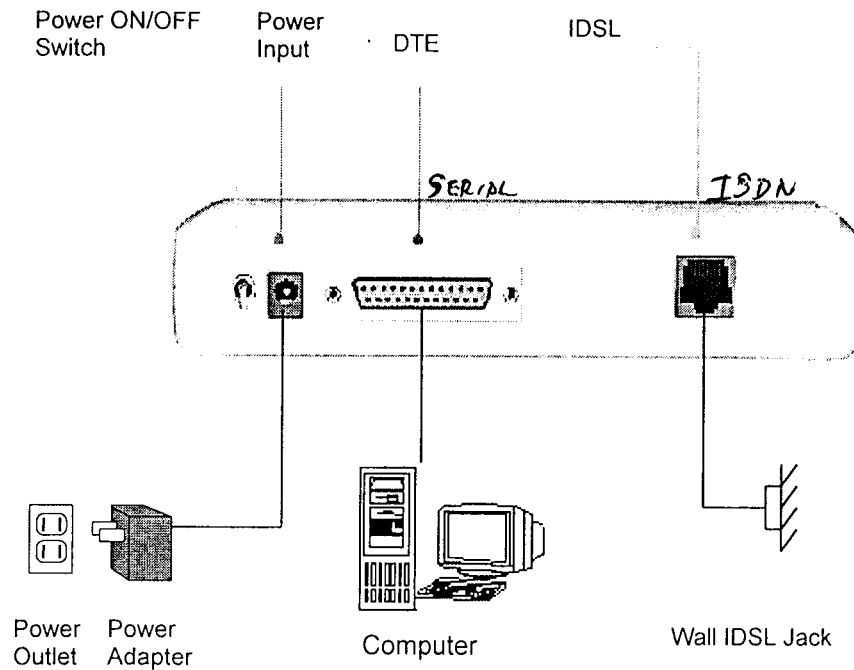
Front Panel Description



Front Panel LEDs

LED	Function	Active	Description
PWR	Power LED	On	When the power is turned ON.
LNK	Link LED	On Blinking	When the link with the local ISDN switch is active. When attempting to make a connection.
64K	B1 Channel	On	When the 64K link is established.
128K	B2 Channel	On	When the 128K link is established.
DTR	Data Terminal Ready	On	When the DTE or computer connected to the DTE port signals that it is ready for communication by establishing an RS-232 link.
DSR	Data Set Ready	On	When the modem is ready for communication with the DTE.
RTS	Request To Send	On	When the DTE has data to be sent to the remote modem. The RTS signal is used in Hardware Handshaking.
CTS	Clear To Send	On	When the modem is ready to receive data from the remote modem. The CTS signal is used in Hardware Handshaking.
TX	Transmit Data	Blinking	When the DTE/Computer transmits data to the DTE port.
RX	Receive Data	On	When the DTE/Computer receives data from the DTE port.

Back Panel Description and Connections



Back Panel Switch and Connectors

ON/OFF	Turn the Omni 128L on or off using this switch.
POWER	Input terminal for power adapter.
DTE	Serial port DB-25 female connector for connection to the serial port of a DTE device such as a computer.
IDSL	IDSL RJ-45 terminal jack; connects to an IDSL interface.

Power On and Self Diagnostics

Once you have completed all of the installation steps above, flip the On/Off switch to the ON (up) position. The unit starts a self-test sequence, when you should see a series of LEDs blinking (LED, 64K, 128K). After this cycle is complete, the PWR light should stay on.

If the test routine fails, the LNK LED flashes.

If you have a communication program loaded and active (connected to the same serial port as the Omni 128L), you should see the **DTR** LED ON after the self-test.

Customer Support

ZyXEL IDSL Modem

If you have any questions about your ZyXEL product or desire customer assistance, contact ZyXEL in one of the following ways.

Contact ZyXEL

Method Location	E-MAIL – Support	Telephone	Web Site	Regular Mail
	– Sales	Fax	FTP Site	
Worldwide	support@zyxel.com.tw support@europe.zyxel.com sales@zyxel.com.tw	+886-3-578-3942 +886-3-578-2439	www.zyxel.com www.europe.zyxel.com ftp.europe.zyxel.com	ZyXEL Communications Corp., 6 Innovation Road II, Science-Based Industrial Park, HsinChu, Taiwan.
North America	support@zyxel.com sales@zyxel.com	+1-714-632-0882 800-255-4101 +1-714-632-0858	www.zyxel.com ftp.zyxel.com	ZyXEL Communications Inc., 1650 Miraloma Avenue, Placentia, CA 92870, U.S.A.
Scandinavia	support@zyxel.dk sales@zyxel.dk	+45-3955-0700 +45-3955-0707	www.zyxel.dk ftp.zyxel.dk	ZyXEL Communications A/S, Columbusvej 5, 2860 Soeborg, Denmark.
Austria	support@zyxel.at sales@zyxel.at	+43-1-4948677-0 +43-1-4948678	www.zyxel.at	ZyXEL Communications Services GmbH, Thaliastrasse 125a/2/2/4 A-1160 Vienna, Austria
Germany	support@zyxel.de sales@zyxel.de	49-2405-6909-0 49-2405-6909-99	www.zyxel.de	ZyXEL Deutschland GmbH, Adenauerstr. 20/A4 D-52146 Wuersele Germany.