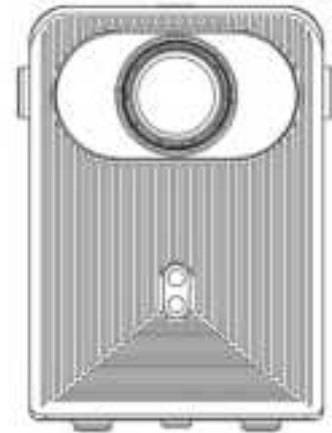


# User Manual

## Smart Projector



Enjoy your time with this projector !

Pls read this manual carefully before using this product, and properly keep for future reference.

## Specification parameters

Parameter	Specifications
Opto-mechanical type	Closed optical machine
System type	BT60
CPU	Match D3100
Memory	128M
WiFi	1. 64x50x2
Projection system	Single-chip LCD
True resolution	1280*720P
LCD	2.8P
Focus mode	Electric focusing
Brightness (ANSI Lumen)	180±20LM
Brightness uniformity	70%
map projection	Desktop projection/desktop projection/lifting projection/lifting projection
Trapezoidal correction	Support electronic T-type and automatic up and down T-type
Image aspect ratio	Default 16:9/4:3/16:9 aspect ratio optional
Projection light source	LED White light Module
Light source power	32W
Light source life	20000H
Whole machine power	42W
Picture size (clear/Max)	30"~120"
Projection ratio	1.35:1
Projection distance	0.8-3.4m
Compatible resolution	1VGA up to 1920x1080@60Hz
HDTV compatible	720p 50/60Hz, 1080i 50/60Hz, 1080p 24/25/30/50/60Hz, 2160p 24/25/30Hz
Noise (normal/economic)	< 45 db (Over criterion 1 M)
Bluetooth	Bluetooth BT2.1
Trunk	Form 4, Europe 3, with * 1
USB 2.0 interface	Support 150 disk FAT, FAT32/60/160/320/640
Operating voltage	Input AC100-240V/50-60Hz 1.5A, Output DC 28V/3.25A
Light	Standby red, working blue
Operation Mode	IR infrared remote control
Panel buttons	Power key
Remote control	Infrared remote control
Mobile storage connection	External 2 disk/removable hard disk
Interface	HDMI*1 USB 2.0*1
Wireless name screen	Support
Wired name screen	Support
Base weight	1.27KG
Support for test	Test
Display language	Multilingual (at least 8 countries)
Software upgrade	Flash drive upgrade
Video mode	MP4/MOV/3GP/MPEG1/MPEG2/1284
Audio mode	MP3, WMA, AAC, AAC, AC3, CAF, WAV/8
Picture mode	BB/BB/BB/BB/BB
Accessories (Standard)	Remote control * 1/power cord * 1/Instruction manual * 1/USB cord * 1
	Remarks: Increase or decrease according to customer requirements

## Thanks for your choosing!

### Warning

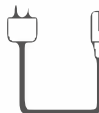
Please do not open the case in order to prevent electric shock. Customers cannot repair parts of inside devices. Please contact professional maintenance staff to repair it.

## Standard accessories

Some of the accessories may vary by region.



Remote control



Power Cable

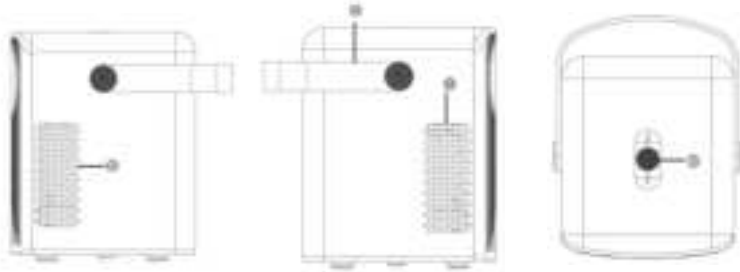


HDMI cable



User Manual

## Interface definition



1,Type-C power supply

2,earphone

3,usb

4,HDMI

5,speaker

6,Air outlets

7,Posterior IR

8,Tote bag

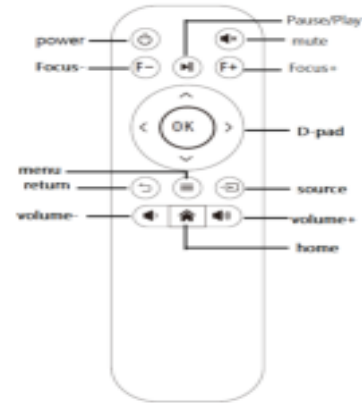
9,On/off

10,Right air inlet

11,Left air inlet

12,lens

13,Front-facing IR



## Installation

### Choosing a location

Before choosing an installation location for your projector, take the following factors into consideration:

- Size and position of your screen
- Electrical outlet location
- Location and distance between the projector and the rest of your equipment

You can install your projector in the following ways.

#### 1. Front-Desktop:

Select this location with the projector placed near the floor in front of the screen .This is the most common way to position the projector for quick setup and portability.

Turn on the projector and make the following settings:

Image setting >Projection mode >Front-Desktop



## 2. Front Ceiling:

Select this location with the projector suspended from the ceiling in front of the screen. Turn on the projector and make the following settings:  
Image setting >Projection mode  
>front ceiling



## Operation

### Starting up the projector

1. Plug the power cable into the projector and a power outlet. Turn on the power outlet switch (where fitted). The POWER indicator light on the projector lights red after power has been applied.

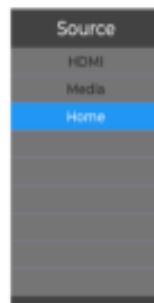
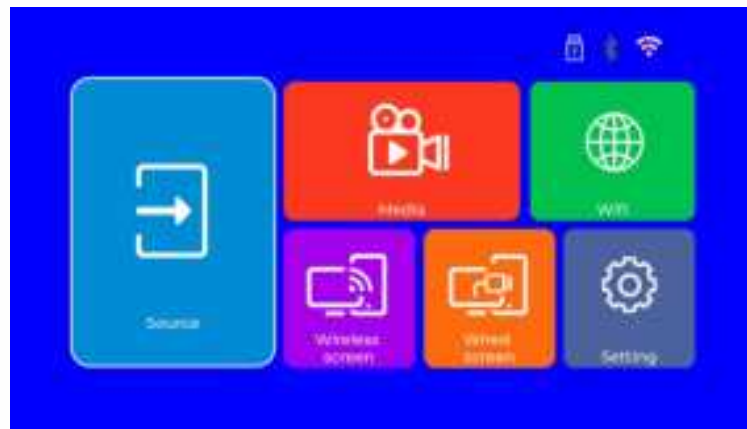
Please use the supplied power cable to avoid possible dangers such as electric shock and fire.



2. Press the power button on the projector or remote control to start the projector. As soon as the lamp lights up. The POWER indicator remains green when the projector is turned on. The fans start operating, and a start-up image is displayed on the screen while it warms up. The projector does not respond to further commands while it is warming up.

## Selection signal

Users need to select the correct signal input source before accessing the computer, TV, set-top box, game box, dvd select the home page. There will be a drop-down selection menu as shown below.



## Connection

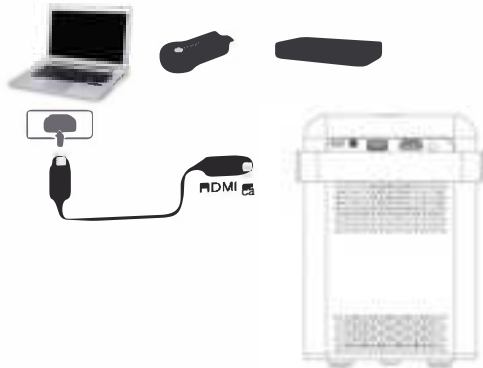
When connecting a signal source to the projector, be sure to:

1. Turn all equipment off before making any connections.
2. Use the correct signal cables for each source.
3. Make sure the cables are firmly inserted.

In the connection illustrations shown below, some cables may not be included with the projector (see standard accessories). They are commercially available from electronics stores.

## Connecting HDMI devices

HDMI (High-Definition Multimedia Interface) supports uncompressed video data transmission between compatible devices like Laptop, DTV tuners, DVD players, Blu-ray players and displays over a single cable. You should use an HDMI cable when making a connection between the user first connects to the wifi or sets the hotspot, and can watch the video online after connecting to the network. n the projector and HDMI devices. HDMI device: Laptop, DVD player, digital tuner, Chromecast, Fire TV etc



## Homepage

Source, Media ,Wifi,Wireless screen , Wire screen and setting are showed on homepage. The Source is the entrance of external device.



## Media

This page can play video, music, photos and e-books as well.



## Bluetooth

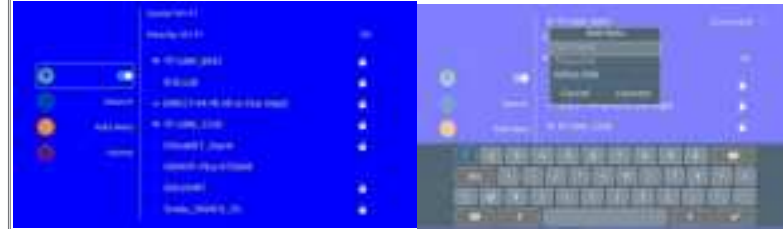
- 1, turn on settings-bluetooth-search for connected Bluetooth
- 2, click on Bluetooth to pair
- 3, then you will be prompted: Bluetooth can only be connected to Bluetooth stereo or Bluetooth sound device.



## WIFI

imirror is for Apple devices only.

- 1.Go to Network Setting and connect to your WiFi.
- 2.Turn on the WiFi on your iphone/ipad, and connect to the same WiFi.
- 3.Enter your password and click the link



## Wireless screen

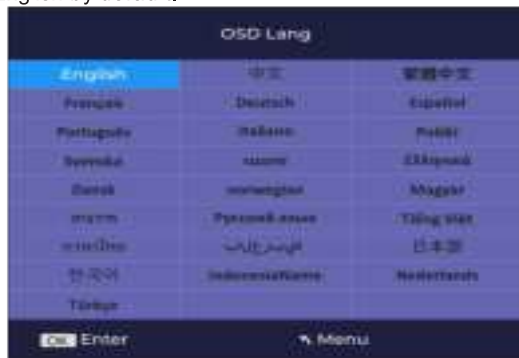
Wireless screen support for Apple and Android devices.

- 1.Turn on WiFi of the mobile phone.
- 2.Turn on the "wireless display"/"screen mirroring" function in the phone settings and choose the device name.



## Language setting

Users can choose Chinese, English, etc. by default. This version is English by default.



## Setting

Settings menu can be set Bluetooth, sound, image, T-type, etc.



## Wired screen

Scan the code to download the App, after installation, plug in the original data line for wired connection, connection process tips please allow.



## T-alignment and focusing

Press the up and down keys to manually adjust the t-shape and focus



## WARNING

1. Use this product only for intended use as described in this manual.
- 2.No peeking into the lens while projectors is working.
- 3.No cloth, or any other material that could stock ventilation holes of the projector.
- 4.No water-proof function for this projector ,no such apparatus as vase or cup should be put around the projector.
- 5.Projector should be stocked and used at dry and clean condition.
- 6.Please turn off the projector and cut off the power supply, if it is not used for along time.
7. Please use factory original foam and other shockproof material while transporting.
- 8.If projector defected, do not attempt to repair it by yourself. Please contact with your distributor or factory directly.
9. To avoid risk of electronic shock, do not disassemble or repair the device. Incorrect repair may cause risk of electronic shock or injury to people during operating.

Thanks for reading!

void the user' s authority to operate the equipment .

### NOTE:

This device complies with part 15 of the FCC Rules.

Operation is subject to the following two conditions:

- (1) This device may not cause harmful interference, and
- (2) this device must accept any interference received, including interference that may cause undesired operation.

### FCC Statement :

This equipment has been tested and found to comply with the limits for a Class B digital device, pursuant to part 15 of the FCC Rules. These limits are designed to provide reasonable protection against harmful interference in a residential installation. This equipment generates, uses and can radiate radio frequency energy and, if not installed and used in accordance with the instructions, may cause harmful interference to radio communications. However, there is no guarantee that interference will not occur in a particular installation. If this equipment does cause harmful interference to radio or television reception, which can be determined by turning the equipment off and on, the user is encouraged to try to correct the interference by one or more of the following measures:

- Reorient or relocate the receiving antenna.
- Increase the separation between the equipment and receiver.
- Connect the equipment into an outlet on a circuit different from that to which the receiver is connected.
- Consult the dealer or an experienced radio/TV technician for help.

The equipment complies with FCC Radiation exposure limit set forth for uncontrolled environment. This equipment should be installed and operated with minimum distance 20cm between the radiator and your body.