

[VTECH]

[2.4GHz Antenna]

Model: LF2423 BU

Antenna description:

This antenna is optimized and used in the Baby unit in the baby monitor models. This antenna is an on-board antenna that directly connect to the RF output in the main PCB.

Ordering information:

Model	Description
LF2423 BU	2.4GHz Antenna

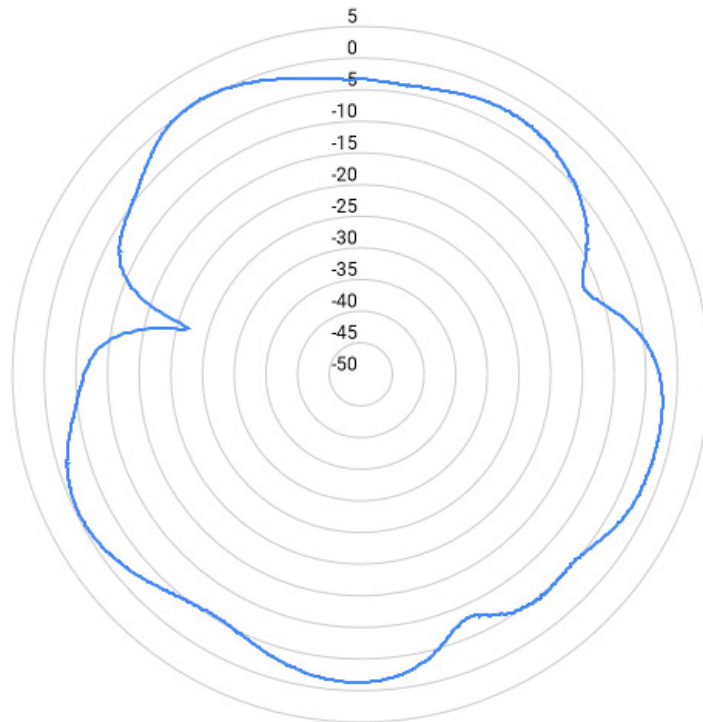
Specification:

Operation Frequency Range	2405-2475 MHz
Maximum Gain	0 dBi
Type	Monopole on-board antenna
Operation bandwidth	70MHz
Nominal Impedance	~50 ohms
Connectors	-
Dimensions	8x25mm
Manufacturer	Vtech Telecommunications Ltd
Manufacturer address	23/F, Tai Ping Industrial Centre, Blk1, 57 Ting Kok Road, Tai Po, Hong Kong
Model number	ANT-LF2423-F-FH-1

[VTECH]
[2.4GHz Antenna]

Antenna pattern (2436MHz) (the frequency with maximum gain)

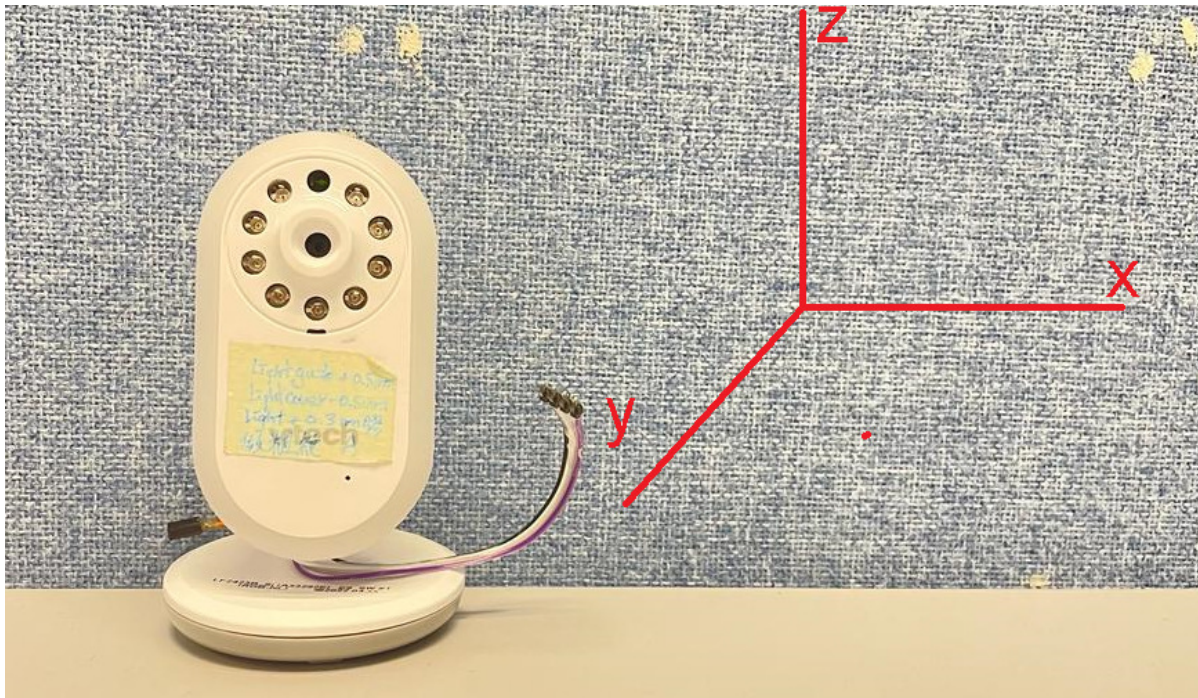
XY plane (gain theta)



[VTECH]

[2.4GHz Antenna]

Coordination:



Physical Dimension:

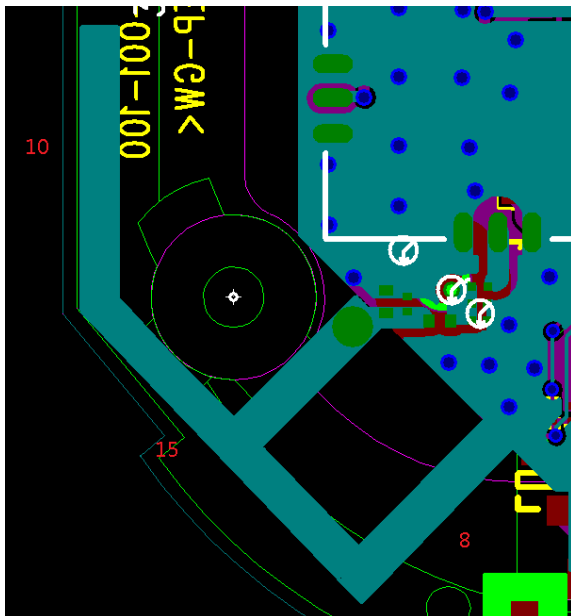


Figure 1 Physical dimension (mm)