

SOPHOS

Quick Start Guide

Sophos AP6 Series

For more information about your appliance, scan the QR code or visit www.sophos.com/get-started-firewall



United Kingdom Sales
Tel.: +44 (0)8447 671131
Email: sales@sophos.com

North American Sales
Toll Free: 1-866-866-2802
Email: nasales@sophos.com

Sales DACH
(Deutschland, Österreich, Schweiz)
Tel.: +49 (0) 611 585 8-0
Tel.: +49 (0) 721 255 16-0
E-Mail: sales@sophos.de

Australia and New Zealand Sales
Tel.: +61 2 9409 9100
Email: sales@sophos.com.au

Japan Sales
Tel.: +81 3 3568 7550
Email: sales@sophos.co.jp

China Sales
Tel.: +86-10-6567 5820
Email: sales@sophos.co.jp

Shanghai Sales
Tel.: +86-21-32517160
Email: sales@sophos.co.jp

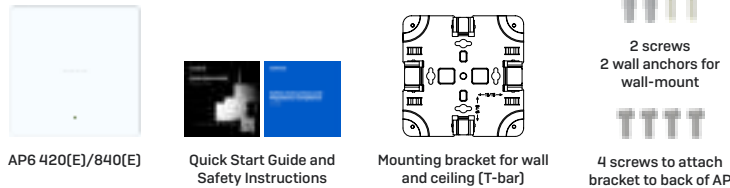
© Copyright 2022. Sophos Ltd. All rights reserved.
Registered in England and Wales No. 2096520, The Pentagon, Abingdon Science Park,
Abingdon, OX14 3YP UK. Sophos is the registered trademark of Sophos Ltd.
All other product and company names mentioned are trademarks or registered
trademarks of their respective owners.

2022-11-17 QSG-EN (DD)

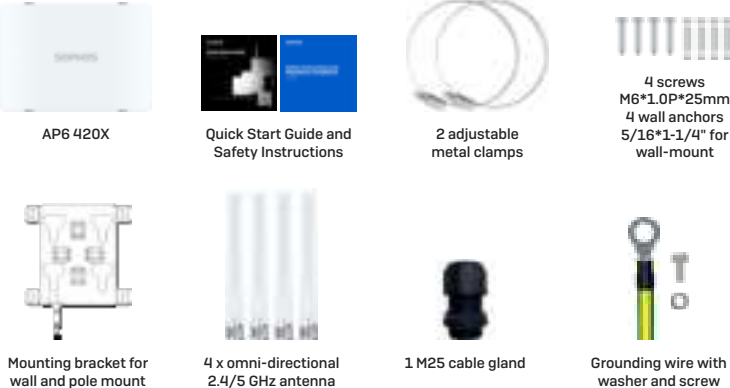
SOPHOS

Box contents

Indoor Access point



Outdoor Access point



LEDs

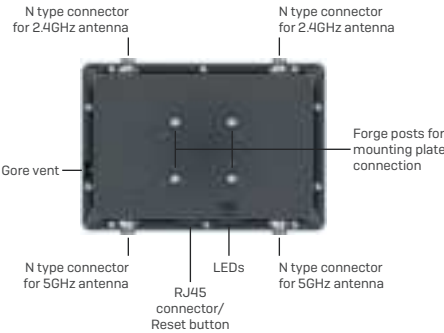
AP6 420(E)/840(E)		
Off	Off	AP is off or reboot started
Green	Solid	Normal Operation
	Flashing	AP is booting and connecting to wireless controller
Amber	Solid	AP has no connection to the wireless controller
	Flashing	AP is not claimed by wireless controller
Red	Solid	Error, no wireless controller found. AP will reboot (if not yet claimed by a controller). Check network connection if error persists If reset button pressed: AP preparing configuration reset
	Flashing Slowly	Configuration reset in progress*
	Flashing Fast	Firmware update in progress**

AP6 420X			
Status	Radio	Mesh	
Off	Off	Off	AP is off or reboot started
Flashing Green	Off	Off	AP is booting and connecting to wireless controller or applying configuration*
Flashing Green	Flashing Green	Off	Configuration reset in progress*
Flashing Green	Flashing Green	Flashing Green	Error, no wireless controller found. AP will reboot (if not yet claimed by a controller). Check network connection if error persists. If reset button pressed: AP preparing configuration reset
Flashing Fast Green	Off	Off	Firmware update in progress**
Solid Green	Flashing Green	Flashing Green	AP has no connection to the wireless controller
Solid Green	Flashing Green	Flashing Fast Green	AP is not claimed by wireless controller
Solid Green	Off	Off or Solid Green	AP is operation in Single-Band
Solid Green	Green	Off or Solid Green	AP is operation in Dual-Band

* Your AP should recover from this state after a maximum of 5 minutes.
** Note: Do not disconnect from power, nor reboot or reset the device. When the device connects to Sophos Central or Sophos Firewall for the first time, it might take up to 15 minutes to update firmware

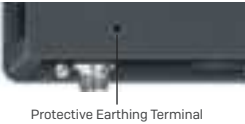


AP6 420X



Outdoor Access Point Grounding

- WARNING:** Model AP6 420X has a separate protective earthing terminal on the chassis which must be permanently connected to earth ground to adequately ground the chassis and protect the operator from electrical hazards. The installation of the earth grounding must be done by a skilled service personnel.
- CAUTION:** Before you begin the installation, ensure that service personnel has attached an appropriate grounding lug to the grounding cable that you supply.
- Power installation must be performed by a qualified electrician in accordance with National Electrical Code, ANSI/NFPA 70 and Canadian Electrical Code, Part I, CSA C22.1.
- To connect earth ground to unit:
- Connect one end of the grounding cable to a proper earth ground.
 - Place the grounding lug attached to the grounding wire over the protective earthing terminal.
 - Secure the grounding lug to the protective earthing terminal with the supplied washers and screws.
 - Dress the grounding cable and ensure that it does not touch or block access to other components.

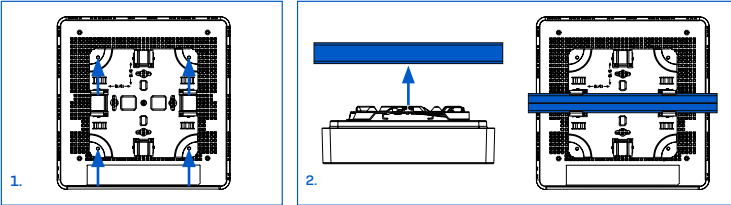


- WARNING:** Prior to powering on the unit, connect the frame of the unit to earth. For the earthing wire, green and yellow insulation is required, and the cross-sectional area of the conductor must be more than 0.75mm² or 18 AWG.

Mounting (Indoor Access Points)

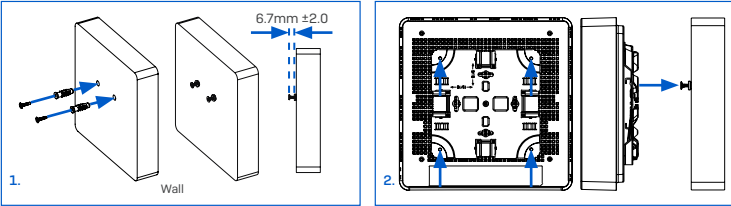
Ceiling Mount

- 1. Fix the bracket to the rear of the Access Point by using 4 of the supplied screws.
- 2. To install, put the access point underneath the ceiling rail (t-bar) and push it into place. To dismount, push the spring locks to the side and pull the access down.



Wall Mount

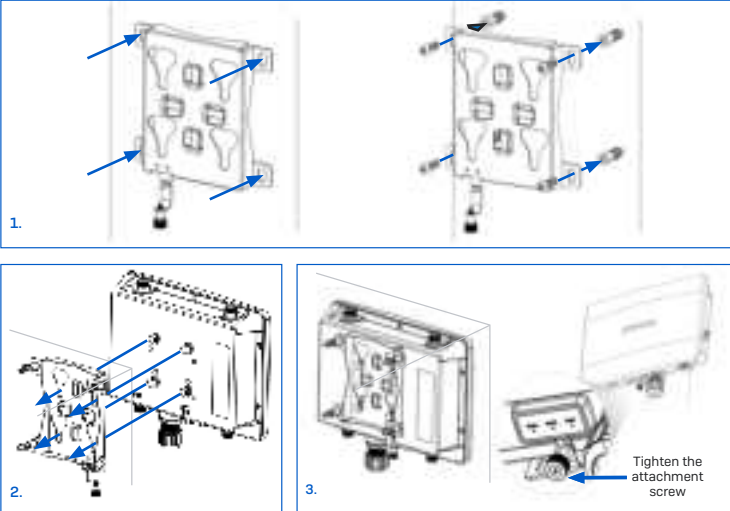
- 1. Mark the wall where you want to insert the provided anchors which must be 6.2cm [2.44 in.] apart
- 2. Drill the 2 supplied wall anchors into the wall at the marked positions and screw 2 supplied screws into them. Make sure they stand out ~6.7mm
- 3. Fix the bracket to the rear of the Access Point by using 4 of the supplied screws.
- 4. Hang the access point (with the mounted bracket) on the wall by aligning the key holes with the mounted screws



Mounting (Outdoor Access Points)

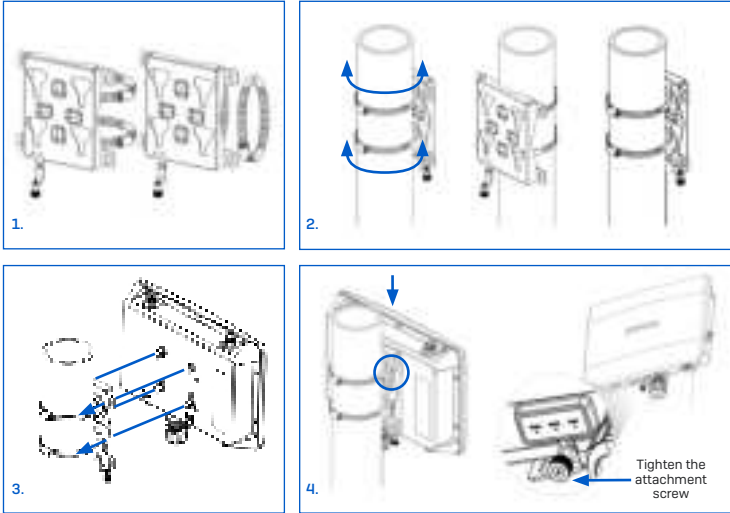
Wall mount

- 1. Use the mounting bracket to mark the screw mounting positions on the wall.
- 2. Attach the access point to the bracket by hanging the 4 forge posts into the attachment slots of the bracket and pressing it down.
- 3. Tighten the attachment screw to fix the access point to the bracket.

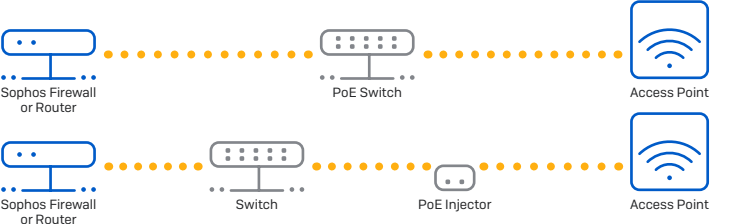


Pole Mount

- 1. Attach the two metal clamps to the back of the mounting bracket using the vertical or horizontal mounting slots (according to the desired orientation).
- 2. Hold the bracket against the pole and tighten the metal clamps.
- 3. Attach the access point to the bracket by hanging the 4 forge posts into the attachment slots of the bracket and pressing it down.
- 4. Tighten the attachment screw to fix the access point to the bracket.



Connecting the Access Point



WARNING: To ensure safe operation, model AP6 420X is intended to be used only with Listed, IEEE 802.3at-compliant, Power over Ethernet Power Sourcing Equipment that is designed for connection to outdoor devices. The power supply cord(s) of the PoE injector or PoE Switch must be plugged into socket-outlet(s) with earthing connection. If you need assistance with selecting or purchasing an appropriate power source, please contact your local Sophos sales representative.

Connect the LAN [PoE] port of the access point to a PoE+ switch or PoE+ injector using an RJ45 Ethernet cable.

Note: Model AP6 840E requires a PoE++ [802.3bt] switch/injector

Model AP6 420 can also be connected to an Ethernet switch and powered by a separate Power Supply (available as an accessory from your Sophos partner). The access point will now boot and try to receive an IP address via DHCP (either from the Sophos firewall or another DHCP server in your network).

After successfully receiving an IP address, the access point attempts to communicate with Sophos Central. In order to do so, the firewall needs to either be the default gateway of the access point or be on the default route (most likely your route to the internet).

Whilst waiting for DHCP and searching for the wireless controller, the access point status LED will show its current state (please see LED table).

Configuration

After successful connection to the wireless controller the status LED turns to solid green. The access point is now ready to be managed.

Please refer to the Sophos Central online help to start the configuration of your access point.

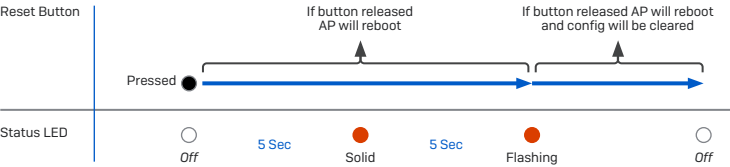
Reboot & Reset

Reboot with current image and configuration

- 1. Press reset button.
- 2. Release reset button.
- 3. AP reboots (Status LED will go off, then will start blinking after some seconds and turn to solid green after reboot is complete).

Reboot with current image and clear configuration (Indoor Access Points)

- 1. Press and hold reset button for 5 sec.
- 2. Status LED will turn solid red for 5 sec. You can still cancel the configuration clearance process by releasing the reset button before the Status LED starts flashing. In that case the AP will reboot as described above.
- 3. After 5 sec. Status LED will start flashing red.
- 4. Release reset button (configuration will be cleared).
- 5. AP reboots with factory default settings.



Reboot with current image and clear configuration (Outdoor Access Points)

- 1. Press and hold reset button for 5 sec.
- 2. Status, Radio, and Mesh LEDs will start flashing for 5 sec. You can still cancel the configuration clearance process by releasing the reset button before the Mesh LED turns Off. In that case the AP will reboot as described above.
- 3. After 5 sec. Mesh LED turns off. Status and Radio LEDs continue flashing.
- 4. Release reset button (configuration will be cleared).
- 5. AP reboots with factory default settings.

