

FCC ID LABEL & LOCATION

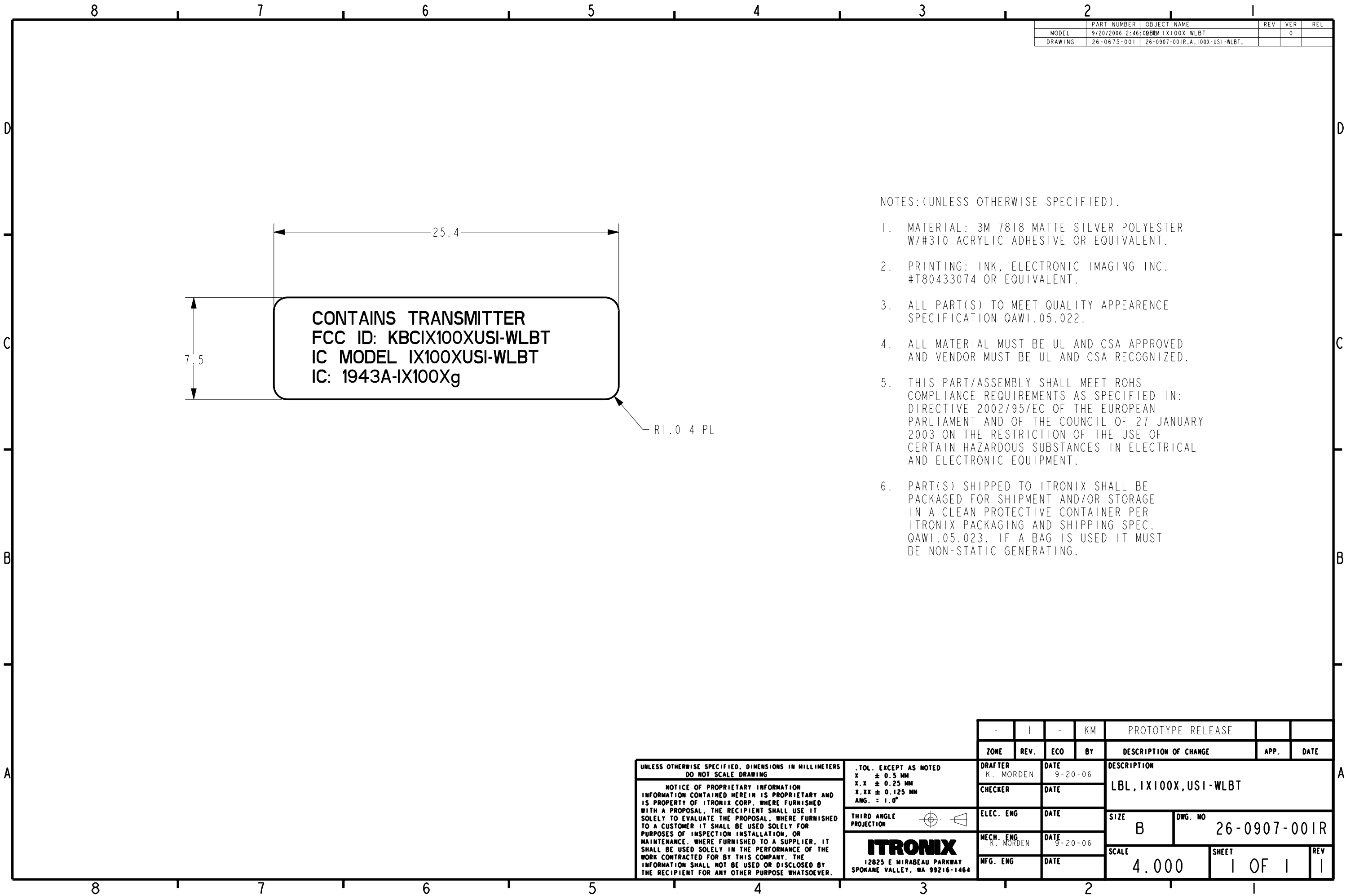
LABELING REQUIREMENTS PER §2.925

The label(s) shall be permanently affixed at a conspicuous location on the device.



**SEE NEXT PAGE(S) FOR
PART 15(B) DoC LABEL**


**SEE NEXT PAGE(S)
FOR FCC ID LABEL**

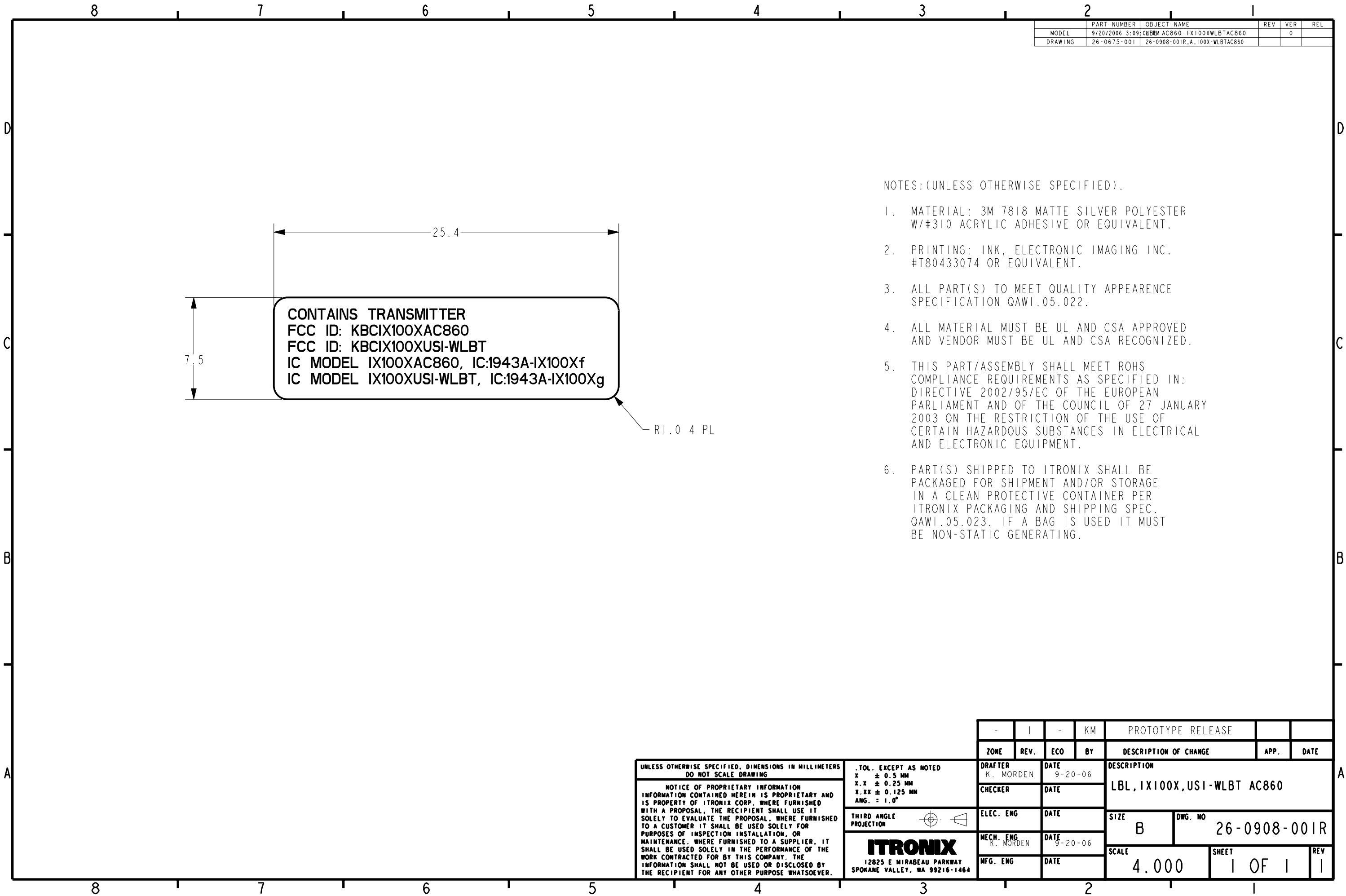


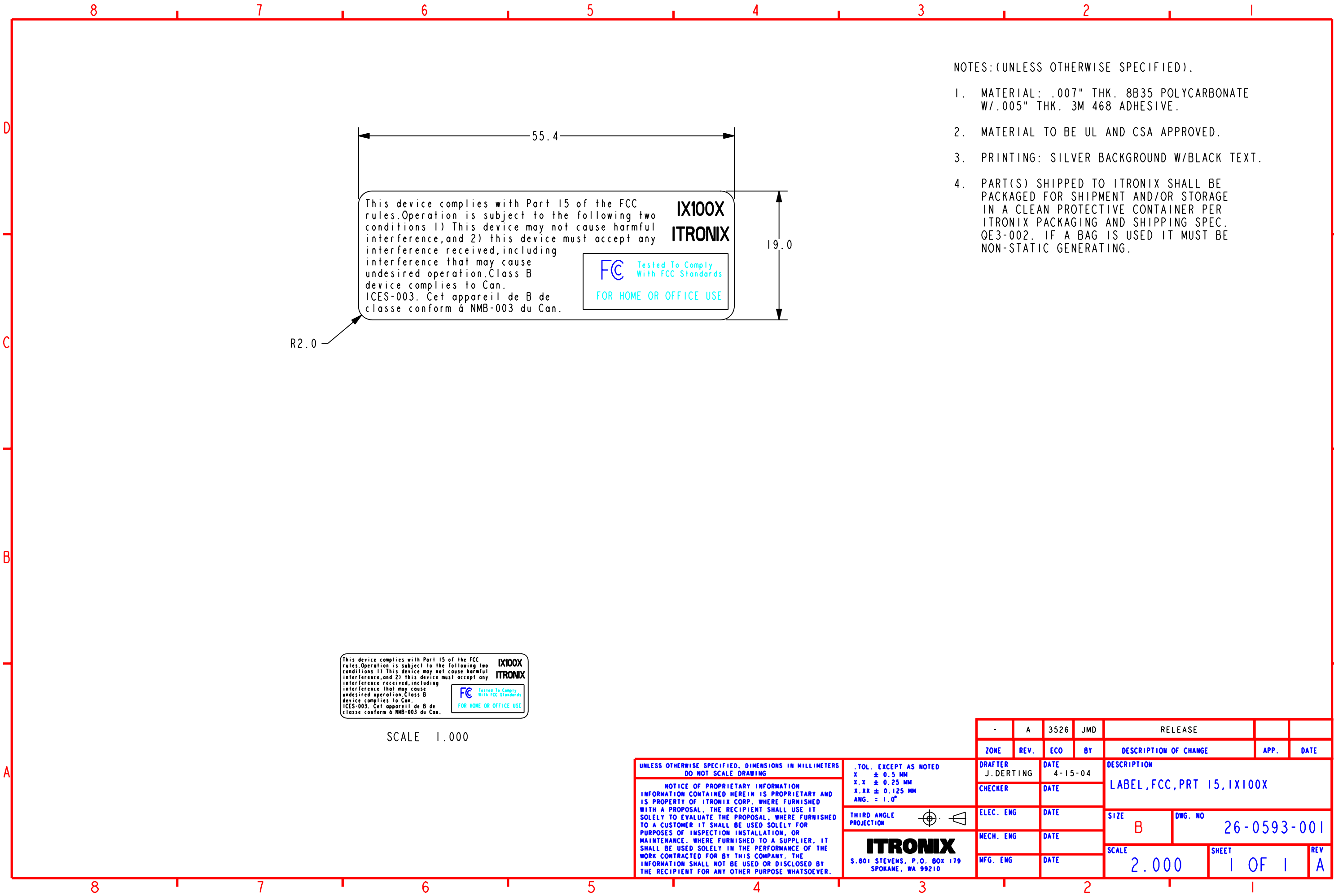
| | | | | | |
|---------|-------------------|-------------------------------|-----|-----|-----|
| | PART NUMBER | OBJECT NAME | REV | VER | REL |
| MODEL | 9/20/2006 2:46:08 | BRM-IX100X-WLBT | | 0 | |
| DRAWING | 26-0675-001 | 26-0907-001R.A.100X-USI-WLBT. | | | |

NOTES:(UNLESS OTHERWISE SPECIFIED).

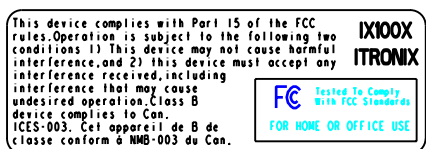
1. MATERIAL: 3M 7818 MATTE SILVER POLYESTER W/#310 ACRYLIC ADHESIVE OR EQUIVALENT.
2. PRINTING: INK, ELECTRONIC IMAGING INC. #T80433074 OR EQUIVALENT.
3. ALL PART(S) TO MEET QUALITY APPEARENCE SPECIFICATION QAWI.05.022.
4. ALL MATERIAL MUST BE UL AND CSA APPROVED AND VENDOR MUST BE UL AND CSA RECOGNIZED.
5. THIS PART/ASSEMBLY SHALL MEET ROHS COMPLIANCE REQUIREMENTS AS SPECIFIED IN: DIRECTIVE 2002/95/EC OF THE EUROPEAN PARLIAMENT AND OF THE COUNCIL OF 27 JANUARY 2003 ON THE RESTRICTION OF THE USE OF CERTAIN HAZARDOUS SUBSTANCES IN ELECTRICAL AND ELECTRONIC EQUIPMENT.
6. PART(S) SHIPPED TO ITRONIX SHALL BE PACKAGED FOR SHIPMENT AND/OR STORAGE IN A CLEAN PROTECTIVE CONTAINER PER ITRONIX PACKAGING AND SHIPPING SPEC. QAWI.05.023. IF A BAG IS USED IT MUST BE NON-STATIC GENERATING.

| | | | | | | | |
|---|--|------------------------------------|-----------------------------|--|-------------------------------------|-----------------------------|----------------------|
| <div>UNLESS OTHERWISE SPECIFIED, DIMENSIONS IN MILLIMETERS DO NOT SCALE DRAWING</div> <div>NOTICE OF PROPRIETARY INFORMATION INFORMATION CONTAINED HEREIN IS PROPRIETARY AND IS PROPERTY OF ITRONIX CORP. WHERE FURNISHED WITH A PROPOSAL, THE RECIPIENT SHALL USE IT SOLELY TO EVALUATE THE PROPOSAL, WHERE FURNISHED TO A CUSTOMER IT SHALL BE USED SOLELY FOR PURPOSES OF INSPECTION INSTALLATION, OR MAINTENANCE. WHERE FURNISHED TO A SUPPLIER, IT SHALL BE USED SOLELY IN THE PERFORMANCE OF THE WORK CONTRACTED FOR BY THIS COMPANY. THE INFORMATION SHALL NOT BE USED OR DISCLOSED BY THE RECIPIENT FOR ANY OTHER PURPOSE WHATSOEVER.</div> | <div>.TOL. EXCEPT AS NOTED X ± 0.5 MM X.X ± 0.25 MM X.XX ± 0.125 MM ANG. = 1.0°</div> | <div>DRAFTER K. MORDEN</div> | <div>DATE 9-20-06</div> | <div>DESCRIPTION LBL, IX100X, USI-WLBT</div> | | | |
| | <div>CHECKER</div> | <div>DATE</div> | | | | | |
| | <div>THIRD ANGLE PROJECTION</div> <div></div> | <div>ELEC. ENG</div> | <div>DATE</div> | <div>SIZE B</div> | <div>DWG. NO 26-0907-001R</div> | | |
| | <div>ITRONIX 12825 E MIRABEAU PARKWAY SPokane VALLEY, WA 99216-1464</div> | <div>MECH. ENG K. MORDEN</div> | <div>DATE 9-20-06</div> | <div>SCALE 4.000</div> | | <div>SHEET 1 OF 1</div> | <div>REV 1</div> |
| | | <div>MFG. ENG</div> | <div>DATE</div> | | | | |





- NOTES: (UNLESS OTHERWISE SPECIFIED).
- 1. MATERIAL: .007" THK. 8B35 POLYCARBONATE W/.005" THK. 3M 468 ADHESIVE.
 - 2. MATERIAL TO BE UL AND CSA APPROVED.
 - 3. PRINTING: SILVER BACKGROUND W/BLACK TEXT.
 - 4. PART(S) SHIPPED TO ITRONIX SHALL BE PACKAGED FOR SHIPMENT AND/OR STORAGE IN A CLEAN PROTECTIVE CONTAINER PER ITRONIX PACKAGING AND SHIPPING SPEC. QE3-002. IF A BAG IS USED IT MUST BE NON-STATIC GENERATING.



SCALE 1.000

| | | | | | | | |
|---|--|--|--|----------------------------|--|---|--|
| UNLESS OTHERWISE SPECIFIED, DIMENSIONS IN MILLIMETERS DO NOT SCALE DRAWING | | .TOL. EXCEPT AS NOTED X ± 0.5 MM X.X ± 0.25 MM X.XX ± 0.125 MM ANG. = 1.0° | | THIRD ANGLE PROJECTION | | ITRONIX S.801 STEVENS, P.O. BOX 179 SPOKANE, WA 99210 | |
| NOTICE OF PROPRIETARY INFORMATION INFORMATION CONTAINED HEREIN IS PROPRIETARY AND IS PROPERTY OF ITRONIX CORP. WHERE FURNISHED WITH A PROPOSAL, THE RECIPIENT SHALL USE IT SOLELY TO EVALUATE THE PROPOSAL, WHERE FURNISHED TO A CUSTOMER IT SHALL BE USED SOLELY FOR PURPOSES OF INSPECTION INSTALLATION, OR MAINTENANCE. WHERE FURNISHED TO A SUPPLIER, IT SHALL BE USED SOLELY IN THE PERFORMANCE OF THE WORK CONTRACTED FOR BY THIS COMPANY. THE INFORMATION SHALL NOT BE USED OR DISCLOSED BY THE RECIPIENT FOR ANY OTHER PURPOSE WHATSOEVER. | | ELEC. ENG | | MECH. ENG | | MFG. ENG | |
| DRAFTER J. DERTING | | DATE 4-15-04 | | CHECKER | | DATE | |
| ELEC. ENG | | DATE | | MECH. ENG | | DATE | |
| MFG. ENG | | DATE | | ELEC. ENG | | DATE | |
| - | | A | | 3526 | | JMD | |
| ZONE | | REV. | | ECO | | BY | |
| DESCRIPTION OF CHANGE | | APP. | | DATE | | RELEASE | |
| DRAFT | | DATE | | DESCRIPTION | | DATE | |
| J. DERTING | | 4-15-04 | | LABEL, FCC, PRT 15, IX100X | | DATE | |
| CHECKER | | DATE | | SIZE | | DWG. NO | |
| ELEC. ENG | | DATE | | B | | 26-0593-001 | |
| MECH. ENG | | DATE | | SCALE | | SHEET | |
| MFG. ENG | | DATE | | 2.000 | | 1 OF 1 | |
| - | | A | | 3526 | | JMD | |
| ZONE | | REV. | | ECO | | BY | |
| DESCRIPTION OF CHANGE | | APP. | | DATE | | RELEASE | |
| DRAFT | | DATE | | DESCRIPTION | | DATE | |
| J. DERTING | | 4-15-04 | | LABEL, FCC, PRT 15, IX100X | | DATE | |
| CHECKER | | DATE | | SIZE | | DWG. NO | |
| ELEC. ENG | | DATE | | B | | 26-0593-001 | |
| MECH. ENG | | DATE | | SCALE | | SHEET | |
| MFG. ENG | | DATE | | 2.000 | | 1 OF 1 | |
| - | | A | | 3526 | | JMD | |
| ZONE | | REV. | | ECO | | BY | |
| DESCRIPTION OF CHANGE | | APP. | | DATE | | RELEASE | |
| DRAFT | | DATE | | DESCRIPTION | | DATE | |
| J. DERTING | | 4-15-04 | | LABEL, FCC, PRT 15, IX100X | | DATE | |
| CHECKER | | DATE | | SIZE | | DWG. NO | |
| ELEC. ENG | | DATE | | B | | 26-0593-001 | |
| MECH. ENG | | DATE | | SCALE | | SHEET | |
| MFG. ENG | | DATE | | 2.000 | | 1 OF 1 | |
| - | | A | | 3526 | | JMD | |
| ZONE | | REV. | | ECO | | BY | |
| DESCRIPTION OF CHANGE | | APP. | | DATE | | RELEASE | |
| DRAFT | | DATE | | DESCRIPTION | | DATE | |
| J. DERTING | | 4-15-04 | | LABEL, FCC, PRT 15, IX100X | | DATE | |
| CHECKER | | DATE | | SIZE | | DWG. NO | |
| ELEC. ENG | | DATE | | B | | 26-0593-001 | |
| MECH. ENG | | DATE | | SCALE | | SHEET | |
| MFG. ENG | | DATE | | 2.000 | | 1 OF 1 | |
| - | | A | | 3526 | | JMD | |
| ZONE | | REV. | | ECO | | BY | |
| DESCRIPTION OF CHANGE | | APP. | | DATE | | RELEASE | |
| DRAFT | | DATE | | DESCRIPTION | | DATE | |
| J. DERTING | | 4-15-04 | | LABEL, FCC, PRT 15, IX100X | | DATE | |
| CHECKER | | DATE | | SIZE | | DWG. NO | |
| ELEC. ENG | | DATE | | B | | 26-0593-001 | |
| MECH. ENG | | DATE | | SCALE | | SHEET | |
| MFG. ENG | | DATE | | 2.000 | | 1 OF 1 | |
| - | | A | | 3526 | | JMD | |
| ZONE | | REV. | | ECO | | BY | |
| DESCRIPTION OF CHANGE | | APP. | | DATE | | RELEASE | |
| DRAFT | | DATE | | DESCRIPTION | | DATE | |
| J. DERTING | | 4-15-04 | | LABEL, FCC, PRT 15, IX100X | | DATE | |
| CHECKER | | DATE | | SIZE | | DWG. NO | |
| ELEC. ENG | | DATE | | B | | 26-0593-001 | |
| MECH. ENG | | DATE | | SCALE | | SHEET | |
| MFG. ENG | | DATE | | 2.000 | | 1 OF 1 | |
| - | | A | | 3526 | | JMD | |
| ZONE | | REV. | | ECO | | BY | |
| DESCRIPTION OF CHANGE | | APP. | | DATE | | RELEASE | |
| DRAFT | | DATE | | DESCRIPTION | | DATE | |
| J. DERTING | | 4-15-04 | | LABEL, FCC, PRT 15, IX100X | | DATE | |
| CHECKER | | DATE | | SIZE | | DWG. NO | |
| ELEC. ENG | | DATE | | B | | 26-0593-001 | |
| MECH. ENG | | DATE | | SCALE | | SHEET | |
| MFG. ENG | | DATE | | 2.000 | | 1 OF 1 | |
| - | | A | | 3526 | | JMD | |
| ZONE | | REV. | | ECO | | BY | |
| DESCRIPTION OF CHANGE | | APP. | | DATE | | RELEASE | |
| DRAFT | | DATE | | DESCRIPTION | | DATE | |
| J. DERTING | | 4-15-04 | | LABEL, FCC, PRT 15, IX100X | | DATE | |
| CHECKER | | DATE | | SIZE | | DWG. NO | |
| ELEC. ENG | | DATE | | B | | 26-0593-001 | |
| MECH. ENG | | DATE | | SCALE | | SHEET | |
| MFG. ENG | | DATE | | 2.000 | | 1 OF 1 | |
| - | | A | | 3526 | | JMD | |
| ZONE | | REV. | | ECO | | BY | |
| DESCRIPTION OF CHANGE | | APP. | | DATE | | RELEASE | |
| DRAFT | | DATE | | DESCRIPTION | | DATE | |
| J. DERTING | | 4-15-04 | | LABEL, FCC, PRT 15, IX100X | | DATE | |
| CHECKER | | DATE | | SIZE | | DWG. NO | |
| ELEC. ENG | | DATE | | B | | 26-0593-001 | |
| MECH. ENG | | DATE | | SCALE | | SHEET | |
| MFG. ENG | | DATE | | 2.000 | | 1 OF 1 | |
| - | | A | | 3526 | | JMD | |
| ZONE | | REV. | | ECO | | BY | |
| DESCRIPTION OF CHANGE | | APP. | | DATE | | RELEASE | |
| DRAFT | | DATE | | DESCRIPTION | | DATE | |
| J. DERTING | | 4-15-04 | | LABEL, FCC, PRT 15, IX100X | | DATE | |
| CHECKER | | DATE | | SIZE | | DWG. NO | |
| ELEC. ENG | | DATE | | B | | 26-0593-001 | |
| MECH. ENG | | DATE | | SCALE | | SHEET | |
| MFG. ENG | | DATE | | 2.000 | | 1 OF 1 | |
| - | | A | | 3526 | | JMD | |
| ZONE | | REV. | | ECO | | BY | |
| DESCRIPTION OF CHANGE | | APP. | | DATE | | RELEASE | |
| DRAFT | | DATE | | DESCRIPTION | | DATE | |
| J. DERTING | | 4-15-04 | | LABEL, FCC, PRT 15, IX100X | | DATE | |
| CHECKER | | DATE | | SIZE | | DWG. NO | |
| ELEC. ENG | | DATE | | B | | 26-0593-001 | |
| MECH. ENG | | DATE | | SCALE | | SHEET | |
| MFG. ENG | | DATE | | 2.000 | | 1 OF 1 | |
| - | | A | | 3526 | | JMD | |
| ZONE | | REV. | | ECO | | BY | |
| DESCRIPTION OF CHANGE | | APP. | | DATE | | RELEASE | |
| DRAFT | | DATE | | DESCRIPTION | | DATE | |
| J. DERTING | | 4-15-04 | | LABEL, FCC, PRT 15, IX100X | | DATE | |
| CHECKER | | DATE | | SIZE | | DWG. NO | |
| ELEC. ENG | | DATE | | B | | 26-0593-001 | |
| MECH. ENG | | DATE | | SCALE | | SHEET | |
| MFG. ENG | | DATE | | 2.000 | | 1 OF 1 | |
| - | | A | | 3526 | | JMD | |
| ZONE | | REV. | | ECO | | BY | |
| DESCRIPTION OF CHANGE | | APP. | | DATE | | RELEASE | |
| DRAFT | | DATE | | DESCRIPTION | | DATE | |
| J. DERTING | | 4-15-04 | | LABEL, FCC, PRT 15, IX100X | | DATE | |
| CHECKER | | DATE | | SIZE | | DWG. NO | |
| ELEC. ENG | | DATE | | B | | 26-0593-001 | |
| MECH. ENG | | DATE | | SCALE | | SHEET | |
| MFG. ENG | | DATE | | 2.000 | | 1 OF 1 | |
| - | | A | | 3526 | | JMD | |
| ZONE | | REV. | | ECO | | BY | |
| DESCRIPTION OF CHANGE | | APP. | | DATE | | RELEASE | |
| DRAFT | | DATE | | DESCRIPTION | | DATE | |
| J. DERTING | | 4-15-04 | | LABEL, FCC, PRT 15, IX100X | | DATE | |
| CHECKER | | DATE | | SIZE | | DWG. NO | |
| ELEC. ENG | | DATE | | B | | 26-0593-001 | |
| MECH. ENG | | DATE | | SCALE | | SHEET | |
| MFG. ENG | | DATE | | 2.000 | | 1 OF 1 | |
| - | | A | | 3526 | | JMD | |
| ZONE | | REV. | | ECO | | BY | |
| DESCRIPTION OF CHANGE | | APP. | | DATE | | RELEASE | |
| DRAFT | | DATE | | DESCRIPTION | | DATE | |
| J. DERTING | | 4-15-04 | | LABEL, FCC, PRT 15, IX100X | | DATE | |
| CHECKER | | DATE | | SIZE | | DWG. NO | |
| ELEC. ENG | | DATE | | B | | 26-0593-001 | |
| MECH. ENG | | DATE | | SCALE | | SHEET | |
| MFG. ENG | | DATE | | 2.000 | | 1 OF 1 | |
| - | | A | | 3526 | | JMD | |
| ZONE | | REV. | | ECO | | BY | |
| DESCRIPTION OF CHANGE | | APP. | | DATE | | RELEASE | |
| DRAFT | | DATE | | DESCRIPTION | | DATE | |
| J. DERTING | | 4-15-04 | | LABEL, FCC, PRT 15, IX100X | | DATE | |
| CHECKER | | DATE | | SIZE | | DWG. NO | |
| ELEC. ENG | | DATE | | B | | 26-0593-001 | |
| MECH. ENG | | DATE | | SCALE | | SHEET | |
| MFG. ENG | | DATE | | 2.000 | | 1 OF 1 | |
| - | | A | | 3526 | | JMD | |
| ZONE | | REV. | | ECO | | BY | |
| DESCRIPTION OF CHANGE | | APP. | | DATE | | RELEASE | |
| DRAFT | | DATE | | DESCRIPTION | | DATE | |
| J. DERTING | | 4-15-04 | | LABEL, FCC, PRT 15, IX100X | | DATE | |
| CHECKER | | DATE | | SIZE | | DWG. NO | |
| ELEC. ENG | | DATE | | B | | 26-0593-001 | |
| MECH. ENG | | DATE | | SCALE | | SHEET | |
| MFG. ENG | | DATE | | 2.000 | | 1 OF 1 | |
| - | | A | | 3526 | | JMD | |
| ZONE | | REV. | | ECO | | BY | |
| DESCRIPTION OF CHANGE | | APP. | | DATE | | RELEASE | |
| DRAFT | | DATE | | DESCRIPTION | | DATE | |
| J. DERTING | | 4-15-04 | | LABEL, FCC, PRT 15, IX100X | | DATE | |
| CHECKER | | DATE | | SIZE | | DWG. NO | |
| ELEC. ENG | | DATE | | B | | 26-0593-001 | |
| MECH. ENG | | DATE | | SCALE | | SHEET | |
| MFG. ENG | | DATE | | 2.000 | | 1 OF 1 | |
| - | | A | | 3526 | | JMD | |
| ZONE | | REV. | | ECO | | BY | |
| DESCRIPTION OF CHANGE | | APP. | | DATE | | RELEASE | |
| DRAFT | | DATE | | DESCRIPTION | | DATE | |
| J. DERTING | | 4-15-04 | | LABEL, FCC, PRT 15, IX100X | | DATE | |
| CHECKER | | DATE | | SIZE | | DWG. NO | |
| ELEC. ENG | | DATE | | B | | 26-0593-001 | |
| MECH. ENG | | DATE | | SCALE | | SHEET | |
| MFG. ENG | | DATE | | 2.000 | | 1 OF 1 | |
| - | | A | | 3526 | | JMD | |
| ZONE | | REV. | | ECO | | BY | |
| DESCRIPTION OF CHANGE | | APP. | | DATE | | RELEASE | |
| DRAFT | | DATE | | DESCRIPTION | | DATE | |
| J. DERTING | | 4-15-04 | | LABEL, FCC, PRT 15, IX100X | | DATE | |
| CHECKER | | DATE | | SIZE | | DWG. NO | |
| ELEC. ENG | | DATE | | B | | 26-0593-001 | |
| MECH. ENG | | DATE | | SCALE | | SHEET | |
| MFG. ENG | | DATE | | 2.000 | | 1 OF 1 | |
| - | | A | | 3526 | | JMD | |
| ZONE | | REV. | | ECO | | BY | |
| DESCRIPTION OF CHANGE | | APP. | | DATE | | RELEASE | |
| DRAFT | | DATE | | DESCRIPTION | | DATE | |
| J. DERTING | | 4-15-04 | | LABEL, FCC, PRT 15, IX100X | | DATE | |
| CHECKER | | DATE | | SIZE | | DWG. NO | |
| ELEC. ENG | | DATE | | B | | 26-0593-001 | |
| MECH. ENG | | DATE | | SCALE | | SHEET | |
| MFG. ENG | | DATE | | 2.000 | | 1 OF 1 | |
| - | | A | | 3526 | | JMD | |
| ZONE | | REV. | | ECO | | BY | |
| DESCRIPTION OF CHANGE | | APP. | | DATE | | RELEASE | |
| DRAFT | | DATE | | DESCRIPTION | | DATE | |
| J. DERTING | | 4-15-04 | | LABEL, FCC, PRT 15, IX100X | | DATE | |
| CHECKER | | DATE | | SIZE | | DWG. NO | |
| ELEC. ENG | | DATE | | B | | 26-0593-001 | |
| MECH. ENG | | DATE | | SCALE | | SHEET | |
| MFG. ENG | | DATE | | 2.000 | | 1 OF 1 | |
| - | | A | | 3526 | | JMD | |
| ZONE | | REV. | | ECO | | BY | |
| DESCRIPTION OF CHANGE | | APP. | | DATE | | RELEASE | |
| DRAFT | | DATE | | DESCRIPTION | | DATE | |
| J. DERTING | | 4-15-04 | | LABEL, FCC, PRT 15, IX100X | | DATE | |
| CHECKER | | DATE | | SIZE | | DWG. NO | |
| ELEC. ENG | | DATE | | B | | 26-0593-001 | |
| MECH. ENG | | DATE | | SCALE | | SHEET | |
| MFG. ENG | | DATE | | 2.000 | | 1 OF 1 | |
| - | | A | | 3526 | | JMD | |
| ZONE | | REV. | | ECO | | BY | |
| DESCRIPTION OF CHANGE | | APP. | | DATE | | RELEASE | |
| DRAFT | | DATE | | DESCRIPTION | | DATE | |
| J. DERTING | | 4-15-04 | | LABEL, FCC, PRT 15, IX100X | | DATE | |
| CHECKER | | DATE | | SIZE | | DWG. NO | |
| ELEC. ENG | | DATE | | B | | 26-0593-001 | |
| MECH. ENG | | DATE | | SCALE | | SHEET | |
| MFG. ENG | | DATE | | 2.000 | | 1 OF 1 | |
| - | | A | | 3526 | | JMD | |
| ZONE | | REV. | | ECO | | BY | |
| DESCRIPTION OF CHANGE | | APP. | | DATE | | RELEASE | |
| DRAFT | | DATE | | DESCRIPTION | | DATE | |
| J. DERTING | | 4-15-04 | | LABEL, FCC, PRT 15, IX100X | | DATE | |
| CHECKER | | DATE | | SIZE | | DWG. NO | |
| ELEC. ENG | | DATE | | B | | 26-0593-001 | |
| MECH. ENG | | DATE | | SCALE | | SHEET | |
| MFG. ENG | | DATE | | 2.000 | | 1 OF 1 | |
| - | | A | | 3526 | | JMD | |
| ZONE | | REV. | | ECO | | BY | |
| DESCRIPTION OF CHANGE | | APP. | | DATE | | RELEASE | |
| DRAFT | | DATE | | DESCRIPTION | | DATE | |
| J. DERTING | | 4-15-04 | | LABEL, FCC, PRT 15, IX100X | | DATE | |
| CHECKER | | DATE | | SIZE | | DWG. NO | |
| ELEC. ENG | | DATE | | B | | 26-0593-001 | |
| MECH. ENG | | DATE | | SCALE | | SHEET | |
| MFG. ENG | | DATE | | 2.000 | | 1 OF 1 | |
| - | | A | | 3526 | | JMD | |
| ZONE | | REV. | | ECO | | BY | |
| DESCRIPTION OF CHANGE | | APP. | | DATE | | RELEASE | |
| DRAFT | | DATE | | DESCRIPTION | | DATE | |
| J. DERTING | | 4-15-04 | | LABEL, FCC, PRT 15, IX100X | | DATE | |
| CHECKER | | DATE | | SIZE | | DWG. NO | |
| ELEC. ENG | | DATE | | B | | 26-0593-001 | |
| MECH. ENG | | DATE | | SCALE | | SHEET | |
| MFG. ENG | | DATE | | 2.000 | | 1 OF 1 | |
| - | | A | | 3526 | | JMD | |
| ZONE | | REV. | | | | | |