

Go to www.vtechphones.com to register your product for enhanced warranty support and the latest Vtech product news.



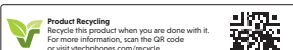
vtech®
Quick start guide

For more support information:



TECHNICAL SPECIFICATIONS

Frequency control	Crystal controlled PLL synthesizer
Transmit frequency	Baby unit: 2405 - 2475 MHz Parent unit: 2405 - 2475 MHz
Channels	32
LCD	5" Color LCD (853 x 480 pixels)
Nominal effective range	Maximum power allowed by FCC and IC. Actual operating range may vary according to environmental conditions at the time of use.
Power requirements	Parent unit: 3.7V Lithium-ion Polymer battery Baby unit power adapter: Output: 5V DC, 1A Parent unit power adapter: Output: 5V DC, 1A



Specifications are subject to change without notice.
© 2023 Vtech Communications, Inc. All rights reserved.
Vtech, VM5263-2, Q950, IC

BASIC OPERATION - PARENT UNIT

Adjust speaker volume

Press **-VOL / VOL+** to adjust your parent unit speaker volume. It determines the volume of sound transmitted from your baby unit.

Zoom

Press **Q** or **Q** to zoom in or out.

Turn off the screen

Press **LED ON/OFF** to switch off the screen. You can still hear sound from the baby unit.

Talk to your baby unit

- Press and hold the **TALK** key.
- When the **TALK LED** turns on, speak to your parent unit. Your voice is transmitted to the baby unit.
- When finished talking, release the **TALK** key.

Tip

Press any keys on the parent unit to turn on the screen again.

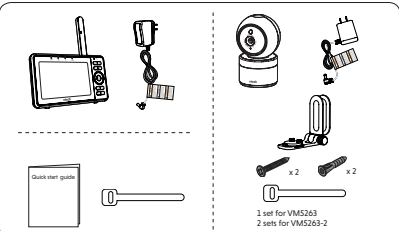
IMPORTANT SAFETY INSTRUCTIONS

- The applied template is located at the bottom of the baby unit's base.
- When using your equipment, basic safety precautions should always be followed to reduce the risk of fire, electric shock and injury, including the following:
- Follow all warnings and instructions marked on the product.
 - Follow all safety instructions.
 - CAUTION:** Do not install the baby unit at a height above 6.5 feet (2 meters).
 - This product is intended as an aid. It is not a substitute for electronic devices, such as baby monitors, cordless telephones, etc. Do not use this product near water, for example, near to a bath, sink, swimming pool or shower.
 - CAUTION:** Use only the battery provided (if applicable). These may be a risk of explosion if a wrong type of battery is used for the parent unit. The battery cannot be subjected to high or low extreme temperature and low air pressure at high altitude during use, storage or transport. Exposure of battery to fire or a hot oven, mechanically crushing or cutting the battery can result in an explosion. Leaving the battery in an extremely high temperature surrounding environment can result in an explosion or the leakage of flammable liquid or gas. Battery subjected to extremely low air pressure may result in an explosion or the leakage of flammable liquid or gas. Dispose of used battery according to the information in the **RECALL** card.
 - Use only the power adapters included with this product. Using unauthorized power polarity or voltage can seriously damage the product.
 - Power adapter information:
Parent unit inductor: 5V DC, 1A
Vtech Telecommunications Ltd.
Model: VT081053200
Baby unit inductor: 5V DC, 1A
Vtech Telecommunications Ltd.
Model: VT081053200
 - Rechargeable battery information:
3.7V 3200mAh, 18.5Wh Lithium-ion battery
Dinex Great Power Energy Co., Ltd.
Model: GPRD000 5Ah-3.7V LSP
 - The power adapter is intended to be correctly oriented in a vertical or floor mount position. The prongs are not designed to hold the plug in place if it is plugged into a ceiling, under the table or cabinet outlet.
 - For portable equipment, the socket outlet (power adapter) should be installed near the equipment and should be easily accessible.
 - Keep the product from the wall outlet before cleaning.
 - Do not use liquid or aerosol cleaners. Use a damp cloth for cleaning.
 - Do not modify the power adapters or replace with other adapters, as this causes a hazardous situation.
 - Do not allow anything to rest on the power cords. Do not twist this product where the cords may be walked on or crimped.
 - This product should be operated only from the type of the type of power supply in your home. Consult your power company for the following label. If you are not sure of the type of power supply in your home, consult your power company for the following label.
 - Do not overload wall outlets or use an extension cord.
 - Do not place this product over a heat source, such as a radiator or other vulnerable surface.
 - This product must not be placed in any area where proper ventilation is not provided. Slots and openings in the back or bottom of the product are provided for ventilation. To protect them from overheating, these openings must not be blocked by placing the product on a soft surface such as a bed, sofa or rug. This product should never be placed near or over a radiator or heat source.
 - Never push objects of any kind into this product through the slots because they may touch dangerous voltage points or create a short circuit. Never spill liquid of any kind on the product.
 - To reduce the risk of electric shock, do not disassemble this product, but take it to an authorized service facility. Clean electronic devices, such as baby monitors, cordless telephones, etc. To protect your privacy, make sure the product has never been used before purchase, near the baby monitor periodically by pressing off and then powering on the unit, and power off the baby monitor if you are not intending to use it for some time.
 - Periodically examine all components for damage.
 - There is a very low risk of privacy loss when using certain electronic devices, such as baby monitors, cordless telephones, etc. To protect your privacy, make sure the product has never been used before purchase, near the baby monitor periodically by pressing off and then powering on the unit, and power off the baby monitor if you are not intending to use it for some time.
 - Children should be supervised to ensure that they do not play with the product.
 - The small parts of this monitor can be swallowed by babies or small children. Keep these parts out of reach of children.
 - The product is not intended for use by persons (including children) with reduced physical, sensory or mental capabilities, or lack of experience and knowledge, unless they have been given supervision or instruction concerning use of the appliance by a person responsible for their safety.

SAVE THESE INSTRUCTIONS

- Warnings:**
- Use and store the product at a temperature between 32°F (0°C) and 104°F (40°C).
 - Melting batteries can cause burn, fire or explosion hazards.
 - Batteries should not be exposed to excessive heat such as bright sunshine or fire.
 - Do not expose the product to extreme cold, heat or direct sunlight. Do not put the product close to a heating source.
 - Warning (Discharge Hazard)—Never leave a fully charged Li-ion battery unattended. Keep it out of the reach of children. Press the **LED ON/OFF** button to turn off the power.
 - Never place the camera unit(s) inside the baby's crib or playpen. Never cover the camera unit(s) or parent unit with anything such as a towel or a blanket.
 - Other electronic products may cause interference with your camera unit. Try installing your camera unit as far away from these electronic devices as possible: wireless routers, radios, cellular telephones, intercoms, room monitors, televisions, personal computers, kitchen appliances and cordless telephones.
- Precautions for users of implanted cardiac pacemakers:**
- Cordless pacemakers (applies only to digital cordless devices): Wireless Technology Research, LLC (WTR), an independent research entity, led a multi-institutional evaluation of the interference between portable wireless devices and implanted cardiac pacemakers. This evaluation was supported by the U.S. Food and Drug Administration (FDA) recommendations to physicians that:
- Should keep wireless devices at least six inches from the pacemaker.
 - Should NOT place wireless devices directly over the pacemaker, such as in a breast pocket, when it is turned ON. WTR's evaluation did not identify any risk to bystanders with pacemakers from other persons using wireless devices.
- Electromagnetic fields (EMF)**
- This product complies with all standards regarding electromagnetic fields (EMF) if handled properly and according to the instructions in this user's manual. The product is safe to use based on scientific evidence available today.

WHAT'S IN THE BOX



1 CONNECT THE BABY MONITOR

The parent unit turns on automatically after connecting the power adapter to the power socket and the battery LED light illuminates for a few seconds, then turns off.

- NOTES**
- The rechargeable battery in the parent unit is built-in.
 - Use only the power adapters supplied with this product.
 - Make sure the baby monitor is not connected to a switch-controlled electric outlet.
 - Connect the power adapters in a vertical or floor mount position only. The adapters' prongs are not designed to hold the weight of baby monitor, so do not connect them to any ceiling, under-the-table, or cabinet outlets. Otherwise, the adapters may not properly connect to the outlets.
 - Make sure the parent unit, the baby units and the power adapter cords are out of reach of children.



1 CONNECT THE BABY MONITOR (CONT'D)

Charge the parent unit battery
When you have connected and turned the parent unit on, the battery charges automatically.

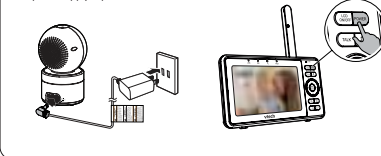
- NOTES**
- Before using the baby monitor for the first time, charge the parent unit battery for 12 hours. When the parent unit battery is fully charged, the battery icon segments are solid.
 - It takes longer to charge the battery when the parent unit is turned on. To shorten the charging time, turn the parent unit off while charging.
 - The standby time varies depending on the sensitivity level you set, your actual use and the age of the battery.

The battery icon indicates the battery status (see the following table).

BATTERY INDICATORS	BATTERY STATUS	ACTION
The screen displays and the LED light flashes.	The battery has very little power and can only be used for a short time.	Charge without interruption (about 30 minutes).
The battery icon segments are solid.	The battery is fully charged.	To keep the battery charged, connect the unit to AC power when in use.

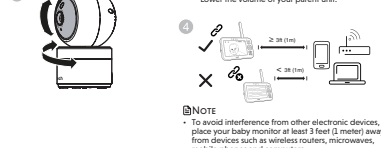
2 POWER ON OR OFF THE BABY MONITOR

- Connect the power adapter to the baby unit and a power supply to power on the unit. The night light turns on in green for 2 seconds, then turns off. Disconnect the baby unit from the power supply to power off.
- Press and hold **POWER** to power on or off your parent unit.



3 POSITIONING THE BABY MONITOR

- Position the baby monitor in a safe location, away from the baby's crib or playpen. The monitor should be at least 3 feet (1 meter) away from the baby.
 - Position the baby monitor in a safe location, away from the baby's crib or playpen. The monitor should be at least 3 feet (1 meter) away from the baby.
- CAUTION**
- The default volume of your parent unit is level 4, and the maximum volume is level 7. If you experience feedback noise from your baby monitor while positioning:
 - Make sure your baby unit and parent unit are more than 3 feet (1 meter) apart.
 - Lower the volume of your parent unit.

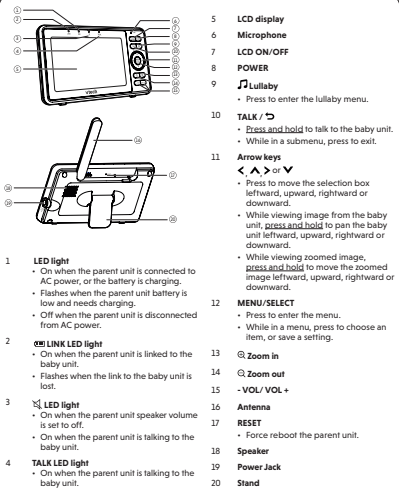


4 STATUS CHECK

Once you power on both your baby unit and parent unit, your parent unit displays image from the baby unit, and the **LINK LED** light turns on.



2 OVERVIEW - PARENT UNIT



PARENT UNIT ICONS

Main Menu

Monitoring mode (For VM5263-2 only)

- View baby unit 1 or 2 in **Single** mode.
- View both baby units in **Patrol** mode.
- View both baby units in **Split** screen.

Options

Parent unit settings

- Adjust parent unit screen brightness.
- Turn on/off **Low Battery Alert Tone**.
- Turn on/off **No Link Alert Tone**.
- Turn on/off dim mode.

Baby unit settings

- Adjust baby unit's speaker volume.

General settings

- Reset Settings.

Night light

- Turn on or turn off night light.
- Select a night light color.
- Adjust night light brightness.
- Set a night light timer.

Melodies and soothing sounds

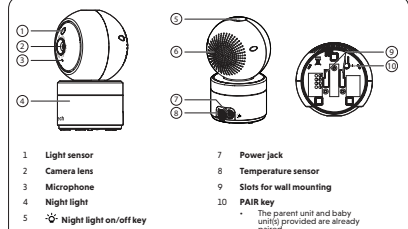
- Select to play all melodies, or play one of the five melodies and four soothing sounds.
- You can also set the timer to stop playing after 15, 30 or 60 minutes, or playing non-stop.

Alerts - Sound, motion and temperature

Select the sound and motion sensitivity level.

- Turn on/off sound and motion detection alerts.
- Select maximum and minimum temperature for alert range.
- Turn on/off temperature alert.
- Set the temperature format.

2 OVERVIEW - BABY UNIT



 Night Light Control Key
Single Tap: Turn on/off

- Depending on the surroundings and other interfering factors, for example, lighting, objects, colors and backgrounds, the image quality may vary. Adjust the baby unit angle or place the baby unit at a higher location to prevent glare and a blurred display.

You can also call our Customer Support at 1 (800) 595-9511 [in US] or 1 (800) 267-7377 [in Canada] for help.

1. Press **MENU** when the parent unit is idle.
2. Press **MENU** or **V** to enter  **Monitoring Mode** menu.
3. Press **<** or **>** to choose between **Single** , **Split** , and **Patrol**  monitor mode options. Press **SELECT** to confirm.

the battery. The CEC battery charging testing mode is activated while charging. Even if the parent unit is paired to baby units, the CEC battery charging testing mode is activated while it is powered off and charging.

et n'empêchez pas l'aération adéquate de l'appareil en le plaçant sur un lit, divan, tapis ou toute autre surface similaire.

controls, and installation or repair of systems outside the unit.

5. You can maximize your camera unit's viewing angles by tilting the wall mount bracket. Hold the camera unit, and then rotate the knob in anticlockwise direction. This will loosen the joint of the wall mount bracket. Tilt your camera unit up or down to adjust to your preferred angle. Then, rotate the knob in clockwise direction to tighten the joint and secure the angle.
- 