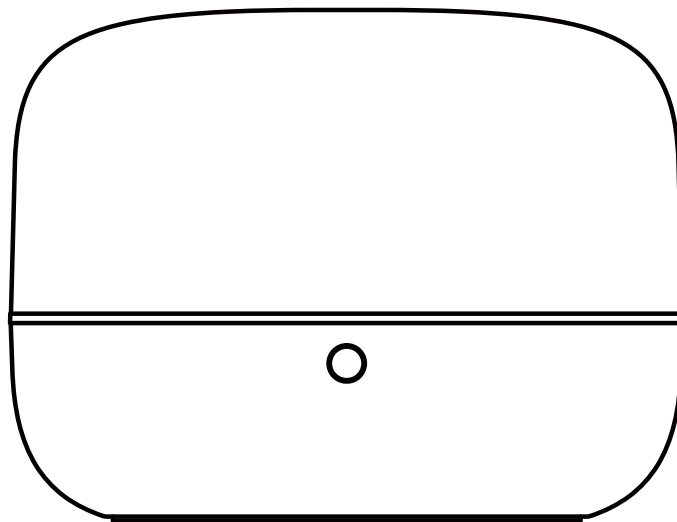


Infrared Remote Control Manual

(SRW-002 PRO)

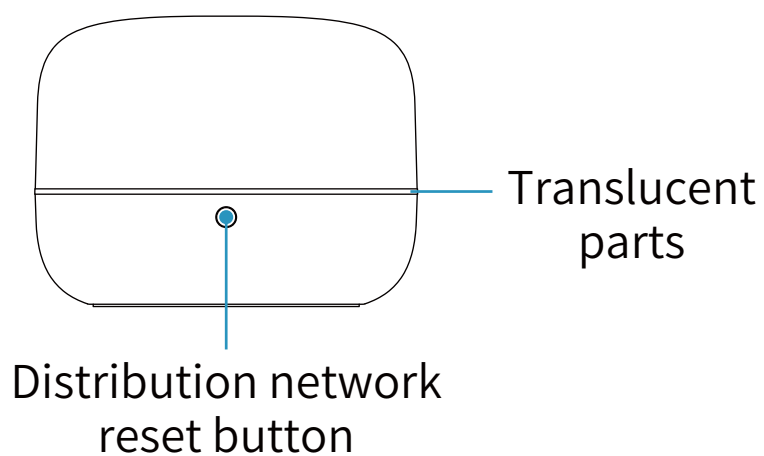


Please read this manual carefully and take
good care of it before using the product.

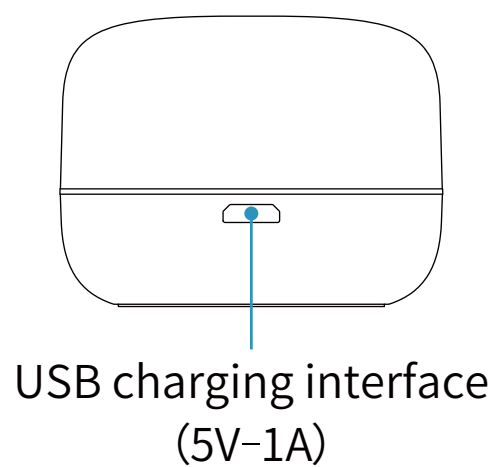
(V0.4)

Product appearance

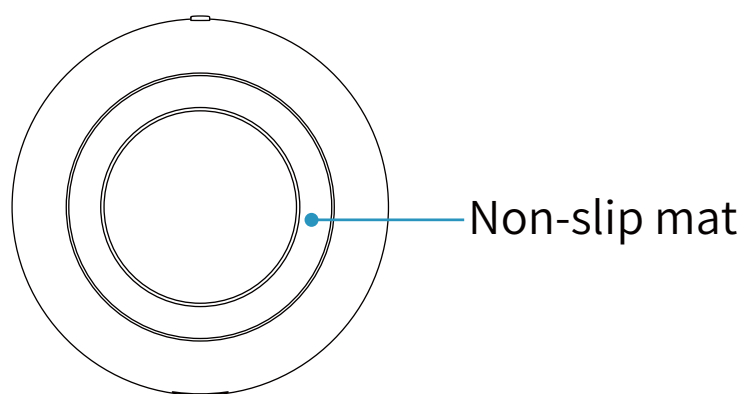
Upright view



Rear view



Bottom view



USB charging interface

SRW-002 Pro is an intelligent infrared remote control. After being connected to internet through Wi-Fi, you can control all kinds of electrical devices at home through intelligent speakers (Alexa/ Google Home/ TmallGenie) or mobile phone APP.

1) De-remote control

A small intelligent remote control can replace all other remote controls, freeing you from all kinds of bulky remote controls.

2) Voice-activated whole house

A gentleman should move his mouth but instead of his hands. Your intelligent life is all about voice manipulation of electrical appliances in the house.

3) 360 °infrared control

① The circular design of the internal infrared emitter ensures that your indoor 360 °electrical control has no dead angle and the remote control distance is 10 meters.

② The infrared control distance from point to point is 10 meters, which is enough to ensure the control of household appliances within a room.

4) Massive code library

Cloud matching, massive infrared code library, covering 99% of the mainstream household appliances at home and abroad.

5) Self-learning mode

Even if the individual product is not in the matching code base, the way of learning from each other through the remote control is enough for him to learn the control mode of the product.

6) Remote control

Whether you want to turn on the air conditioner in advance on the way home, or think of the appliances at home that you forget to turn off in the office, you can calmly turn on your phone for remote control.

7) Automatic control

Automatic control can be carried out according to external conditions, such as automatically turning on the air conditioner at home at 7 o'clock in the evening and automatically turning off the air conditioning at 5 o'clock in the morning, which can not only prevent catching cold at night, but also save electricity and environmental protection.

8) Ring indicator light

The beautiful ring indicator lights, blue, cyan and red, give you a clearer picture of the working status of the current equipment.

9) Round shape

With the black transparent skin-friendly material as the cover, it can not only reveal the infrared control signal without damage, but also have a lubricated skin feel, supplemented by modern round modeling design. It is a compact intelligent device with both intimacy and scientific and technological sense.

Operation guide

Download client

Search the APP Store for "Smart Life" or scan the QR code for instructions to download and install APP.

- Android users: you can download it by searching for "Smart Life" on Google Play.
- IOS users: you can download it by searching for "Smart Life" in IOS APP Store.

- If you download and use it for the first time, please click the "Register" button to register your account; if you already have an account, click "Login".



WiFi distribution network

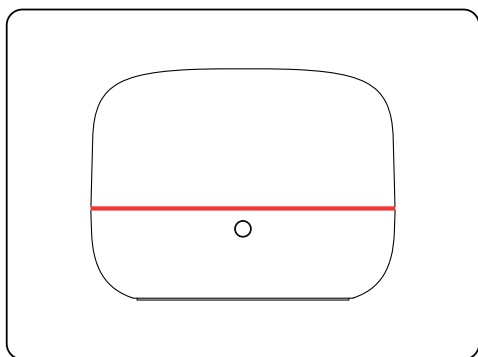
1. Distribution network requirements: before the equipment distributes the network, you need to turn on the mobile phone location, Wi-Fi (only 2.4G is supported), and allow the mobile phone to access the APP location permission.

2. Distribution network mode

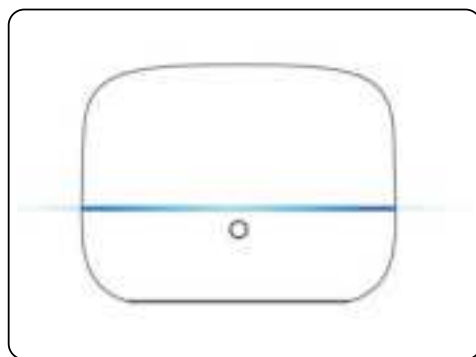
- ① Automatic discovery (APP automatic pop-up window)
- ② Add manually (hot spot distribution network)

Take "Automatic Discovery" as an example

1. The equipment is plugged in for the first time, the red light is on, and when the ring light turns into a blue background, a single cyan light circulates around quickly, and the equipment enters the state of distribution network.

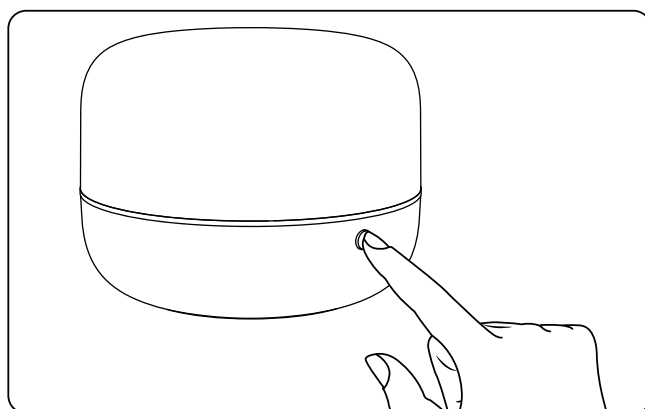


Plug in the power supply



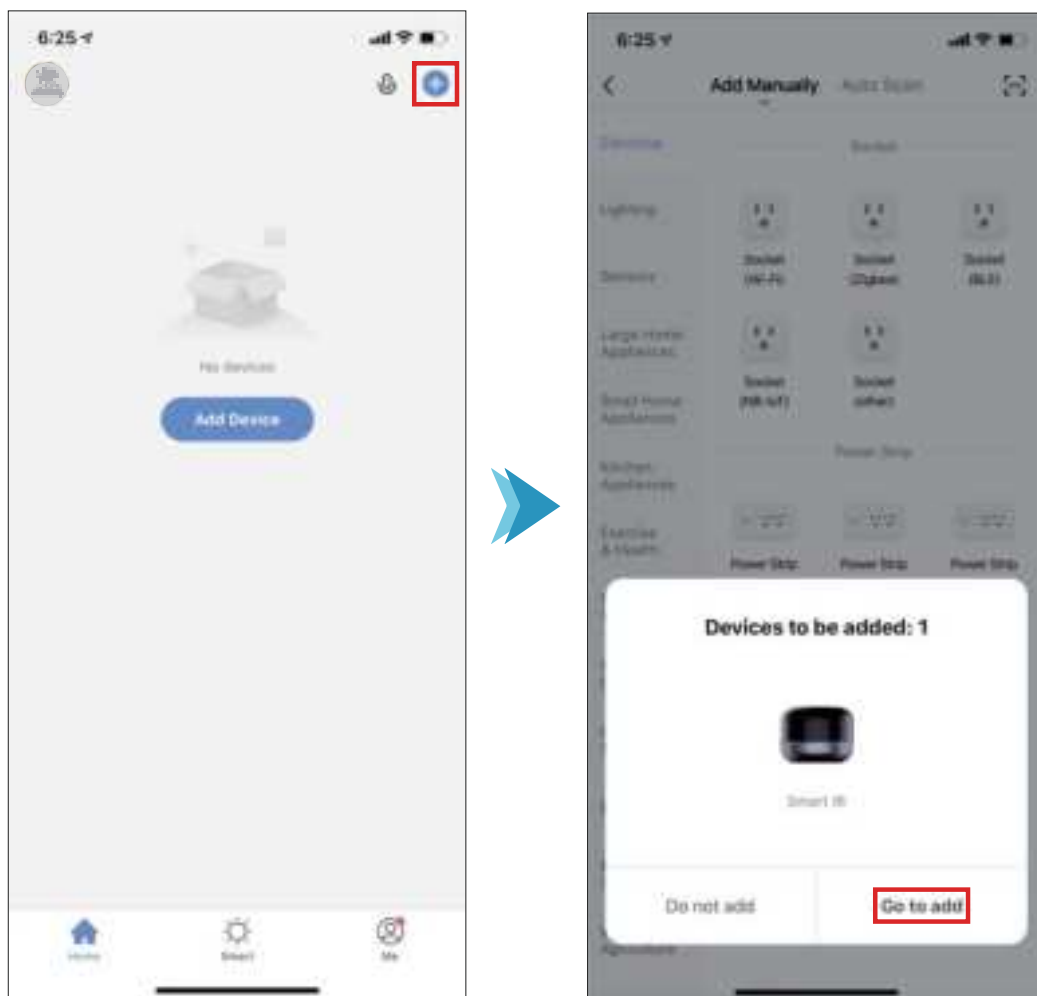
Distribution network status


- If you have not entered the distribution network for a long time, try pressing the 5S button for a long time to reset the device.

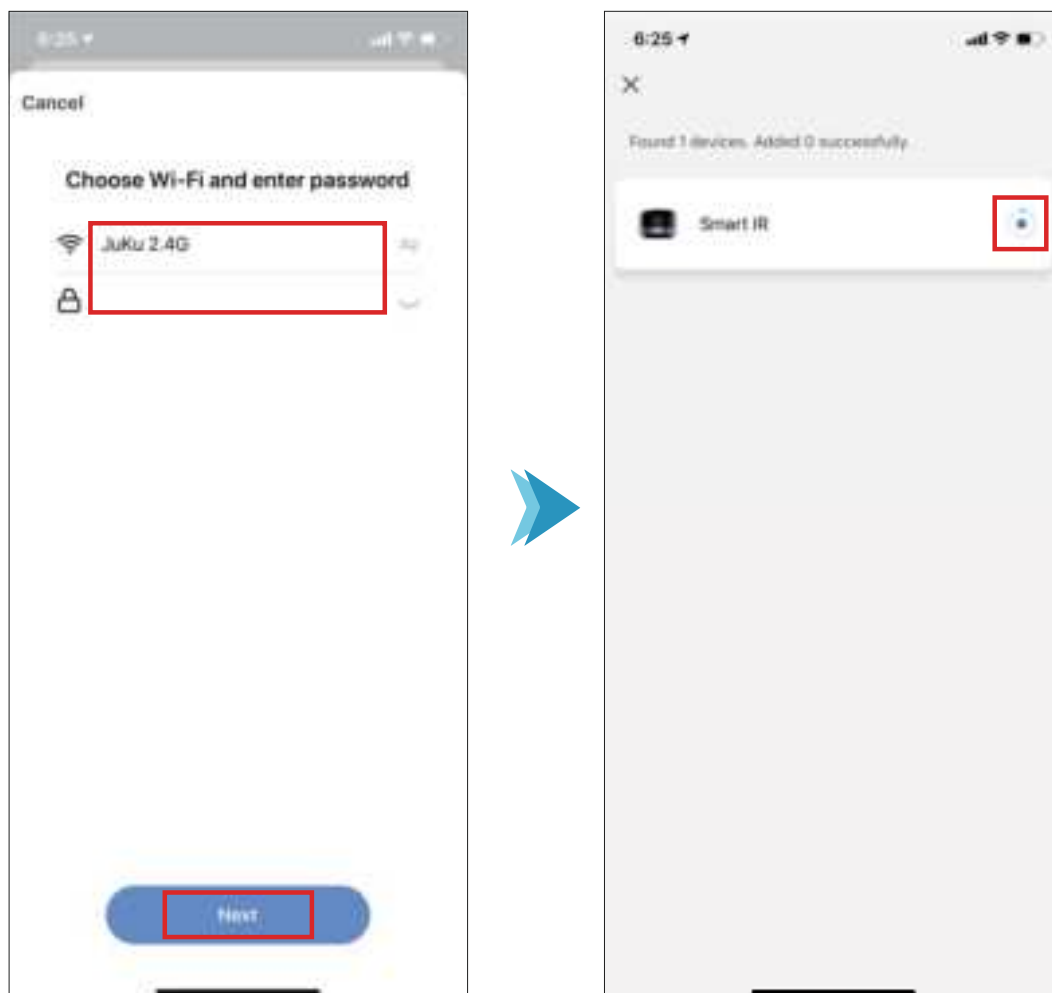


2. Open the APP on the phone and click "+" in the upper right corner of the screen;


3. APP will pop up a small window, "Devices to be added: 1" with the device icon displayed, click "Go to add";

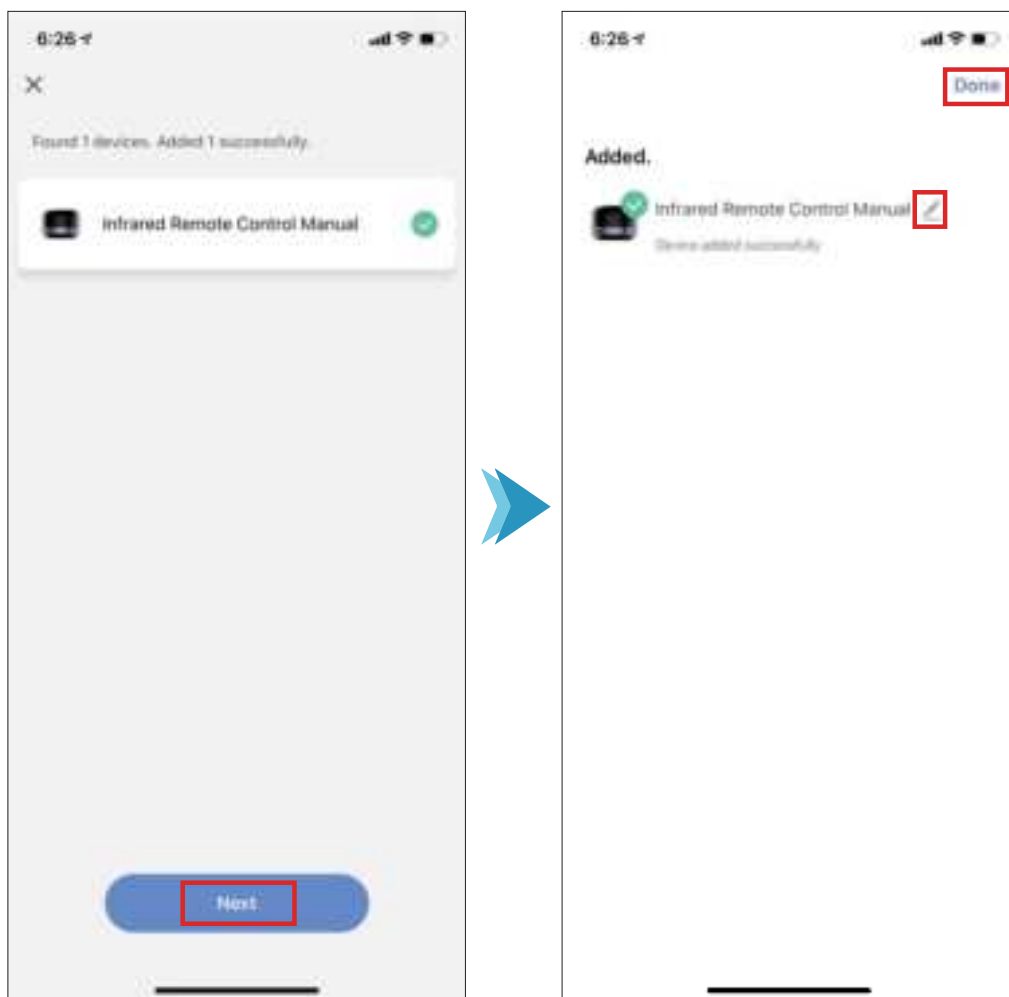


4. A small window will pop up in APP to prompt "Choose Wi-Fi and enter password". Please select the Wi-Fi hotspot at home (under the same 2.4G Wi-Fi network as your phone), enter the password for the Wi-Fi hotspot, and click "Next".
5. The connection status "  " will be displayed in the APP. (devices, mobile phones and home Wi-Fi hotspots are as close as possible)

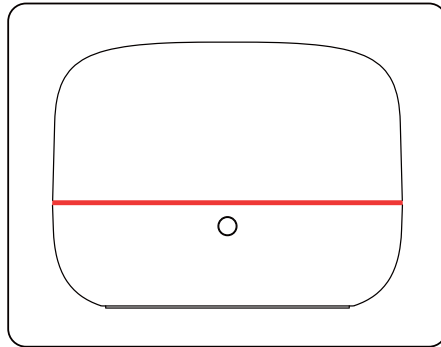


6. When the APP prompt is added successfully and the device ring light goes out, click "Next".

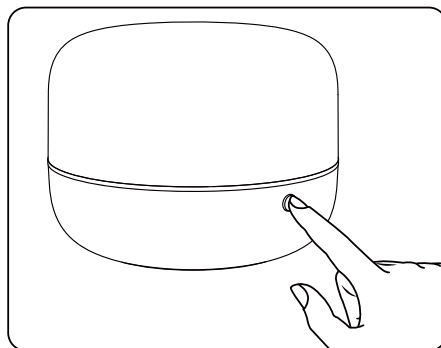
7. Click "  " to modify the device name, click "Done" in the upper right corner to end the distribution network.



- If the device ring light is red for a long time, check that the connected Wi-Fi is normal.



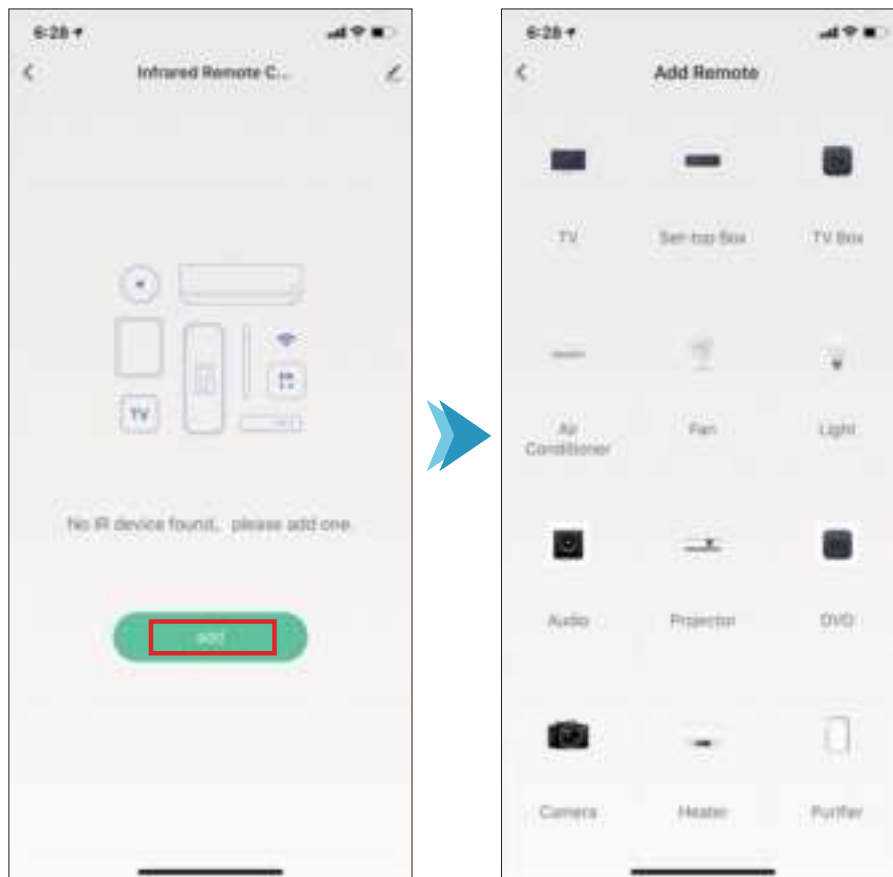
- If you need to re-enter the distribution network, when connected to the power supply, please press the button 5S for a long time to reset the device.



Add a remote control, take the air conditioner as an example:

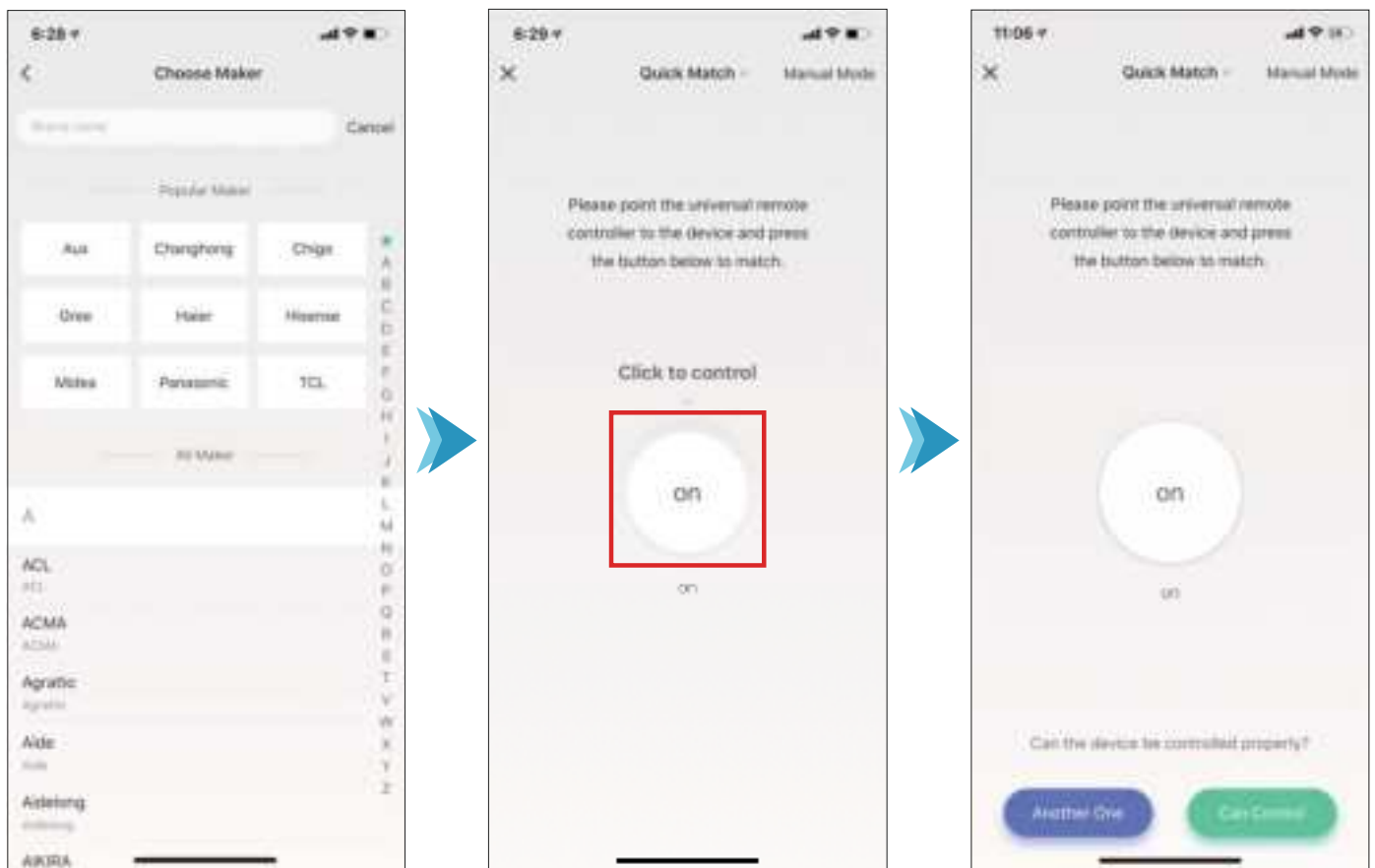
Mainstream device add operations, taking "Quick Match" as an example:

1. Without any remote control equipment, click the add button "add".
2. On the "Add Remote " page, select the device type.



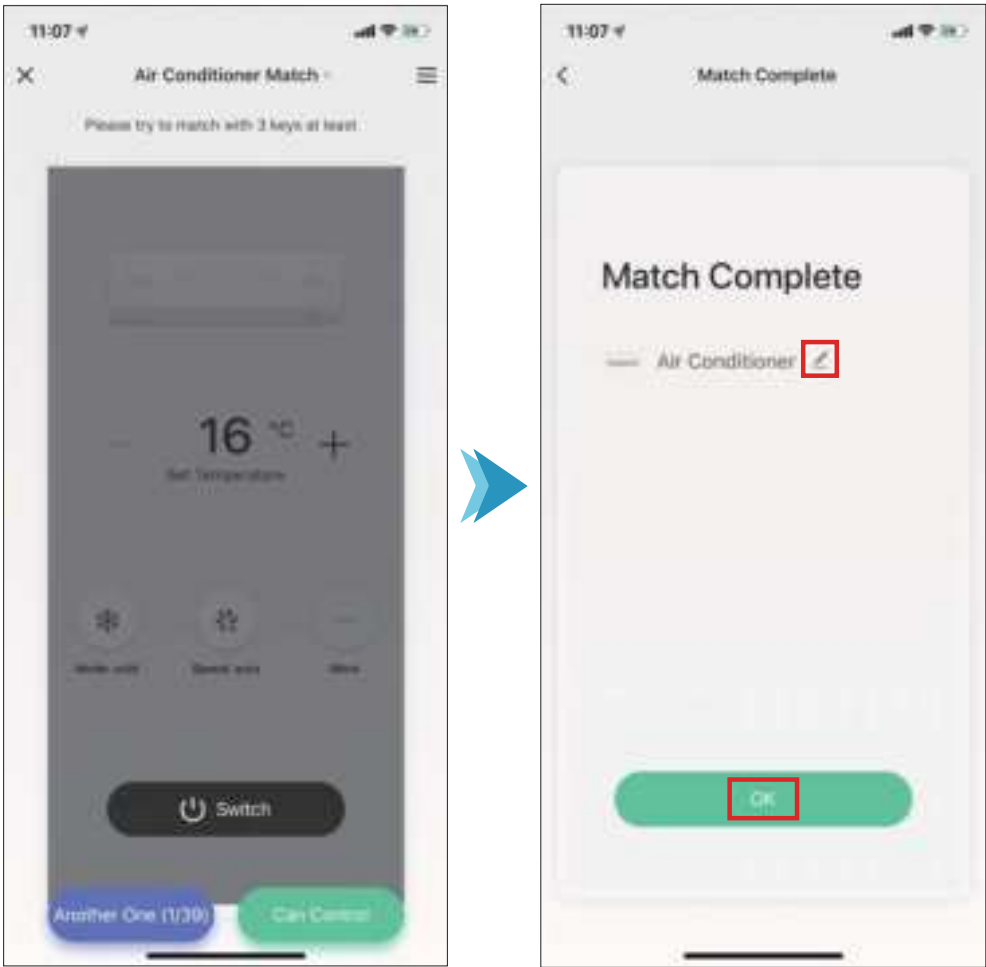
3. On the "Choose Maker" page, select the air conditioning brand.
4. On the "Quick Match" page, refer to the page prompt to perform 3 key matching operations.

Step: click the circular button on the page. If you can control the air conditioner correctly, please click "Can Control". Otherwise, please click "Another One" and repeat the previous operation.



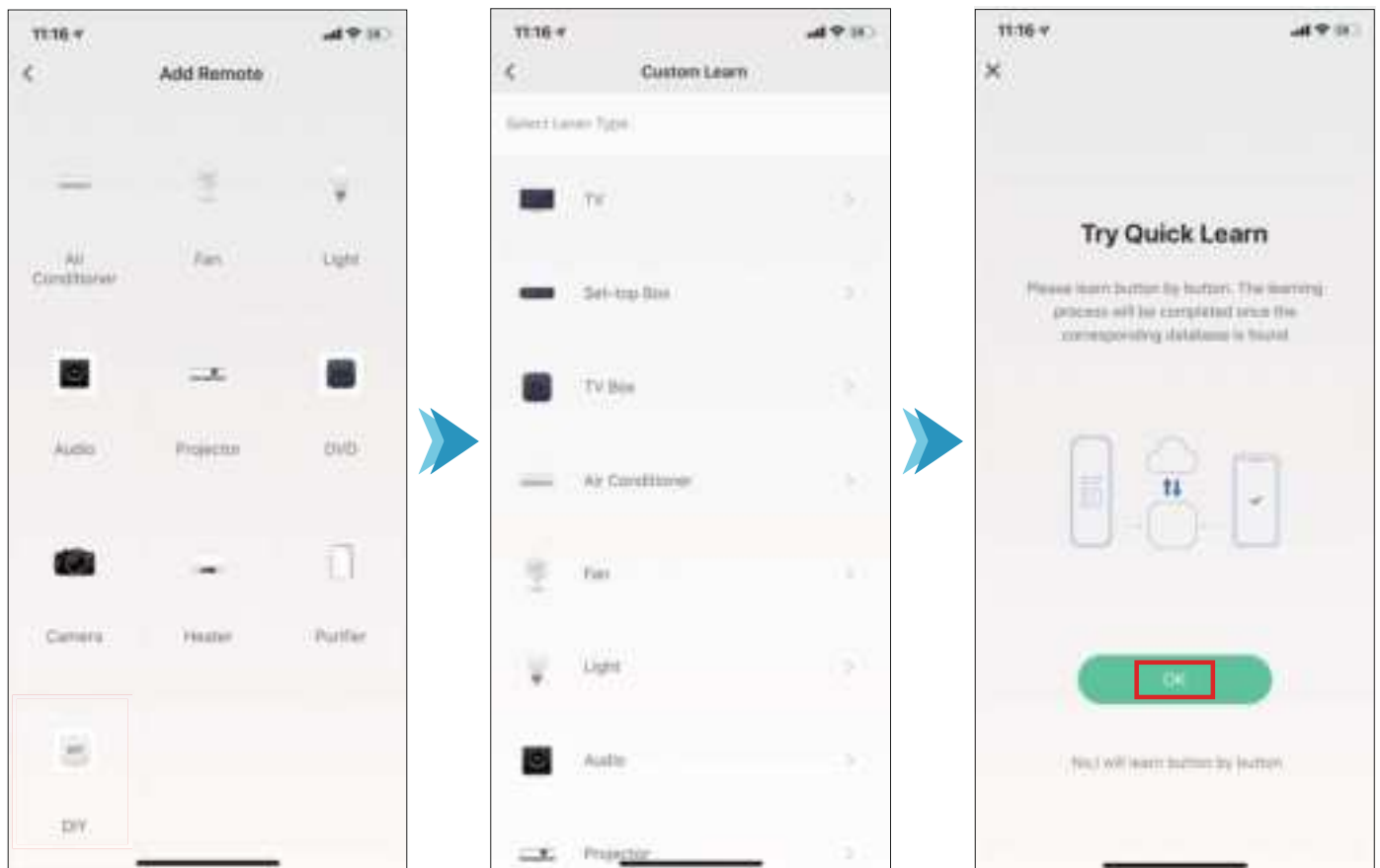
5. On the "Air Conditioner Match" page, refer to the page prompt to test at least 3 button functions. If you can control the air conditioner correctly, please click "Can Control", otherwise click "Another One(1/39)" and repeat the previous operation.

6. On the "Match Complete" page, click " ✎ " to rename the equipment. Click "OK" to complete the match and return to the main interface.

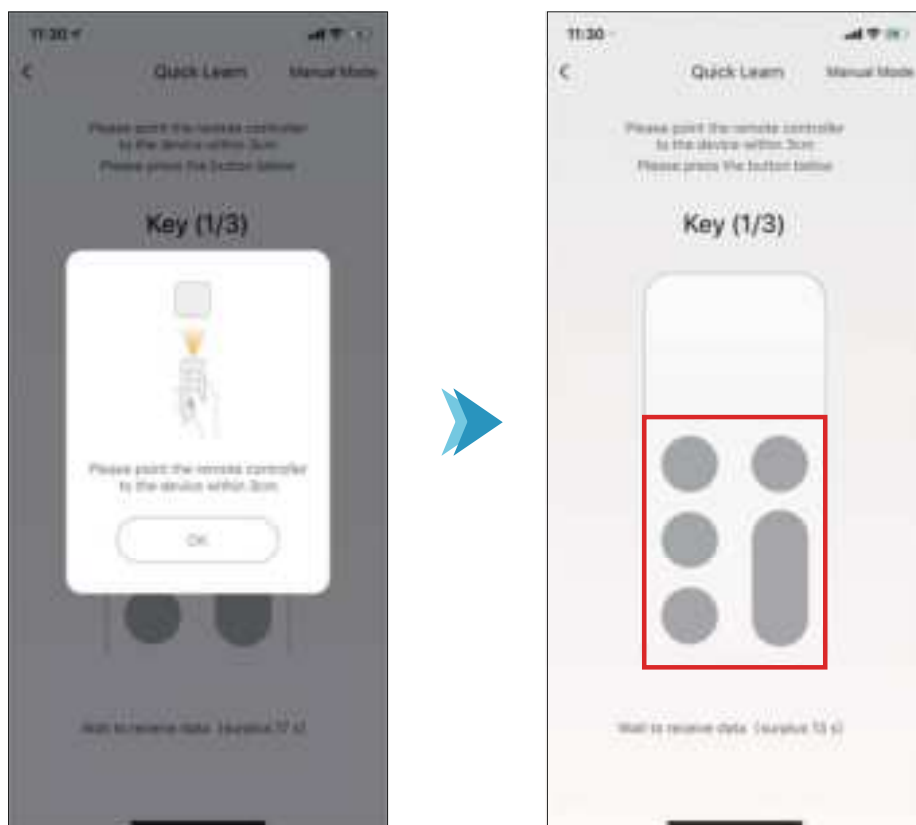


If your device does not match successfully, please use the customized learning feature:

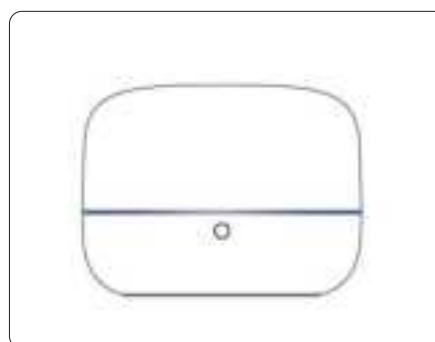
1. On the add "Add Remote" page, slide down the page and select "DIY".
2. On the "Custom Learn" page, select the device type.
3. On the "Try Quick Learn" page, click "OK".




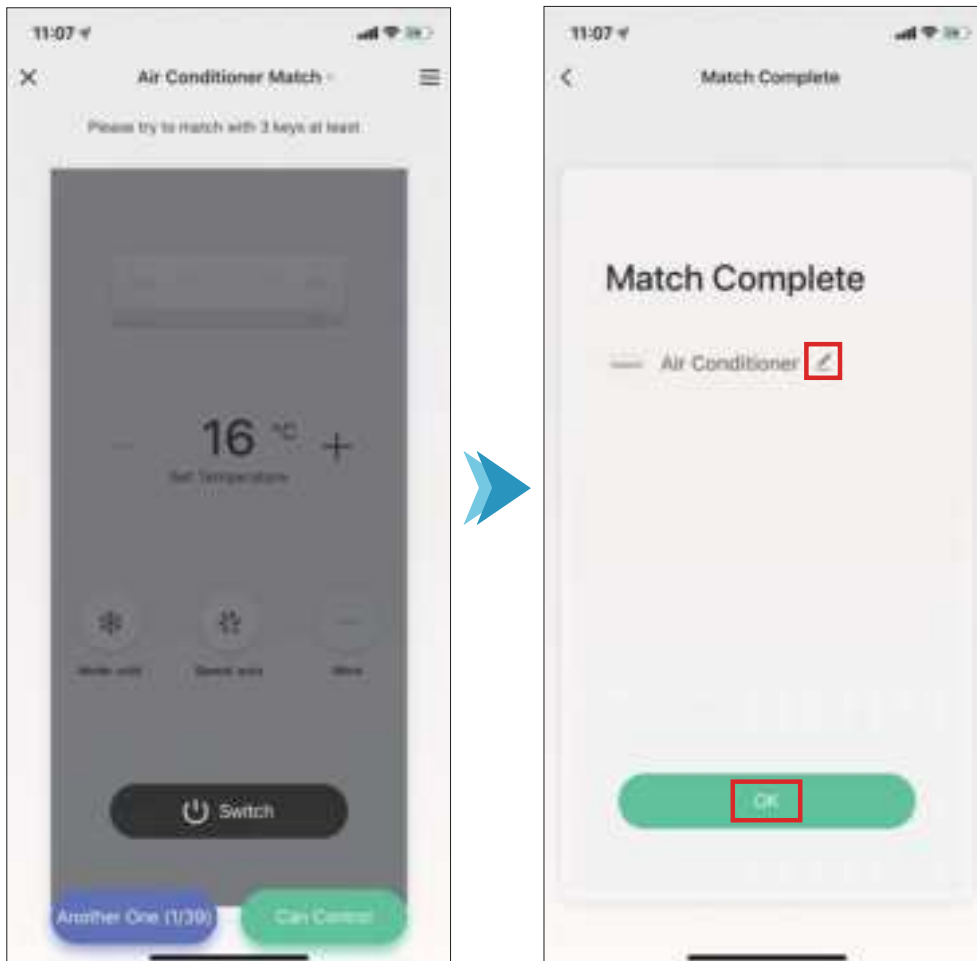
4. On the "Quick Learn" page, refer to the prompt on the page, point the remote control at the reset button of this product, press the remote control button to learn, and learn 3 buttons in a row.



- When customized learning starts, the light effect of the device is blue background and a single purple light circulates around quickly.

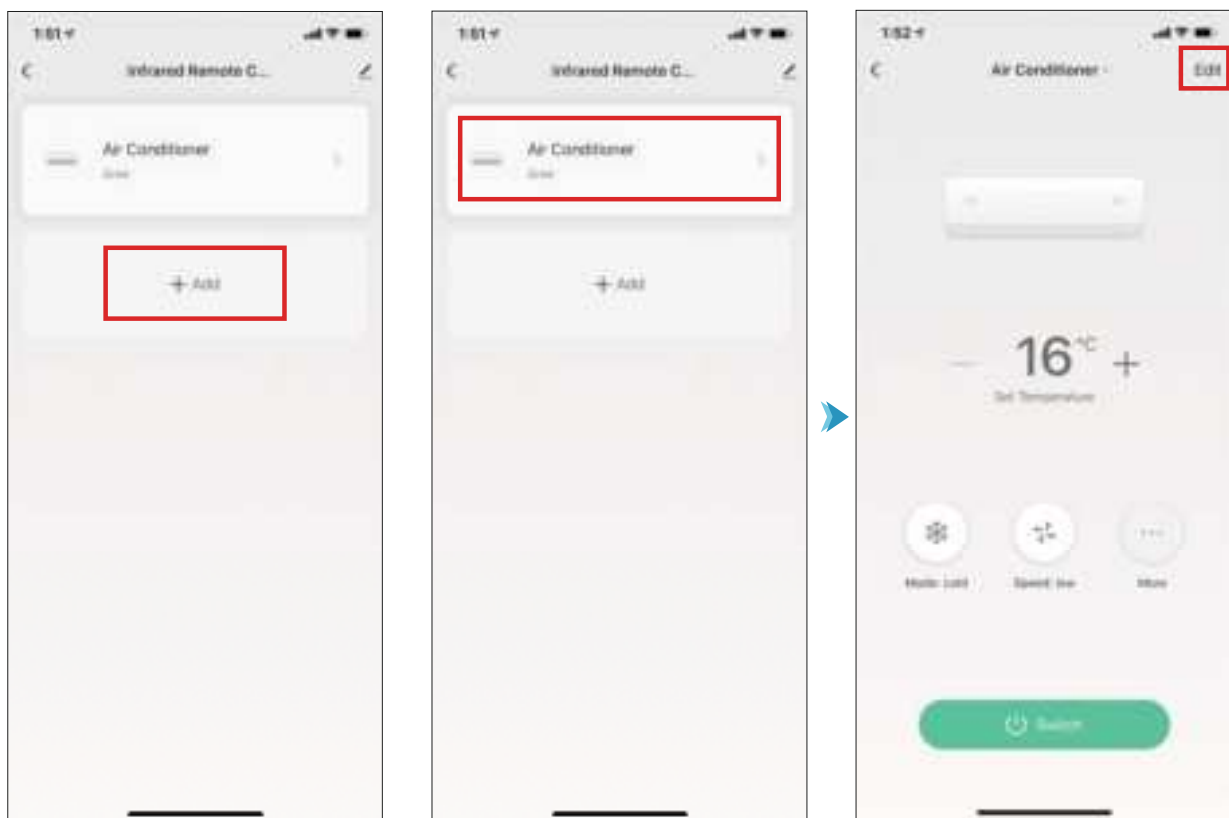


5. On the "Air Conditioner Match" page, refer to the page prompt to test at least 3 button functions. If you can control the air conditioner correctly, please click "Can control", otherwise click "Another One(1/39)" and repeat the previous operation.
6. On the "Match Complete" page, click "" to rename the equipment. Click “OK” to complete the match and return to the main interface.

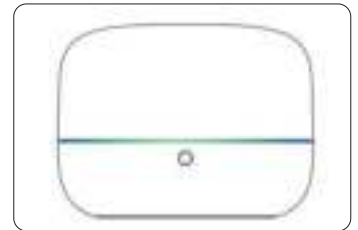


Introduction to the main interface, taking air conditioning as an example:


1. In the main interface of "Infrared Remote Control", click "+ Add" to add the remote control.
2. Click "Air Conditioner", enter the remote control panel, click the button to operate the air conditioner, click "Edit" in the upper right corner of the page, you can remove the device and copy the button.

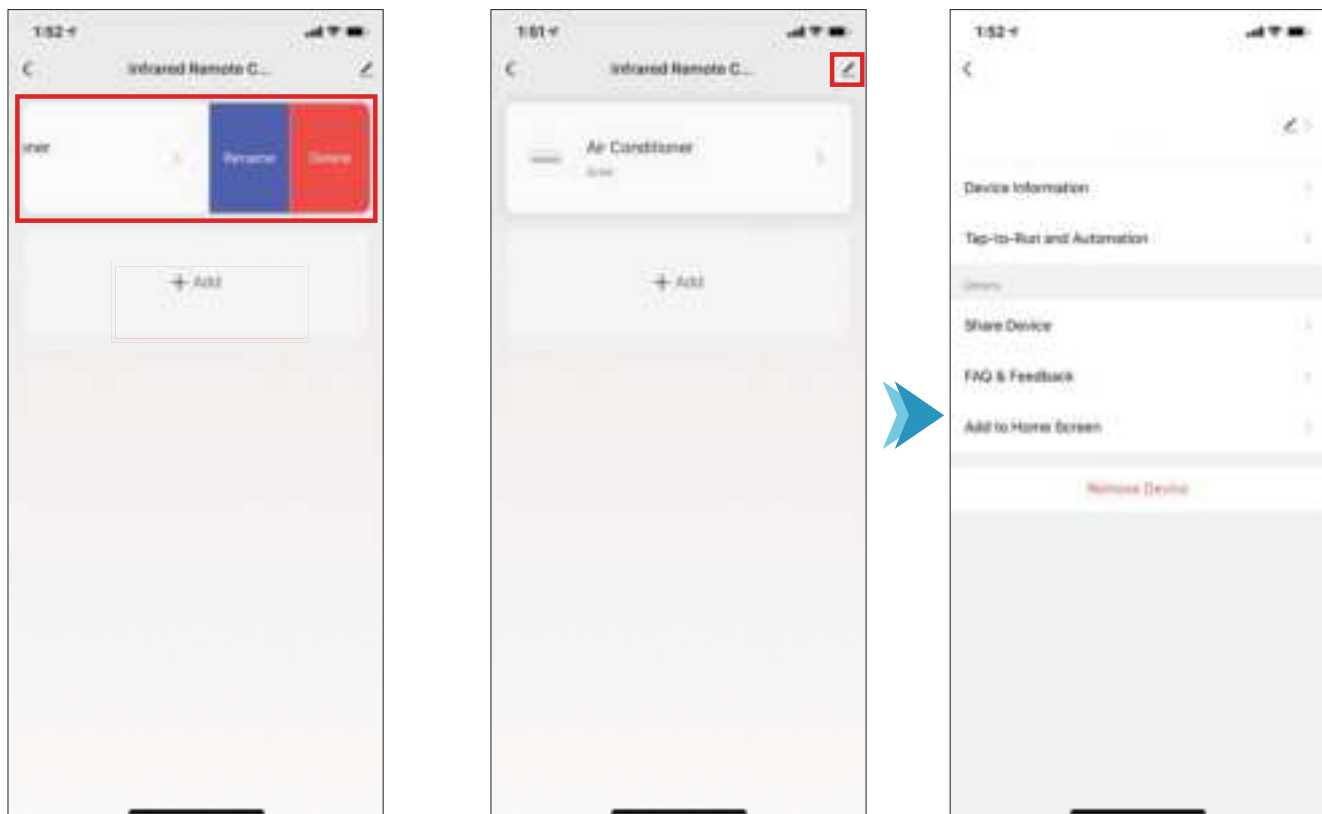


- When you click the button to operate the air conditioner, this product is accompanied by an indicator light surrounded by a single green light on a blue background.



3. Long press or left slide "Air conditioner", you can rename, delete and other operations.

4. Click the "" button in the upper right corner to view device information, offline reminder, device removal and other operations.



Voice control

The equipment is connected to the Alexa/Google smart home system, and the user can control the product by talking with the Alexa/Google speaker.

You can control it through voice control:

- ① Turn-on and turn-off of the TV
- ② Turn-on and turn-off of the air conditioner
- ③ Opening and closing of speakers

Here are some things to try

Alexa, turn on the TV.

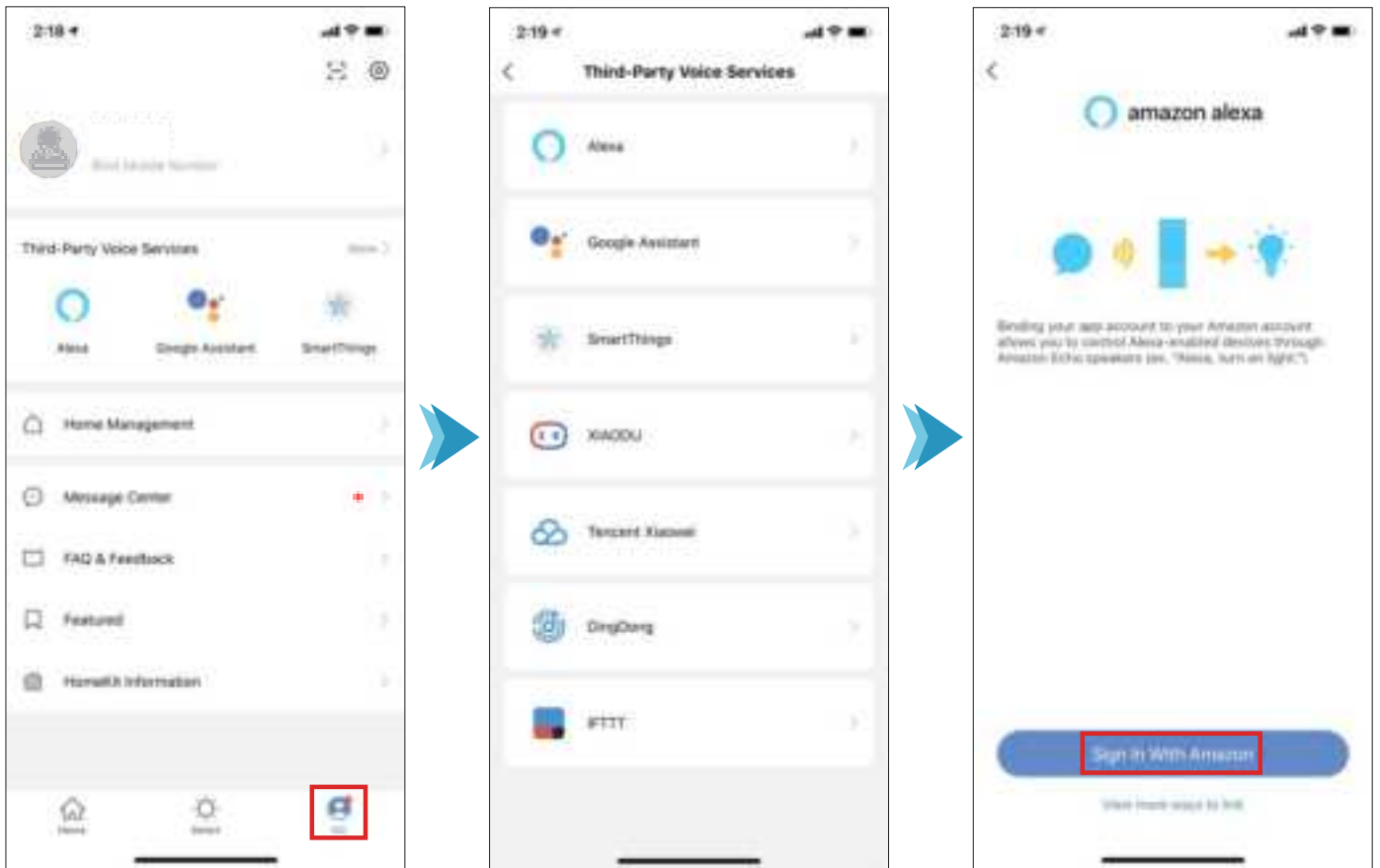
Alexa, on the aircon.

Alexa, turn on the speaker.




Tips: To learn more and access additional features, download the Amazon Alexa APP.

Third-party smart device link mode

Support pairing the link with the Amazon Alexa/Google Assistant/TmallGenie to enter the "Me" page, select your corresponding device name, and follow the prompts to add the device.



Product parameters

Product Model	SRW-002 PRO	External dimension	50.1×38mm
Product material	PC/ABS	Operating temperature	Temperature 10 °C-50 °C
Power input	Micro Usb DC 5V–1A	Working humidity	≤85% RH
Data line	Micro Usb charging line 1.2m	Adaptor	5V–1A (optional)
Connection mode	Wi-Fi 2.4GHz	Standby power consumption	≤0.5W
Control mode	APP control + intelligent speaker voice control	Infrared frequency	38K
Support equipment	Android 4.0/ios8.0 and above	Infrared direction	360 degrees
Authent-ication	  	Infrared distance	About 10 meters

Frequently asked questions

1. The device cannot be connected?

① Please put the router, equipment and mobile phone in the same area, and please be as close as possible.

- ② Please make sure that the Wi-Fi signal in your area is normal .
(only 2.4G Wi-Fi network is supported)
- ③ Please press the button for a long time to re-enter the distribution network mode and try to connect to the distribution network again.

2. APP suddenly can't control the device?

It could be the network or the device is offline

- ① Please make sure that the device is powered on.
- ② Please confirm that the connected Wi-Fi signal is normal (only 2.4G Wi-Fi network is supported). It is recommended that you keep the APP on for about 3 minutes to see if the device is still online.
- ③ If you are still online, please place your phone next to the device, then connect to the same Wi-Fi, as the device and try to open the web page to see if it is smooth to determine the condition of the network.
- ④ Exit the application in the background of the phone, then open the application again, and then try again.

3. How to reset Wi-Fi?

When connected to the power supply, please press the button 5S for a long time to reset the device.

4.The device status cannot be synchronized with the display status on the APP?

- ① Please make sure that the device is connected to the Internet.
- ② After operating the device using APP, check to see if the device status is synchronized with the display status on the APP.

5. After the device is connected to the Internet, it can be controlled in the same location, but the mobile phone can not be remotely controlled by another address or other network.

If the device is in such a situation, it is possible that the device and the mobile phone are connected to the same local area network, but not to the network.

- ① Please place your phone next to the device, then connect to the same Wi-Fi, as the device and try to open the web page to see if it is smooth to determine whether the Wi-Fi signal is normal.
- ② If you cannot access the network, it is recommended that you restart the router.

Notes

- Please wipe this product with a soft cloth.
- Do not scrub this product with abrasive cleaning agents, rough

chemicals, alcohol, acetone cleaning agents, etc., so as not to damage the surface of the product.

- Store the product in a safe, dry place that will not be overstocked, bruised or damaged.
- Do not wrap the power cord around the appliance when storing the product.
- Please use the included power adapter (5V–1A) to avoid damage to the equipment.
- Please use this product correctly according to the instructions. Disassembly and collision of this product are strictly prohibited.
- Please place the product on a stable horizontal surface and a non-smooth surface.
- Do not use it in high temperature, humidity or corrosive environment, so as to avoid leakage caused by circuit damage.
- Please take good care of it and don't let children use electrical equipment as toys to avoid accidents.
- This product is not fireproof, please do not throw it into the fire, do not go near the source of fire
- This product is not waterproof, please do not put it into the water, so as not to damage the equipment.

FCC Statement

NOTE: This equipment has been tested and found to comply with the limits for a Class B digital device, pursuant to part 15 of the FCC Rules. These limits are designed to provide reasonable protection against harmful interference in a residential installation. This equipment generates uses and can radiate radiofrequency energy and, if not installed and used in accordance with the instructions, may cause harmful interference to radio communications. However, there is no guarantee that interference will not occur in a particular installation. If this equipment does cause harmful interference to radio or television reception, which can be determined by turning the equipment off and on, the user is encouraged to try to correct the interference by one or more of the following measures:

- Reorient or relocate the receiving antenna.
- Increase the separation between the equipment and receiver.
- Connect the equipment into an outlet on a circuit different from that to which the receiver is connected.
- Consult the dealer or an experienced radio/TV technician for help

Changes or modifications not expressly approved by the party responsible for compliance could void the user's authority to operate the equipment.

This device complies with Part 15 of the FCC Rules. Operation is subject to the following two conditions:

(1) this device may not cause harmful interference, and (2) this device must accept any interference received, including interference that may cause undesired operation.

RF Exposure Warning Statements:

This equipment complies with FCC radiation exposure limits set forth for an uncontrolled environment. This equipment shall be installed and operated with minimum distance 20cm between the radiator & body.