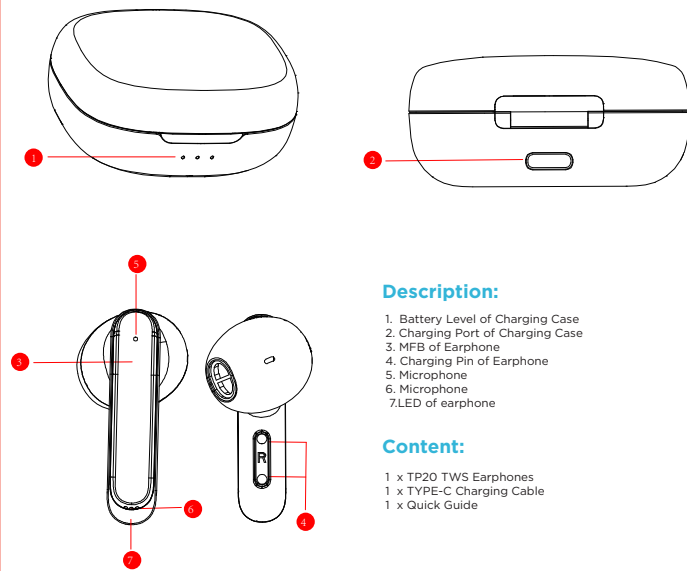


Quick Guide

TP20
Wireless Earphones



Description:

1. Battery Level of Charging Case
2. Charging Port of Charging Case
3. MFB of Earphone
4. Charging Pin of Earphone
5. Microphone
- 7.LED of earphone

Content:

- 1 x TP20 TWS Earphones
- 1 x TYPE-C Charging Cable
- 1 x Quick Guide

Product Specification

Bluetooth: V5.3
Frequency Range: 2402 - 2480 MHz
Sensitivity: 103 ± 3dB
Impedance: 32 ohm ±15%
Input: DC 5V / 500mA
Earphones Battery Capacity: 30 mAh x 2
Charging Pod Battery Capacity: 320 mAh
Charge Time: 1.5 hours

Charging for Earphones:

Fully charge the battery for 2-3 hours before using the earphones for the first time, or when they have been unused for extended periods.

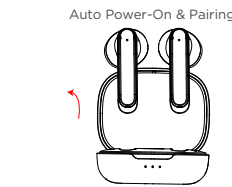
Put the earphones into the charging case, they will charge automatically. The indicator of earphones will stay on light. Once the earphones are fully charged, the indicators will be light off.

Charging for Charging Case:

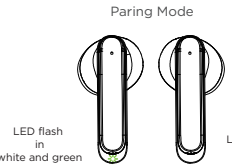
When the charging case is connected with charger (not included) or USB port of your computer by included charging cable, the indicator will keep flashing. When the charging case is fully charged, the three indicators will keep on light.

NOTE:

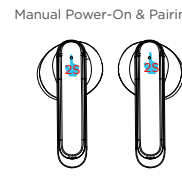
When the charging case is out of battery, the earphones will not turn on/off automatically when removed from or placed back into the charging case. In this case, turn the earphones on/off manually.



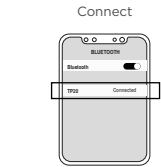
Auto Power-On & Pairing



When earphones are into pairing mode, one earphones will flash into white and green, and the rest will not flash when earphones are connected.

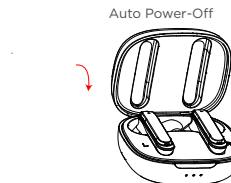


Manual Power-On & Pairing

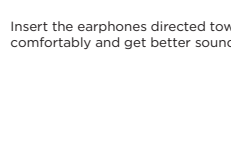


Connect

Power-Off



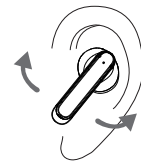
Auto Power-Off



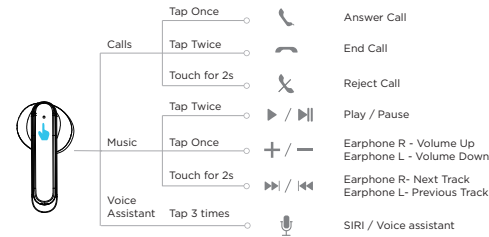
Manual Power-Off

Wearing

Insert the earphones directed towards your ear canal. Twist gently until the earphones fit comfortably and get better sound experience.



Control



Reset

If you have problem to connect the earphones with your device, don't worry about it, please follow the step as below:

1. Make sure all devices have turned off Bluetooth Function. Clean all the pairing records if need.
2. Take the earphones out of the charging case, tap either earphones by 5 times quickly, prompt sound will be activated, and the indicators of both earphones will flash 5 times quickly.
3. Follow the pairing step as instruction.

FCC Statement

Changes or modifications not expressly approved by the party responsible for compliance could void the user's authority to operate the equipment.

This equipment has been tested and found to comply with the limits for a Class B digital device, pursuant to Part 15 of the FCC Rules. These limits are designed to provide reasonable protection against harmful interference in a residential installation. This equipment generates uses and can radiate radio frequency energy and, if not installed and used in accordance with the instructions, may cause harmful interference to radio communications. However, there is no guarantee that interference will not occur in a particular installation. If this equipment does cause harmful interference to radio or television reception, which can be determined by turning the equipment off and on, the user is encouraged to try to correct the interference by one or more of the following measures:

- Reorient or relocate the receiving antenna.
- Increase the separation between the equipment and receiver.
- Connect the equipment into an outlet on a circuit different from that to which the receiver is connected.
- Consult the dealer or an experienced radio/TV technician for help

This device complies with part 15 of the FCC rules. Operation is subject to the following two conditions (1) this device may not cause harmful interference, and (2) this device must accept any interference received, including interference that may cause undesired operation.