



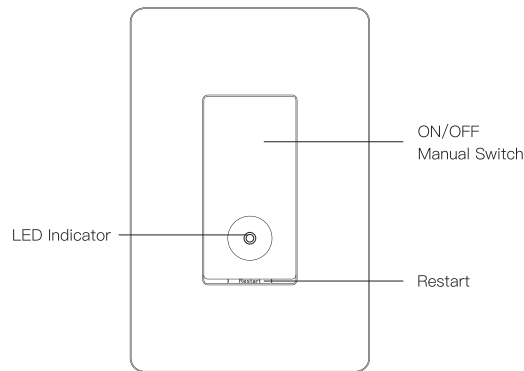
USER MANUAL SS02S

Need Help?

✉: Support@treatlife.tech

Return Add: 1220 3rd St. Las Cruces, NM 88005

01 | PRODUCT OUTLINE



02 | INDICATOR LIGHT STATUS

Light Color	Light Status	Switch Status
White	ON	Power OFF
	OFF	Power ON
Red	Blink quickly(0.25s interval)	Ready for default configuration mode
	Blink slowly (1.5s interval)	Ready for AP(Access Point) configuration mode

03 | SAFETY INFORMATION

Risk of Electric Shock: Electricity can cause personal injury and property damage if handled improperly. If you are not sure about any part of these instructions, please seek professional assistance from a qualified electrician.

⚠ Warnings

- Turn off the power at the circuit breaker and test that power is off before wiring.
- Check supported maximum wattage rating: 1250W.
- Replace single pole switch only; DO NOT compatible with 3-way switch.

Prepare Other Tools You'll Need

- Screwdriver
- Pliers
- Electrical Tester

04 | INSTALLATION

Note

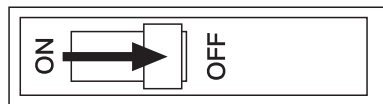
- Make sure that the power at the circuit breaker is off before wiring.
- Neutral Wire is required. Confirm the wall box contains a Neutral Wire (typically white). If the wall box doesn't have a Neutral Wire,

please try another location in your home or call a professional electrician to install the switch.

- The wire colors indicated in this manual are the usual colors and may differ in some homes.
- Ensure the wire conductors are securely fastened to each wire.
- Ensure the WiFi signal is strong before wiring.
- If you don't have any wiring experience, please call a professional electrician.

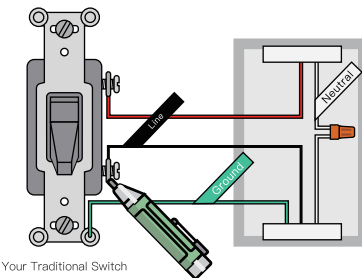
STEP 1

Turn off the circuit breaker and use the electrical tester to test the power.
Ensure the switch is off before wiring.

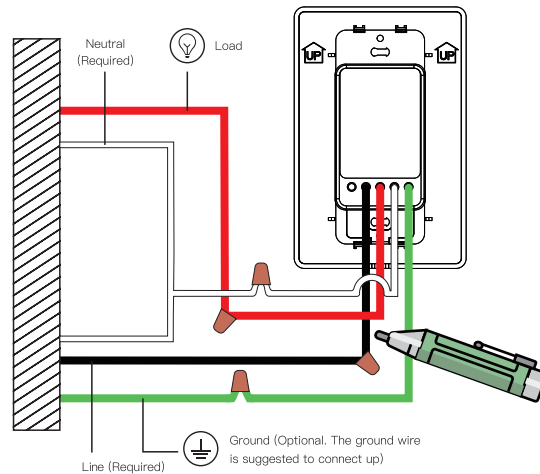


STEP 2

Remove the existing wall plate; turn on the power at the circuit breaker and use an electrical tester to check which wire is line wire; the tester will flash and/or chirp when it comes close to a line wire.
Turn off the power at the circuit breaker and use the electric tester to test if the power is off, and then pull the existing switch out; label the line wire and other wires; disconnect the wires from the existing switch with pliers.



Follow the wiring diagram to connect the switch wires to the wires in the wall box with the wire conductors.

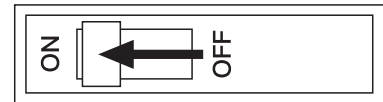


STEP 3

Mount the switch with the provided screws and snap the wall plate on it.

STEP 4

Turn the power back on at the circuit breaker.



STEP 5

Switch the light on.

05 | ADD DEVICES

1. Download Smart Life APP



GET IT ON
Google play



Available on the
App Store

Please scan the QR code or download Smart Life on App Store or Google Play.

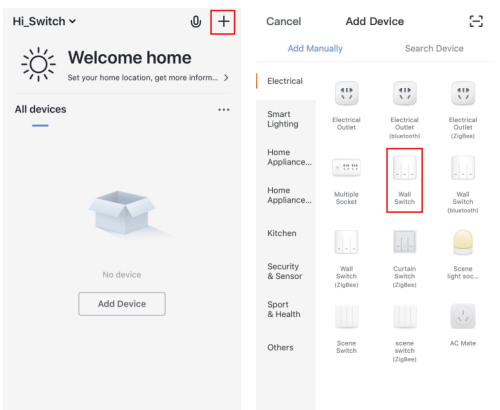
2. Registration or Log In

- Download "Smart Life" Application.
- Enter the Register/Login interface; tap "Register" to create an account by entering your phone number to get verification code and "Set password". Choose "Log in" if you already have a Smart Life account.

3. Configure the APP to the Switch

Preparation: Ensure the switch has connected with electricity; ensure your phone has connected to WiFi router and is able to connect to the internet.
Note: this switch only supports 2.4G network. If you have connected 5G network, please disconnect 5G network firstly. Please do not name the 5 GHz and 2.4 GHz frequency with the same name in your router.

- Tap the icon "+" on the top right corner to add device; choose "Wall Switch".

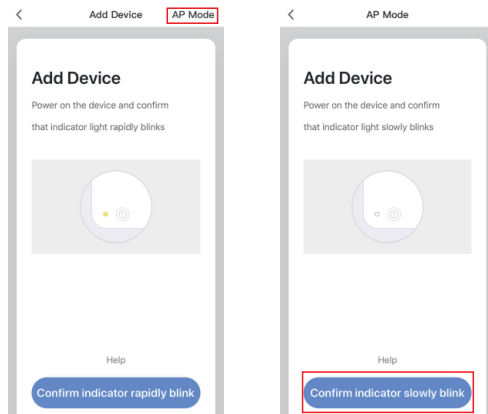


3.1 Default Configuration Mode

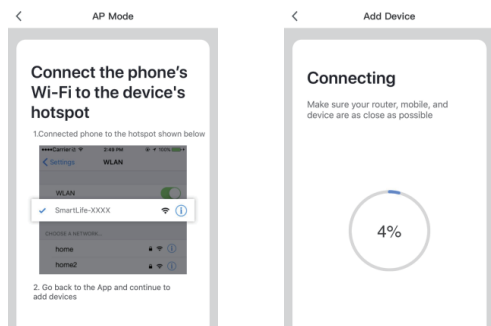
- Press and hold the manual switch for 5 seconds until the red indicator light blinks quickly.
- Tap "Confirm indicator rapidly blink"; enter WiFi Password; wait for completing the connection.
- Devices have added successfully.

3.2 AP Mode

- If you cannot configure successfully with the default mode, please try to connect with AP Mode.
- Tap "AP Mode" on the top right corner.
- Press and hold the manual switch for 5 seconds, you can see the red indicator light blinks quickly. Then press and hold for 5s again until the indicator light blinks slowly.
- Tap "Confirm indicator slowly blink".



- Enter Wi-Fi Password.
- Open WLAN settings; connect with "SmartLife-xxxx".
- Back to the App and continue to add the device and wait for completing the connection.



06 | SPECIFICATION

Model	SS02S
Input Voltage	AC 100V~240V, 50/60Hz
Output Current	10A Maximum Resistive Load 5A Incandescent
Wireless Frequency	2.4GHz
Wireless Standard	IEEE802.11 b/g/n
Support System	Android 4.1 and above or iOS 8.0 and above
Operating Temperature	-5°C~45°C
Working Humidity	≤70%RH
Disconnection Means	Type 1B

07 | TROUBLESHOOTING GUIDE

Possible Problem	Possible Cause	Solution
Unable to connect the switch with the phone	The switch is not allowed for connection or the switch has been connected	Press and hold the switch for 5s, the switch will initiate pairing
Unable to turn the switch on/off manually	Incorrect wiring	Make sure the switch is wired correctly
	No electricity	Check the circuit breaker; make sure that the power is restored to the switch
	The light bulb is broken or is not compatible	Replace the light bulb;
The switch won't respond to APP control	Network delays or is disconnected	Check your network connectivity
	Permission is denied by your phone	Grant permission on your phone Settings
	The switch is out of order	Manually switch on to check the switch
Your light bulb is blinking when switched off	Electric leakage occurs or the light bulb and the switch are not compatible	Rewire or replace the light bulb
The switch can't connect to the APP	Enter wrong Wi-Fi password	Enter the correct Wi-Fi password
	Weak Wi-Fi signal	Check Wi-Fi signal
	Unable to connect to Wi-Fi	Confirm Your home Wi-Fi is 2.4G network

FCC Caution:

This device complies with part 15 of the FCC Rules. Operation is subject to the following two conditions: (1) This device may not cause harmful interference, and (2) this device must accept any interference received, including interference that may cause undesired operation.

Any Changes or modifications not expressly approved by the party responsible for compliance could void the user's authority to operate the equipment.

Note: This equipment has been tested and found to comply with the limits for a Class B digital device, pursuant to part 15 of the FCC Rules. These limits are designed to provide reasonable protection against harmful interference in a residential installation. This equipment generates uses and can radiate radio frequency energy and, if not installed and used in accordance with the instructions, may cause harmful interference to radio communications. However, there is no guarantee that interference will not occur in a particular installation. If this equipment does cause harmful interference to radio or television reception, which can be determined by turning the equipment off and on, the user is encouraged to try to correct the interference by one or more of the following measures:
--Reorient or relocate the receiving antenna.
--Increase the separation between the equipment and receiver.
--Connect the equipment into an outlet on a circuit different from that to which the receiver is connected.
--Consult the dealer or an experienced radio/TV technician for help.

Note: This equipment complies with FCC radiation exposure limits set forth for an uncontrolled environment. This equipment should be installed and operated with minimum distance 20cm between the radiator& your body..

RSS (Category I Equipment):

This device complies with Innovation, Science, and Economic Development Canada's licence-exempt RSS standard(s). Operation is subject to the following two conditions:

- this device may not cause interference, and
- this device must accept any interference, including interference that may cause undesired operation of the device.

Le présent appareil est conforme aux CNR d' Innovation, Sciences et Développement économique Canada applicables aux appareils radio exempts de licence. L'exploitation est autorisée aux deux conditions suivantes :
(1) l'appareil n' doit pas produire de brouillage, et
(2) l'utilisateur de l'appareil doit accepter tout brouillage radioélectrique subi, même si le brouillage est susceptible d'en compromettre le fonctionnement.

The device is compliance with RF exposure guidelines, users can obtain Canadian information on RF exposure and compliance.The minimum distance from body to use the device is 20cm.
Le présent appareil est conforme
Après examen de ce matériel aux conformité ou aux limites d'intensité de champ RF,
les utilisateurs peuvent sur l'exposition aux radiofréquences et la conformité et compliance d'acquérir
les informations correspondantes. La distance minimale du corps à utiliser le dispositif est de 20cm.