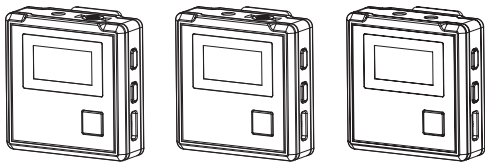


# 7RYMS



## iRay DW20

2.4G Dual-channel Wireless Microphone

### User Guide



## Foreword

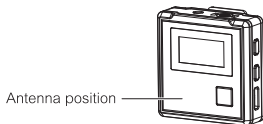
Thanks for purchasing 7RYMS iRay DW20

## Main Features

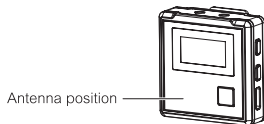
- . 2.4G Dual-channel Wireless Microphone, Global Free Frequency
- . 48kHz/16bit Audio Recording, Intelligent Denoise
- . Support Digital&Analog Output Mode, Universal for Phone, Computer and Camera
- . Mono/Stereo/Safety Mode for Ultimate Flexibility in Post-production
- . LCD Screen for Intuitive Power and Audio Dynamic Monitor
- . Preamp Amplifier and 12-level Adjusted Gain Control
- . Real-time Audio Monitor and Mute Function
- . Internal and External MIC Two Input Modes
- . Low Latency < 20ms, Working Range Up to 100m(Open Environment)
- . Designed with Multi-functional Belt Clip and Compact

## Notice

- ⚠ Due to 2.4G wireless characteristics, it is better to keep face to face when use it, and do not turn your back to the receiver, otherwise it is easy to generate breakpoints, which is a normal phenomenon
- ⚠ Do not block the antenna position to avoid any poor signal generated
- ⚠ Please attention that it can not realize STEREO function when in single-channel and safety mode
- ⚠ The product belongs to high-precision instruments, please avoid falling, collision or pounding
- ⚠ Do not use the equipment in the vicinity of heat source or interference source, such as radiator, oven, WIFI AP, intercom or next to the other wireless devices
- ⚠ If the pick-up distance is close or when it is used outdoors, please put on the wind muff to prevent sound burst or reduce wind noise
- ⚠ Do not use the equipment in rain or in a damp environment to avoid short-circuit danger
- ⚠ Please keep the product in a dry environment



Transmitter(TX)



Receiver (RX)

## Packing List

1. Transmitter(TX)
2. Receiver(RX)
3. 3.5mm TRS Mic Audio Input Cable
4. Wind Muff
5. 3.5mm TRS-TRS Audio Cable
6. 3.5mm TRS-TRRS Audio Cable
7. 3 in 1 Charging/Output Cable  
(The orange cable can be used for charging and digital output, the black cable can only be used for charging )
8. Carry Case
9. User Manual
10. Warranty Card



①



②



③



④



⑤



⑥



⑦



⑧



⑨



⑩

### Purchase Options:

iRay DW20 (A)

①x2+②+③x2+④x2+⑤+⑥+⑦+⑧+⑨+⑩

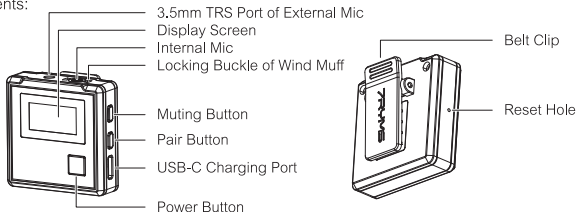
iRay DW20 (B)

①+②+③+④+⑤+⑥+⑦+⑧+⑨+⑩

## Components and Instruction

### Transmitter(TX)

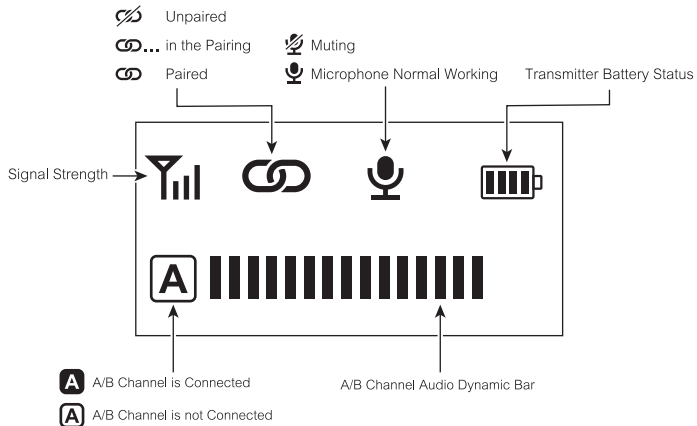
#### Components:



#### Function Introduction:

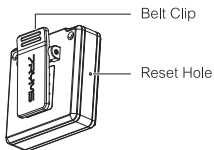
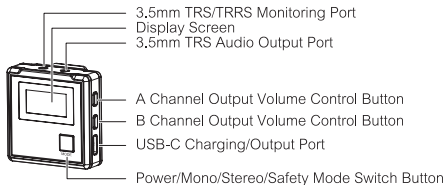
1. 3.5mm TRS Port of External Mic: Insert the 3.5mm TRS Mic Audio Input Cable, and you can use the external lavalier microphone for recording. At this time, the internal microphone of the device is turned off automatically
2. Power Button: Long press for On/Off
3. Muting Button: Long press to switch between normal recording and mute
4. Pair Button: Long press for pairing with the receiver
5. USB-C Charging Port: Connect the transmitter with the power through 3 in 1 charging/output cable to charge
6. Reset Hole: If there is an abnormal phenomenon such as the device is crash or unable to turn on, insert the reset pin into the reset hole to reset it

## Screen Display:



## Receiver(RX)

### Components:

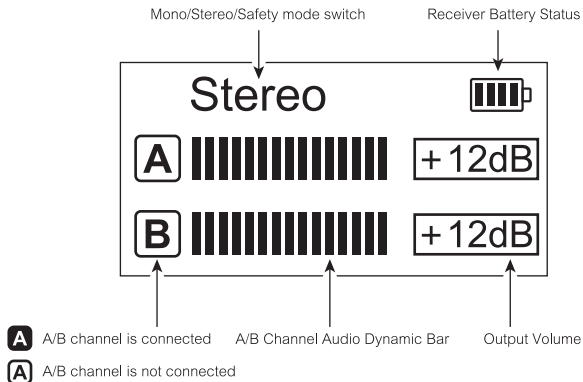


## Function Introduction:

1. 3.5mm TRS/TRRS Monitoring Port:  
Plug in 3.5mm TRS/TRRS headphones to monitor; When monitoring in Stereo mode, A is the left channel and B is the right channel
2. 3.5mm TRS Audio Output Port:  
Output a mixed audio track in Mono mode; Output two independent audio tracks in Stereo mode; Output two mono audio in Safety mode: One is normal audio, and the other is safe audio reduced by -6dB on the basis of normal audio
3. A/B Channel Output Volume Control Button:  
Short press to cyclically adjust the A/B channel output volume. In the mono mode, the A/B channel output volume is adjusted synchronously
4. USB-C Charging/Output Port:  
Connect the receiver and the corresponding device through the 3-in-1 charging/output cable for charging or digital output
5. Power/Mono/Stereo/Safety Mode Switch Button:  
Long press for On/Off; Short press for Mono/Stereo/Safety mode switch; It can not realize STEREO function when in single-channel and safety mode
6. Reset Hole:  
If there is an abnormal phenomenon such as the device is crash or unable to turn on, insert the reset pin into the reset hole to reset it



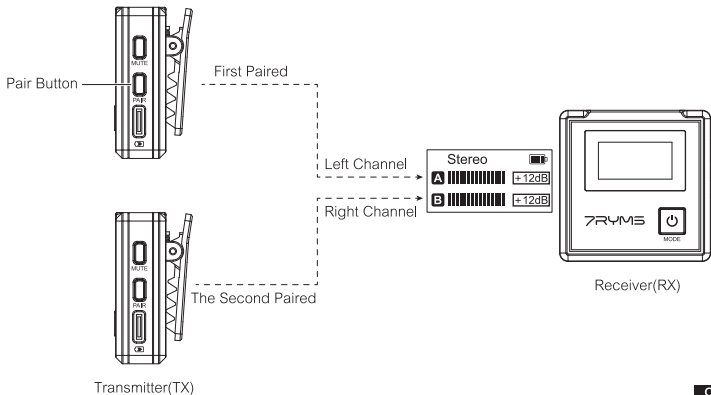
Screen Display:



## Installation and Usage

### Pairing Method:

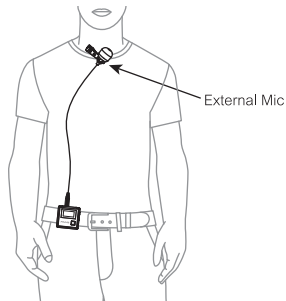
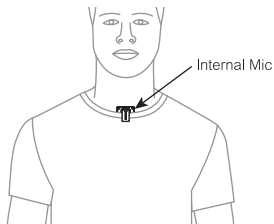
Turn on the transmitter, long press its pair button to pair. The first paired transmitter is channel A (left channel), and the second one is channel B (right channel)



## Installation Method

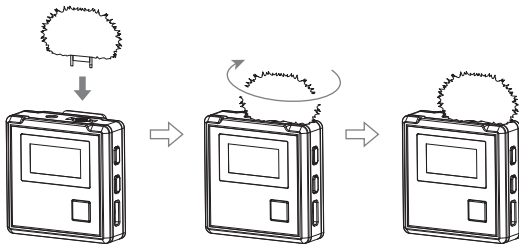
### Transmitter(TX):

Choose internal/external mic according to personal needs



1. For better concealment during use, it is recommended that the belt clip is fixed on the outside for use
2. When the external microphone is working, the internal microphone will be automatically turned off

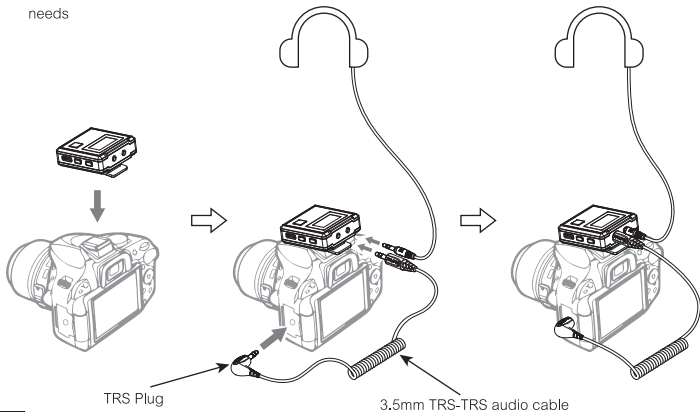
When using the internal mic, install the wind muff according to personal needs; Insert the wind muff into the locking buckle, and then tighten it clockwise



## Receiver(RX)

### 1.Work with Camera

Fix the receiver through the belt clip to the camera's cold shoe mount; Connect the receiver with camera through the 3.5mm TRS-TRS audio cable; Choose whether to monitor according to personal needs





## Specifications

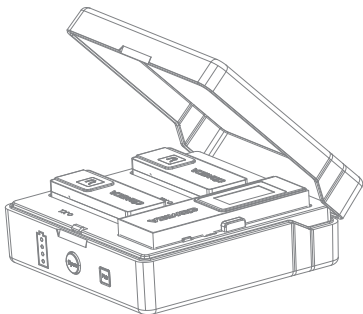
### Transmitter(TX)

Wireless Band	2400 ~ 2483.5MHz
Transmitting Power	+10dBm
Receiving Sensitivity	-86dBm
SNR	>70dB
Antenna	PCB Antenna
Polar Pattern	Omnidirectional
Frequency Response	80Hz ~ 20kHz
Sound Delay	<20ms
External Mic Input Interface	3.5mm TRS
Battery	Lithium polymer 330mAh 3.7V
Battery Life	6 Hours
Net Weight	28g
Dimension	45 x 45 x 22mm
Operating Temperature	0℃ ~ 50℃
Storage Temperature	-20℃ ~ +60℃

## Receiver(RX)

Wireless Band	2400 ~ 2483.5MHz
Receiving Sensitivity	-86dBm
SNR	> 70dB
Antenna	PCB Antenna
Audio Output Amplitude	+0dB ~ +12dB
Sound Delay	<20ms
Audio Output Interface	3.5mm TRS&USB-C
Digital Output	48kHz 24bits
Monitor Interface	3.5mm TRS/TRRS
Battery	Lithium polymer 330mAh 3
Battery Life	6 Hours .7V
Net Weight	28g
Dimension	45 x 45 x 22mm
Operating Temperature	0℃ ~ 50℃
Storage Temperature	-20℃ ~ +60℃





VDLive **10** USB

Versatile 2.4G Wireless USB Microphone

**User Manual**

## Foreword

Thanks for purchasing Comica VDLive10 USB

## Main Features

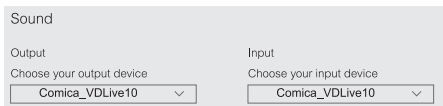
- Dual-channel 2.4G Wireless USB Microphone, Global Free Frequency
- Wide Compatibility for Phone, Computer, Camera, etc.
- Innovative Switchable Simplex/Duplex Communication&Monitoring
- Intelligent Noise Reduction, Working Distance Up to 30m (Open Area)
- 3.5mm Analog and USB Digital Two Output Modes
- Support Stereo Output for all Compatible Devices
- Rechargeable Storage Case
- IPS Screen for Intuitive Operation and Usage
- Mono/Stereo Switch, Volume Adjustment and Mute Functions,etc.
- Internal and External MIC Two Input Modes
- Low Latency<20ms, Stable Transmission

## Notice

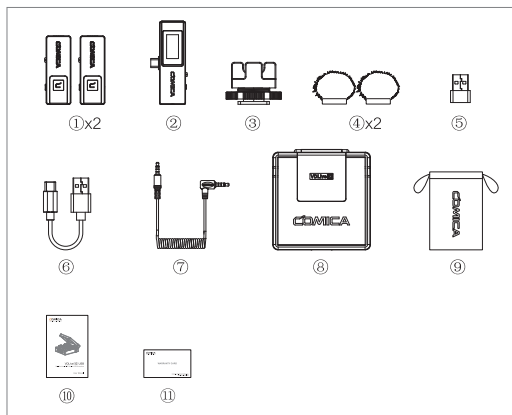
- ⚠ Some cameras are not compatible with 3.5mm TRRS-TRRS audio cable, it's necessary to purchase 3.5mm TRS-TRS audio cable by yourself
- ⚠ Don't block the antenna position to avoid any poor signal generated when using
- ⚠ Please power the transmitter and receiver off when charging

## Tips

1. VDLive10 USB is universal for USB and 3.5mm interface devices.  
When used in smartphone, the system will compulsorily choose VDLive10 USB
2. When used in computer, please follow the steps below:
  - ① Insert VDLive10 USB into the computer
  - ② Click sound setting and set the “Comica\_VDLive10” as the input and output device



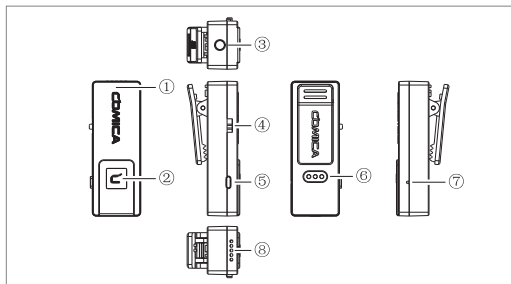
## Packing List



- ① Transmitter(TX)
- ② Receiver (RX)
- ③ Cold Shoe Mount
- ④ Wind Muff
- ⑤ USB C-USB A Adapter
- ⑥ Charging Cable
- ⑦ 3.5mm TRRS-TRRS Audio Cable
- ⑧ Charging Case
- ⑨ Carry Case
- ⑩ User Manual
- ⑪ Warranty Card

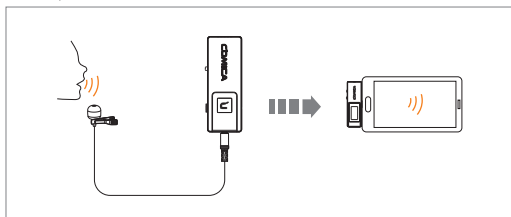
# Components and Instruction

## Transmitter(TX):



- ① Built-in Antenna
- ② Working Status Indicator Light (Orange light on: paired; Orange light flashing: unpaired; Red light on: MIC mute)
- ③ 3.5mm TRS External Mic Port (Simplex Mode)  
Monitoring Port (Duplex Mode)
- ④ S ↑ / OFF / D ↑ ↓ Switch Button ( S ↑ : Simplex mode; OFF: Power off; D ↑ ↓ : Duplex mode)
- ⑤ Volume / Mute Adjustment Button (Short press to adjust 4-level volume; long press to mute)
- ⑥ Charging Metal Contact
- ⑦ Reset Hole
- ⑧ Internal Mic

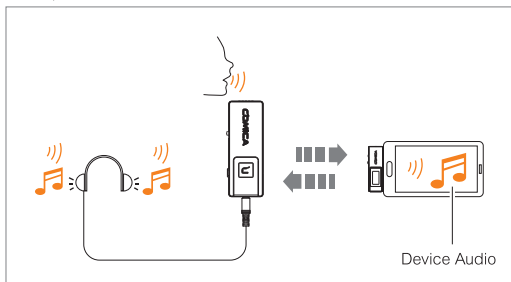
Simplex mode:



The transmitter audio is transmitted to the receiver unidirectionally, audio can only be monitored in receiver

👉 Simplex mode monitoring: audio of transmitter

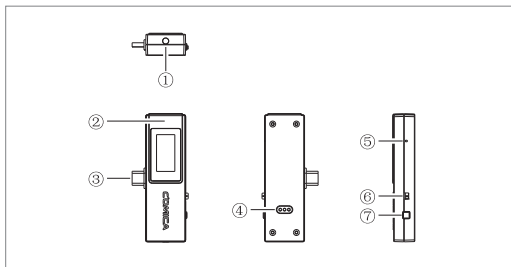
Duplex mode:



Two way transmission of audio between transmitter and receiver, audio can be monitored in transmitter and receiver

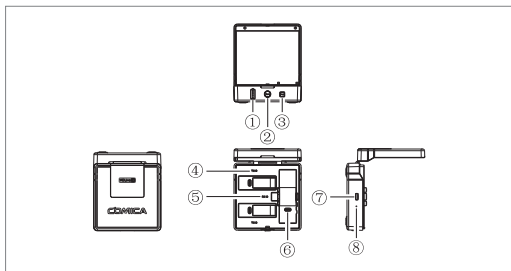
👉 Duplex mode monitoring: audio of transmitter + audio of the platform on the device connected by the receiver

## Receiver (RX)



- ① 3.5mm Audio Output Port ( 3.5mm analog output mode)  
Monitoring Port ( USB digital output mode)
- ② Built-in Antenna
- ③ USB-C Plug
- ④ Charging Metal Contact
- ⑤ Reset Hole
- ⑥ ON/OFF Switch Button (ON: Power on; OFF: Power off )
- ⑦ M/S Switch Button (M: mono mode; S: stereo mode; Short press to switch)

## Charging Case



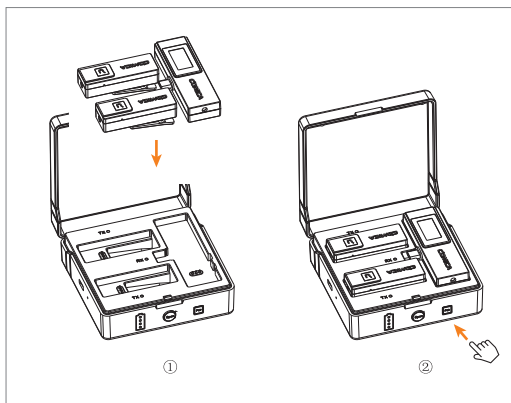
- ① Power Indicator Light (There are four power indicator lights, one of which represents 25% of the power)
- ② Switch Button (Press it to open the charging case)
- ③ Pairing Button (Long press to pair)
- ④ Transmitter Charging Status Indicator Light (Red light on: charging; Blue light on: fully charged)
- ⑤ Receiver Charging Status Indicator Light (Red light on: charging; Blue light on: fully charged)
- ⑥ Charging Metal Contact
- ⑦ USB-C Charging Port
- ⑧ Reset Hole



Please power the transmitter and receiver off when charging

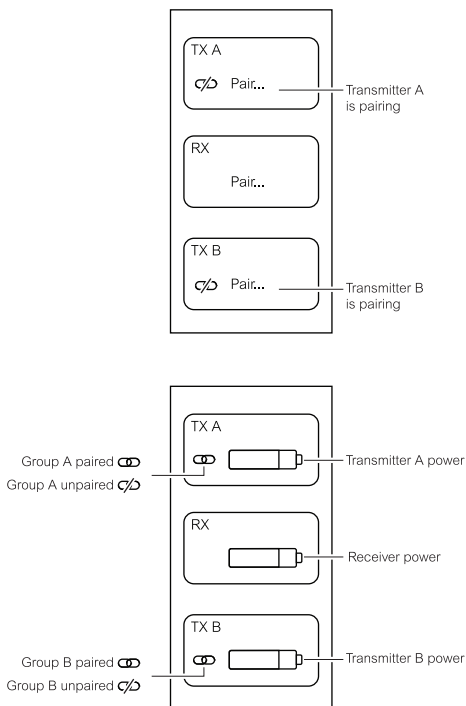


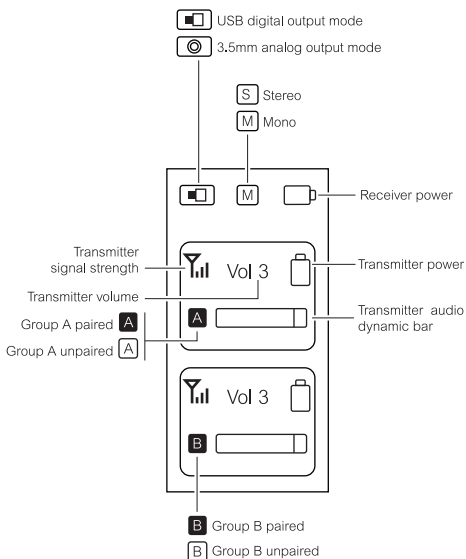
## Pairing Method



- ① Put the transmitter and receiver into the charging case
- ② Long press the pairing button to pair

## Screen Display Instruction of Receiver (RX)

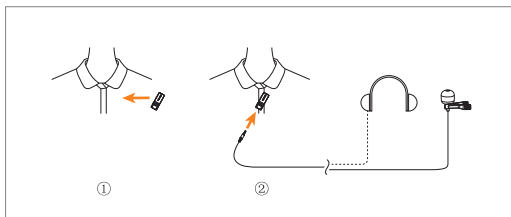




👉 Group A is left channel and group B is right channel

# Installation

## Transmitter(TX)



### 1.In Simplex Mode

- ① Switch the S ↑ /OFF/D ↑ ↓ switch button to S ↑  
(Simplex mode)
- ② You can choose to use internal mic or external mic to satisfy your recording demands

👉 When using an external mic, the internal mic is automatically turned off

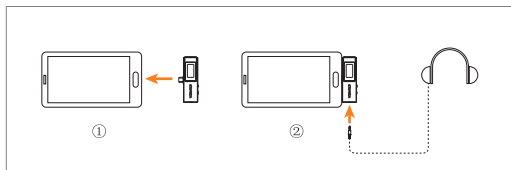
### 2.In Duplex Mode

- ① Switch the S ↑ /OFF/D ↑ ↓ switch button to D ↑ ↓  
(Duplex mode)
- ② Install the transmitter on the collar so that the internal mic points to the sound source
- ③ Insert the headphone into the monitoring port to monitor

## Receiver (RX)

### 1. USB Digital Output Mode

#### ① USB-C device

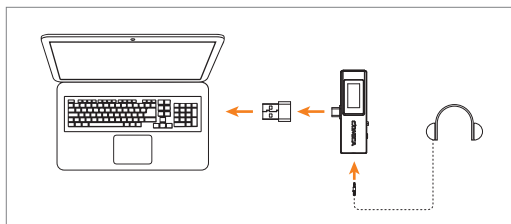


.Insert the receiver to the USB-C device

.You can choose to whether insert the headphone to monitor or not based on your needs

---

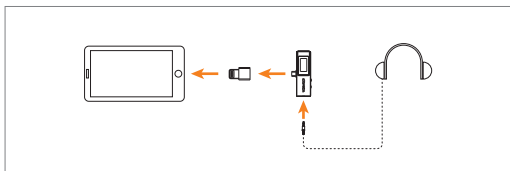
#### ② USB-A device



.Connect the receiver and USB-A device via the USB C-USB A adapter

.You can choose to whether insert the headphone to monitor or not based on your needs

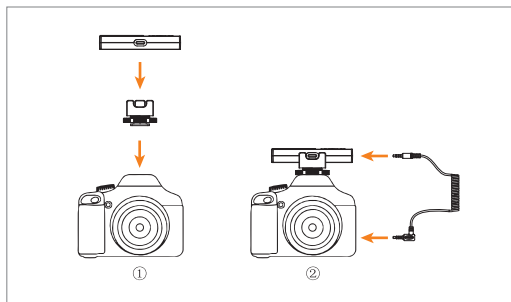
### ③ Lightning device



- . Connect the receiver and Lightning device via the USB C -Lightning adapter(Please purchase USB C-Lightning adapter by yourself)
- . You can choose to whether insert the headphone to monitor or not based on your needs

## 2. 3.5mm Analog Output Mode

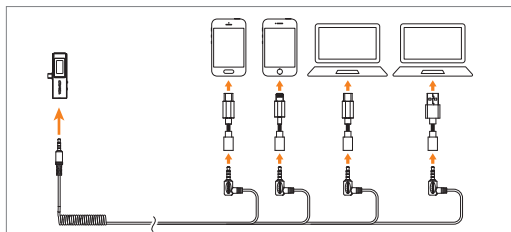
### ① 3.5mm TRS camera



- . Mount the receiver to the camera through the cold shoe mount
- . Connect the receiver and camera via 3.5mm TRRS-TRRS audio cable or 3.5mm TRS-TRS audio cable (Please purchase 3.5mm TRS-TRS audio cable by yourself)

☞ Some cameras are not compatible with 3.5mm TRRS-TRRS audio cable, it's necessary to purchase 3.5mm TRS-TRS audio cable by yourself

## ② USB devices



- . Work with USB devices via corresponding adapter  
(Please purchase adapter by yourself)



# Specification

Wireless Type	2.4GHz
Antenna	Ceramic Antenna
Polar Pattern	Omnidirectional
Frequency Response	80Hz ~ 20kHz
S/N	>60dB
SPL	Internal Mic: 120dB External Mic: 110dB
Dynamic Range	Internal Mic: 86dB External Mic: 86dB
Sound Delay	<20ms
Sensitivity	Internal Mic: -26dBFS±1dB External Mic: -32dB±2dB
Interface	TX: 3.5mm RX: USB-C & 3.5mm Charging Case: USB-C
Battery	TX:90mAh 3.7V RX:90mAh 3.7V Charging Case: 1000mAh 3.7V
Charging Time	TX: 2 Hours RX: 2 Hours Charging Case: 4 Hours
Standby Time	TX: 4 Hours RX: 4 Hours Charging Case:3 times for two transmitters and one receiver charged simultaneously
Net Weight	TX:14g RX: 20g Charging Case: 167g
Dimension	TX: 20x53x21 mm RX: 33x76x13 mm Charging Case: 96x99x37 mm
Operating Temperature	0℃ ~ 50℃
Storage Temperature	-20℃ ~ 60℃



[www.7ryms.com](http://www.7ryms.com)

Email: [support@7ryms.com](mailto:support@7ryms.com)

The 7RYMS LOGO is trademark which is registered and owned by Errun Electronic Technology Co., Ltd

**FCC Statement**

This device complies with part 15 of the FCC rules. Operation is subject to the following two conditions: (1) this device may not cause harmful interference, and (2) this device must accept any interference received, including interference that may cause undesired operation.

Changes or modifications not expressly approved by the party responsible for compliance could void the user's authority to operate the equipment.

NOTE: This equipment has been tested and found to comply with the limits for a Class B digital device, pursuant to part 15 of the FCC Rules. These limits are designed to provide reasonable protection against harmful interference in a residential installation. This equipment generates uses and can radiate radio frequency energy and, if not installed and used in accordance with the instructions, may cause harmful interference to radio communications. However, there is no guarantee that interference will not occur in a particular installation. If this equipment does cause harmful interference to radio or television reception, which can be determined by turning the equipment off and on, the user is encouraged to try to correct the interference by one or more of the following measures:

- Reorient or relocate the receiving antenna.
- Increase the separation between the equipment and receiver.
- Connect the equipment into an outlet on a circuit different from that to which the receiver is connected.
- Consult the dealer or an experienced radio/TV technician for help.

The device has been evaluated to meet general RF exposure requirement. The device can be used in portable exposure condition without restriction.

#### ISED Statement

- English: This device complies with Industry Canada license - exempt RSS standard(s). Operation is subject to the following two conditions: (1) This device may not cause interference, and (2) This device must accept any interference, including interference that may cause undesired operation of the device.

The digital apparatus complies with Canadian CAN ICES - 3 (B)/NMB - 3(B).

- French: Le présent appareil est conforme aux CNR d'Industrie Canada applicables aux appareils radio exempts de licence. L'exploitation est autorisée aux deux conditions suivantes: (1) l'appareil ne doit pas produire de brouillage, et (2) l'utilisateur de l'appareil doit accepter tout brouillage radioélectrique subi, même si le brouillage est susceptible d'en compromettre le fonctionnement.

l'appareil numérique du CIEM conforme canadien peut - 3 (b) / NMB - 3 (b).

This device meets the exemption from the routine evaluation limits in section 2.5 of RSS 102 and compliance with RSS 102 RF exposure, users can obtain Canadian information on RF exposure and compliance.

cet appareil est conforme à l'exemption des limites d'évaluation courante dans la section 2.5 du CNR - 102 et conformité avec RSS 102 de l'exposition aux RF, les utilisateurs peuvent obtenir des données canadiennes sur l'exposition aux champs RF et la conformité.