

FCC Part 95 Rules Test Report

Report No.:AGC02931181201FE10

FCC ID : POD-GMRS5
PRODUCT DESIGNATION : Analog Transceiver
BRAND NAME : TYT
MODEL NAME : TH-UVF8
CLIENT : TYT Electronics Co., Ltd.
DATE OF ISSUE : Apr. 04, 2019
STANDARD(S) : FCC Part 95 Rules
REPORT VERSION : V 1.0

Attestation of Global Compliance (Shenzhen) Co., Ltd

CAUTION:

This report shall not be reproduced except in full without the written permission of the test laboratory and shall not be quoted out of context.



The results shown in this test report refer only to the sample(s) tested unless otherwise stated and the sample(s) are retained for 30 days only. The document is issued by AGC, this document cannot be reproduced except in full with our prior written permission. The more details and the authenticity of the report will be confirmed at <http://www.agc-cert.com>.

Report Revise Record

Report Version	Revise Time	Issued Date	Valid Version	Notes
V1.0	/	Apr. 04, 2019	Valid	Initial release

The results shown in this test report refer only to the sample(s) tested unless otherwise stated and the sample(s) are retained for 30 days only. The document is issued by AGC, this document cannot be reproduced except in full with our prior written permission. The more details and the authenticity of the report will be confirmed at <http://www.agc-cert.com>.

VERIFICATION OF COMPLIANCE

Applicant	TYT Electronics Co., Ltd.
Address	Block 39-1, Optoelectronics-information industry base, Nan'an, Quanzhou, Fujian, China.
manufacturer	TYT Electronics Co., Ltd.
Address	Block 39-1, Optoelectronics-information industry base, Nan'an, Quanzhou, Fujian, China.
Factory	TYT Electronics Co., Ltd.
Address	Block 39-1, Optoelectronics-information industry base, Nan'an, Quanzhou, Fujian, China.
Product Designation:	Analog Transceiver
Brand Name:	TYT
Test Model	TH-UVF8
Date of Test:	Jan.19 , 2019~Apr. 04, 2019

WE HEREBY CERTIFY THAT:

The above equipment was tested by Attestation of Global Compliance (Shenzhen) Co., Ltd. The data evaluation, test procedures, and equipment configurations shown in this report were made in accordance with the procedures given in TIA/EIA 603. The sample tested as described in this report is in compliance with the FCC Rules Part 95 requirements. The test results of this report relate only to the tested sample identified in this report.

Tested By



Calvin Liu(Liu Junchen)

Apr. 04, 2019

Reviewed By



Max Zhang(Zhang Yi)

Apr. 04, 2019

Approved By



Forrest Lei(Lei Yonggang)

Authorized Officer

Apr. 04, 2019

The results shown in this test report refer only to the sample(s) tested unless otherwise stated and the sample(s) are retained for 30 days only. The document is issued by AGC, this document cannot be reproduced except in full with our prior written permission. The more details and the authenticity of the report will be confirmed at <http://www.agc-cert.com>.

TABLE OF CONTENTS

1. GENERAL INFORMATION.....	6
1.1 PRODUCT DESCRIPTION.....	6
1.2 RELATED SUBMITTAL(S) / GRANT (S).....	8
1.3 TEST METHODOLOGY.....	8
1.4 TEST FACILITY.....	8
1.5 SPECIAL ACCESSORIES.....	8
1.6 EQUIPMENT MODIFICATIONS.....	8
2. SYSTEM TEST CONFIGURATION	9
2.1 EUT CONFIGURATION.....	9
2.2 EUT EXERCISE.....	9
2.4 CONFIGURATION OF TESTED SYSTEM.....	10
3. SUMMARY OF TEST RESULTS	10
4. DESCRIPTION OF TEST MODES.....	12
5. FREQUENCY TOLERANCE.....	13
5.1 PROVISIONS APPLICABLE.....	13
5.2 MEASUREMENT PROCEDURE.....	13
5.3 TEST SETUP BLOCK DIAGRAM.....	14
5.4 TEST RESULT.....	14
6. EMISSION BANDWIDTH.....	16
6.1 PROVISIONS APPLICABLE.....	16
6.2 MEASUREMENT PROCEDURE.....	16
6.3 TEST SETUP BLOCK DIAGRAM.....	16
6.4 MEASUREMENT RESULT.....	18
7. UNWANTED RADIATION.....	22
7.1 PROVISIONS APPLICABLE.....	22
7.2 MEASUREMENT PROCEDURE.....	22
7.3 TEST SETUP BLOCK DIAGRAM.....	23
7.4 MEASUREMENT RESULTS:.....	24
7.5 EMISSION MASK PLOT.....	29
8. AUDIO LOW PASS FILTER RESPONSE.....	33
8.1. PROVISIONS APPLICABLE.....	33
8.2. TEST PROCEDURE.....	33
8.3 TEST CONFIGURATION.....	33
8.4 TEST RESULT.....	34

The results shown in this test report refer only to the sample(s) tested unless otherwise stated and the sample(s) are retained for 30 days only. The document is issued by AGC, this document cannot be reproduced except in full with our prior written permission. The more details and the authenticity of the report will be confirmed at <http://www.agc-cert.com>.

9. MAXIMUM TRANSMITTER POWER	35
9.1 PROVISIONS APPLICABLE.....	35
9.2 TEST PROCEDURE	35
9.3 TEST CONFIGURATION.....	36
8.4 TEST RESULT.....	38
10. MODULATION CHARACTERISTICS	39
10.1 PROVISIONS APPLICABLE.....	39
10.2 MEASUREMENT METHOD.....	39
10.3 MEASUREMENT RESULT	40
APPENDIX I: PHOTOGRAPHS OF SETUP	43
APPENDIX II: EXTERNAL VIEW OF EUT	44

The results shown in this test report refer only to the sample(s) tested unless otherwise stated and the sample(s) are retained for 30 days only. The document is issued by AGC, this document cannot be reproduced except in full with our prior written permission. The more details and the authenticity of the report will be confirmed at <http://www.agc-cert.com>.

1. GENERAL INFORMATION

1.1 PRODUCT DESCRIPTION

The EUT is a **Analog Transceiver** designed for voice communication. It is designed by way of utilizing the FM modulation achieves the system operating.

A major technical description of EUT is described as following:

Product Designation	Analog Transceiver
Test Model	TH-UVF8
Hardware Version	TH-UVF8A VER1.2
Software Version	V2.1
Modulation	FM
Channel Separation	12.5KHz
Emission Type	F3E
Emission Bandwidth	10.686KHz
Maximum Transmitter Power	29.75dBm
Rated Output power	1W/0.5W (It was fixed by the manufacturer, any individual can't arbitrarily change it.)
Antenna Designation	Inseparable
Antenna Gain	1.5dBi
Power Supply	DC 7.4V, 1600mAh (by battery)
Limiting Voltage	DC 6.29 V-8.51 V
Operation Frequency Range and Channel	GMRS: 462.5625MHz -462.7125MHz(1W/0.5W) 462.5500MHz -462.7250MHz(1W/0.5W) 467.5500MHz -467.7250MHz(0.5W) Test Channel :4, 11 and 19 channel
Frequency Tolerance	1.101ppm

The results shown in this test report refer only to the sample(s) tested unless otherwise stated and the sample(s) are retained for 30 days only. The document is issued by AGC, this document cannot be reproduced except in full with our prior written permission. The more details and the authenticity of the report will be confirmed at <http://www.agc-cert.com>.

Channel List:

CH. No	CH. Freq	Power	CH. No	CH. Freq	Power
1	462.5625	0.5W/1W	13	462.6750	0.5W/1W
2	462.5875		14	462.7000	
3	462.6125		15	462.7250	
4	462.6375		16	467.5500	0.5W
5	462.6625		17	467.5750	
6	462.6875		18	467.6000	
7	462.7125		19	467.6250	
8	462.5500	0.5W/1W	20	467.6500	
9	462.5750		21	467.6750	
10	462.6000		22	467.7000	
11	462.6250		23	467.7250	
12	462.6500				

The results shown in this test report refer only to the sample(s) tested unless otherwise stated and the sample(s) are retained for 30 days only. The document is issued by AGC, this document cannot be reproduced except in full with our prior written permission. The more details and the authenticity of the report will be confirmed at <http://www.agc-cert.com>.

1.2 RELATED SUBMITTAL(S) / GRANT (S)

This submittal(s) (test report) is intended for FCC ID:**POD-GMRS5**, filing to comply with the FCC Part 95 requirements.

1.3 TEST METHODOLOGY.

The radiated emission testing was performed according to the procedures of TIA/EIA 603.

1.4 TEST FACILITY

Test Site	Attestation of Global Compliance (Shenzhen) Co., Ltd
Location	1-2/F, Building 19, Junfeng Industrial Park, Chongqing Road, Heping Community, Fuhai Street, Bao'an District, Shenzhen, Guangdong, China
Designation Number	CN1259
FCC Test Firm Registration Number	975832
A2LA Cert. No.	5054.02
Description	Attestation of Global Compliance(Shenzhen) Co., Ltd is accredited by A2LA

1.5 SPECIAL ACCESSORIES

Not available for this EUT intended for grant.

1.6 EQUIPMENT MODIFICATIONS

Not available for this EUT intended for grant.

The results shown in this test report refer only to the sample(s) tested unless otherwise stated and the sample(s) are retained for 30 days only. The document is issued by AGC, this document cannot be reproduced except in full with our prior written permission. The more details and the authenticity of the report will be confirmed at <http://www.agc-cert.com>.

2. SYSTEM TEST CONFIGURATION

2.1 EUT CONFIGURATION

The EUT configuration for testing is installed on RF field strength measurement to meet the Commission's requirement and operating in a manner which intends to maximize its emission characteristics in a continuous normal application.

2.2 EUT EXERCISE

The Transmitter was operated in the normal operating mode. The TX frequency was fixed which was for the purpose of the measurements.

The results shown in this test report refer only to the sample(s) tested unless otherwise stated and the sample(s) are retained for 30 days only. The document is issued by AGC, this document cannot be reproduced except in full with our prior written permission. The more details and the authenticity of the report will be confirmed at <http://www.agc-cert.com>.

2.4 CONFIGURATION OF TESTED SYSTEM

Fig. 2-1 Configuration of Tested System



Table 2-1 Equipment Used in Tested System

Item	Equipment	Model No.	Identifier	Note
1	Analog Transceiver	TH-UVF8	FCC ID: POD-GMRS5	EUT

3. SUMMARY OF TEST RESULTS

FCC 47 CFR Part 95 Test Cases			
Test Item	Test Requirement	Test Method	Result
Maximum Transmitter Power	FCC CFR Part 95.1767 FCC 47 CFR Part 2.1046(a)	ANSI/TIA-603-E-2016	PASS
Modulation Limit	FCC CFR Part 95.1775 FCC 47 CFR Part 2.1047(a)(b)	ANSI/TIA-603-E-2016	PASS
Audio Frequency Response	FCC CFR Part 95.1775 FCC 47 CFR Part 2.1047(a)	ANSI/TIA-603-E-2016	PASS
Audio Low Pass Filter Response	FCC 47 CFR Part 95.1775(e)	ANSI/TIA-603-E-2016	PASS
Emission Bandwidth	FCC CFR Part 95.1773	ANSI/TIA-603-E-2016	PASS
Emission Mask	FCC CFR Part 95.1779	ANSI/TIA-603-E-2016	PASS
Transmitter Radiated Spurious Emission	FCC CFR Part 95.1779	ANSI/TIA-603-E-2016	PASS
Frequency Stability	FCC CFR Part 95.1765 FCC 47 CFR Part 2.1055 (a)(1)	ANSI/TIA-603-E-2016	PASS
Note: 1) N/A: In this whole report not application. 2) The EUT is External antenna			

The results shown in this test report refer only to the sample(s) tested unless otherwise stated and the sample(s) are retained for 30 days only. The document is issued by AGC, this document cannot be reproduced except in full with our prior written permission. The more details and the authenticity of the report will be confirmed at <http://www.agc-cert.com>.

LIST OF EQUIPMENTS USED

Equipment	Manufacturer	Model	S/N	Cal. Date	Cal. Due
TEST RECEIVER	R&S	ESCI	10096	Jun. 12, 2018	Jun. 11, 2019
EXA Signal Analyzer	Agilent	N9010A	MY53470504	Dec. 20, 2018	Dec. 19, 2019
Horn antenna	SCHWARZBECK	BBHA 9170	#768	Sep.18, 2018	Sep.17, 2019
preamplifier	ChengYi	EMC184045SE	980508	Oct.31, 2018	Oct 30, 2019
Double-Ridged Waveguide Horn	ETS LINDGREN	3117	00034609	May. 26, 2018	May. 25, 2020
Broadband Preamplifier	SCHWARZBECK	BBV 9718	9718-205	Jun. 12, 2018	Jun. 11, 2019
HORN ANTENNA	EM	EM-AH-10180	/	Mar.01, 2018	Feb.29, 2020
SIGNAL GENERATOR	AGILENT	E4421B	122501288	May. 15, 2018	May. 14, 2019
SIGNAL GENERATOR	R&S	SMT03	A0304261	Jun. 12, 2018	Jun. 11, 2019
ANTENNA	SCHWARZBECK	VULB9168	VULB9168-494	Jan. 09, 2019	Jan. 08, 2020
ANTENNA	SCHWARZBECK	VULB9168	D69250	Sep.26, 2018	Sep.25, 2019
Modulation Domain Analyzer	HP	53310A	3121A02467	Nov. 01, 2018	Oct. 31, 2019
Small environmental tester	ESPEC	SH-242	--	Feb. 27, 2018	Feb. 26, 2019
RF Communication Test Set	HP	8920B	--	Jun. 12, 2018	Jun. 11, 2019
Loop Antenna	LAPLACE	RF300	--	Feb. 21, 2018	Feb. 20, 2019
Loop Antenna	LAPLACE	RF300	--	Feb. 19, 2019	Feb. 18, 2020
Attenuator	JFW	50FHC-006-50	--	June 12, 2018	June 11, 2019
Vector Analyzer	Agilent	E4440A	--	Mar. 01, 2018	Feb. 28, 2019
Vector Analyzer	Agilent	E4440A	--	Feb. 27, 2019	Feb. 26, 2020
RF Cable	R&S	1#	--	Each time	N/A
RF Cable	R&S	2#	--	Each time	N/A

Note: 8920B can generate audio modulation frequency.

 The results shown in this test report refer only to the sample(s) tested unless otherwise stated and the sample(s) are retained for 30 days only. The document is issued by AGC, this document cannot be reproduced except in full with our prior written permission. The more details and the authenticity of the report will be confirmed at <http://www.agc-cert.com>.

4. DESCRIPTION OF TEST MODES

RF TEST MODES

The EUT (Analog Transceiver) has been tested under normal operating condition. (GMRS TX) are chosen for testing at each channel separation.

No.	TEST MODES	CHANNEL SEPARATION
1	GMRS TX	12.5 KHz

Note: Only the result of the worst case was recorded in the report.

The results shown in this test report refer only to the sample(s) tested unless otherwise stated and the sample(s) are retained for 30 days only. The document is issued by AGC, this document cannot be reproduced except in full with our prior written permission. The more details and the authenticity of the report will be confirmed at <http://www.agc-cert.com>.

5. FREQUENCY TOLERANCE

5.1 PROVISIONS APPLICABLE

Standard Applicable [Part 95.1765] The carrier frequency stability is the ability of the transmitter to maintain an assigned carrier frequency.

FCC Part 95.1765,

GMRS: The carrier frequency of each GMRS transmitter transmitting an emission with an occupied bandwidth of 12.5 kHz or less must remain within 2.5 ppm

The carrier frequency of each GMRS transmitter transmitting an emission with an occupied bandwidth greater than 12.5 kHz must remain within 5 ppm

5.2 MEASUREMENT PROCEDURE

5.2.1 Frequency stability versus environmental temperature

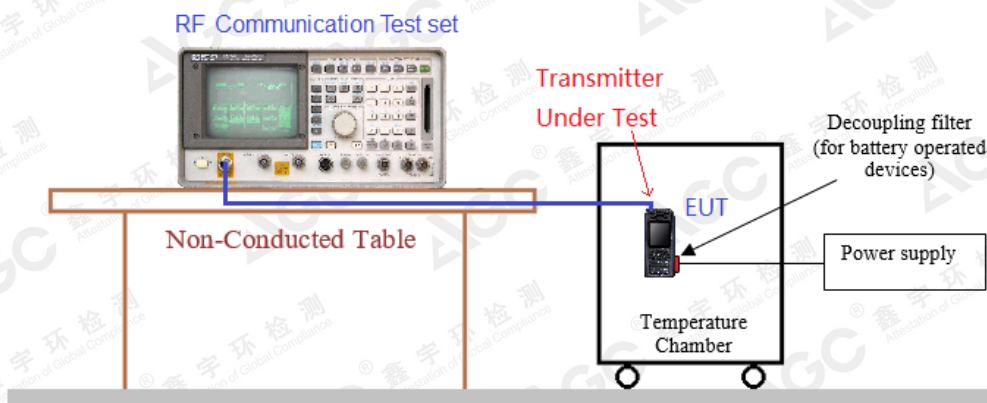
1. Setup the configuration per figure 1 for frequencies measurement inside an environment chamber, Install new battery in the EUT.
2. Turn on EUT and set SA center frequency to the EUT radiated frequency. Set SA Resolution Bandwidth to 1KHz and Video Resolution Bandwidth to 1KHz and Frequency Span to 50KHz. Record this frequency as reference frequency.
3. Set the temperature of chamber to 50°C. Allow sufficient time (approximately 30 min) for the temperature of the chamber to stabilize. While maintaining a constant temperature inside the chamber, turn the EUT on and measure the EUT operating frequency.
4. Repeat step 2 with a 10°C decreased per stage until the lowest temperature -30°C is measured, record all measured frequencies on each temperature step.

5.2.2 Frequency stability versus input voltage

1. Setup the configuration per figure 1 for frequencies measured at temperature if it is within 15°C to 25°C.
Otherwise, an environment chamber set for a temperature of 20°C shall be used. The EUT shall be powered by DC 7.4V.
2. Set SA center frequency to the EUT radiated frequency. Set SA Resolution Bandwidth to 1 KHz and Video Resolution Bandwidth to 1KHz. Record this frequency as reference frequency.
3. Supply the EUT primary voltage at the operating end point which is specified by manufacturer and record the frequency.

The results shown in this test report refer only to the sample(s) tested unless otherwise stated and the sample(s) are retained for 30 days only. The document is issued by AGC, this document cannot be reproduced except in full with our prior written permission. The more details and the authenticity of the report will be confirmed at <http://www.agc-cert.com>.

5.3 TEST SETUP BLOCK DIAGRAM



5.4 TEST RESULT

(1) Frequency stability versus input voltage (Supply nominal voltage is 7.40V)

Environment Temperature (°C)	Power	Reference Frequency			Limit:
	(V)	462.6375MHz	462.6250MHz	467.6250MHz	ppm
50	DC 7.40V	0.710	1.095	0.573	±2.5for GMRS
40	DC 7.40V	0.947	1.035	0.838	
30	DC 7.40V	0.573	0.720	0.558	
20	DC 7.40V	0.637	0.843	0.864	
10	DC 7.40V	0.772	0.706	0.650	
0	DC 7.40V	0.692	0.666	0.872	
-10	DC 7.40V	0.698	1.041	1.073	
-20	DC 7.40V	1.086	0.869	0.860	
-30	DC 7.40V	0.945	0.519	0.526	
Result	Pass				

The results shown in this test report refer only to the sample(s) tested unless otherwise stated and the sample(s) are retained for 30 days only. The document is issued by AGC, this document cannot be reproduced except in full with our prior written permission. The more details and the authenticity of the report will be confirmed at <http://www.agc-cert.com>.

(2) Frequency stability versus input voltage (Battery limiting voltage is 6.29V)

Environment Temperature (°C)	Power	Reference Frequency			Limit:
	(V)	462.6375MHz	462.6250MHz	467.6250MHz	ppm
50	DC 6.29V	0.630	0.775	0.855	±2.5for GMRS
40	DC 6.29V	0.528	0.616	0.593	
30	DC 6.29V	1.051	0.900	0.545	
20	DC 6.29V	0.505	0.568	0.680	
10	DC 6.29V	0.590	1.028	0.713	
0	DC 6.29V	0.694	0.987	0.918	
-10	DC 6.29V	0.697	0.897	0.669	
-20	DC 6.29V	0.647	0.532	0.979	
-30	DC 6.29V	1.009	0.726	1.101	
Result	Pass				

(3) Frequency stability versus input voltage (Battery Fully Charged voltage is 8.51V)

Environment Temperature(°C)	Power	Reference Frequency			Limit:
	(V)	462.6375MHz	462.6250MHz	467.6250MHz	ppm
50	DC 8.51V	0.764	0.864	0.922	±2.5for GMRS
40	DC 8.51V	0.861	0.780	0.796	
30	DC 8.51V	0.578	0.717	0.671	
20	DC 8.51V	1.020	0.985	0.666	
10	DC 8.51V	0.723	0.769	0.961	
0	DC 8.51V	0.681	0.716	0.831	
-10	DC 8.51V	0.835	0.748	0.852	
-20	DC 8.51V	0.607	0.918	1.012	
-30	DC 8.51V	1.007	0.813	0.726	
Result	Pass				

The results shown in this test report refer only to the sample(s) tested unless otherwise stated and the sample(s) are retained for 30 days only. The document is issued by AGC, this document cannot be reproduced except in full with our prior written permission. The more details and the authenticity of the report will be confirmed at <http://www.agc-cert.com>.

6. EMISSION BANDWIDTH

6.1 PROVISIONS APPLICABLE

FCC Part 95.1773: GMRS:

- (a) Main channels. The authorized bandwidth is 20 kHz for GMRS transmitters operating on any of the 462 MHz main channels, or any of the 467 MHz main channels.
- (b) Interstitial channels. The authorized bandwidth is 20 kHz for GMRS transmitters operating on any of the 462 MHz interstitial channels, and is 12.5 kHz for GMRS transmitters operating on any of the 467 MHz interstitial channels.

Occupied Bandwidth: The EUT was connected to the audio signal generator and the spectrum analyzer via the main RF connector, and through an appropriate attenuator. The EUT was controlled to transmit its maximum power. Then the bandwidth of 99% power can be measured by the spectrum analyzer.

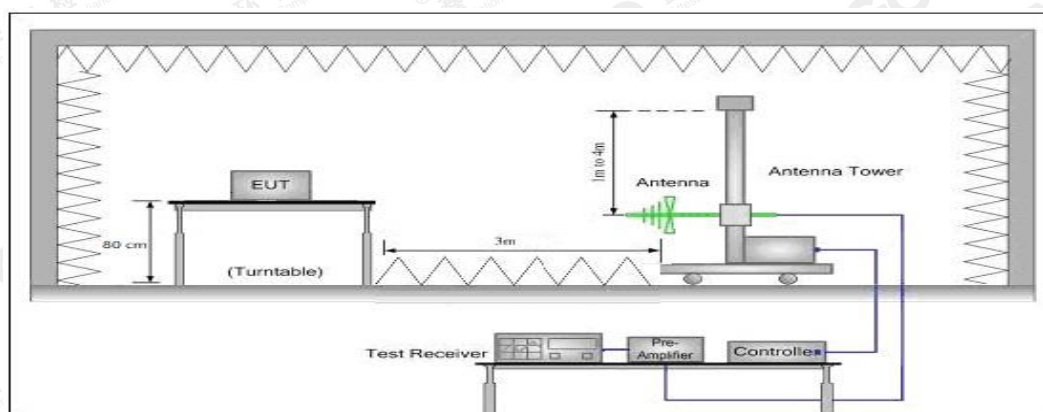
6.2 MEASUREMENT PROCEDURE

- 1). The EUT was modulated by 2.5 KHz Sine wave audio signal, The level of the audio signal employed is 16 dB greater than that necessary to produce 50% of rated system deviation. Rated system deviation is 2.5 kHz (12.5 kHz channel spacing).
- 2). Set SPA Center Frequency = fundamental frequency, RBW=300Hz.VBW= 100 Hz, Span =50 KHz.
- 3). Set SPA Max hold. Mark peak, -26 dB.

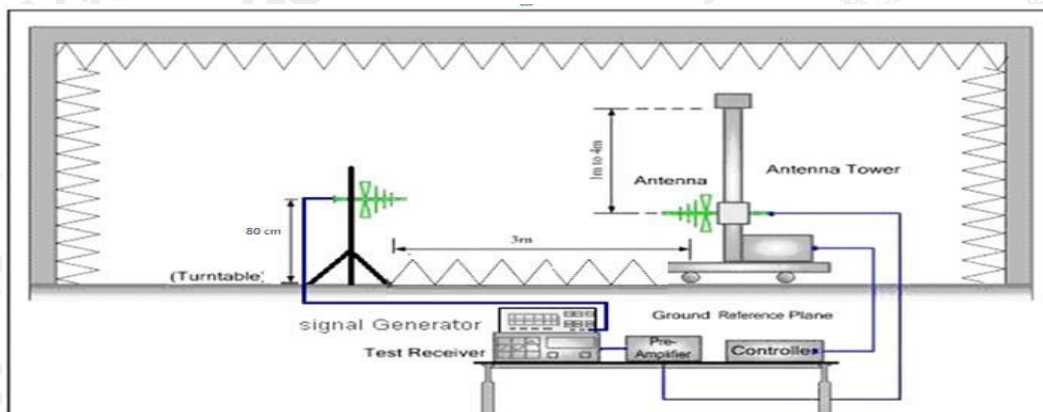
6.3 TEST SETUP BLOCK DIAGRAM

Radiation method:

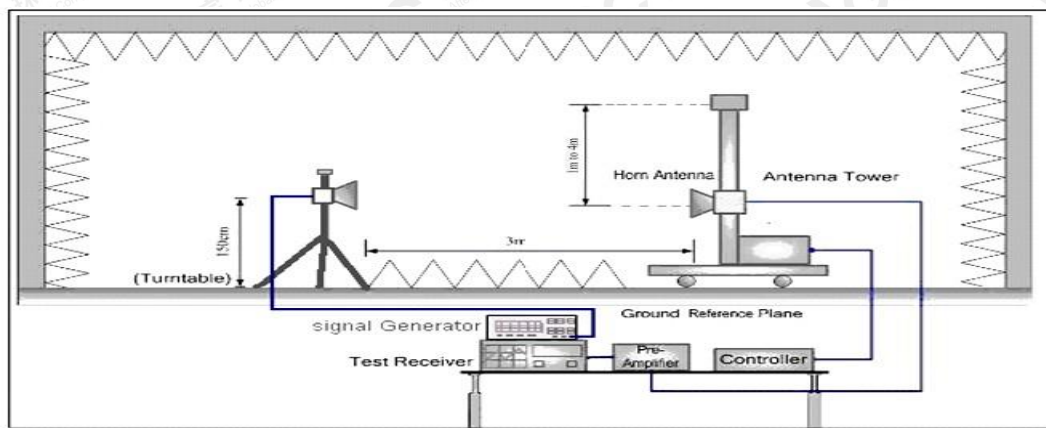
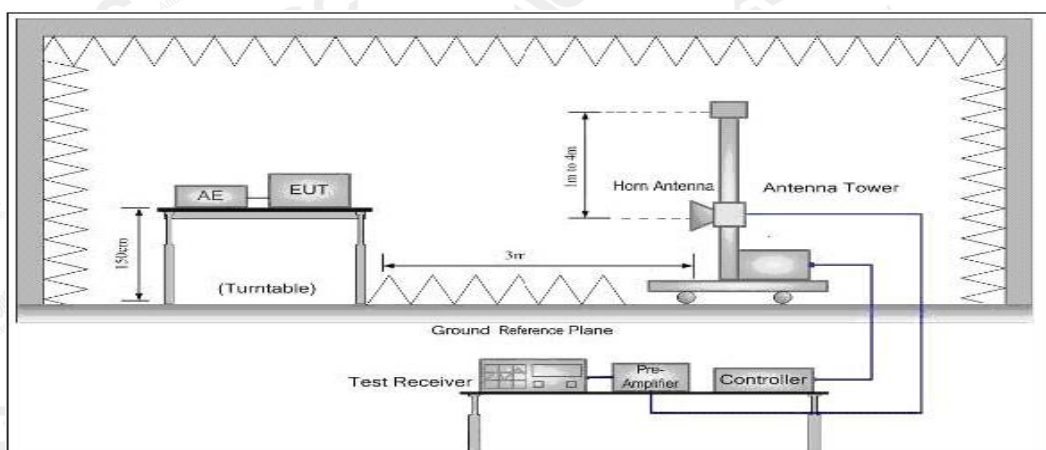
Radiated Below1GHz



The results shown in this test report refer only to the sample(s) tested unless otherwise stated and the sample(s) are retained for 30 days only. The document is issued by AGC, this document cannot be reproduced except in full with our prior written permission. The more details and the authenticity of the report will be confirmed at <http://www.agc-cert.com>.

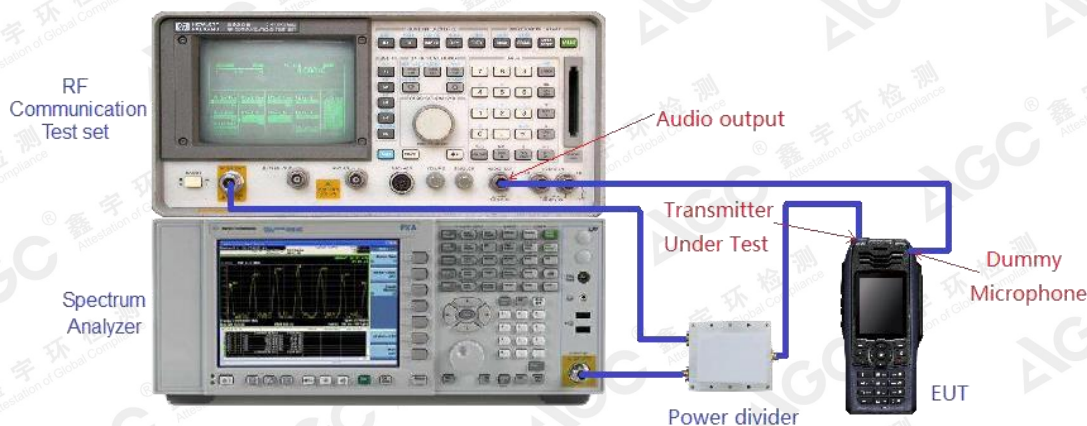


Radiated Above 1 GHz



The results shown in this test report refer only to the sample(s) tested unless otherwise stated and the sample(s) are retained for 30 days only. The document is issued by AGC, this document cannot be reproduced except in full with our prior written permission. The more details and the authenticity of the report will be confirmed at <http://www.agc-cert.com>.

Conduction method:

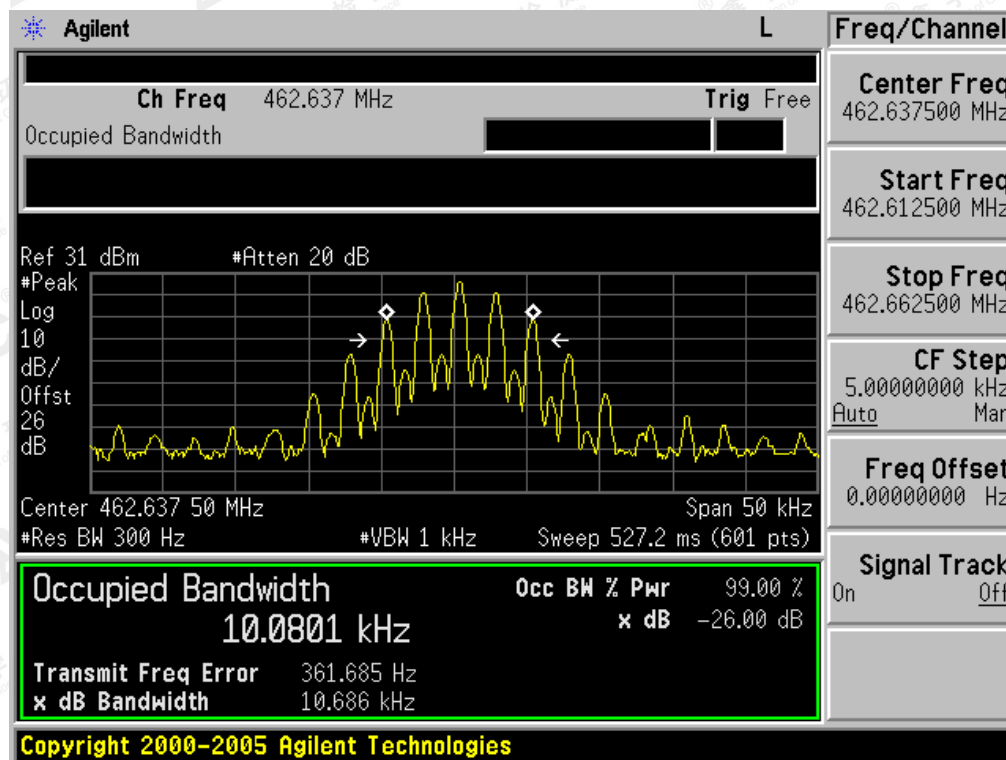


6.4 MEASUREMENT RESULT

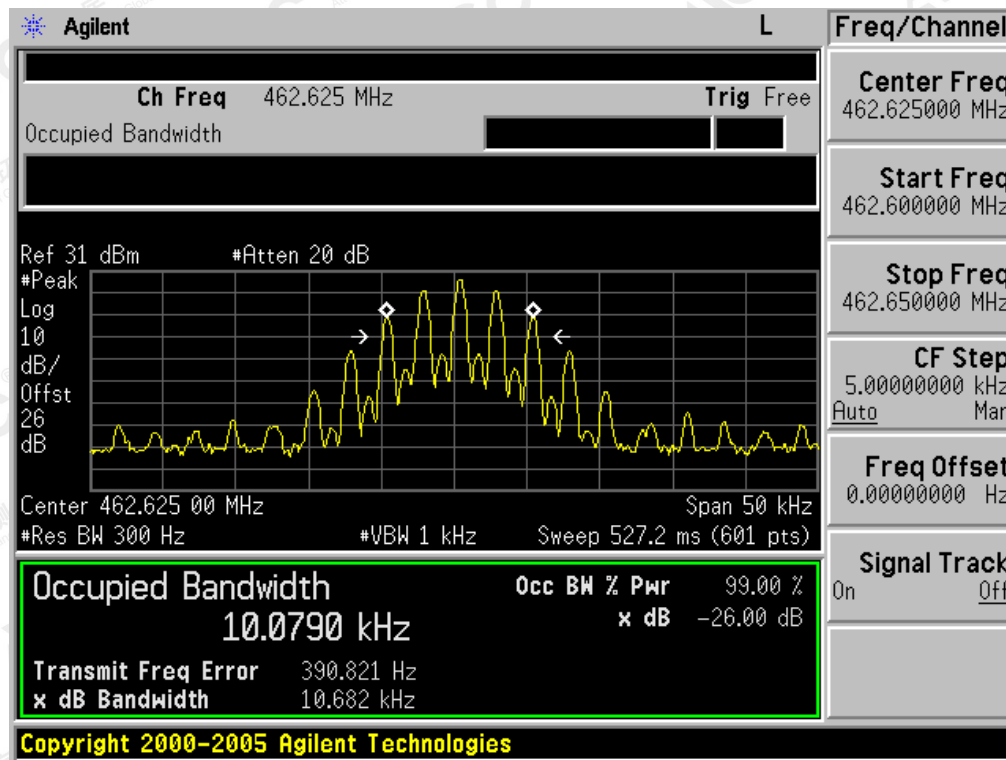
26 dB Bandwidth Measurement Result-1W			
Operating Frequency	12.5 KHz Channel Separation		
	Test Data	Limits	Result
462.6375MHz	10.686 KHz	12.5 KHz	Pass
462.6250MHz	10.682 KHz	12.5 KHz	Pass

The results shown in this test report refer only to the sample(s) tested unless otherwise stated and the sample(s) are retained for 30 days only. The document is issued by AGC, this document cannot be reproduced except in full with our prior written permission. The more details and the authenticity of the report will be confirmed at <http://www.agc-cert.com>.

Occupied bandwidth of 462.6375MHz



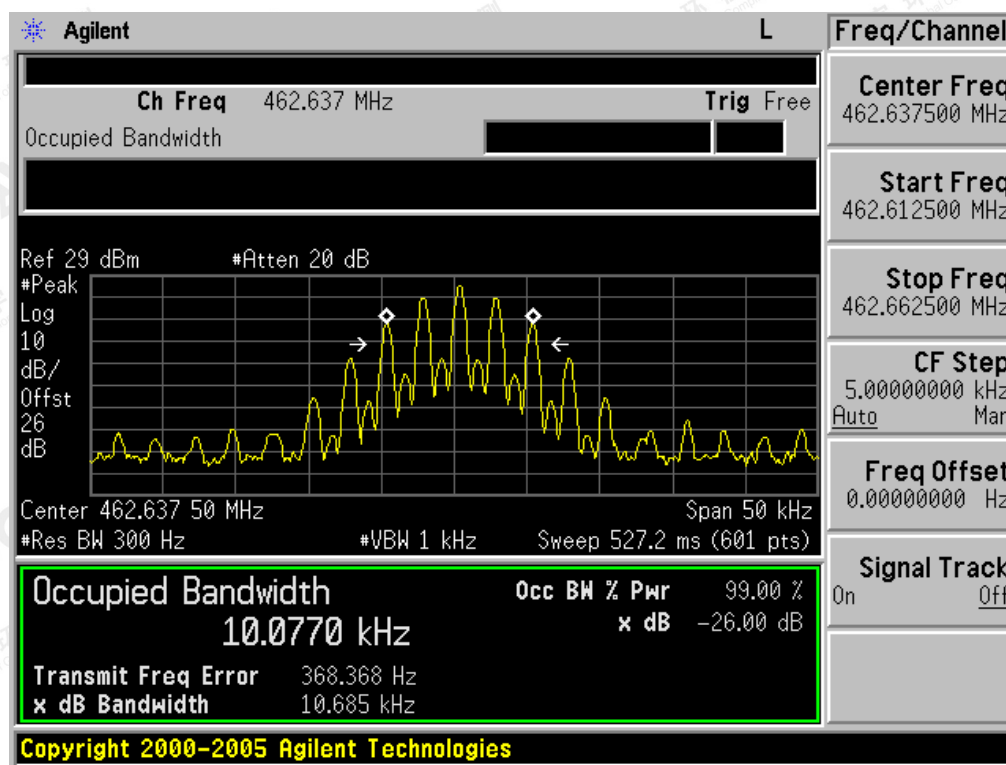
Occupied bandwidth of 462.6500MHz



The results shown in this test report refer only to the sample(s) tested unless otherwise stated and the sample(s) are retained for 30 days only. The document is issued by AGC, this document cannot be reproduced except in full with our prior written permission. The more details and the authenticity of the report will be confirmed at <http://www.agc-cert.com>.

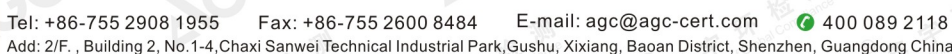
26 dB Bandwidth Measurement Result-0.5W			
Operating Frequency	12.5 KHz Channel Separation		
	Test Data	Limits	Result
462.6375MHz	10.685 KHz	12.5 KHz	Pass
462.6250MHz	10.675 KHz	12.5 KHz	Pass
467.6250MHz	10.666 KHz	12.5 KHz	Pass

Occupied bandwidth of 462.6375MHz



The results shown in this test report refer only to the sample(s) tested unless otherwise stated and the sample(s) are retained for 30 days only. The document is issued by AGC, this document cannot be reproduced except in full with our prior written permission. The more details and the authenticity of the report will be confirmed at <http://www.agc-cert.com>.

Occupied bandwidth of 467.6250MHz



7. UNWANTED RADIATION

7.1 PROVISIONS APPLICABLE

Standard Applicable [FCC Part 95.1779]

According to FCC section 95.1779, the unwanted emission should be attenuated below TP by at least $43+10 \log(\text{Transmit Power})$ dB.

7.2 MEASUREMENT PROCEDURE

Each GMRS transmitter type must be designed to comply with the applicable unwanted emissions limits in this section.

(a) Emission masks. Emission masks applicable to transmitting equipment in the GMRS are defined by the requirements in the following table. The numbers in the attenuation requirements column refer to rule paragraph numbers under paragraph (b) of this section.

Emission types filter	Attenuation requirements
A1D, A3E, F1D, G1D, F2D, F3E, G3E with audio filter	(1), (2), (7)
A1D, A3E, F1D, G1D, F3E, G3E without audio filter	(3), (4), (7)
H1D, J1D, R1D, H3E, J3E, R2E	(5), (6), (7)

(1) Filtering noted for GMRS transmitters refers to the requirement in §95.1775(e).

(2) Unwanted emission power may be measured as either mean power or peak envelope power, provided that the transmitter output power is measured the same way.

(b) Attenuation requirements. The power of unwanted emissions must be attenuated below the transmitter output power in Watts (P) by at least:

(1) 25 dB (decibels) on any frequency removed from the center of the authorized bandwidth by more than 50% up to and including 100% of the authorized bandwidth.

(2) 35 dB on any frequency removed from the center of the authorized bandwidth by more than 100% up to and including 250% of the authorized bandwidth.

(3) $83 \log(f_d \div 5)$ dB on any frequency removed from the center of the authorized bandwidth by a displacement frequency (f_d in kHz) of more than 5 kHz up to and including 10 kHz.

(4) $116 \log(f_d \div 6.1)$ dB or $50 + 10 \log(P)$ dB, whichever is the lesser attenuation, on any frequency removed from the center of the authorized bandwidth by a displacement frequency (f_d in kHz), of more than 10 kHz up to and including 250% of the authorized bandwidth.

(5) 25 dB on any frequency removed from the center of the authorized bandwidth by more than 50% up to and including 150% of the authorized bandwidth.

(6) 35 dB on any frequency removed from the center of the authorized bandwidth by more than 150% up to and including 250% of the authorized bandwidth.

(7) $43 + 10 \log(P)$ dB on any frequency removed from the center of the authorized bandwidth by more than 250%.

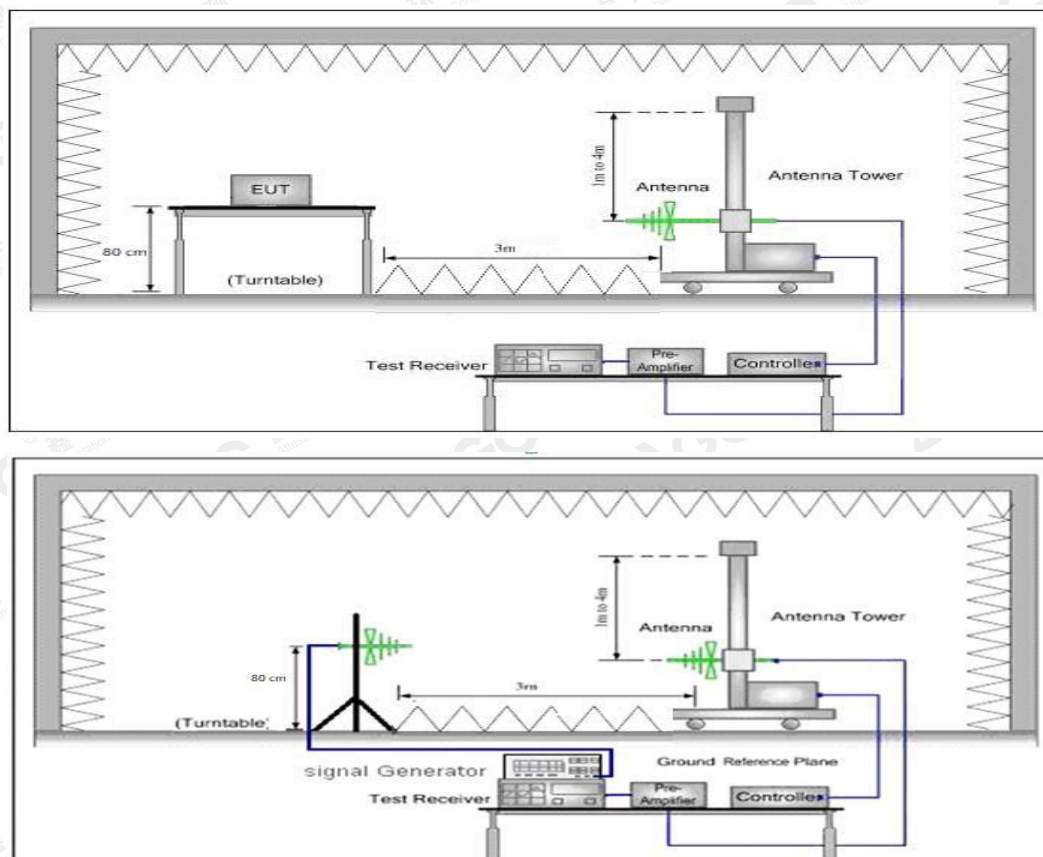
The results shown in this test report refer only to the sample(s) tested unless otherwise stated and the sample(s) are retained for 30 days only. The document is issued by AGC, this document cannot be reproduced except in full with our prior written permission. The more details and the authenticity of the report will be confirmed at <http://www.agc-cert.com>.

- (1) The spectrum setting for scanning Radiated Emission below 1 GHz is RBW = 100 kHz, VBW = 300 kHz and above 1 GHz is RBW = 1 MHz, VBW = 3 MHz. Detector mode is positive peak.
- (2) In the semi-anechoic chamber, setup as illustrated above the EUT placed on the 0.8m height (for frequencies < 1GHz) or 1.5m (for frequencies > 1GHz) of Turn Table, rotated the table around 360 degrees to search the maximum radiation power and receiver antenna shall be rotated vertical and horizontal polarization and moved height from 1m to 4m to find the maximum polar radiated power. The "Read Value" is the spectrum reading the maximum power value.
- (3) The substitution antenna is substituted for EUT at the same position and signals generator (S.G) export the CW signal to the substitution antenna via a TX cable. The receiver antenna shall be rotated vertical and horizontal polarization and moved height from 1m to 4m to find the maximum radiation power. Record the power level of maximum radiation power from spectrum. So, the measured substitution value = Ref level of S.G+ TX cables loss – Substituted Antenna Gain.
- (4) Final Radiated Spurious Emission = "Read Value" + Measured substitution value

7.3 TEST SETUP BLOCK DIAGRAM

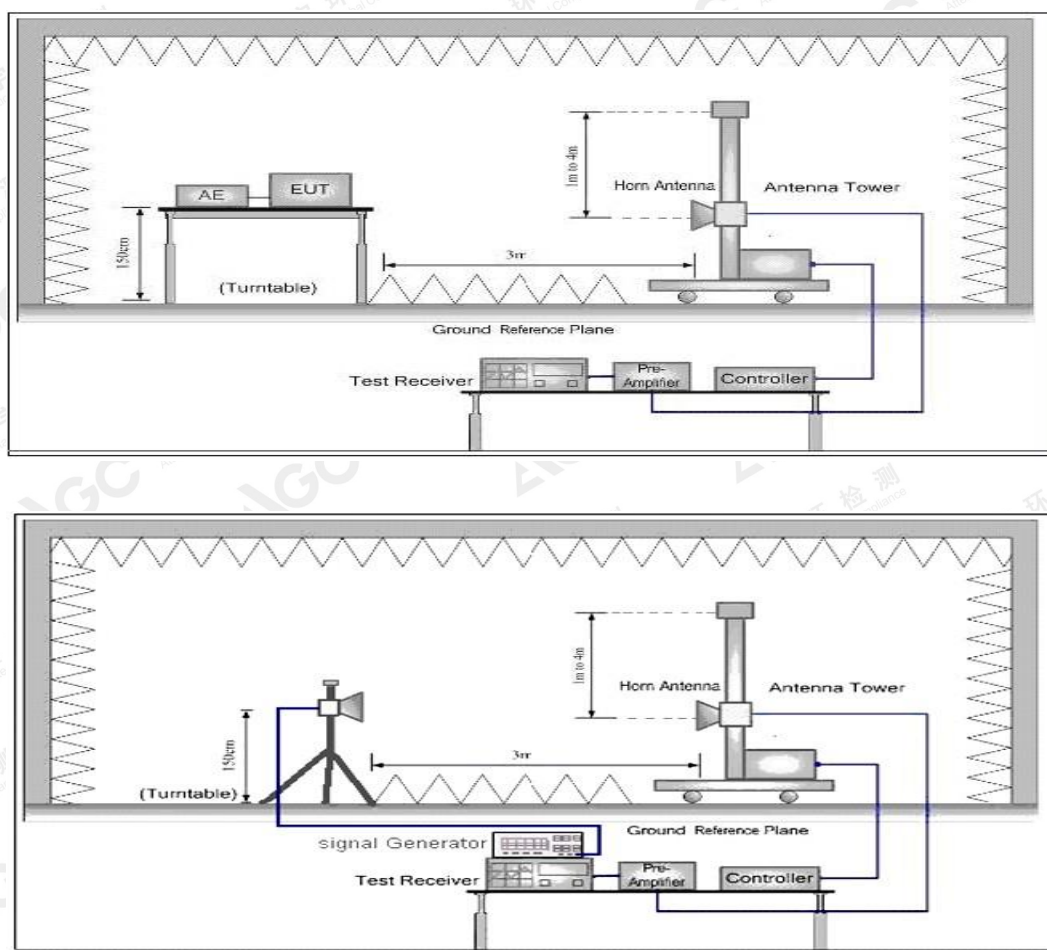
SUBSTITUTION METHOD: (Radiated Emissions)

Radiated Below 1GHz



The results shown in this test report refer only to the sample(s) tested unless otherwise stated and the sample(s) are retained for 30 days only. The document is issued by AGC, this document cannot be reproduced except in full with our prior written permission. The more details and the authenticity of the report will be confirmed at <http://www.agc-cert.com>.

Radiated Above 1 GHz



7.4 MEASUREMENT RESULTS:

the unwanted emission should be attenuated below TP by at least $43 + 10 \log(\text{Transmit Power})$ dB

Limit: At least $43 + 10 \log(P) = 43 + 10 \log(1) = 43$ (dBc) $30 - 43 = -13$ dBm

At least $43 + 10 \log(P) = 43 + 10 \log(0.5) = 40.01$ (dBc) $26.99 - 40.01 \approx -13$ dBm

The results shown in this test report refer only to the sample(s) tested unless otherwise stated and the sample(s) are retained for 30 days only. The document is issued by AGC, this document cannot be reproduced except in full with our prior written permission. The more details and the authenticity of the report will be confirmed at <http://www.agc-cert.com>.

Measurement Result for 12.5 KHz Channel Separation @ 462.6375MHz-1W

Emission Frequency (MHz)	Ant. Polarity(H/H)	Measurement Result (dBm)	Limit (dBm)	Result(P/F)
462.638	H	0		pass
925.275	H	-47.3	-13	pass
1387.91	H	-42.9	-13	pass
1850.550	H	-48.8	-13	pass
2313.188	H	-45.3	-13	pass
2775.825	H	-46.2	-13	pass
3238.463	H	-53.6	-13	pass
3701.100	H	-54.9	-13	pass
4163.738	H	-53.9	-13	pass
4626.375	H	-52.9	-13	pass

Emission Frequency (MHz)	Ant. Polarity(H/H)	Measurement Result (dBm)	Limit (dBm)	Result(P/F)
462.638	V	0		pass
925.275	V	-48.5	-13	pass
1387.91	V	-52.5	-13	pass
1850.550	V	-48.9	-13	pass
2313.188	V	-47.3	-13	pass
2775.825	V	-48.5	-13	pass
3238.463	V	-49.2	-13	pass
3701.100	V	-53.2	-13	pass
4163.738	V	-54.5	-13	pass
4626.375	V	-55.6	-13	pass

Measurement Result for 12.5 KHz Channel Separation @ 462.6375MHz-0.5W

Emission Frequency (MHz)	Ant. Polarity(H/H)	Measurement Result (dBm)	Limit (dBm)	Result(P/F)
462.638	H	0		pass
925.275	H	-48.3	-13	pass
1387.91	H	-46.2	-13	pass
1850.550	H	-45.8	-13	pass
2313.188	H	-48.7	-13	pass
2775.825	H	-46.5	-13	pass
3238.463	H	-52.3	-13	pass
3701.100	H	-51.5	-13	pass
4163.738	H	-52.1	-13	pass
4626.375	H	-50.4	-13	pass

The results shown in this test report refer only to the sample(s) tested unless otherwise stated and the sample(s) are retained for 30 days only. The document is issued by AGC, this document cannot be reproduced except in full with our prior written permission. The more details and the authenticity of the report will be confirmed at <http://www.agc-cert.com>.

Emission Frequency (MHz)	Ant. Polarity(H/V)	Measurement Result (dBm)	Limit (dBm)	Result(P/F)
462.638	V	0		pass
925.275	V	-48.1	-13	pass
1387.91	V	-52.3	-13	pass
1850.550	V	-48.8	-13	pass
2313.188	V	-45.1	-13	pass
2775.825	V	-48.3	-13	pass
3238.463	V	-49.1	-13	pass
3701.100	V	-49.2	-13	pass
4163.738	V	-50.3	-13	pass
4626.375	V	-51.8	-13	pass

Measurement Result for 12.5 KHz Channel Separation @ 462.6250MHz-1W

Emission Frequency (MHz)	Ant. Polarity(H/V)	Measurement Result (dBm)	Limit (dBm)	Result(P/F)
462.625	H	0		pass
925.250	H	-48.3	-13	pass
1387.875	H	-45.6	-13	pass
1850.500	H	-47.2	-13	pass
2313.125	H	-42.2	-13	pass
2775.750	H	-41.3	-13	pass
3238.375	H	-45.2	-13	pass
3701.000	H	-44.3	-13	pass
4163.625	H	-50.2	-13	pass
4626.250	H	-51.7	-13	pass

Emission Frequency (MHz)	Ant. Polarity(H/V)	Measurement Result (dBm)	Limit (dBm)	Result(P/F)
462.625	V	0		pass
925.250	V	-49.3	-13	pass
1387.875	V	-46.5	-13	pass
1850.500	V	-47.9	-13	pass
2313.125	V	-45.8	-13	pass
2775.750	V	-43.8	-13	pass
3238.375	V	-49.6	-13	pass
3701.000	V	-45.8	-13	pass
4163.625	V	-53	-13	pass
4626.250	V	-52.1	-13	pass

The results shown in this test report refer only to the sample(s) tested unless otherwise stated and the sample(s) are retained for 30 days only. The document is issued by AGC, this document cannot be reproduced except in full with our prior written permission. The more details and the authenticity of the report will be confirmed at <http://www.agc-cert.com>.

Measurement Result for 12.5 KHz Channel Separation @ 462.6250MHz-0.5W

Emission Frequency (MHz)	Ant. Polarity(H/H)	Measurement Result (dBm)	Limit (dBm)	Result(P/F)
462.625	H	0		pass
925.250	H	-49.5	-13	pass
1387.88	H	-45.7	-13	pass
1850.500	H	-48.2	-13	pass
2313.125	H	-46.6	-13	pass
2775.750	H	-47.5	-13	pass
3238.375	H	-48.3	-13	pass
3701.000	H	-49.1	-13	pass
4163.625	H	-54.8	-13	pass
4626.250	H	-53.2	-13	pass

Emission Frequency (MHz)	Ant. Polarity(H/H)	Measurement Result (dBm)	Limit (dBm)	Result(P/F)
462.625	V	0		pass
925.250	V	-42.1	-13	pass
1387.88	V	-43.2	-13	pass
1850.500	V	-45.3	-13	pass
2313.125	V	-47.1	-13	pass
2775.750	V	-46.8	-13	pass
3238.375	V	-48.5	-13	pass
3701.000	V	-47.3	-13	pass
4163.625	V	-52.2	-13	pass
4626.250	V	-50.4	-13	pass

The results shown in this test report refer only to the sample(s) tested unless otherwise stated and the sample(s) are retained for 30 days only. The document is issued by AGC, this document cannot be reproduced except in full with our prior written permission. The more details and the authenticity of the report will be confirmed at <http://www.agc-cert.com>.

Measurement Result for 12.5 KHz Channel Separation @ 467.6250MHz-0.5W

Emission Frequency (MHz)	Ant. Polarity(H/V)	Measurement Result (dBm)	Limit (dBm)	Result(P/F)
467.625	H	0		pass
935.250	H	-45.3	-13	pass
1402.875	H	-42.1	-13	pass
1870.500	H	-48.3	-13	pass
2338.125	H	-46.6	-13	pass
2805.750	H	-49.3	-13	pass
3273.375	H	-46.2	-13	pass
3741.000	H	-48.4	-13	pass
4208.625	H	-53.1	-13	pass
4676.250	H	-54.1	-13	pass

Emission Frequency (MHz)	Ant. Polarity(H/V)	Measurement Result (dBm)	Limit (dBm)	Result(P/F)
467.625	V	0		pass
935.250	V	-47.2	-13	pass
1402.875	V	-48.8	-13	pass
1870.500	V	-49.3	-13	pass
2338.125	V	-47.6	-13	pass
2805.750	V	-50.2	-13	pass
3273.375	V	-51.2	-13	pass
3741.000	V	-52.3	-13	pass
4208.625	V	-55.6	-13	pass
4676.250	V	-55.9	-13	pass

The results shown in this test report refer only to the sample(s) tested unless otherwise stated and the sample(s) are retained for 30 days only. The document is issued by AGC, this document cannot be reproduced except in full with our prior written permission. The more details and the authenticity of the report will be confirmed at <http://www.agc-cert.com>.

7.5 EMISSION MASK PLOT

Standard Applicable [FCC Part 95.1779] GMRs: Unwanted emissions shall be attenuated below the unmodulated carrier power in accordance with the following:

- (1) At least 25 dB (decibels) on any frequency removed from the center of the authorized bandwidth by more than 50 % up to and including 100% of the authorized bandwidth.
- (2) At least 35 dB on any frequency removed from the center of the authorized bandwidth by more than 100 % up to and including 250 % of the authorized bandwidth.
- (3) At least $43 + 10 \log_{10}(T)$ dB on any frequency removed from the center of the authorized bandwidth by more than 250 %.

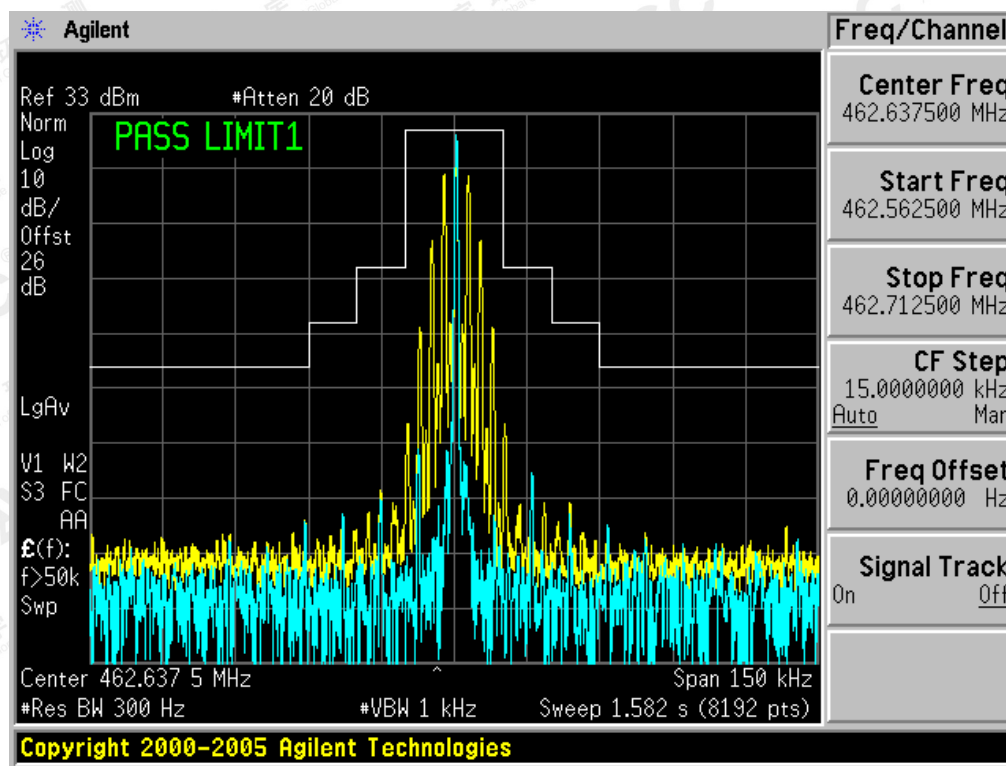
The detailed procedure employed for Emission Mask measurements are specified as following:

- The transmitter shall be modulated by a 2.5 kHz audio signal,
- The level of the audio signal employed is 16 dB greater than that necessary to produce 50% of rated system deviation. Rated system deviation is 2.5 kHz.

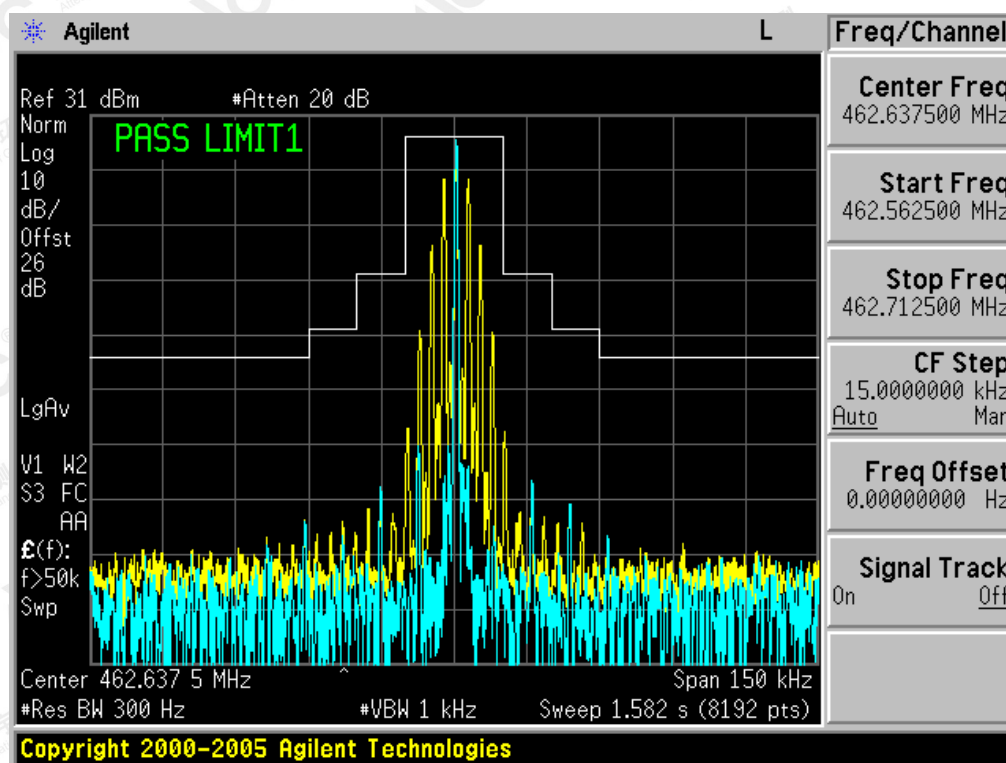
The results shown in this test report refer only to the sample(s) tested unless otherwise stated and the sample(s) are retained for 30 days only. The document is issued by AGC, this document cannot be reproduced except in full with our prior written permission. The more details and the authenticity of the report will be confirmed at <http://www.agc-cert.com>.

Channel 4:

The Worst Emission Mask for channel 4 -1W



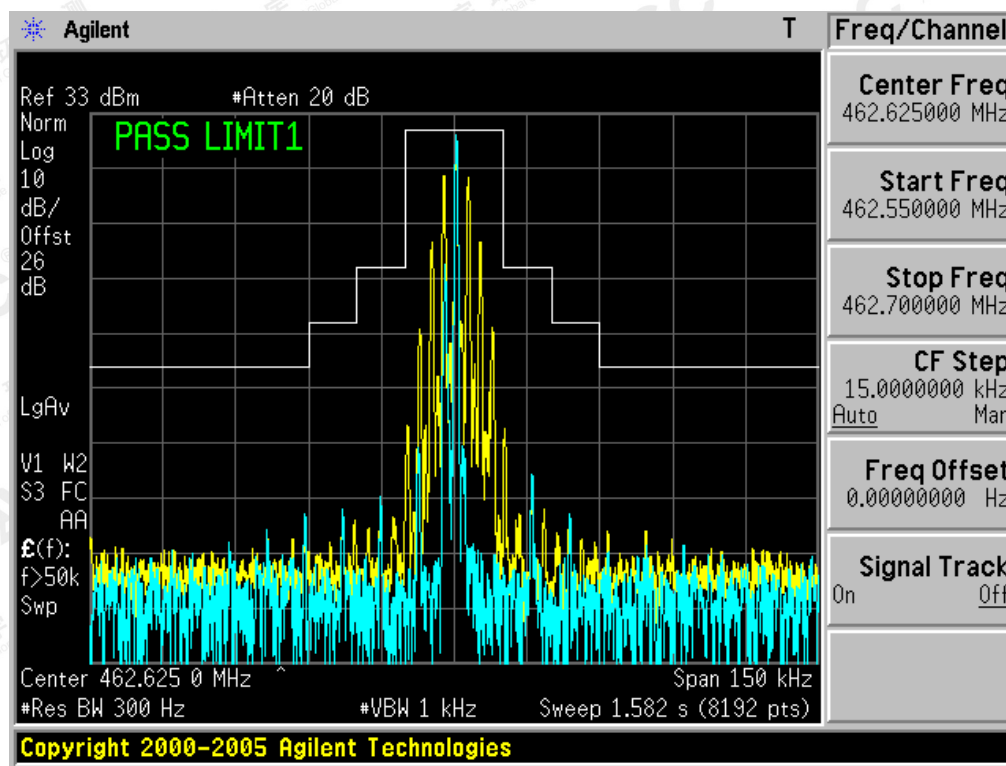
The Worst Emission Mask for channel 4 -0.5W



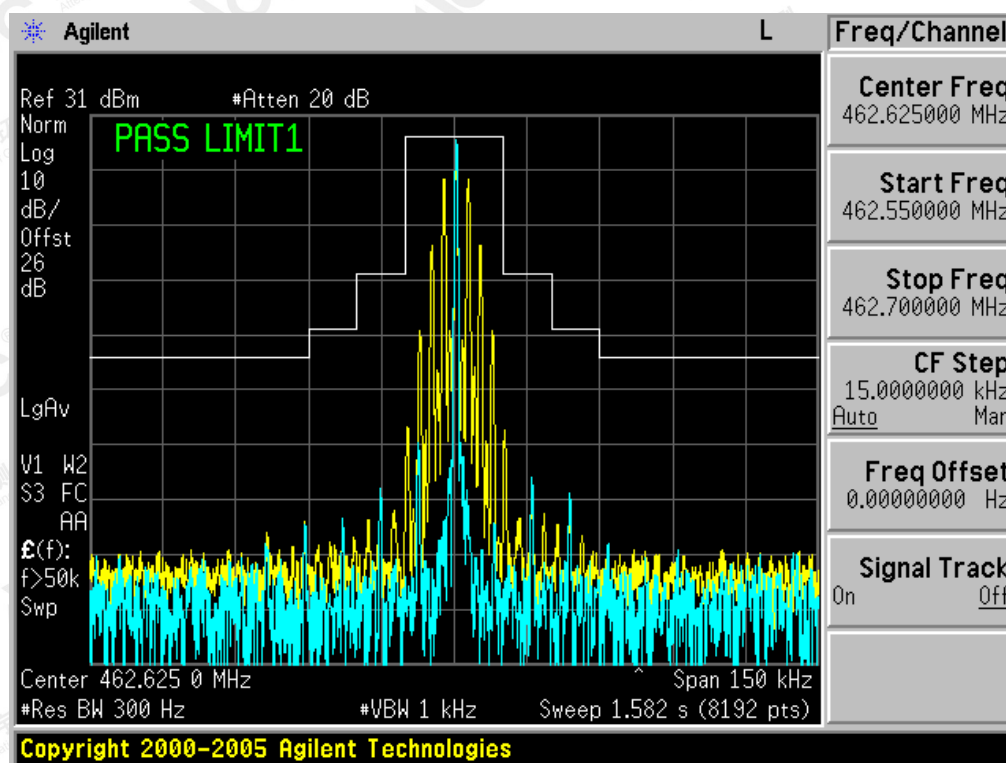
The results shown in this test report refer only to the sample(s) tested unless otherwise stated and the sample(s) are retained for 30 days only. The document is issued by AGC, this document cannot be reproduced except in full with our prior written permission. The more details and the authenticity of the report will be confirmed at <http://www.agc-cert.com>.

CHANNEL 11:

The Worst Emission Mask for channel 11-1W



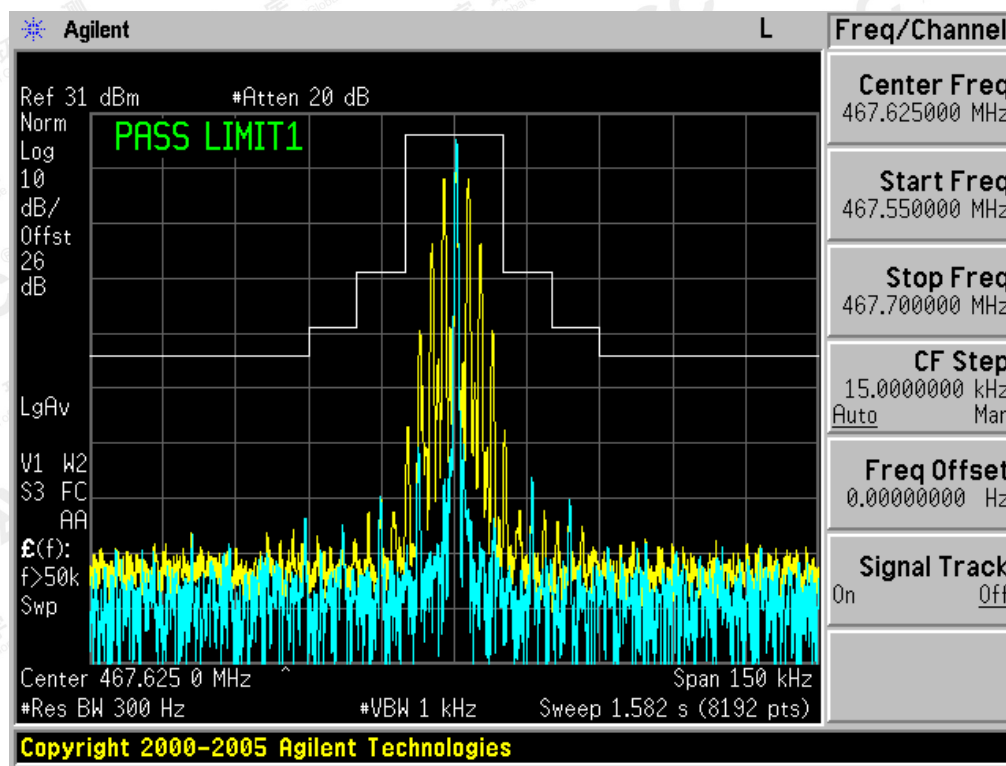
The Worst Emission Mask for channel 11-0.5W



The results shown in this test report refer only to the sample(s) tested unless otherwise stated and the sample(s) are retained for 30 days only. The document is issued by AGC, this document cannot be reproduced except in full with our prior written permission. The more details and the authenticity of the report will be confirmed at <http://www.agc-cert.com>.

CHANNEL 19:

The Worst Emission Mask for channel 19-0.5W



The results shown in this test report refer only to the sample(s) tested unless otherwise stated and the sample(s) are retained for 30 days only. The document is issued by AGC, this document cannot be reproduced except in full with our prior written permission. The more details and the authenticity of the report will be confirmed at <http://www.agc-cert.com>.

8. AUDIO LOW PASS FILTER RESPONSE

8.1.PROVISIONS APPLICABLE

§95.1775 GMRS modulation requirements

Audio filter. Each GMRS transmitter type must include audio frequency low pass filtering, unless it complies with the applicable paragraphs of §95.1779 (without filtering).

The filter must be between the modulation limiter and the modulated stage of the transmitter.

At any frequency (f in kHz) between 3 and 20 kHz, the filter must have an attenuation of at least $60 \log(f/3)$ dB more than the attenuation at 1 kHz. Above 20 kHz, it must have an attenuation of at least 50 dB more than the attenuation at 1 kHz

8.2.TEST PROCEDURE

- (1) The DUT transmitter output port was connected to Modulation Analyzer.
- (2) Path loss for the measurement included.
- (3) Press 23.1SPCL on modulation analyzer to enable the external LO from Sigen.
- (4) Set the Sigen frequency to $F_c + 1.5\text{MHz}$, RF output level to 0dBm without modulation.
- (5) Transmit the radio and set the audio analyzer to 1 kHz audio frequency and 60% of the maximum deviation.
- (6) Up the amplitude by 20dB.
- (7) On DSA, get the reference point to 0dB.
- (8) Vary the frequency on audio analyzer from 3 kHz to 30 kHz, record the audio tone from DSA.

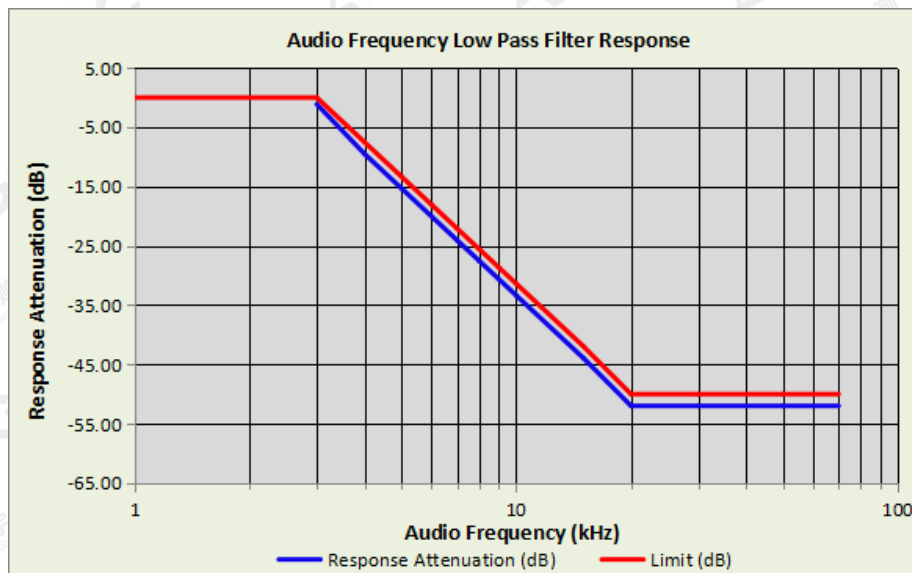
8.3 TEST CONFIGURATION



The results shown in this test report refer only to the sample(s) tested unless otherwise stated and the sample(s) are retained for 30 days only. The document is issued by AGC, this document cannot be reproduced except in full with our prior written permission. The more details and the authenticity of the report will be confirmed at <http://www.agc-cert.com>.

8.4 TEST RESULT

Audio Frequency (kHz)	Response Attenuation (dB)	Limit (dB)
1	0	/
3	-1.11	0.00
4	-9.48	-7.50
5	-15.29	-13.31
6	-20.04	-18.06
7	-24.06	-22.08
8	-27.54	-25.56
9	-30.61	-28.63
10	-33.35	-31.37
15	-43.92	-41.94
20	-51.98	-50.00
30	-51.98	-50.00
50	-51.98	-50.00
70	-51.98	-50.00



The results shown in this test report refer only to the sample(s) tested unless otherwise stated and the sample(s) are retained for 30 days only. The document is issued by AGC, this document cannot be reproduced except in full with our prior written permission. The more details and the authenticity of the report will be confirmed at <http://www.agc-cert.com>.

9. MAXIMUM TRANSMITTER POWER

9.1 PROVISIONS APPLICABLE

FCC Part 95.1767 For GMRS, the maximum permissible transmitter output power effective radiated power (e.r.p.) as follows.

This section contains transmitting power limits for GMRS stations. The maximum transmitting power depends on which channels are being used and the type of station.

(a)462/467 MHz main channels. The limits in this paragraph apply to stations transmitting on any of the 462 MHz main channels or any of the 467 MHz main channels. Each GMRS transmitter type must be capable of operating within the allowable power range. GMRS licensees are responsible for ensuring that their GMRS stations operate in compliance with these limits.

(1)The transmitter output power of mobile, repeater and base stations must not exceed 50 Watts.

(2)The transmitter output power of fixed stations must not exceed 15 Watts.

(b)462 MHz interstitial channels. The effective radiated power (ERP) of mobile, hand-held portable and base stations transmitting on the 462 MHz interstitial channels must not exceed 5 Watts.

(c)467 MHz interstitial channels. The effective radiated power (ERP) of hand-held portable units transmitting on the 467 MHz interstitial channels must not exceed 0.5 Watt. Each GMRS transmitter type capable of transmitting on these channels must be designed such that the ERP does not exceed 0.5 Watt.

9.2 TEST PROCEDURE

(1)EUT was placed on a 0.8 meter high non-conductive stand at a 3 meter test distance from the receive antenna. A receiving antenna was placed on the antenna mast 3 meters from the EUT for emission measurements. The disturbance of the transmitter was maximized on the test receiver display by raising and lowering from 1m to 4m the receive antenna and by rotating through 360° the turntable. After the fundamental emission was maximized, a field strength measurement was made. The radiated emission measurements of all transmit frequencies in all channels were measured with peak detector

(2)A log-periodic antenna or double-ridged waveguide horn antenna shall be substituted in place of the EUT. The log-periodic antenna will be driven by a signal generator and the level will be adjusted till the same power value on the spectrum analyzer or receiver. The level of the spurious emissions can be calculated through the level of the signal generator, cable loss, the gain of the substitution antenna and the reading of the spectrum analyzer or receiver

(3)The EUT is then put into continuously transmitting mode at its maximum power level during the test. Set Test Receiver or Spectrum RBW=100kHz, VBW=300kHz for 30MHz to 1GHz, And the maximum value of the receiver should be recorded as (Pr).

The results shown in this test report refer only to the sample(s) tested unless otherwise stated and the sample(s) are retained for 30 days only. The document is issued by AGC, this document cannot be reproduced except in full with our prior written permission. The more details and the authenticity of the report will be confirmed at <http://www.agc-cert.com>.

(4)The EUT shall be replaced by a substitution antenna. In the chamber, an substitution antenna for the frequency band of interest is placed at the reference point of the chamber. An RF Signal source for the frequency band of interest is connected to the substitution antenna with a cable that has been constructed to not interfere with the radiation pattern of the antenna. A power (PMea) is applied to the input of the substitution antenna, and adjust the level of the signal generator output until the value of the receiver reach the previously recorded (Pr). The power of signal source (PMea) is recorded. The test should be performed by rotating the test item and adjusting the receiving antenna polarization.

(5)A amplifier should be connected to the Signal Source output port. And the cable should be connect between the Amplifier and the Substitution Antenna. The cable loss (Pcl) ,the Substitution Antenna Gain (Ga) and the Amplifier Gain (PAg) should be recorded after test.

The measurement results are obtained as described below: $\text{Power(EIRP)} = \text{PMea} - \text{PAg} - \text{Pcl} - \text{Ga}$ The measurement results are amend as described below:

$\text{Power(EIRP)} = \text{PMea} - \text{Pcl} - \text{Ga}$

(6)This value is EIRP since the measurement is calibrated using an antenna of known gain (2.15 dBi) and known input power.

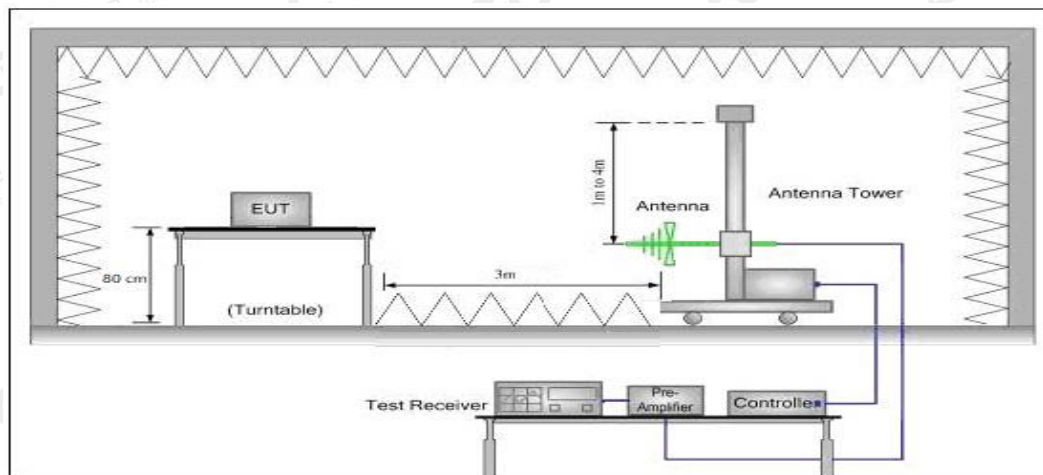
(7)ERP can be calculated from EIRP by subtracting the gain of the dipole, $\text{ERP} = \text{EIRP} - 2.15\text{dBi}$.

(8)Test the EUT in the lowest channel, the middle channel the Highest channel

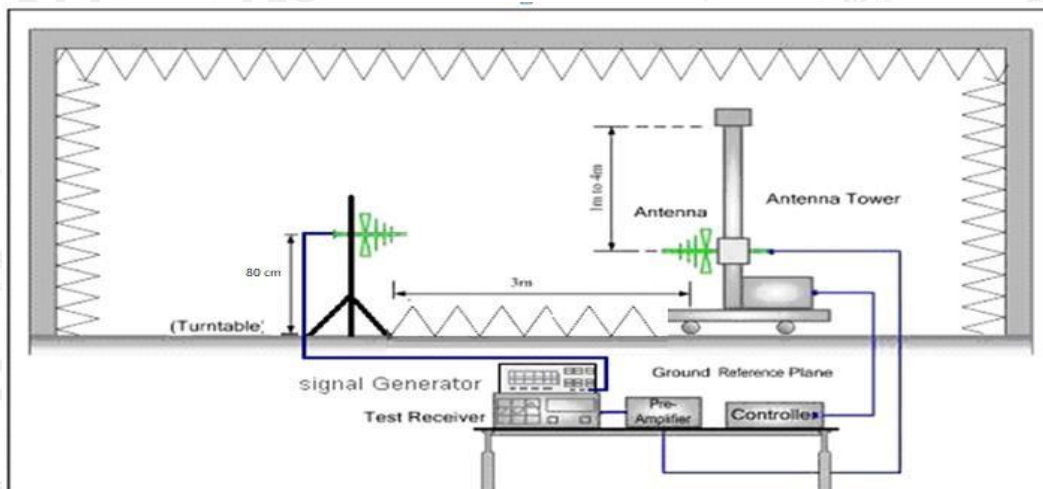
9.3 TEST CONFIGURATION

Effective Radiated Power

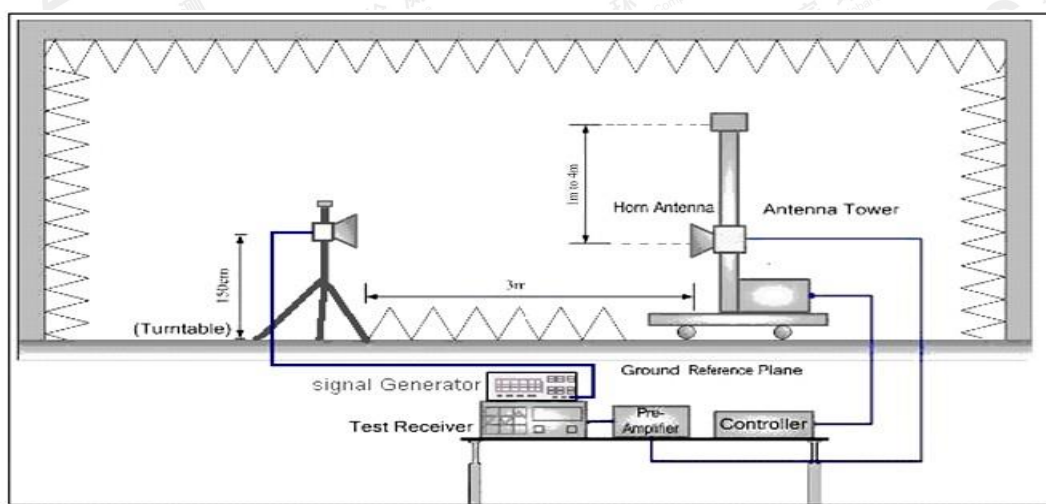
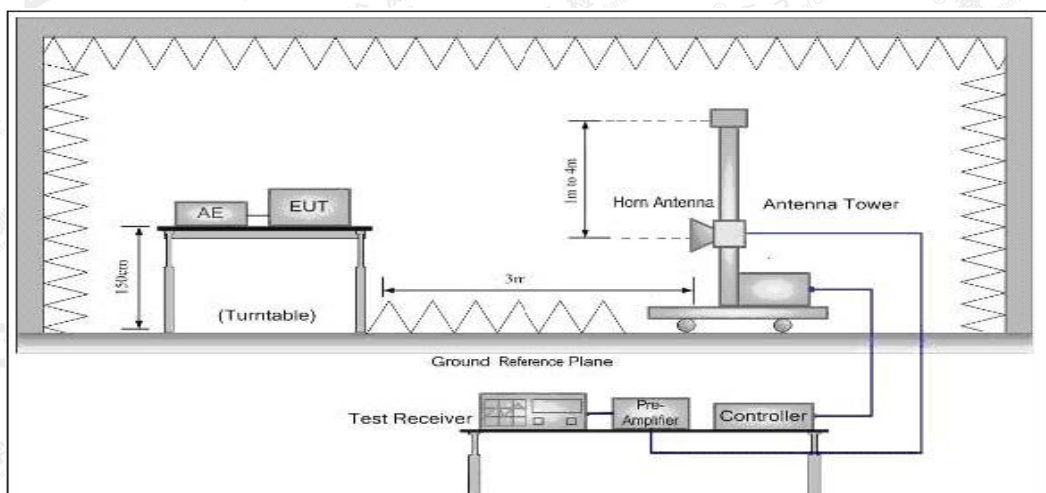
Radiated Below1GHz



The results shown in this test report refer only to the sample(s) tested unless otherwise stated and the sample(s) are retained for 30 days only. The document is issued by AGC, this document cannot be reproduced except in full with our prior written permission. The more details and the authenticity of the report will be confirmed at <http://www.agc-cert.com>.



Radiated Above 1 GHz



The results shown in this test report refer only to the sample(s) tested unless otherwise stated and the sample(s) are retained for 30 days only. The document is issued by AGC, this document cannot be reproduced except in full with our prior written permission. The more details and the authenticity of the report will be confirmed at <http://www.agc-cert.com>.

8.4 TEST RESULT

The maximum Power (CP) for UHF is

Analog: 1W/0.5W for 12.5 KHz Channel Separation

Calculation Formula: $CP = R + A + L$

* Note:

CP: The final Conducted Power

R : The reading value from spectrum analyzer

A : The attenuation value of the used attenuator

L : The loss of all connection cables

ERP RESULT:

Operation Mode	Channel	Frequency (MHz)	ERP(dBm)	ERP(W)	Limits (W)	Margin (W)	Pass/Fail
GMRS	4	462.6375	29.75	0.944	5.00	4.056	Pass
	11	462.6250	29.66	0.925	50.00	49.075	Pass
GMRS	4	462.6375	26.41	0.438	5.00	4.562	Pass
	11	462.6250	26.45	0.442	50.00	49.558	Pass
	19	467.6250	26.77	0.475	50.00	49.525	Pass

The results shown in this test report refer only to the sample(s) tested unless otherwise stated and the sample(s) are retained for 30 days only. The document is issued by AGC, this document cannot be reproduced except in full with our prior written permission. The more details and the authenticity of the report will be confirmed at <http://www.agc-cert.com>.

10. MODULATION CHARACTERISTICS

10.1 PROVISIONS APPLICABLE

According to [FCC Part 95.1775, Part 2.1047(a)], for Voice Modulation Communication Equipment, the frequency response of the audio modulation circuit over a range of 100 to 5000Hz shall be measured.

Part 95.1775(a) A GMRS unit that transmits emission type F3E must not exceed a peak frequency deviation of plus or minus 2.5 kHz, and the audio frequency response must not exceed 3.125 kHz.

Part 2.1047(a) A curve or equivalent data showing the frequency response of the audio modulating circuit over a range of 100 to 5000Hz shall be submitted. For equipment required to have an audio low-pass filter, a curve showing the frequency response of the filter, or of all circuitry installed between the modulation limiter and the modulated stage shall be submitted.

10.2 MEASUREMENT METHOD

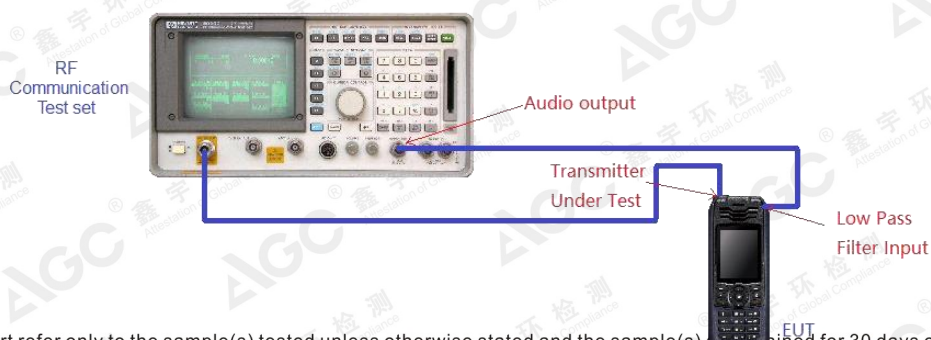
10.2.1 Modulation Limit

- (1). Configure the EUT as shown in figure 1, adjust the audio input for 60% of rated system deviation at 1KHz using this level as a reference (0dB) and vary the input level from -20 to +20dB. Record the frequency deviation obtained as a function of the input level.
- (2). Repeat step 1 with input frequency changing to 300, 1000, 1500 and 3000Hz in sequence.

10.2.2 Audio Frequency Response

Personal Radio Service stations that transmit voice emissions may also transmit audible or subaudible tones or other signals for the purpose of selective calling and/or receiver squelch activation. These tones and signals are ancillary to voice communications and are considered to be included within the voice emission types, e.g., A3E, F3E, and G3E.

- (a) Tones that are audible (having a frequency higher than 300 Hertz), must last no longer than 15 seconds at one time.
- (b) Tones that are subaudible (having a frequency of 300 Hertz or less), may be transmitted continuously during a communication session.
 - (1). Configure the EUT as shown in figure 1.
 - (2). Adjust the audio input for 20% of rated system deviation at 1 KHz using this level as a reference (0 dB).
 - (3). Vary the Audio frequency from 100 Hz to 10 KHz and record the frequency deviation.
 - (4). Audio Frequency Response = $20\log_{10}(\text{Deviation of test frequency}/\text{Deviation of 1 KHz reference})$.



The results shown in this test report refer only to the sample(s) tested unless otherwise stated and the sample(s) is/are valid for 30 days only. The document is issued by AGC, this document cannot be reproduced except in full with our prior written permission. The more details and the authenticity of the report will be confirmed at <http://www.agc-cert.com>.

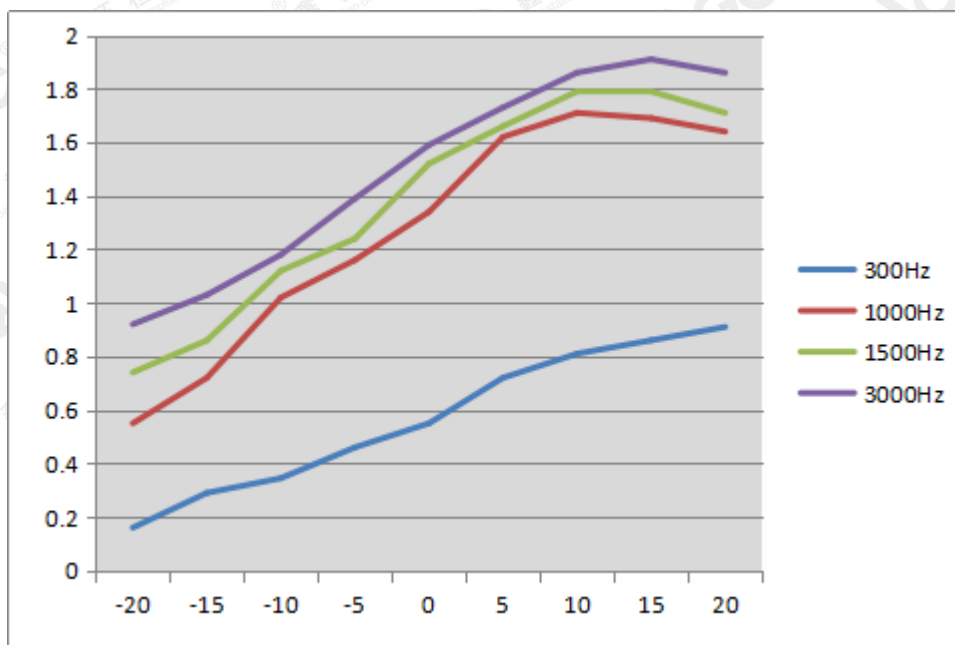
10.3 MEASUREMENT RESULT

TEST CHANNEL: 11

(A). MODULATION LIMIT:

462.6250MHz @ 12.5 KHz Channel Separations-1W

Modulation Level (dB)	Peak Freq. Deviation At 300 Hz	Peak Freq. Deviation At 1000 Hz	Peak Freq. Deviation At 1500 Hz	Peak Freq. Deviation At 3000 Hz
-20	0.16	0.55	0.74	0.92
-15	0.29	0.72	0.86	1.03
-10	0.345	1.02	1.12	1.18
-5	0.46	1.16	1.24	1.39
0	0.55	1.34	1.52	1.59
+5	0.72	1.62	1.66	1.73
+10	0.81	1.71	1.79	1.86
+15	0.86	1.69	1.79	1.91
+20	0.91	1.64	1.71	1.86



Note: All the modes had been tested, but only the worst data recorded in the report.

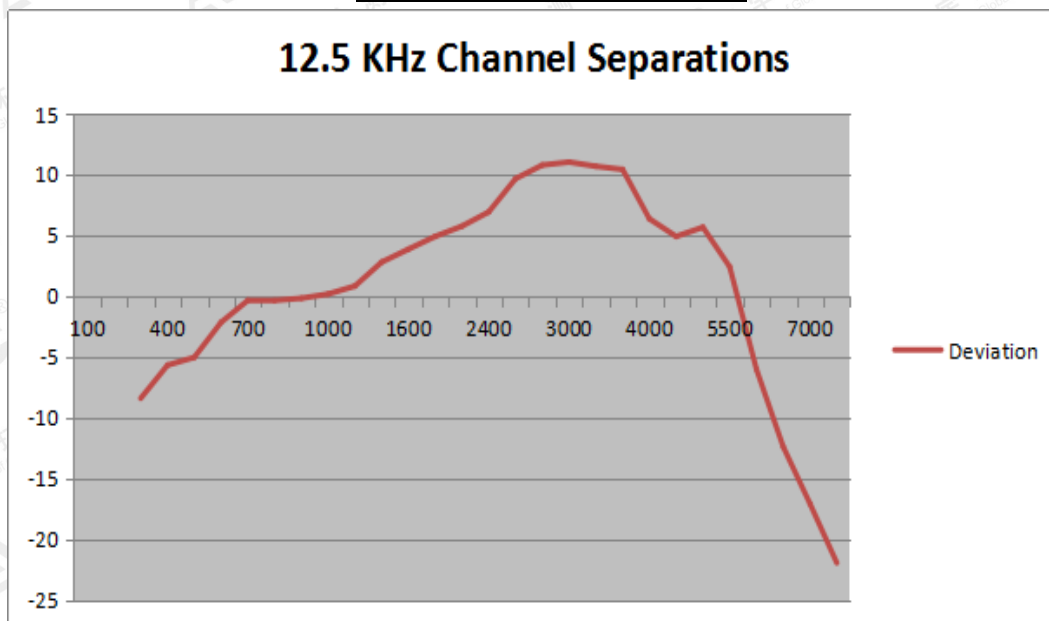
The results shown in this test report refer only to the sample(s) tested unless otherwise stated and the sample(s) are retained for 30 days only. The document is issued by AGC, this document cannot be reproduced except in full with our prior written permission. The more details and the authenticity of the report will be confirmed at <http://www.agc-cert.com>.

(B). AUDIO FREQUENCY RESPONSE:
462.6250MHz @ 12.5 KHz Channel Separations-1W

Frequency (Hz)	Deviation (KHz)	Audio Frequency Response(dB)
100	--	--
200	--	--
300	0.19	-8.40
400	0.26	-5.68
500	0.28	-5.04
600	0.39	-2.16
700	0.48	-0.35
800	0.48	-0.35
900	0.49	-0.18
1000	0.51	0.17
1200	0.55	0.83
1400	0.69	2.80
1600	0.78	3.86
1800	0.88	4.91
2000	0.97	5.76
2400	1.11	6.93
2500	1.52	9.66
2800	1.73	10.78
3000	1.78	11.03
3200	1.71	10.68
3600	1.66	10.42
4000	1.04	6.36
4500	0.88	4.91
5000	0.96	5.67
5500	0.66	2.41
6000	0.25	-6.02
6500	0.12	-12.40
7000	0.07	-17.08
7500	0.04	-21.94
9000	--	--
10000	--	--
14000	--	--
18000	--	--
20000	--	--
30000	--	--

The results shown in this test report refer only to the sample(s) tested unless otherwise stated and the sample(s) are retained for 30 days only. The document is issued by AGC, this document cannot be reproduced except in full with our prior written permission. The more details and the authenticity of the report will be confirmed at <http://www.agc-cert.com>.

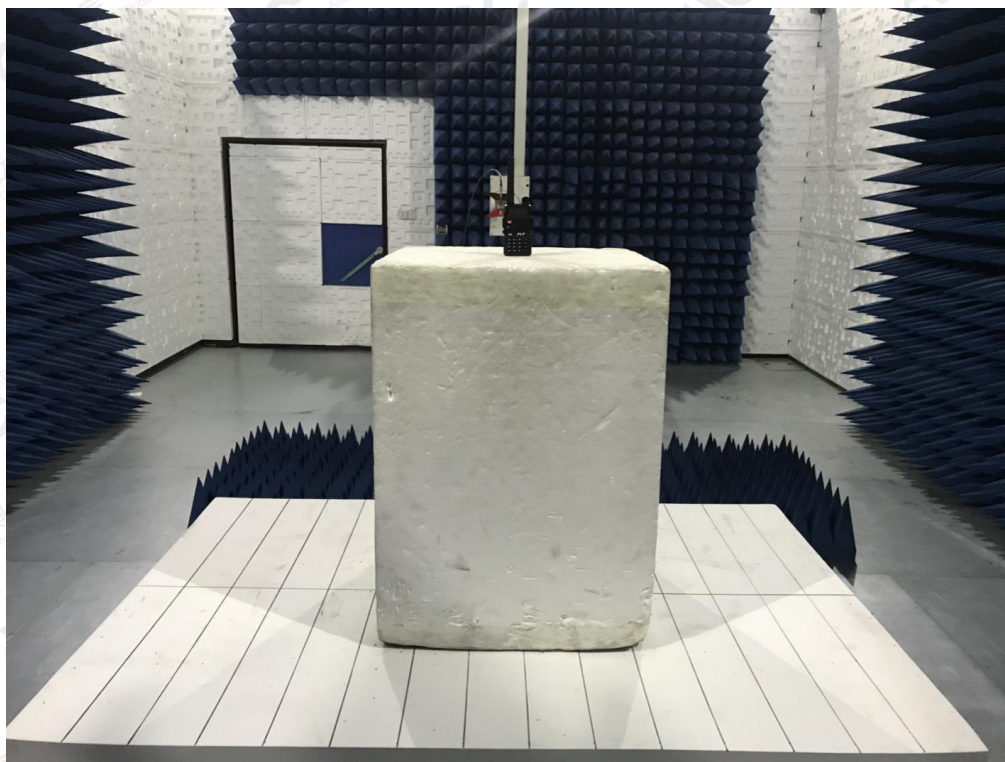
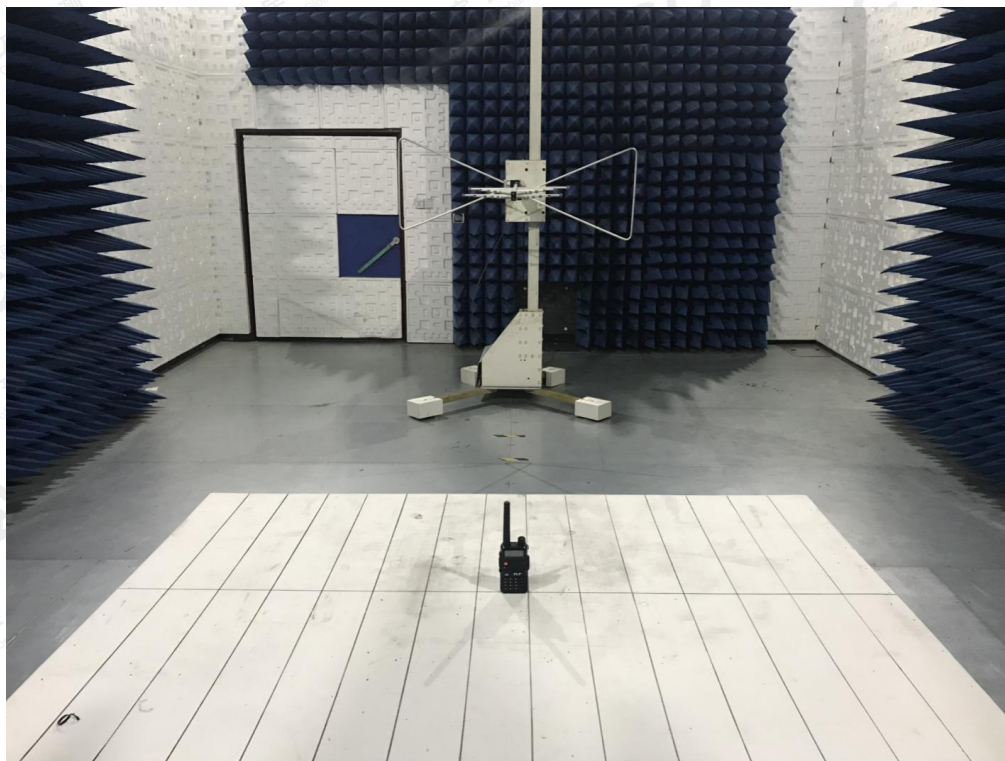
Frequency Response Result



Note: All the modes had been tested, but only the worst data recorded in the report.

The results shown in this test report refer only to the sample(s) tested unless otherwise stated and the sample(s) are retained for 30 days only. The document is issued by AGC, this document cannot be reproduced except in full with our prior written permission. The more details and the authenticity of the report will be confirmed at <http://www.agc-cert.com>.

APPENDIX I: PHOTOGRAPHS OF SETUP
RADIATED EMISSION TEST SETUP



The results shown in this test report refer only to the sample(s) tested unless otherwise stated and the sample(s) are retained for 30 days only. The document is issued by AGC, this document cannot be reproduced except in full with our prior written permission. The more details and the authenticity of the report will be confirmed at <http://www.agc-cert.com>.

APPENDIX II: EXTERNAL VIEW OF EUT

TOTAL VIEW OF EUT



TOP VIEW OF EUT



The results shown in this test report refer only to the sample(s) tested unless otherwise stated and the sample(s) are retained for 30 days only. The document is issued by AGC, this document cannot be reproduced except in full with our prior written permission. The more details and the authenticity of the report will be confirmed at <http://www.agc-cert.com>.

The results shown in this test report refer only to the sample(s) tested unless otherwise stated and the sample(s) are retained for 30 days only. The document is issued by AGC, this document cannot be reproduced except in full with our prior written permission. The more details and the authenticity of the report will be confirmed at <http://www.agc-cert.com>.

BOTTOM VIEW OF EUT



FRONT VIEW OF EUT



The results shown in this test report refer only to the sample(s) tested unless otherwise stated and the sample(s) are retained for 30 days only. The document is issued by AGC, this document cannot be reproduced except in full with our prior written permission. The more details and the authenticity of the report will be confirmed at <http://www.agc-cert.com>.

BACK VIEW OF EUT



LEFT VIEW OF EUT



The results shown in this test report refer only to the sample(s) tested unless otherwise stated and the sample(s) are retained for 30 days only. The document is issued by AGC, this document cannot be reproduced except in full with our prior written permission. The more details and the authenticity of the report will be confirmed at <http://www.agc-cert.com>.

RIGHT VIEW OF EUT



OPEN VIEW OF EUT(FIGURE 1)

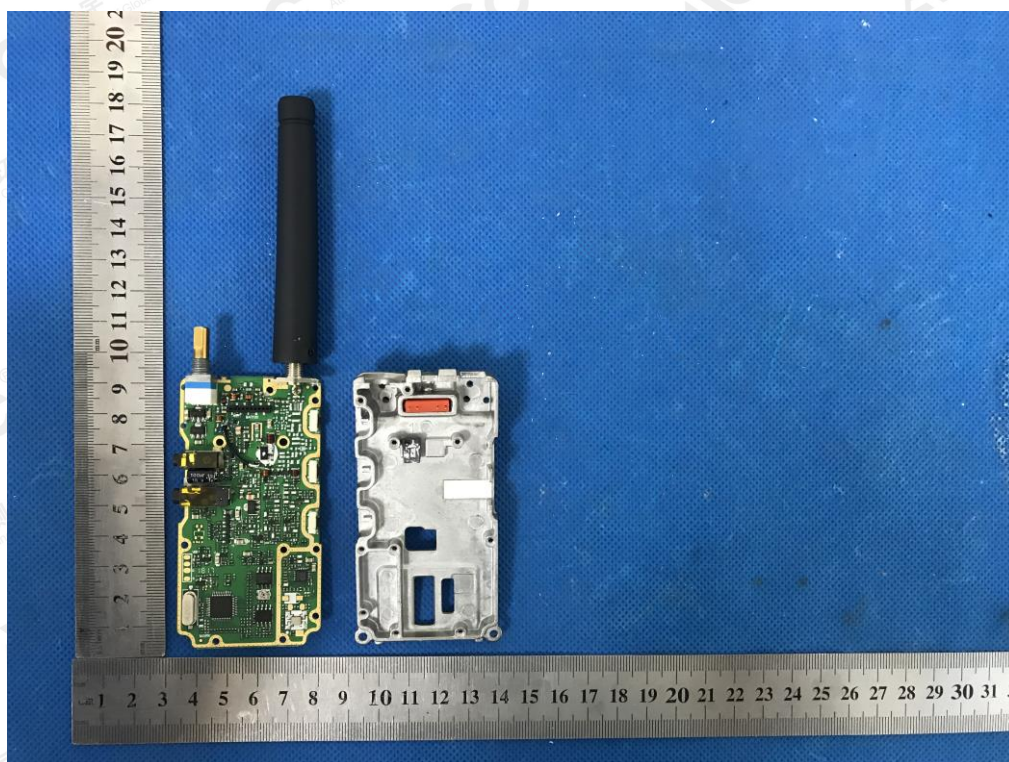


The results shown in this test report refer only to the sample(s) tested unless otherwise stated and the sample(s) are retained for 30 days only. The document is issued by AGC, this document cannot be reproduced except in full with our prior written permission. The more details and the authenticity of the report will be confirmed at <http://www.agc-cert.com>.

OPEN VIEW OF EUT(FIGURE 2)

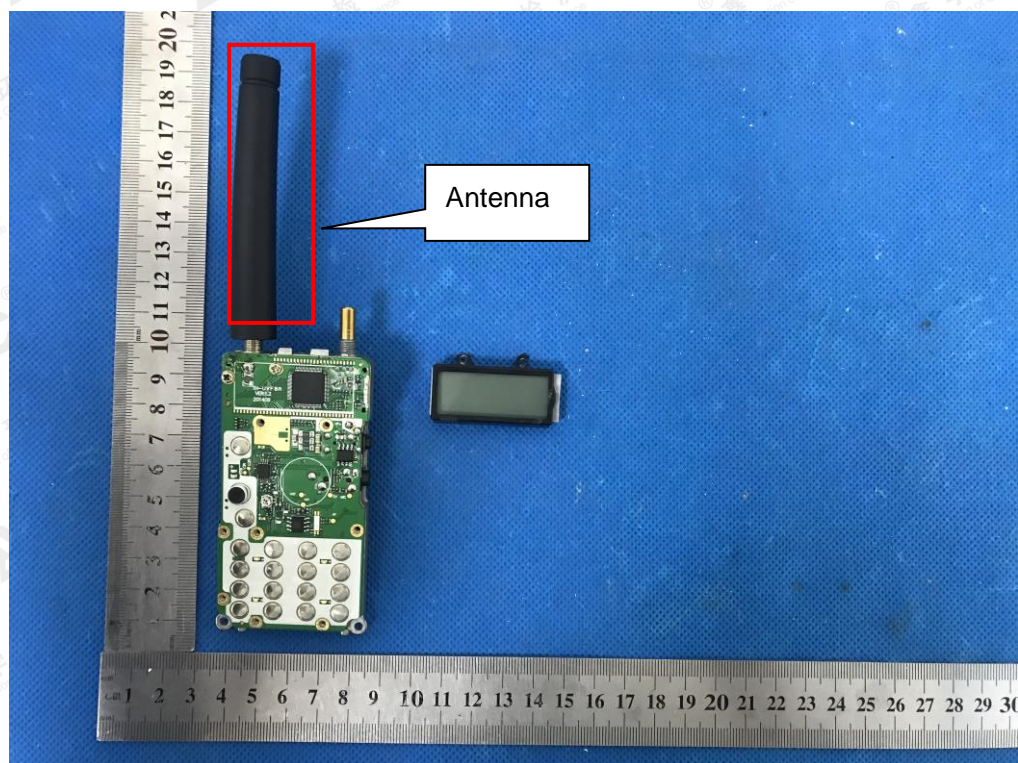


OPEN VIEW OF EUT(FIGURE 3)

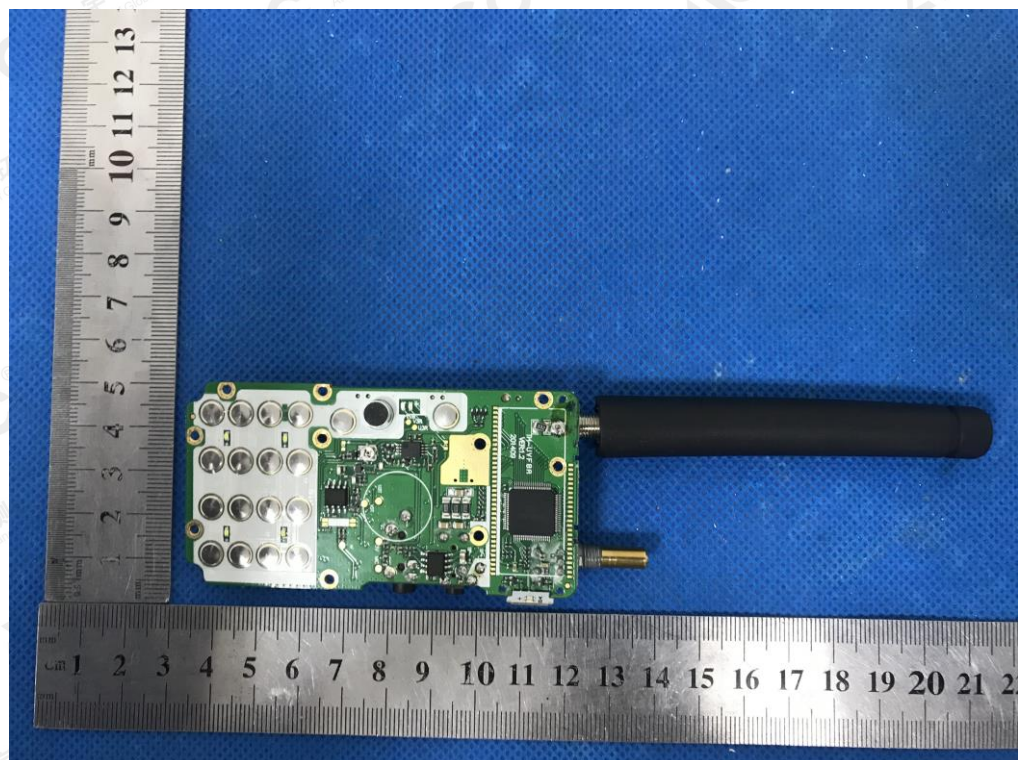


The results shown in this test report refer only to the sample(s) tested unless otherwise stated and the sample(s) are retained for 30 days only. The document is issued by AGC, this document cannot be reproduced except in full with our prior written permission. The more details and the authenticity of the report will be confirmed at <http://www.agc-cert.com>.

INTERNAL VIEW OF EUT(FIGURE 1)

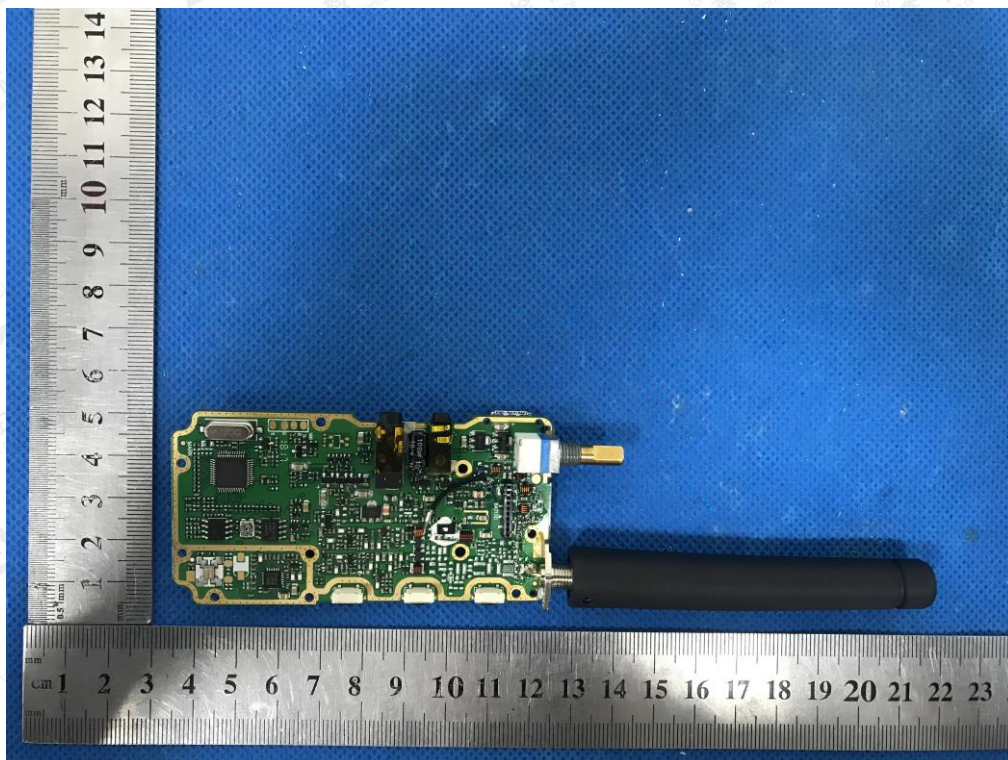


INTERNAL VIEW OF EUT(FIGURE 2)

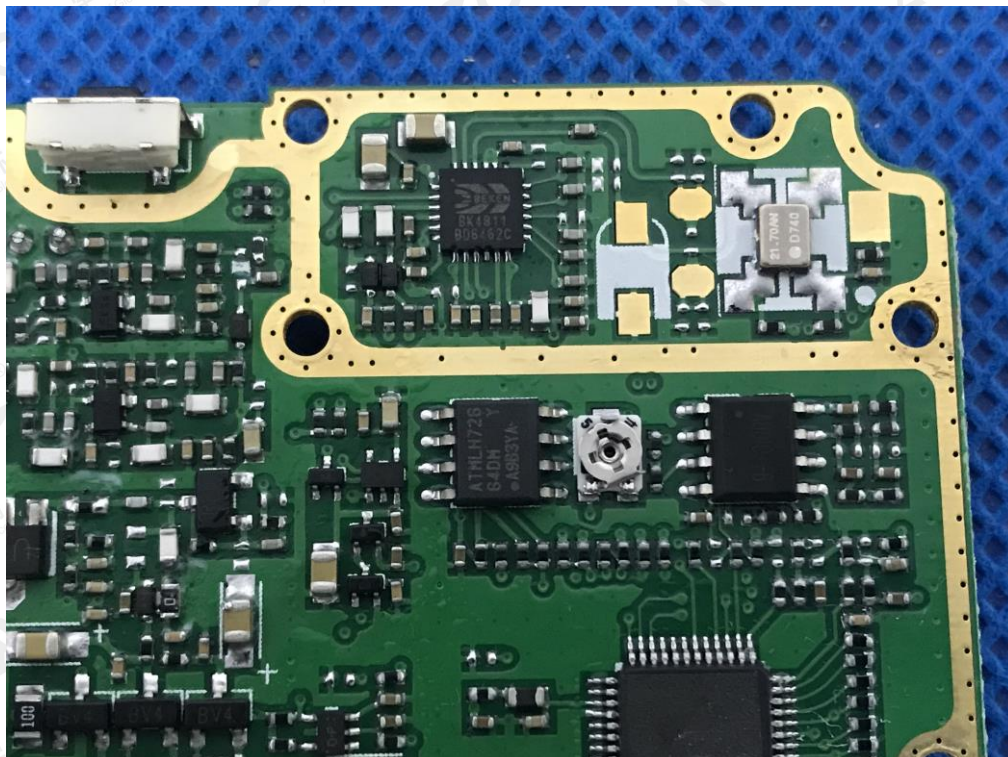


The results shown in this test report refer only to the sample(s) tested unless otherwise stated and the sample(s) are retained for 30 days only. The document is issued by AGC, this document cannot be reproduced except in full with our prior written permission. The more details and the authenticity of the report will be confirmed at <http://www.agc-cert.com>.

INTERNAL VIEW OF EUT(FIGURE 3)

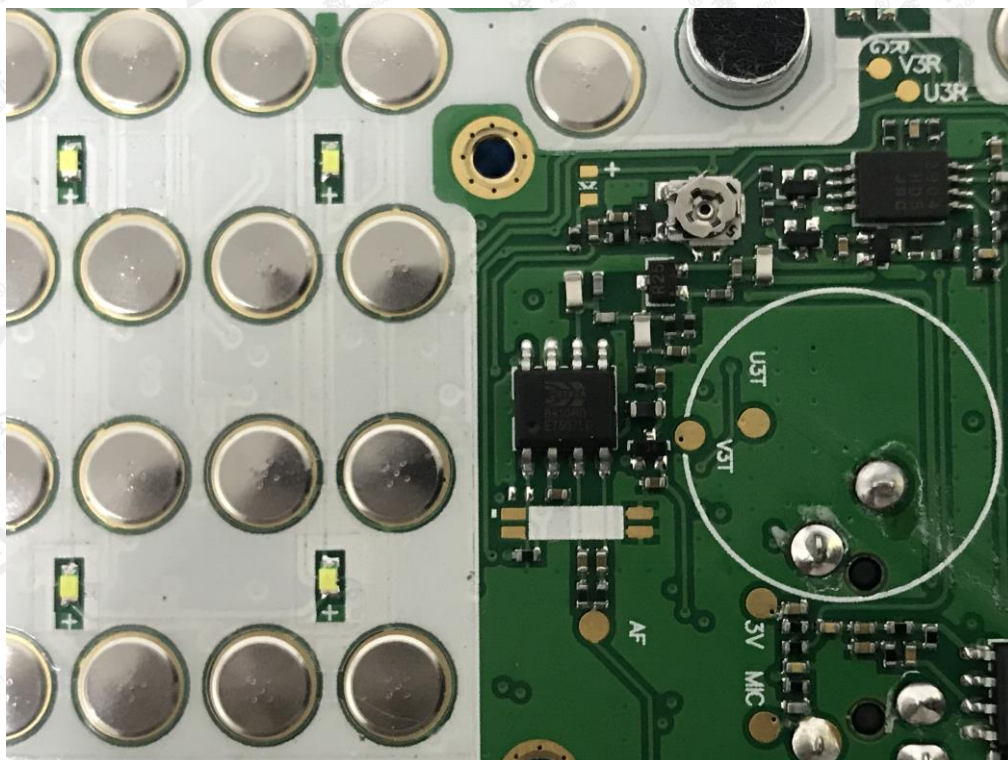


INTERNAL VIEW OF EUT(FIGURE 4)

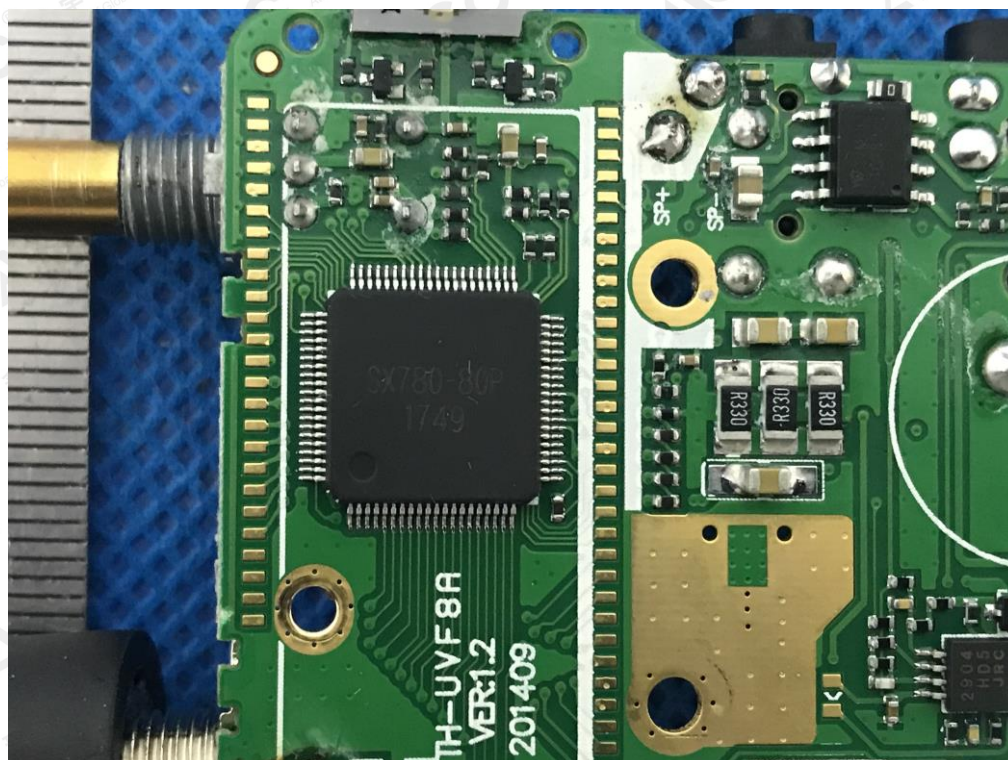


The results shown in this test report refer only to the sample(s) tested unless otherwise stated and the sample(s) are retained for 30 days only. The document is issued by AGC, this document cannot be reproduced except in full with our prior written permission. The more details and the authenticity of the report will be confirmed at <http://www.agc-cert.com>.

INTERNAL VIEW OF EUT(FIGURE 5)



INTERNAL VIEW OF EUT(FIGURE 6)



-----END OF REPORT-----

The results shown in this test report refer only to the sample(s) tested unless otherwise stated and the sample(s) are retained for 30 days only. The document is issued by AGC, this document cannot be reproduced except in full with our prior written permission. The more details and the authenticity of the report will be confirmed at <http://www.agc-cert.com>.