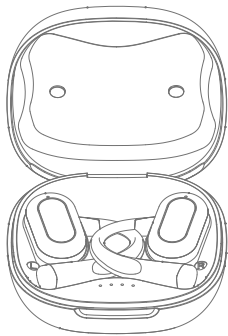


mybat

DESIGN LAB SERIES
OPEN-EAR EARBUDS



User Manual

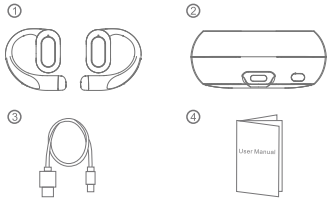
Model: GE10
S051

GET READY FOR SOMETHING GREAT

Enjoy the Design Lab Series Open-Ear True Wireless Earbuds! Get ready to experience sound in a whole new way. These open-ear design buds let you enjoy your music while staying aware of your surroundings. Engineered for both comfort and clarity, they redefine your listening experience. It's not just about music anymore—it's about staying connected to the world around you while enjoying your favorite tunes.

Please read this user manual carefully and keep it for future reference.

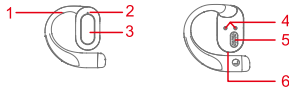
PACKAGE CONTENTS



1. Open-Ear True Wireless Earbuds
2. Charging Case With LED Power Display
3. USB-C Charging Cable
4. User Manual

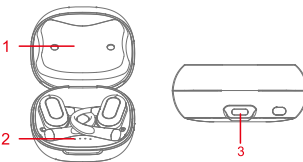
PRODUCT OVERVIEW

Earbuds



1. Ear Hook
2. LED Indicator Light
3. Touch Control
4. Charging Contact
5. Speaker
6. Built-In Mic

Charging Case



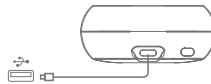
1. Cover
2. LED Power Display
3. USB-C Charging Port

HOW TO CHARGE

Fully charge the earbuds before first use.

NOTE: The earbuds take approximately 1 hour for a full charge, while the charging case takes an additional 2 hours.

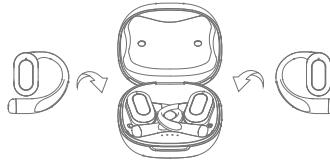
Charging The Case: Connect the USB-A plug to a charger with a 5W power output and insert the USB-C plug into the charging port.



Charge the Charging Case

Charging The Earbuds: Charging will begin once the earbuds are placed inside the case.

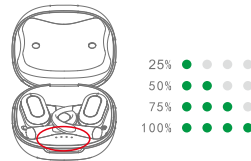
NOTE: There is no need to connect the case to a cable or power supply to charge the earbuds.



Charge the Headphones

CHARGING CASE POWER INDICATOR

Whenever you place headphones into the case or connect a charging cable, the lights will indicate the charging case's battery level.



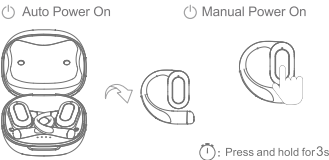
NOTE: While charging the 4th indicator light will flash continuously. All 4 lights will turn solid once fully charged.

POWER ON/OFF

Power On:

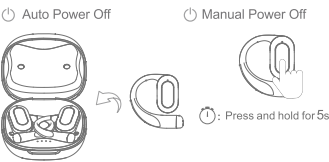
Auto Power On: The earbuds will automatically power on when removed from the charging case.

Manual Power On: Press & hold the touch control on the earbuds for 3 seconds.



Power Off: The earbuds will automatically power off when placed back in the charging case.

Manual Power Off: Press & hold the touch control on the earbuds for 5 seconds.

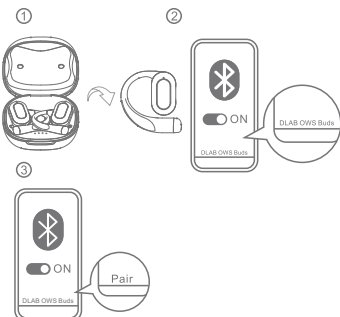


NOTE: After 3 minutes of no connection, the earbuds will automatically shut off.

HOW TO PAIR

1. Open the charging case and remove the earbuds. The earbuds will automatically power on and enter pairing mode.
2. Ensure your device's Bluetooth setting is turned on.
3. Choose "DLAB OWS Buds" from the list of found Bluetooth devices and click pair.

NOTE: Once turned on, the earbuds will automatically connect to your last paired device if it is within the Bluetooth range.



MUSIC CONTROLS

Play / Pause	Tap 2X (L/R Earbud)
Previous Track	Tap 3X (L Earbud)
Next Track	Tap 3X (R Earbud)
Volume-	Tap 1X (L Earbud)
Volume+	Tap 1X (R Earbud)

CALL CONTROLS

Answer / End a Call	Tap 2X (L/R Earbud)
Reject a Call	Tap & Hold For 2s (L/R Earbud)

VOICE CONTROLS

Activate Siri & Other Assistants	Tap & Hold For 3s (L/R Earbud)
----------------------------------	--------------------------------

SPECIFICATIONS

Model: GE10
Bluetooth version: V5.4
Bluetooth frequency: 2402MHz-2480MHz
Bluetooth profile: AVRCP, A2DP, HFP, HSP
Audio codec format: SBC, AAC
Bluetooth range: 10 m/33 ft
Driver size: 13mm diamond coated driver x 2
Frequency response: 20Hz~20kHz
Impedance: 16Ω
Input: DC 5V/500mA

Battery capacity: 35mAh x 2 (headphones); 400mAh (charging case)
Charging time: 1 hours (for headphones); 2 hours (for charging case via USB)
Playtime: 5 hours (varies by volume level and content)

IMPORTANT SAFETY INSTRUCTIONS

To avoid hearing damage, limit the time you use headphones at high volume and set the volume to a safe level. The louder the volume, the shorter the safe listening time is.

- Be sure to observe the following guidelines when using your earpieces.
- Listen at reasonable volumes for reasonable periods of time.
- Be careful not to adjust the volume continuously upwards as your hearing adapts.
- Do not turn up the volume so high that you can't hear what's around you.
- You should use caution or temporarily discontinue use in potentially hazardous situations.
- Excessive sound pressure from earphones and headphones can cause hearing loss.
- Using headphones with both ears covered while driving is not recommended and may be illegal in some areas while driving.
- For your safety, avoid distractions from music or phone calls while in traffic or other potentially dangerous environments.

FCC STATEMENT

This equipment has been tested and found to comply with the limits for a Class B digital device, pursuant to Part 15 of the FCC Rules. These limits are designed to provide reasonable protection against harmful interference in a residential installation. This equipment generates and can radiate radio frequency energy and, if not installed and used in accordance with these instructions, may cause harmful interference to radio communications. However, there is no guarantee that interference will not occur in a particular installation. If this equipment does cause harmful interference to radio or television reception, which can be determined by turning the equipment off and on, the user is encouraged to try to correct the interference by one or more of the following measures:

- Reorient or relocate the receiving antenna.
- Increase the separation between the equipment and receiver.
- Connect the equipment into an outlet on a circuit different from that to which the receiver is connected.
- Consult the dealer or experienced radio/TV technician for help.

This device complies with Part 15 of the FCC Rules. Operation is subject to the following two conditions:

- (1) This device may not cause harmful interference and
- (2) this device must not accept any interference received, including interference that may cause undesired operation.

Changes or modifications not expressly approved by the party responsible for compliance could void the user's authority to operate the equipment.

The device has been evaluated to meet general RF exposure requirement. The device can be used in portable exposure condition without restriction.

WARNING: Cancer and Reproductive Harm
www.P65Warnings.ca.gov
Made in China



折线

刀模线

尺寸: 100x50mm 材质: 157g双铜 (5折页双面印刷)

K:50