

AT56L7 Internal photos

- Inside View of Product



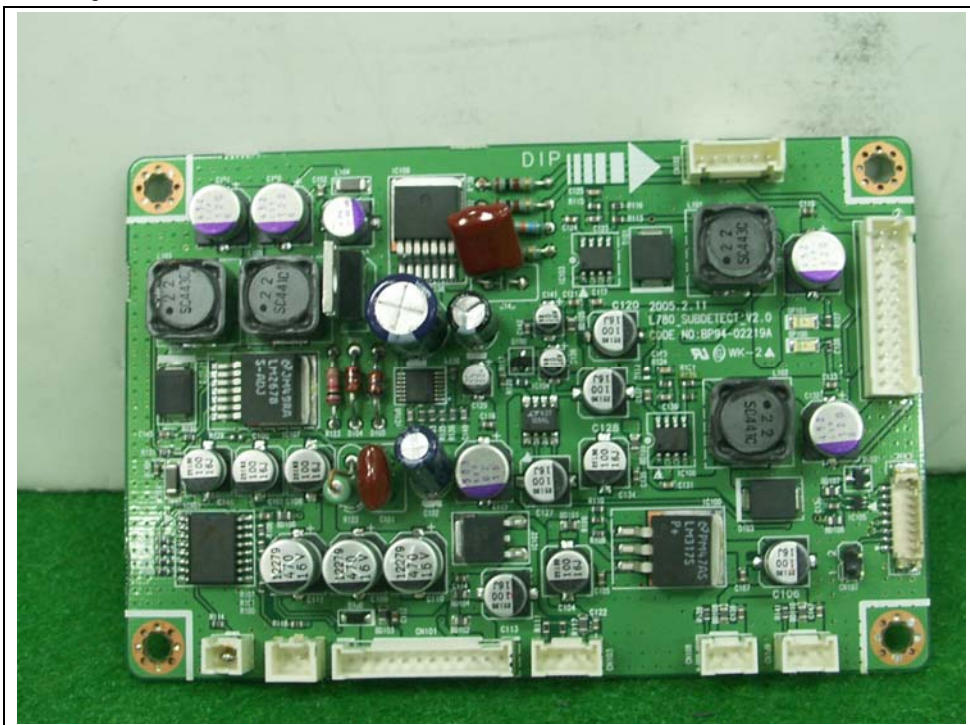
EMC Compliance Ltd.

82-1, JEIL-RI, YANGJI-MYUN, YONGIN-CITY, KYUNGGI-DO, KOREA

TEL: 82 31 336 9919 FAX : 82 31 336 4767

This test report shall not be reproduced except in full, Without the written approval

- Beam Project Main-



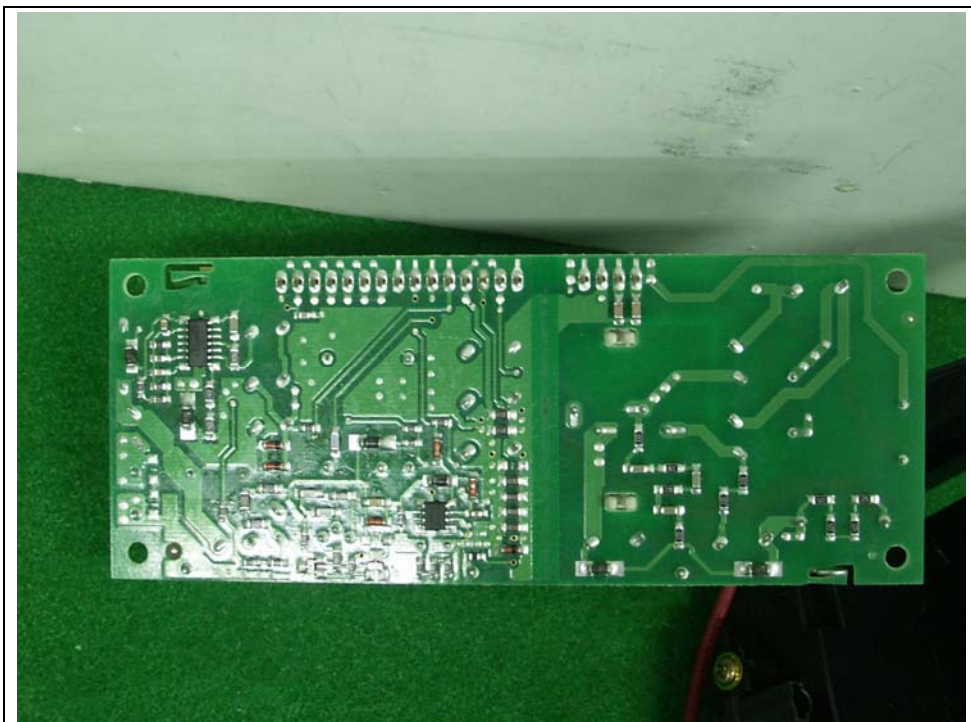
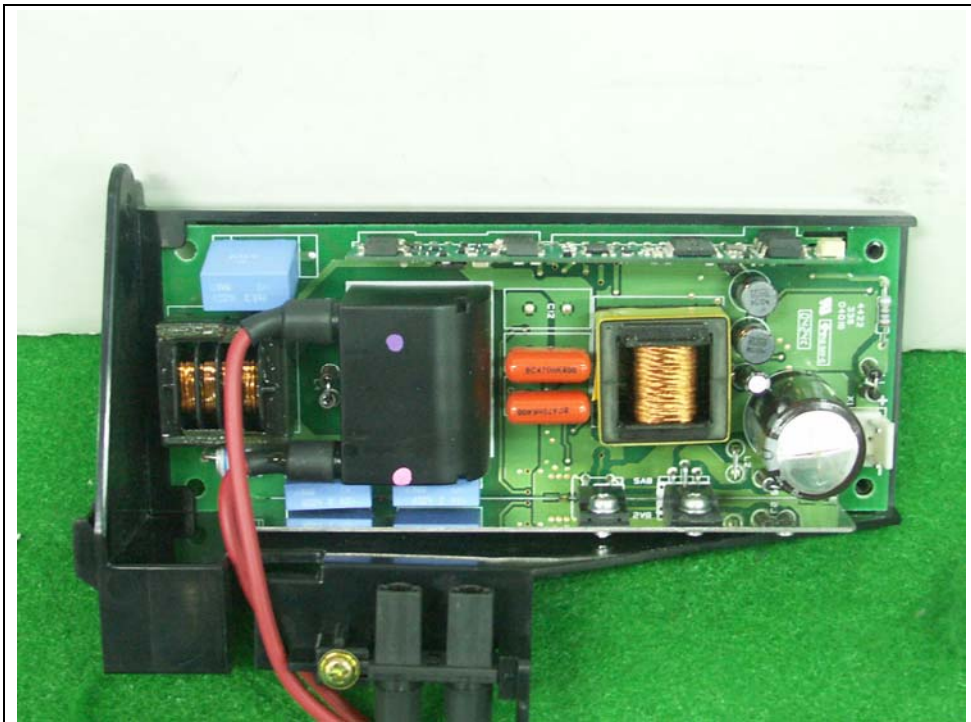
EMC Compliance Ltd.

82-1, JEIL-RI, YANGJI-MYUN, YONGIN-CITY, KYUNGGI-DO, KOREA

TEL: 82 31 336 9919 FAX : 82 31 336 4767

This test report shall not be reproduced except in full, Without the written approval

- Beam Project Power-



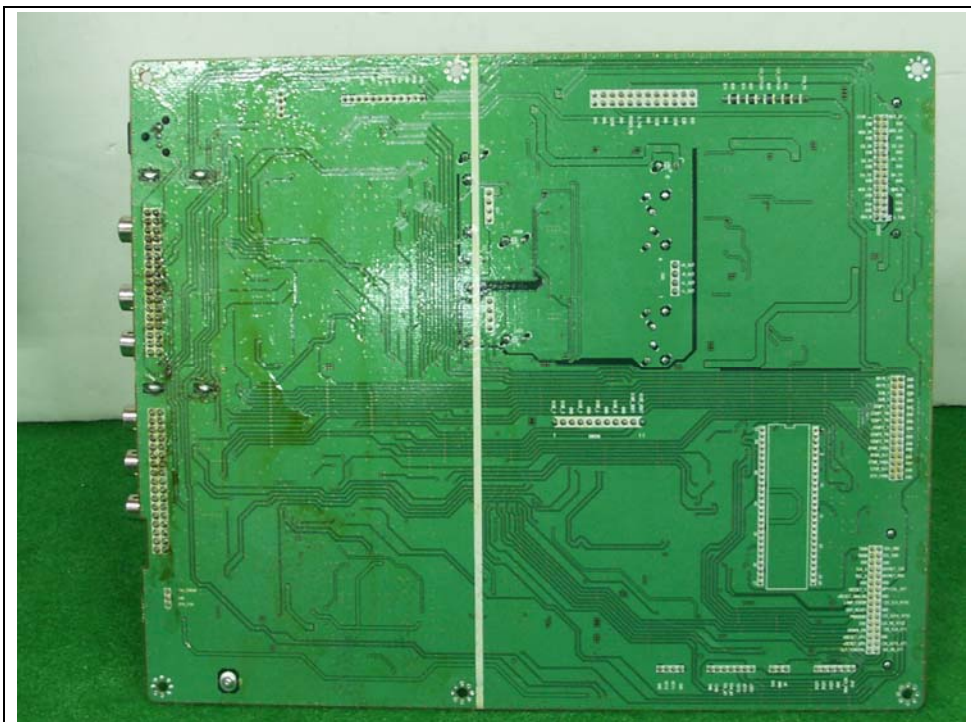
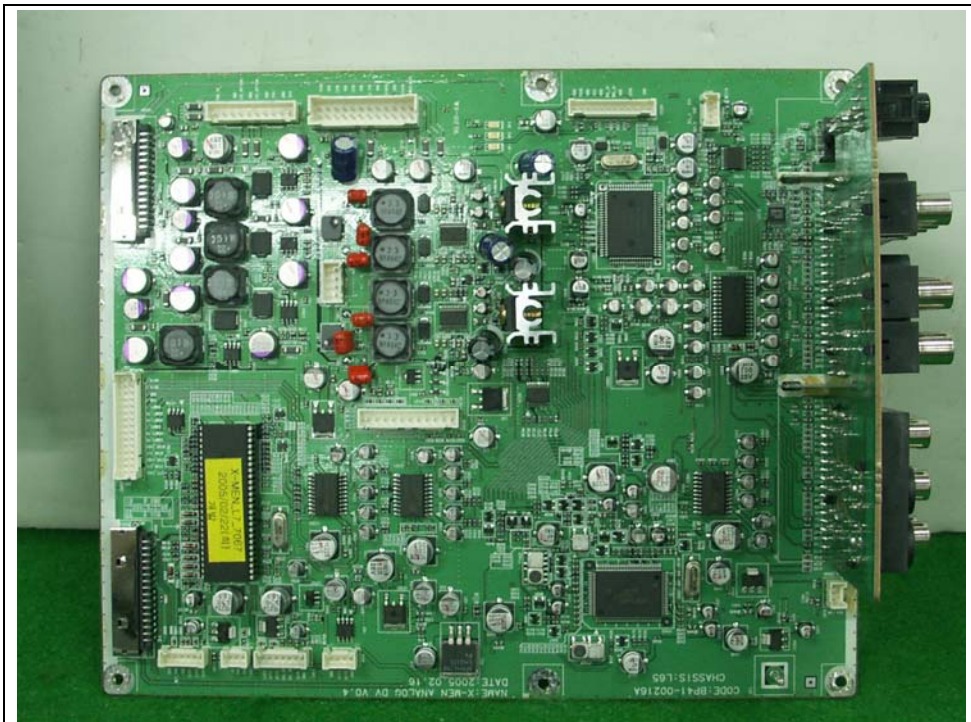
EMC Compliance Ltd.

82-1, JEIL-RI, YANGJI-MYUN, YONGIN-CITY, KYUNGKI-DO, KOREA

TEL: 82 31 336 9919 FAX : 82 31 336 4767

This test report shall not be reproduced except in full, Without the written approval

- Main Board-



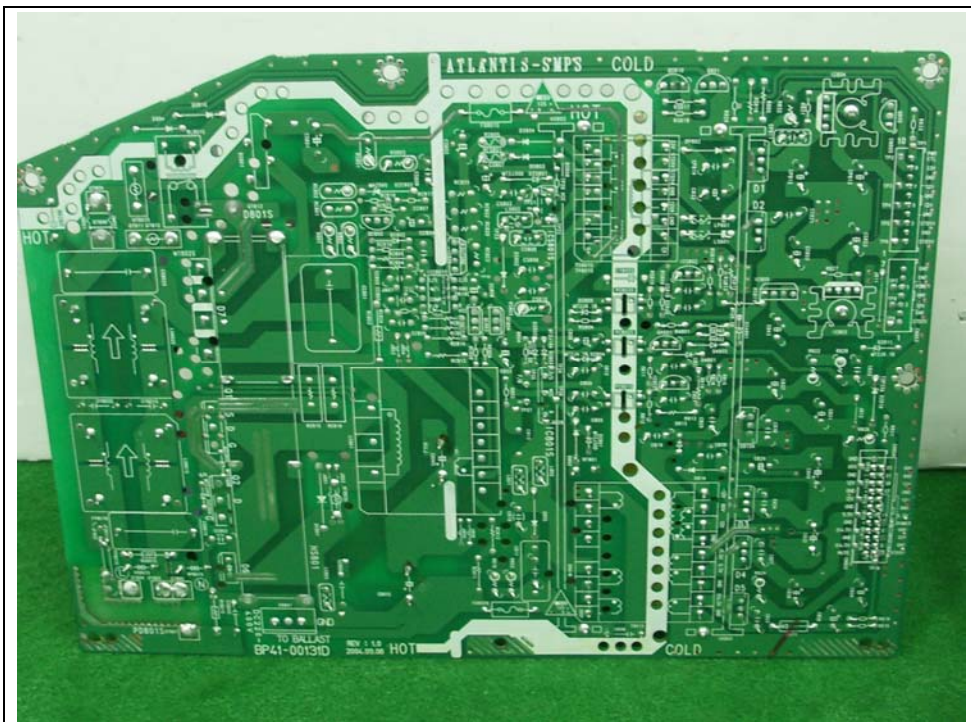
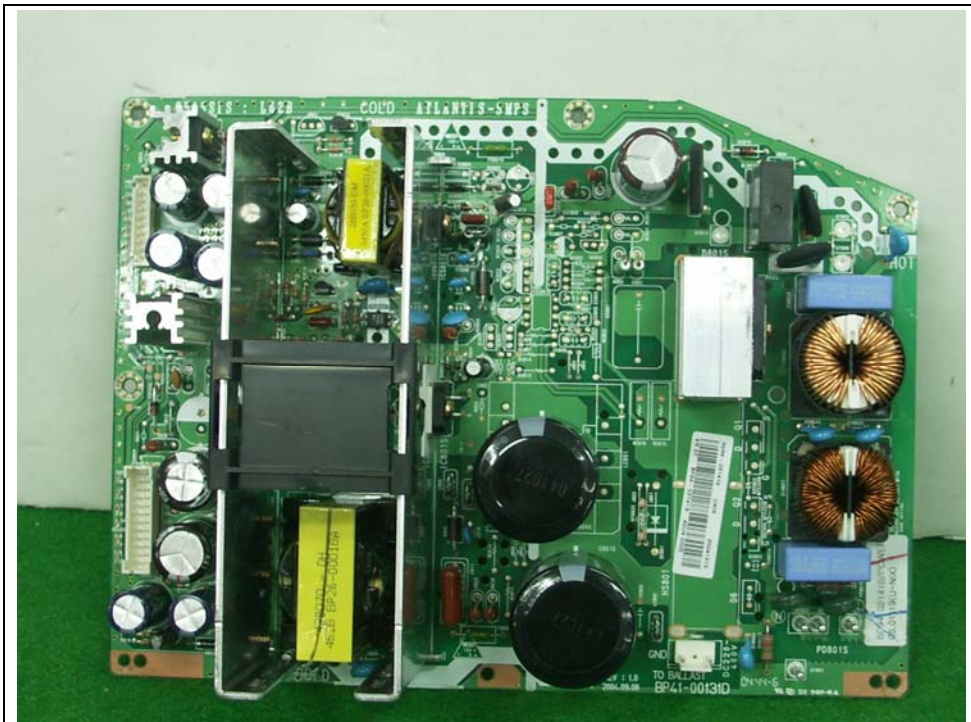
EMC Compliance Ltd.

82-1, JEIL-RI, YANGJI-MYUN, YONGIN-CITY, KYUNGGI-DO, KOREA

TEL: 82 31 336 9919 FAX : 82 31 336 4767

This test report shall not be reproduced except in full, Without the written approval

- SMPS-



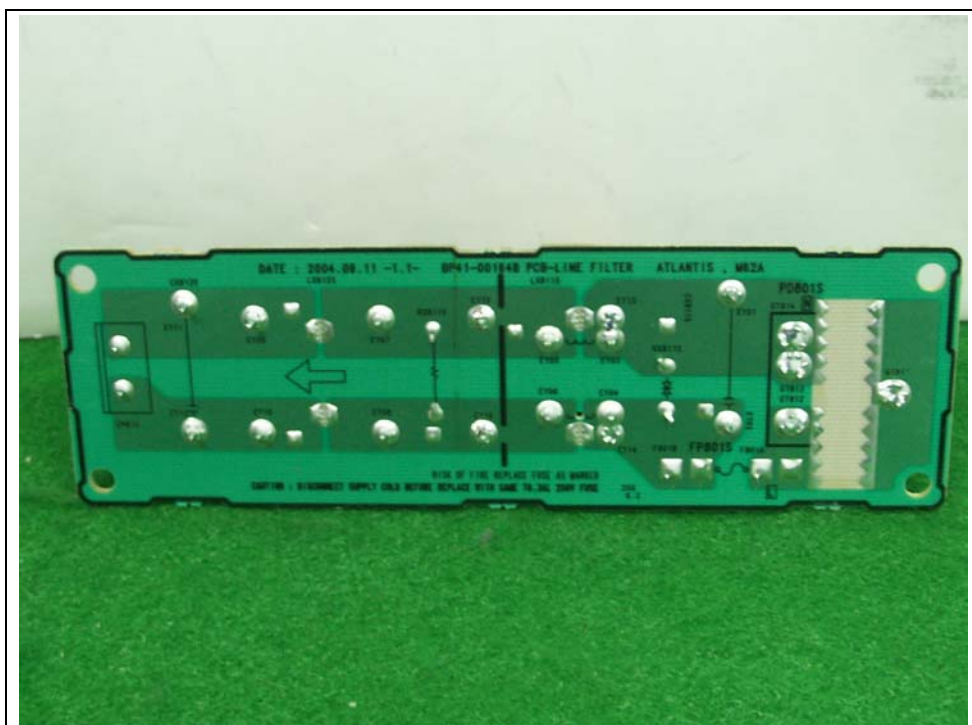
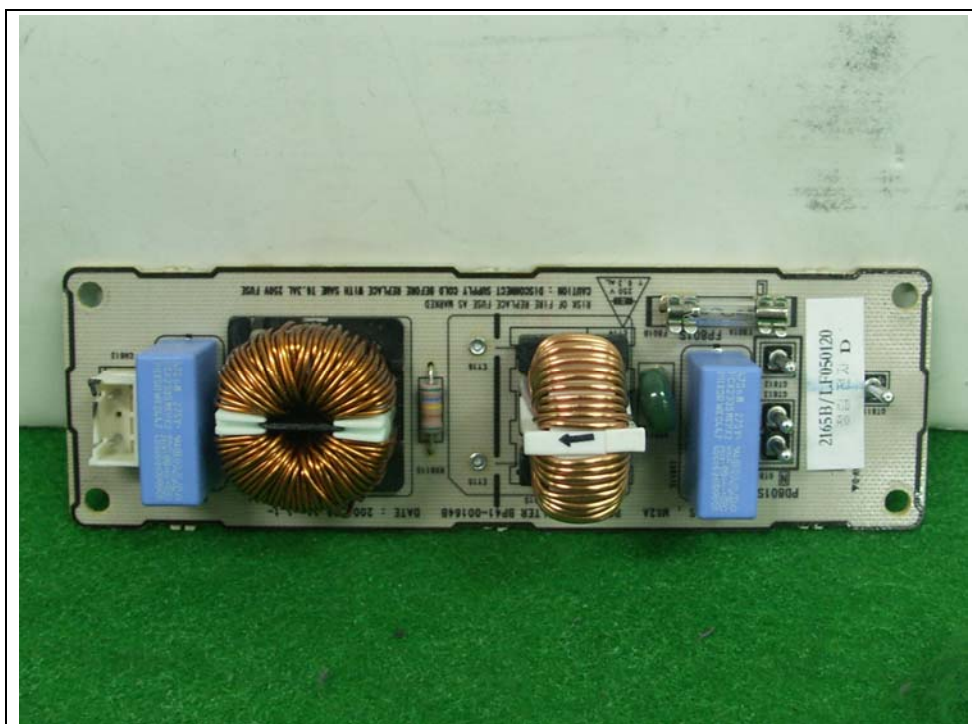
EMC Compliance Ltd.

82-1, JEIL-RI, YANGJI-MYUN, YONGIN-CITY, KYUNGGI-DO, KOREA

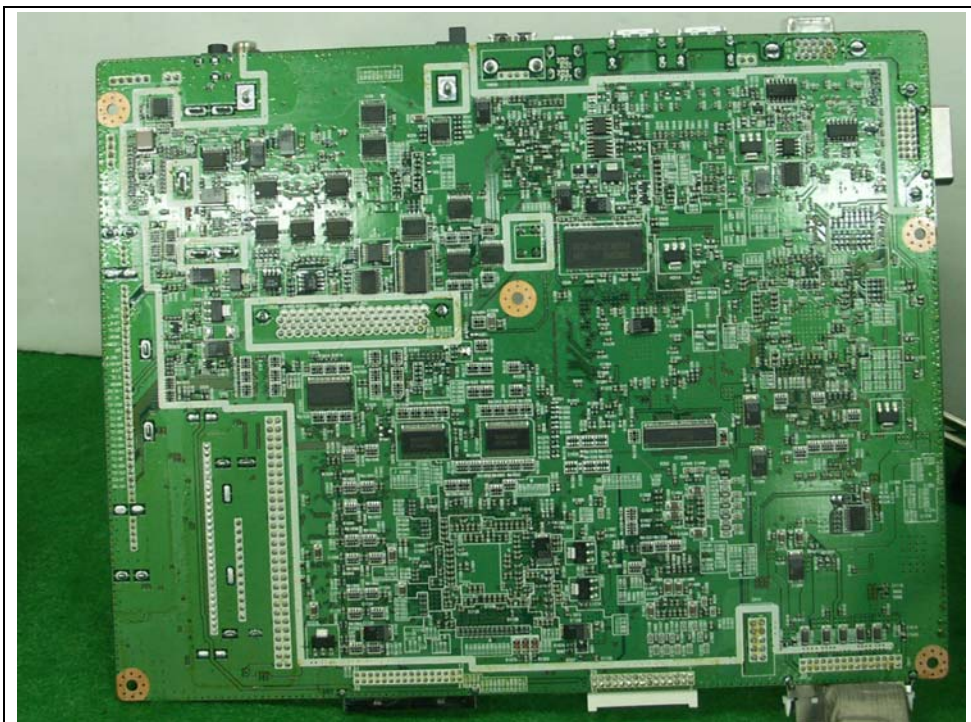
TEL: 82 31 336 9919 FAX : 82 31 336 4767

This test report shall not be reproduced except in full, Without the written approval

- SMPS SUB-



- SUB-



EMC Compliance Ltd.

82-1, JEIL-RI, YANGJI-MYUN, YONGIN-CITY, KYUNGGI-DO, KOREA

TEL: 82 31 336 9919 FAX : 82 31 336 4767

This test report shall not be reproduced except in full, Without the written approval