

PS20

Personal Shopper



Quick Start Guide



ZEBRA

Copyright

© 2018 ZIH Corp. and/or its affiliates. All rights reserved. ZEBRA and the stylized Zebra head are trademarks of ZIH Corp., registered in many jurisdictions worldwide. Google, Android, Google Play and other marks are trademarks of Google LLC. All other trademarks are the property of their respective owners.

COPYRIGHTS & TRADEMARKS: For complete copyright and trademark information, go to www.zebra.com/copyright.

WARRANTY: For complete warranty information, go to www.zebra.com/warranty.

END USER LICENSE AGREEMENT: For complete EULA information, go to www.zebra.com/eula.

Terms of Use

Proprietary Statement

This manual contains proprietary information of Zebra Technologies Corporation and its subsidiaries ("Zebra Technologies"). It is intended solely for the information and use of parties operating and maintaining the equipment described herein. Such proprietary information may not be used, reproduced, or disclosed to any other parties for any other purpose without the express, written permission of Zebra Technologies.

Product Improvements

Continuous improvement of products is a policy of Zebra Technologies. All specifications and designs are subject to change without notice.

Liability Disclaimer

Zebra Technologies takes steps to ensure that its published Engineering specifications and manuals are correct; however, errors do occur. Zebra Technologies reserves the right to correct any such errors and disclaims liability resulting therefrom.

Limitation of Liability

In no event shall Zebra Technologies or anyone else involved in the creation, production, or delivery of the accompanying product (including hardware and software) be liable for any damages whatsoever (including, without limitation, consequential damages including loss of business profits, business interruption, or loss of business information) arising out of the use of, the results of use of, or inability to use such product, even if Zebra Technologies has been advised of the possibility of such damages. Some jurisdictions do not allow the exclusion or limitation of incidental or consequential damages, so the above limitation or exclusion may not apply to you.

Warranty

For the complete Zebra hardware product warranty statement, go to: www.zebra.com/warranty.

Service Information

Before you use the unit, it must be configured to operate in your facility's network and run your applications.

If you have a problem using your equipment, contact your facility's Technical or Systems Support. If there is a problem with the equipment, they will contact the Zebra Global Customer Support at www.zebra.com/support.

For the latest version of this guide go to: www.zebra.com/support.

Provide Documentation Feedback

If you have comments, questions, or suggestions about this guide, send an email to EVM-Techdocs@zebra.com.

Configurations

This guide covers the following configurations:

Table 1 Configurations

Configuration	Radios	Display	Memory	Data Capture Options	Operating System
PS20 Base	WLAN: 802.11 a/b/g/n/d/h/i/k/r/v/ac WPAN: Bluetooth v5.0	WVGA 4.0" color	4 GB RAM/16 GB Flash	SE2100	Android Open Source Project (AOSP)/ Google Mobile Services (GMS) 8.1
PS20 Plus	WLAN: 802.11 a/b/g/n/d/h/i/k/r/v/ac WPAN: Bluetooth v5.0	WVGA 4.0" color	4 GB RAM/16 GB Flash	SE4710 + Digimarc	Android Open Source Project (AOSP)/ Google Mobile Services (GMS) 8.1

Unpacking

Carefully remove all protective material from the device and save the shipping container for later storage and shipping.

Verify that the box contains all the equipment listed below:

- PS20 (includes lithium-ion battery)
- Regulatory Guide

Inspect the equipment for damage. If you are missing any equipment or if you find any damaged equipment, contact Support immediately. See [Service Information on page 2](#) for contact information.

Removing the Screen Protection Film

A screen protection film is applied to the PS20 screen to protect the screen during shipping. To remove the screen protector, carefully lift the thin film off the touch screen display.

Features

Figure 1 Features - Front View

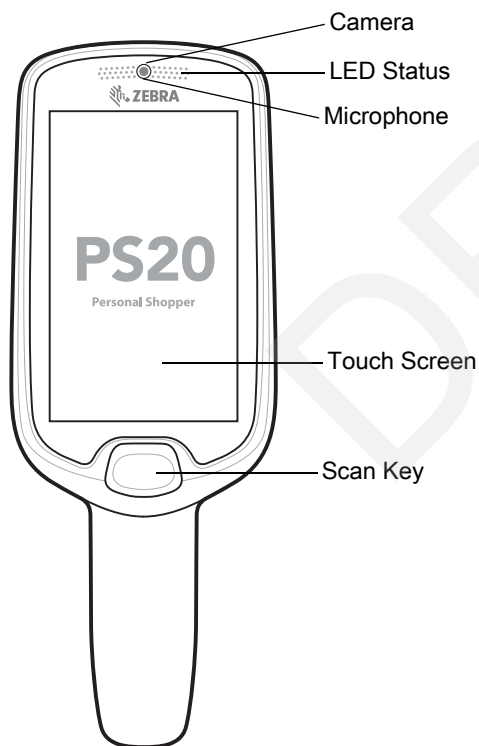
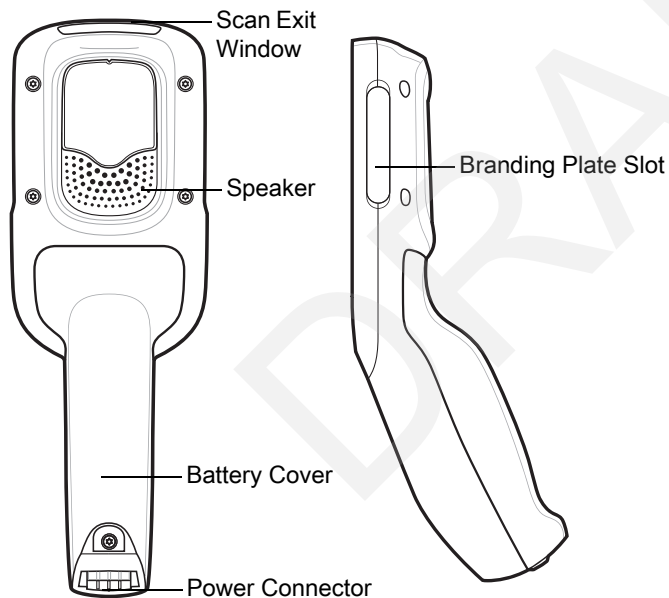


Table 2 Features - Front View

Item	Function
Camera	Takes photos and videos. Available on Plus configurations.
LED Status	Indicates the battery charge state while charging or the scan/decode status. Red: Barcode scan in progress (Scan key is pressed). Single Green Blink: Successful decode.
Microphone	Use for communications in Speakerphone mode. Available on Plus configurations.
Touch Screen	Displays all information needed to operate the device.
Scan Key	Indicates data capture when a scan application is enabled.

Figure 2 Features - Back and Side View

Table 3 Features - Back and Side View

Item	Function
Scan Exit Window	Provides data capture using the scanner.
Speaker	Provides audio output for video and music playback.

Table 3 Features - Back and Side View (Continued)

Item	Function
Battery Cover	Encloses the battery and attaches to the device's handle.
Power Connector	Provides device charging via charging cradles and used to perform a hard reset with the terminal reboot tool.
Branding Plate Slot	Provides space for custom logo.

Setup

To start using the device for the first time:

- Charge the battery to at least 30% capacity.

Charging the Battery

To charge the battery:

1. Ensure the cradle is connected to the appropriate power source.
2. Insert the PS20 into a cradle.

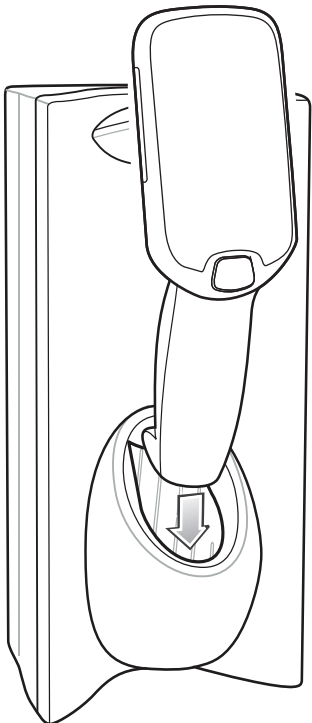
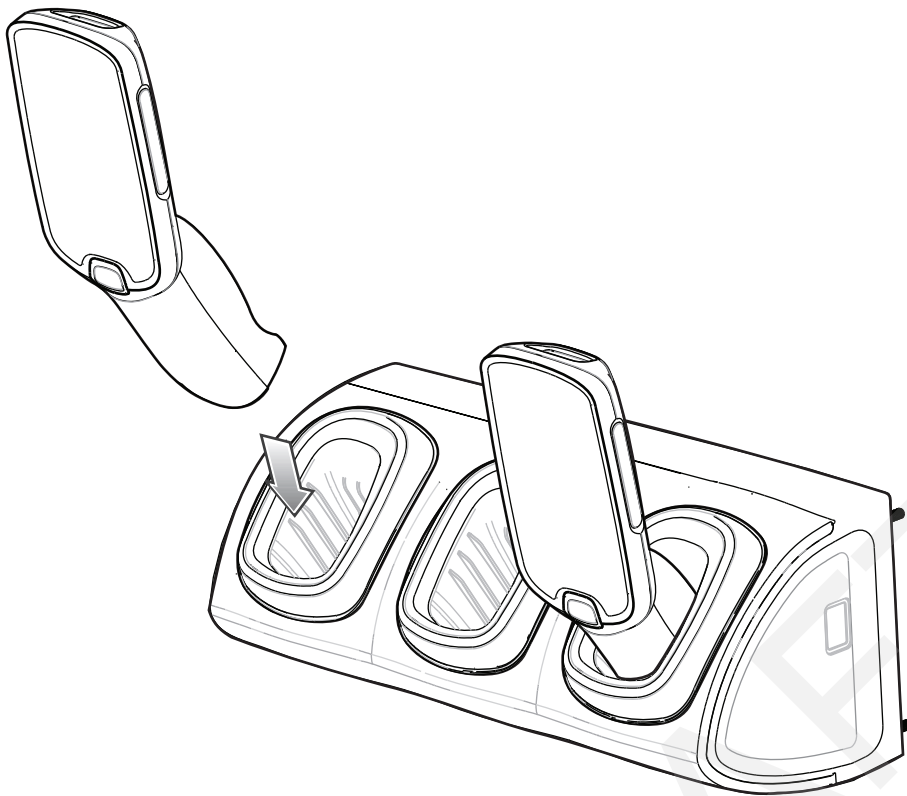

Figure 3 Single Slot Cradle

Figure 4 Three Slot Cradle



The battery charges 0 to 90% depending on the following conditions, measured at room temperature:

- When connected to a 1.0 cradle (normal charge mode), charge time is less than four hours.
- When connected to a 1.5 cradle (fast charge mode), charge time is less than three hours.

 **NOTE** To charge the battery in the device, it is recommended to use a charging cradle instead of the USB cable, since it is more time efficient.

LED Status Indicators

By default, the charging LED indication is disabled.

To enable the charging LED indication:



1. Swipe down from the status bar to open the quick access panel and then touch .
2. Touch **Display**.
3. Touch **Charging LED**. The option switch turns green.
4. Touch .

Table 4 LED Status Indicators

LED State	Indication
Imaging	
Off	Normal operation or PS20 is turned off.

Table 4 LED Status Indicators (Continued)

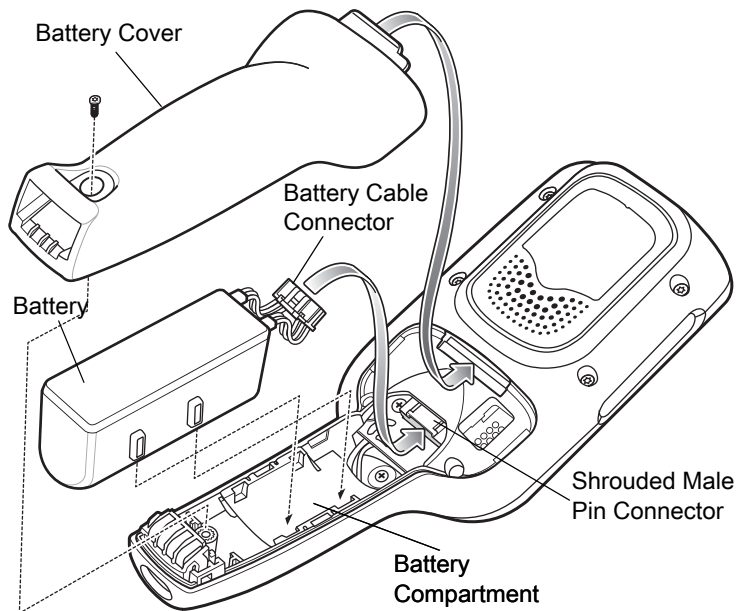
LED State	Indication
Red	Imaging in progress (Scan key is pressed).
Single Green Blink	Successful decode.
Charging (PS20 docked in cradle)	
Off	Power not applied to cradle. PS20 not inserted properly. Charging LED feature disabled.
Blinking Green	Charging.
Solid Green	Charging complete.
Blinking Red	Charging error, for example: <ul style="list-style-type: none"> • Temperature is too low or too high. • Charging has gone on too long without completion (typically eight hours).

Installing the Battery

To install the battery:


1. Remove the screw that secures the battery cover, using a Phillips screwdriver.
2. Lift the battery cover from the handle.
3. Guide and press the battery cable connector into the shrouded male pin connector inside the battery compartment. The connector is designed to only fit one way.
4. Place the battery inside the battery compartment.
5. Place the battery cover onto the handle.
6. Secure the battery cover with the screw, using a Phillips screwdriver.

Figure 5 Installing the Battery



Removing the Battery

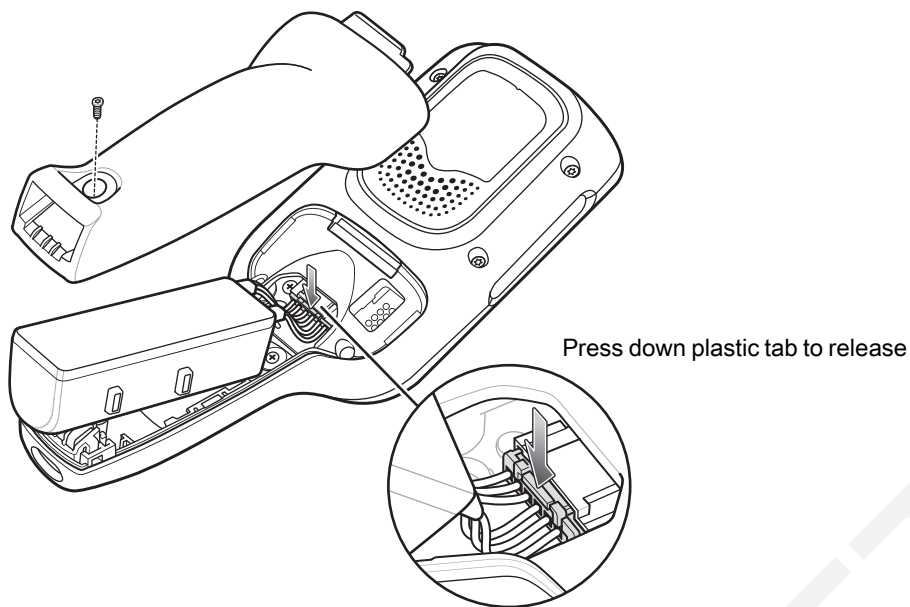
To remove the battery:

1. Touch and hold the soft power button  until the menu appears.
2. Touch **Power Off**.
3. Touch **OK**.



CAUTION The PS20 must be off before removing the battery. Failing to turn off the PS20 before removing the battery may damage the data stored on flash memory or corrupt the operating system files.

4. Remove the screw that secures the battery cover, using a Phillips screwdriver.
5. Lift the battery cover from the handle.
6. Inside the battery compartment, press down the plastic tab of the battery cable connector and slide it out of the shrouded male pin connector.
7. Remove the battery from the battery compartment.

Figure 6 Remove the Battery

Releasing the PS20 from the Charging Cradles


Use one of the following methods to release the PS20 from the charging cradles:

- Software Release Using the Menu
- Software Release Using the Cradle Utility
- Manual Release using a Release Key.

Software Release Using the Menu

The PS20 cradles contain a locking mechanism that locks the PS20 inside the cradle when docked. The PS20 releases from the cradle when a software command is received from the system.

To remove the PS20 from the cradle using the menu:

1. Touch and hold the soft power button  until the menu appears.
2. Touch **Cradle unlock**. The cradle unlocks the PS20.
3. Remove the PS20 from the cradle.

Software Release Using the Cradle Utility

The PS20 cradles contain a locking mechanism that locks the PS20 inside the cradle when docked. The PS20 releases from the cradle when a software command is received from the system.

To remove the PS20 from the cradle using the Cradle Utility:

1. On the Home screen, swipe up from the bottom of the screen.
2. Touch **CradleUtility**.
3. Tap the **CRADLE UNLOCK** tab to set the cradle unlock information.
4. Touch **Unlock Cradle**.

Manual Release Using a Release Key

The PS20 cradles contain a locking mechanism that locks the PS20 inside the cradle when docked. If the PS20 fails to unlock during normal operation, use a release key to unlock the PS20.



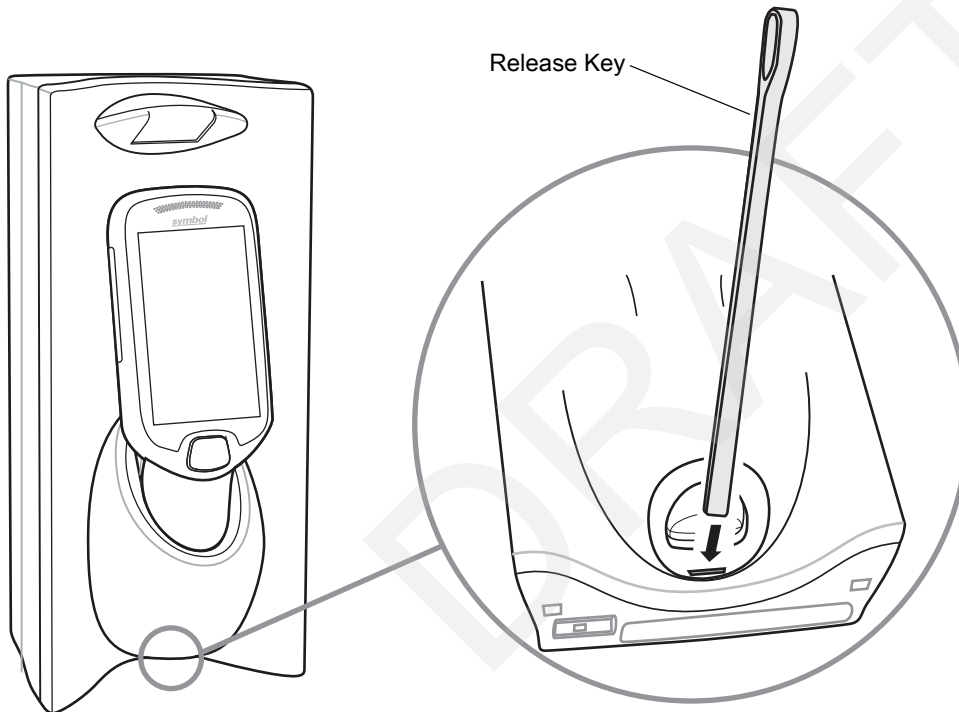
CAUTION Do not use any device to unlock the cradle other than the tools described below. Failure to comply could result in damage to the cradle and void the warranty.

Manual Release of the PS20 from the Single Slot Cradle

To release a locked PS20 from a Single Slot Cradle:

1. Insert the release key into the slot located at the bottom side of the cradle.
2. While pressing the release key all the way into the slot, remove the PS20 from the cradle.

Figure 7 Manual Release of PS20 from a Single Slot Cradle

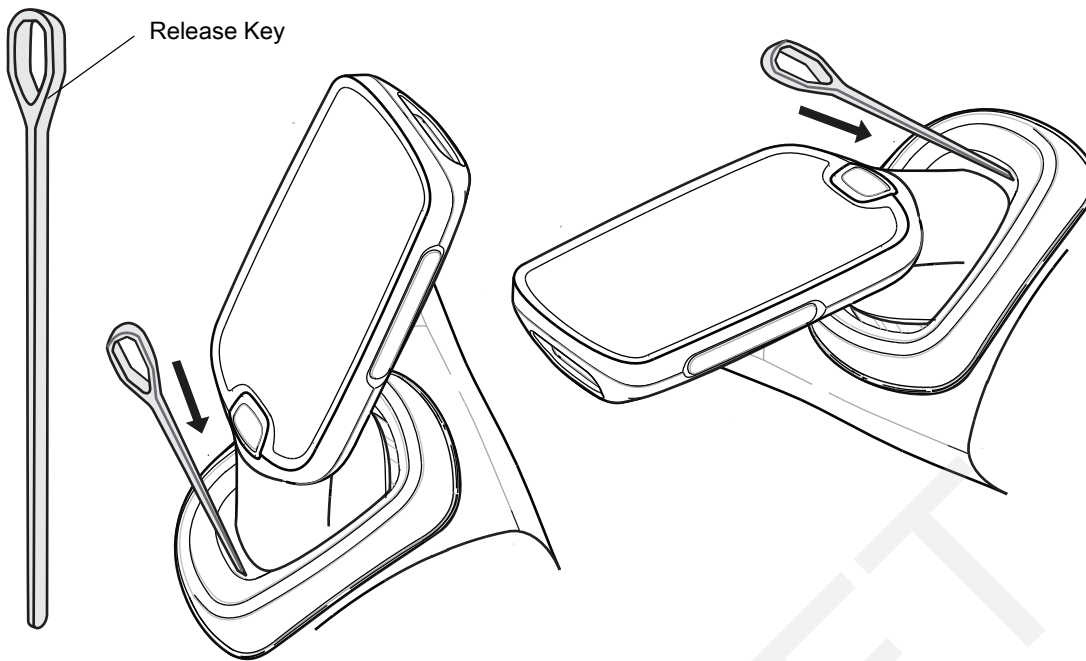


Manual Release of the PS20 from the Three Slot Cradle

To release a locked PS20 from a Three Slot Cradle:

1. Insert the release key straight into the slot, to a point where the bend stops.
2. Hold the release key pressed inside the slot and remove the PS20 from the slot.

Figure 8 Manual Release of the PS20 from a Three Slot Cradle



Scanning

To scan a barcode:

1. Launch a scanning application.
2. Press the Scan key and aim the device at a barcode.
3. Adjust the position of the device so that the red aiming dot appears at the center of the barcode.
4. Press the Scan key.

The Status LED illuminates red. Upon successful decode, the Status LED changes from red to green and an audible beep sounds.

Figure 9 Imager Illumination Frame



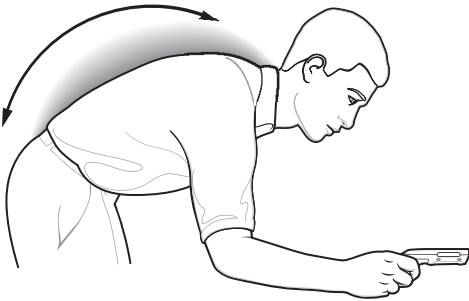
5. Release the Scan key.
The barcode data displays on the screen.

Ergonomic Considerations

Taking breaks and task rotation is recommended.

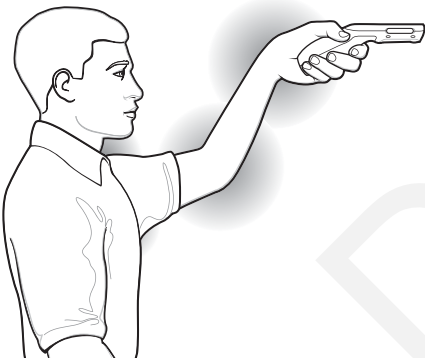
Avoid Bending

Figure 10 Avoid Bending



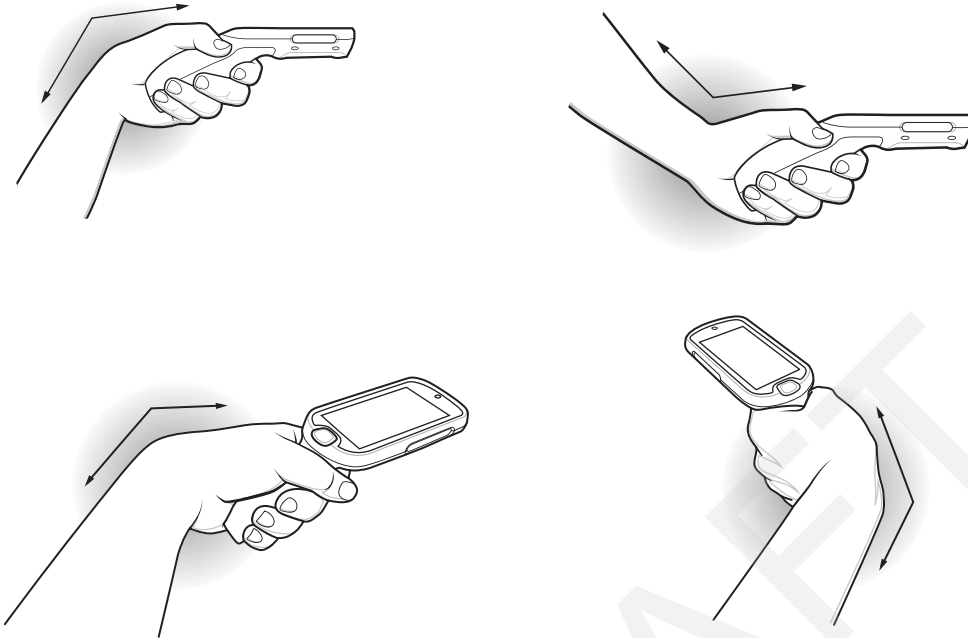
Avoid Reaching

Figure 11 Avoid Reaching



Avoid Extreme Wrist Angles

Figure 12 Avoid Extreme Wrist Angles



DRAFT

DRAFT