

SAR Test Report

Product Name : RhythmStar
Model No. : RS-10002
FCC ID : 2ACA9-10002

Applicant : Rhythmedix, LLC
Address : 5000 Atrium Way, Ste. 1, Mt. Laurel, NJ
08054, USA

Date of Receipt : Apr. 10, 2014
Date of Test : Apr. 10, 2014
Issued Date : Apr. 25, 2014
Report No. : 1440261R-HP-US-P03V01
Report Version : V1.0



The test results relate only to the samples tested.

The test report shall not be reproduced except in full without the written approval of QuieTek Corporation.

Test Report Certification

Issued Date: Apr. 25, 2014

Report No.: 1440261R-HP-US-P03V01



Product Name : RhythmStar

Applicant : Rhythmedix, LLC

Address : 5000 Atrium Way, Ste. 1, Mt. Laurel, NJ 08054, USA

Manufacturer : Rhythmedix, LLC

Address : 5000 Atrium Way, Ste. 1, Mt. Laurel, NJ 08054, USA

Model No. : RS-10002

FCC ID : 2ACA9-10002

Brand Name : RhythmMedix, RhythmStar

EUT Voltage : DC 3.7V

Applicable Standard : FCC KDB Publication 447498 D01v05r02
FCC KDB Publication 648474 D04v01r02
FCC KDB Publication 865664 D01v01r03
FCC KDB Publication 941225 D01~D06

Test Result : Max. SAR Measurement (1g)
Body-worn: 1.44 W/kg

Performed Location : Suzhou EMC Laboratory
No.99 Hongye Rd., Suzhou Industrial Park Loufeng
Hi-TechDevelopment Zone., Suzhou, China
TEL: +86-512-6251-5088 / FAX: +86-512-6251-5098
FCC Registration Number: 800392

Documented By : Alice Ni

Reviewed By : James Yuan

Approved By : Jeff Chen

Laboratory Information

We, **QuieTek Corporation**, are an independent EMC and safety consultancy that was established the whole facility in our laboratories. The test facility has been accredited/accepted(audited or listed) by the following related bodies in compliance with ISO 17025, EN 45001 and specified testing scope:

| | | |
|----------------------|----------|-----------------------|
| Taiwan R.O.C. | : | BSMI, NCC, TAF |
| Germany | : | TUV Rheinland |
| Norway | : | Nemko, DNV |
| USA | : | FCC |
| Japan | : | VCCI |
| China | : | CNAS |

The related certificate for our laboratories about the test site and management system can be downloaded from QuieTek Corporation's Web Site :<http://www.quietek.com/tw/ctg/cts/accreditations.htm>

The address and introduction of QuieTek Corporation's laboratories can be founded in our Web site :

<http://www.quietek.com/>

If you have any comments, Please don't hesitate to contact us. Our contact information is as below:

HsinChu Testing Laboratory :

No.75-2, 3rd Lin, Wangye Keng, Yonghxing Tsuen, Qionglin Shiang, Hsinchu County 307, Taiwan, R.O.C.

TEL:+886-3-592-8858 / FAX:+886-3-592-8859

E-Mail : service@quietek.com

LinKou Testing Laboratory :

No.5-22, Ruishukeng, Linkou Dist., New Taipei City 24451, Taiwan, R.O.C.

TEL : 886-2-8601-3788 / FAX : 886-2-8601-3789

E-Mail : service@quietek.com

Suzhou Testing Laboratory :

No.99 Hongye Rd., Suzhou Industrial Park Loufeng Hi-Tech Development Zone., SuZhou, China

TEL : +86-512-6251-5088 / FAX : 86-512-6251-5098

E-Mail : service@quietek.com

TABLE OF CONTENTS

| Description | Page |
|--|-----------|
| 1. General Information | 6 |
| 1.1. EUT Description | 6 |
| 1.2. Test Environment..... | 7 |
| 1.3. EUT Antenna Locations..... | 7 |
| 1.4. SAR Test Exclusions Applied..... | 8 |
| 1.5. Power Reduction for SAR..... | 8 |
| 1.6. Guidance Documents | 8 |
| 2. SAR Measurement System | 9 |
| 2.1. DASY5 System Description..... | 9 |
| 2.1.1. Applications | 10 |
| 2.1.2. Area Scans | 10 |
| 2.1.3. Zoom Scan (Cube Scan Averaging) | 10 |
| 2.1.4. Uncertainty of Inter-/Extrapolation and Averaging | 10 |
| 2.2. DASY5 E-Field Probe..... | 11 |
| 2.2.1. Isotropic E-Field Probe Specification | 11 |
| 2.3. Boundary Detection Unit and Probe Mounting Device | 12 |
| 2.4. DATA Acquisition Electronics (DAE) and Measurement Server | 12 |
| 2.5. Robot..... | 13 |
| 2.6. Light Beam Unit..... | 13 |
| 2.7. Device Holder..... | 14 |
| 2.8. SAM Twin Phantom..... | 14 |
| 3. Tissue Simulating Liquid | 15 |
| 3.1. The composition of the tissue simulating liquid | 15 |
| 3.2. Tissue Calibration Result..... | 16 |
| 3.3. Tissue Dielectric Parameters for Head and Body Phantoms | 17 |
| 4. SAR Measurement Procedure | 18 |
| 4.1. SAR System Validation..... | 18 |
| 4.1.1. Validation Dipoles | 18 |
| 4.1.2. Validation Result | 19 |
| 4.2. SAR Measurement Procedure..... | 20 |
| 4.3. Body-Worn Accessory Configurations | 21 |
| 4.4. SAR Measurement Conditions for UMTS | 22 |

| | |
|--|-----------|
| 4.4.1. Output Power Verification | 22 |
| 4.4.2. Body SAR Measurements..... | 22 |
| 4.4.3. SAR Measurements for Devices with Rel 5 HSDPA..... | 22 |
| 5. SAR Exposure Limits | 23 |
| 6. Test Equipment List..... | 24 |
| 7. Measurement Uncertainty..... | 25 |
| 8. Conducted Power Measurement | 26 |
| 9. Test Results..... | 29 |
| 9.1. SAR Test Results Summary | 29 |
| 9.2. SAR Test Notes | 33 |
| Appendix A. SAR System Validation Data | 34 |
| Appendix B. SAR measurement Data | 36 |
| Appendix C. Test Setup Photographs & EUT Photographs..... | 64 |
| Appendix D. Probe Calibration Data | 65 |
| Appendix E. Dipole Calibration Data..... | 76 |
| Appendix F. DAE Calibration Data..... | 92 |

1. General Information

1.1. EUT Description

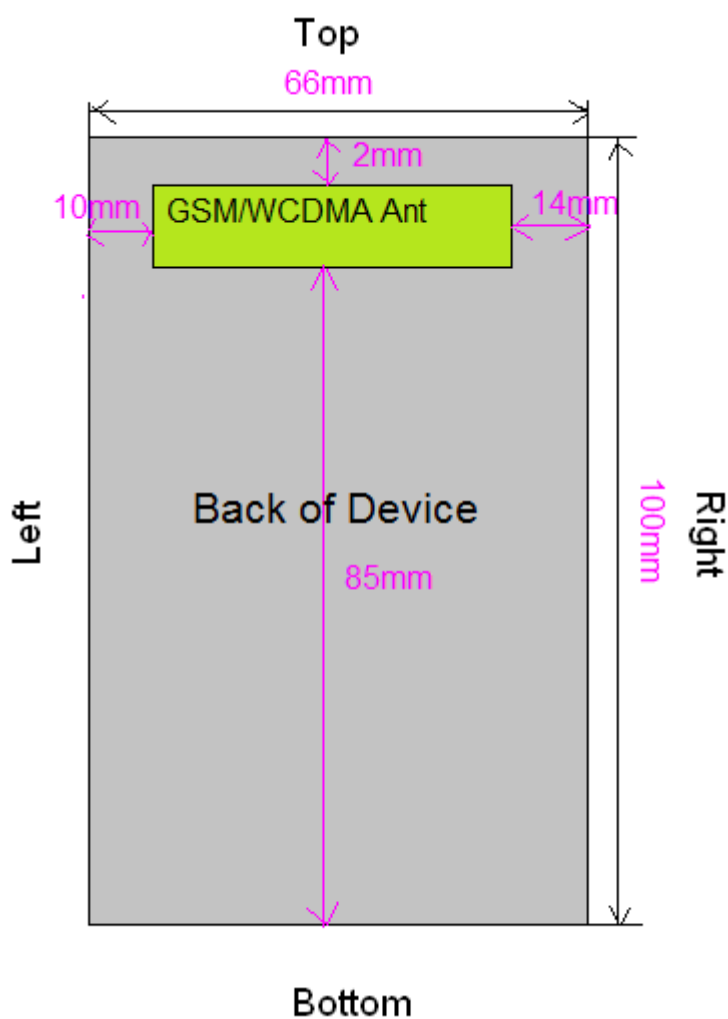
| | |
|-------------------------|--|
| Product Name | RhythmStar |
| Model No. | RS-10002 |
| IMEI : | 012813000097065 |
| Hardware Version | 1.7.2 |
| Software Version | 1.2.0 |
| Device Category | Portable |
| RF Exposure Environment | Uncontrolled |
| Antenna Type | Internal |
| 2G | |
| Support Band | GSM850/PCS1900 |
| GPRS Class | Class 12 |
| Uplink | GSM 850: 824~849MHz PCS 1900: 1850~1910MHz |
| Downlink | GSM 850: 869~894MHz PCS 1900: 1930~1990MHz |
| Release Version | R99 |
| Type of modulation | GMSK for GSM/GPRS 8PSK for EGSM/EGPRS |
| Antenna Gain | GSM 850: 1.8dBi PCS1900: 3.8dBi |
| 3G | |
| Support Band | WCDMA Band II/V |
| Uplink | WCDMA Band II:1850~1910MHz WCDMA Band V: 824~849MHz |
| Downlink | WCDMA Band II:1930~1990MHz WCDMA Band V: 869~894MHz |
| Release Version | Rel-6 |
| Type of modulation | QPSK for Uplink |
| Antenna Gain | WCDMA Band II: 3.8dBi WCDMA Band V: 1.8dBi |

1.2. Test Environment

Ambient conditions in the laboratory:

| Items | Required | Actual |
|------------------|----------|---------|
| Temperature (°C) | 18-25 | 21.5± 2 |
| Humidity (%RH) | 30-70 | 52 |

1.3. EUT Antenna Locations



Note: Manufacture have declared that the safe distance is 15mm at the operation manual, so we did SAR test at 15mm.

1.4. SAR Test Exclusions Applied

(A) Licensed Transmitter(s)

GSM/GPRS DTM is not supported for US bands. Therefore, the GSM Voice modes in this report do not transmit simultaneously with GPRS Data.

This device is only capable of QPSK HSPA in the uplink. Therefore, no additional SAR tests are required beyond that described for devices with HSPA in KDB 941225 D01v02.

When the user utilizes multiple services in UMTS 3G mode it uses multi-Radio Access Bearer or multi-RAB. The power control is based on a physical control channel (Dedicated Physical Control Channel [DPCCH]) and power control will be adjusted to meet the needs of both services.

1.5. Power Reduction for SAR

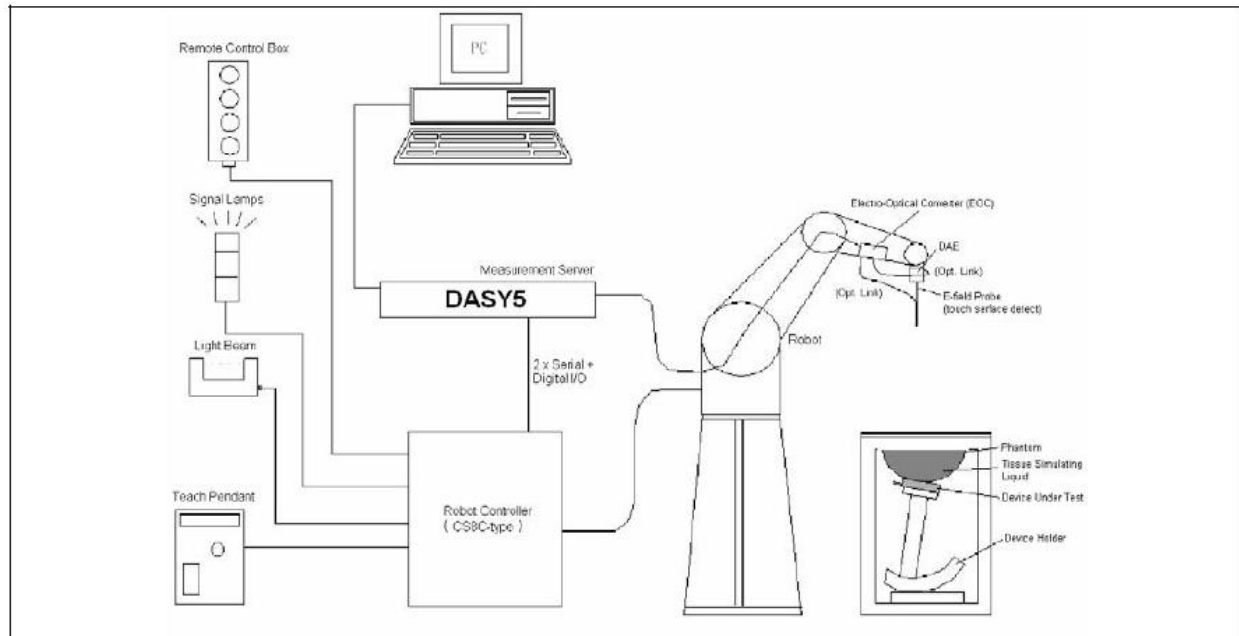
There is no power reduction used for any band/mode implemented in this device for SAR purposes.

1.6. Guidance Documents

- 1) FCC KDB Publication 941225 D01-D06 (2G, 3G and Hotspot)
- 2) FCC KDB Publication 447498 D01v05r02(General SAR Guidance)
- 3) FCC KDB Publication 865664 D01v01r03(SAR measurement 100 MHz to 6 GHz)
- 4) FCC KDB Publication 648474 D04v01r02(SAR Evaluation Considerations for Wireless Handsets)

2. SAR Measurement System

2.1. DASY5 System Description



The DASY5 system for performing compliance tests consists of the following items:

- A standard high precision 6-axis robot with controller, teach pendant and software. An arm extension for accommodating the data acquisition electronics (DAE).
- A data acquisition electronics (DAE) which performs the signal amplification, signal multiplexing, AD-conversion, offset measurements, mechanical surface detection, collision detection, etc. The unit is battery powered with standard or rechargeable batteries. The signal is optically transmitted to the EOC.
- The Electro-optical converter (EOC) performs the conversion from optical to electrical signals for the digital communication to the DAE. To use optical surface detection, a special version of the EOC is required. The EOC signal is transmitted to the measurement server.
- The Light Beam used is for probe alignment. This improves the (absolute) accuracy of the probe positioning.
- A computer running WinXP and the DASY5 software.
- Remote control and teach pendant as well as additional circuitry for robot safety such as warning lamps, etc.
- The phantom, the device holder and other accessories according to the targeted measurement.

2.1.1. Applications

Predefined procedures and evaluations for automated compliance testing with all worldwide standards, e.g., IEEE 1528, IEC 62209-1, IEC 62209-2, EN 50360, EN 50383 and others.

2.1.2. Area Scans

Area scans are defined prior to the measurement process being executed with a user defined variable spacing between each measurement point (integral) allowing low uncertainty measurements to be conducted. Scans defined for FCC applications utilize a 10mm² step integral, with 1mm interpolation used to locate the peak SAR area used for zoom scan assessments.

When an Area Scan has measured all reachable points, it computes the field maxima found in the scanned area, within a range of the global maximum. The range (in dB) is specified in the standards for compliance testing. For example, a 2 dB range is required in IEEE 1528-2013 and IEC 62209 standards, whereby 3 dB is a requirement when compliance is assessed in accordance with the ARIB standard (Japan).

2.1.3. Zoom Scan (Cube Scan Averaging)

Zoom Scans are used to assess the peak spatial SAR values within a cubic averaging volume containing 1 g and 10 g of simulated tissue. A density of 1000 kg/m³ is used to represent the head and body tissue density and not the phantom liquid density, in order to be consistent with the definition of the liquid dielectric properties, i.e. the side length of the 1 g cube is 10mm, with the side length of the 10 g cube 21,5mm.

The zoom scan integer steps can be user defined so as to reduce uncertainty, but normal practice for typical test applications utilize a physical step of 7x7x7 (5mmx5mmx5mm) providing a volume of 30mm in the X & Y axis, and 30mm in the Z axis.

2.1.4. Uncertainty of Inter-/Extrapolation and Averaging

In order to evaluate the uncertainty of the interpolation, extrapolation and averaged SAR calculation algorithms of the Postprocessor, DASY5 allows the generation of measurement grids which are artificially predefined by analytically based test functions. Therefore, the grids of area scans and zoom scans can be filled with uncertainty test data, according to the SAR benchmark functions of IEEE 1528. The three analytical functions shown in equations as below are used to describe the possible range of the expected SAR distributions for the tested handsets. The field gradients are covered by the spatially flat distribution f1, the spatially steep distribution f3 and f2 accounts for H-field cancellation on the phantom/tissue surface.

$$f_1(x, y, z) = Ae^{-\frac{z}{2a}} \cos^2 \left(\frac{\pi \sqrt{x'^2 + y'^2}}{2 \cdot 5a} \right)$$

$$f_2(x, y, z) = Ae^{-\frac{z}{a}} \frac{a^2}{a^2 + x'^2} \left(3 - e^{-\frac{2z}{a}} \right) \cos^2 \left(\frac{\pi y'}{2 \cdot 3a} \right)$$


$$f_3(x, y, z) = A \frac{a^2}{\frac{a^2}{4} + x'^2 + y'^2} \left(e^{-\frac{2z}{a}} + \frac{a^2}{2(a + 2z)^2} \right)$$

2.2. DASY5 E-Field Probe

The SAR measurement is conducted with the dosimetric probe manufactured by SPEAG. The probe is specially designed and calibrated for use in liquid with high permittivity. The dosimetric probe has special calibration in liquid at different frequency.

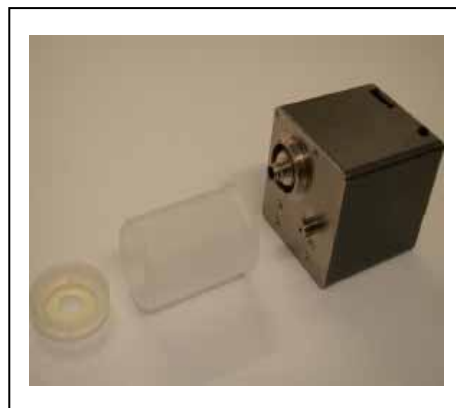
SPEAG conducts the probe calibration in compliance with international and national standards (e.g. IEEE 1528, EN 62209-1, IEC 62209, etc.) under ISO 17025. The calibration data are in Appendix D.

2.2.1. Isotropic E-Field Probe Specification

| | | |
|---------------|--|---|
| Model | EX3DV4 | |
| Construction | Symmetrical design with triangular core Built-in shielding against static charges PEEK enclosure material (resistant to organic solvents, e.g., DGBE) | |
| Frequency | 10 MHz to 6 GHz Linearity: ± 0.2 dB (30 MHz to 6 GHz) |  |
| Directivity | ± 0.3 dB in HSL (rotation around probe axis) ± 0.5 dB in tissue material (rotation normal to probe axis) | |
| Dynamic Range | 10 μ W/g to 100 mW/g Linearity: ± 0.2 dB (noise: typically < 1 μ W/g) | |
| Dimensions | Overall length: 330 mm (Tip: 20 mm) Tip diameter: 2.5 mm (Body: 12 mm) Typical distance from probe tip to dipole centers: 1 mm | |
| Application | High precision dosimetric measurements in any exposure scenario (e.g., very strong gradient fields). Only probe which enables compliance testing for frequencies up to 6 GHz with precision of better 30%. | |

2.3. Boundary Detection Unit and Probe Mounting Device

The DASY5 probes use a precise connector and an additional holder for the probe, consisting of a plastic tube and a flexible silicon ring to center the probe. The connector at the DAE is flexibly mounted and held in the default position with magnets and springs. Two switching systems in the connector mount detect frontal and lateral probe collisions and trigger the necessary software response.



2.4. DATA Acquisition Electronics (DAE) and Measurement Server

The data acquisition electronics (DAE) consists of a highly sensitive electrometer-grade preamplifier with auto-zeroing, a channel and gain-switching multiplexer, a fast 16 bit AD-converter and a command decoder and control logic unit.

Transmission to the measurement server is accomplished through an optical downlink for data and status information as well as an optical uplink for commands and the clock.

The input impedance of the DAE4 is 200M Ohm; the inputs are symmetrical and floating. Common mode rejection is above 80dB.



The DASY5 measurement server is based on a PC/104 CPU board with a 400MHz intel ULV Celeron, 128MB chipdisk and 128MB RAM. The necessary circuits for communication with the DAE electronics box, as well as the 16 bit AD converter system for optical detection and digital I/O interface are contained on the DASY5 I/O board, which is directly connected to the PC/104 bus of the CPU board.



2.5. Robot

The DASY5 system uses the high precision robots TX90 XL type out of the newer series from Stäubli SA (France). For the 6-axis controller DASY5 system, the CS8C robot controller version from Stäubli is used.

The XL robot series have many features that are important for our application:

- High precision (repeatability 0.02 mm)
- High reliability (industrial design)
- Jerk-free straight movements
- Low ELF interference (the closed metallic construction shields against motor control fields)
- 6-axis controller



2.6. Light Beam Unit

The light beam switch allows automatic "tooling" of the probe. During the process, the actual position of the probe tip with respect to the robot arm is measured, as well as the probe length and the horizontal probe offset. The software then corrects all movements, such that the robot coordinates are valid for the probe tip.

The repeatability of this process is better than 0.1 mm. If a position has been taught with an aligned probe, the same position will be reached with another aligned probe within 0.1 mm, even if the other probe has different dimensions. During probe rotations, the probe tip will keep its actual position.



2.7. Device Holder

The DASY5 device holder is designed to cope with different positions given in the standard. It has two scales for the device rotation (with respect to the body axis) and the device inclination (with respect to the line between the ear reference points). The rotation center for both scales is the ear reference point (EPR).

Thus the device needs no repositioning when changing the angles.

The DASY5 device holder has been made out of low-loss POM material having the following dielectric parameters: relative permittivity $\epsilon_r = 3$ and loss tangent $\delta = 0.02$. The amount of dielectric material has been reduced in the closest vicinity of the device, since measurements have suggested that the influence of the clamp on the test results could thus be lowered.



2.8. SAM Twin Phantom

The SAM twin phantom is a fiberglass shell phantom with 2mm shell thickness (except the ear region where shell thickness increases to 6mm). It has three measurement areas:

- Left head
- Right head
- Flat phantom



The bottom plate contains three pair of bolts for locking the device holder. The device holder positions are adjusted to the standard measurement positions in the three sections. A white cover is provided to tap the phantom during off-periods to prevent water evaporation and changes in the liquid parameters. On the phantom top, three reference markers are provided to identify the phantom position with respect to the robot.

3. Tissue Simulating Liquid

3.1. The composition of the tissue simulating liquid

| INGREDIENT (% Weight) | 835MHz Body | 1900MHz Body |
|--------------------------|----------------|-----------------|
| Water | 52.4 | 40.5 |
| Salt | 1.40 | 0.50 |
| Sugar | 45.0 | 58.0 |
| HEC | 1.00 | 0.50 |
| Preventol | 0.20 | 0.50 |
| DGBE | 0.00 | 0.00 |

3.2. Tissue Calibration Result

The dielectric parameters of the liquids were verified prior to the SAR evaluation using DASY5 Dielectric Probe Kit and Agilent Vector Network Analyzer E5071C

| Body Tissue Simulant Measurement | | | | |
|----------------------------------|---------------------------------|------------------------|----------------------|----------------------|
| Frequency [MHz] | Description | Dielectric Parameters | | Tissue Temp. [°C] |
| | | ϵ_r | σ [s/m] | |
| 835 MHz | Reference result ± 5% window | 55.2 52.44 to 57.96 | 0.97 0.92 to 1.02 | N/A |
| | 10-04-2014 | 53.72 | 0.99 | 21.0 |
| 1900 MHz | Reference result ± 5% window | 53.3 50.64 to 55.97 | 1.52 1.44 to 1.60 | N/A |
| | 10-04-2014 | 52.49 | 1.56 | 21.0 |

3.3. Tissue Dielectric Parameters for Head and Body Phantoms

The head tissue dielectric parameters recommended by the IEEE SCC-34/SC-2 in P1528 have been incorporated in the following table. These head parameters are derived from planar layer models simulating the highest expected SAR for the dielectric properties and tissue thickness variations in a human head. Other head and body tissue parameters that have not been specified in P1528 are derived from the tissue dielectric parameters computed from the 4-Cole-Cole equations described in Reference [12] and extrapolated according to the head parameters specified in P1528.

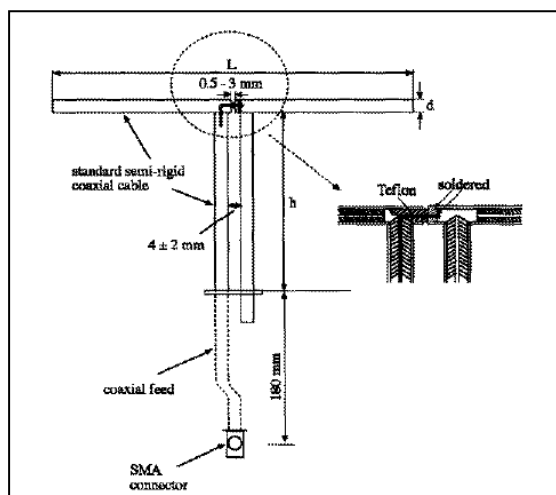
| Target Frequency | Head | | Body | |
|--------------------|--------------|----------------|--------------|----------------|
| (MHz) | ϵ_r | σ (S/m) | ϵ_r | σ (S/m) |
| 150 | 52.3 | 0.76 | 61.9 | 0.80 |
| 300 | 45.3 | 0.87 | 58.2 | 0.92 |
| 450 | 43.5 | 0.87 | 56.7 | 0.94 |
| 835 | 41.5 | 0.90 | 55.2 | 0.97 |
| 900 | 41.5 | 0.97 | 55.0 | 1.05 |
| 915 | 41.5 | 0.98 | 55.0 | 1.06 |
| 1450 | 40.5 | 1.20 | 54.0 | 1.30 |
| 1610 | 40.3 | 1.29 | 53.8 | 1.40 |
| 1800 – 2000 | 40.0 | 1.40 | 53.3 | 1.52 |
| 2450 | 39.2 | 1.80 | 52.7 | 1.95 |
| 3000 | 38.5 | 2.40 | 52.0 | 2.73 |
| 5800 | 35.3 | 5.27 | 48.2 | 6.00 |

(ϵ_r = relative permittivity, σ = conductivity and $\rho = 1000 \text{ kg/m}^3$)

4. SAR Measurement Procedure

4.1. SAR System Validation

4.1.1. Validation Dipoles



The dipoles used is based on the IEEE-1528 standard, and is complied with mechanical and electrical specifications in line with the requirements of both IEEE and FCC Supplement C. the table below provides details for the mechanical and electrical specifications for the dipoles.

| Frequency | L (mm) | h (mm) | d (mm) |
|-----------|--------|--------|--------|
| 835MHz | 161.0 | 89.8 | 3.6 |
| 1900MHz | 68.0 | 39.5 | 3.6 |

4.1.2. Validation Result

| System Performance Check at 835MHz, 1900MHz for Body | | | | |
|--|----------------------------------|------------------------|------------------------|-------------------|
| Validation Kit: D835V2-SN 4d094 | | | | |
| Frequency [MHz] | Description | SAR [w/kg] 1g | SAR [w/kg] 10g | Tissue Temp. [°C] |
| 835 MHz | Reference result ± 10% window | 9.57 8.61 to 10.53 | 6.33 5.70 to 6.96 | N/A |
| | 10-04-2014 | 10.12 | 6.60 | 21.0 |
| Validation Kit: D1900V2-SN 5d121 | | | | |
| Frequency [MHz] | Description | SAR [w/kg] 1g | SAR [w/kg] 10g | Tissue Temp. [°C] |
| 1900 MHz | Reference result ± 10% window | 38.7 34.83 to 42.57 | 20.4 18.36 to 22.44 | N/A |
| | 10-04-2014 | 39.92 | 20.68 | 21.0 |
| Note: All SAR values are normalized to 1W forward power. | | | | |

4.2. SAR Measurement Procedure

The DASY5 calculates SAR using the following equation,

$$SAR = \frac{\sigma |E|^2}{\rho}$$

σ : represents the simulated tissue conductivity

ρ : represents the tissue density

The EUT is set to transmit at the required power in line with product specification, at each frequency relating to the LOW, MID, and HIGH channel settings.

Pre-scans are made on the device to establish the location for the transmitting antenna, using a large area scan in either air or tissue simulation fluid.

The EUT is placed against the Universal Phantom where the maximum area scan dimensions are larger than the physical size of the resonating antenna. When the scan size is not large enough to cover the peak SAR distribution, it is modified by either extending the area scan size in both the X and Y directions, or the device is shifted within the predefined area.

The area scan is then run to establish the peak SAR location (interpolated resolution set at 1mm²) which is then used to orient the center of the zoom scan. The zoom scan is then executed and the 1g and 10g averages are derived from the zoom scan volume (interpolated resolution set at 1mm³).

4.3. Body-Worn Accessory Configurations

Body-worn operating configurations are tested with the belt-clips and holsters attached to the device and positioned against a flat phantom in a normal use configuration. Per FCC KDB Publication 648474 D04 v01r02, Body-worn accessory exposure is typically related to voice mode operations when handsets are carried in body-worn accessories. The body-worn accessory procedures in FCC KDB Publication 447498 D01 v05r02 should be used to test for body-worn accessory SAR compliance, without a headset connected to it. This enables the test results for such configuration to be compatible with that required for hotspot mode when the body-worn accessory test separation distance is greater than or equal to that required for hotspot mode, when applicable. When the reported SAR for a body-worn accessory, measured without a headset connected to the handset, is > 1.2 W/kg, the highest reported SAR configuration for that wireless mode and frequency band should be repeated for that body-worn accessory with a headset attached to the handset.

Accessories for Body-worn operation configurations are divided into two categories: those that do not contain metallic components and those that do contain metallic components. When multiple accessories that do not contain metallic components are supplied with the device, the device is tested with only the accessory that dictates the closest spacing to the body. Then multiple accessories that contain metallic components are tested with the device with each accessory. If multiple accessories share an identical metallic component (i.e. the same metallic belt-clip used with different holsters with no other metallic components) only the accessory that dictates the closest spacing to the body is tested.

Body-worn accessories may not always be supplied or available as options for some devices intended to be authorized for body-worn use. In this case, a test configuration with a separation distance between the back of the device and the flat phantom is used. Test position spacing was documented. Transmitters that are designed to operate in front of a person's face, as in push-to-talk configurations, are tested for SAR compliance with the front of the device positioned to face the flat phantom in head fluid. For devices that are carried next to the body such as a shoulder, waist or chest-worn transmitters, SAR compliance is tested with the accessories, including headsets and microphones, attached to the device and positioned against a flat phantom in a normal use configuration.

4.4. SAR Measurement Conditions for UMTS

4.4.1. Output Power Verification

Maximum output power is measured on the High, Middle and Low channels for each applicable transmission band according to the general descriptions in section 5.2 of 3GPP TS 34.121, using the appropriate RMC or AMR with TPC (transmit power control) set to all “1s”.

Maximum output power is verified on the High, Middle and Low channels according to the general descriptions in section 5.2 of 3GPP TS 34.121 (release 5), using the appropriate RMC with TPC (transmit power control) set to all “1s” or applying the required inner loop power control procedures to maintain maximum output power while HSUPA is active. Results for all applicable physical channel configurations (DPCCH, DPDCHn and spreading codes, HS-DPCCH etc) are tabulated in this test report. All configurations that are not supported by the DUT or cannot be measured due to technical or equipment limitations are identified.

4.4.2. Body SAR Measurements

SAR for body exposure configurations is measured using the 12.2 kbps RMC with the TPC bits all “1s”.

4.4.3. SAR Measurements for Devices with Rel 5 HSDPA

Body SAR for HSDPA is not required for handsets with HSDPA capabilities when the maximum average output power of each RF channel with HSDPA active is less than 0.25 dB higher than that measured without HSDPA using 12.2 kbps RMC and the maximum SAR for 12.2 kbps RMC is $\leq 75\%$ of the SAR limit. Otherwise, SAR is measured for HSDPA, using an FRC with H-Set 1 in Sub-test 1 and a 12.2 kbps RMC configured in Test Loop Mode 1, using the highest body SAR configuration measured in 12.2 kbps RMC without HSDPA, on the maximum output channel with the body exposure configuration that resulted in the highest SAR in 12.2 kbps RMC mode for that RF channel.

The H-set used in FRC for HSDPA should be configured according to the UE category of a test device. The number of HS-DSCH/HSPDSCHs, HARQ processes, minimum inter-TTI interval, transport block sizes and RV coding sequence are defined by the applicable H-set. To maintain a consistent test configuration and stable transmission conditions, QPSK is used in the FRC for SAR testing. HS-DPCCH should be configured with a CQI feedback cycle of 2 ms to maintain a constant rate of active CQI slots. DPCCH and DPDCH gain factors of $\beta_c=9$ and $\beta_d=15$, and power offset parameters of $\Delta_{ACK}=5$ and $\Delta_{CQI}=2$ is used. The CQI value is determined by the UE category, transport block size, number of HS-PDSCHs and modulation used in the FRC.

5. SAR Exposure Limits

SAR assessments have been made in line with the requirements of IEEE-1528, FCC Supplement C, and comply with ANSI/IEEE C95.1-1992 “Uncontrolled Environments” limits. These limits apply to a location which is deemed as “Uncontrolled Environment” which can be described as a situation where the general public may be exposed to an RF source with no prior knowledge or control over their exposure.

Limits for General Population/Uncontrolled Exposure (W/kg)

| Type Exposure | Uncontrolled Environment Limit |
|--|--------------------------------|
| Spatial Peak SAR (1g cube tissue for brain or body) | 1.60 W/kg |
| Spatial Average SAR (whole body) | 0.08 W/kg |
| Spatial Peak SAR (10g for hands, feet, ankles and wrist) | 4.00 W/kg |

6. Test Equipment List

| Instrument | Manufacturer | Model No. | Serial No. | Cali. Due Date |
|--------------------------------------|--------------|---------------|-----------------|----------------|
| Stäubli Robot TX60L | Stäubli | TX60L | F10/5C90A1/A/01 | N/A |
| Controller | Stäubli | SP1 | S-0034 | N/A |
| Dipole Validation Kits | Speag | D835V2 | 4d094 | 2016.02.27 |
| Dipole Validation Kits | Speag | D1900V2 | 5d121 | 2016.02.27 |
| SAM Twin Phantom | Speag | SAM | TP-1561/1562 | N/A |
| Device Holder | Speag | SD 000 H01 HA | N/A | N/A |
| Data Acquisition Electronic | Speag | DAE4 | 1220 | 2015.01.22 |
| E-Field Probe | Speag | EX3DV4 | 3710 | 2015.03.04 |
| SAR Software | Speag | DASY5 | V5.2 Build 162 | N/A |
| Power Amplifier | Mini-Circuit | ZVA-183-S+ | N657400950 | N/A |
| Directional Coupler | Agilent | 778D | 20160 | N/A |
| Universal Radio Communication Tester | R&S | CMU 200 | 117088 | 2015.03.28 |
| Vector Network | Agilent | E5071C | MY48367267 | 2015.03.28 |
| Signal Generator | Agilent | E4438C | MY49070163 | 2015.03.28 |
| Power Meter | Anritsu | ML2495A | 0905006 | 2014.11.01 |
| Wide Bandwidth Sensor | Anritsu | MA2411B | 0846014 | 2014.11.01 |

7. Measurement Uncertainty

| DASY5 Uncertainty | | | | | | | | |
|--|------------------|----------------|------------|------------|-------------|------------------|-------------------|--------------------------|
| Measurement uncertainty for 300 MHz to 3 GHz averaged over 1 gram / 10 gram. | | | | | | | | |
| Error Description | Uncert. value | Prob. Dist. | Div. | (ci) 1g | (ci) 10g | Std.Unc. (1g) | Std. nc. (10g) | (vi) V _{eff} |
| Measurement System | | | | | | | | |
| Probe Calibration | ±6.0% | N | 1 | 1 | 1 | ±6.0% | ±6.0% | ∞ |
| Axial Isotropy | ±4.7% | R | $\sqrt{3}$ | 0.7 | 0.7 | ±1.9% | ±1.9% | ∞ |
| Hemispherical Isotropy | ±9.6% | R | $\sqrt{3}$ | 0.7 | 0.7 | ±3.9% | ±3.9% | ∞ |
| Boundary Effects | ±1.0% | R | $\sqrt{3}$ | 1 | 1 | ±0.6% | ±0.6% | ∞ |
| Linearity | ±4.7% | R | $\sqrt{3}$ | 1 | 1 | ±2.7% | ±2.7% | ∞ |
| System Detection Limits | ±1.0% | R | $\sqrt{3}$ | 1 | 1 | ±0.6% | ±0.6% | ∞ |
| Readout Electronics | ±0.3% | N | 1 | 1 | 1 | ±0.3% | ±0.3% | ∞ |
| Response Time | ±0.8% | R | $\sqrt{3}$ | 1 | 1 | ±0.5% | ±0.5% | ∞ |
| Integration Time | ±2.6% | R | $\sqrt{3}$ | 1 | 1 | ±1.5% | ±1.5% | ∞ |
| RF Ambient Noise | ±3.0% | R | $\sqrt{3}$ | 1 | 1 | ±1.7% | ±1.7% | ∞ |
| RF Ambient Reflections | ±3.0% | R | $\sqrt{3}$ | 1 | 1 | ±1.7% | ±1.7% | ∞ |
| Probe Positioner | ±0.4% | R | $\sqrt{3}$ | 1 | 1 | ±0.2% | ±0.2% | ∞ |
| Probe Positioning | ±2.9% | R | $\sqrt{3}$ | 1 | 1 | ±1.7% | ±1.7% | ∞ |
| Max. SAR Eval. | ±1.0% | R | $\sqrt{3}$ | 1 | 1 | ±0.6% | ±0.6% | ∞ |
| Test Sample Related | | | | | | | | |
| Device Positioning | ±2.9% | N | 1 | 1 | 1 | ±2.9% | ±2.9% | 145 |
| Device Holder | ±3.6% | N | 1 | 1 | 1 | ±3.6% | ±3.6% | 5 |
| Power Drift | ±5.0% | R | $\sqrt{3}$ | 1 | 1 | ±2.9% | ±2.9% | ∞ |
| Phantom and Setup | | | | | | | | |
| Phantom Uncertainty | ±4.0% | R | $\sqrt{3}$ | 1 | 1 | ±2.3% | ±2.3% | ∞ |
| Liquid Conductivity (target) | ±5.0% | R | $\sqrt{3}$ | 0.64 | 0.43 | ±1.8% | ±1.2% | ∞ |
| Liquid Conductivity (meas.) | ±2.5% | N | 1 | 0.64 | 0.43 | ±1.6% | ±1.1% | ∞ |
| Liquid Permittivity (target) | ±5.0% | R | $\sqrt{3}$ | 0.6 | 0.49 | ±1.7% | ±1.4% | ∞ |
| Liquid Permittivity (meas.) | ±2.5% | N | 1 | 0.6 | 0.49 | ±1.5% | ±1.2% | ∞ |
| Combined Std. Uncertainty | | | | | | ±11.0% | ±10.8% | 387 |
| Expanded STD Uncertainty | | | | | | ±22.0% | ±21.5% | |

8. Conducted Power Measurement

| Mode | Frequency (MHz) | Avg. Burst Power (dBm) | Duty Cycle Factor (dB) | Frame Power (dBm) | Max. Power (dBm) | Scaling Factor |
|--------------------|-----------------|------------------------|------------------------|-------------------|------------------|----------------|
| Max. Power <SIM 1> | | | | | | |
| GSM850 | 824.2 | 31.17 | -9 | 22.17 | 31.5 | 1.079 |
| | 836.4 | 31.11 | -9 | 22.11 | 31.5 | 1.094 |
| | 848.8 | 31.25 | -9 | 22.25 | 31.5 | 1.059 |
| GPRS850(1 Slot) | 824.2 | 31.15 | -9 | 22.15 | 31.5 | 1.084 |
| | 836.4 | 30.98 | -9 | 21.98 | 31.5 | 1.127 |
| | 848.8 | 31.24 | -9 | 22.24 | 31.5 | 1.062 |
| GPRS850(2 Slot) | 824.2 | 28.57 | -6 | 22.57 | 29.0 | 1.104 |
| | 836.4 | 28.42 | -6 | 22.42 | 29.0 | 1.143 |
| | 848.8 | 28.68 | -6 | 22.68 | 29.0 | 1.076 |
| GPRS850(3 Slot) | 824.2 | 27.51 | -4.25 | 23.26 | 28.0 | 1.119 |
| | 836.4 | 27.35 | -4.25 | 23.10 | 28.0 | 1.161 |
| | 848.8 | 27.58 | -4.25 | 23.33 | 28.0 | 1.102 |
| GPRS850(4 Slot) | 824.2 | 29.44 | -3 | 26.44 | 30.0 | 1.138 |
| | 836.4 | 29.24 | -3 | 26.24 | 30.0 | 1.191 |
| | 848.8 | 29.51 | -3 | 26.51 | 30.0 | 1.119 |
| EDGE850(1 slot) | 824.2 | 25.50 | -9 | 16.50 | 26.0 | 1.122 |
| | 836.4 | 25.39 | -9 | 16.39 | 26.0 | 1.151 |
| | 848.8 | 25.46 | -9 | 16.46 | 26.0 | 1.132 |
| EDGE850(2 slot) | 824.2 | 24.74 | -6 | 18.74 | 25.0 | 1.062 |
| | 836.4 | 24.58 | -6 | 18.58 | 25.0 | 1.102 |
| | 848.8 | 24.80 | -6 | 18.80 | 25.0 | 1.047 |
| EDGE850(3 slot) | 824.2 | 23.81 | -4.25 | 19.56 | 24.0 | 1.045 |
| | 836.4 | 23.47 | -4.25 | 19.22 | 24.0 | 1.130 |
| | 848.8 | 23.83 | -4.25 | 19.58 | 24.0 | 1.040 |
| EDGE850(4 slot) | 824.2 | 22.78 | -3 | 19.78 | 23.0 | 1.052 |
| | 836.4 | 22.56 | -3 | 19.56 | 23.0 | 1.107 |
| | 848.8 | 22.79 | -3 | 19.79 | 23.0 | 1.050 |
| PCS1900 | 1850.2 | 27.49 | -9 | 18.49 | 28.6 | 1.291 |
| | 1880.0 | 28.23 | -9 | 19.23 | 28.6 | 1.089 |
| | 1909.8 | 28.57 | -9 | 19.57 | 28.6 | 1.007 |
| GPRS1900(1 Slot) | 1850.2 | 27.58 | -9 | 18.58 | 28.6 | 1.265 |
| | 1880.0 | 28.21 | -9 | 19.21 | 28.6 | 1.094 |
| | 1909.8 | 28.55 | -9 | 19.55 | 28.6 | 1.012 |

| | | | | | | |
|--------------------|--------|-------|-------|-------|------|-------|
| GPRS1900(2 Slot) | 1850.2 | 25.93 | -6 | 19.93 | 27.1 | 1.309 |
| | 1880.0 | 26.72 | -6 | 20.72 | 27.1 | 1.091 |
| | 1909.8 | 27.08 | -6 | 21.08 | 27.1 | 1.005 |
| GPRS1900(3 Slot) | 1850.2 | 23.88 | -4.25 | 19.63 | 25.1 | 1.324 |
| | 1880.0 | 24.67 | -4.25 | 20.42 | 25.1 | 1.104 |
| | 1909.8 | 25.00 | -4.25 | 20.75 | 25.1 | 1.023 |
| GPRS1900(4 Slot) | 1850.2 | 25.83 | -3 | 22.83 | 27.0 | 1.309 |
| | 1880.0 | 26.48 | -3 | 23.48 | 27.0 | 1.127 |
| | 1909.8 | 26.82 | -3 | 23.82 | 27.0 | 1.042 |
| EGPRS1900(1 Slot) | 1850.2 | 23.21 | -9 | 14.21 | 24.2 | 1.256 |
| | 1880.0 | 24.00 | -9 | 15.00 | 24.2 | 1.047 |
| | 1909.8 | 24.19 | -9 | 15.19 | 24.2 | 1.002 |
| EGPRS1900(2 Slot) | 1850.2 | 22.99 | -6 | 16.99 | 24.2 | 1.321 |
| | 1880.0 | 23.81 | -6 | 17.81 | 24.2 | 1.094 |
| | 1909.8 | 24.14 | -6 | 18.14 | 24.2 | 1.014 |
| EGPRS1900(3 Slot) | 1850.2 | 22.01 | -4.25 | 17.76 | 23.1 | 1.285 |
| | 1880.0 | 22.73 | -4.25 | 18.48 | 23.1 | 1.089 |
| | 1909.8 | 23.03 | -4.25 | 18.78 | 23.1 | 1.016 |
| EGPRS1900(4 Slot) | 1850.2 | 21.01 | -3 | 18.01 | 22.1 | 1.285 |
| | 1880.0 | 21.77 | -3 | 18.77 | 22.1 | 1.079 |
| | 1909.8 | 22.00 | -3 | 19.00 | 22.1 | 1.023 |
| Max. Power <SIM 2> | | | | | | |
| GSM850 | 836.4 | 31.11 | -9 | 22.11 | 31.5 | 1.094 |
| PCS1900 | 1880.0 | 28.23 | -9 | 19.23 | 28.6 | 1.089 |

Note 1: Scaling Factor = Max. Power(mW) / Avg. Burst Power(mW)

2: This device operates using the following maximum and nominal output power specifications. SAR values were scaled to the maximum allowed power to determine compliance per KDB Publication 447498 D01v05r02.

3: Both burst-averaged and calculated frame-averaged powers are included. Frame-averaged powers were calculated from the measured burst-averaged power by converting the slot powers into linear units and calculating the energy over 8 timeslots.

4: GPRS(GMSK) output powers were measured with coding scheme setting of 1 (CS1) on the base station simulator. CS1 was configured to measure GPRS output power measurements and SAR to ensure GMSK modulation in the signal. Our Investigation has shown that CS1 - CS4 settings do not have any impact on the output levels or modulation in the GPRS modes.

5: EDGE (8-PSK) output powers were measured with MCS7 on the base station simulator. MCS7 coding scheme was used to measure the output powers for EDGE since investigation has shown that choosing MCS7 coding scheme will ensure 8-PSK modulation. It has been shown that MCS levels that

produce 8PSK modulation do not have an impact on output power.

WCDMA/HSDPA/HSUPA/HSPA+

| Mode | 3GPP Subtest | Band II (1900MHz) Channel | | | Band V (850MHz) Channel | | | MPR |
|------------|--------------|------------------------------|-------|-------|----------------------------|-------|-------|-----|
| | | Conducted Power (dBm) | | | | | | |
| | | 9262 | 9400 | 9538 | 4132 | 4182 | 4233 | |
| WCDMA R99 | 1 | 20.77 | 20.67 | 20.52 | 21.29 | 21.21 | 20.99 | N/A |
| Rel5 HSDPA | 1 | 19.01 | 20.53 | 20.49 | 21.08 | 21.15 | 20.98 | 0 |
| | 2 | 18.85 | 18.99 | 18.93 | 20.32 | 20.56 | 20.20 | 0 |
| | 3 | 18.38 | 18.59 | 18.43 | 20.31 | 20.43 | 20.23 | 0.5 |
| | 4 | 18.34 | 18.55 | 18.42 | 19.91 | 20.01 | 19.87 | 0.5 |

Note: UMTS SAR was tested under RMC 12.2 kbps with HSDPA Inactive per KDB Publication 941225 D01v02. HSDPA SAR was not required since the average output power of the HSDPA subtests was not more than 0.25 dB higher than the RMC level and SAR was less than 1.2 W/kg.

| Mode | Band II (1900MHz) Channel | Normal Power (dBm) | Max. Power (dBm) | Scaling Factor |
|-----------|------------------------------|-----------------------|------------------|----------------|
| WCDMA R99 | 9262 | 20.77 | 21.0 | 1.054 |
| | 9400 | 20.67 | 21.0 | 1.079 |
| | 9538 | 20.52 | 21.0 | 1.117 |
| Mode | Band V (850MHz) Channel | Normal Power (dBm) | Max. Power (dBm) | Scaling Factor |
| WCDMA R99 | 4132 | 21.29 | 21.5 | 1.050 |
| | 4182 | 21.21 | 21.5 | 1.069 |
| | 4233 | 20.99 | 21.5 | 1.125 |

9. Test Results

9.1. SAR Test Results Summary

| | | | | | | | | | |
|--|---------------------|-----------|-------|-------------------------|---------------------------|------------------|-------------------|----------------------------|-----------------|
| SAR MEASUREMENT | | | | | | | | | |
| Ambient Temperature (°C) : 21.5 ± 2 | | | | | Relative Humidity (%): 52 | | | | |
| Liquid Temperature (°C) : 21.0 ± 2 | | | | | Depth of Liquid (cm):>15 | | | | |
| Product: RhythmStar | | | | | | | | | |
| Body-worn Accessory SAR Configurations | | | | | | | | | |
| Test Mode: GSM850 | | | | | | | | | |
| Test Position Body (15mm gap) | Antenna Position | Frequency | | Frame Power (dBm) | Power Drift (<±0.2) | SAR 1g (W/kg) | Scaling Factor | Scaled SAR 1g (W/kg) | Limit (W/kg) |
| | | Channel | MHz | | | | | | |
| Body-worn | Fixed | 128 | 824.2 | 22.17 | -- | -- | 1.079 | -- | 1.6 |
| Body-worn | Fixed | 189 | 836.4 | 22.11 | -0.01 | 0.350 | 1.094 | 0.383 | 1.6 |
| Body-worn | Fixed | 251 | 848.8 | 22.25 | -- | -- | 1.059 | -- | 1.6 |
| Test Mode: GPRS850-2slot | | | | | | | | | |
| Body-worn | Fixed | 128 | 824.2 | 22.57 | -- | -- | 1.104 | -- | 1.6 |
| Body-worn | Fixed | 189 | 836.4 | 22.42 | -0.04 | 0.421 | 1.143 | 0.481 | 1.6 |
| Body-worn | Fixed | 251 | 848.8 | 22.68 | -- | -- | 1.076 | -- | 1.6 |
| Test Mode: GPRS850-3slot | | | | | | | | | |
| Body-worn | Fixed | 128 | 824.2 | 23.26 | -- | -- | 1.119 | -- | 1.6 |
| Body-worn | Fixed | 189 | 836.4 | 23.10 | 0.11 | 0.445 | 1.161 | 0.517 | 1.6 |
| Body-worn | Fixed | 251 | 848.8 | 23.33 | -- | -- | 1.102 | -- | 1.6 |
| Test Mode: GPRS850-4slot | | | | | | | | | |
| Body-worn | Fixed | 128 | 824.2 | 26.44 | -0.10 | 0.856 | 1.138 | 0.974 | 1.6 |
| Body-worn | Fixed | 189 | 836.4 | 26.24 | -0.15 | 0.904 | 1.191 | 1.08 | 1.6 |
| Body-worn | Fixed | 251 | 848.8 | 26.51 | 0.05 | 0.993 | 1.119 | 1.11 | 1.6 |
| Body-front | Fixed | 128 | 824.2 | 26.44 | -0.18 | 1.04 | 1.138 | 1.18 | 1.6 |
| Body-front | Fixed | 189 | 836.4 | 26.24 | -0.04 | 1.08 | 1.191 | 1.29 | 1.6 |
| Body-front | Fixed | 251 | 848.8 | 26.51 | 0.04 | 1.20 | 1.119 | 1.34 | 1.6 |
| Body-front* | Fixed | 251 | 848.8 | 26.51 | 0.02 | 1.21 | 1.191 | 1.44 | 1.6 |
| Body-front(with ECG Cable) | Fixed | 251 | 848.8 | 26.51 | -0.04 | 1.08 | 1.191 | 1.29 | 1.6 |
| Note 1: when the 1-g SAR is ≤ 0.8 W/kg, testing for low and high channel is optional, refer to KDB 447498. | | | | | | | | | |
| 2: * - repeated at the highest SAR measurement according to the FCC KDB 865664 | | | | | | | | | |

| | | | | | | | | | |
|--|---------------------|-----------|--------|-------------------------|---------------------------|------------------|-------------------|----------------------------|-----------------|
| SAR MEASUREMENT | | | | | | | | | |
| Ambient Temperature (°C) : 21.5 ± 2 | | | | | Relative Humidity (%): 52 | | | | |
| Liquid Temperature (°C) : 21.0 ± 2 | | | | | Depth of Liquid (cm):>15 | | | | |
| Product: RhythmStar | | | | | | | | | |
| Body-worn Accessory SAR Configurations | | | | | | | | | |
| Test Mode: PCS1900 | | | | | | | | | |
| Test Position Body (15mm gap) | Antenna Position | Frequency | | Frame Power (dBm) | Power Drift (≤±0.2) | SAR 1g (W/kg) | Scaling Factor | Scaled SAR 1g (W/kg) | Limit (W/kg) |
| | | Channel | MHz | | | | | | |
| Body-worn | Fixed | 512 | 1850.2 | 18.49 | -- | -- | 1.291 | -- | 1.6 |
| Body-worn | Fixed | 661 | 1880.0 | 19.23 | 0.09 | 0.346 | 1.089 | 0.377 | 1.6 |
| Body-worn | Fixed | 810 | 1909.8 | 19.57 | -- | -- | 1.007 | -- | 1.6 |
| Test Mode: GPRS1900-2slot | | | | | | | | | |
| Body-worn | Fixed | 512 | 1850.2 | 19.93 | -- | -- | 1.309 | -- | 1.6 |
| Body-worn | Fixed | 661 | 1880.0 | 20.72 | 0.12 | 0.468 | 1.091 | 0.511 | 1.6 |
| Body-worn | Fixed | 810 | 1909.8 | 21.08 | -- | -- | 1.005 | -- | 1.6 |
| Test Mode: GPRS1900-3slot | | | | | | | | | |
| Body-worn | Fixed | 512 | 1850.2 | 19.63 | -- | -- | 1.324 | -- | 1.6 |
| Body-worn | Fixed | 661 | 1880.0 | 20.42 | 0.05 | 0.434 | 1.104 | 0.479 | 1.6 |
| Body-worn | Fixed | 810 | 1909.8 | 20.75 | -- | -- | 1.023 | -- | 1.6 |
| Test Mode: GPRS1900-4slot | | | | | | | | | |
| Body-worn | Fixed | 512 | 1850.2 | 22.83 | 0.11 | 0.841 | 1.309 | 1.10 | 1.6 |
| Body-worn | Fixed | 661 | 1880.0 | 23.48 | -0.14 | 0.890 | 1.127 | 1.0 | 1.6 |
| Body-worn* | Fixed | 661 | 1880.0 | 23.48 | -0.07 | 0.849 | 1.127 | 0.957 | 1.6 |
| Body-worn | Fixed | 810 | 1909.8 | 23.82 | -0.10 | 0.652 | 1.042 | 0.679 | 1.6 |
| Body-front | Fixed | 661 | 1880.0 | 23.48 | -0.06 | 0.673 | 1.127 | 0.758 | 1.6 |
| Note: when the 1-g SAR is ≤ 0.8 W/kg, testing for low and high channel is optional, refer to KDB 447498. | | | | | | | | | |
| 2: * - repeated at the highest SAR measurement according to the FCC KDB 865664 | | | | | | | | | |

| SAR MEASUREMENT | | | | | | | | | |
|--|---------------------|-----------|--------|-----------------------------|---------------------------|---------------------|-------------------|----------------------------|-----------------|
| Ambient Temperature (°C): 21.5 ± 2 | | | | | Relative Humidity (%): 52 | | | | |
| Liquid Temperature (°C): 21.0 ± 2 | | | | | Depth of Liquid (cm):>15 | | | | |
| Product: RhythmStar | | | | | | | | | |
| Body-worn Accessory SAR Configurations | | | | | | | | | |
| Test Mode: WCDMA Band II | | | | | | | | | |
| Test Position Body (15mm gap) | Antenna Position | Frequency | | Conducted Power (dBm) | Power Drift (<±0.2) | SAR 1g (W/kg) | Scaling Factor | Scaled SAR 1g (W/kg) | Limit (W/kg) |
| | | Channel | MHz | | | | | | |
| Body-worn | Fixed | 9262 | 1852.4 | 20.77 | -- | -- | 1.054 | -- | 1.6 |
| Body-worn | Fixed | 9400 | 1880.0 | 20.67 | 0.11 | 0.441 | 1.079 | 0.476 | 1.6 |
| Body-worn | Fixed | 9538 | 1907.6 | 20.52 | -- | -- | 1.117 | -- | 1.6 |
| Body-front | Fixed | 9400 | 1880.0 | 20.67 | -0.19 | 0.364 | 1.079 | 0.393 | 1.6 |
| Note: when the 1-g SAR is ≤ 0.8 W/kg, testing for low and high channel is optional, refer to KDB 447498. | | | | | | | | | |

| SAR MEASUREMENT | | | | | | | | | |
|--|---------------------|-----------|-------|-----------------------------|---------------------------|---------------------|-------------------|----------------------------|-----------------|
| Ambient Temperature (°C): 21.5 ± 2 | | | | | Relative Humidity (%): 52 | | | | |
| Liquid Temperature (°C): 21.0 ± 2 | | | | | Depth of Liquid (cm):>15 | | | | |
| Product: RhythmStar | | | | | | | | | |
| Body-worn Accessory SAR Configurations | | | | | | | | | |
| Test Mode: WCDMA Band V | | | | | | | | | |
| Test Position Body (15mm gap) | Antenna Position | Frequency | | Conducted Power (dBm) | Power Drift (<±0.2) | SAR 1g (W/kg) | Scaling Factor | Scaled SAR 1g (W/kg) | Limit (W/kg) |
| | | Channel | MHz | | | | | | |
| Body-worn | Fixed | 4132 | 826.4 | 21.29 | -- | -- | 1.050 | -- | 1.6 |
| Body-worn | Fixed | 4182 | 836.4 | 21.21 | 0.01 | 0.314 | 1.069 | 0.336 | 1.6 |
| Body-worn | Fixed | 4233 | 846.6 | 20.99 | -- | -- | 1.125 | -- | 1.6 |
| Body-front | Fixed | 4182 | 836.4 | 21.21 | -0.01 | 0.394 | 1.069 | 0.421 | 1.6 |
| Note: when the 1-g SAR is ≤ 0.8 W/kg, testing for low and high channel is optional, refer to KDB 447498. | | | | | | | | | |

9.2. SAR Test Notes

9.2.1. Test position and configuration

Voice mode is not supported by the device, so only body SAR was performed with the device. Device was tested using a fixed spacing for body-worn accessory testing. A separation distance of 15mm was considered because the manufacturer has determined that there will be body-worn accessories available in the marketplace for users to support this separation distance.

9.2.2. Simultaneous Transmission Procedures

There is no simultaneous in the device.

Appendix A. SAR System Validation Data

Date/Time: 10-04-2014

Test Laboratory: QuieTek Lab

System Check Body 835MHz

DUT: Dipole 835 MHz D835V2; Type: D835V2

Communication System: CW; Communication System Band: D835 (835.0 MHz); Duty Cycle: 1:1;

Frequency: 835 MHz; Medium parameters used: $f = 835$ MHz; $\sigma = 0.99$ S/m; $\epsilon_r = 53.72$; $\rho = 1000$ kg/m³ ;

Phantom section: Flat Section ; Input Power=250mW

Ambient temperature (°C): 21.5, Liquid temperature (°C): 21.0

DASY5 Configuration:

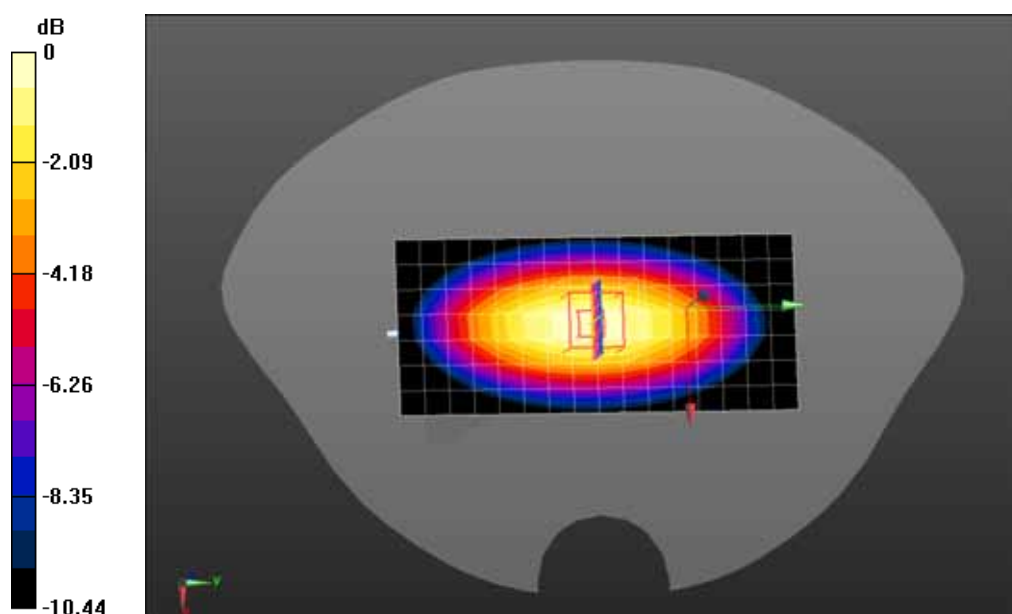
- Probe: EX3DV4 - SN3710; ConvF(9.22, 9.22, 9.22); Calibrated: 04/03/2014;
- Sensor-Surface: 4mm (Mechanical Surface Detection)
- Electronics: DAE4 Sn1220; Calibrated: 22/01/2014
- Phantom: SAM1; Type: SAM; Serial: TP1561
- Measurement SW: DASY52, Version 52.8 (7); SEMCAD X Version 14.6.10 (7164)

Configuration/System Check Body 835MHz/Area Scan (8x17x1): Measurement grid: dx=10mm, dy=10mm, Maximum value of SAR (measured) = 2.53 W/kg

Configuration/System Check Body 835MHz/Zoom Scan (7x7x7)/Cube 0: Measurement grid: dx=5mm, dy=5mm, dz=5mm, Reference Value = 52.328 V/m; Power Drift = 0.03 dB

Peak SAR (extrapolated) = 3.82 W/kg

SAR(1 g) = 2.53 W/kg; SAR(10 g) = 1.65 W/kg Maximum value of SAR (measured) = 2.73 W/kg



0 dB = 2.73 W/kg = 4.36 dBW/kg

Date/Time: 10-04-2014

Test Laboratory: QuieTek Lab

System Check Body 1900MHz

DUT: Dipole 1900 MHz D1900V2; Type: D1900V2

Communication System: CW; Communication System Band: D1900 (1900.0 MHz); Duty Cycle: 1:1;

Frequency: 1900 MHz; Medium parameters used: $f = 1900$ MHz; $\sigma = 1.56$ S/m; $\epsilon_r = 52.49$; $\rho = 1000$ kg/m³ ;

Phantom section: Flat Section ; Input Power=250mW

Ambient temperature (°C): 21.5, Liquid temperature (°C): 21.0

DASY5 Configuration:

- Probe: EX3DV4 - SN3710; ConvF(7.25, 7.25, 7.25); Calibrated: 04/03/2014;
- Sensor-Surface: 4mm (Mechanical Surface Detection)
- Electronics: DAE4 Sn1220; Calibrated: 22/01/2014
- Phantom: SAM1; Type: SAM; Serial: TP1561
- Measurement SW: DASY52, Version 52.8 (7); SEMCAD X Version 14.6.10 (7164)

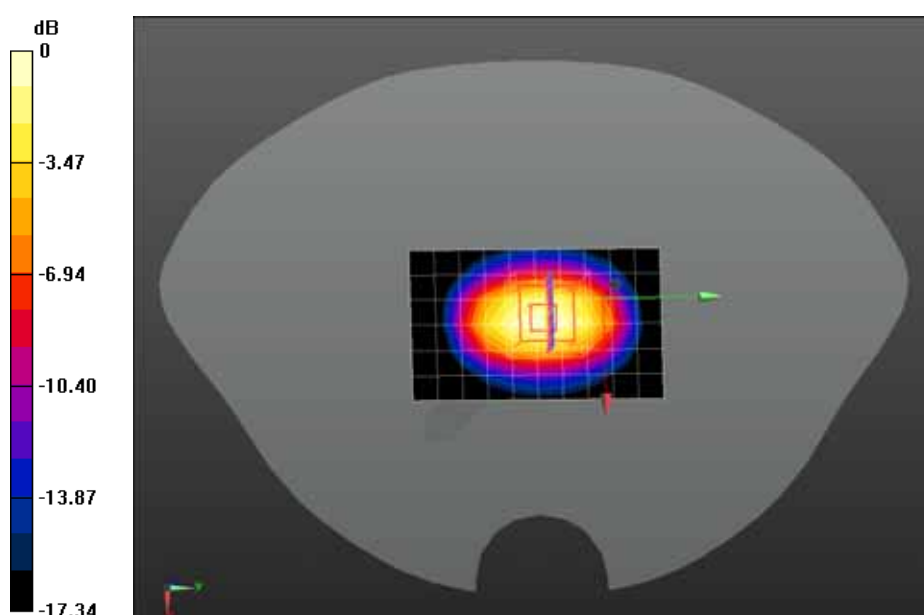
Configuration/System Check PCS1900 Body/Area Scan (7x11x1): Measurement grid: dx=10mm, dy=10mm

Maximum value of SAR (measured) = 11.0 W/kg

Configuration/System Check PCS1900 Body/Zoom Scan (7x7x7)/Cube 0: Measurement grid: dx=5mm, dy=5mm, dz=5mm, Reference Value = 84.280 V/m; Power Drift = 0.06 dB

Peak SAR (extrapolated) = 18.2 W/kg

SAR(1 g) = 9.98 W/kg; SAR(10 g) = 5.17 W/kg Maximum value of SAR (measured) = 11.3 W/kg



0 dB = 11.3 W/kg = 10.53 dBW/kg

Appendix B. SAR measurement Data

Date/Time: 10-04-2014

Test Laboratory: QuieTek Lab

GSM850 Mid Body-Back

DUT: RhythmStar; Type: RS-10002

Communication System: UID 0, Generic GSM (0); Communication System Band: GSM850; Duty Cycle: 1:8.3; Frequency: 836.4 MHz; Medium parameters used: $f = 836.4$ MHz; $\sigma = 0.99$ S/m; $\epsilon_r = 53.71$; $\rho = 1000$ kg/m³; Phantom section: Flat Section

Ambient temperature (°C): 21.5, Liquid temperature (°C): 21.0

DASY5 Configuration:

- Probe: EX3DV4 - SN3710; ConvF(9.22, 9.22, 9.22); Calibrated: 04/03/2014;
- Sensor-Surface: 4mm (Mechanical Surface Detection)
- Electronics: DAE4 Sn1220; Calibrated: 22/01/2014
- Phantom: SAM2; Type: SAM; Serial: TP1562
- Measurement SW: DASY52, Version 52.8 (7); SEMCAD X Version 14.6.10 (7164)

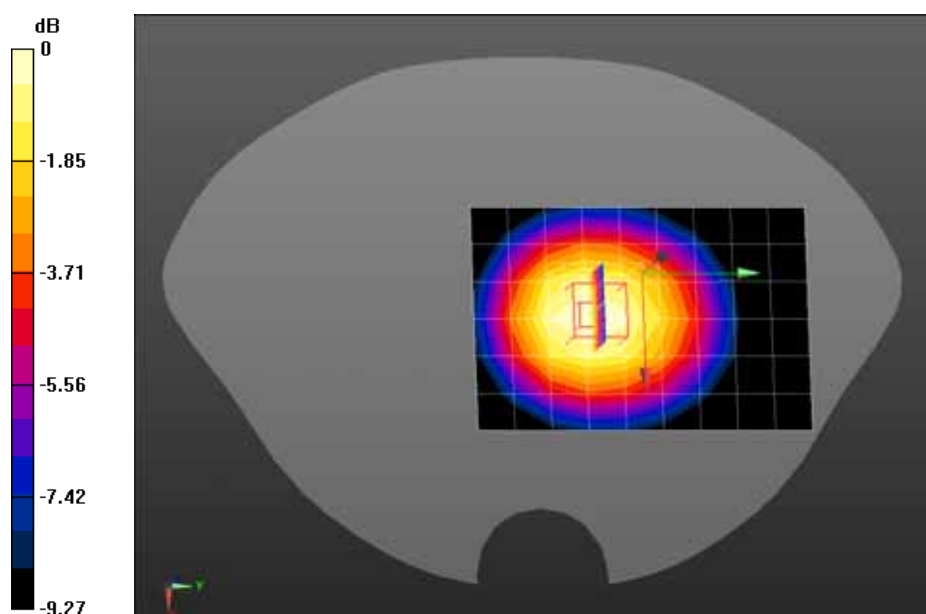
Configuration/GSM850 Mid Body-Back/Area Scan (7x10x1): Measurement grid: dx=15mm, dy=15mm

Maximum value of SAR (measured) = 0.375 W/kg

Configuration/GSM850 Mid Body-Back/Zoom Scan (5x5x7)/Cube 0: Measurement grid: dx=8mm, dy=8mm, dz=5mm, Reference Value = 16.816 V/m; Power Drift = -0.01 dB

Peak SAR (extrapolated) = 0.458 W/kg

SAR(1 g) = 0.350 W/kg; SAR(10 g) = 0.255 W/kg Maximum value of SAR (measured) = 0.369 W/kg



0 dB = 0.369 W/kg = -4.33 dBW/kg

Date/Time: 10-04-2014

Test Laboratory: QuieTek Lab

GPRS850 Mid Body-Back(2up)

DUT: RhythmStar; Type: RS-10002

Communication System: UID 0, GPRS/EGPRS-2 Slot (0); Communication System Band: GSM850; Duty Cycle: 1:4.2 ; Frequency: 836.4 MHz; Medium parameters used: $f = 836.4$ MHz; $\sigma = 0.99$ S/m; $\epsilon_r = 53.71$; $\rho = 1000$ kg/m³ ; Phantom section: Flat Section

Ambient temperature (°C): 21.5, Liquid temperature (°C): 21.0

DASY5 Configuration:

- Probe: EX3DV4 - SN3710; ConvF(9.22, 9.22, 9.22); Calibrated: 04/03/2014;
- Sensor-Surface: 4mm (Mechanical Surface Detection)
- Electronics: DAE4 Sn1220; Calibrated: 22/01/2014
- Phantom: SAM2; Type: SAM; Serial: TP1562
- Measurement SW: DASY52, Version 52.8 (7); SEMCAD X Version 14.6.10 (7164)

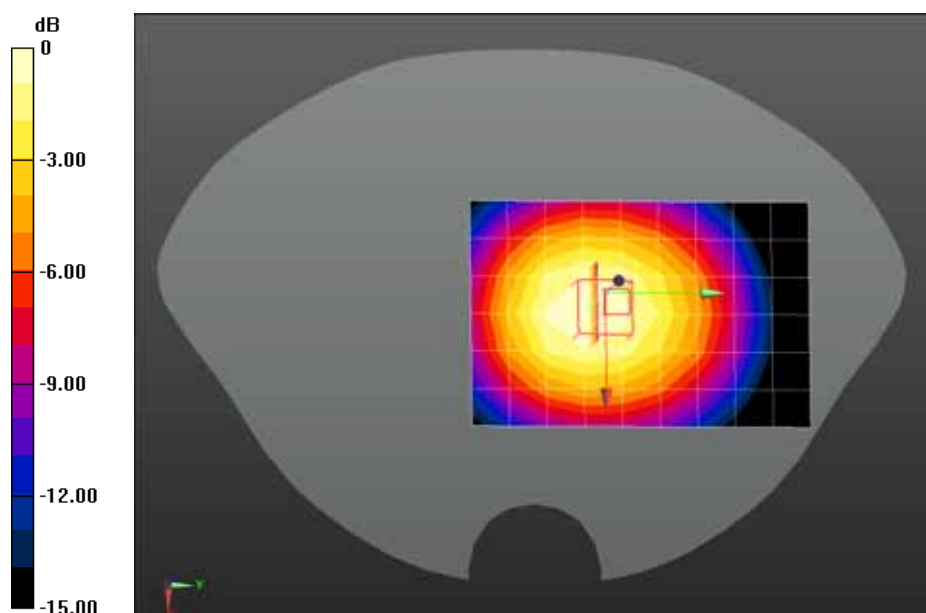
Configuration/GPRS850 Mid Body-Back/Area Scan (7x10x1): Measurement grid: dx=15mm, dy=15mm

Maximum value of SAR (measured) = 0.396 W/kg

Configuration/GPRS850 Mid Body-Back/Zoom Scan (5x5x7)/Cube 0: Measurement grid: dx=8mm, dy=8mm, dz=5mm, Reference Value = 16.938 V/m; Power Drift = -0.04 dB

Peak SAR (extrapolated) = 0.704 W/kg

SAR(1 g) = 0.421 W/kg; SAR(10 g) = 0.282 W/kg Maximum value of SAR (measured) = 0.400 W/kg



0 dB = 0.400 W/kg = -3.98 dBW/kg

Date/Time: 10-04-2014

Test Laboratory: QuieTek Lab

GPRS850 Mid Body-Back(3up)

DUT: RhythmStar; Type: RS-10002

Communication System: UID 0, GPRS/EGPRS-3 Slot (0); Communication System Band: GSM 850; Duty Cycle: 1:2.8 ; Frequency: 836.4 MHz; Medium parameters used: $f = 836.4$ MHz; $\sigma = 0.99$ S/m; $\epsilon_r = 53.71$; $\rho = 1000$ kg/m³ ; Phantom section: Flat Section

Ambient temperature (°C): 21.5, Liquid temperature (°C): 21.0

DASY5 Configuration:

- Probe: EX3DV4 - SN3710; ConvF(9.22, 9.22, 9.22); Calibrated: 04/03/2014;
- Sensor-Surface: 4mm (Mechanical Surface Detection)
- Electronics: DAE4 Sn1220; Calibrated: 22/01/2014
- Phantom: SAM2; Type: SAM; Serial: TP1562
- Measurement SW: DASY52, Version 52.8 (7); SEMCAD X Version 14.6.10 (7164)

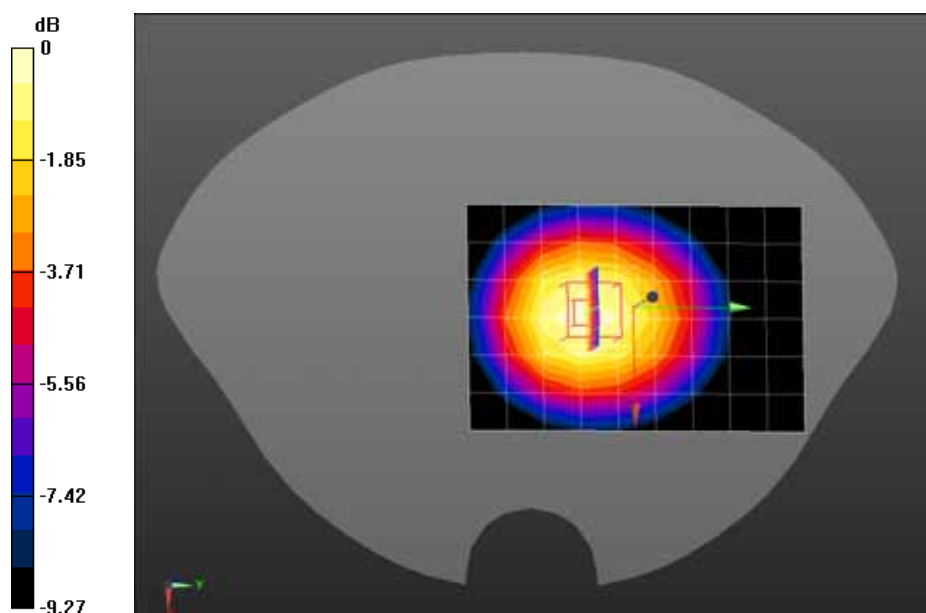
Configuration/GPRS850 Mid Body-Back/Area Scan (7x10x1): Measurement grid: dx=15mm, dy=15mm

Maximum value of SAR (measured) = 0.467 W/kg

Configuration/GPRS850 Mid Body-Back/Zoom Scan (5x5x7)/Cube 0: Measurement grid: dx=8mm, dy=8mm, dz=5mm, Reference Value = 18.323 V/m; Power Drift = 0.11 dB

Peak SAR (extrapolated) = 0.588 W/kg

SAR(1 g) = 0.445 W/kg; SAR(10 g) = 0.324 W/kg Maximum value of SAR (measured) = 0.472 W/kg



0 dB = 0.472 W/kg = -3.26 dBW/kg

Date/Time: 10-04-2014

Test Laboratory: QuieTek Lab

GPRS850 Low Body-Back(4up)

DUT: RhythmStar; Type: RS-10002

Communication System: UID 0, GPRS/EGPRS-4 Slot (0); Communication System Band: GSM 850; Duty Cycle: 1:2.1 ; Frequency: 824.2 MHz; Medium parameters used: $f = 824.2$ MHz; $\sigma = 0.98$ S/m; $\epsilon_r = 53.83$; $\rho = 1000$ kg/m³ ; Phantom section: Flat Section

Ambient temperature (°C): 21.5, Liquid temperature (°C): 21.0

DASY5 Configuration:

- Probe: EX3DV4 - SN3710; ConvF(9.22, 9.22, 9.22); Calibrated: 04/03/2014;
- Sensor-Surface: 4mm (Mechanical Surface Detection)
- Electronics: DAE4 Sn1220; Calibrated: 22/01/2014
- Phantom: SAM2; Type: SAM; Serial: TP1562
- Measurement SW: DASY52, Version 52.8 (7); SEMCAD X Version 14.6.10 (7164)

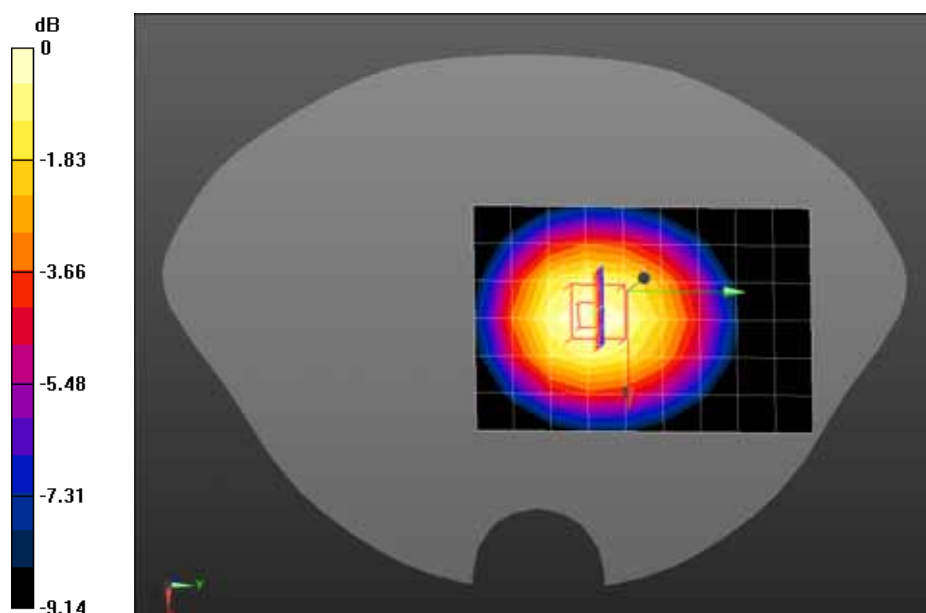
Configuration/GPRS850 Low Body-Back/Area Scan (7x10x1): Measurement grid: dx=15mm, dy=15mm

Maximum value of SAR (measured) = 0.914 W/kg

Configuration/GPRS850 Low Body-Back/Zoom Scan (5x5x7)/Cube 0: Measurement grid: dx=8mm, dy=8mm, dz=5mm, Reference Value = 26.189 V/m; Power Drift = -0.10 dB

Peak SAR (extrapolated) = 1.12 W/kg

SAR(1 g) = 0.856 W/kg; SAR(10 g) = 0.625 W/kg Maximum value of SAR (measured) = 0.901 W/kg



0 dB = 0.901 W/kg = -0.45 dBW/kg

Date/Time: 10-04-2014

Test Laboratory: QuieTek Lab

GPRS850 Mid Body-Back(4up)

DUT: RhythmStar; Type: RS-10002

Communication System: UID 0, GPRS/EGPRS-4 Slot (0); Communication System Band: GSM 850; Duty Cycle: 1:2.1 ; Frequency: 836.4 MHz; Medium parameters used: $f = 836.4$ MHz; $\sigma = 0.99$ S/m; $\epsilon_r = 53.71$; $\rho = 1000$ kg/m³ ; Phantom section: Flat Section

Ambient temperature (°C): 21.5, Liquid temperature (°C): 21.0

DASY5 Configuration:

- Probe: EX3DV4 - SN3710; ConvF(9.22, 9.22, 9.22); Calibrated: 04/03/2014;
- Sensor-Surface: 4mm (Mechanical Surface Detection)
- Electronics: DAE4 Sn1220; Calibrated: 22/01/2014
- Phantom: SAM2; Type: SAM; Serial: TP1562
- Measurement SW: DASY52, Version 52.8 (7); SEMCAD X Version 14.6.10 (7164)

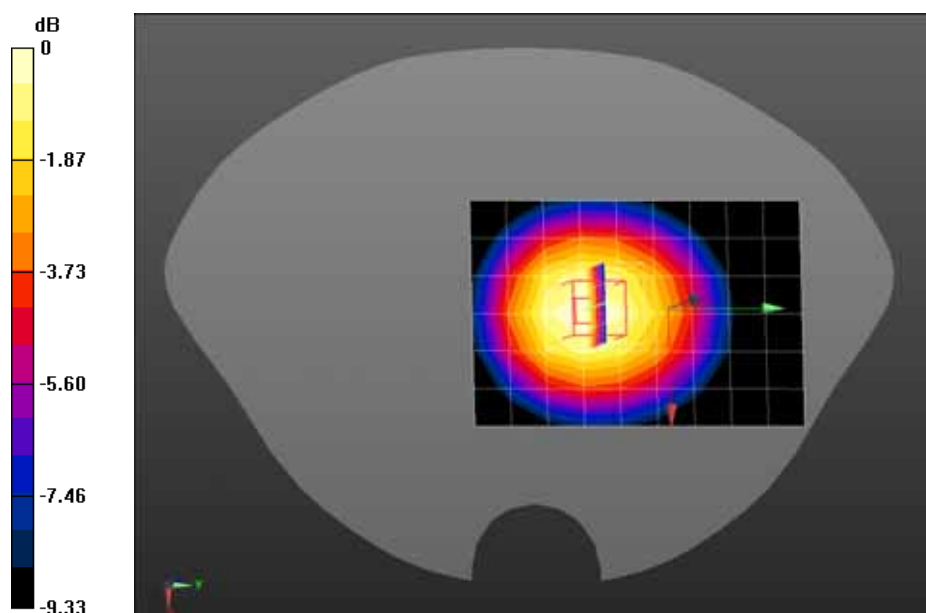
Configuration/GPRS850 Mid Body-Back/Area Scan (7x10x1): Measurement grid: dx=15mm, dy=15mm

Maximum value of SAR (measured) = 0.968 W/kg

Configuration/GPRS850 Mid Body-Back/Zoom Scan (5x5x7)/Cube 0: Measurement grid: dx=8mm, dy=8mm, dz=5mm, Reference Value = 26.742 V/m; Power Drift = -0.15 dB

Peak SAR (extrapolated) = 1.20 W/kg

SAR(1 g) = 0.904 W/kg; SAR(10 g) = 0.658 W/kg Maximum value of SAR (measured) = 0.957 W/kg



0 dB = 0.957 W/kg = -0.19 dBW/kg

Date/Time: 10-04-2014

Test Laboratory: QuieTek Lab

GPRS850 High Body-Back(4up)

DUT: RhythmStar; Type: RS-10002

Communication System: UID 0, GPRS/EGPRS-4 Slot (0); Communication System Band: GSM 850; Duty Cycle: 1:2.1 ; Frequency: 848.8 MHz; Medium parameters used: $f = 848.8$ MHz; $\sigma = 1$ S/m; $\epsilon_r = 53.58$; $\rho = 1000$ kg/m³ ; Phantom section: Flat Section

Ambient temperature (°C): 21.5, Liquid temperature (°C): 21.0

DASY5 Configuration:

- Probe: EX3DV4 - SN3710; ConvF(9.22, 9.22, 9.22); Calibrated: 04/03/2014;
- Sensor-Surface: 4mm (Mechanical Surface Detection)
- Electronics: DAE4 Sn1220; Calibrated: 22/01/2014
- Phantom: SAM2; Type: SAM; Serial: TP1562
- Measurement SW: DASY52, Version 52.8 (7); SEMCAD X Version 14.6.10 (7164)

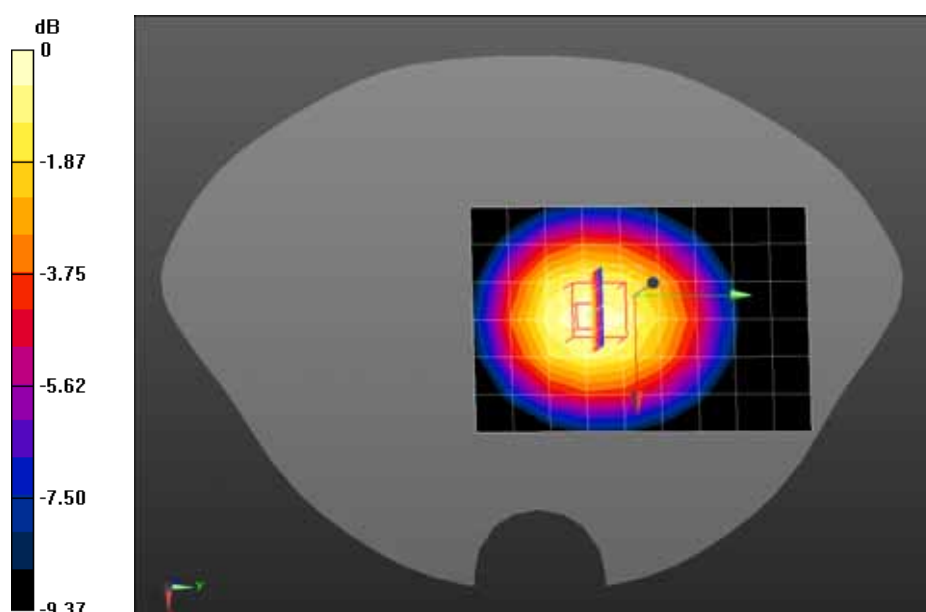
Configuration/GPRS850 High Body-Back/Area Scan (7x10x1): Measurement grid: dx=15mm, dy=15mm

Maximum value of SAR (measured) = 1.05 W/kg

Configuration/GPRS850 High Body-Back/Zoom Scan (5x5x7)/Cube 0: Measurement grid: dx=8mm, dy=8mm, dz=5mm, Reference Value = 27.198 V/m; Power Drift = 0.05 dB

Peak SAR (extrapolated) = 1.31 W/kg

SAR(1 g) = 0.993 W/kg; SAR(10 g) = 0.722 W/kg Maximum value of SAR (measured) = 1.05 W/kg



0 dB = 1.05 W/kg = 0.21 dBW/kg

Date/Time: 10-04-2014

Test Laboratory: QuieTek Lab

GPRS850 Low Body-Front(4up)

DUT: RhythmStar; Type: RS-10002

Communication System: UID 0, GPRS/EGPRS-4 Slot (0); Communication System Band: GSM 850; Duty Cycle: 1:2.1 ; Frequency: 824.2 MHz; Medium parameters used: $f = 824.2$ MHz; $\sigma = 0.98$ S/m; $\epsilon_r = 53.83$; $\rho = 1000$ kg/m³ ; Phantom section: Flat Section

Ambient temperature (°C): 21.5, Liquid temperature (°C): 21.0

DASY5 Configuration:

- Probe: EX3DV4 - SN3710; ConvF(9.22, 9.22, 9.22); Calibrated: 04/03/2014;
- Sensor-Surface: 4mm (Mechanical Surface Detection)
- Electronics: DAE4 Sn1220; Calibrated: 22/01/2014
- Phantom: SAM2; Type: SAM; Serial: TP1562
- Measurement SW: DASY52, Version 52.8 (7); SEMCAD X Version 14.6.10 (7164)

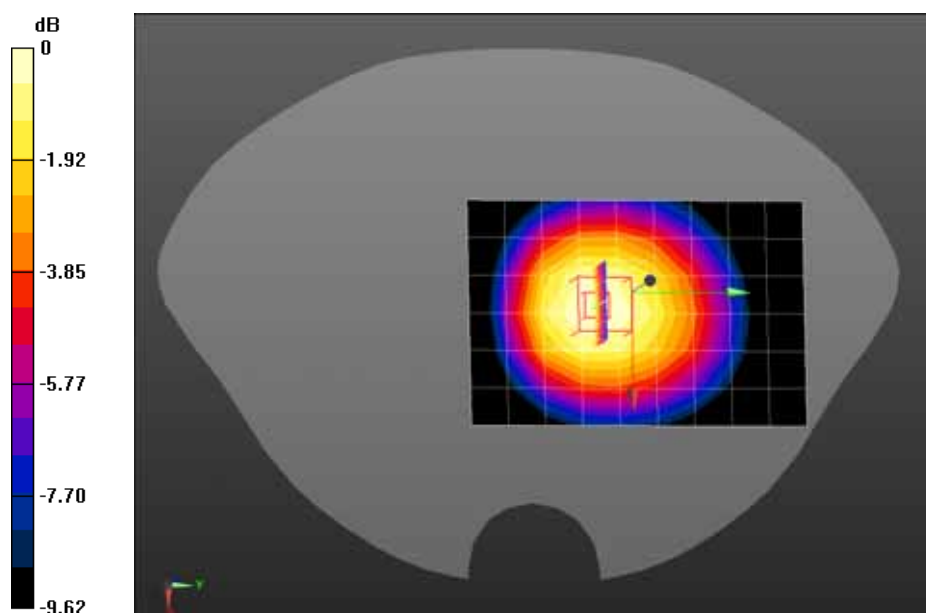
Configuration/GPRS850 Low Body-Front/Area Scan (7x10x1): Measurement grid: dx=15mm, dy=15mm

Maximum value of SAR (measured) = 1.11 W/kg

Configuration/GPRS850 Low Body-Front/Zoom Scan (5x5x7)/Cube 0: Measurement grid: dx=8mm, dy=8mm, dz=5mm, Reference Value = 25.915 V/m; Power Drift = -0.18 dB

Peak SAR (extrapolated) = 1.35 W/kg

SAR(1 g) = 1.04 W/kg; SAR(10 g) = 0.755 W/kg Maximum value of SAR (measured) = 1.09 W/kg



0 dB = 1.09 W/kg = 0.37 dBW/kg

Date/Time: 10-04-2014

Test Laboratory: QuieTek Lab

GPRS850 Mid Body-Front(4up)

DUT: RhythmStar; Type: RS-10002

Communication System: UID 0, GPRS/EGPRS-4 Slot (0); Communication System Band: GSM 850; Duty Cycle: 1:2.1 ; Frequency: 836.4 MHz; Medium parameters used: $f = 836.4$ MHz; $\sigma = 0.99$ S/m; $\epsilon_r = 53.71$; $\rho = 1000$ kg/m³ ; Phantom section: Flat Section

Ambient temperature (°C): 21.5, Liquid temperature (°C): 21.0

DASY5 Configuration:

- Probe: EX3DV4 - SN3710; ConvF(9.22, 9.22, 9.22); Calibrated: 04/03/2014;
- Sensor-Surface: 4mm (Mechanical Surface Detection)
- Electronics: DAE4 Sn1220; Calibrated: 22/01/2014
- Phantom: SAM2; Type: SAM; Serial: TP1562
- Measurement SW: DASY52, Version 52.8 (7); SEMCAD X Version 14.6.10 (7164)

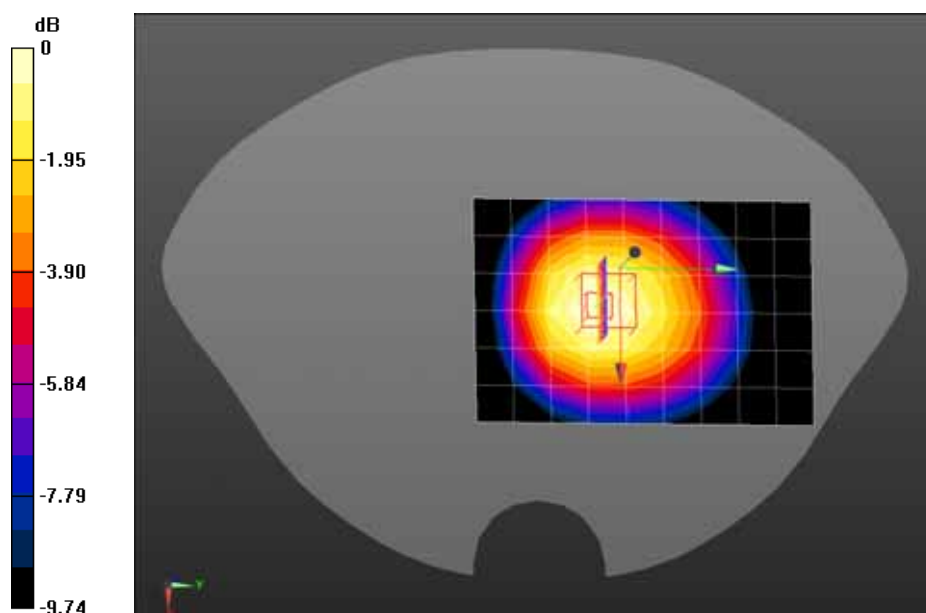
Configuration/GPRS850 Mid Body-Front/Area Scan (7x10x1): Measurement grid: dx=15mm, dy=15mm

Maximum value of SAR (measured) = 1.16 W/kg

Configuration/GPRS850 Mid Body-Front/Zoom Scan (5x5x7)/Cube 0: Measurement grid: dx=8mm, dy=8mm, dz=5mm, Reference Value = 27.028 V/m; Power Drift = -0.04 dB

Peak SAR (extrapolated) = 1.43 W/kg

SAR(1 g) = 1.08 W/kg; SAR(10 g) = 0.789 W/kg Maximum value of SAR (measured) = 1.15 W/kg



0 dB = 1.15 W/kg = 0.61 dBW/kg

Date/Time: 10-04-2014

Test Laboratory: QuieTek Lab

GPRS850 High Body-Front(4up)

DUT: RhythmStar; Type: RS-10002

Communication System: UID 0, GPRS/EGPRS-4 Slot (0); Communication System Band: GSM 850; Duty Cycle: 1:2.1 ; Frequency: 848.8 MHz; Medium parameters used: $f = 848.8$ MHz; $\sigma = 1$ S/m; $\epsilon_r = 53.58$; $\rho = 1000$ kg/m³ ; Phantom section: Flat Section

Ambient temperature (°C): 21.5, Liquid temperature (°C): 21.0

DASY5 Configuration:

- Probe: EX3DV4 - SN3710; ConvF(9.22, 9.22, 9.22); Calibrated: 04/03/2014;
- Sensor-Surface: 4mm (Mechanical Surface Detection)
- Electronics: DAE4 Sn1220; Calibrated: 22/01/2014
- Phantom: SAM2; Type: SAM; Serial: TP1562
- Measurement SW: DASY52, Version 52.8 (7); SEMCAD X Version 14.6.10 (7164)

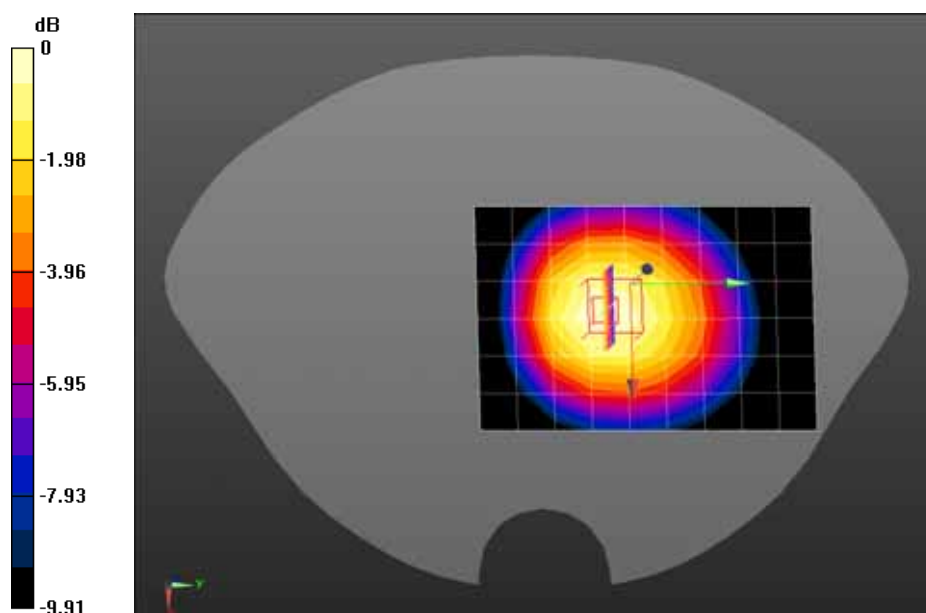
Configuration/GPRS850 High Body-Front/Area Scan (7x10x1): Measurement grid: dx=15mm, dy=15mm

Maximum value of SAR (measured) = 1.25 W/kg

Configuration/GPRS850 High Body-Front/Zoom Scan (5x5x7)/Cube 0: Measurement grid: dx=8mm, dy=8mm, dz=5mm, Reference Value = 26.009 V/m; Power Drift = 0.04 dB

Peak SAR (extrapolated) = 1.55 W/kg

SAR(1 g) = 1.2 W/kg; SAR(10 g) = 0.874 W/kg Maximum value of SAR (measured) = 1.27 W/kg



0 dB = 1.27 W/kg = 1.04 dBW/kg

Date/Time: 10-04-2014

Test Laboratory: QuieTek Lab

GPRS850 High Body-Front(4up)*

DUT: RhythmStar; Type: RS-10002

Communication System: UID 0, GPRS/EGPRS-4 Slot (0); Communication System Band: GSM 850; Duty Cycle: 1:2.1 ; Frequency: 848.8 MHz; Medium parameters used: $f = 848.8$ MHz; $\sigma = 1$ S/m; $\epsilon_r = 53.58$; $\rho = 1000$ kg/m³ ; Phantom section: Flat Section

Ambient temperature (°C): 21.5, Liquid temperature (°C): 21.0

DASY5 Configuration:

- Probe: EX3DV4 - SN3710; ConvF(9.22, 9.22, 9.22); Calibrated: 04/03/2014;
- Sensor-Surface: 4mm (Mechanical Surface Detection)
- Electronics: DAE4 Sn1220; Calibrated: 22/01/2014
- Phantom: SAM2; Type: SAM; Serial: TP1562
- Measurement SW: DASY52, Version 52.8 (7); SEMCAD X Version 14.6.10 (7164)

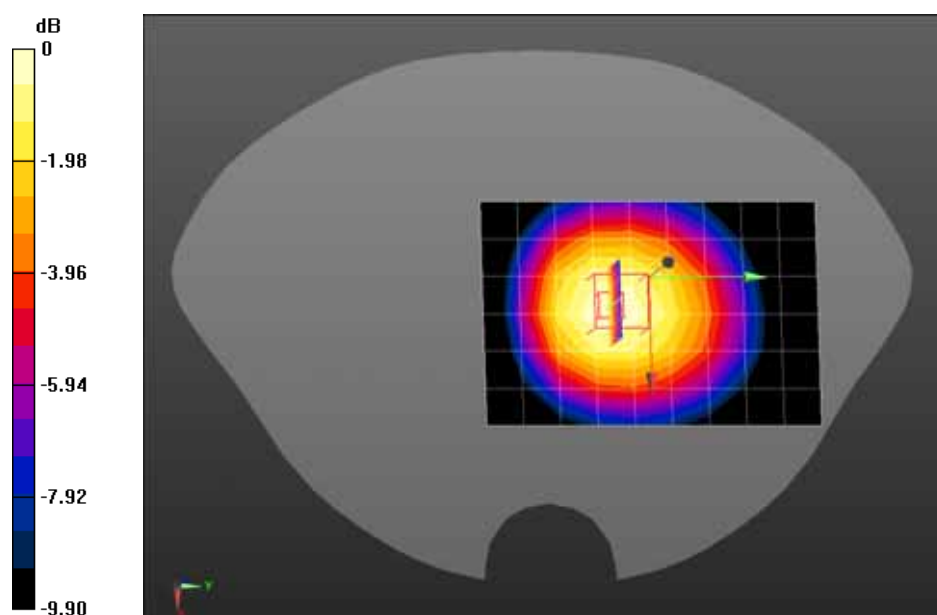
Configuration/GPRS850 High Body-Front/Area Scan (7x10x1): Measurement grid: dx=15mm, dy=15mm

Maximum value of SAR (measured) = 1.25 W/kg

Configuration/GPRS850 High Body-Front/Zoom Scan (5x5x7)/Cube 0: Measurement grid: dx=8mm, dy=8mm, dz=5mm, Reference Value = 26.192 V/m; Power Drift = 0.02 dB

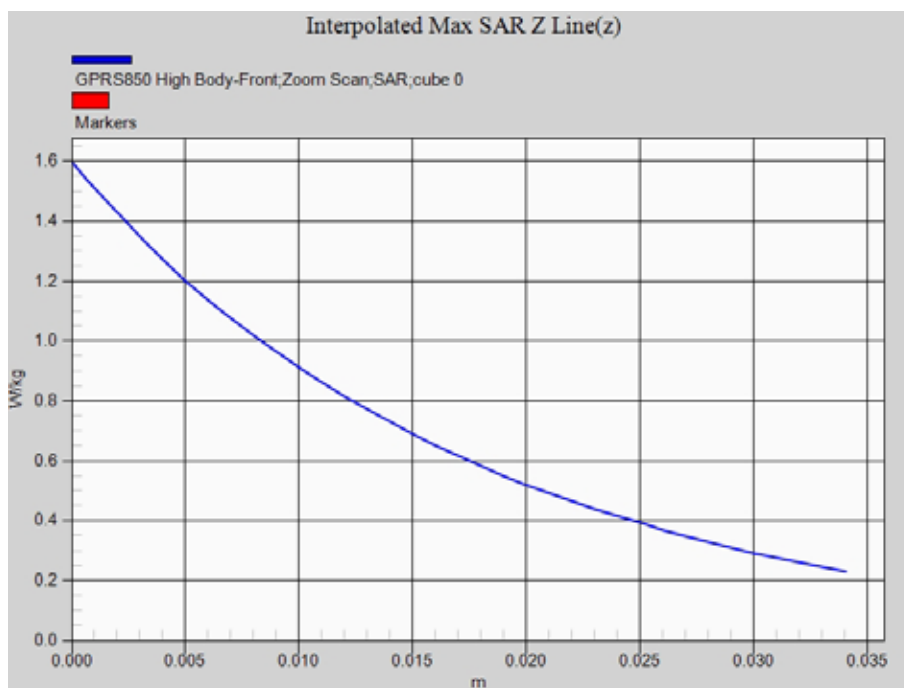
Peak SAR (extrapolated) = 1.60 W/kg

SAR(1 g) = 1.21 W/kg; SAR(10 g) = 0.877 W/kg Maximum value of SAR (measured) = 1.27 W/kg



0 dB = 1.27 W/kg = 1.04 dBW/kg

Z-Axis Plot



Date/Time: 10-04-2014

Test Laboratory: QuieTek Lab

GPRS850 Mid Body-Front(4up)(with ECG Cable)

DUT: RhythmStar; Type: RS-10002

Communication System: UID 0, GPRS/EGPRS-4 Slot (0); Communication System Band: GSM 850; Duty Cycle: 1:2.1 ; Frequency: 836.4 MHz; Medium parameters used: $f = 836.4$ MHz; $\sigma = 0.99$ S/m; $\epsilon_r = 53.71$; $\rho = 1000$ kg/m³ ; Phantom section: Flat Section

Ambient temperature (°C): 21.5, Liquid temperature (°C): 21.0

DASY5 Configuration:

- Probe: EX3DV4 - SN3710; ConvF(9.22, 9.22, 9.22); Calibrated: 04/03/2014;
- Sensor-Surface: 4mm (Mechanical Surface Detection)
- Electronics: DAE4 Sn1220; Calibrated: 22/01/2014
- Phantom: SAM2; Type: SAM; Serial: TP1562
- Measurement SW: DASY52, Version 52.8 (7); SEMCAD X Version 14.6.10 (7164)

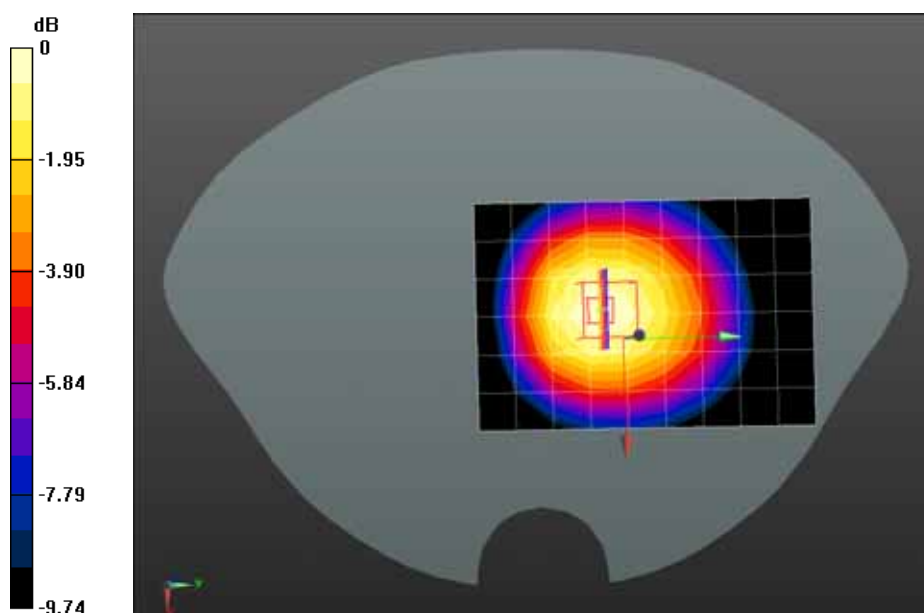
Configuration/GPRS850 Mid Body-Front/Area Scan (7x10x1): Measurement grid: dx=15mm, dy=15mm

Maximum value of SAR (measured) = 1.16 W/kg

Configuration/GPRS850 Mid Body-Front/Zoom Scan (5x5x7)/Cube 0: Measurement grid: dx=8mm, dy=8mm, dz=5mm, Reference Value = 27.028 V/m; Power Drift = -0.04 dB

Peak SAR (extrapolated) = 1.43 W/kg

SAR(1 g) = 1.08 W/kg; SAR(10 g) = 0.789 W/kg Maximum value of SAR (measured) = 1.15 W/kg



0 dB = 1.15 W/kg = 0.61 dBW/kg

Date/Time: 10-04-2014

Test Laboratory: QuieTek Lab

PCS1900 Mid Body-Back

DUT: RhythmStar; Type: RS-10002

Communication System: UID 0, Generic GSM (0); Communication System Band: PCS1900; Duty Cycle: 1:8.3; Frequency: 1880 MHz; Medium parameters used: $f = 1880$ MHz; $\sigma = 1.53$ S/m; $\epsilon_r = 52.51$; $\rho = 1000$ kg/m³; Phantom section: Flat Section

Ambient temperature (°C): 21.5, Liquid temperature (°C): 21.0

DASY5 Configuration:

- Probe: EX3DV4 - SN3710; ConvF(7.25, 7.25, 7.25); Calibrated: 04/03/2014;
- Sensor-Surface: 4mm (Mechanical Surface Detection)
- Electronics: DAE4 Sn1220; Calibrated: 22/01/2014
- Phantom: SAM1; Type: SAM; Serial: TP1561
- Measurement SW: DASY52, Version 52.8 (7); SEMCAD X Version 14.6.10 (7164)

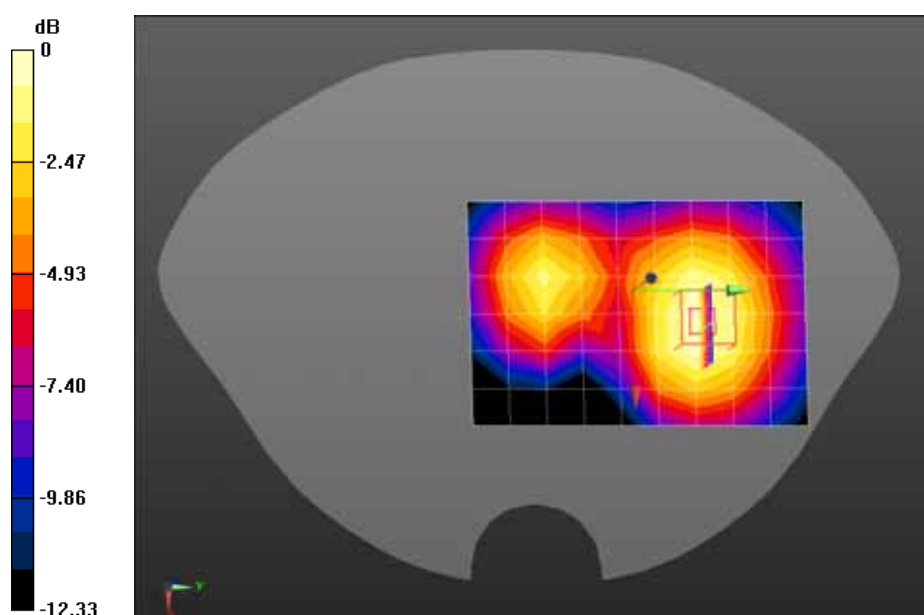
Configuration/PCS1900 Mid Body-Back/Area Scan (7x10x1): Measurement grid: dx=15mm, dy=15mm

Maximum value of SAR (measured) = 0.351 W/kg

Configuration/PCS1900 Mid Body-Back/Zoom Scan (5x5x7)/Cube 0: Measurement grid: dx=8mm, dy=8mm, dz=5mm, Reference Value = 11.311 V/m; Power Drift = 0.09 dB

Peak SAR (extrapolated) = 0.491 W/kg

SAR(1 g) = 0.346 W/kg; SAR(10 g) = 0.233 W/kg Maximum value of SAR (measured) = 0.368 W/kg



0 dB = 0.368 W/kg = -4.34 dBW/kg

Date/Time: 10-04-2014

Test Laboratory: QuieTek Lab

GPRS1900 Mid Body-Back(2up)

DUT: RhythmStar; Type: RS-10002

Communication System: UID 0, GPRS/EGPRS-2 Slot (0); Communication System Band: PCS1900; Duty Cycle: 1:4.2 ; Frequency: 1880 MHz; Medium parameters used: $f = 1880$ MHz; $\sigma = 1.53$ S/m; $\epsilon_r = 52.51$; $\rho = 1000$ kg/m³ ; Phantom section: Flat Section

Ambient temperature (°C): 21.5, Liquid temperature (°C): 21.0

DASY5 Configuration:

- Probe: EX3DV4 - SN3710; ConvF(7.25, 7.25, 7.25); Calibrated: 04/03/2014;
- Sensor-Surface: 4mm (Mechanical Surface Detection)
- Electronics: DAE4 Sn1220; Calibrated: 22/01/2014
- Phantom: SAM1; Type: SAM; Serial: TP1561
- Measurement SW: DASY52, Version 52.8 (7); SEMCAD X Version 14.6.10 (7164)

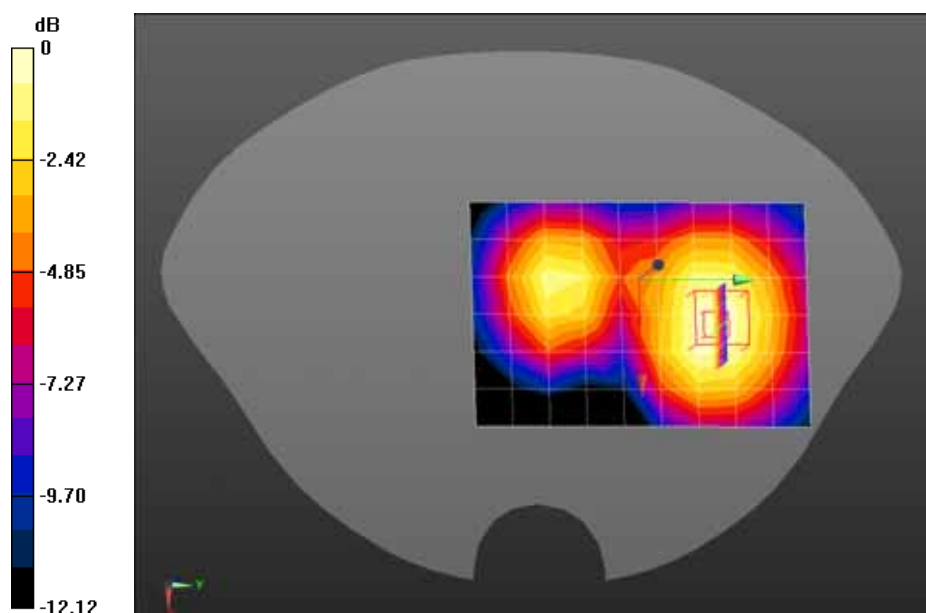
Configuration/GPRS1900 Mid Body-Back/Area Scan (7x10x1): Measurement grid: dx=15mm, dy=15mm

Maximum value of SAR (measured) = 0.448 W/kg

Configuration/GPRS1900 Mid Body-Back/Zoom Scan (5x5x7)/Cube 0: Measurement grid: dx=8mm, dy=8mm, dz=5mm, Reference Value = 13.092 V/m; Power Drift = 0.12 dB

Peak SAR (extrapolated) = 0.678 W/kg

SAR(1 g) = 0.468 W/kg; SAR(10 g) = 0.314 W/kg Maximum value of SAR (measured) = 0.499 W/kg



0 dB = 0.499 W/kg = -3.02 dBW/kg

Date/Time: 10-04-2014

Test Laboratory: QuieTek Lab

GPRS1900 Mid Body-Back(3up)

DUT: RhythmStar; Type: RS-10002

Communication System: UID 0, GPRS/EGPRS-3 Slot (0); Communication System Band: PCS 1900; Duty Cycle: 1:2.8 ; Frequency: 1880 MHz; Medium parameters used: $f = 1880$ MHz; $\sigma = 1.53$ S/m; $\epsilon_r = 52.51$; $\rho = 1000$ kg/m³ ; Phantom section: Flat Section

Ambient temperature (°C): 21.5, Liquid temperature (°C): 21.0

DASY5 Configuration:

- Probe: EX3DV4 - SN3710; ConvF(7.25, 7.25, 7.25); Calibrated: 04/03/2014;
- Sensor-Surface: 4mm (Mechanical Surface Detection)
- Electronics: DAE4 Sn1220; Calibrated: 22/01/2014
- Phantom: SAM1; Type: SAM; Serial: TP1561
- Measurement SW: DASY52, Version 52.8 (7); SEMCAD X Version 14.6.10 (7164)

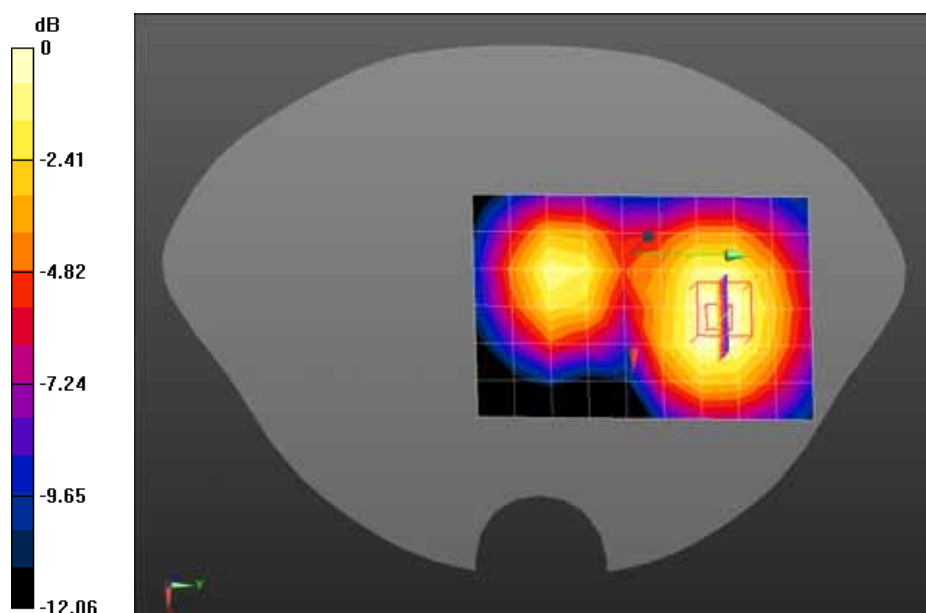
Configuration/GPRS1900 Mid Body-Back/Area Scan (7x10x1): Measurement grid: dx=15mm, dy=15mm

Maximum value of SAR (measured) = 0.424 W/kg

Configuration/GPRS1900 Mid Body-Back/Zoom Scan (5x5x7)/Cube 0: Measurement grid: dx=8mm, dy=8mm, dz=5mm, Reference Value = 12.730 V/m; Power Drift = 0.05 dB

Peak SAR (extrapolated) = 0.621 W/kg

SAR(1 g) = 0.434 W/kg; SAR(10 g) = 0.292 W/kg Maximum value of SAR (measured) = 0.462 W/kg



0 dB = 0.462 W/kg = -3.35 dBW/kg

Date/Time: 10-04-2014

Test Laboratory: QuieTek Lab

GPRS1900 Low Body-Back(4up)

DUT: RhythmStar; Type: RS-10002

Communication System: UID 0, GPRS/EGPRS-4 Slot (0); Communication System Band: PCS 1900; Duty Cycle: 1:2.1 ; Frequency: 1850.2 MHz; Medium parameters used: $f = 1850.2$ MHz; $\sigma = 1.5$ S/m; $\epsilon_r = 52.56$; $\rho = 1000$ kg/m³ ; Phantom section: Flat Section

Ambient temperature (°C): 21.5, Liquid temperature (°C): 21.0

DASY5 Configuration:

- Probe: EX3DV4 - SN3710; ConvF(7.25, 7.25, 7.25); Calibrated: 04/03/2014;
- Sensor-Surface: 4mm (Mechanical Surface Detection)
- Electronics: DAE4 Sn1220; Calibrated: 22/01/2014
- Phantom: SAM1; Type: SAM; Serial: TP1561
- Measurement SW: DASY52, Version 52.8 (7); SEMCAD X Version 14.6.10 (7164)

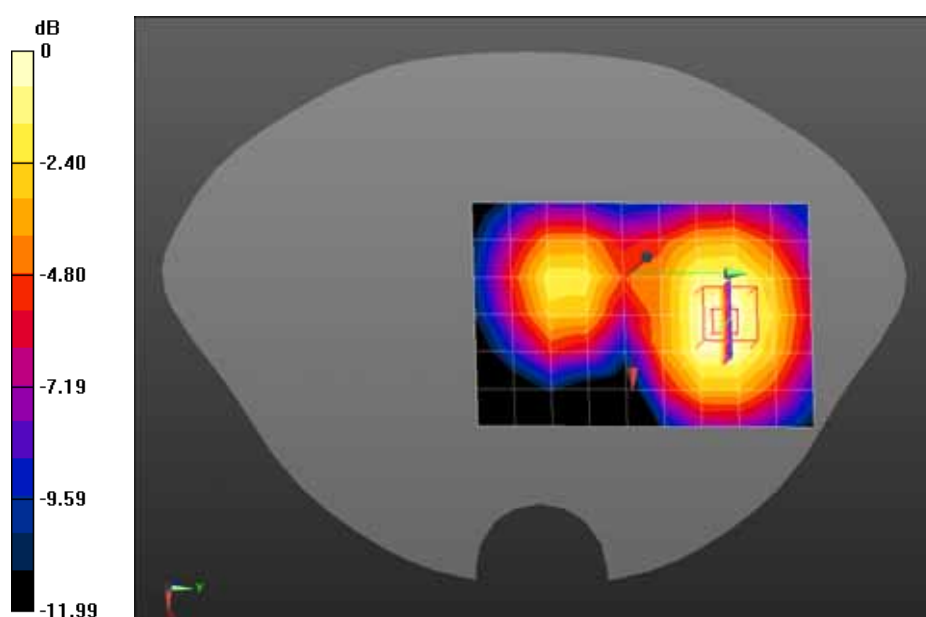
Configuration/GPRS1900 Low Body-Back/Area Scan (7x10x1): Measurement grid: dx=15mm, dy=15mm

Maximum value of SAR (measured) = 0.844 W/kg

Configuration/GPRS1900 Low Body-Back/Zoom Scan (5x5x7)/Cube 0: Measurement grid: dx=8mm, dy=8mm, dz=5mm, Reference Value = 16.079 V/m; Power Drift = 0.11 dB

Peak SAR (extrapolated) = 1.20 W/kg

SAR(1 g) = 0.841 W/kg; SAR(10 g) = 0.570 W/kg Maximum value of SAR (measured) = 0.895 W/kg



0 dB = 0.895 W/kg = -0.48 dBW/kg

Date/Time: 10-04-2014

Test Laboratory: QuieTek Lab

GPRS1900 Mid Body-Back(4up)

DUT: RhythmStar; Type: RS-10002

Communication System: UID 0, GPRS/EGPRS-4 Slot (0); Communication System Band: PCS 1900; Duty Cycle: 1:2.1 ; Frequency: 1880 MHz; Medium parameters used: $f = 1880$ MHz; $\sigma = 1.53$ S/m; $\epsilon_r = 52.51$; $\rho = 1000$ kg/m³ ; Phantom section: Flat Section

Ambient temperature (°C): 21.5, Liquid temperature (°C): 21.0

DASY5 Configuration:

- Probe: EX3DV4 - SN3710; ConvF(7.25, 7.25, 7.25); Calibrated: 04/03/2014;
- Sensor-Surface: 4mm (Mechanical Surface Detection)
- Electronics: DAE4 Sn1220; Calibrated: 22/01/2014
- Phantom: SAM1; Type: SAM; Serial: TP1561
- Measurement SW: DASY52, Version 52.8 (7); SEMCAD X Version 14.6.10 (7164)

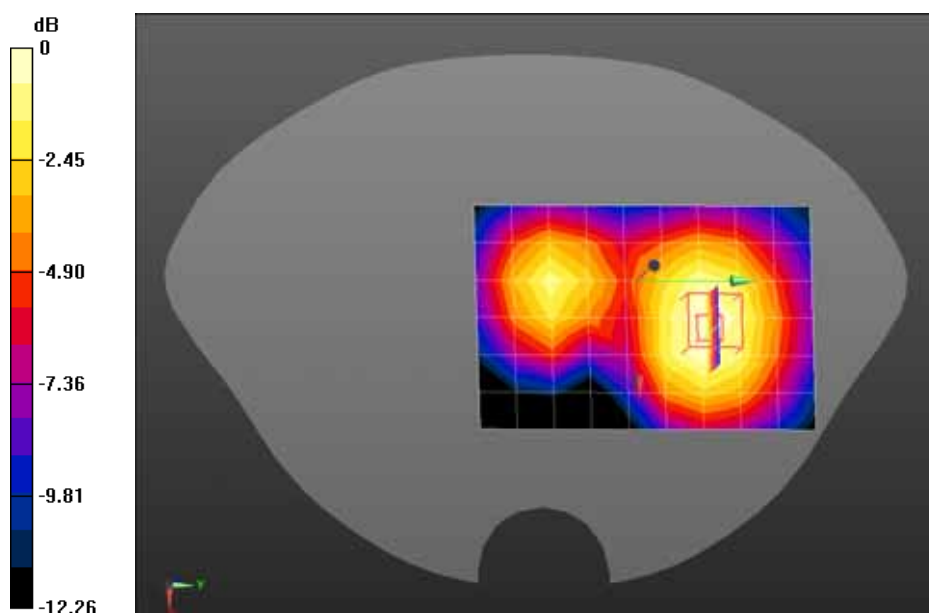
Configuration/GPRS1900 Mid Body-Back/Area Scan (7x10x1): Measurement grid: dx=15mm, dy=15mm

Maximum value of SAR (measured) = 0.945 W/kg

Configuration/GPRS1900 Mid Body-Back/Zoom Scan (5x5x7)/Cube 0: Measurement grid: dx=8mm, dy=8mm, dz=5mm, Reference Value = 18.927 V/m; Power Drift = -0.14 dB

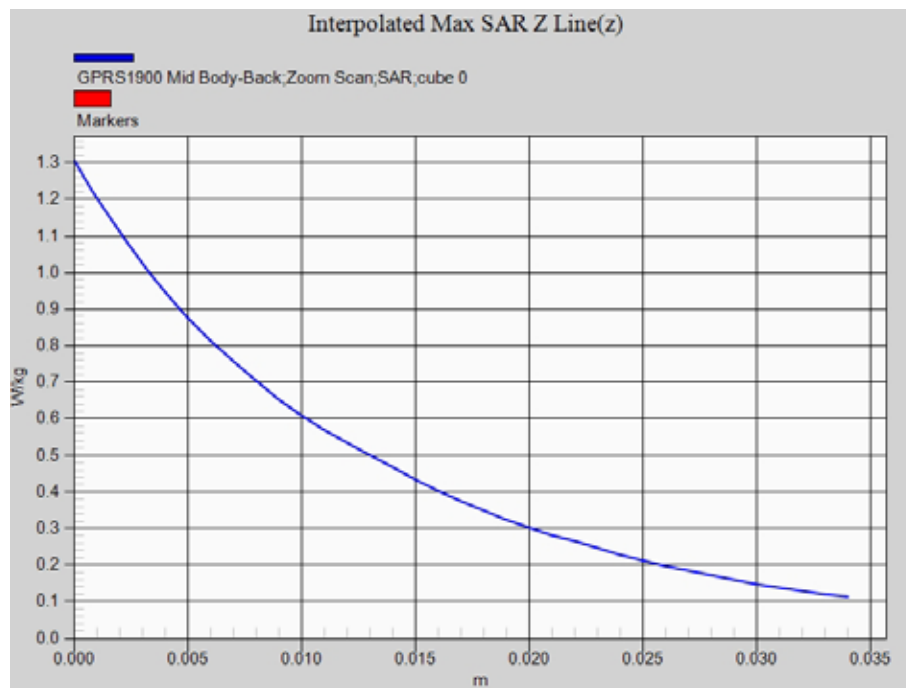
Peak SAR (extrapolated) = 1.31 W/kg

SAR(1 g) = 0.890 W/kg; SAR(10 g) = 0.596 W/kg Maximum value of SAR (measured) = 0.946 W/kg



0 dB = 0.946 W/kg = -0.24 dBW/kg

Z-Axis Plot



Date/Time: 10-04-2014

Test Laboratory: QuieTek Lab

GPRS1900 Mid Body-Back(4up)*

DUT: RhythmStar; Type: RS-10002

Communication System: UID 0, GPRS/EGPRS-4 Slot (0); Communication System Band: PCS 1900; Duty Cycle: 1:2.1 ; Frequency: 1880 MHz; Medium parameters used: $f = 1880$ MHz; $\sigma = 1.53$ S/m; $\epsilon_r = 52.51$; $\rho = 1000$ kg/m³ ; Phantom section: Flat Section

Ambient temperature (°C): 21.5, Liquid temperature (°C): 21.0

DASY5 Configuration:

- Probe: EX3DV4 - SN3710; ConvF(7.25, 7.25, 7.25); Calibrated: 04/03/2014;
- Sensor-Surface: 4mm (Mechanical Surface Detection)
- Electronics: DAE4 Sn1220; Calibrated: 22/01/2014
- Phantom: SAM1; Type: SAM; Serial: TP1561
- Measurement SW: DASY52, Version 52.8 (7); SEMCAD X Version 14.6.10 (7164)

Configuration/GPRS1900 Mid Body-Back/Area Scan (7x10x1): Measurement grid: dx=15mm, dy=15mm

Maximum value of SAR (measured) = 0.925 W/kg

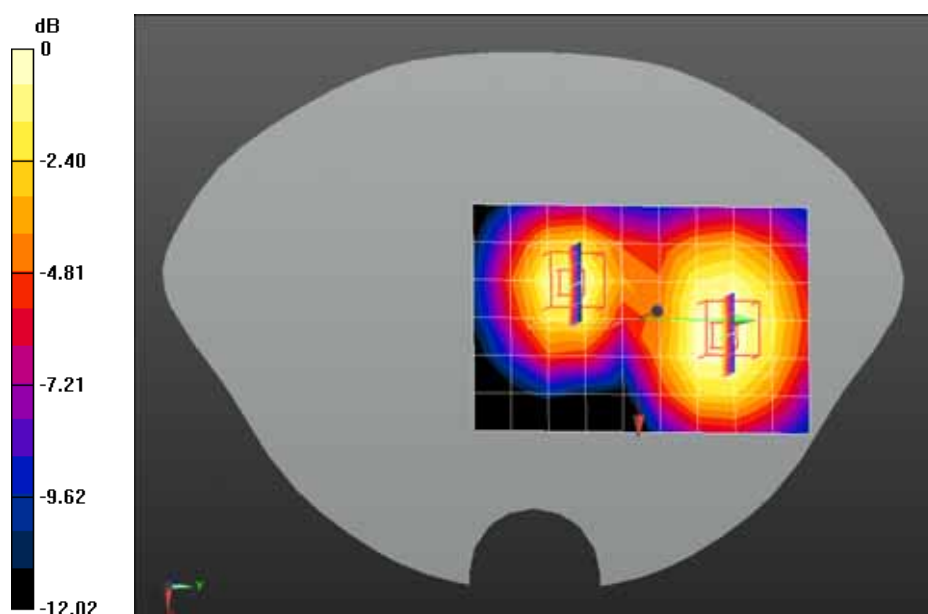
Configuration/GPRS1900 Mid Body-Back/Zoom Scan (5x5x7)/Cube 1: Measurement grid: dx=8mm, dy=8mm, dz=5mm, Reference Value = 17.768 V/m; Power Drift = -0.07 dB

Peak SAR (extrapolated) = 1.14 W/kg

SAR(1 g) = 0.742 W/kg; SAR(10 g) = 0.459 W/kg Maximum value of SAR (measured) = 0.801 W/kg**Configuration/GPRS1900 Mid Body-Back/Zoom Scan (5x5x7)/Cube 0:** Measurement grid: dx=8mm, dy=8mm, dz=5mm, Reference Value = 17.768 V/m; Power Drift = -0.07 dB

Peak SAR (extrapolated) = 1.23 W/kg

SAR(1 g) = 0.849 W/kg; SAR(10 g) = 0.570 W/kg Maximum value of SAR (measured) = 0.909 W/kg



0 dB = 0.909 W/kg = -0.41 dBW/kg

Date/Time: 10-04-2014

Test Laboratory: QuieTek Lab

GPRS1900 High Body-Back(4up)

DUT: RhythmStar; Type: RS-10002

Communication System: UID 0, GPRS/EGPRS-4 Slot (0); Communication System Band: PCS 1900; Duty Cycle: 1:2.1 ; Frequency: 1909.8 MHz; Medium parameters used: $f = 1909.8$ MHz; $\sigma = 1.57$ S/m; $\epsilon_r = 52.46$; $\rho = 1000$ kg/m³ ; Phantom section: Flat Section

Ambient temperature (°C): 21.5, Liquid temperature (°C): 21.0

DASY5 Configuration:

- Probe: EX3DV4 - SN3710; ConvF(7.25, 7.25, 7.25); Calibrated: 04/03/2014;
- Sensor-Surface: 4mm (Mechanical Surface Detection)
- Electronics: DAE4 Sn1220; Calibrated: 22/01/2014
- Phantom: SAM1; Type: SAM; Serial: TP1561
- Measurement SW: DASY52, Version 52.8 (7); SEMCAD X Version 14.6.10 (7164)

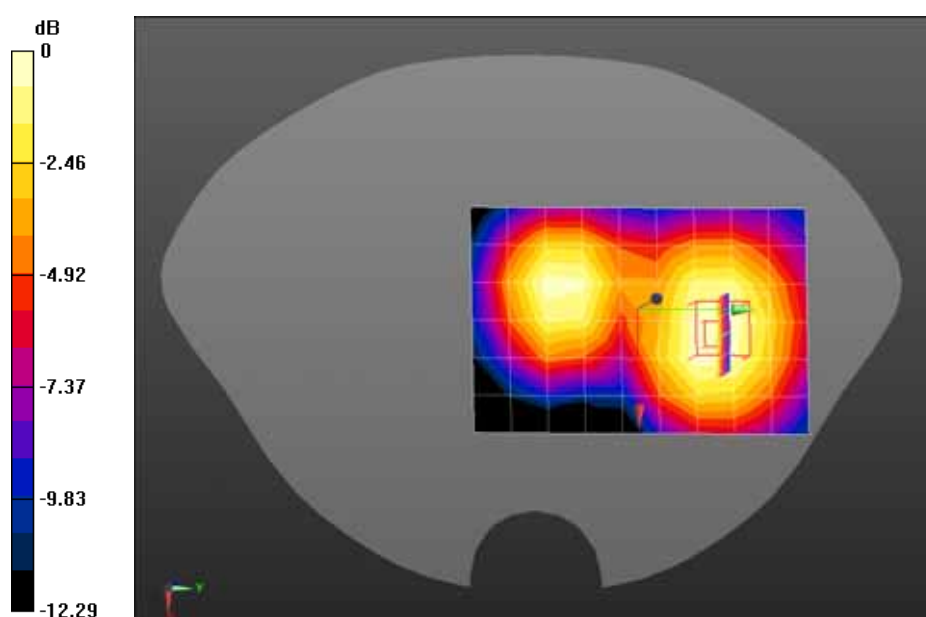
Configuration/GPRS1900 High Body-Back/Area Scan (7x10x1): Measurement grid: dx=15mm, dy=15mm

Maximum value of SAR (measured) = 0.667 W/kg

Configuration/GPRS1900 High Body-Back/Zoom Scan (5x5x7)/Cube 0: Measurement grid: dx=8mm, dy=8mm, dz=5mm, Reference Value = 16.767 V/m; Power Drift = -0.10 dB

Peak SAR (extrapolated) = 0.956 W/kg

SAR(1 g) = 0.652 W/kg; SAR(10 g) = 0.434 W/kg Maximum value of SAR (measured) = 0.697 W/kg



0 dB = 0.697 W/kg = -1.57 dBW/kg

Date/Time: 10-04-2014

Test Laboratory: QuieTek Lab

GPRS1900 Mid Body-Front(4up)

DUT: RhythmStar; Type: RS-10002

Communication System: UID 0, GPRS/EGPRS-4 Slot (0); Communication System Band: PCS 1900; Duty Cycle: 1:2.1 ; Frequency: 1880 MHz; Medium parameters used: $f = 1880$ MHz; $\sigma = 1.53$ S/m; $\epsilon_r = 52.51$; $\rho = 1000$ kg/m³ ; Phantom section: Flat Section

Ambient temperature (°C): 21.5, Liquid temperature (°C): 21.0

DASY5 Configuration:

- Probe: EX3DV4 - SN3710; ConvF(7.25, 7.25, 7.25); Calibrated: 04/03/2014;
- Sensor-Surface: 4mm (Mechanical Surface Detection)
- Electronics: DAE4 Sn1220; Calibrated: 22/01/2014
- Phantom: SAM1; Type: SAM; Serial: TP1561
- Measurement SW: DASY52, Version 52.8 (7); SEMCAD X Version 14.6.10 (7164)

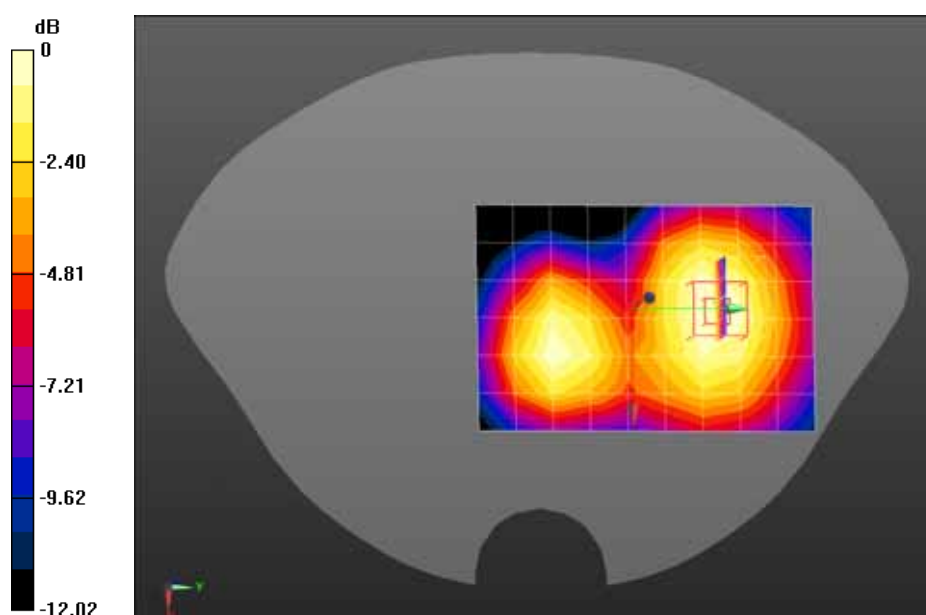
Configuration/GPRS1900 Mid Body-Front/Area Scan (7x10x1): Measurement grid: dx=15mm, dy=15mm

Maximum value of SAR (measured) = 0.701 W/kg

Configuration/GPRS1900 Mid Body-Front/Zoom Scan (5x5x7)/Cube 0: Measurement grid: dx=8mm, dy=8mm, dz=5mm, Reference Value = 18.443 V/m; Power Drift = -0.06 dB

Peak SAR (extrapolated) = 0.974 W/kg

SAR(1 g) = 0.673 W/kg; SAR(10 g) = 0.453 W/kg Maximum value of SAR (measured) = 0.712 W/kg



0 dB = 0.712 W/kg = -1.48 dBW/kg

Date/Time: 10-04-2014

Test Laboratory: QuieTek Lab

WCDMA Band II Mid Body-Back

DUT: RhythmStar; Type: RS-10002

Communication System: UID 0, UMTS; Communication System Band: Band II UTRA/FDD; Duty Cycle: 1:1.0; Frequency: 1880 MHz; Medium parameters used: $f = 1880$ MHz; $\sigma = 1.53$ S/m; $\epsilon_r = 52.51$; $\rho = 1000$ kg/m³; Phantom section: Flat Section

Ambient temperature (°C): 21.5, Liquid temperature (°C): 21.0

DASY5 Configuration:

- Probe: EX3DV4 - SN3710; ConvF(7.25, 7.25, 7.25); Calibrated: 04/03/2014;
- Sensor-Surface: 4mm (Mechanical Surface Detection)
- Electronics: DAE4 Sn1220; Calibrated: 22/01/2014
- Phantom: SAM1; Type: SAM; Serial: TP1561
- Measurement SW: DASY52, Version 52.8 (7); SEMCAD X Version 14.6.10 (7164)

Configuration/WCDMA Band II Mid Body-Back/Area Scan (7x10x1): Measurement grid: dx=15mm, dy=15mm

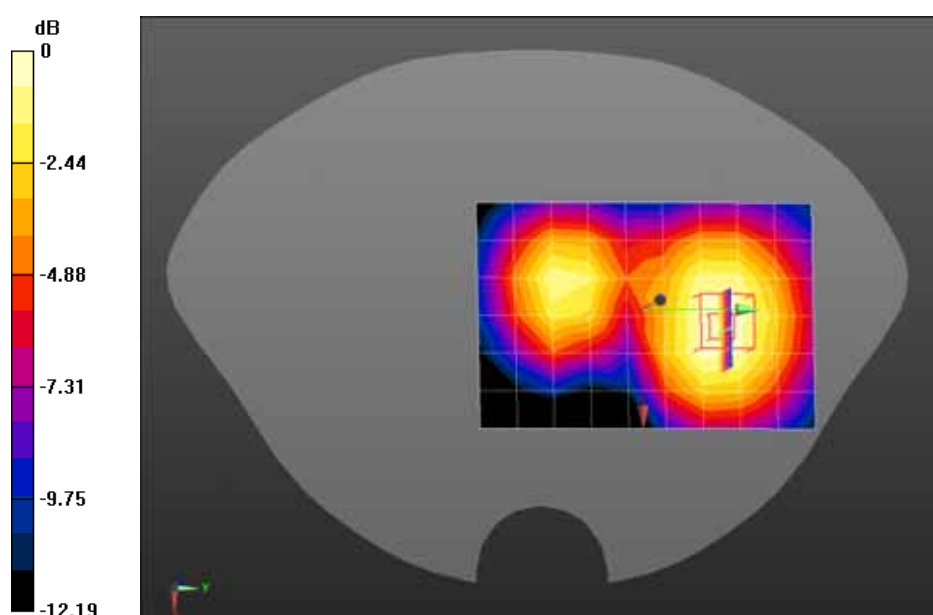
Maximum value of SAR (measured) = 0.433 W/kg

Configuration/WCDMA Band II Mid Body-Back/Zoom Scan (5x5x7)/Cube 0: Measurement grid:

dx=8mm, dy=8mm, dz=5mm, Reference Value = 12.803 V/m; Power Drift = 0.11 dB

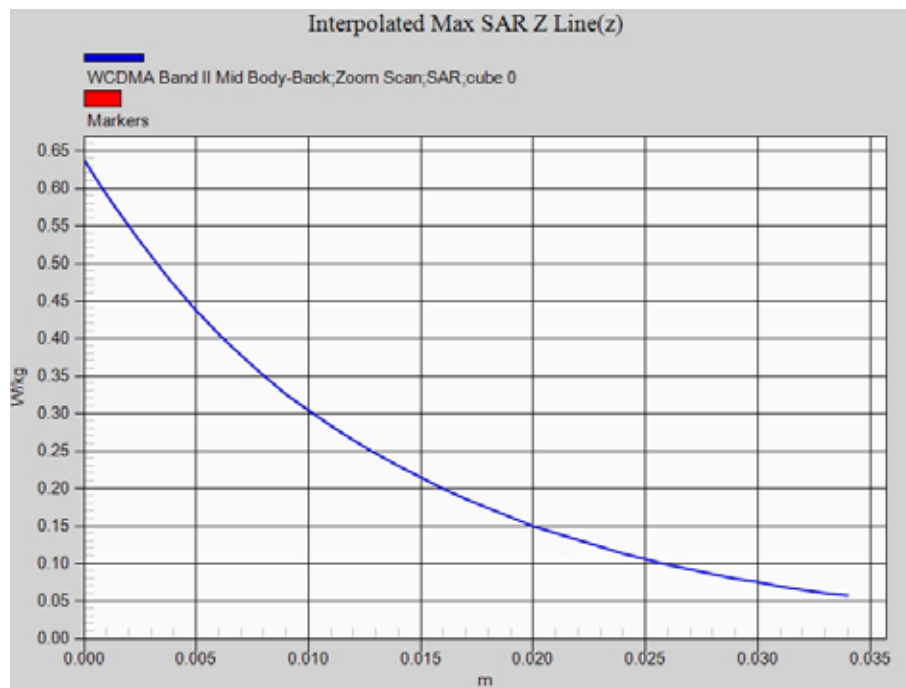
Peak SAR (extrapolated) = 0.638 W/kg

SAR(1 g) = 0.441 W/kg; SAR(10 g) = 0.296 W/kg Maximum value of SAR (measured) = 0.470 W/kg



0 dB = 0.470 W/kg = -3.28 dBW/kg

Z-Axis Plot



Date/Time: 10-04-2014

Test Laboratory: QuieTek Lab

WCDMA Band II Mid Body-Front

DUT: RhythmStar; Type: RS-10002

Communication System: UID 0, UMTS (0); Communication System Band: Band II UTRA/FDD; Duty Cycle: 1:1.0; Frequency: 1880 MHz; Medium parameters used: $f = 1880$ MHz; $\sigma = 1.53$ S/m; $\epsilon_r = 52.51$; $\rho = 1000$ kg/m³; Phantom section: Flat Section

Ambient temperature (°C): 21.5, Liquid temperature (°C): 21.0

DASY5 Configuration:

- Probe: EX3DV4 - SN3710; ConvF(7.25, 7.25, 7.25); Calibrated: 04/03/2014;
- Sensor-Surface: 4mm (Mechanical Surface Detection)
- Electronics: DAE4 Sn1220; Calibrated: 22/01/2014
- Phantom: SAM1; Type: SAM; Serial: TP1561
- Measurement SW: DASY52, Version 52.8 (7); SEMCAD X Version 14.6.10 (7164)

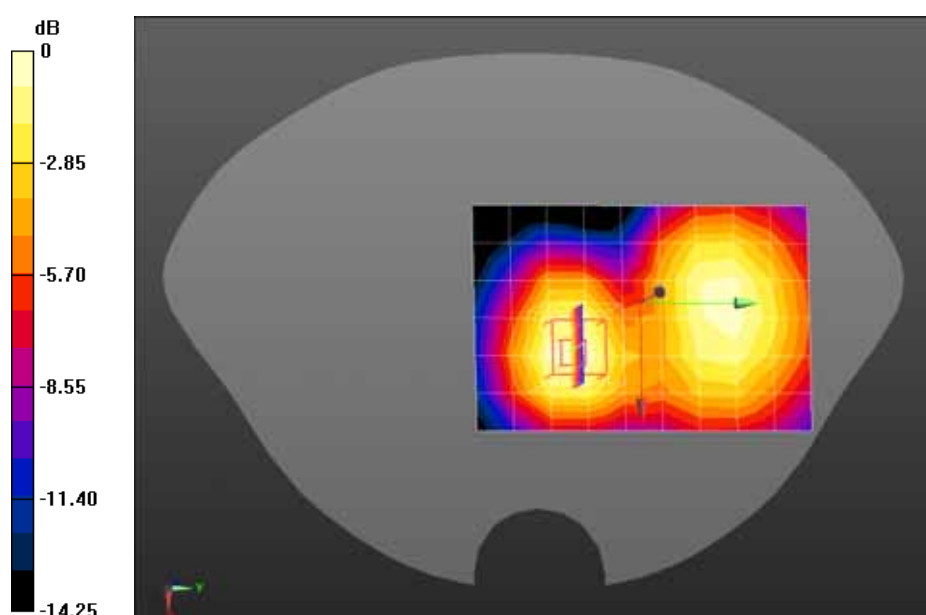
Configuration/WCDMA Band II Mid Body-Front/Area Scan (7x10x1): Measurement grid: dx=15mm, dy=15mm

Maximum value of SAR (measured) = 0.368 W/kg

Configuration/WCDMA Band II Mid Body-Front/Zoom Scan (5x5x7)/Cube 0: Measurement grid: dx=8mm, dy=8mm, dz=5mm, Reference Value = 11.752 V/m; Power Drift = -0.19 dB

Peak SAR (extrapolated) = 0.565 W/kg

SAR(1 g) = 0.364 W/kg; SAR(10 g) = 0.225 W/kg Maximum value of SAR (measured) = 0.396 W/kg



0 dB = 0.396 W/kg = -4.02 dBW/kg

Date/Time: 10-04-2014

Test Laboratory: QuieTek Lab

WCDMA Band V Mid Body-Back

DUT: RhythmStar; Type: RS-10002

Communication System: UID 0, UMTS (0); Communication System Band: Band V UTRA/FDD; Duty Cycle: 1:1.0; Frequency: 836.4 MHz; Medium parameters used: $f = 836.4$ MHz; $\sigma = 0.99$ S/m; $\epsilon_r = 53.71$; $\rho = 1000$ kg/m³; Phantom section: Flat Section

Ambient temperature (°C): 21.5, Liquid temperature (°C): 21.0

DASY5 Configuration:

- Probe: EX3DV4 - SN3710; ConvF(9.22, 9.22, 9.22); Calibrated: 04/03/2014;
- Sensor-Surface: 4mm (Mechanical Surface Detection)
- Electronics: DAE4 Sn1220; Calibrated: 22/01/2014
- Phantom: SAM2; Type: SAM; Serial: TP1562
- Measurement SW: DASY52, Version 52.8 (7); SEMCAD X Version 14.6.10 (7164)

Configuration/WCDMA Band V Mid Body-Back/Area Scan (7x10x1): Measurement grid: dx=15mm, dy=15mm

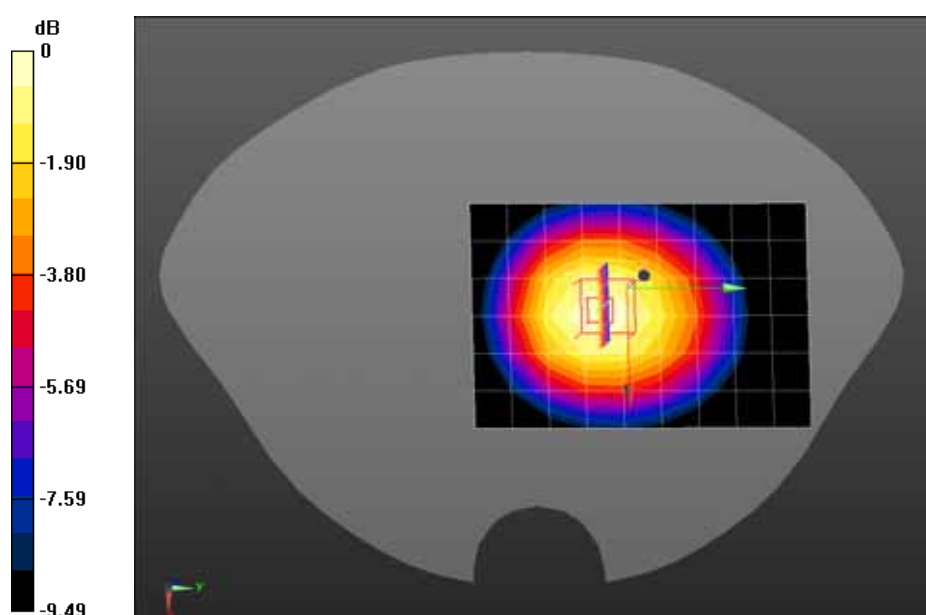
Maximum value of SAR (measured) = 0.328 W/kg

Configuration/WCDMA Band V Mid Body-Back/Zoom Scan (5x5x7)/Cube 0: Measurement grid:

dx=8mm, dy=8mm, dz=5mm, Reference Value = 14.216 V/m; Power Drift = 0.01 dB

Peak SAR (extrapolated) = 0.414 W/kg

SAR(1 g) = 0.314 W/kg; SAR(10 g) = 0.229 W/kg Maximum value of SAR (measured) = 0.333 W/kg



0 dB = 0.333 W/kg = -4.78 dBW/kg

Date/Time: 10-04-2014

Test Laboratory: QuieTek Lab

WCDMA Band V Mid Body-Front

DUT: RhythmStar; Type: RS-10002

Communication System: UID 0, UMTS (0); Communication System Band: Band V UTRA/FDD; Duty Cycle: 1:1.0; Frequency: 836.4 MHz; Medium parameters used: $f = 836.4$ MHz; $\sigma = 0.99$ S/m; $\epsilon_r = 53.71$; $\rho = 1000$ kg/m³; Phantom section: Flat Section

Ambient temperature (°C): 21.5, Liquid temperature (°C): 21.0

DASY5 Configuration:

- Probe: EX3DV4 - SN3710; ConvF(9.22, 9.22, 9.22); Calibrated: 04/03/2014;
- Sensor-Surface: 4mm (Mechanical Surface Detection)
- Electronics: DAE4 Sn1220; Calibrated: 22/01/2014
- Phantom: SAM2; Type: SAM; Serial: TP1562
- Measurement SW: DASY52, Version 52.8 (7); SEMCAD X Version 14.6.10 (7164)

Configuration/WCDMA Band V Mid Body-Front/Area Scan (7x10x1): Measurement grid: dx=15mm, dy=15mm

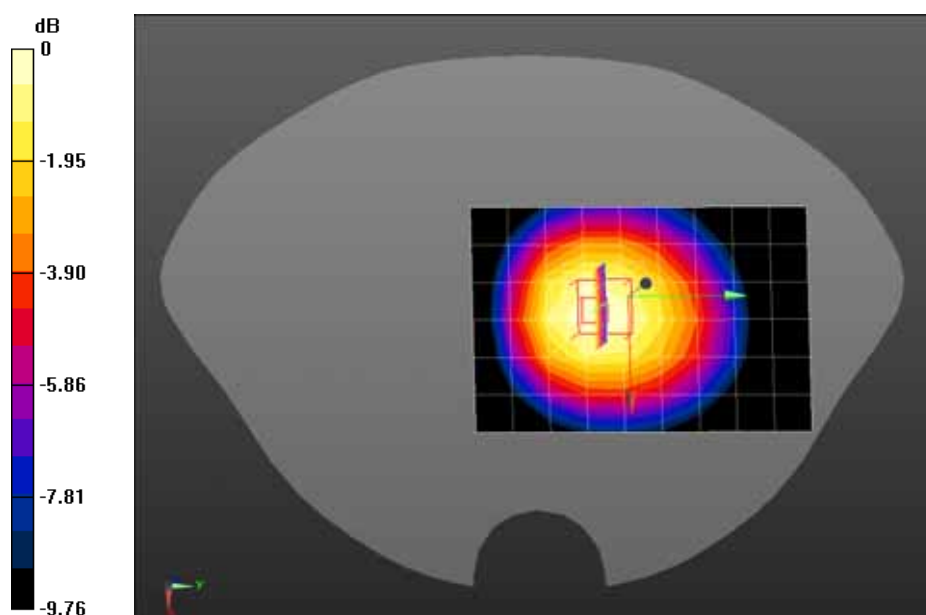
Maximum value of SAR (measured) = 0.415 W/kg

Configuration/WCDMA Band V Mid Body-Front/Zoom Scan (5x5x7)/Cube 0: Measurement grid:

dx=8mm, dy=8mm, dz=5mm, Reference Value = 15.974 V/m; Power Drift = -0.01 dB

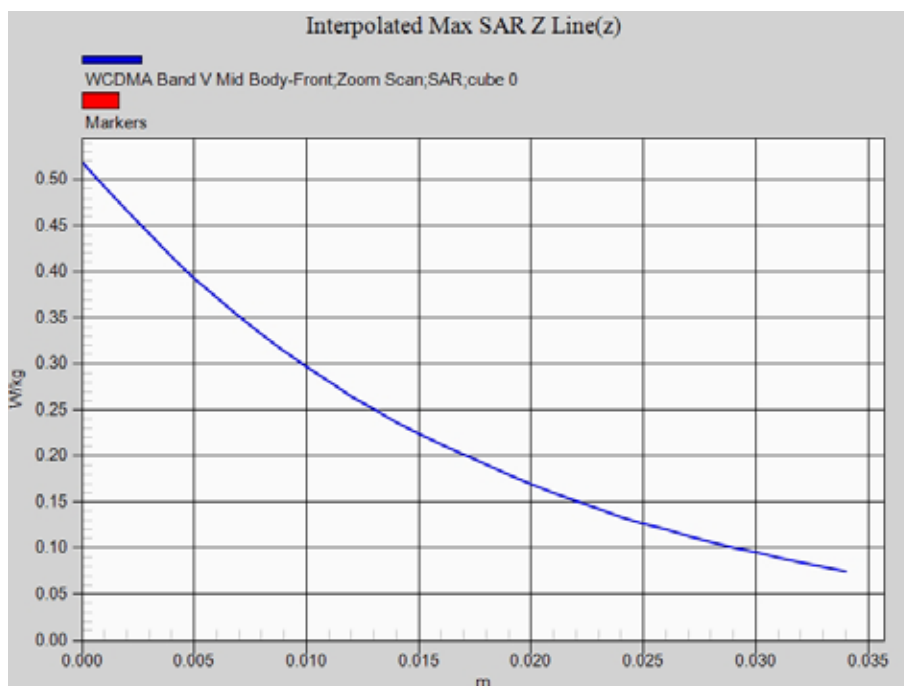
Peak SAR (extrapolated) = 0.520 W/kg

SAR(1 g) = 0.394 W/kg; SAR(10 g) = 0.286 W/kg Maximum value of SAR (measured) = 0.418 W/kg



0 dB = 0.418 W/kg = -3.79 dBW/kg

Z-Axis Plot



Appendix C. Test Setup Photographs & EUT Photographs

Test Setup Photographs

Appendix D. Probe Calibration Data

Calibration Laboratory of
Schmid & Partner
Engineering AG
Zeughausstrasse 43, 8004 Zurich, Switzerland



S Schweizerischer Kalibrierdienst
C Service suisse d'étalonnage
S Servizio svizzero di taratura
Swiss Calibration Service

Accredited by the Swiss Accreditation Service (SAS)
The Swiss Accreditation Service is one of the signatories to the EA
Multilateral Agreement for the recognition of calibration certificates

Accreditation No.: **SCS 108**

Client **Quietek (Auden)**

Certificate No: **EX3-3710_Mar14**

CALIBRATION CERTIFICATE

Object **EX3DV4 - SN:3710**

Calibration procedure(s) **QA CAL-01.v9, QA CAL-12.v9, QA CAL-14.v4, QA CAL-23.v5,
QA CAL-25.v6
Calibration procedure for dosimetric E-field probes**

Calibration date: **March 4, 2014**

This calibration certificate documents the traceability to national standards, which realize the physical units of measurements (SI).
The measurements and the uncertainties with confidence probability are given on the following pages and are part of the certificate.

All calibrations have been conducted in the closed laboratory facility: environment temperature (22 ± 3)°C and humidity < 70%.

Calibration Equipment used (M&TE critical for calibration)

| Primary Standards | ID | Cal Date (Certificate No.) | Scheduled Calibration |
|----------------------------|-----------------|-----------------------------------|------------------------|
| Power meter E4419B | GB41293874 | 04-Apr-13 (No. 217-01733) | Apr-14 |
| Power sensor E4412A | MY41498087 | 04-Apr-13 (No. 217-01733) | Apr-14 |
| Reference 3 dB Attenuator | SN: S5054 (3c) | 04-Apr-13 (No. 217-01737) | Apr-14 |
| Reference 20 dB Attenuator | SN: S5277 (20x) | 04-Apr-13 (No. 217-01735) | Apr-14 |
| Reference 30 dB Attenuator | SN: S5129 (30b) | 04-Apr-13 (No. 217-01738) | Apr-14 |
| Reference Probe ES3DV2 | SN: 3013 | 30-Dec-13 (No. ES3-3013_Dec13) | Dec-14 |
| DAE4 | SN: 660 | 13-Dec-13 (No. DAE4-660_Dec13) | Dec-14 |
| Secondary Standards | ID | Check Date (in house) | Scheduled Check |
| RF generator HP 8648C | US3642U01700 | 4-Aug-99 (in house check Apr-13) | In house check: Apr-16 |
| Network Analyzer HP 8753E | US37390585 | 18-Oct-01 (in house check Oct-13) | In house check: Oct-14 |

| | Name | Function | Signature |
|-----------------------|----------------|-----------------------|-----------|
| Calibrated by: | Jeton Kastrati | Laboratory Technician | |
| Approved by: | Katja Pokovic | Technical Manager | |
| Issued: March 4, 2014 | | | |

This calibration certificate shall not be reproduced except in full without written approval of the laboratory.

**Calibration Laboratory of
Schmid & Partner
Engineering AG**
Zeughausstrasse 43, 8004 Zurich, Switzerland



S Schweizerischer Kalibrierdienst
C Service suisse d'étalonnage
S Servizio svizzero di taratura
S Swiss Calibration Service

Accredited by the Swiss Accreditation Service (SAS)
The Swiss Accreditation Service is one of the signatories to the EA
Multilateral Agreement for the recognition of calibration certificates

Accreditation No.: **SCS 108**

Glossary:

| | |
|--------------------------|---|
| TSL | tissue simulating liquid |
| NORM _{x,y,z} | sensitivity in free space |
| ConvF | sensitivity in TSL / NORM _{x,y,z} |
| DCP | diode compression point |
| CF | crest factor (1/duty_cycle) of the RF signal |
| A, B, C, D | modulation dependent linearization parameters |
| Polarization φ | φ rotation around probe axis |
| Polarization ϑ | ϑ rotation around an axis that is in the plane normal to probe axis (at measurement center), i.e., $\vartheta = 0$ is normal to probe axis |
| Connector Angle | information used in DASY system to align probe sensor X to the robot coordinate system |

Calibration is Performed According to the Following Standards:

- IEEE Std 1528-2013, "IEEE Recommended Practice for Determining the Peak Spatial-Averaged Specific Absorption Rate (SAR) in the Human Head from Wireless Communications Devices: Measurement Techniques", June 2013
- IEC 62209-1, "Procedure to measure the Specific Absorption Rate (SAR) for hand-held devices used in close proximity to the ear (frequency range of 300 MHz to 3 GHz)", February 2005

Methods Applied and Interpretation of Parameters:

- NORM_{x,y,z}**: Assessed for E-field polarization $\vartheta = 0$ ($f \leq 900$ MHz in TEM-cell; $f > 1800$ MHz: R22 waveguide). NORM_{x,y,z} are only intermediate values, i.e., the uncertainties of NORM_{x,y,z} does not affect the E²-field uncertainty inside TSL (see below ConvF).
- NORM(f)_{x,y,z}** = NORM_{x,y,z} * frequency_response (see Frequency Response Chart). This linearization is implemented in DASY4 software versions later than 4.2. The uncertainty of the frequency response is included in the stated uncertainty of ConvF.
- DCP_{x,y,z}**: DCP are numerical linearization parameters assessed based on the data of power sweep with CW signal (no uncertainty required). DCP does not depend on frequency nor media.
- PAR**: PAR is the Peak to Average Ratio that is not calibrated but determined based on the signal characteristics
- A_{x,y,z}; B_{x,y,z}; C_{x,y,z}; D_{x,y,z}; VR_{x,y,z}**: A, B, C, D are numerical linearization parameters assessed based on the data of power sweep for specific modulation signal. The parameters do not depend on frequency nor media. VR is the maximum calibration range expressed in RMS voltage across the diode.
- ConvF and Boundary Effect Parameters**: Assessed in flat phantom using E-field (or Temperature Transfer Standard for $f \leq 800$ MHz) and inside waveguide using analytical field distributions based on power measurements for $f > 800$ MHz. The same setups are used for assessment of the parameters applied for boundary compensation (alpha, depth) of which typical uncertainty values are given. These parameters are used in DASY4 software to improve probe accuracy close to the boundary. The sensitivity in TSL corresponds to NORM_{x,y,z} * ConvF whereby the uncertainty corresponds to that given for ConvF. A frequency dependent ConvF is used in DASY version 4.4 and higher which allows extending the validity from ± 50 MHz to ± 100 MHz.
- Spherical isotropy (3D deviation from isotropy)**: in a field of low gradients realized using a flat phantom exposed by a patch antenna.
- Sensor Offset**: The sensor offset corresponds to the offset of virtual measurement center from the probe tip (on probe axis). No tolerance required.
- Connector Angle**: The angle is assessed using the information gained by determining the NORM_x (no uncertainty required).

EX3DV4 – SN:3710

March 4, 2014

Probe EX3DV4

SN:3710

Manufactured: July 21, 2009
Calibrated: March 4, 2014

Calibrated for DASY/EASY Systems
(Note: non-compatible with DASY2 system!)

EX3DV4- SN:3710

March 4, 2014

DASY/EASY - Parameters of Probe: EX3DV4 - SN:3710

Basic Calibration Parameters

| | Sensor X | Sensor Y | Sensor Z | Unc (k=2) |
|---|----------|----------|----------|-----------|
| Norm ($\mu\text{V}/(\text{V}/\text{m})^2$) ^A | 0.51 | 0.56 | 0.44 | ± 10.1 % |
| DCP (mV) ^B | 100.3 | 97.6 | 101.3 | |

Modulation Calibration Parameters

| UID | Communication System Name | | A dB | B dB $\sqrt{\mu\text{V}}$ | C | D dB | VR mV | Unc ^E (k=2) |
|-----|---------------------------|---|---------|------------------------------|-----|---------|----------|---------------------------|
| 0 | CW | X | 0.0 | 0.0 | 1.0 | 0.00 | 137.9 | ±3.5 % |
| | | Y | 0.0 | 0.0 | 1.0 | | 136.7 | |
| | | Z | 0.0 | 0.0 | 1.0 | | 139.8 | |

The reported uncertainty of measurement is stated as the standard uncertainty of measurement multiplied by the coverage factor k=2, which for a normal distribution corresponds to a coverage probability of approximately 95%.

^A The uncertainties of NormX,Y,Z do not affect the E²-field uncertainty inside TSL (see Pages 5 and 6).

^B Numerical linearization parameter; uncertainty not required.

^E Uncertainty is determined using the max. deviation from linear response applying rectangular distribution and is expressed for the square of the field value.

EX3DV4- SN:3710

March 4, 2014

DASY/EASY - Parameters of Probe: EX3DV4 - SN:3710

Calibration Parameter Determined in Head Tissue Simulating Media

| f (MHz) ^C | Relative Permittivity ^F | Conductivity (S/m) ^F | ConvF X | ConvF Y | ConvF Z | Alpha ^G | Depth ^G (mm) | Unct. (k=2) |
|----------------------|------------------------------------|---------------------------------|---------|---------|---------|--------------------|-------------------------|-------------|
| 450 | 43.5 | 0.87 | 10.42 | 10.42 | 10.42 | 0.17 | 2.22 | ± 13.3 % |
| 750 | 41.9 | 0.89 | 9.76 | 9.76 | 9.76 | 0.62 | 0.69 | ± 12.0 % |
| 835 | 41.5 | 0.90 | 9.56 | 9.56 | 9.56 | 0.57 | 0.69 | ± 12.0 % |
| 900 | 41.5 | 0.97 | 9.42 | 9.42 | 9.42 | 0.53 | 0.72 | ± 12.0 % |
| 1810 | 40.0 | 1.40 | 7.74 | 7.74 | 7.74 | 0.41 | 0.94 | ± 12.0 % |
| 1900 | 40.0 | 1.40 | 7.72 | 7.72 | 7.72 | 0.49 | 0.85 | ± 12.0 % |
| 2450 | 39.2 | 1.80 | 7.04 | 7.04 | 7.04 | 0.39 | 1.03 | ± 12.0 % |
| 2600 | 39.0 | 1.96 | 6.87 | 6.87 | 6.87 | 0.60 | 0.80 | ± 12.0 % |
| 3500 | 37.9 | 2.91 | 6.82 | 6.82 | 6.82 | 0.55 | 0.88 | ± 13.1 % |
| 5200 | 36.0 | 4.66 | 4.91 | 4.91 | 4.91 | 0.40 | 1.80 | ± 13.1 % |
| 5500 | 35.6 | 4.96 | 4.63 | 4.63 | 4.63 | 0.40 | 1.80 | ± 13.1 % |
| 5800 | 35.3 | 5.27 | 4.43 | 4.43 | 4.43 | 0.40 | 1.80 | ± 13.1 % |

^C Frequency validity of ± 100 MHz only applies for DASY v4.4 and higher (see Page 2), else it is restricted to ± 50 MHz. The uncertainty is the RSS of the ConvF uncertainty at calibration frequency and the uncertainty for the indicated frequency band.

^F At frequencies below 3 GHz, the validity of tissue parameters (ϵ and σ) can be relaxed to ± 10% if liquid compensation formula is applied to measured SAR values. At frequencies above 3 GHz, the validity of tissue parameters (ϵ and σ) is restricted to ± 5%. The uncertainty is the RSS of the ConvF uncertainty for indicated target tissue parameters.

^G Alpha/Depth are determined during calibration. SPEAG warrants that the remaining deviation due to the boundary effect after compensation is always less than ± 1% for frequencies below 3 GHz and below ± 2% for frequencies between 3-6 GHz at any distance larger than half the probe tip diameter from the boundary.

EX3DV4- SN:3710

March 4, 2014

DASY/EASY - Parameters of Probe: EX3DV4 - SN:3710

Calibration Parameter Determined in Body Tissue Simulating Media

| f (MHz) ^C | Relative Permittivity ^F | Conductivity (S/m) ^F | ConvF X | ConvF Y | ConvF Z | Alpha ^G | Depth ^G (mm) | Unct. (k=2) |
|----------------------|------------------------------------|---------------------------------|---------|---------|---------|--------------------|-------------------------|-------------|
| 450 | 56.7 | 0.94 | 10.53 | 10.53 | 10.53 | 0.10 | 1.00 | ± 13.3 % |
| 750 | 55.5 | 0.96 | 9.28 | 9.28 | 9.28 | 0.39 | 0.93 | ± 12.0 % |
| 835 | 55.2 | 0.97 | 9.22 | 9.22 | 9.22 | 0.65 | 0.72 | ± 12.0 % |
| 900 | 55.0 | 1.05 | 9.04 | 9.04 | 9.04 | 0.75 | 0.67 | ± 12.0 % |
| 1810 | 53.3 | 1.52 | 7.36 | 7.36 | 7.36 | 0.80 | 0.62 | ± 12.0 % |
| 1900 | 53.3 | 1.52 | 7.25 | 7.25 | 7.25 | 0.55 | 0.76 | ± 12.0 % |
| 2450 | 52.7 | 1.95 | 6.88 | 6.88 | 6.88 | 0.80 | 0.58 | ± 12.0 % |
| 2600 | 52.5 | 2.16 | 6.67 | 6.67 | 6.67 | 0.80 | 0.50 | ± 12.0 % |
| 3500 | 51.3 | 3.31 | 6.29 | 6.29 | 6.29 | 0.44 | 1.02 | ± 13.1 % |
| 5200 | 49.0 | 5.30 | 4.22 | 4.22 | 4.22 | 0.50 | 1.90 | ± 13.1 % |
| 5500 | 48.6 | 5.65 | 3.91 | 3.91 | 3.91 | 0.50 | 1.90 | ± 13.1 % |
| 5800 | 48.2 | 6.00 | 4.00 | 4.00 | 4.00 | 0.50 | 1.90 | ± 13.1 % |

^C Frequency validity of ± 100 MHz only applies for DASY v4.4 and higher (see Page 2), else it is restricted to ± 50 MHz. The uncertainty is the RSS of the ConvF uncertainty at calibration frequency and the uncertainty for the indicated frequency band.

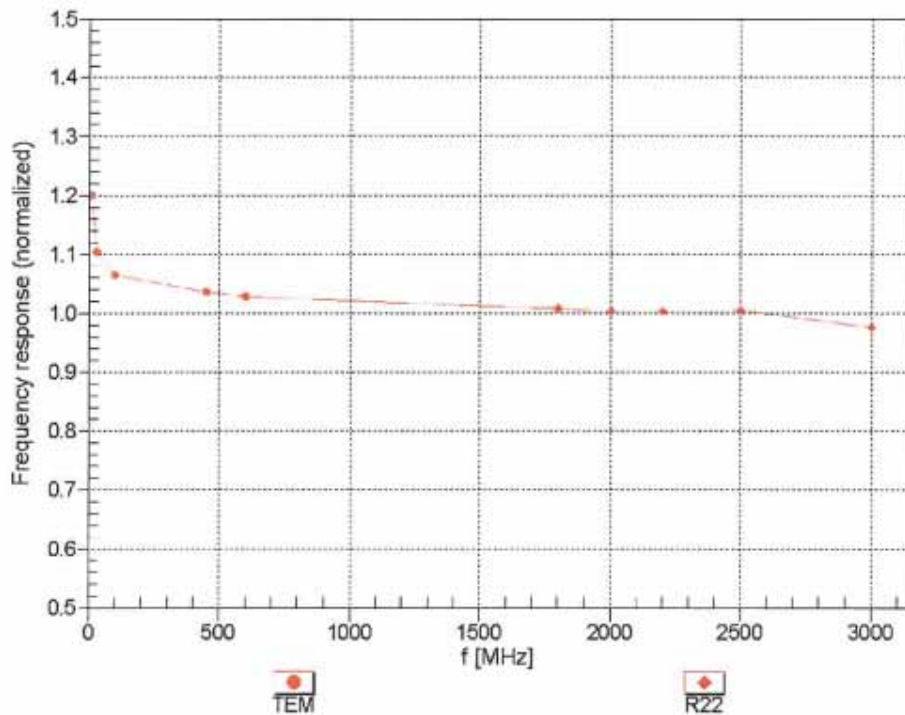
^F At frequencies below 3 GHz, the validity of tissue parameters (ϵ and σ) can be relaxed to ± 10% if liquid compensation formula is applied to measured SAR values. At frequencies above 3 GHz, the validity of tissue parameters (ϵ and σ) is restricted to ± 5%. The uncertainty is the RSS of the ConvF uncertainty for indicated target tissue parameters.

^G Alpha/Depth are determined during calibration. SPEAG warrants that the remaining deviation due to the boundary effect after compensation is always less than ± 1% for frequencies below 3 GHz and below ± 2% for frequencies between 3-6 GHz at any distance larger than half the probe tip diameter from the boundary.

EX3DV4-SN:3710

March 4, 2014

Frequency Response of E-Field (TEM-Cell:ifi110 EXX, Waveguide: R22)



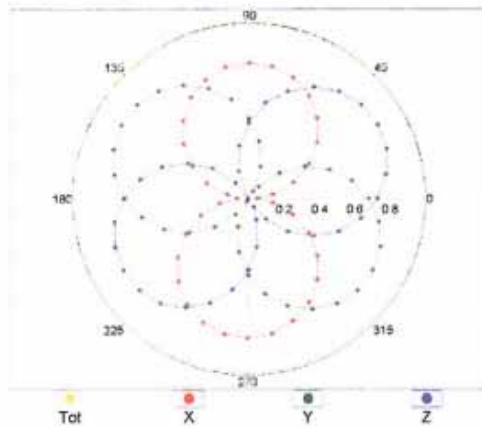
Uncertainty of Frequency Response of E-field: $\pm 6.3\%$ ($k=2$)

EX3DV4- SN:3710

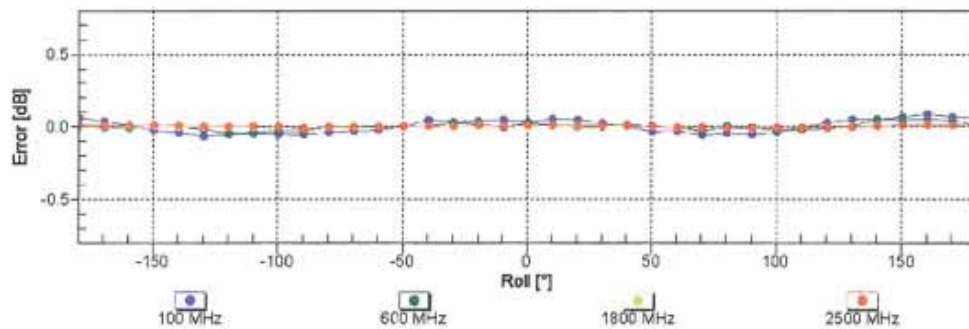
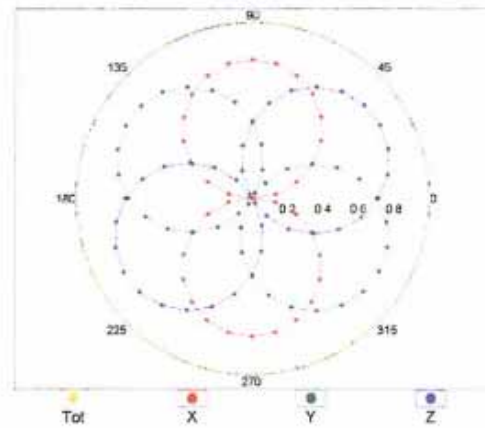
March 4, 2014

Receiving Pattern (ϕ), $\theta = 0^\circ$

f=600 MHz,TEM



f=1800 MHz,R22

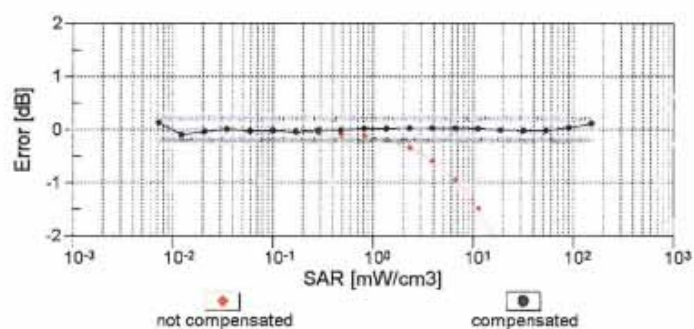
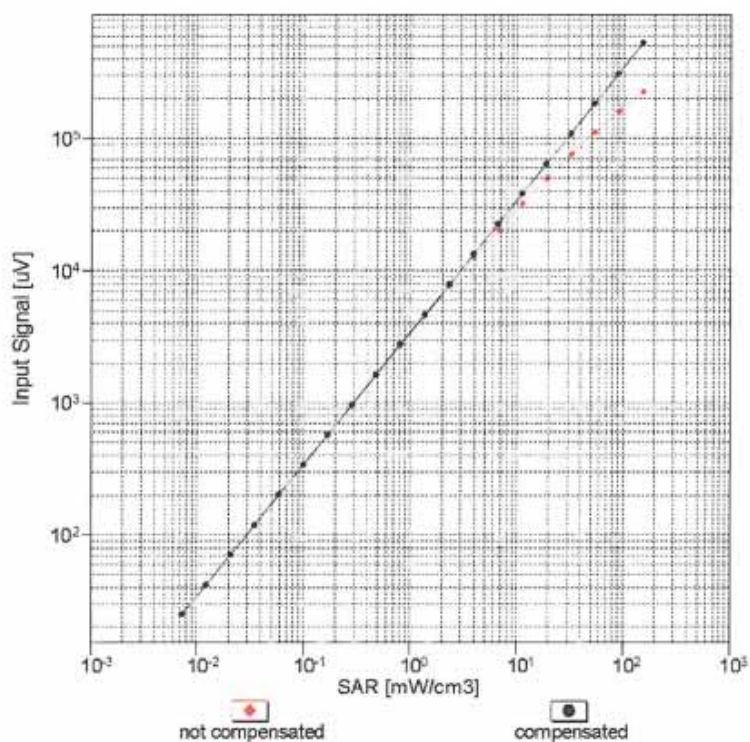


Uncertainty of Axial Isotropy Assessment: $\pm 0.5\%$ ($k=2$)

EX3DV4- SN:3710

March 4, 2014

Dynamic Range $f(\text{SAR}_{\text{head}})$ (TEM cell, $f_{\text{eval}} = 1900 \text{ MHz}$)

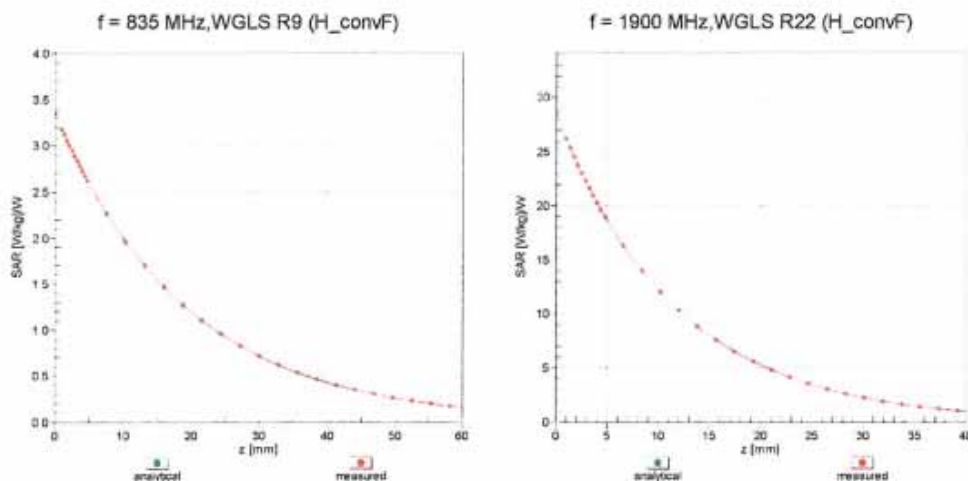


Uncertainty of Linearity Assessment: $\pm 0.6\%$ ($k=2$)

EX3DV4- SN:3710

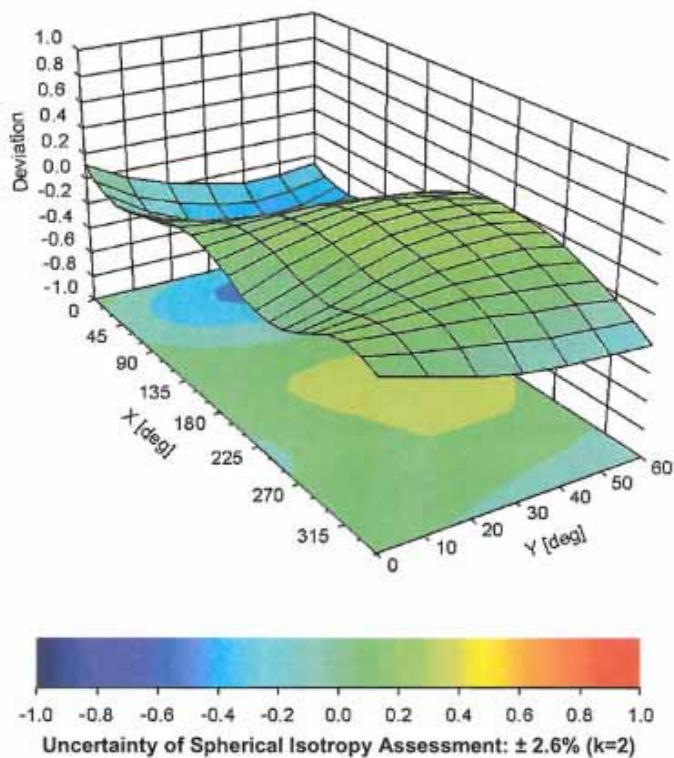
March 4, 2014

Conversion Factor Assessment



Deviation from Isotropy in Liquid

Error (ϕ , θ), f = 900 MHz



EX3DV4- SN:3710

March 4, 2014

DASY/EASY - Parameters of Probe: EX3DV4 - SN:3710

Other Probe Parameters

| | |
|---|------------|
| Sensor Arrangement | Triangular |
| Connector Angle (°) | -19.6 |
| Mechanical Surface Detection Mode | enabled |
| Optical Surface Detection Mode | disabled |
| Probe Overall Length | 337 mm |
| Probe Body Diameter | 10 mm |
| Tip Length | 9 mm |
| Tip Diameter | 2.5 mm |
| Probe Tip to Sensor X Calibration Point | 1 mm |
| Probe Tip to Sensor Y Calibration Point | 1 mm |
| Probe Tip to Sensor Z Calibration Point | 1 mm |
| Recommended Measurement Distance from Surface | 2 mm |

Appendix E. Dipole Calibration Data

Calibration Laboratory of
Schmid & Partner
Engineering AG
Zeughausstrasse 43, 8004 Zurich, Switzerland



S Schweizerischer Kalibrierdienst
C Service suisse d'étalonnage
S Servizio svizzero di taratura
S Swiss Calibration Service

Accredited by the Swiss Accreditation Service (SAS)
The Swiss Accreditation Service is one of the signatories to the EA
Multilateral Agreement for the recognition of calibration certificates

Accreditation No.: SCS 108

Client **Quietek-CN (Auden)**

Certificate No: D835V2-4d094_Feb14

CALIBRATION CERTIFICATE

Object **D835V2 - SN: 4d094**

Calibration procedure(s) **QA CAL-05.v9**
Calibration procedure for dipole validation kits above 700 MHz

Calibration date: **February 27, 2014**

This calibration certificate documents the traceability to national standards, which realize the physical units of measurements (SI).
The measurements and the uncertainties with confidence probability are given on the following pages and are part of the certificate.

All calibrations have been conducted in the closed laboratory facility: environment temperature $(22 \pm 3)^\circ\text{C}$ and humidity $< 70\%$.

Calibration Equipment used (M&TE critical for calibration)

| Primary Standards | ID # | Cal Date (Certificate No.) | Scheduled Calibration |
|-----------------------------|--------------------|-----------------------------------|------------------------|
| Power meter EPM-442A | GB37480704 | 09-Oct-13 (No. 217-01827) | Oct-14 |
| Power sensor HP 8481A | US37292783 | 09-Oct-13 (No. 217-01827) | Oct-14 |
| Power sensor HP 8481A | MY41092317 | 09-Oct-13 (No. 217-01828) | Oct-14 |
| Reference 20 dB Attenuator | SN: 5058 (20k) | 04-Apr-13 (No. 217-01736) | Apr-14 |
| Type-N mismatch combination | SN: 5047.3 / 06327 | 04-Apr-13 (No. 217-01739) | Apr-14 |
| Reference Probe ES3DV3 | SN: 3205 | 30-Dec-13 (No. ES3-3205_Dec13) | Dec-14 |
| DAE4 | SN: 601 | 25-Apr-13 (No. DAE4-601_Apr13) | Apr-14 |
| Secondary Standards | ID # | Check Date (in house) | Scheduled Check |
| RF generator R&S SMT-06 | 100005 | 04-Aug-99 (in house check Oct-13) | In house check: Oct-16 |
| Network Analyzer HP 8753E | US37390585 S4206 | 18-Oct-01 (in house check Oct-13) | In house check: Oct-14 |

| | | | |
|----------------|----------------|-----------------------|-----------|
| | Name | Function | Signature |
| Calibrated by: | Jeton Kastrati | Laboratory Technician | |
| Approved by: | Katja Pokovic | Technical Manager | |

Issued: February 28, 2014

This calibration certificate shall not be reproduced except in full without written approval of the laboratory.

Calibration Laboratory of
Schmid & Partner
Engineering AG
Zeughausstrasse 43, 8004 Zurich, Switzerland



S Schweizerischer Kalibrierdienst
C Service suisse d'étalonnage
S Servizio svizzero di taratura
S Swiss Calibration Service

Accredited by the Swiss Accreditation Service (SAS)
The Swiss Accreditation Service is one of the signatories to the EA
Multilateral Agreement for the recognition of calibration certificates

Accreditation No.: **SCS 108**

Glossary:

| | |
|-------|---------------------------------|
| TSL | tissue simulating liquid |
| ConvF | sensitivity in TSL / NORM x,y,z |
| N/A | not applicable or not measured |

Calibration is Performed According to the Following Standards:

- IEEE Std 1528-2013, "IEEE Recommended Practice for Determining the Peak Spatial-Averaged Specific Absorption Rate (SAR) in the Human Head from Wireless Communications Devices: Measurement Techniques", June 2013
- IEC 62209-1, "Procedure to measure the Specific Absorption Rate (SAR) for hand-held devices used in close proximity to the ear (frequency range of 300 MHz to 3 GHz)", February 2005
- KDB 865664, "SAR Measurement Requirements for 100 MHz to 6 GHz"

Additional Documentation:

- DASY4/5 System Handbook

Methods Applied and Interpretation of Parameters:

- Measurement Conditions:** Further details are available from the Validation Report at the end of the certificate. All figures stated in the certificate are valid at the frequency indicated.
- Antenna Parameters with TSL:** The dipole is mounted with the spacer to position its feed point exactly below the center marking of the flat phantom section, with the arms oriented parallel to the body axis.
- Feed Point Impedance and Return Loss:** These parameters are measured with the dipole positioned under the liquid filled phantom. The impedance stated is transformed from the measurement at the SMA connector to the feed point. The Return Loss ensures low reflected power. No uncertainty required.
- Electrical Delay:** One-way delay between the SMA connector and the antenna feed point. No uncertainty required.
- SAR measured:** SAR measured at the stated antenna input power.
- SAR normalized:** SAR as measured, normalized to an input power of 1 W at the antenna connector.
- SAR for nominal TSL parameters:** The measured TSL parameters are used to calculate the nominal SAR result.

The reported uncertainty of measurement is stated as the standard uncertainty of measurement multiplied by the coverage factor $k=2$, which for a normal distribution corresponds to a coverage probability of approximately 95%.

Measurement Conditions

DASY system configuration, as far as not given on page 1.

| | | |
|------------------------------|------------------------|-------------|
| DASY Version | DASY5 | V52.8.7 |
| Extrapolation | Advanced Extrapolation | |
| Phantom | Modular Flat Phantom | |
| Distance Dipole Center - TSL | 15 mm | with Spacer |
| Zoom Scan Resolution | dx, dy, dz = 5 mm | |
| Frequency | 835 MHz \pm 1 MHz | |

Head TSL parameters

The following parameters and calculations were applied.

| | Temperature | Permittivity | Conductivity |
|---|---------------------|----------------|----------------------|
| Nominal Head TSL parameters | 22.0 °C | 41.5 | 0.90 mho/m |
| Measured Head TSL parameters | (22.0 \pm 0.2) °C | 40.5 \pm 6 % | 0.93 mho/m \pm 6 % |
| Head TSL temperature change during test | < 0.5 °C | ---- | ---- |

SAR result with Head TSL

| SAR averaged over 1 cm ³ (1 g) of Head TSL | Condition | |
|---|--------------------|------------------------------|
| SAR measured | 250 mW input power | 2.47 W/kg |
| SAR for nominal Head TSL parameters | normalized to 1W | 9.59 W/kg \pm 17.0 % (k=2) |

| SAR averaged over 10 cm ³ (10 g) of Head TSL | condition | |
|---|--------------------|------------------------------|
| SAR measured | 250 mW input power | 1.59 W/kg |
| SAR for nominal Head TSL parameters | normalized to 1W | 6.21 W/kg \pm 16.5 % (k=2) |

Body TSL parameters

The following parameters and calculations were applied.

| | Temperature | Permittivity | Conductivity |
|---|---------------------|----------------|----------------------|
| Nominal Body TSL parameters | 22.0 °C | 55.2 | 0.97 mho/m |
| Measured Body TSL parameters | (22.0 \pm 0.2) °C | 54.0 \pm 6 % | 1.00 mho/m \pm 6 % |
| Body TSL temperature change during test | < 0.5 °C | ---- | ---- |

SAR result with Body TSL

| SAR averaged over 1 cm ³ (1 g) of Body TSL | Condition | |
|---|--------------------|------------------------------|
| SAR measured | 250 mW input power | 2.42 W/kg |
| SAR for nominal Body TSL parameters | normalized to 1W | 9.42 W/kg \pm 17.0 % (k=2) |

| SAR averaged over 10 cm ³ (10 g) of Body TSL | condition | |
|---|--------------------|------------------------------|
| SAR measured | 250 mW input power | 1.57 W/kg |
| SAR for nominal Body TSL parameters | normalized to 1W | 6.15 W/kg \pm 16.5 % (k=2) |

Appendix

Antenna Parameters with Head TSL

| | |
|--------------------------------------|--------------------------------|
| Impedance, transformed to feed point | 51.4 Ω - 2.8 j Ω |
| Return Loss | - 30.2 dB |

Antenna Parameters with Body TSL

| | |
|--------------------------------------|--------------------------------|
| Impedance, transformed to feed point | 46.9 Ω - 5.0 j Ω |
| Return Loss | - 24.3 dB |

General Antenna Parameters and Design

| | |
|----------------------------------|----------|
| Electrical Delay (one direction) | 1.386 ns |
|----------------------------------|----------|

After long term use with 100W radiated power, only a slight warming of the dipole near the feedpoint can be measured.

The dipole is made of standard semirigid coaxial cable. The center conductor of the feeding line is directly connected to the second arm of the dipole. The antenna is therefore short-circuited for DC-signals. On some of the dipoles, small end caps are added to the dipole arms in order to improve matching when loaded according to the position as explained in the "Measurement Conditions" paragraph. The SAR data are not affected by this change. The overall dipole length is still according to the Standard.

No excessive force must be applied to the dipole arms, because they might bend or the soldered connections near the feedpoint may be damaged.

Additional EUT Data

| | |
|-----------------|--------------------|
| Manufactured by | SPEAG |
| Manufactured on | September 15, 2009 |

DASY5 Validation Report for Head TSL

Date: 27.02.2014

Test Laboratory: SPEAG, Zurich, Switzerland

DUT: Dipole 835 MHz; Type: D835V2; Serial: D835V2 - SN: 4d094

Communication System: UID 0 - CW; Frequency: 835 MHz

Medium parameters used: $f = 835 \text{ MHz}$; $\sigma = 0.93 \text{ S/m}$; $\epsilon_r = 40.5$; $\rho = 1000 \text{ kg/m}^3$

Phantom section: Flat Section

Measurement Standard: DASY5 (IEEE/IEC/ANSI C63.19-2007)

DASY52 Configuration:

- Probe: ES3DV3 - SN3205; ConvF(6.22, 6.22, 6.22); Calibrated: 30.12.2013;
- Sensor-Surface: 3mm (Mechanical Surface Detection)
- Electronics: DAE4 Sn601; Calibrated: 25.04.2013
- Phantom: Flat Phantom 4.9L; Type: QD000P49AA; Serial: 1001
- DASY52 52.8.7(1137); SEMCAD X 14.6.10(7164)

Dipole Calibration for Head Tissue/Pin=250 mW, d=15mm/Zoom Scan (7x7x7)/Cube 0:

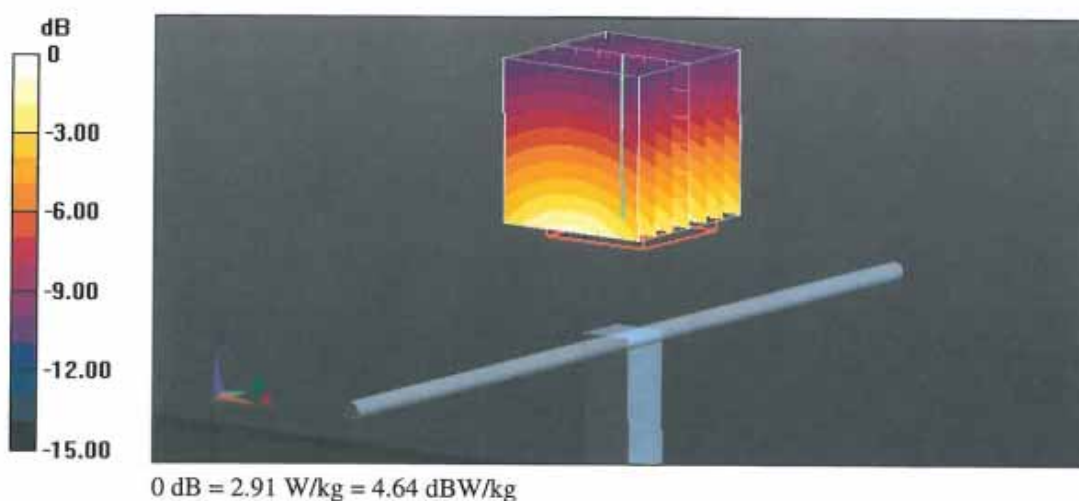
Measurement grid: dx=5mm, dy=5mm, dz=5mm

Reference Value = 59.179 V/m; Power Drift = -0.01 dB

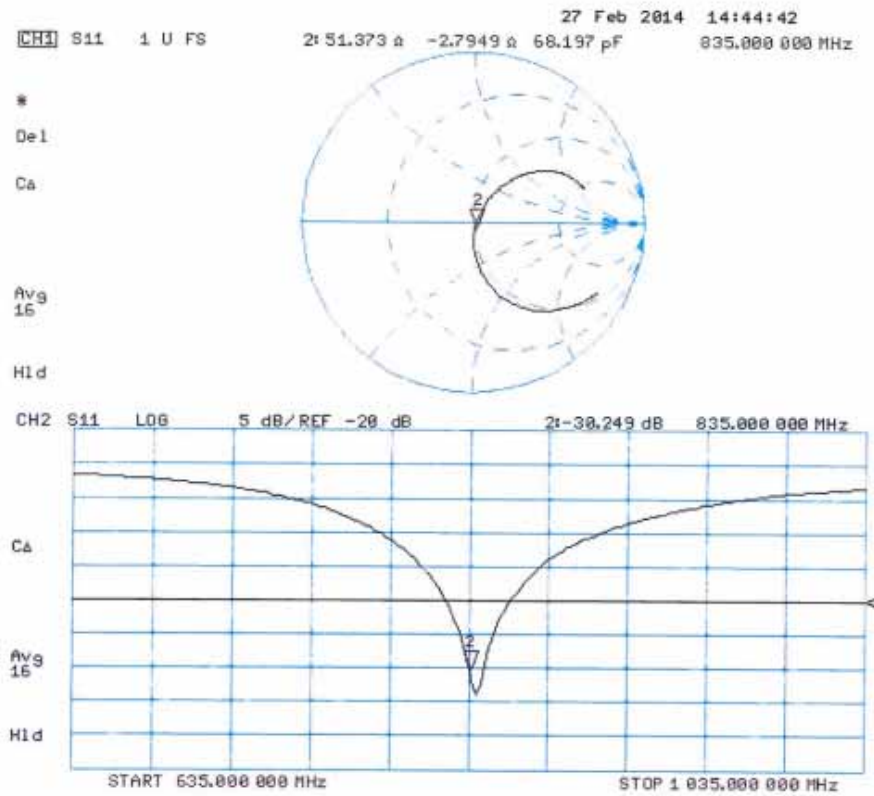
Peak SAR (extrapolated) = 3.80 W/kg

SAR(1 g) = 2.47 W/kg; SAR(10 g) = 1.59 W/kg

Maximum value of SAR (measured) = 2.91 W/kg



Impedance Measurement Plot for Head TSL



DASY5 Validation Report for Body TSL

Date: 27.02.2014

Test Laboratory: SPEAG, Zurich, Switzerland

DUT: Dipole 835 MHz; Type: D835V2; Serial: D835V2 - SN: 4d094

Communication System: UID 0 - CW; Frequency: 835 MHz

Medium parameters used: $f = 835 \text{ MHz}$; $\sigma = 1 \text{ S/m}$; $\epsilon_r = 54$; $\rho = 1000 \text{ kg/m}^3$

Phantom section: Flat Section

Measurement Standard: DASY5 (IEEE/IEC/ANSI C63.19-2007)

DASY52 Configuration:

- Probe: ES3DV3 - SN3205; ConvF(6.09, 6.09, 6.09); Calibrated: 30.12.2013;
- Sensor-Surface: 3mm (Mechanical Surface Detection)
- Electronics: DAE4 Sn601; Calibrated: 25.04.2013
- Phantom: Flat Phantom 4.9L; Type: QD000P49AA; Serial: 1001
- DASY52 52.8.7(1137); SEMCAD X 14.6.10(7164)

Dipole Calibration for Body Tissue/Pin=250 mW, d=15mm/Zoom Scan (7x7x7)/Cube 0:

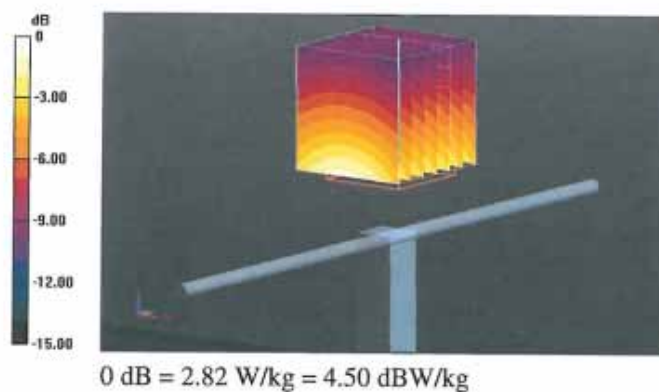
Measurement grid: $dx=5\text{mm}$, $dy=5\text{mm}$, $dz=5\text{mm}$

Reference Value = 55.012 V/m; Power Drift = 0.01 dB

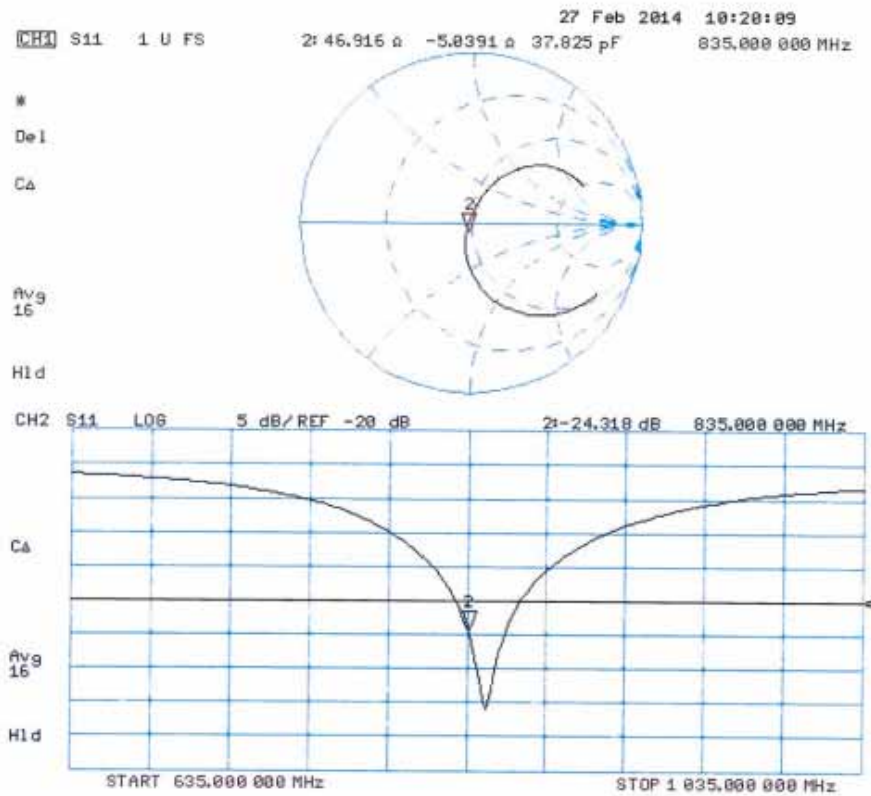
Peak SAR (extrapolated) = 3.62 W/kg

SAR(1 g) = 2.42 W/kg; SAR(10 g) = 1.57 W/kg

Maximum value of SAR (measured) = 2.82 W/kg



Impedance Measurement Plot for Body TSL



Calibration Laboratory of
Schmid & Partner
Engineering AG
Zeughausstrasse 43, 8004 Zurich, Switzerland



S Schweizerischer Kalibrierdienst
C Service suisse d'étalonnage
S Servizio svizzero di taratura
S Swiss Calibration Service

Accredited by the Swiss Accreditation Service (SAS)
The Swiss Accreditation Service is one of the signatories to the EA
Multilateral Agreement for the recognition of calibration certificates

Accreditation No.: **SCS 108**

Client **Quitek-CN (Auden)**

Certificate No: **D1900V2-5d121_Feb14**

CALIBRATION CERTIFICATE

Object **D1900V2 - SN: 5d121**

Calibration procedure(s) **QA CAL-05.v9**
Calibration procedure for dipole validation kits above 700 MHz

Calibration date: **February 27, 2014**

This calibration certificate documents the traceability to national standards, which realize the physical units of measurements (SI).
The measurements and the uncertainties with confidence probability are given on the following pages and are part of the certificate.

All calibrations have been conducted in the closed laboratory facility: environment temperature $(22 \pm 3)^{\circ}\text{C}$ and humidity $< 70\%$.

Calibration Equipment used (M&TE critical for calibration)

| Primary Standards | ID # | Cal Date (Certificate No.) | Scheduled Calibration |
|-----------------------------|--------------------|-----------------------------------|------------------------|
| Power meter EPM-442A | GB37480704 | 09-Oct-13 (No. 217-01827) | Oct-14 |
| Power sensor HP 8481A | US37292783 | 09-Oct-13 (No. 217-01827) | Oct-14 |
| Power sensor HP 8481A | MY41092317 | 09-Oct-13 (No. 217-01828) | Oct-14 |
| Reference 20 dB Attenuator | SN: 5058 (20k) | 04-Apr-13 (No. 217-01736) | Apr-14 |
| Type-N mismatch combination | SN: 5047.3 / 06327 | 04-Apr-13 (No. 217-01739) | Apr-14 |
| Reference Probe ES3DV3 | SN: 3205 | 30-Dec-13 (No. ES3-3205_Dec13) | Dec-14 |
| DAE4 | SN: 601 | 25-Apr-13 (No. DAE4-601_Apr13) | Apr-14 |
| Secondary Standards | ID # | Check Date (in house) | Scheduled Check |
| RF generator R&S SMT-06 | 100005 | 04-Aug-99 (in house check Oct-13) | In house check: Oct-16 |
| Network Analyzer HP 8753E | US37390585 S4206 | 18-Oct-01 (in house check Oct-13) | In house check: Oct-14 |

| | | | |
|----------------|-------------------------------|--|---------------|
| Calibrated by: | Name Jeton Kastrati | Function Laboratory Technician | Signature |
| Approved by: | Name Katja Pokovic | Function Technical Manager | Signature |

Issued: February 28, 2014

This calibration certificate shall not be reproduced except in full without written approval of the laboratory.

Calibration Laboratory of
Schmid & Partner
Engineering AG
 Zeughausstrasse 43, 8004 Zurich, Switzerland



S Schweizerischer Kalibrierdienst
C Service suisse d'étalonnage
S Servizio svizzero di taratura
S Swiss Calibration Service

Accredited by the Swiss Accreditation Service (SAS)
 The Swiss Accreditation Service is one of the signatories to the EA
 Multilateral Agreement for the recognition of calibration certificates

Accreditation No.: **SCS 108**

Glossary:

| | |
|-------|---------------------------------|
| TSL | tissue simulating liquid |
| ConvF | sensitivity in TSL / NORM x,y,z |
| N/A | not applicable or not measured |

Calibration is Performed According to the Following Standards:

- IEEE Std 1528-2013, "IEEE Recommended Practice for Determining the Peak Spatial-Averaged Specific Absorption Rate (SAR) in the Human Head from Wireless Communications Devices: Measurement Techniques", June 2013
- IEC 62209-1, "Procedure to measure the Specific Absorption Rate (SAR) for hand-held devices used in close proximity to the ear (frequency range of 300 MHz to 3 GHz)", February 2005
- KDB 865664, "SAR Measurement Requirements for 100 MHz to 6 GHz"

Additional Documentation:

- DASY4/5 System Handbook

Methods Applied and Interpretation of Parameters:

- Measurement Conditions:** Further details are available from the Validation Report at the end of the certificate. All figures stated in the certificate are valid at the frequency indicated.
- Antenna Parameters with TSL:** The dipole is mounted with the spacer to position its feed point exactly below the center marking of the flat phantom section, with the arms oriented parallel to the body axis.
- Feed Point Impedance and Return Loss:** These parameters are measured with the dipole positioned under the liquid filled phantom. The impedance stated is transformed from the measurement at the SMA connector to the feed point. The Return Loss ensures low reflected power. No uncertainty required.
- Electrical Delay:** One-way delay between the SMA connector and the antenna feed point. No uncertainty required.
- SAR measured:** SAR measured at the stated antenna input power.
- SAR normalized:** SAR as measured, normalized to an input power of 1 W at the antenna connector.
- SAR for nominal TSL parameters:** The measured TSL parameters are used to calculate the nominal SAR result.

The reported uncertainty of measurement is stated as the standard uncertainty of measurement multiplied by the coverage factor $k=2$, which for a normal distribution corresponds to a coverage probability of approximately 95%.

Measurement Conditions

DASY system configuration, as far as not given on page 1.

| | | |
|------------------------------|------------------------|-------------|
| DASY Version | DASY5 | V52.8.7 |
| Extrapolation | Advanced Extrapolation | |
| Phantom | Modular Flat Phantom | |
| Distance Dipole Center - TSL | 10 mm | with Spacer |
| Zoom Scan Resolution | dx, dy, dz = 5 mm | |
| Frequency | 1900 MHz \pm 1 MHz | |

Head TSL parameters

The following parameters and calculations were applied.

| | Temperature | Permittivity | Conductivity |
|---|---------------------|----------------|----------------------|
| Nominal Head TSL parameters | 22.0 °C | 40.0 | 1.40 mho/m |
| Measured Head TSL parameters | (22.0 \pm 0.2) °C | 38.9 \pm 6 % | 1.39 mho/m \pm 6 % |
| Head TSL temperature change during test | < 0.5 °C | ---- | ---- |

SAR result with Head TSL

| SAR averaged over 1 cm ³ (1 g) of Head TSL | Condition | |
|---|--------------------|------------------------------|
| SAR measured | 250 mW input power | 10.3 W/kg |
| SAR for nominal Head TSL parameters | normalized to 1W | 41.1 W/kg \pm 17.0 % (k=2) |

| SAR averaged over 10 cm ³ (10 g) of Head TSL | condition | |
|---|--------------------|------------------------------|
| SAR measured | 250 mW input power | 5.34 W/kg |
| SAR for nominal Head TSL parameters | normalized to 1W | 21.3 W/kg \pm 16.5 % (k=2) |

Body TSL parameters

The following parameters and calculations were applied.

| | Temperature | Permittivity | Conductivity |
|---|---------------------|----------------|----------------------|
| Nominal Body TSL parameters | 22.0 °C | 53.3 | 1.52 mho/m |
| Measured Body TSL parameters | (22.0 \pm 0.2) °C | 52.8 \pm 6 % | 1.49 mho/m \pm 6 % |
| Body TSL temperature change during test | < 0.5 °C | ---- | ---- |

SAR result with Body TSL

| SAR averaged over 1 cm ³ (1 g) of Body TSL | Condition | |
|---|--------------------|------------------------------|
| SAR measured | 250 mW input power | 9.83 W/kg |
| SAR for nominal Body TSL parameters | normalized to 1W | 39.7 W/kg \pm 17.0 % (k=2) |

| SAR averaged over 10 cm ³ (10 g) of Body TSL | condition | |
|---|--------------------|------------------------------|
| SAR measured | 250 mW input power | 5.20 W/kg |
| SAR for nominal Body TSL parameters | normalized to 1W | 20.9 W/kg \pm 16.5 % (k=2) |

Appendix

Antenna Parameters with Head TSL

| | |
|--------------------------------------|--------------------------------|
| Impedance, transformed to feed point | 50.8 Ω + 6.6 j Ω |
| Return Loss | - 23.6 dB |

Antenna Parameters with Body TSL

| | |
|--------------------------------------|--------------------------------|
| Impedance, transformed to feed point | 46.3 Ω + 7.2 j Ω |
| Return Loss | - 21.6 dB |

General Antenna Parameters and Design

| | |
|----------------------------------|----------|
| Electrical Delay (one direction) | 1.202 ns |
|----------------------------------|----------|

After long term use with 100W radiated power, only a slight warming of the dipole near the feedpoint can be measured.

The dipole is made of standard semirigid coaxial cable. The center conductor of the feeding line is directly connected to the second arm of the dipole. The antenna is therefore short-circuited for DC-signals. On some of the dipoles, small end caps are added to the dipole arms in order to improve matching when loaded according to the position as explained in the "Measurement Conditions" paragraph. The SAR data are not affected by this change. The overall dipole length is still according to the Standard.

No excessive force must be applied to the dipole arms, because they might bend or the soldered connections near the feedpoint may be damaged.

Additional EUT Data

| | |
|-----------------|-----------------|
| Manufactured by | SPEAG |
| Manufactured on | August 25, 2009 |

DASY5 Validation Report for Head TSL

Date: 27.02.2014

Test Laboratory: SPEAG, Zurich, Switzerland

DUT: Dipole 1900 MHz; Type: D1900V2; Serial: D1900V2 - SN: 5d121

Communication System: UID 0 - CW; Frequency: 1900 MHz

Medium parameters used: $f = 1900$ MHz; $\sigma = 1.39$ S/m; $\epsilon_r = 38.9$; $\rho = 1000$ kg/m³

Phantom section: Flat Section

Measurement Standard: DASY5 (IEEE/IEC/ANSI C63.19-2007)

DASY52 Configuration:

- Probe: ES3DV3 - SN3205; ConvF(5.06, 5.06, 5.06); Calibrated: 30.12.2013;
- Sensor-Surface: 3mm (Mechanical Surface Detection)
- Electronics: DAE4 Sn601; Calibrated: 25.04.2013
- Phantom: Flat Phantom 5.0 (front); Type: QD000P50AA; Serial: 1001
- DASY52 52.8.7(1137); SEMCAD X 14.6.10(7164)

Dipole Calibration for Head Tissue/Pin=250 mW, d=10mm/Zoom Scan (7x7x7)/Cube 0:

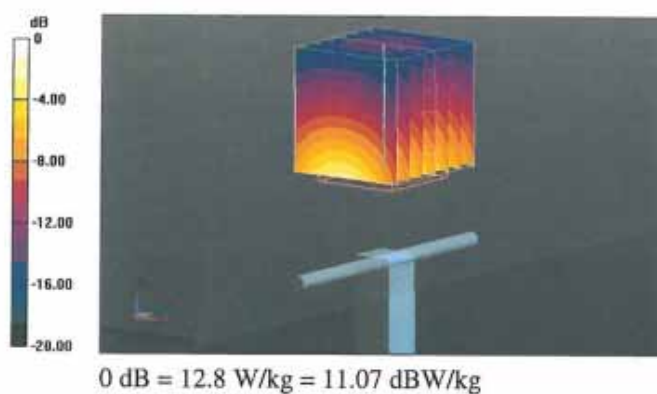
Measurement grid: dx=5mm, dy=5mm, dz=5mm

Reference Value = 98.487 V/m; Power Drift = 0.04 dB

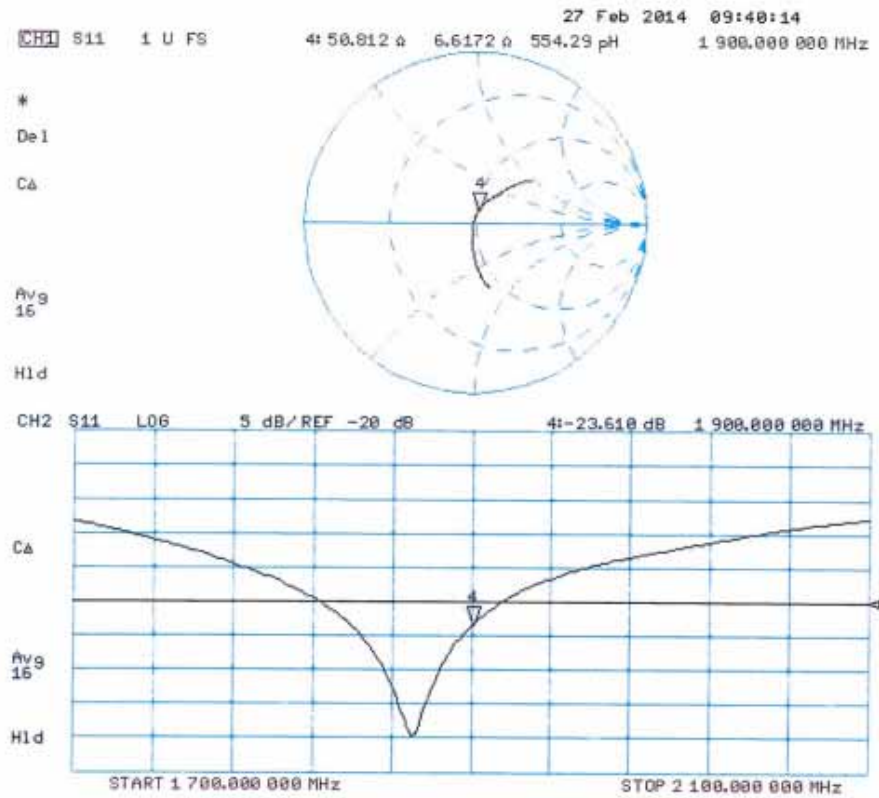
Peak SAR (extrapolated) = 19.0 W/kg

SAR(1 g) = 10.3 W/kg; SAR(10 g) = 5.34 W/kg

Maximum value of SAR (measured) = 12.8 W/kg



Impedance Measurement Plot for Head TSL



DASY5 Validation Report for Body TSL

Date: 27.02.2014

Test Laboratory: SPEAG, Zurich, Switzerland

DUT: Dipole 1900 MHz; Type: D1900V2; Serial: D1900V2 - SN: 5d121

Communication System: UID 0 - CW; Frequency: 1900 MHz

Medium parameters used: $f = 1900$ MHz; $\sigma = 1.49$ S/m; $\epsilon_r = 52.8$; $\rho = 1000$ kg/m³

Phantom section: Flat Section

Measurement Standard: DASY5 (IEEE/IEC/ANSI C63.19-2007)

DASY52 Configuration:

- Probe: ES3DV3 - SN3205; ConvF(4.76, 4.76, 4.76); Calibrated: 30.12.2013;
- Sensor-Surface: 3mm (Mechanical Surface Detection)
- Electronics: DAE4 Sn601; Calibrated: 25.04.2013
- Phantom: Flat Phantom 5.0 (back); Type: QD000P50AA; Serial: 1002
- DASY52 52.8.7(1137); SEMCAD X 14.6.10(7164)

Dipole Calibration for Body Tissue/Pin=250 mW, d=10mm/Zoom Scan (7x7x7)/Cube 0:

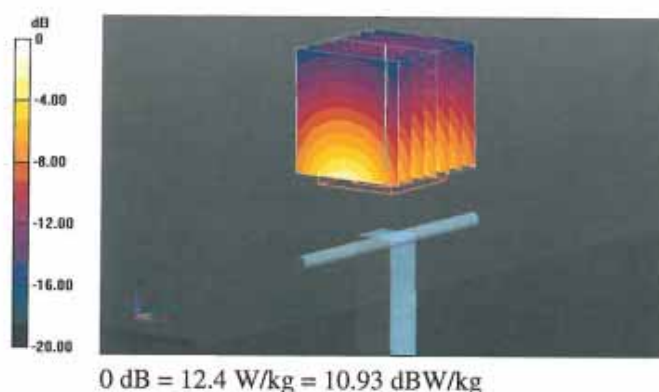
Measurement grid: dx=5mm, dy=5mm, dz=5mm

Reference Value = 95.066 V/m; Power Drift = -0.01 dB

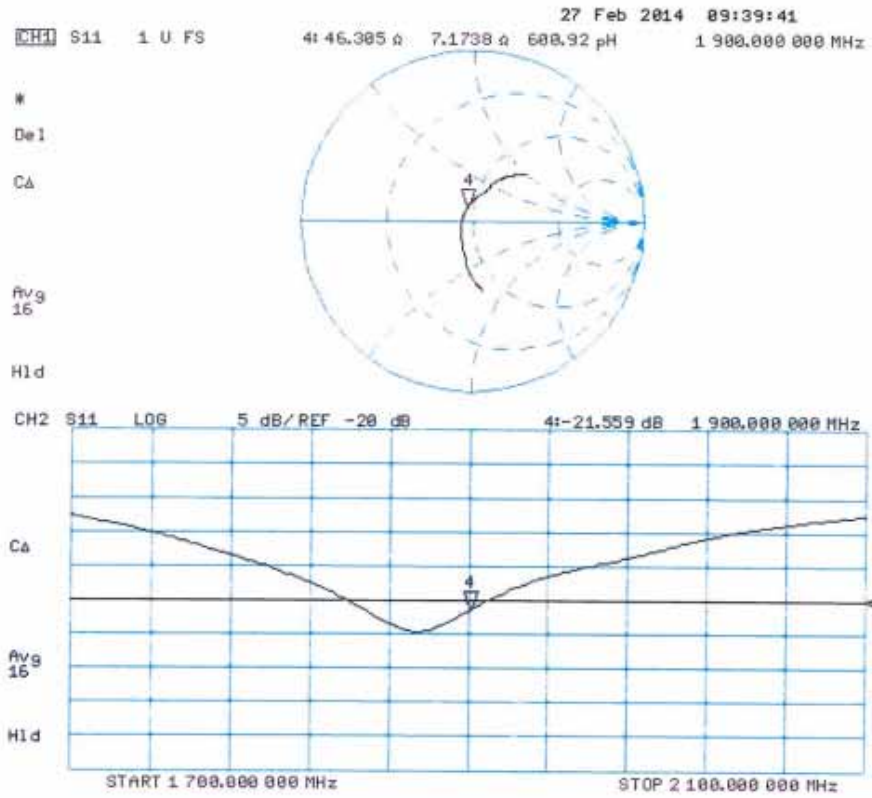
Peak SAR (extrapolated) = 17.1 W/kg

SAR(1 g) = 9.83 W/kg; SAR(10 g) = 5.2 W/kg

Maximum value of SAR (measured) = 12.4 W/kg



Impedance Measurement Plot for Body TSL



Appendix F. DAE Calibration Data

Calibration Laboratory of
Schmid & Partner
Engineering AG
Zeughausstrasse 43, 8004 Zurich, Switzerland



S Schweizerischer Kalibrierdienst
C Service suisse d'étalonnage
S Servizio svizzero di taratura
S Swiss Calibration Service

Accredited by the Swiss Accreditation Service (SAS)
The Swiss Accreditation Service is one of the signatories to the EA
Multilateral Agreement for the recognition of calibration certificates

Accreditation No.: SCS 108

Client **Quietek-CN (Auden)**

Certificate No: DAE4-1220_Jan14

CALIBRATION CERTIFICATE

Object DAE4 - SD 000 D04 BM - SN: 1220

Calibration procedure(s) QA CAL-06.v26
Calibration procedure for the data acquisition electronics (DAE)

Calibration date: January 22, 2014

This calibration certificate documents the traceability to national standards, which realize the physical units of measurements (SI).
The measurements and the uncertainties with confidence probability are given on the following pages and are part of the certificate.

All calibrations have been conducted in the closed laboratory facility: environment temperature $(22 \pm 3)^{\circ}\text{C}$ and humidity $< 70\%$.

Calibration Equipment used (M&TE critical for calibration)

| Primary Standards | ID # | Cal Date (Certificate No.) | Scheduled Calibration |
|-------------------------------|--------------------|----------------------------|------------------------|
| Keithley Multimeter Type 2001 | SN: 0810278 | 01-Oct-13 (No:13976) | Oct-14 |
| Secondary Standards | ID # | Check Date (in house) | Scheduled Check |
| Auto DAE Calibration Unit | SE UWS 053 AA 1001 | 07-Jan-14 (in house check) | In house check: Jan-15 |
| Calibrator Box V2.1 | SE UMS 006 AA 1002 | 07-Jan-14 (in house check) | In house check: Jan-15 |

| | | | |
|----------------|-------------------|--------------------------|---------------|
| Calibrated by: | Name R.Mayoraz | Function Technician | Signature |
| Approved by: | Fin Bomholt | Deputy Technical Manager | |

Issued: January 22, 2014

This calibration certificate shall not be reproduced except in full without written approval of the laboratory.

Calibration Laboratory of
Schmid & Partner
Engineering AG
 Zeughausstrasse 43, 8004 Zurich, Switzerland



S Schweizerischer Kalibrierdienst
C Service suisse d'étalonnage
S Servizio svizzero di taratura
S Swiss Calibration Service

Accredited by the Swiss Accreditation Service (SAS)
 The Swiss Accreditation Service is one of the signatories to the EA
 Multilateral Agreement for the recognition of calibration certificates

Accreditation No.: **SCS 108**

Glossary

DAE data acquisition electronics
Connector angle information used in DASY system to align probe sensor X to the robot coordinate system.

Methods Applied and Interpretation of Parameters

- **DC Voltage Measurement:** Calibration Factor assessed for use in DASY system by comparison with a calibrated instrument traceable to national standards. The figure given corresponds to the full scale range of the voltmeter in the respective range.
- **Connector angle:** The angle of the connector is assessed measuring the angle mechanically by a tool inserted. Uncertainty is not required.
- The following parameters as documented in the Appendix contain technical information as a result from the performance test and require no uncertainty.
 - **DC Voltage Measurement Linearity:** Verification of the Linearity at +10% and -10% of the nominal calibration voltage. Influence of offset voltage is included in this measurement.
 - **Common mode sensitivity:** Influence of a positive or negative common mode voltage on the differential measurement.
 - **Channel separation:** Influence of a voltage on the neighbor channels not subject to an input voltage.
 - **AD Converter Values with inputs shorted:** Values on the internal AD converter corresponding to zero input voltage
 - **Input Offset Measurement:** Output voltage and statistical results over a large number of zero voltage measurements.
 - **Input Offset Current:** Typical value for information; Maximum channel input offset current, not considering the input resistance.
 - **Input resistance:** Typical value for information: DAE input resistance at the connector, during internal auto-zeroing and during measurement.
 - **Low Battery Alarm Voltage:** Typical value for information. Below this voltage, a battery alarm signal is generated.
 - **Power consumption:** Typical value for information. Supply currents in various operating modes.

DC Voltage Measurement

A/D - Converter Resolution nominal

High Range: 1LSB = 6.1 μ V , full range = -100...+300 mV

Low Range: 1LSB = 61nV , full range = -1.....+3mV

DASY measurement parameters: Auto Zero Time: 3 sec; Measuring time: 3 sec

| Calibration Factors | X | Y | Z |
|---------------------|---------------------------|---------------------------|---------------------------|
| High Range | 405.217 \pm 0.02% (k=2) | 404.944 \pm 0.02% (k=2) | 404.170 \pm 0.02% (k=2) |
| Low Range | 3.97747 \pm 1.50% (k=2) | 3.99640 \pm 1.50% (k=2) | 3.98639 \pm 1.50% (k=2) |

Connector Angle

| | |
|---|-------------------------------------|
| Connector Angle to be used in DASY system | 176.5 $^{\circ}$ \pm 1 $^{\circ}$ |
|---|-------------------------------------|

Appendix

1. DC Voltage Linearity

| High Range | | Reading (μ V) | Difference (μ V) | Error (%) |
|------------|---------|--------------------|-----------------------|-----------|
| Channel X | + Input | 199996.00 | 0.76 | 0.00 |
| Channel X | + Input | 20002.66 | 1.98 | 0.01 |
| Channel X | - Input | -19998.07 | 2.88 | -0.01 |
| Channel Y | + Input | 199996.91 | 1.60 | 0.00 |
| Channel Y | + Input | 20001.20 | 0.56 | 0.00 |
| Channel Y | - Input | -20001.74 | -0.74 | 0.00 |
| Channel Z | + Input | 199994.91 | -0.44 | -0.00 |
| Channel Z | + Input | 20000.27 | -0.23 | -0.00 |
| Channel Z | - Input | -20001.65 | -0.63 | 0.00 |

| Low Range | | Reading (μ V) | Difference (μ V) | Error (%) |
|-----------|---------|--------------------|-----------------------|-----------|
| Channel X | + Input | 2001.09 | 0.27 | 0.01 |
| Channel X | + Input | 202.00 | 0.81 | 0.40 |
| Channel X | - Input | -197.89 | 0.69 | -0.35 |
| Channel Y | + Input | 2000.99 | 0.22 | 0.01 |
| Channel Y | + Input | 200.07 | -1.02 | -0.50 |
| Channel Y | - Input | -201.19 | -2.34 | 1.18 |
| Channel Z | + Input | 2000.92 | 0.16 | 0.01 |
| Channel Z | + Input | 200.20 | -0.82 | -0.41 |
| Channel Z | - Input | -199.32 | -0.45 | 0.23 |

2. Common mode sensitivity

DASY measurement parameters: Auto Zero Time: 3 sec; Measuring time: 3 sec

| | Common mode Input Voltage (mV) | High Range Average Reading (μ V) | Low Range Average Reading (μ V) |
|-----------|--------------------------------|---------------------------------------|--------------------------------------|
| Channel X | 200 | 10.55 | 8.63 |
| | - 200 | -6.76 | -8.77 |
| Channel Y | 200 | -9.89 | -10.34 |
| | - 200 | 7.59 | 7.71 |
| Channel Z | 200 | 12.72 | 12.38 |
| | - 200 | -13.94 | -14.25 |

3. Channel separation

DASY measurement parameters: Auto Zero Time: 3 sec; Measuring time: 3 sec

| | Input Voltage (mV) | Channel X (μ V) | Channel Y (μ V) | Channel Z (μ V) |
|-----------|--------------------|----------------------|----------------------|----------------------|
| Channel X | 200 | - | 1.02 | -3.16 |
| Channel Y | 200 | 8.35 | - | 2.35 |
| Channel Z | 200 | 10.56 | 5.06 | - |

4. AD-Converter Values with inputs shorted

DASY measurement parameters: Auto Zero Time: 3 sec; Measuring time: 3 sec

| | High Range (LSB) | Low Range (LSB) |
|-----------|------------------|-----------------|
| Channel X | 15888 | 15493 |
| Channel Y | 16012 | 15900 |
| Channel Z | 15706 | 16099 |

5. Input Offset Measurement

DASY measurement parameters: Auto Zero Time: 3 sec; Measuring time: 3 sec

Input 10M Ω

| | Average (μ V) | min. Offset (μ V) | max. Offset (μ V) | Std. Deviation (μ V) |
|-----------|--------------------|------------------------|------------------------|---------------------------|
| Channel X | 1.13 | -0.62 | 2.79 | 0.50 |
| Channel Y | -0.89 | -2.63 | 0.76 | 0.48 |
| Channel Z | -0.60 | -2.36 | 0.94 | 0.50 |

6. Input Offset Current

Nominal Input circuitry offset current on all channels: <25fA

7. Input Resistance (Typical values for information)

| | Zeroing (kOhm) | Measuring (MOhm) |
|-----------|----------------|------------------|
| Channel X | 200 | 200 |
| Channel Y | 200 | 200 |
| Channel Z | 200 | 200 |

8. Low Battery Alarm Voltage (Typical values for information)

| Typical values | Alarm Level (VDC) |
|----------------|-------------------|
| Supply (+ Vcc) | +7.9 |
| Supply (- Vcc) | -7.6 |

9. Power Consumption (Typical values for information)

| Typical values | Switched off (mA) | Stand by (mA) | Transmitting (mA) |
|----------------|-------------------|---------------|-------------------|
| Supply (+ Vcc) | +0.01 | +6 | +14 |
| Supply (- Vcc) | -0.01 | -8 | -9 |