



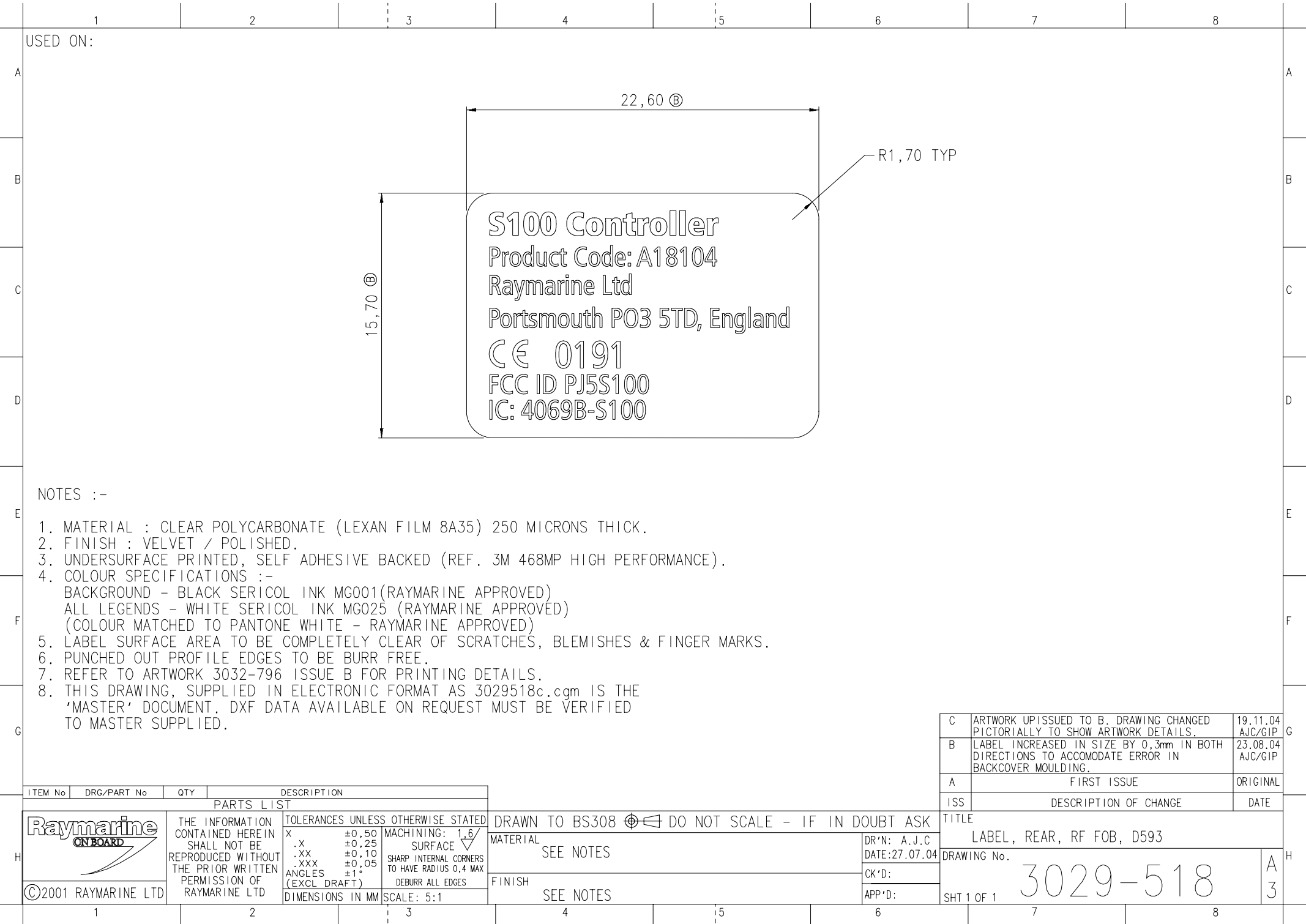
Raymarine UK Limited

S100 Controller

Label Drawing and Location

FCC ID PJ5S100


IC: 4069B-S100



NOTES :-

- 1. MATERIAL : CLEAR POLYCARBONATE (LEXAN FILM 8A35) 250 MICRONS THICK.
- 2. FINISH : VELVET / POLISHED.
- 3. UNDERSURFACE PRINTED, SELF ADHESIVE BACKED (REF. 3M 468MP HIGH PERFORMANCE).
- 4. COLOUR SPECIFICATIONS :-
BACKGROUND - BLACK SERICOL INK MG001(RAYMARINE APPROVED)
ALL LEGENDS - WHITE SERICOL INK MG025 (RAYMARINE APPROVED)
(COLOUR MATCHED TO PANTONE WHITE - RAYMARINE APPROVED)
- 5. LABEL SURFACE AREA TO BE COMPLETELY CLEAR OF SCRATCHES, BLEMISHES & FINGER MARKS.
- 6. PUNCHED OUT PROFILE EDGES TO BE BURR FREE.
- 7. REFER TO ARTWORK 3032-796 ISSUE B FOR PRINTING DETAILS.
- 8. THIS DRAWING, SUPPLIED IN ELECTRONIC FORMAT AS 3029518c.cgm IS THE 'MASTER' DOCUMENT. DXF DATA AVAILABLE ON REQUEST MUST BE VERIFIED TO MASTER SUPPLIED.

C	ARTWORK UPISSUED TO B. DRAWING CHANGED PICTORIALY TO SHOW ARTWORK DETAILS.	19.11.04 AJC/GIP
B	LABEL INCREASED IN SIZE BY 0,3mm IN BOTH DIRECTIONS TO ACCOMODATE ERROR IN BACKCOVER MOULDING.	23.08.04 AJC/GIP
A	FIRST ISSUE	ORIGINAL
ISS	DESCRIPTION OF CHANGE	DATE

ITEM No	DRG/PART No	QTY	DESCRIPTION	
PARTS LIST				
	THE INFORMATION CONTAINED HEREIN SHALL NOT BE REPRODUCED WITHOUT THE PRIOR WRITTEN PERMISSION OF RAYMARINE LTD	TOLERANCES UNLESS OTHERWISE STATED		
		X ±0,50	MACHINING: 1,6/	
		.X ±0,25	SURFACE ∇	
		.XX ±0,10	SHARP INTERNAL CORNERS TO HAVE RADIUS 0,4 MAX	
.XXX ±0,05				
©2001 RAYMARINE LTD		ANGLES ±1° (EXCL DRAFT)	DEBURR ALL EDGES	
		DIMENSIONS IN MM	SCALE: 5:1	

DRAWN TO BS308 ⌀ ≡ DO NOT SCALE - IF IN DOUBT ASK	
MATERIAL	SEE NOTES
FINISH	SEE NOTES

TITLE	
LABEL, REAR, RF FOB, D593	
DRAWING No.	3029-518
SHT 1 OF 1	A3



S100 Controller: FCC and IC label location