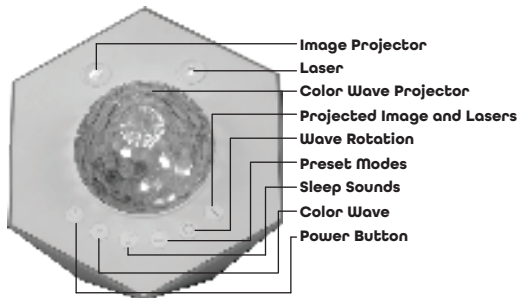
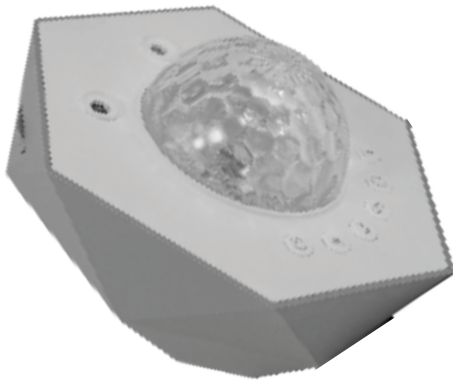


eco  
SCAPES

# GALAXY WAVE

smart projector

Model # 70643, 70643-1, 70643-DK1



## Manual Operation

- Power Button**  
Press to turn ON/OFF – will return to last setting used when turned back on.
  - Pairing Mode Reset – Press and hold the power button until the dome flashes to enter pairing mode.
  - 6hr Timeout – The projected image automatically turns off after 6 hours – lasers and effects will remain on.
- Color Wave**  
Press to change the color of the wave effect. Press and hold to adjust brightness – the dome will flash when the highest/lowest level has been reached. (See **Wave Button Guide**)
- Sleep Sounds**  
Press to cycle through each sound. Press and hold for volume control – the dome will flash when the highest/lowest level has been reached. (See **Sleep Sounds Guide**)
- Preset Modes**  
Press to change between 10 preset combinations of effects and sounds. (See **Presets** in app)
- Wave Rotation Speed**  
Press to change between pause, slow, medium-slow, medium-fast, Fast. Press and hold to reset to Factory settings – the dome will flash when Factory settings are reset. App settings will not reset and device will still stay connected to your phone.
- Projected Image and Lasers**  
Press to cycle through each image combination. Use the scroll wheel on the side of the projector to change the image. Press and hold to adjust the laser's brightness – the dome will flash when the highest/lowest level has been reached. (See **Projection and Laser Button Guide**)

**IMPORTANT:** DO NOT stare or look directly into the LED dome, laser emitter or image projector as this can be hazardous and can damage your eyes.

## Projector Placement

- You can use the geometric design of the smart projector to point the light where you want.
- You can set the projector onto the included anti-skid pad. Peel off the pad's plastic backing and stick it onto the surface where the projector will be set. Make sure the surface is clean and dry.
- The lower the projector is in the room, the larger the projected image will be.

Remotely operate your smart Galaxy Wave Projector with the easy-to-use Enbrighten app. Follow the available instructions and resources to set up your smart device.

**1** Download the app

Scan the QR code or search Enbrighten on the Apple App Store or on Google Play.

Download on the App Store | GET IT ON Google Play

**2** Setup and installation

1. Create an account in the Enbrighten app | 2. Plug in the smart Galaxy Wave Projector

**3** Setup and installation

Add devices, control the smart Galaxy Wave Projector From anywhere and create schedules

**4** Voice control

Works with Amazon Alexa or Google Assistant-enabled devices

works with alexa | works with Google Home

Select "Support" in the Enbrighten app or Follow the steps in the Amazon Alexa or Google Home app to connect your Enbrighten account

## Sleep Sounds Guide

Order	Sound Description
1	Babbling brook
2	Campfire
3	Ocean waves
4	Nature
5	Thunderstorm
6	Waterfall
7	Gentle rain
8	White noise
9	Relaxation
10	Meditation
11	Lullaby
12	Twinkle
13	OFF

## Projected Image and Laser Guide

Order	Projected Image
1	Image, laser and wave
2	Laser and wave
3	Wave only
4	Laser Fade and wave
5	Laser Fade
6	Laser only
7	Image only
8	Image and wave
9	Image and laser
10	OFF

## Color Wave Guide

Order	Wave Description
1	Red
2	Green
3	Blue
4	Orange
5	Light blue
6	Purple
7	Pink
8	Prism (all colors but white)
9	Blue, red, green
10	Purple, green, orange
11	Pink, red, orange
12	Purple, blue, light blue
13	Pink, green, orange
14	Pink, red, green, blue, orange
15	Pink, red, purple
16	Light blue, green, blue
17	Pink, orange, light blue, purple

## Thank you for your purchase!



### Instructions made easy

Read instructions or watch easy-to-follow video.

Scan code or visit [byjasco.com/70643i](https://byjasco.com/70643i)



### Register your product

Receive exclusive deals and register your product.

Scan code or visit [byjasco.com/deals](https://byjasco.com/deals)



Discover more innovative lighting at [byjasco.com/lighting](https://byjasco.com/lighting)



### Like our product?

Leave a review on your favorite retailer website or amazon.com



### Having problems?

Let us know how we can help. Call 1-800-654-8483 between 7AM-8PM, M-F, Central Time.

App Store is a service mark of Apple Inc. Google, Google Play and all related logos are trademarks of Google LLC. Amazon, Alexa and all related logos are trademarks of Amazon.com, Inc. or its affiliates.

Patented and patent pending. For more information, visit: <https://byjasco.com/patents>

MADE IN VIETNAM

Distributed by Jasco Products Company LLC, 10 E. Memorial Rd., Oklahoma City, OK 73114.

This Jasco product comes with a 1-year limited warranty. Visit [www.byjasco.com](https://www.byjasco.com) for warranty details.

Questions? Contact our U.S.-based Consumer Care at 1-800-654-8483 between 7AM-8PM, M-F, Central Time.

70643 man v1, 07/22



Separate paper from plastic before recycling

byjasco.com/recycle  
paper made from 25% post consumer waste

## Operation



### USB-C Power

Plug USB-C end of power cable into product and USB-A end into 5V, 2A power source (adapter not included).



# FCC STATEMENT

Suppliers Declaration of Conformity | Model #: Model # 70643, 70643-1, 70643-DK1 | Jasco Products Company LLC,  
10 E. Memorial Rd., Oklahoma City, OK 73114 | [www.byjasco.com](http://www.byjasco.com)

This device complies with Part 15 of the FCC rules. Operation is subject to the following two conditions: (1) this device may not cause harmful interference, and (2) this device must accept any interference received, including interference that may cause undesired operation.

**FCC NOTE:** The manufacturer is not responsible for any radio or TV interference caused by unauthorized modifications to this equipment. Such modifications could void the user's authority to operate the equipment.

**NOTE:** This equipment has been tested and found to comply with the limits for a Class B digital device, pursuant to Part 15 of the FCC rules. These limits are designed to provide reasonable protection against harmful interference in a residential installation. This equipment generates, uses and can radiate radio frequency energy, and if not installed and used in accordance with the instructions, may cause harmful interference to radio communications. However, there is no guarantee interference will not occur in a particular installation. If this equipment does cause harmful interference to radio or television reception, which can be determined by turning the equipment off and on, the user is encouraged to try to correct the interference by one or more of the following measures:

- Reorient or relocate the receiving antenna.
- Increase the separation between the equipment and receiver.
- Connect the equipment to an outlet on a circuit different from that to which the receiver is connected.
- Consult the dealer or an experienced radio/TV technician for help.

## SAFETY WARNINGS

**DO NOT** put your ear next to speaker as it may cause hearing loss or damage.

Use of controls or adjustments or performance of procedures other than those specified herein may result in hazardous radiation exposure.

- This is NOT a toy and not intended for use by children. Adult supervision is required at all times when children are nearby.
- Indoor use only. Do NOT expose this product to rain, moisture or water under any circumstances.
- UNDER NO CIRCUMSTANCES shall attempts be made to open the protective housing or operate the device if the product has been damaged.
- Do NOT stare or look directly into the laser aperture as this can be hazardous and can damage your eyes. Intentional long-term viewing of CLASS 2 levels of laser light can be hazardous. As with all bright light-sources, when you operate this device in unsupervised general public areas, it is recommended that up-close access to the light be restricted or prevented and the beams be directed into locations where persons are not expected.
- This laser display device incorporates a CLASS 2 laser system which, by itself, may be hazardous. However, this laser display product incorporates a protective housing and diffractive optics in its design so that there is no exposure or human access to laser radiation during operation or maintenance above the CLASS 2 limits. The laser power is within the Class 2 limit of 1mW.
- This product is classified as a Class 2 laser product and complies with the applicable parts of IEC/EN 60825-1 Ed. 2.0:2007 and Ed. 3.0:2014. The manufacturer additionally certifies it complies with the US FDA Federal Laser Product Performance Standard (FLPPS) provided in 21 CFR Subchapter J, 1040.10 and 1040.11 except for allowable deviations specified in FDA Guidance documents.

• LASERS SHOULD NOT BE POINTED INTO THE SKY WITHIN 10 NAUTICAL MILES (18.5km) OF AN AIRPORT. IF YOU ARE LOCATED WITHIN THIS SPECIFIC PERIMETER, WE RECOMMEND THE LASERS BE POINTED DOWN AT THE GROUND TO PREVENT STRAY BEAMS FROM BEING PROJECTED INTO THE AIR. CHECK WITH YOUR LOCAL AIRPORT OR PROVINCIAL GUIDELINES FOR FURTHER INFORMATION.

• It is the owner/operator's responsibility to use this device in compliance with local laws.

\*RF warning for Mobile device:

This equipment complies with FCC radiation exposure limits set forth for an uncontrolled environment. This equipment should be installed and operated with minimum distance 20cm between the radiator and your body.



### WARNING

- THIS PRODUCT IS NOT A TOY
- NOT INTENDED FOR USE BY CHILDREN
- USE Indoors ONLY
- PLUG ONLY INTO USB SAFETY CERTIFIED TYPE A PORT
- THE INCLUDED USB CABLE SHOULD ONLY BE USED FOR THIS DEVICE. IT SHOULD NOT BE USED FOR ANY OTHER LIKE ITEMS, EVEN IF THE CABLE CAN BE INSERTED IN THEM.
- LASER LIGHT. DO NOT STARE INTO THE BEAM. CLASS 2 LASER PRODUCT. DIODE LASER-MAX. OUTPUT <1mW. WAVELENGTH 530-534nm.

### CAUTION - TABLETOP LASER

Temperature ranges: -20° -40°C (-4°F-104°F)

Max output <1mW / IEC 60825-1:2014

Wavelength: 532nm

Manufacturer: JASCO PRODUCTS COMPANY LLC,  
10 E. Memorial Rd., Oklahoma City, OK 73114

Product name: Tabletop laser projector

Beam divergence: 1.5mrad

Rating: 5V=2A max.

Operating humidity: 10%~90%RH

COMPLIES WITH  
21 CFR 1040.10 AND 1040.11  
EXCEPT FOR DEVIATIONS  
PURSUANT TO LASER NOTICE  
NO.50, DATED JUNE 24, 2007.

