

ELA01 Quick Start

Ecolink Adapter

Read before installing

The Ecolink Adapter provides remote access to Ecoer Cloud through the Ecolink Gateway and Ecoer Smart Service (ESS) pro App.

Must be installed by a trained, experienced technician. Read these instructions carefully. Failure to follow these instructions can damage the product or cause a hazardous condition.

Specifications

Model: **ELA01**

Operating Ambient Temperature: **-40°F to 167°F (-40°C to 75°C)**

Operating Relative Humidity: **5% to 95%** (non-condensing)

Power Rated Input Voltage: **12VDC@0.5A**

RF Power Output Max: **20dBm**

RF Frequency Band: **915MHz**

Maximum Number of Units: **5 per Ecolink Gateway**

A “Unit” is:

- Ecolink Adapter that is wired to the heating/cooling equipment.
- Ecolink Zone Panel wired by thermostats.

Need help

For more information about this product please visit **www.ecoer.com** or call **+1 (703) 348-2538** for technical support.

INSTALLATION

Step 1

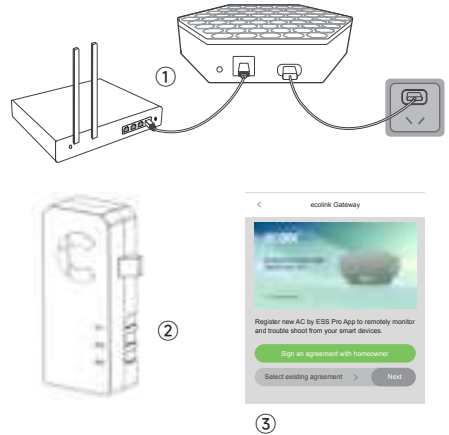
Power up the Ecolink Gateway and connect it to the inter router.

Step 2

Connect the ELA01 to a Ecoer AHU, then power up the AHU.

Step 3

Log in and register the ESS pro App by scanning the QR code or entering the SN found on the ELG01, ELA01 and AHU one by one.



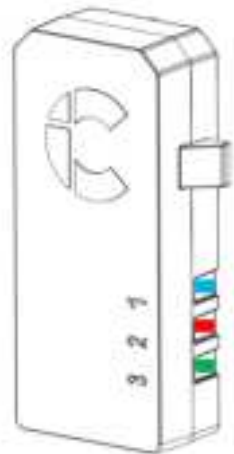
LED Behavior

ALL Led On: The ELA01 starts to up.

Blinking Blue: The ELA01 is connected to Ecolink Gateway and exchanging data with AHU.

Blinking Red: The ELA01 is lost connecting with Ecolink Gateway.

Blinking Green: The ELA01 can not communicating with the AHU.



Ecolink Adapter CHECKLIST:

Ecolink Gateway is connected to the Ecoer Cloud.
ELA01 is connected to AHU which has been power up.
The Antenne is connect to ELA01 with SMA port.
Gateway and Adapter are registered to ESS pro App.

FCC Compliance Statement (Part 15.19) (USA only)

This device complies with Part 15 of the FCC Rules. Operation is subject to the following two conditions:

1. This device may not cause harmful interference, and
2. This device must accept any interference received, including interference that may cause undesired operation.

FCC Warning (Part 15.21) (USA only)

Changes or modifications not expressly approved by the party responsible for compliance could void the user's authority to operate the equipment.

FCC Interference Statement (Part 15.105 (b)) (USA only)

This equipment has been tested and found to comply with the limits for a Class B digital device, pursuant to Part 15 of the FCC Rules. These limits are designed to provide reasonable protection against harmful interference in a residential installation. This equipment generates uses and can radiate radio frequency energy and, if not installed and used in accordance with the instructions, may cause harmful interference to radio communications. However, there is no guarantee that interference will not occur in a particular installation. If this equipment does cause harmful interference to radio or television reception, which can be determined by turning the equipment off and on, the user is encouraged to try to correct the interference by one of the following measures:

- Reorient or relocate the receiving antenna.
- Increase the separation between the equipment and receiver.
- Connect the equipment into an outlet on a circuit different from that to which the receiver is connected.
- Consult the dealer or an experienced radio/TV technician for help.

Equipment Interface Module, Thermostats and Outdoor Sensor

To comply with FCC and Industry Canada RF exposure limits for general population/uncontrolled exposure, the antenna(s) used for these transmitters must be installed to provide a separation distance of at least 20 cm from all persons and must not be co-located or operating in conjunction with any other antenna or transmitter.

Portable Comfort Control

This portable transmitter with its antenna complies with FCC and Industry Canada RF exposure limits for general population/uncontrolled exposure. This device must not be co-located or operating in conjunction with any other antenna or transmitter.

IC Regulations**RSS-GEN**

This device contains licence-exempt transmitter(s)/receiver(s) that comply with Innovation, Science and Economic Development Canada's licence-exempt RSS(s). Operation is subject to the following two conditions:

1. This device may not cause interference.
2. This device must accept any interference, including interference that may cause undesired operation of the device.

The operation of this equipment is subject to the following two conditions: (1) this equipment or device may not cause harmful interference, and (2) this equipment or device must accept any interference, including interference that may cause undesired operation.

MAKING YOUR HOME GREEN & SMART

