



*AIRCURVE 11 INTERNAL PHOTOGRAPHS for PACIFIC project*

---

*Title:* AIRCURVE 11 INTERNAL PHOTOGRAPHS

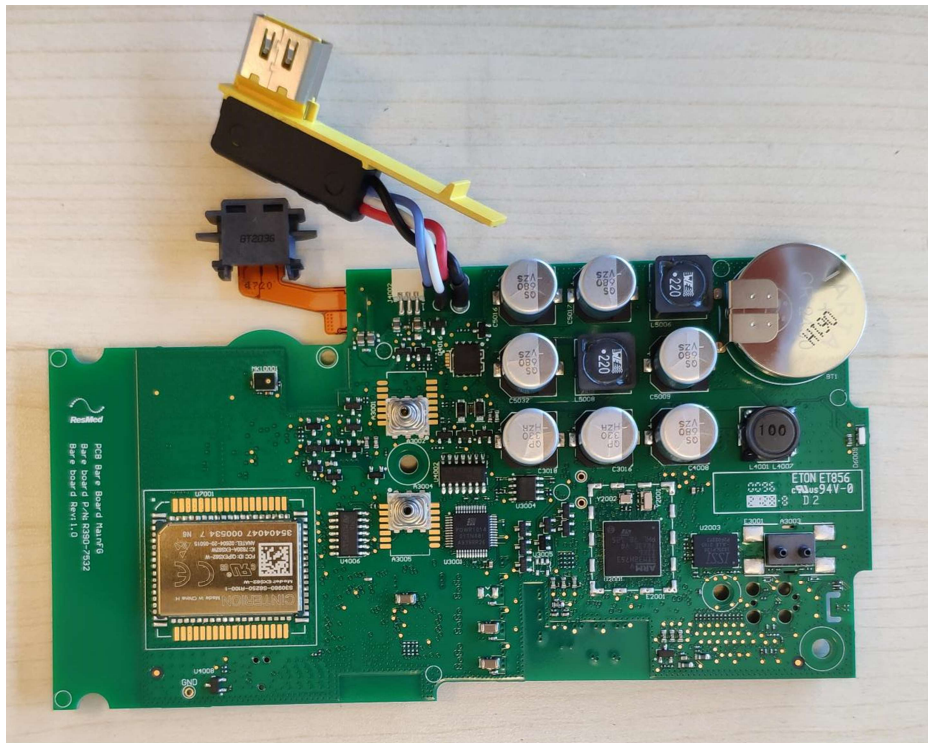
*Project/Product* PACIFIC

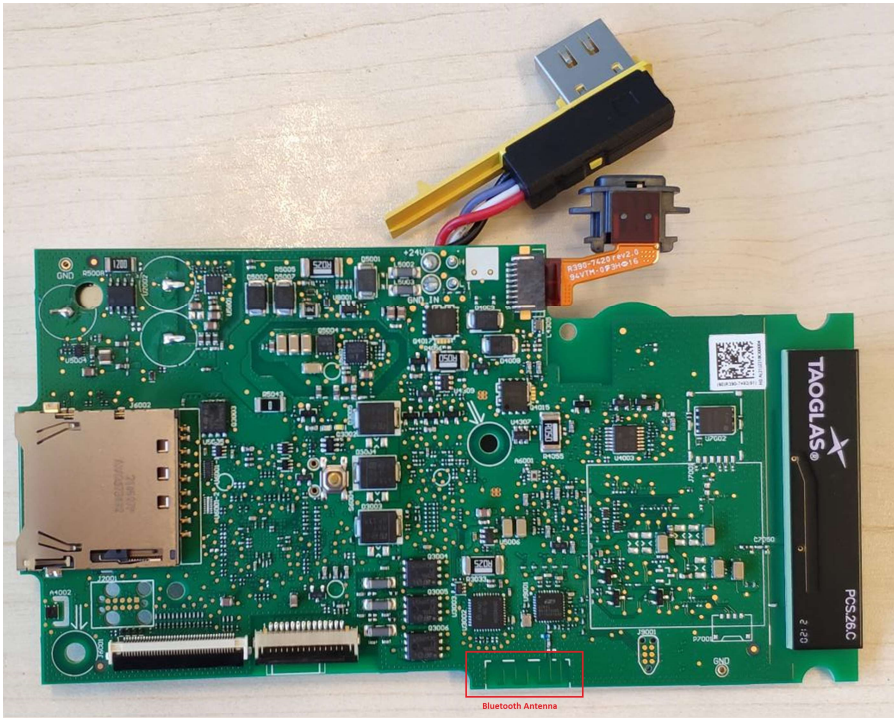

## 1. Purpose

This document contains the internal photographs of the PCBA for the Pacific Project, and is applicable to the following device models:

Model Name / Product Code	Marketing Name
39491	AIRCURVE 11 ASV USA
39492	AIRCURVE 11 S USA
39493	AIRCURVE 11 ST USA
39494	AIRCURVE 11 VAUTO USA
39495	AIRCURVE 11 VAUTO CAN
39496	AIRCURVE 11 S CAN
39497	AIRCURVE 11 ST CAN
39498	AIRCURVE 11 ASV CAN
51400	AIRCURVE 11 ST NORTH AMERICA

## 2. Internal Photographs

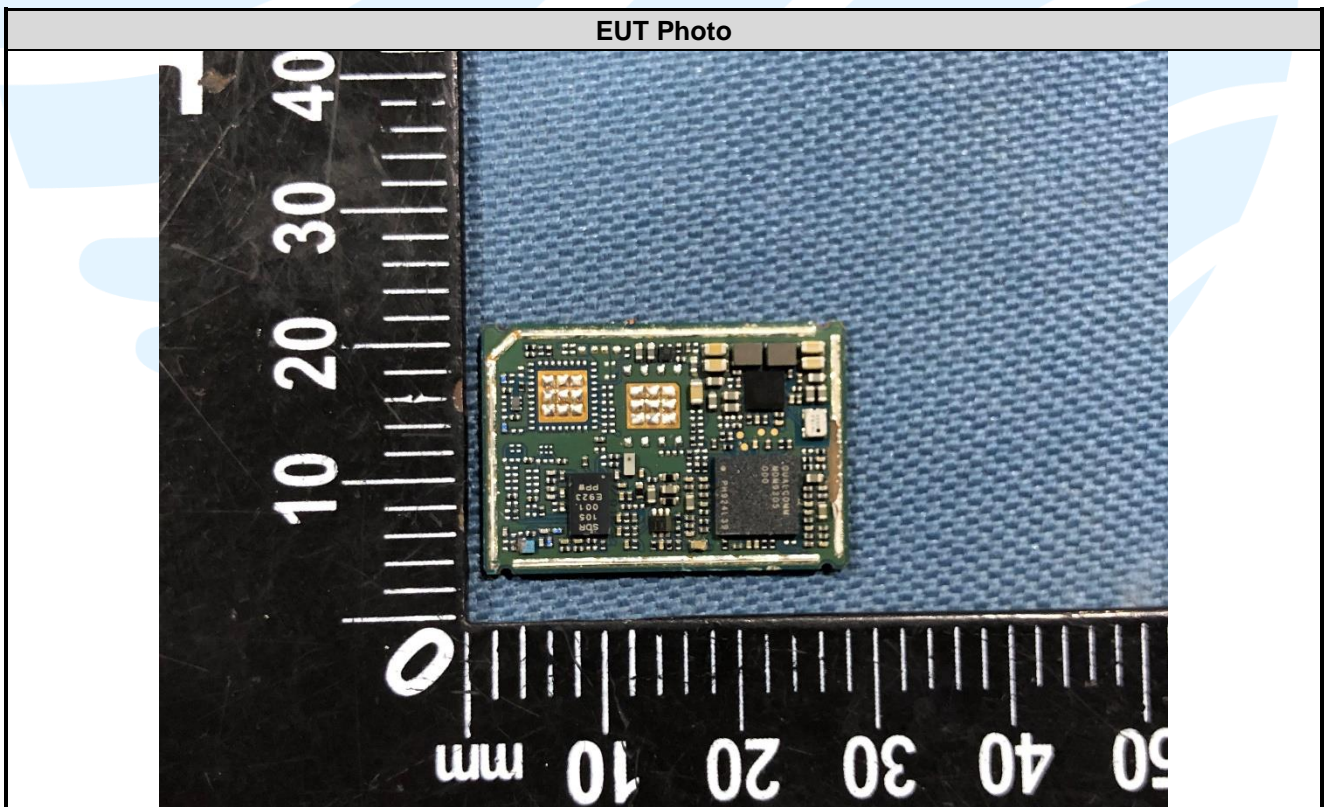
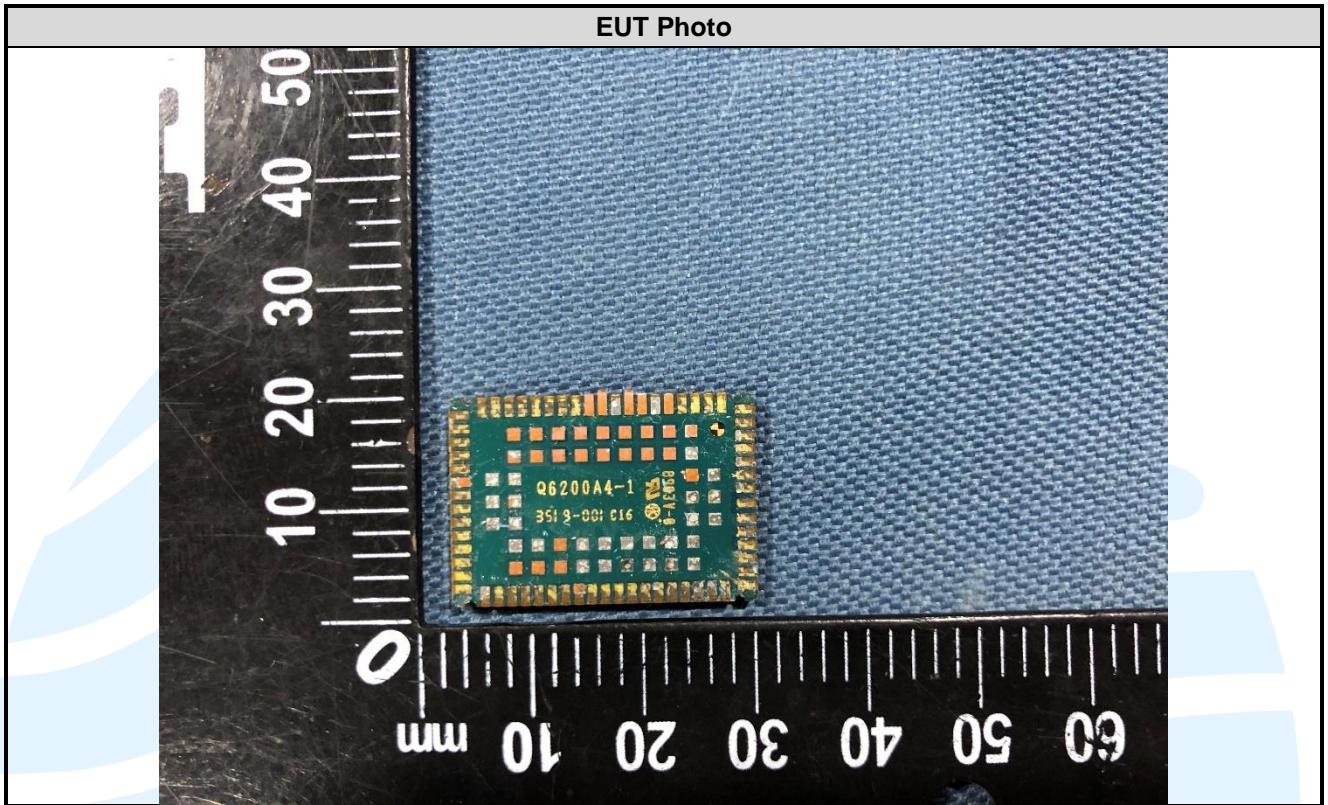
View	Photograph
PCBA Top View	 <p>The photograph shows the top view of a green printed circuit board (PCBA) for the AIRCURVE 11 device. The board is populated with various electronic components, including several electrolytic capacitors of different sizes and values (e.g., 100µF, 220µF, 10µF), resistors, and integrated circuits. A USB connector is visible on the left side, connected to a yellow cable. The board is mounted on a light-colored surface.</p>

View	Photograph
PCBA Bottom View	 <p>A photograph of the bottom view of a green printed circuit board (PCBA). The board is populated with various electronic components, including integrated circuits, capacitors, and resistors. A red rectangular box highlights a small component labeled "Bluetooth Antenna". To the right of the board, a black and yellow connector cable is visible. A black label with the "TAOGLAS" logo and "PCS28C" text is attached to the right edge of the board. A QR code is also present on the board.</p>
Cellular Module	 <p>A close-up photograph of a cellular module mounted on a green PCB. The module is a square component with gold-plated pins on its top and bottom edges. It features the "CINTERION" logo, "Made in China H", and the part number "S30960-S6250-R100-1". Below this, it says "Model: EXS62-W". There is a QR code, a "cRU" logo, and regulatory markings including "FCC ID: QIPEXS62-W", "IC: 7630A-EXS62W", and "ANATEL: 02604-20-05015". At the bottom, the number "35404047 000534 7 N6" is printed. The PCB has "U4008" and "U1001" markings near the module.</p>



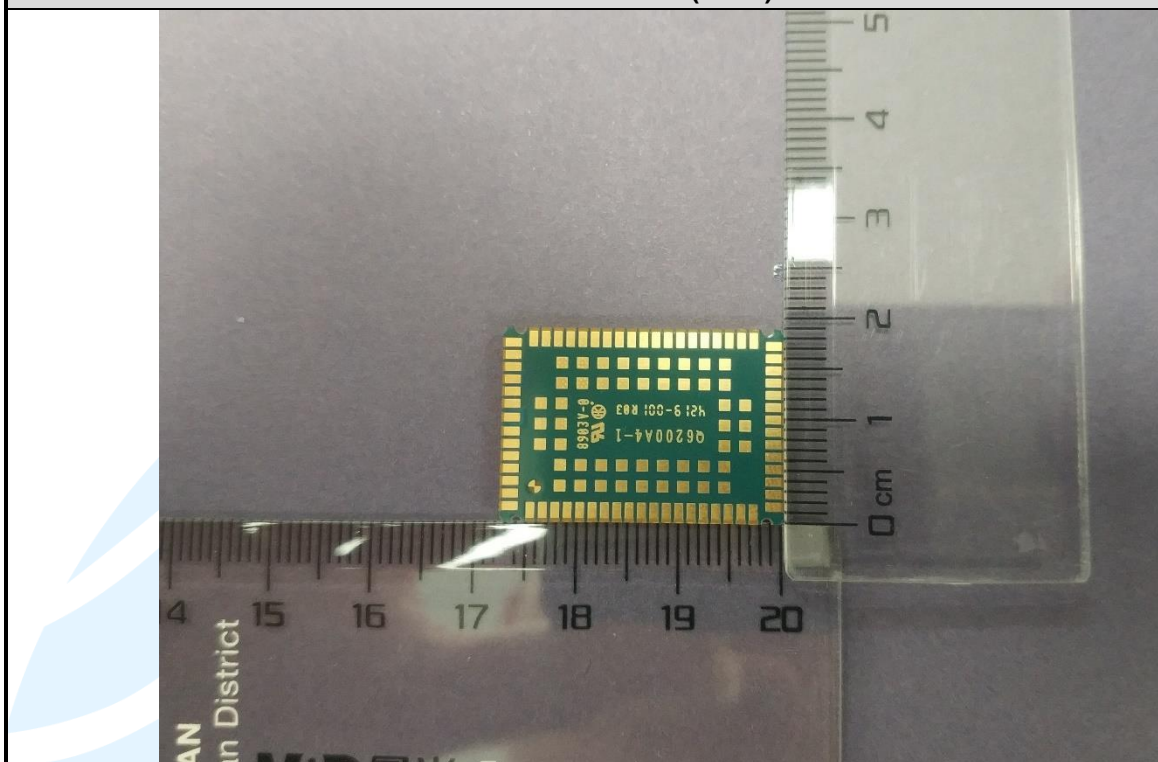
## APPENDIX 2 PHOTOS OF EUT CONSTRUCTIONAL DETAILS

### EUT PHOTOS





EUT Photo(ESIM)



EUT Photo(ESIM)

