

Shenzhen 3Good Wireless Technology Co., Ltd

Antenna Specification& report

客户 Customer		规格型号 Specs	C68B1
三好料号 Part Number	C68B1-01 C68B1-02 C68B1-03	频 段 Frequency Band	BT&2.4G WIFI:2400~2483.5MHZ GSM850/900/1800/1900 WCDMA2/4/5/8 B2.3.4.5.7.8.12.13.17.26.28.66.38
颜 色 Color	black	版 本 Edition	REV:A1
销 售 Salesperson		设 计 Design	叶金强
结 构 Structure	李富伦	确 认 Confirm	周武
日 期 Date		签字日期 Signing Date	
客户确认 Customer confirmation:			
Join hands to create the future			

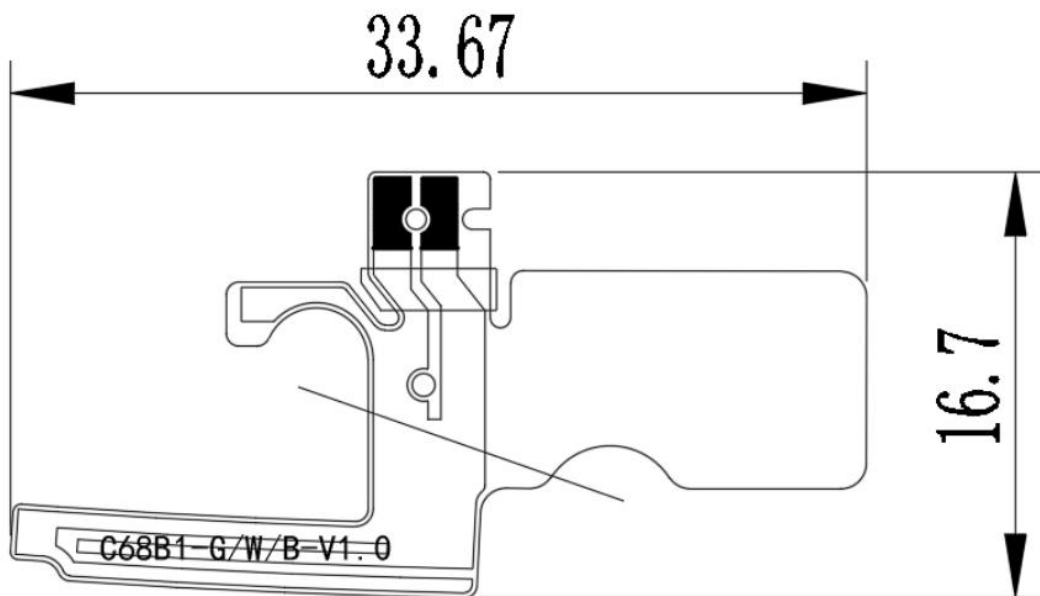
/

深圳市三好无线通信有限公司
深圳市宝安区大宝路 49-1 号金富来大厦 501-508

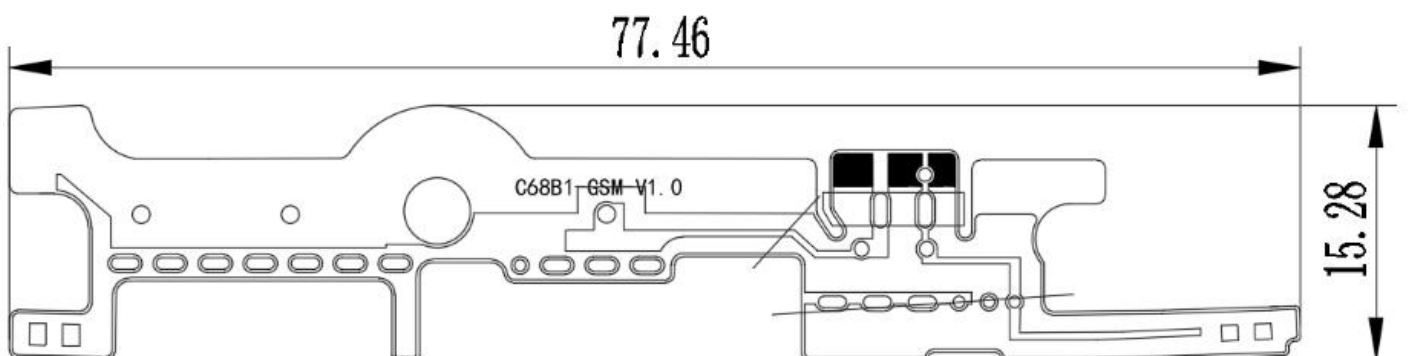
目录

- 一、产品规格(Product specification)..... 3
- 二、电器性能(Electrical performance)..... 3
 - 1.规格标准(Specification standard)..... 3
 - 2.天线的匹配电路(Matching circuit)..... 3
- 三、参数的测试(Parameter test)..... 4
 - 1.测试的设置(Test settings)..... 4
 - 2.测试结果(Test result)..... 4
- 四、有源测试的设置(Active test setup)..... 5
 - 1.测试的场地(Test site)..... 5
 - 2.测试结果(Test result)..... 5

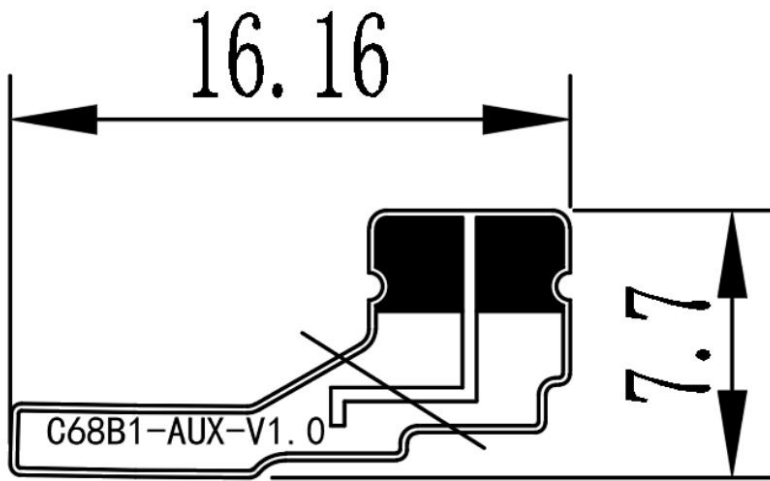
Three in one antenna



Main set antenna



Diversity antenna

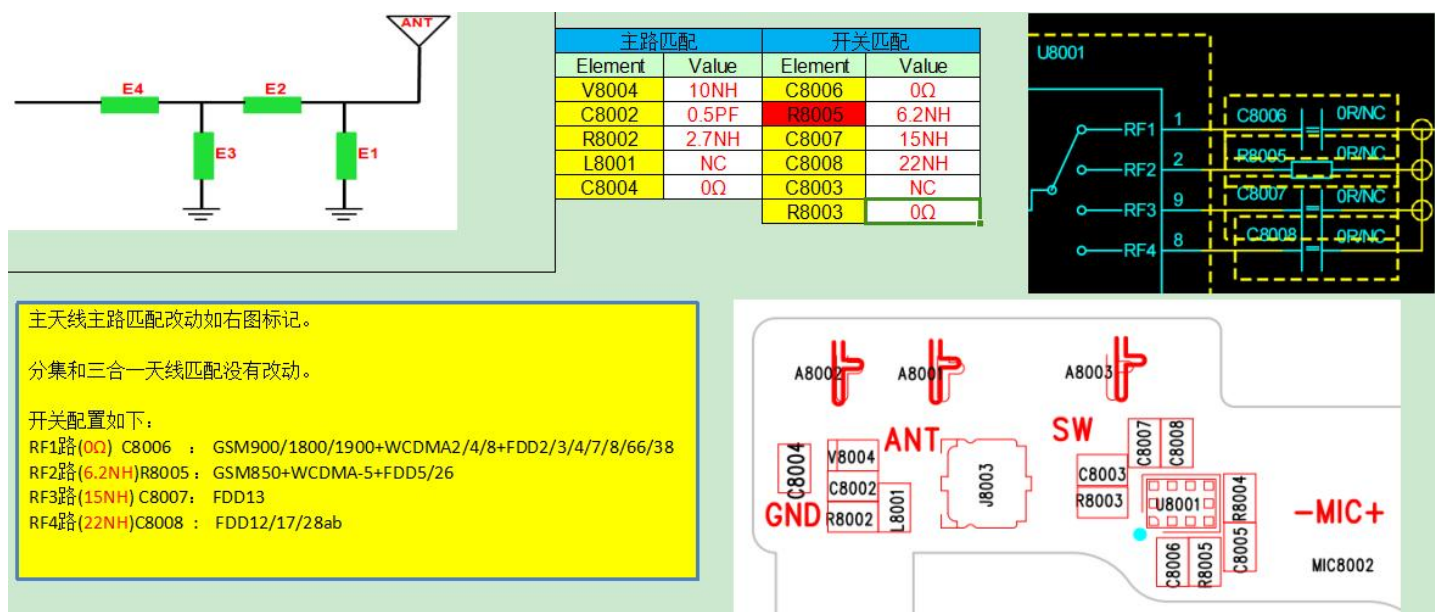


二、Electrical performance

1.Specifications

The operating frequency band of K55B1 antenna is 699~960MHZ and 1710~2700MHZ, in which resonance occurs.

2.Matching circuit of antenna



Structure of antenna: FPC

三、Test of parameters

1.Test settings

The connection of VSWR test device is:

E5071B network analyzer → 50 Ohmic coaxial Cable → 110mm Long copper tube → Test fixture

Treatment of test fixture:

Use a hard cable to lead out the SMA-J connector from the 50 ohm test point of the antenna on the mobile phone PCB, connect it to the copper tube with a choke, and then connect other devices in turn.

Passive parameters of main antenna:

工作频段(Working frequency band): 700~960MHZ, 1710~2700MHZ

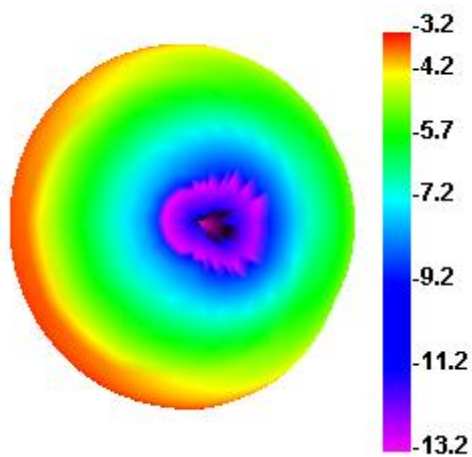
GSM850/900/1800/1900

WCDMA2/4/5/8

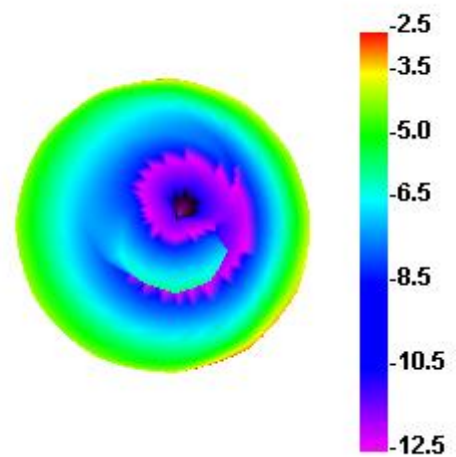
B2/3/4/5/7/8/12/13/17/26/28/66/38

Gain	
频段 Band	增益 (dBi)
GSM850/WCDMA-B5/LTE-B5/26	-2.63
GSM900/WCDMA-B8/LTE-B8	-2.59
DCS1800/LTE-B3	0.85
PCS1900/WCDMA-B2/LTE-B2	1.57
WCDMA-B4/LTE-B4/66	1.33
LTE-B12/17/28	-2.87
LTE-B13	-2.72
LTE-B7	0.69
LTE-B38	-1.27
GPS	2.25
2.4G WIFI/BT	1.28

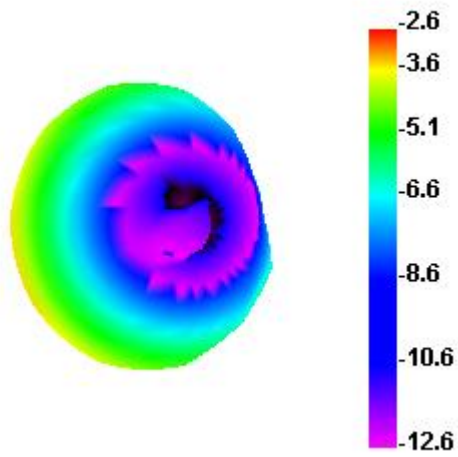
700.000MHz



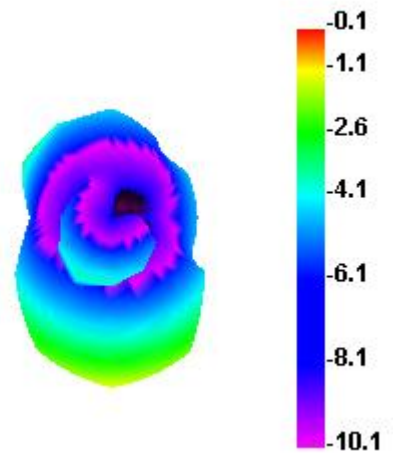
820.000MHz



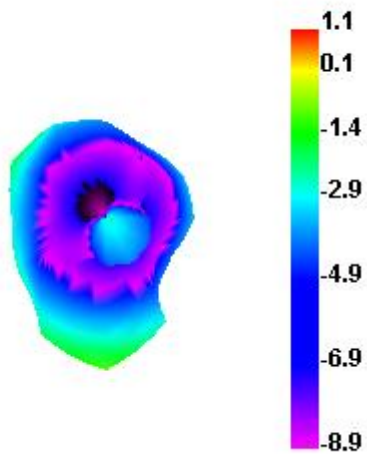
900.000MHz



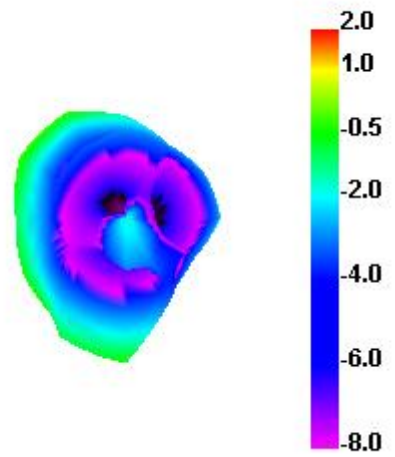
1710.000MHz



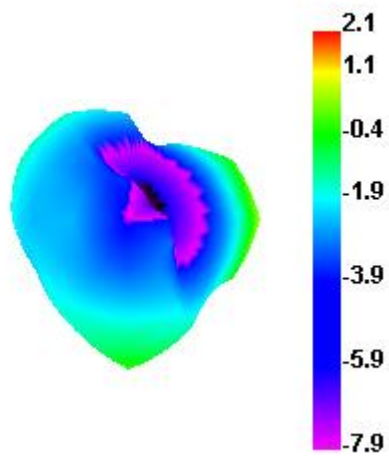
1800.000MHz



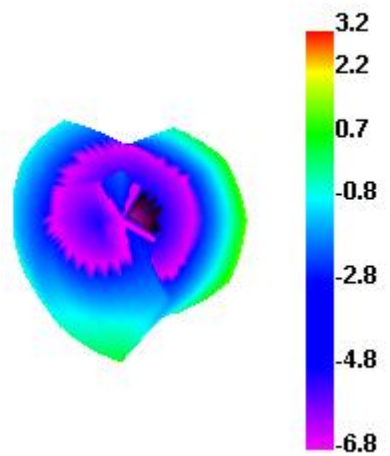
1900.000MHz



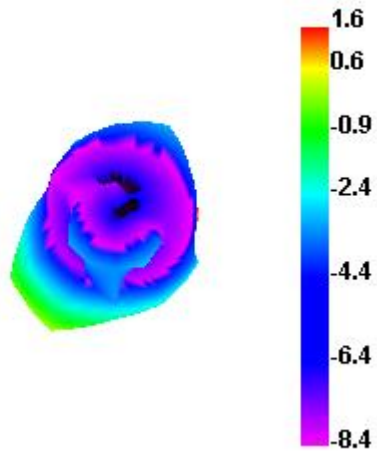
2100.000MHz



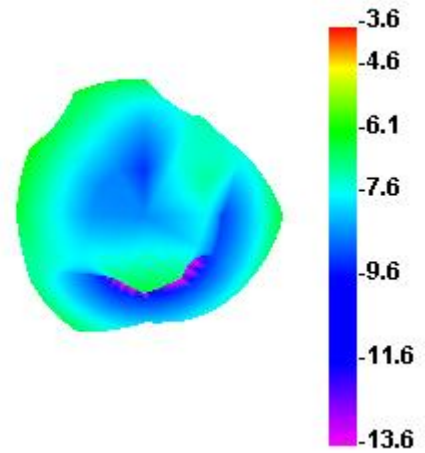
2200.000MHz



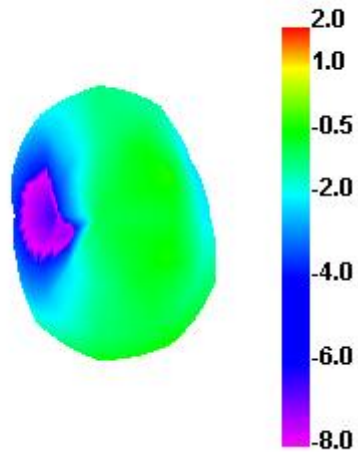
2500.000MHz



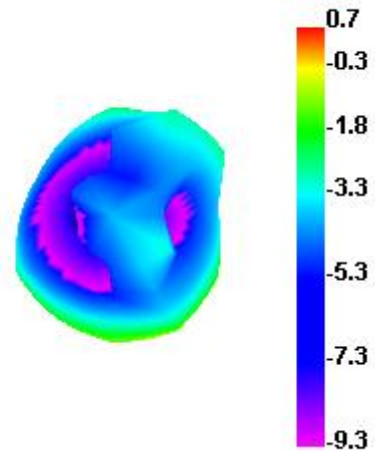
2690.000MHz



1550.000MHz



2400.000MHz



GPS/WIFI/BTPassive parameters of antenna:

工作频段(Working frequency band): 1560~1580MHZ, 2400~2500MHZ

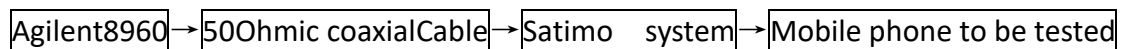
2.test result

2G	CH	TRP	TIS	亮TIS
GSM850	128	25.9		
	190	25.44		
	251	25.51	-101.33	-99.07
EGSM900	1	25.13		
	62	26.49		
	124	27.19	-101.02	-99.68
DCS1800	512	24.06		
	698	24.53		
	885	25.06	-105.94	-105.85
PCS1900	512	25.21		
	661	25.23		
	810	25.49	-106.06	-105.16
3G	CH	TRP	TIS	亮TIS
WCDMA2	9262	19.09		
	9400	19.88		
	9538	19.44	-106.24	-105.73
WCDMA4	1537	16.31		
	1625	16.64		
	1738	16.91	-106.29	-105.57
WCDMA5	4132	16.18		
	4183	16.2		
	4233	15.96	-102.83	-100.49
WCDMA8	2937	15.81		
	3013	17.11		
	3088	16.99	-102.2	-100.65
4G	CH	TRP	TIS	亮TIS
FDD-B2	18650	19.84		
	18900	19.45		
	19150	19.42	-95.29	-95.03
FDD-B3	19250	16.06		
	19575	17.22		
	19900	17.36	-94.63	-94.53
FDD-B4	20000	16.58		
	20175	16.83		
	20350	17.22	-95.79	-95.12
FDD-B5	20450	17.01		
	20525	16.59		
	20600	16.71	-91.2	-87.91
FDD-B7	20800	16.93		
	21100	17.64		
	21400	17.31	-90.17	-89.96
FDD-B8	21500	16.93		
	21625	18.2		
	21750	17.81	-91.95	-88.25
FDD-B12	23060	16.35		
	23095	16.59		
	23130	17	-91.64	-88.63
FDD-B13	23230	17.22	-91.23	-87.18
	23780	16.54		
	23790	16.84		
FDD-B17	23800	16.83	-91.62	-88.19
	26715	17.61		
	26865	18.3		
FDD-B26	27015	17.71	-91.64	-88.54
	27260	16.56		
	27435	17.48		
FDD-B28	27610	18		
	27410	17.62		
	27510	17.41	-90.92	-87.65
FDD-B66	132022	16.28		
	132322	16.92		
	132622	17.08	-96.05	-95.71
TDD-B38	37850	18.1		
	38000	17.21		
	38150	17.21	-87.76	-87.6

business as usual.

四、Active test setup

The active test devices are sequentially connected as follows:



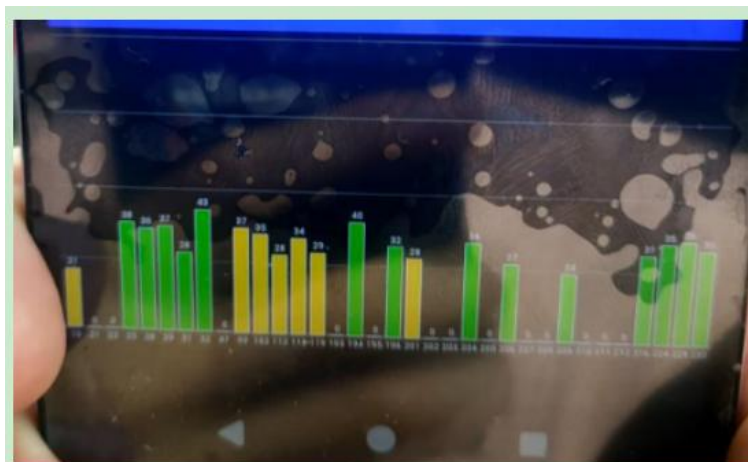
1.Test site

3Good microwave anechoic chamber: the test frequency range is 400MHz - 6GHz, the quiet zone range is 40cm circumference, and the reflectivity is less than - 90 dB.

2.test result

The maximum radiation power and maximum receiving sensitivity reflect the maximum power radiation value and the optimal receiving performance of the antenna in the entire radiation space. TRP and TIS reflect the average radiation power and average receiving sensitivity of the antenna, that is, the overall receiving performance of the antenna.

2-1.Three in one test results



GPS	最大信号强度	搜星数量	平均定位时间	
	43	14	56	雨天
WIFI	正常上网距离		在线视频流畅距离	
	10M		10M	

	CH	TRP	亮TIS
wifi-B	1	12.54	-78.61
	7	13.05	-78.89
	13	12.89	-79.68

2-2.蓝牙测试（Bluetooth Test）：

10 meters online listening to music, making calls smoothly without interruption