

EXTERNAL CD-ROM/CD-RW(FCD-524)



※ INSTALLATION MANUAL

We strongly recommend reading the MANUAL before using the product

FCC Compliance

LABELLING REQUIREMENTS(Part 15, Section 15.19 (a)(3))

This device complies with Part 15 of the FCC Rules. Operation is subject to the following two conditions: (1) this device may not cause harmful interference, and (2) this device must accept any interference received, including interference that may cause undesired operations.

The instructions furnished the user shall include the following or similar statement, placed in a prominent location in the text of the manual.

INFORMATION TO THE USER (Part 15, Section 15.105(b))

INFORMATION TO THE USER

This equipment has been tested and found to comply with the limits for a Class B digital device, pursuant to part 15 of the FCC Rules. These limits are designed to provide reasonable protection against harmful interference in a residential installation. This equipment generates, uses and can radiate radio frequency energy and, if not installed and used in accordance with the instructions, may cause harmful interference to radio communications. However, there is no guarantee that interference will not occur in a particular installation. If this equipment does cause harmful interference to radio or television reception, which can be determined by turning the equipment off and on, the user is encouraged to try to correct the interference by one more of the following measures:

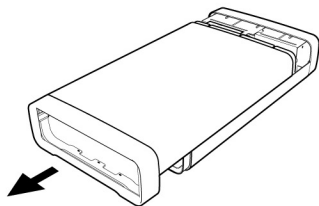
- Reorient or relocate the receiving antenna.
- Increase the separation between the equipment and receiver.
- Connect the equipment into an outlet on a circuit different from that to which the receiver is connected.
- Consult the dealer or an experienced radio/TV technician for help.

WARNING (Part 15, Section 15.21)

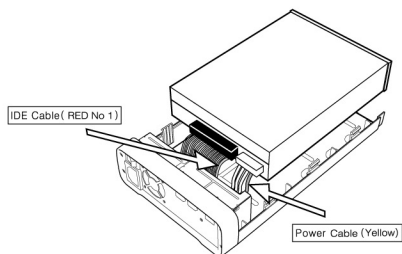
Changes or modifications not expressly approved by the sarotech could void the user's authority to operate the equipment.

Chapter 1 Connecting drive(CD-ROM/CD-RW)

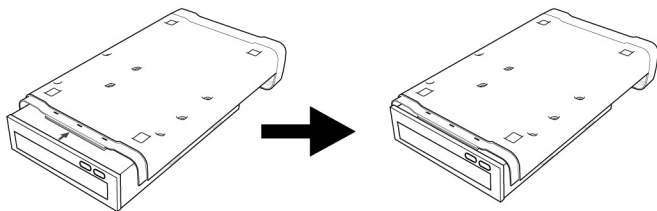
1. Remove the upper part from the main frame of FCD-524.



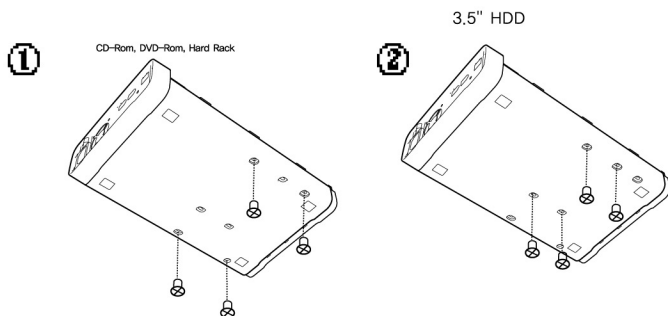
2. Connect the cable(IDE, POWER etc.) to CD-ROM/CD-RW on the bottom part.
Please connect the cable carefully to avoid displacement.



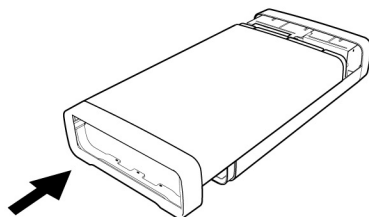
3. You should put the bottom case on the main frame of the FCD-524.
You should fix the bottom case to the front cover of CD-ROM/DVD-ROM.



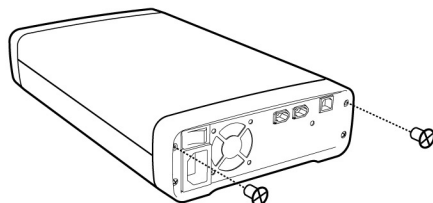
4. Refer image 1 to fix CD-ROM, DVD-ROM, HardRack with lock butts and image 2 is for fixing 3.5inch HDD.



5. Fix the upper side to FCD-524 main frame.



6. Fix 2 lock screws to the main frame.



■ **Note :** Let the jumper of CD-ROM/RW to Master(MA).

LG CD-RW with 4X, 8X, 12X supposed to be slave(SL)