

# iQ MINI

EXPANDABLE TO 2-DOG SYSTEM

## Owner's Manual

Please read this manual thoroughly before operating the iQ MINI training e-collar.



## **IMPORTANT SAFETY AND PRODUCT INFORMATION**

### **WARNING**

**Please read all safety and product information below before using your Dogtra product. Failure to follow these safety instructions could result in injury to you, your dog and others, or it could result in damage to your Dogtra product or other property.**

### **PRODUCT SAFETY Training Methods**

Dogtra products may be used with a variety of training methods. However, each dog may have a different reaction

to training methods and to Dogtra products. Closely observe your dog when determining the right training method to use with your Dogtra product.

### **Aggressive Dogs**

Do not use Dogtra products with aggressive dogs as such dogs may react adversely and cause injury to people or other dogs. Seek the assistance of a dog-training specialist or veterinarian when dealing with aggressive dogs.

### **Children**

Dogtra products are not toys. Adult supervision and close attention are necessary when Dogtra products are used by or near children.

## **PRODUCT DAMAGE**

### **Electrical Product**

Your Dogtra product contains electrical components and batteries. Do not use or keep your product near heat or flammable sources. Such use or storage may damage your product and/or cause fire, explosion, injury, or property damage.

### **Medical Device Interference**

Dogtra products contain electrical and magnetic components that emit low level electromagnetic waves and radio frequencies. These electromagnetic waves or radio frequencies may interfere with pacemakers, defibrillators, or

other medical devices. Consult your physician or medical device maker before using your medical device with a Dogtra product. If you think that your Dogtra product is interfering with your pacemaker, defibrillator, or other medical device, stop using the Dogtra product.

### **Inadvertent Activation**

The digital microprocessor offers thousands of unique codes to eliminate frequency match-up with other Dogtra e-collars. The Constant button will automatically shut down after being held down for 12 seconds or more as a safety feature.

**UNAUTHORIZED USE**

Your Dogtra product should be used only in a humane manner to train and educate your dog. Dogtra products are not intended for use in any other manner nor are they intended for use with other animals or with humans.

**BATTERY**

Your Dogtra product contains batteries. Take care when removing and installing batteries as your fingers may get caught. Dispose of batteries as provided by your local regulations. Do not disassemble, crush, heat, or otherwise alter the battery as it may cause fire, injury or property damage.

**CONTENTS**

AT A GLANCE ..... 6

MAIN FEATURES ..... 7

OVERVIEW ..... 8

UNDERSTANDING YOUR TRAINING SYSTEM

    1. TURNING THE iQ MINI ON/OFF ..... 10

    2. TRANSMITTER BUTTON FUNCTION ..... 11

    3. RECEIVER FITTING ..... 13

    4. FINDING THE RIGHT STIMULATION ..... 15

    5. MAXIMIZING THE DISTANCE ..... 16

    6. LED INDICATOR ..... 17

    7. CHARGING THE BATTERY ..... 18

    8. CODE SETTING ..... 22

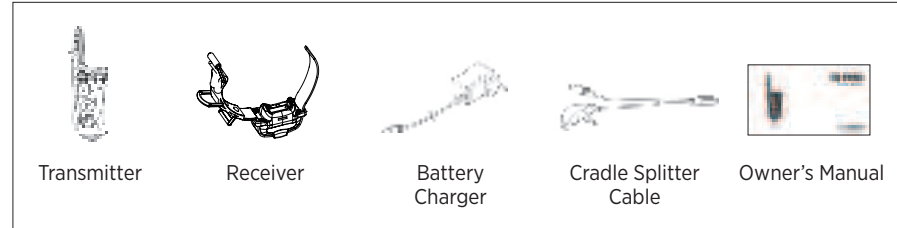
GENERAL TRAINING TIPS ..... 23

MAINTENANCE ..... 25

TROUBLESHOOTING GUIDE ..... 26

WARRANTY AND REPAIR INFORMATION ..... 31

## AT A GLANCE



### Optional Accessories

**Auto Charger:** The auto charger for the iQ MINI has an input of 12-volts to 24-volts and has an output of 5-volts 1000mAh.

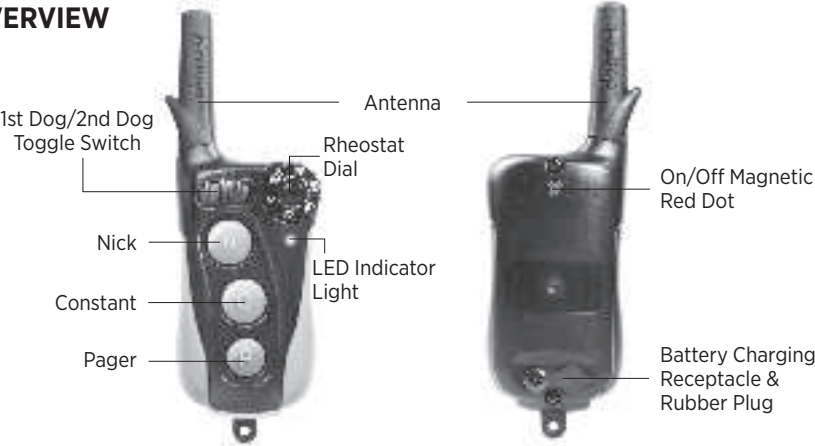
**European Charger:** designed for use with 220 volt AC electrical outlets in Europe.

To purchase optional accessories, please visit [www.dogtra.com](http://www.dogtra.com) or call our customer service at (888) 811-9111.

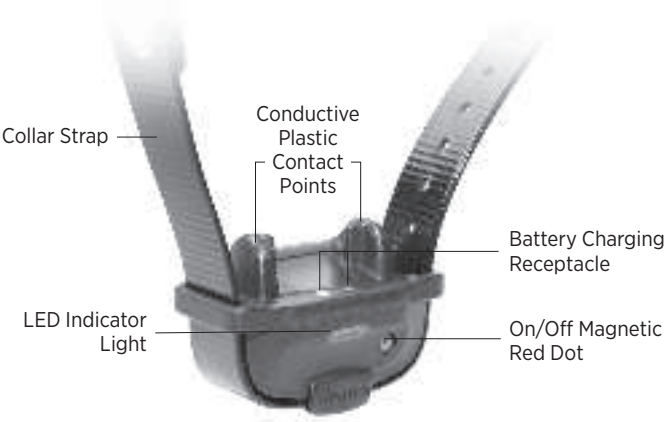
## MAIN FEATURES

- Easy-to-use, ergonomically fitted transmitter
- Front-facing Rheostat Dial that allows for gradual adjustments in stimulation intensity with no jumps between levels (0-100)
- Expandable to 2-dogs
- 400-yard range
- Nick/Constant stimulation & Pager vibration
- 2-hour rapid charge batteries
- 1.3 oz. petite receiver
- Conductive plastic contact points for sensitive skin
- For dogs as small as 7 pounds
- IPX9K waterproof certified receiver

OVERVIEW



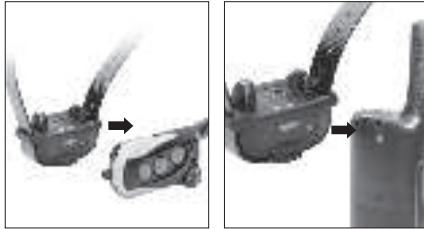
**iQ MINI**  
Transmitter



**iQ MINI**  
Receiver

## UNDERSTANDING YOUR TRAINING SYSTEM

### 1. Turning the iQ MINI On/Off



To turn the receiver on, place the red dot on the back of the handheld transmitter to the red dot on the receiver. Hold the two red dots together for a moment until the LED light on the receiver comes on.

To turn the receiver off, repeat the same procedure holding the two red dots together momentarily. The LED light will turn red for a brief moment indicating that the receiver is now off.

The handheld transmitter does not have an on/off button and it will only activate when the buttons are pressed.

### 2. Transmitter Button Function



#### **N - Nick Button**

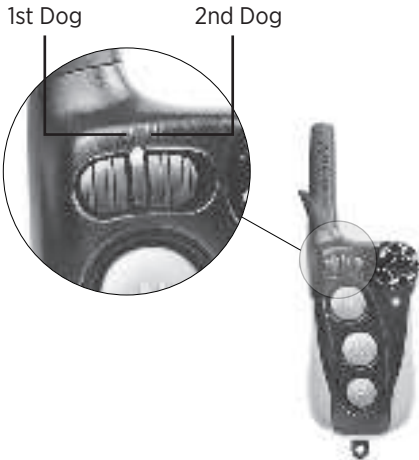
When the Nick button is pressed, the receiver emits a single rapid pulse of electrical stimulation.

#### **C - Constant Button**

Pressing the Constant button gives continuous stimulation as long as the button is pressed, for up to 12 seconds. If the button is not released after 12 seconds, the stimulation will automatically turn off as a safety feature.

#### **P - Pager Button**

Pressing the Pager button will give a vibration for as long as the button is pressed, for up to 12 seconds.



### 1st Dog/2nd Dog Toggle Switch

The 1st Dog/2nd Dog Toggle Switch is on the left of the Rheostat Dial.

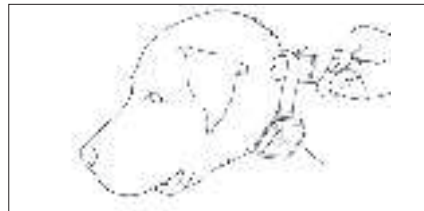
#### I - 1st Dog

Slide the switch to the left underneath "I" and press any of the buttons to operate the first receiver.

#### II - 2nd Dog

Slide the switch to the right underneath "II" and press any of the buttons to operate the second receiver.

### 3. Receiver Fitting



#### Proper Fit

The receiver should be fitted so that the conductive plastic contact points press firmly against the dog's skin. You should be able to fit two fingers underneath the collar strap. The best location is on either side of the dog's windpipe.

#### Improper Fit

A loose fit can allow the receiver to move around on the dog's neck. When this happens, the contact points may rub against the skin and cause irritation. If the receiver is too loose, the contact will not be consistent and cause the corrections to be inconsistent. Dogtra uses conductive plastic contact points and anti-microbial plastic to protect the dog's skin.

**Attention!**

Leaving the receiver in the same location on the dog's neck for an extended period of time can cause skin irritation due to the sensitivity from the contact points. If the dog is to wear the receiver for long periods, occasionally reposition the receiver every few hours so that the contact points are moved to a different location on the dog's neck and remove the receiver after 8 hours of usage. Make sure you check for skin irritation each time you use the unit.

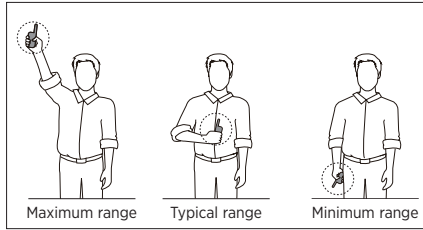
**4. Finding the Right Stimulation**

The iQ MINI has a Rheostat Dial on the front of the transmitter (0 is the lowest and 100 is the highest). Remember that you will need to adjust the setting (upward or downward) depending on your dog's temperament and threshold for stimulation. Always start at the lowest level and work your way up. The appropriate level can be found when the dog responds to the stimulation with a mild reaction. Also, as the dog's attitude changes, especially during times of increased excitement or distraction, you may need to adjust the intensity level.

**Note:** The stimulation intensity can be adjusted even when the stimulation is in use.



## 5. Maximizing the Distance



The iQ MINI has a 400-yard range. Depending on the way you use your transmitter, the transmitter range may vary.

To get the greatest range, hold the transmitter away from your body and avoid touching the antenna. Keep your unit properly charged for maximum signal strength.

## 6. LED Indicator



The LED indicator flashes every 4 seconds when the receiver is on and ready for use. The LED indicator will light up on both the transmitter and the receiver when the transmitter buttons are pressed.



The LED color indicates battery life level.

**Green = Full charge**

**Amber = Medium charge**

**Red = Needs charge**

If the unit is used while the LED indicator is red, it may shut down automatically.

## 7. Charging the Battery



The Dogtra iQ MINI uses a lithium polymer battery. Recharge the unit if the indicator light is red or does not come on, or the system will not stay on when any button is pressed.

**NOTE 1:** Only use Dogtra-approved batteries, chargers, and accessories for your Dogtra e-collars. This will prevent any damage that can be incurred from attempting to use a different charger.

**NOTE 2:** The unit has a partial charge when it leaves the Dogtra facility. Upon receipt of the system, be sure to give it a full 2-hour initial charge before the first use away from any flammable substances.

**NOTE 3:** When a charger is not in use, disconnect it from the power source. Fully charge the batteries if the unit is to be stored without use for a period of 3 months or more.

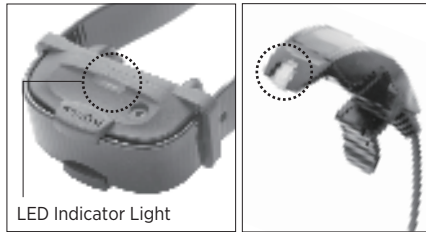
### **Follow the steps below to charge your system:**

1. Open the rubber plug on the battery charging receptacle on the transmitter and plug in the charging cable. To charge the receiver, use the cradle charger and attach it using the instructions on the following page.
2. Plug the charger into a 120-volt wall outlet or, if using the auto charger, plug into a cigarette lighter only for lithium polymer batteries (use a 220

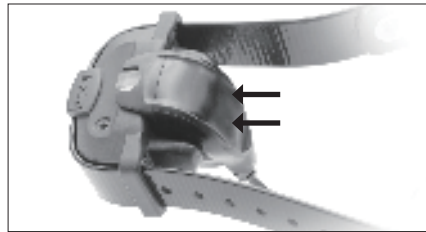
volt European charger for Europe). All indicator lights should glow red when properly charging and the unit will automatically shut off during the charging process. You will need to turn the unit on again before use once the unit is fully charged and unplugged from the battery cable.

3. The lithium polymer battery is fully charged within 2 hours. The lights will stay red during the charging process and turn green once the unit is fully charged.
4. After charging, cover the battery charging receptacle on the transmitter with the rubber plug and detach the cradle charger from the receiver.

**⚠ Attention!** To attach the charger:

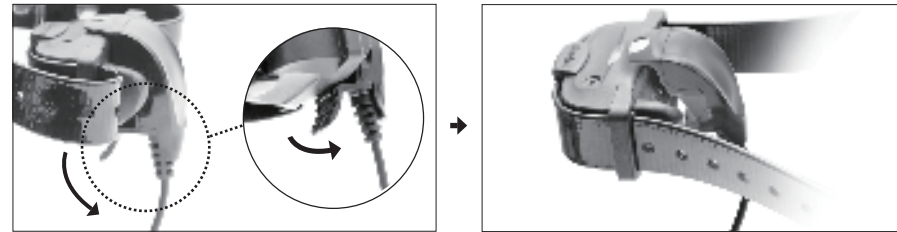


1. Align the clear plastic piece on the charger to the LED screen on the receiver.



2. Press the charger onto the receiver until you hear a snap to secure the placement.

To detach the charger:



3. Pull on the tab at the bottom of the charger to remove it from the receiver.

## 8. Code Setting

### Coding the 1st Dog Position:

1. Set the Rheostat Dial to 0 and place the toggle switch in “I” position.
2. With the receiver turned off, place the red dot on the back of the transmitter to the red dot on the receiver. Hold the two red dots together for about 5 seconds until the green LED blinks rapidly on the receiver.
3. While the green LED is rapidly blinking on the receiver, separate the two devices and press the two top buttons (Nick & Constant) simultaneously on the transmitter. The LED light on the receiver will blink every 4 seconds when coding is complete.

### Coding the 2nd Dog Position:

1. Set the Rheostat Dial to 0 and place the toggle switch in “II” position.
2. With the receiver turned off, place the red dot on the back of the transmitter to the red dot on the receiver. Hold the two red dots together for about 5 seconds until the green LED blinks rapidly on the receiver.
3. While the green LED is rapidly blinking on the receiver, separate the two devices and press the two top buttons (Nick & Constant) simultaneously on the transmitter. The LED light on the receiver will blink every 4 seconds when coding is complete.

## GENERAL TRAINING TIPS

Your dog must know some basic obedience commands before beginning training with the iQ MINI. A dog learns by first being shown a command, followed by lots of repetition over an extended period. As the dog becomes proficient at these commands, the trainer can introduce distractions and different locations to strengthen them.

### **Obedience Training on the Leash**

Your dog must fully understand the obedience commands (sit, stay, here, heel, and kennel) before using the e-collar for reinforcement of these commands. A leash attached to a

standard collar is used to “teach” the dog the basic obedience commands (here, heel, sit, and stay). A tug on the leash/collar is used to reinforce the command. When the dog complies with the command, use positive reinforcement/praise. Once the dog understands these commands, the e-collar can be used to reinforce them.

### **Beginning E-Collar Training**

When you feel your dog understands the obedience commands on the leash we can now start with the e-collar training. With the dog on the leash and wearing the e-collar, continue with your obedience drills. Apply light stimulation

(Nick or Constant) when a command is given; the stimulation can be removed as the dog complies. Through repetition, the dog learns to perform the command. The final step is the avoidance phase in which the dog learns that he can avoid the stimulation altogether by performing your commands. When these training procedures are complete, the e-collar is used as a reminder when the dog does not comply with your commands at home or in the field. Keep your initial training sessions short and positive as dogs have a short attention span.

### **How Much Stimulation to Use**

Always start with low levels of stimulation and work your way up depending on the disposition of your dog and the given situation. By using the correct amount of stimulation to get your point across, you will have a more controllable environment and a dog that is under less stress. Animals (and humans) perform better in a less stressful environment.

**For more training information, please visit our website at [www.dogtra.com](http://www.dogtra.com).**

## **MAINTENANCE**

### **Basic Maintenance**

Make sure the rubber charging cap is securely in place when the system is in use. After each training session, carefully inspect the unit for any missing parts or damage to the casing. Damaged or broken casing may affect the waterproof guarantee on the unit. After confirming that there is no damage to the casing, rinse the receiver and clean out any dirt or debris.

### **Storage Maintenance**

The iQ MINI should be fully charged before storing for extended periods. While in storage, the unit should be given a full charge once a month and before the first use. Store the units in room temperature. Do not keep the units exposed to extreme climates.

### **Troubleshooting**

If the unit is malfunctioning, please refer to the “Troubleshooting Guide” before sending it to Dogtra for service. If you have any questions or concerns, you may email them to [info@dogtra.com](mailto:info@dogtra.com), or call customer service at (888) 811-9111.

## TROUBLESHOOTING GUIDE

### 1. My dog is not reacting to the system.

- Make sure the receiver and transmitter are on.
- Make sure the collar strap is tight enough so both contact points are touching the dog's skin.
- The contact points may be too short for the dog. Since the contact points on the iQ MINI cannot be replaced, you might need to trim down the hair on the dog's neck so both contact points are touching the dog's skin.
- The intensity level may be too low for your dog. Keep increasing the stimulation until the dog responds,

usually with neck movement, head shaking, looking over its shoulder, etc. (response may be very subtle).

### 2. The LED indicator light comes on, but I do not feel any stimulation.

- You may be testing the system at a lower level. You can test the system by placing both contact points on your inner wrist and slowly increase the level. Your tolerance may be higher than your dogs, which may be why you don't feel the stimulation.
- The battery may be low, check the LED light for battery life.

### 3. The handheld transmitter has no

**range or stimulation is less when the dog is farther away.**

- Check to see if your fingers are touching the antenna as the range may substantially decrease.
- The range indicated on the unit's box is for flat terrain. Heavy brush, trees, hills, or moisture will affect the range of your unit. For best range, hold the transmitter vertically above your head, and/or try moving to higher ground.
- Any electrical conductors will affect the range, such as cars, chain-link dog runs, metal structures, and radio towers. For best results, operate away from these items.

### 4. My units are not holding a charge.

- The batteries might not be charged properly, or the charger, splitter, and the charging port may not be functioning properly. You can send in your charging units to have us inspect them.
- The charging pin may be damaged. Inside the charging port, there is a metal pin that should be standing straight up and stiff. If the pin is wobbling, broken, or missing, you will need to send the unit in to the Repair Department. The charging port must be clean prior to charging; clean the dirt out with a cotton swab and some rubbing alcohol. If the dog is in salt-water, be sure to rinse the receiver

and charging port with clean water.

- If the above does not resolve your issues, contact Dogtra customer service at [info@dogtra.com](mailto:info@dogtra.com) or (888) 811-9111.

### **5. My dog has skin irritation.**

- This may be due to an improper fit or from wearing the unit too long. If your dog exhibits signs of skin irritation, consult with a veterinarian. Once the dog's skin returns to a normal condition, continue to use the receiver and check your dog's neck each time you use the unit.



It has been tested and found to comply with RCM standards.

## **FCC WARNING STATEMENT**

### **PART 15.105**

**Note:** This equipment has been tested and found to comply with the limits for a Class B digital device, pursuant to part 15 of the FCC Rules. These limits are designed to provide reasonable protection against harmful interference in a residential installation. This equipment generates, uses and can radiate radio frequency energy and, if not installed and used in accordance with the instructions, may cause harmful interference to radio communications. However, there is no guarantee that interference will not occur in a particular installation.

If this equipment does cause harmful interference to radio or television reception, which can be determined by turning the equipment off and on, the user is encouraged to try to correct the interference by one or more of the following measures:

- Reorient or relocate the receiving antenna.
- Increase the separation between the equipment and receiver.
- Connect the equipment into an outlet on a circuit different from that to which the receiver is connected.
- Consult the dealer or an experienced radio/TV technician for help.

**PART 15.21**

**Note:** Pursuant to Part 15.21 of the FCC Rules, you are cautioned that changes or modifications not expressly approved by Dogtra could void your authority to operate the device. This device complies with Part 15 of the FCC Rules.

**PART 15.19**

**Note:** Operation is subject to the following two conditions: (1) This device may not cause harmful interference, and (2) this device must accept any interference received, including interference that may cause undesired operation.

**DOGTRA PRODUCT WARRANTY**

**LIMITED WARRANTY**

**For Dogtra Products Purchased from Dogtra Authorized Dealers**

**One-Year Warranty**

Except as otherwise provided below, Dogtra warrants to the original retail purchaser (“You”) that its Dogtra products shall be free of defects in materials and workmanship for a period of one (1) year from the date of purchase (“Warranty”). The Warranty covers the cost of repair (parts and labor) or replacement (if repair is not feasible) of a defective Dogtra product during said one-year period. For such repaired or replaced products, the remaining portion of the original warranty period, or ninety (90) days, whichever is longer, shall apply. Dogtra, at its sole discretion, shall determine whether to repair or replace a product covered by the Warranty.

**Warranty Conditions**

The Warranty is not transferrable and applies to your Dogtra product only if:

- (1) You are the original retail purchaser of the product,
- (2) You bought the product from a Dogtra authorized dealer, and
- (3) You present a receipt or other proof of purchase showing a valid purchase date, the name and address of the authorized dealer, and the purchased product identified by model and/or serial number.

**Warranty Exclusions**

The Warranty does not cover damage, loss, or deterioration to your Dogtra product caused: by misuse, neglect, abuse, or other improper handling of the product; by failure to follow use or care instructions; by use of the product for other than its intended purpose; by accident or natural forces such as fire or flooding; or by normal wear and tear such as scratches to the product surface.

The Warranty also does not cover Dogtra products that: are purchased from non-authorized dealers; are purchased outside of the United States or Canada; have been damaged during shipment (even if Dogtra paid or arranged for shipping); have been modified or tampered with in any



manner; are opened or repaired by anyone other than Dogtra; or have serial numbers that have been altered or defaced.

#### **Sole Warranty**

This Warranty is the only warranty offered by Dogtra for its Dogtra products. Other than said Warranty, Dogtra makes no other representations or warranties whatsoever regarding its products, whether oral or in any product manual, on any packaging, on any website, or in any other written material. No dealer of Dogtra products, nor any employee or agent of Dogtra, is authorized to make any additions, changes, or extensions to the Warranty. Dogtra, at its sole discretion and at any time, reserves the right to modify the Warranty.

#### **DISCLAIMER OF OTHER WARRANTIES**

**THE FOREGOING WARRANTY IS PROVIDED IN LIEU OF ALL OTHER WARRANTIES, WHETHER EXPRESS OR IMPLIED. DOGTRA DISCLAIMS ANY IMPLIED WARRANTIES INCLUDING, BUT NOT LIMITED TO, THE IMPLIED WARRANTIES OF MERCHANTABILITY AND FITNESS FOR A PARTICULAR PURPOSE.**

#### **Limitation of Remedies**

Dogtra's liability is limited to the cost of repair or replacement of the Dogtra product under Warranty. Any claim or action to enforce the Warranty must be commenced within thirty (30) days of the Warranty's expiration for your product. Dogtra will not be liable for any indirect, incidental, special, consequential, or similar damages based on breach of warranty, breach of contract, negligence, strict tort, or any other legal theory related to Dogtra and its products. Damages that Dogtra will not be responsible for include, but are not limited to: loss of income or profits; loss of revenue or savings; loss of use of the product or associated products; cost of any substitute products or services; inconvenience, downtime, or any other time; loss of goodwill; claims of third parties including customers; and damage to property.

#### **Legal Rights May Vary By State or Jurisdiction**

The Warranty gives You specific legal rights, and You may also have other rights which vary by state or jurisdiction. Some states or jurisdictions do not allow certain limitations of implied warranties or of incidental or consequential damages or other remedies, so certain of the foregoing limitations may not apply to You.

If any portion of the Warranty is held by a court to be invalid or unenforceable, the remaining portions of the Warranty shall remain in full force and effect and shall in no way be affected or invalidated, and the invalid or unenforceable portion shall be modified so as to most nearly achieve the intent of the Warranty.

#### **Product Registration**

Dogtra recommends that customers register their products as soon as possible after purchase. Product registration will facilitate any future warranty service. You may also receive useful information and updates about your existing and future Dogtra products. To register your product, visit [\*\*www.dogtra.com/product-registration\*\*](http://www.dogtra.com/product-registration). If your product is not registered with Dogtra, You will be required to provide a receipt or other proof purchase (as provided above) to qualify for warranty service.

#### **How to Obtain Warranty Service**

Should your Dogtra product require warranty service, please contact Customer Service by phone or email for a warranty evaluation (see below for contact information). Upon approval of your warranty work, Dogtra will repair or replace (at Dogtra's election) your product without charge for labor or

parts. You are responsible for shipping, including cost, of your product to Dogtra for warranty service. Dogtra will handle shipping, including cost, of the repaired or replaced product back to customers in the USA. Dogtra will not be responsible for shipping, including cost and/or applicable taxes or fees, for products sent to Canada. Such costs, taxes, or fees will be borne by the customer.

To register your product, visit [\*\*www.dogtra.com/product-registration\*\*](http://www.dogtra.com/product-registration).

#### **Dogtra Customer Service**

12322 Monarch Street, Garden Grove, CA 92841  
(888) 811-9111  
[repair@dogtra.com](mailto:repair@dogtra.com)  
Mon – Fri, 8:00 AM to 4:30 PM (PST)

© 2021 Dogtra. All rights reserved.

