

QUICK START GUIDE

Read this manual carefully and save it for future reference.

Disclaimer: The products, accessories, user interfaces, etc. illustrated in this guide are intended for reference only. Due to product updates, the actual product and the illustrations in this guide may vary.

GET BETTER SECURITY WITH Cam Plus

Record Full-Length Videos

Get unlimited full-length video recordings.

Smart AI Detection

Detect people, packages, vehicles, and more.

Back-to-Back Event Recording

Capture everything without 5-minute gaps.

Exclusive Discounts

Get exclusive discounts on Wyze products.

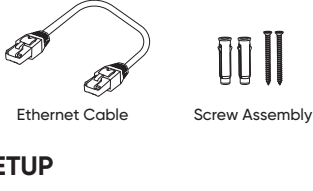
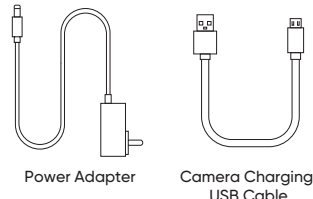
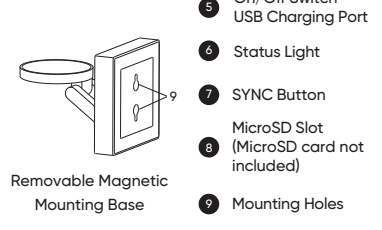
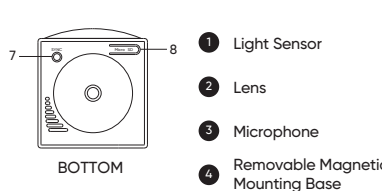
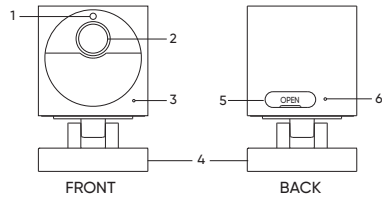
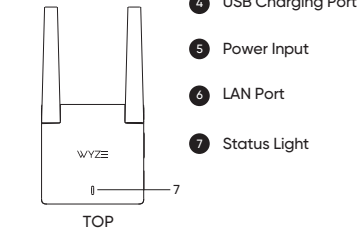
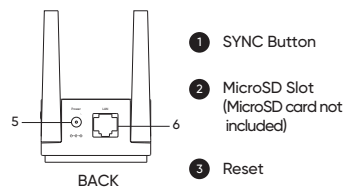
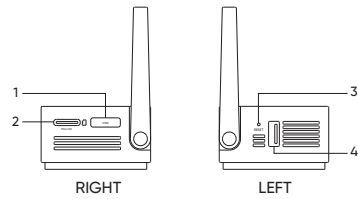
Subscribe or learn more at services.wyze.com.

IN THE BOX

- Wyze Cam Outdoor v2 × 1
- Wyze Base Station × 1
- Base Station Power Adapter × 1
- Base Station Ethernet Cable × 1
- USB Charging Cable × 1
- Screw Assembly × 1
- Quick Start Guide × 1

CONTAINS A LITHIUM ION BATTERY

Do not replace the battery in your Wyze Cam Outdoor. Do not use any battery other than the one that came in your Wyze Cam Outdoor. Use of a replacement battery may cause the product to overheat, catch fire, or explode, which could result in serious personal injury, death, or damage to nearby property. Do not improperly dispose or discard. Lithium-ion batteries should be recycled. For information on how you can recycle the product at no cost, visit wyze.com/recycle.



SETUP

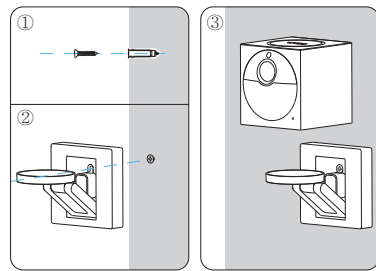
➤ Download the Wyze app and sign in or create an account.



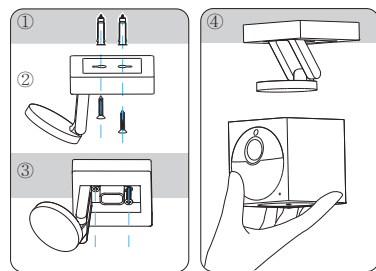
➤ Open the Wyze app and tap the + sign in the top left corner of the Home tab. Follow the in-app instructions to set up the base station and camera.

➤ Follow the along in the app to mount the camera.

WALL MOUNT



CEILING MOUNT










STATUS LIGHT GUIDE

WYZE BASE STATION

-  **Solid yellow light**
The device is powered on and initializing
-  **Flashing yellow and blue lights**
The device is pairing with the camera
-  **Flashing blue light**
The device is connecting to the network
-  **Solid blue light**
The device is working properly

WYZE CAM OUTDOOR

-  **Solid yellow light**
The device is powered on and initializing
-  **Flashing yellow and blue lights**
The device is pairing with the base station
-  **Flashing blue light**
The device is connecting to the network
-  **Solid blue light**
The device is working properly
-  **Flashing red light**
The device is charging
-  **Solid red light**
The device is fully charged
-  **No indicator light**
The device is powered off or asleep

PRECAUTIONS

- Prolonged direct sunlight can heat the inside of your camera past its maximum operating temperature of 122°F (50°C). Avoid directly sunlight where possible and only use your camera in environments within its operating temperature range: -4° to 122°F (-20° to 50°C).
- To charge your camera, plug the included micro USB cable into the USB port on your base station and connect it to your camera. Or use a power adapter and cable that will provide 5V/2A power.

FCC WARNING

Any changes or modifications not expressly approved by the party responsible for compliance could void the user's authority to operate this equipment. This device complies with part 15 of the FCC Rules. Operation is subject to the following two conditions: (1) This device may not cause harmful interference, and (2) This device must accept any interference received, including interference that may cause undesired operation. This equipment has been tested and found to comply with the limits for a Class B digital device, pursuant to Part 15 of the FCC Rules. These limits are designed to provide reasonable protection against harmful interference in a residential installation. This equipment generates, uses, and can radiate radio frequency energy and, if not installed and used in accordance with the instructions, may cause harmful interference to radio communications. However, there is no

guarantee that interference will not occur in a particular installation. If this equipment does cause harmful interference to radio or television reception, which can be determined by turning the equipment off and on, the user is encouraged to try to correct the interference by one or more of the following measures:

- Reorient or relocate the receiving antenna.
- Increase the separation between the equipment and receiver.
- Connect the equipment into an outlet on a circuit different from that to which the receiver is connected.
- Consult the dealer or an experienced radio/TV technician for help.

FCC RADIATION EXPOSURE STATEMENT

This equipment complies with FCC radiation exposure limits set forth for an uncontrolled environment. This equipment should be installed and operated with minimum distance 20 cm between the radiator and your body. This transmitter must not be co-located or operating in conjunction with any other antenna or transmitter.

ISED RADIATION EXPOSURE STATEMENT

This equipment complies with ISED RF radiation exposure limits set forth for an uncontrolled environment. This transmitter must not be co-located or operating in conjunction with any other antenna or transmitter. This equipment should be installed and operated with minimum distance of 20 cm between the radiator and your body. Any changes or modifications not expressly approved by the party responsible for compliance could void the user's authority to operate the equipment.

Cet appareil est conforme aux limites d'exposition de rayonnement RF ISED établies pour un environnement non contrôlé. Cet émetteur ne doit pas être co-implanté ou fonctionner en conjonction avec toute autre antenne ou transmetteur. Cet équipement doit être installé et utilisé avec une distance minimale de 20 cm entre le radiateur & votre corps. Tous changements ou modifications non expressément approuvés par la partie responsable de la conformité peut annuler l'autorité de l'utilisateur à opérer l'équipement.

ISED RSS WARNING

This device complies with ISED licence-exempt RSS standard (s). Operation is subject to the following two conditions: (1) this device may not cause interference, and (2) this device must accept any interference, including interference that may cause undesired operation of the device.

Le présent appareil est conforme aux CNR d'ISED applicables aux appareils radio exempts de licence. L'exploitation est autorisée aux deux conditions suivantes:
(1) l'appareil ne doit pas produire d'interférence, et
(2) l'appareil doit accepter tout interférence radioélectrique subi, même si l'interférence est susceptible d'en compromettre le fonctionnement.

WARRANTY INFORMATION

Your Wyze product is covered by a one-year limited warranty. You can view the limited warranty terms at <https://wyze.com/return-warranty-policy> or request a copy by contacting Wyze at +1 (206) 339-9646.

Apple logo and App Store are trademarks of Apple Inc., registered in the U.S. and other countries and regions. Google Assistant, Google Home, Google Play, and the Google Play logo are trademarks of Google LLC.

NEED HELP?

Contact our Support Team:
<https://wyze.com/support>
Join the Community:
<https://wyze.com/community>



Scan the QR code to learn more

Wyze and Wyze Cam Outdoor v2 are trademarks of Wyze Labs, Inc.

Scale 1:1 Unit:mm

产品名 ▶ 室外机2代快速指南

印刷颜色 ▶ CMYK

物料材质 ▶ 105g无光铜

审核 ▶

设计于 ▶ 于树媛

成品尺寸 ▶ 55*100mm (5折6页)

特种工艺 ▶ 风琴折

批准 ▶

WYZE

型号:WVODV2B1

规格:WVODV2B1-
KSZP01 V1.0

物料编码:

UPC:

样品

样品数量 ▶