

Carbon Monoxide Alarm


User Manual

Mdel Tybe: PG C10

This user manual contains important information regarding the installation and operation of your carbon monoxide alarm.Please take a few minutes to thoroughly read this manual which should be saved for future reference.If you are installing the carbon monoxide alarm for use by others,you must leave this manual—or a copy of it—with the end user.

Introduction

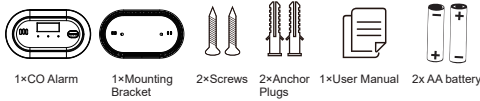
This device is a battery-powered standalone CO (carbon monoxide) alarm with an advanced electrochemical sensor for domestic use.Please note that this device does not detect smoke,heat,flames or any hazardous gas other than carbon monoxide even though carbon monoxide can be generated by fire.For this reason you must install smoke alarms to provide early warning of fire and to protect you and your family from fire and its related hazards.

-  **WARNING**
- THE INSTALLATION OF THE APPARATUS SHOULD NOT BE USED AS A SUBSTITUTE FOR PROPER INSTALLATION,USE AND MAINTENANCE OF FUEL-BURNING APPLIANCES INCLUDING APPROPRIATE VENTILATION AND EXHAUST SYSTEMS.
 - THIS APPARATUS IS TO BE INSTALLED BY A COMPETENT PERSON.
 - IT IS NOT TESTED FORUSE IN A CARAVAN OR BOAT.

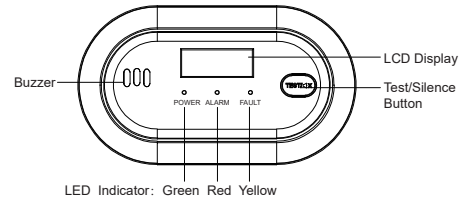
— 01 —

Package Contents

(subject to the actual package)



Product Features



Test/Silence Button

The Test/Silence button is used to test the unit's electronics and to silence the unit during an alarm.When testing the alarm weekly, press and hold the test button and you will hear a short beep,indicating that the alarm has entered the test mode.

You should first wake up your alarm by pressing the test button;once the alarm has woken up,the LCD display will activate,then press the test button again until you hear a short beep,indicating that the alarm has entered the test mode .

— 02 —

Please refer to the "Alarm Testing"section for further information.The alarm goes back to the standby mode after testing.

NOTE:After a test has begun,the alarm will sound and the green、red、yellowLED indicator will flash .This does not indicate that CO is present. If you press the test button during an alarm state,the unit will enter the silence mode.

CO Alarm Levels

This carbon monoxide alarm is programmed to sound an alarm at the following CO concentrations within the time periods listed:


CO concentration	Without alarm before	With alarm before
30ppm	120min	-
50ppm	60min	90min
100ppm	10min	40min
300ppm	-	3min

When CO is detected and the alarm sounds,the CO concentration will be displayed on the LCD and a blue backlight will be lit.The LED indicator will flash red and the alarm will issue 3 short beeps,repeating the cycle every 6 seconds.

CO Concentration and Symptoms
The table below shows the effects of different levels of CO poisoning on the body:

— 03 —

Parts per Million(PPM)	Effects on Adults
100	Slight headache,nausea,fatigue (flu-like symptoms).
200	Dizziness and headache within 2-3 hours.
400	Nausea,frontal headache,drowsiness,confusion and rapid heart rate.Risk to life after over 3 hours of exposure.
800	Severe headaches,convulsions,vital organ failures. Death possible within 2-3 hours

-  **WARNING**
- THIS DEVICE IS DESIGNED TO PROTECT INDIVIDUALS FROM ACUTE EFFECTS OF CARBON MONOXIDE EXPOSURE.IT MAY NOT FULLY SAFEGUARD INDIVIDUALS WITH SPECIFIC MEDICAL CONDITIONS. IF IN DOUBT,CONSULT A MEDICAL PRACTITIONER.

Low-Battery Warning

If the battery voltage is low,the unit will chirp once and the LED indicator will flash yellow every 60 seconds to indicate the need for battery replacement. If you press the test button when there is a low battery,the low battery signal will temporarily cease for 12 hours;if you press the test button again,the unit will enter the test mode and then the standby mode.

End-of-Life Indication

Once the maximum lifetime(10 years)is reached,the alarm will deliver 3 beeps and the LED indicator will flash yellow 3 times every 60 seconds.

— 04 —

To help identify the date to replace the alarm,write down the date of first operation on the dedicated label on the side of the alarm.

Where to Install

- Ideally,a carbon monoxide alarm should be installed in every room containing a fuel-burning appliance,and one in every bedroom. However,if the number of carbon monoxide alarms available is limited,the following guidelines should be considered when choosing the best places to install an alarm(s):
- If there is an appliance in a bedroom,a CO monitor should be installed.
 - Install an alarm in rooms containing a flue less or open-flued appliance.
 - Install an alarm where residents spend most of their time
 - Ina studio apartment,a CO alarm should be placed as far away from the cooking appliances as possible,but close to where the person sleeps.
 - If the appliance is in a room not normally used(such as a boiler room),the CO alarm should be placed just outside of this room so that the alarm can be heard more easily.

1.Installing a CO alarm in a room with a fuel-burning appliance (see Figure 1):

— 05 —

- If it is mounted on a wall,it should be installed at a height greater than the height of any door or window,but should still be at east 5.9 inches(150mm)below the ceiling.
- The CO alarm should have a horizontal distance between 3.3 feet(1 m)and 10 feet(3 m)from any potential CO source
- If there is a partition in the room,the CO alarm should be installed on the same side of the partition as the potential CO source.

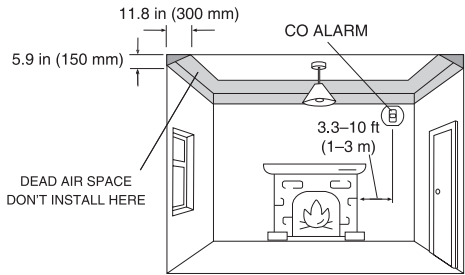


Figure 1: Installation in a room with a fuel-burning appliance

- 2.Installing the CO alarm in a bedroom or room without a fuel-burning appliance (see Figure 2):
- Mount the CO alarm relatively close to the breathing zone of the occupant.
 - Install the alarm such that the LED indicator is viewable when the occupant is near the alarm.

— 06 —

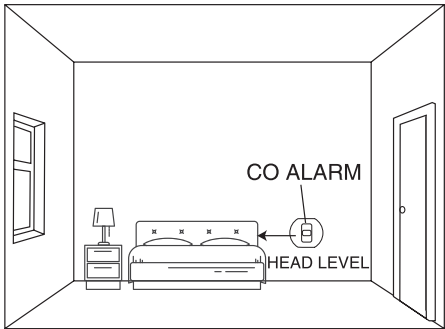


Figure 2: Installation in a bedroom or room without a fuel-burning appliance(installed at head level)

NOTE:Due to the product's unique design and unfixed installation,it is not recommended to install ton a ceiling, as it is prone to falling off and causing injuries to people.

— 07 —

Locations to Avoid
Important Note

Improper location can affect the sensitive electronic components in this alarm.To avoid causing damage to the unit,to provide optimum performance and to prevent unnecessary nuisance alarms,do not locate CO alarms in the following areas:

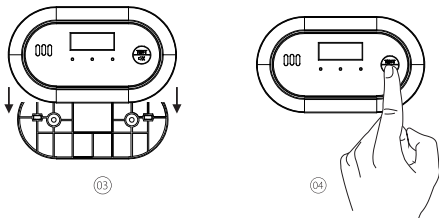
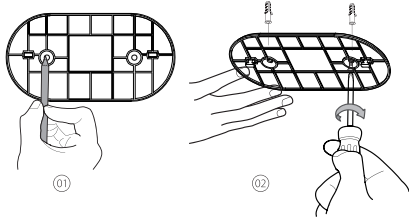
- 1.In garages or in any extremely dusty,dirty or greasy areas.
- 2.Where there is the possibility of smoke or fumes under normal operating circumstances.
- 3.In poorly ventilated kitchens,garages and furnace rooms. Keep the CO alarms at least 5 feet(1.5m)from potential smoke or fume sources (e.g.stoves,furnaces,water heaters,space heaters)if possible.
- 4.In areas where a 5-foot(15m)distance from a potential smoke or fume source is not possible.In modular,mobile or smaller houses,it is recommended the CO alarm be placed as far from any potential smoke or fume sources.
- 5.Within 5 feet(1.5m)of any cooking appliance.
- 6.In extremely humid areas.This alarm should beat least 10 feet (3 m)from a bath or shower,sauna,humidifier, vaporizer dishwasher,laundry room,utility room or other sources of high humidity.
- 7.In areas where the temperature is colder than 40°F(4.4 C) or hotter than 100°F(37.8 C .For example,non-air-conditioned crawl spaces,unfinished attics,uninsulated or poorly insulated ceilings,porches and garages.

8.Where the air is turbulent,such as near ceiling fans,heat vents,air conditioner vents,fresh air return vents,or open windows. Excessive air flow may prevent any CO from reaching the sensors.

9.In direct sunlight.

Installation Method
Wall Mounting

- 1.Choose a suitable installation location by referring to the "Where to Install "section.
- 2.Use the mounting bracket to mark the screw holes on the ceiling or the wall.
- 3.Drill holes at the 2 marks using an appropriately-sized drill bit. Insert the anchor plugs and screw the mounting bracket using the screws provided
- 4.Align the two mounting slots on the back of the unit with the mounting plate to mount and lock the unit to the wall.
- 5.Test the device by pushing the test button to make sure that the device is functioning properly.



Alarm Testing

Be sure to test your CO alarms when you turn them on for the first time.In addition to the weekly test you should perform,it is also recommended to test the alarm after returning from a long trip or vacation.

Operations

- 1) Power On: once power on, the buzzer sounds'Di-', LCD screen turns on displaying'888PPM'. Then 10-seconds preheating starts with LCD screen displaying countdown from 10 to 0,and Green,Red,Yellow indicators blinking simultaneously.Detector enters monitoring status after preheating.
- 2) Monitoring: power indicator flashes once per minute.
- 3) Alarm: LCD displays the CO density, Alarm indicator flashes, buzzer sounds Di Di Di .

- 4) Low Voltage: when the battery is under low voltage, fault indicator flashes once and buzzer sounds Di every 1 minutes.
- 5) Out of range: when density detected exceeds the maximum range, LCD displays 500, RED alarm indicator flashes and buzzer sounds Di Di Di.

TEST/MUTE button

- 1) Auto Test: press TEST button,power indicator, alarm indicator, fault indicator, flashes 4 times simultaneously, buzzer sounds Di Di Di Di. Meanwhile, LCD turns On and displays 888. Press and hold TEST button,buzzer sounds Di Di Di Di periodically, at a sound lever of over 85dB @3m.
 - 2) MUTE again Alarm: press MUTE button to mute the detector when CO density is below 300ppm,mute status lasts 10mins. Mute function disabled when CO density is over 300ppm.
 - 3) MUTE against Fault: in fault status, press TEST button to mute the detector(Fault indicator still flashes). Mute status lasts 12±1hrs and Fault status resumes unless otherwise it's solved.
- Warning: ensure the safety before you use MUTE function.

LCD Display

While detecting CO,the LCD will display different indicators to inform you of the alarm status,as shown below:

Legend	Indication	Description
	Self-checking	Power,Alarm, Fault, indicators blink 4 times simultaneously and buzzer sounds 'Di-Di-Di-Di-', LCD screen turns on, displaying'888'.
	Preheating	LCD screen displays countdown from 10 to 0,and Power,Alarm,Fault indicators blink simultaneously. LCD and indicators turn off after preheating.
FAU	Fault	Fault indicator blinks twice,and buzzer sounds'Di-Di-' at the interval of 60s.
FAU	Low Voltage	Fault indicator blinks once,and buzzer sounds 'Di-' at the interval of 60s.
FAU	Life Over	Fault indicator blinks 3 times,and buzzer sounds 'Di-Di-Di-' at the interval of 60s.
	Crash	Beyond detecting range

Technical Specifications

Working Voltage	DC 3V
Standby Current	<10uA
Alarm Current	<20mA
Detection Range	0~500ppm
Alarm Output	Acoustic and light
Sound Level	85db@3m
Sensor Lifespan	10 years
Temperature Range	-10 C ~55 C
Humidity Range	Max. 95%RH
Installation	wall mounting
In Accordance with	EN50291-1:2018
Dimensions	126*72*33.5mm

What to Do When the Alarm Sounds

- 1.Call emergency services as soon as possible.
- 2.Immediately move outside and make sure that everyone inside the house has evacuated the area or has access to fresh air.Do not re-enter the house until it has been aired out and your alarm remain sunder normal condition. If it is not possible to move outside,stay dose to an open door/window until emergency service responders arrive.

- 3.After following steps 1-2 above,if your alarm reactivates within a 24 hour period,repeat steps 1-2 and calla qualified appliance. technician to investigate sources of CO from fuel-burning equipment and appliances,and inspect for proper operation of this equipment.
- 4.If problems are identified during this inspection,have the equipment serviced immediately.Note any combustion equipment that has not been inspected by the technician and consult the manufacturers instructions,or contact the manufacturers directly form more information about CO safety and this equipment.Make sure that motor vehicles are not,and have not been,operating in an attached garage or adjacent to the residence.

Maintenance

To keep your alarm in good working order,you should adhere to the following steps.

- 1.Test the alarm once a week by pressing the test/silence button.
- 2.Vacuum the alarm cover once a month to remove any accumulated dust
- 3.Never use detergents or solvents to clean the alarm. Chemicals can permanently damage or temporarily contaminate the sensor.
- 4.Avoid spraying air fresheners,hair spray,paint or other aerosols near the alarm.
- 5.Do not paint the unit.Paint may clog the openings to the sensing chamber and prevent the unit from operating properly.

WARNING
DO NOT TAMPER WITH THE APPARATUS,AS THERE IS A RISK OF ELECTRIC SHOCK OR MALFUNCTION. When the product reaches its end of life(10 years),is recommended to discharge the battery to ensure the built-in battery is fully depleted

WARNING
DO NOT DEACTIVATE THE ALARM UNIT UNTIL THE END-OF-LIFE SIGNAL HAS BEEN HEARD.ONCE THE ALARM IS DEACTIVATED,IT WILL NO LONGER FUNCTION.IT CANNOT BE REACTIVATED,AND MUST BE REPLACED.

Battery Replacement

Remove the old battery and replace with a new battery recommended when the LED indicator flashes yellow once every 60 seconds with the buzzer chirping. After changing the battery,the buzzer will beep once,the LCD backlight will light up,and the LED indicator will lash through 5 cycles (yellow/green/red).Reinstall your alarm and test it by pressing the test/silence button

NOTE:Rechargeable batteries are not recommended for use with this device.

Environmental Protection

Waste electrical products should not be disposed of with household waste.Please recycle where facilities exist.Check with Local Authority or retailer for recycling advice.

Date: 2024.8.17			
产品型号	C10	部件名称	英文说明书
设 计		材 料	80克书写纸(正反印)
印刷尺寸	280*200mm		
工 艺		成品尺寸	70*100mm
注： 印刷尺寸：280*200mm，风琴折，成品对折成四等分			

FCC Caution:

This device complies with part 15 of the FCC Rules. Operation is subject to the following two conditions: (1) this device may not cause harmful interference, and (2) this device must accept any interference received, including interference that may cause undesired operation.

Any changes or modifications not expressly approved by the party responsible for compliance could void the user's authority to operate the equipment.

NOTE: This equipment has been tested and found to comply with the limits for a Class B digital device, pursuant to Part 15 of the FCC Rules. These limits are designed to provide reasonable protection against harmful interference in a residential installation. This equipment generates, uses and can radiate radio frequency energy and, if not installed and used in accordance with the instructions, may cause harmful interference to radio communications. However, there is no guarantee that interference will not occur in a particular installation.

If this equipment does cause harmful interference to radio or television reception, which can be determined by turning the equipment off and on, the user is encouraged to try to correct the interference by one or more of the following measures:

- Reorient or relocate the receiving antenna.
- Increase the separation between the equipment and receiver.
- Connect the equipment into an outlet on a circuit different from that to which the receiver is connected.
- Consult the dealer or an experienced radio/TV technician for help.

To maintain compliance with FCC's RF Exposure guidelines, This equipment should be installed and operated with minimum distance between 20cm the radiator your body: Use only the supplied antenna.

FCC ID:2AIT9-PG-C10