

Exhibit 19b : Internal Photographs

SECTION2 .1033 (c) (12)

Photographs (8"x 10") of the equipment of sufficient clarity to reveal equipment construction and layout, including meters, if any, and labels for controls and meters and sufficient views of the internal construction to define component placement and chassis assembly. Insofar as these requirements are met by photographs or drawings contained in the instruction manuals supplied with the product certification request, additional photographs are necessary only to complete the required showing.

RESPONSE:

Digital internal photographs of the **mLAM /FCC ID: AS5ONEBTS-03** showing internal construction and layout are attached.

Exhibit 19: Photograph of mLAM Circuit Board (Front)

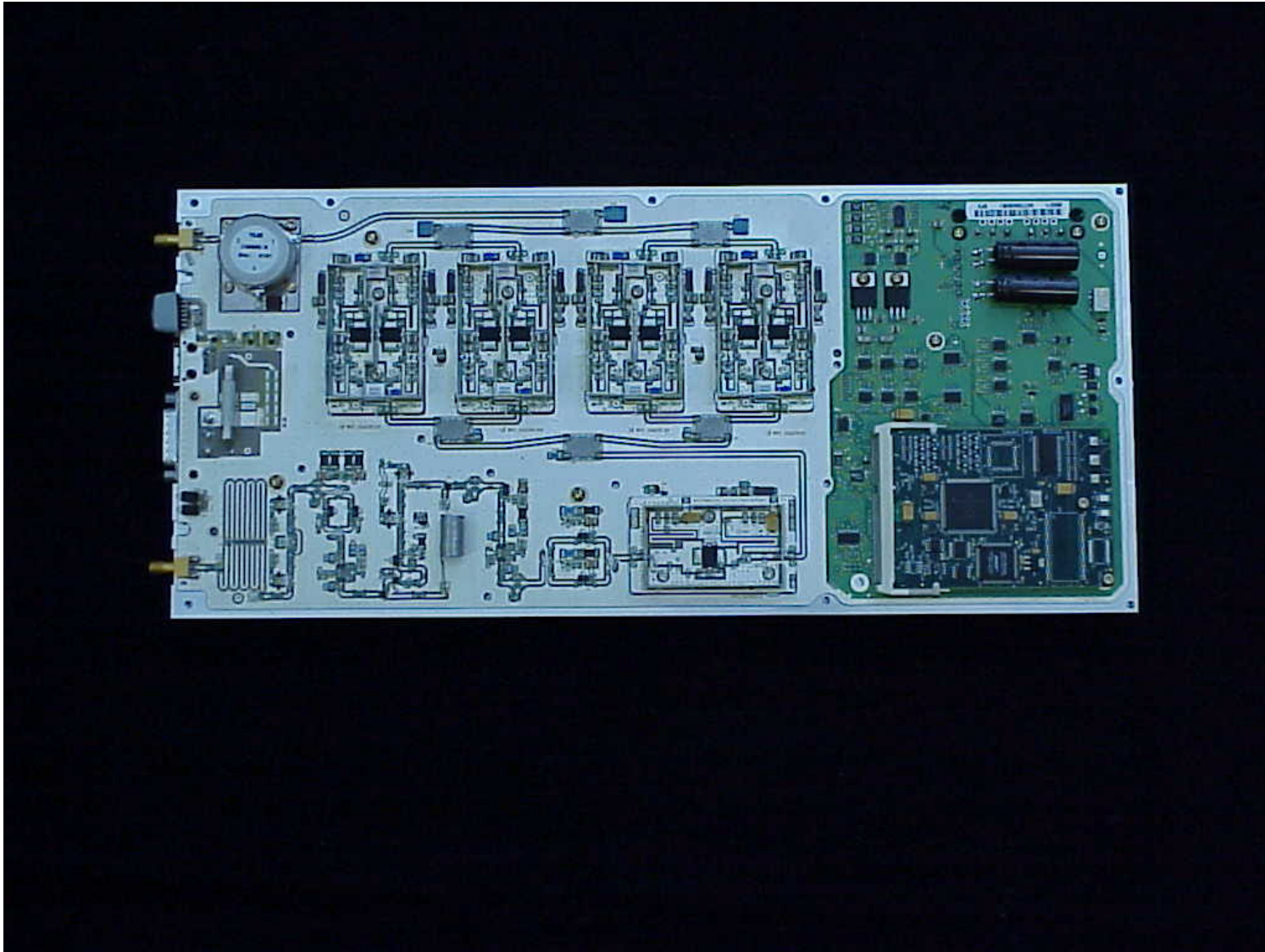


Exhibit 19: Photograph of mLAM Circuit Board (Rear)

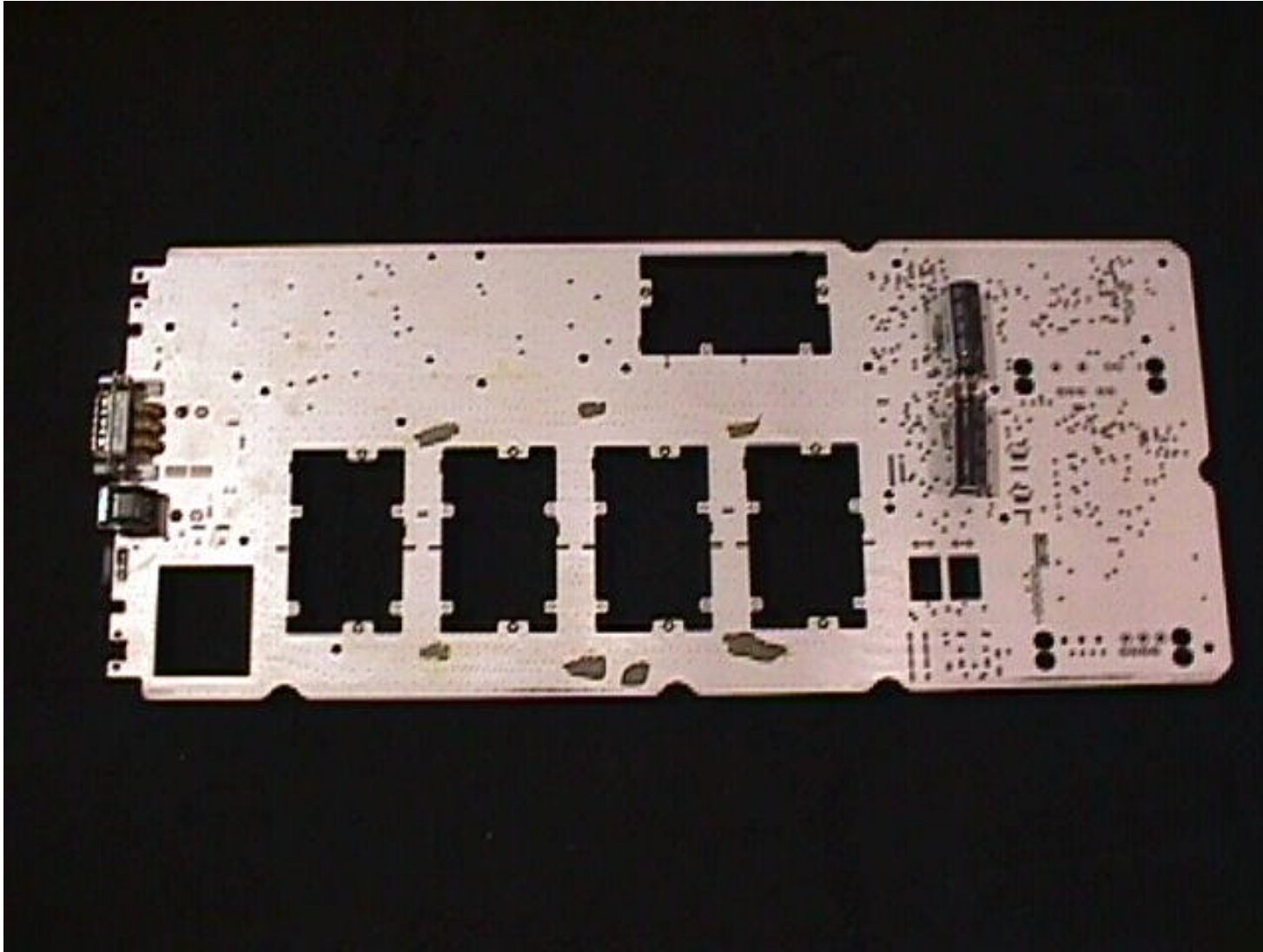


Exhibit 19: Photograph of mLAM Processor Circuit Board (Front)

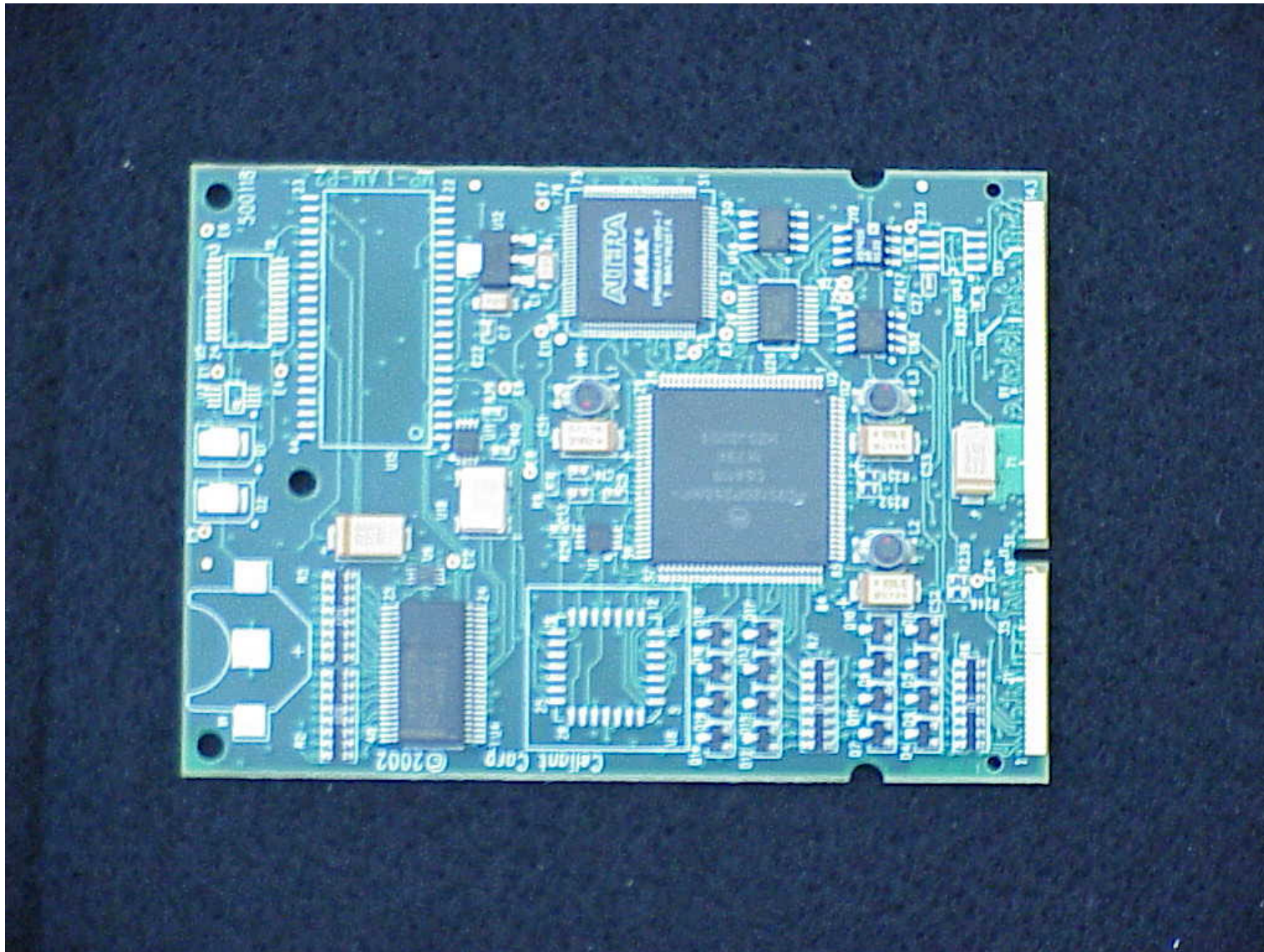


Exhibit 19: Photograph of mLAM Processor Circuit Board (Front)

