

240.00 mm

320.00 mm

Precautions

- Please refer to the following precautions before installing and using this product:
1. Use a power adapter that meets certified standards for power supply.
 2. Ensure that there are no metal foreign objects between the wireless charger and the phone when charging to prevent accidental heating of metal objects.
 3. Avoid placing magnetic cards, such as bank cards and bus cards, in the charging area to prevent damage to the cards.
 4. Wait until the clamp arm is completely clamped before releasing the mobile phone.
 5. Hold the mobile phone first when taking it out to prevent it from falling after the clamp arm is released.
 6. Do not forcefully pull the phone or open the clamp arm.
 7. Avoid bending the hose at a large angle when adjusting it. Refer to the operating instructions diagram to avoid damage and breakage of the hose.
 8. Do not violently rotate the mobile phone holder more than 360° to prevent excessive rotation of the ball head and invalidation of the rotary limit switch.

Features

1. Simple and convenient installation.
2. Wireless charging for leisure, entertainment, and office scenarios.
3. Flexible long snake arm and rotating ball head design to position the phone at the best view angle.
4. Electric clamp arm with physical buttons on both sides, making it easy to operate and preventing accidental touches.
5. 15W wireless charging compatible with all Qi standard mobile phones.

Product Failure Table

Troubles	Cause	Troubleshooting
Wireless Charging Not Working	1.Incorrect power supply 2.Poor power interface contact	1.Replace with correct adapter 2.Re-plug power port
Wireless Charging is Slow	Have significant increase in temperature when wireless charging	Wait until it has cooled down to room temperature, before using the product
Clamp Arm not working	1.Incorrect power supply 2.Foreign object in clamp arm	1.Replace with correct adapter 2.Remove foreign object

Hazardous Substance Declaration

This mark is the product pollution control mark, the number of which represents the environmental service life. In this period of time, under normal conditions of use harmful substances will not cause greater pollution to the environment or damage to human life and property.

Name of parts	Hazardous substance					
	Lead (Pb)	Mercury (Hg)	Cadmium (Cd)	Hexavalent Chromium (Cr(VI))	Polybrominated biphenyls (PBB)	Polybrominated diphenyl ethers (PBDE)
Electronic components	×	○	○	○	○	○
Plastic casing	○	○	○	○	○	○
Electroplated aluminum alloy parts	○	○	○	○	○	○
Non-electroplated metal parts	○	○	○	○	○	○
Double faced adhesive tape	○	○	○	○	○	○
Synthetic cork	○	○	○	○	○	○
Silicon parts	○	○	○	○	○	○

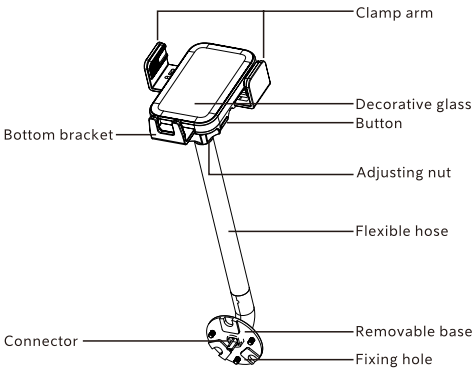
This form is in term of Stipulation SJ/T 11364
O It means that the content of the harmful substance in a part of the part is lower than the limit requirements specified in GB/T 26572.
X It means that the content of the harmful substance in a part of the part exceeds the limit requirements specified in GB/T 26572.



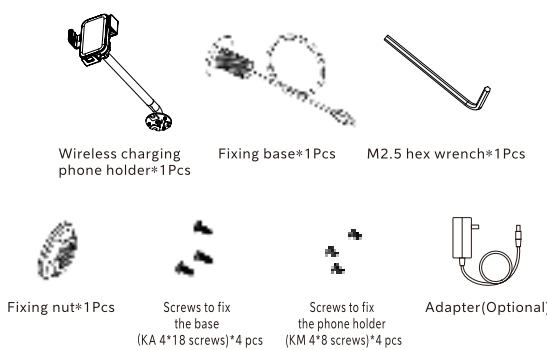
GF-10A Series
Wireless Charging phone Holder
User manual

Product description

1.Product function diagram:

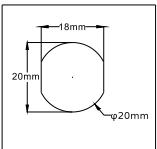


2.Packing list:

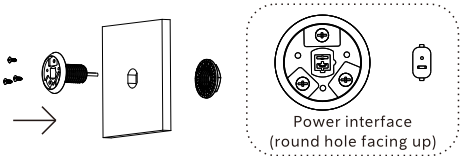


Installation

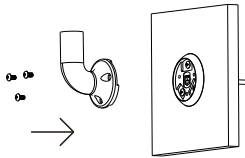
1.The size of the board opening is shown in diagram below, the recommended board thickness is 15-20mm.



2.Insert the female base into the mounting hole of the wooden board, making sure to pay attention to the correct installation direction. Tighten the fixing nut and lock the three screws (KA 4*18).



3.After inserting the male end of the connection base into the female base, tighten the screw (KM 4*8).



Instructions

Mobile phone charging operation:

- After power on, the keys turn on green for 5 seconds and turn off.
- Turn on the device and place your wireless-charging phone on it. The clamp arm will hold it in place and the green lights will blink while charging.
- To remove the phone, press one of the button .Or the clamp arm will close automatically after 5 seconds.
- Put your phone in the clamp arm for non-wireless charging. The indicator light will flash for 5 seconds.

To adjust the bracket:

- Bend the hose to a large angle only.Do not bend locally at small angles. See diagram 1.
- Don't rotate the phone holder more than 360 degrees or it will break. See diagram 2.

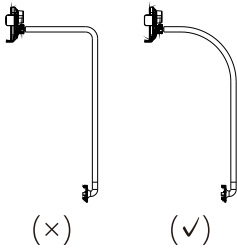


Diagram 1

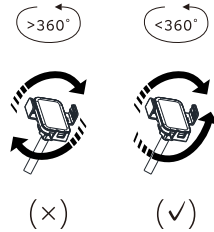
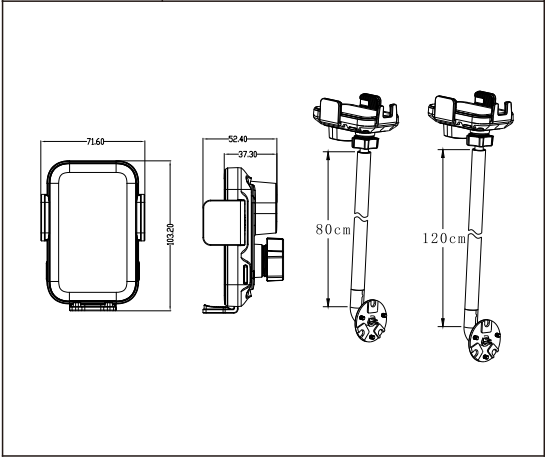


Diagram 2

Specifications

Product name	Wireless Charging phone Holder
Model	GF-10A-38V
Input	DC 12V-36V
Input connector	01 Male
Bracket length	80cm
Wireless charging power	15W Max
Applicable phone width	62mm-88mm



材质工艺要求: 材质: 70g普通书写纸
工艺: 单色双面印刷、风琴折
印刷要求: 色相正确、印迹牢固、套印准确、各色套印不漏杂色、套印误差≤0.1mm
说明书边角为直角、不做R角