



MODEL NUMBER

**CMS2**

**clarion**

12V (-) GROUND

USA: AM530-1710kHz, FM 87.9-107.9MHz

EUROPE: AM531-1602kHz, FM87.5-108.0MHz

AUSTRALIA: AM531-1620kHz, FM87.5-108.0MHz

ASIA: AM531-1620kHz, FM87.5-108.0MHz

This device complies with Part 15 of the FCC Rules. Operation is subject to the following two conditions: (1) This device may not cause harmful interference, and (2) This device must accept any interference received, including interference that may cause undesired operation.

This device complies with Industry Canada licence-exempt RSS standard(s). Operation is subject to the following two conditions: (1) this device may not cause interference, and (2) this device must accept any interference, including interference that may cause undesired operation of the device.

CLARION CORPORATION OF AMERICA  
6200 GATEWAY DRIVE, CYPRESS, CA 90630, USA

MANUFACTURED:

FCC ID: 2AB7S-CMS2

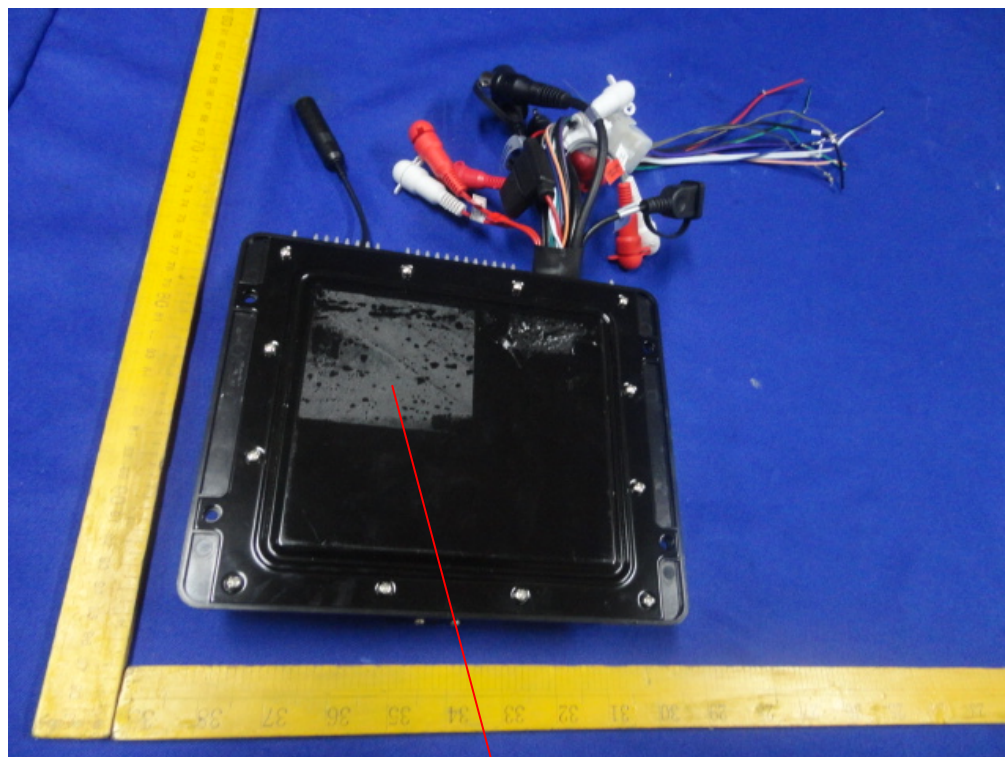
IC ID: 11888A-CMS2

MANUFACTURER: **SMX**

CANICE-S3(\*)/NM B-3(\*)

SERIAL NO.

MADE IN CHINA



Labeling place