

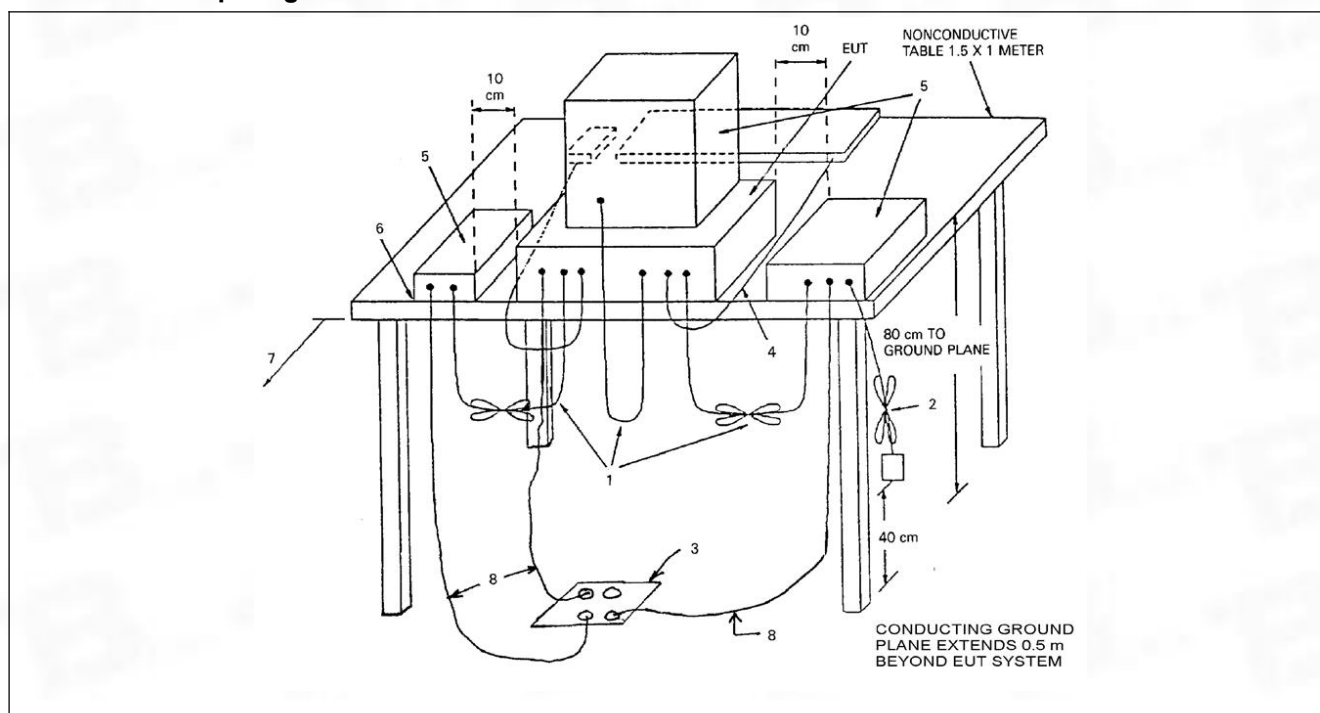
5.3 Radiated emissions (Above 1GHz)

Test Requirement:	15.109, Class B			
Test Method:	ANSI C63.4			
Test Limit:	Frequency of emission (MHz)	Field strength @3m		
		Average (uV/m)	Average (dBuV/m)	Peak (dBuV/m)
	Above 1GHz	500	54	74
Procedure:	<p>An initial pre-scan was performed in the chamber using the spectrum analyser in peak detection mode. For below 1GHz test, Quasi-peak measurements were conducted based on the peak sweep graph. The EUT was measured by BiConiLog antenna with 2 orthogonal polarities. For above 1GHz test, Average measurements were conducted based on the peak sweep graph. The EUT was measured by Horn antenna with 2 orthogonal polarities.</p> <p>Remark: Level= Read Level+ Cable Loss+ Antenna Factor- Preamp Factor</p>			

5.3.1 E.U.T. Operation:

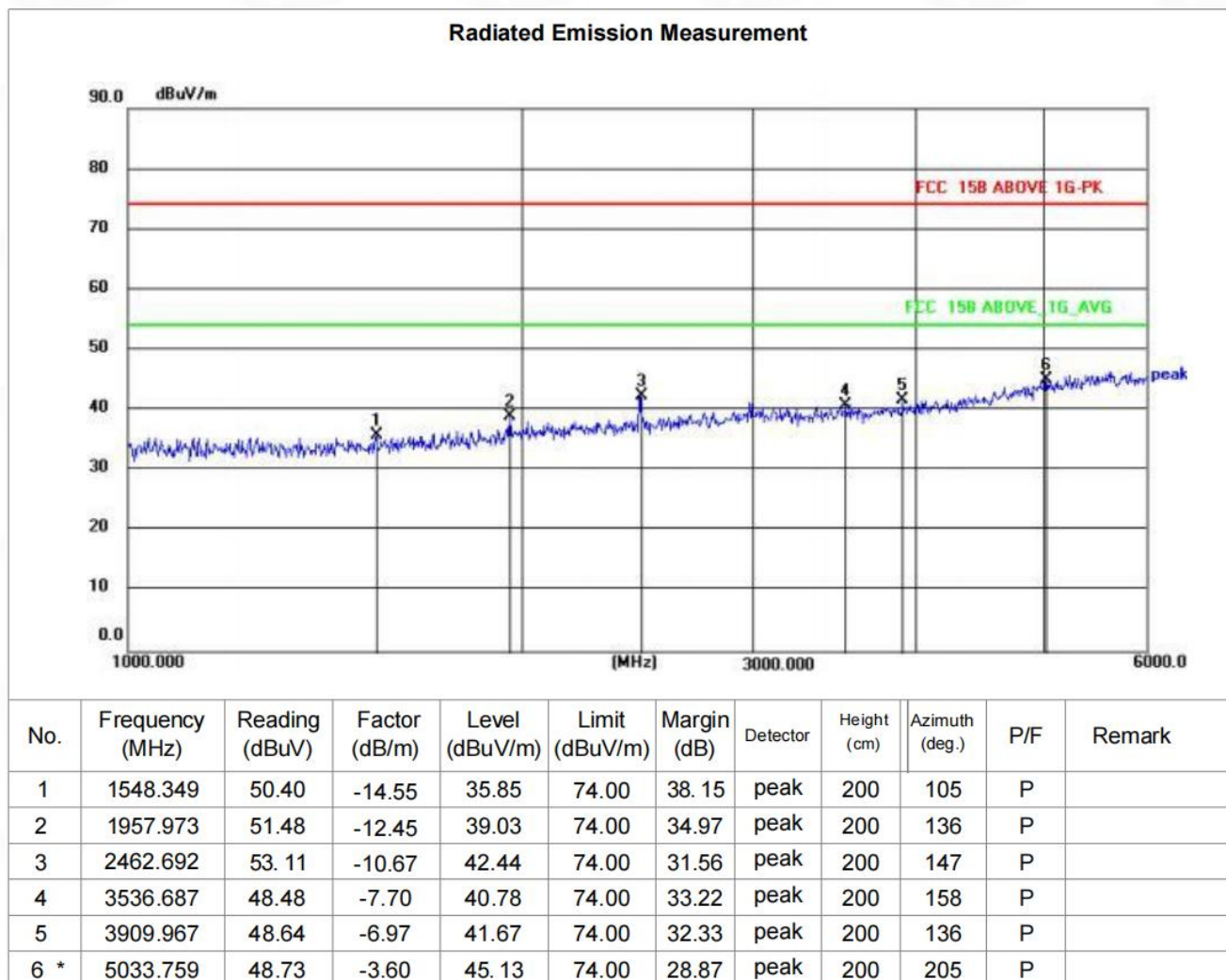
Operating Environment:	
Temperature:	22.2 °C
Humidity:	54.7 %
Atmospheric Pressure:	1010 mbar

5.3.2 Test Setup Diagram:

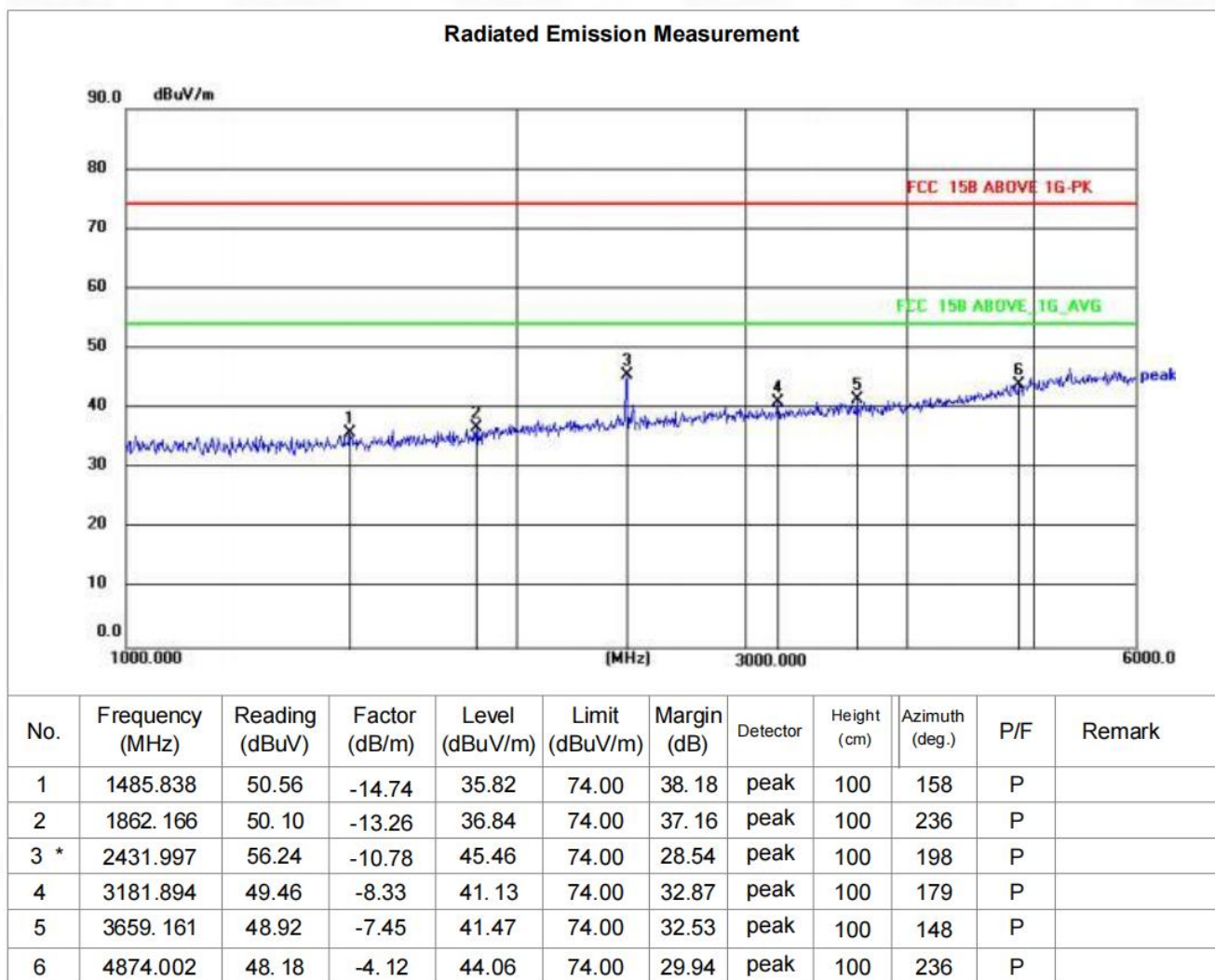


5.3.3 Test Data:

TM1 / Polarization: Horizontal

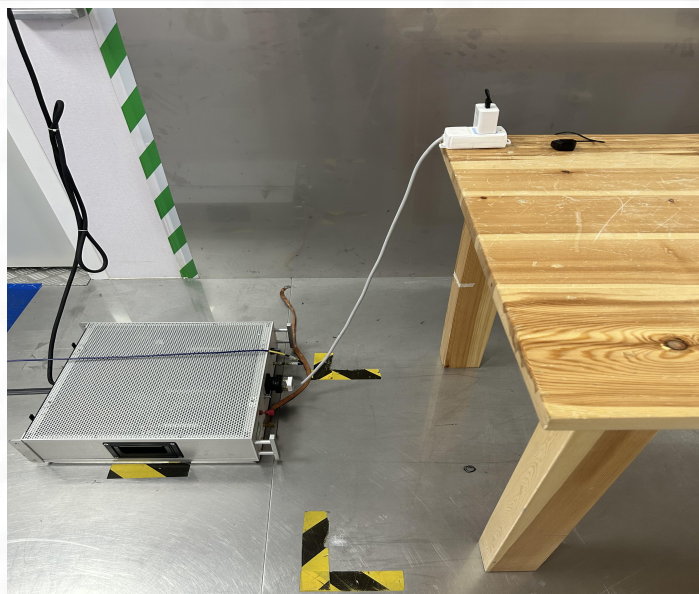


TM1 / Polarization: Vertical

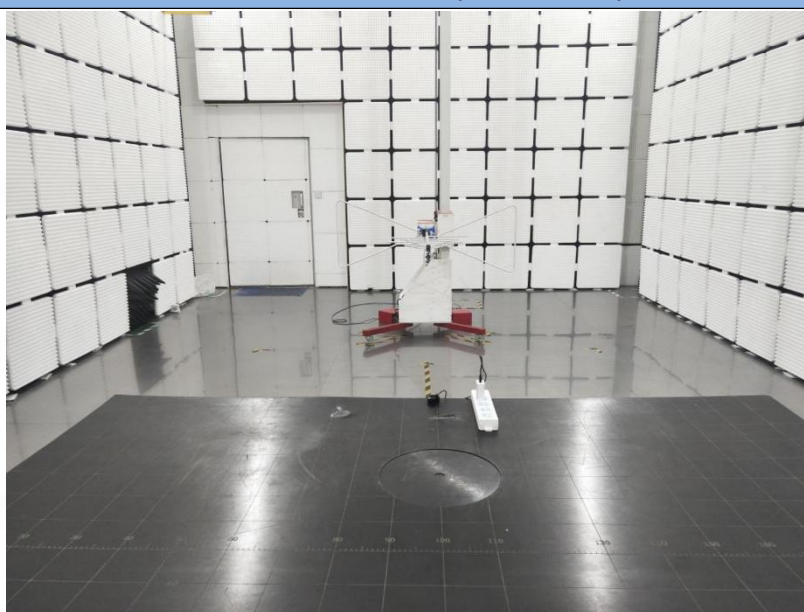


6 Test Setup Photos

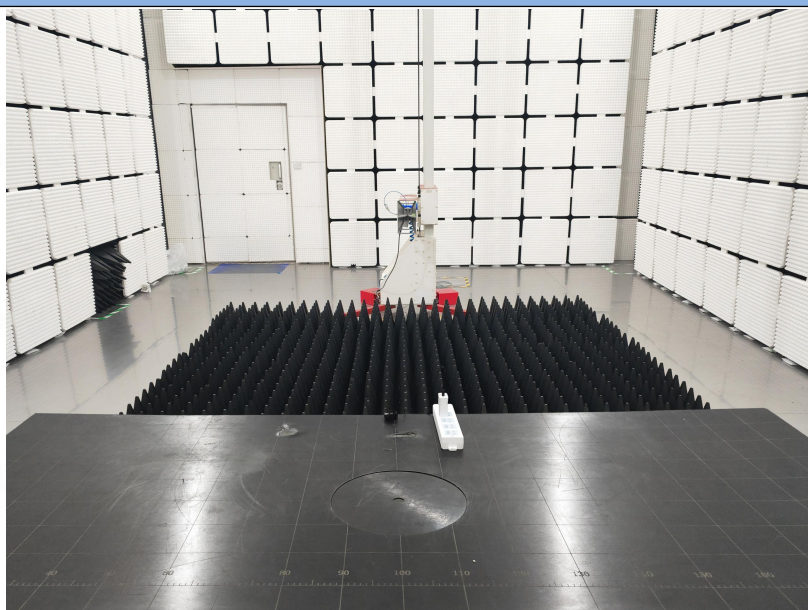
Conducted emissions on AC mains



Radiated emissions (Below 1GHz)

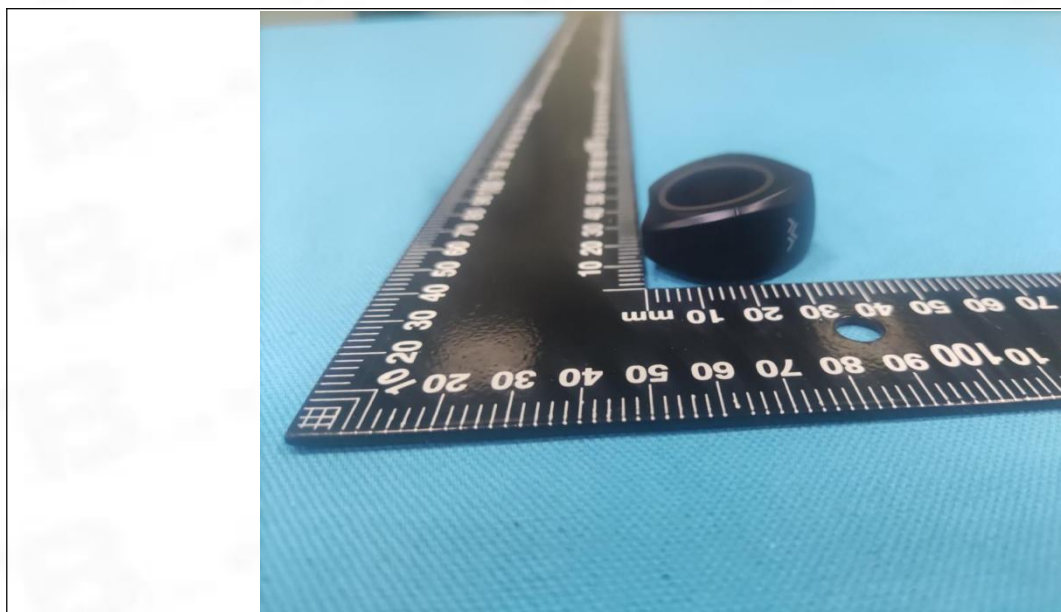


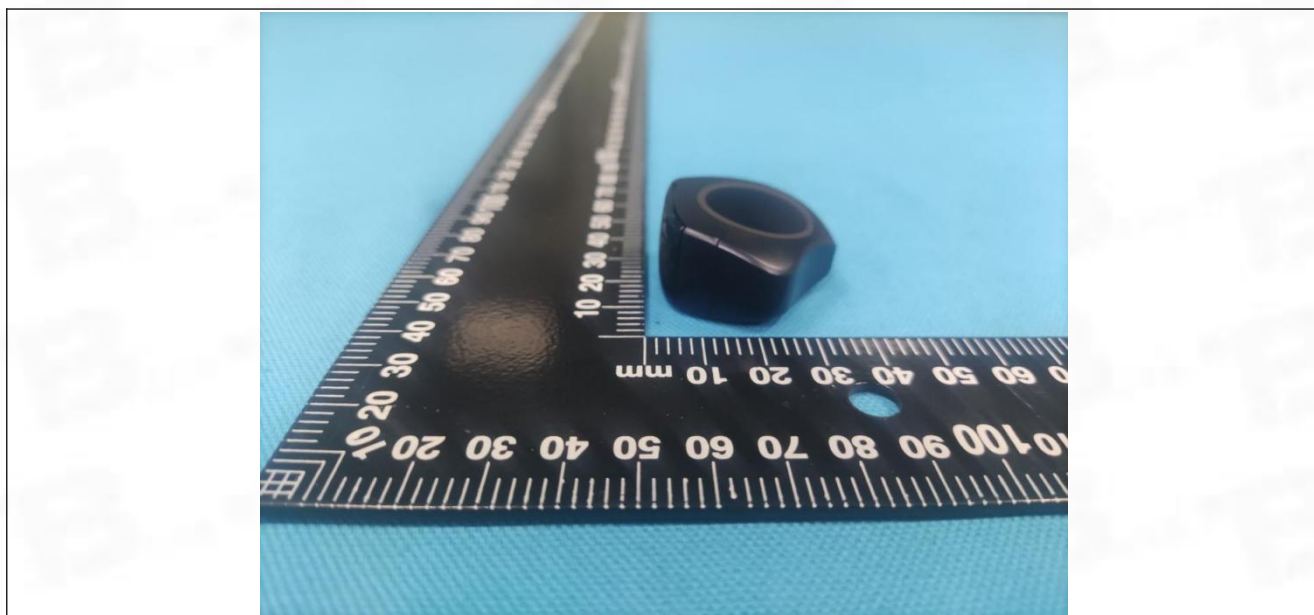
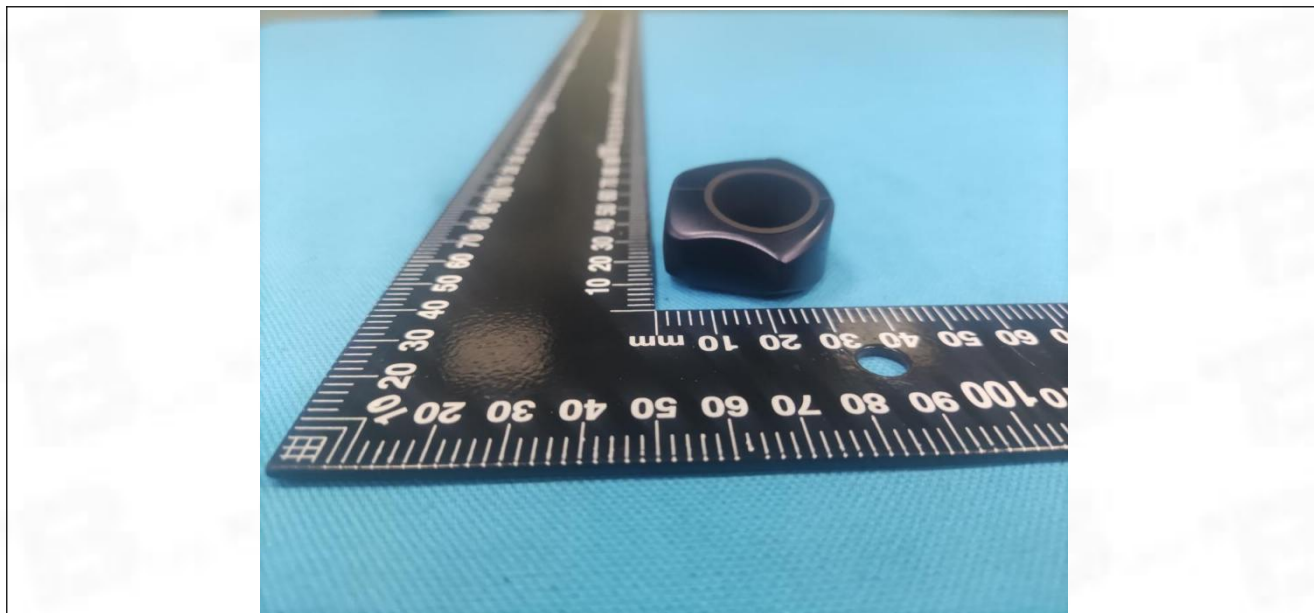
Radiated emissions (Above 1GHz)

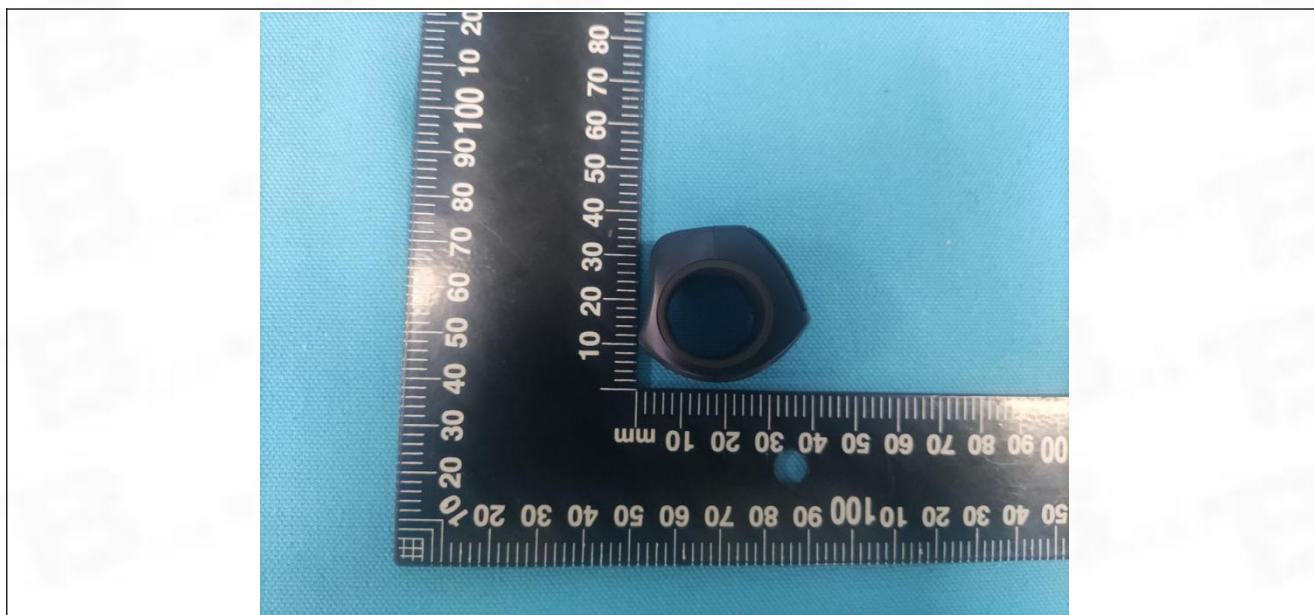
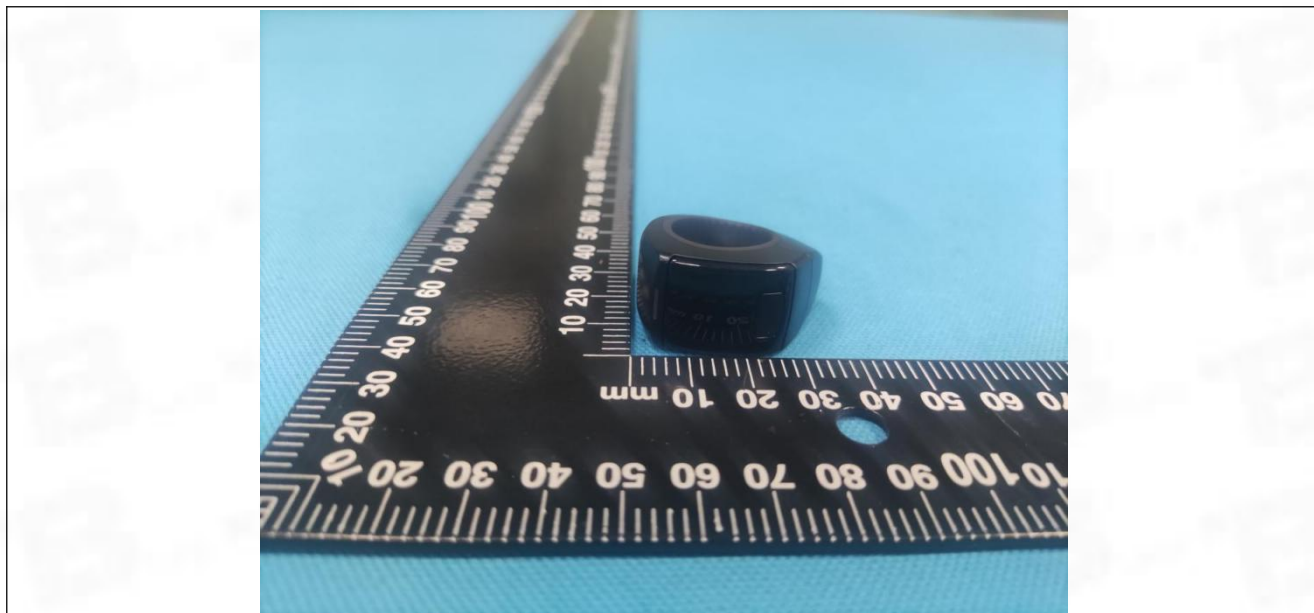


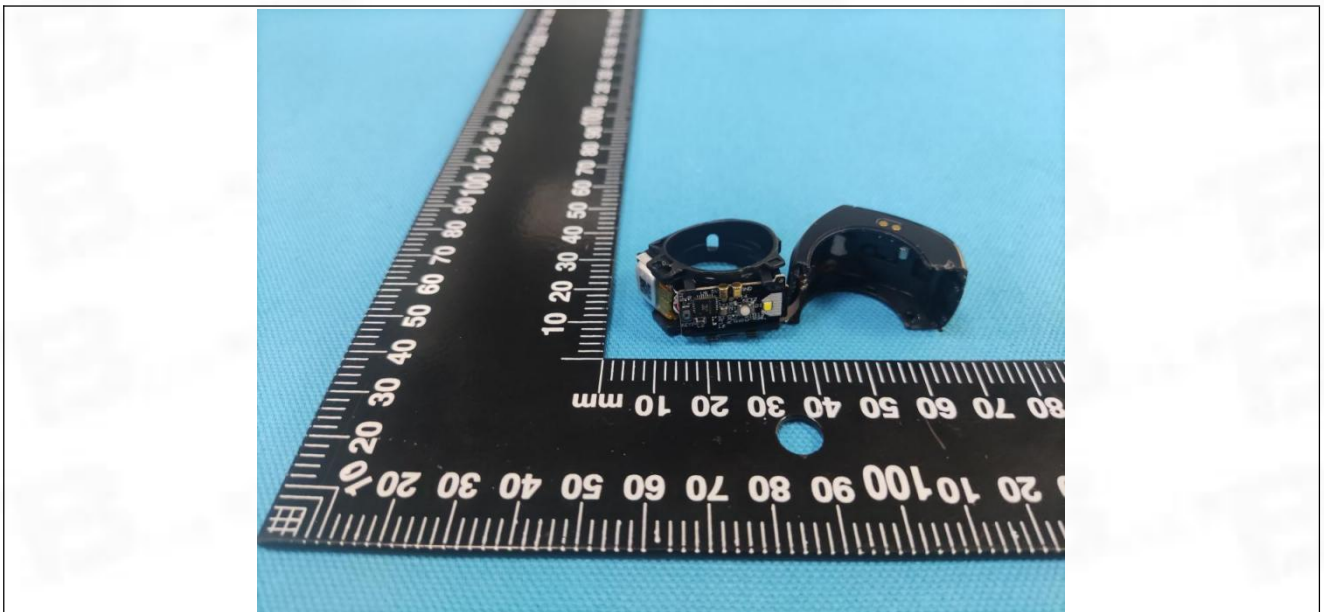
7 EUT Constructional Details (EUT Photos)

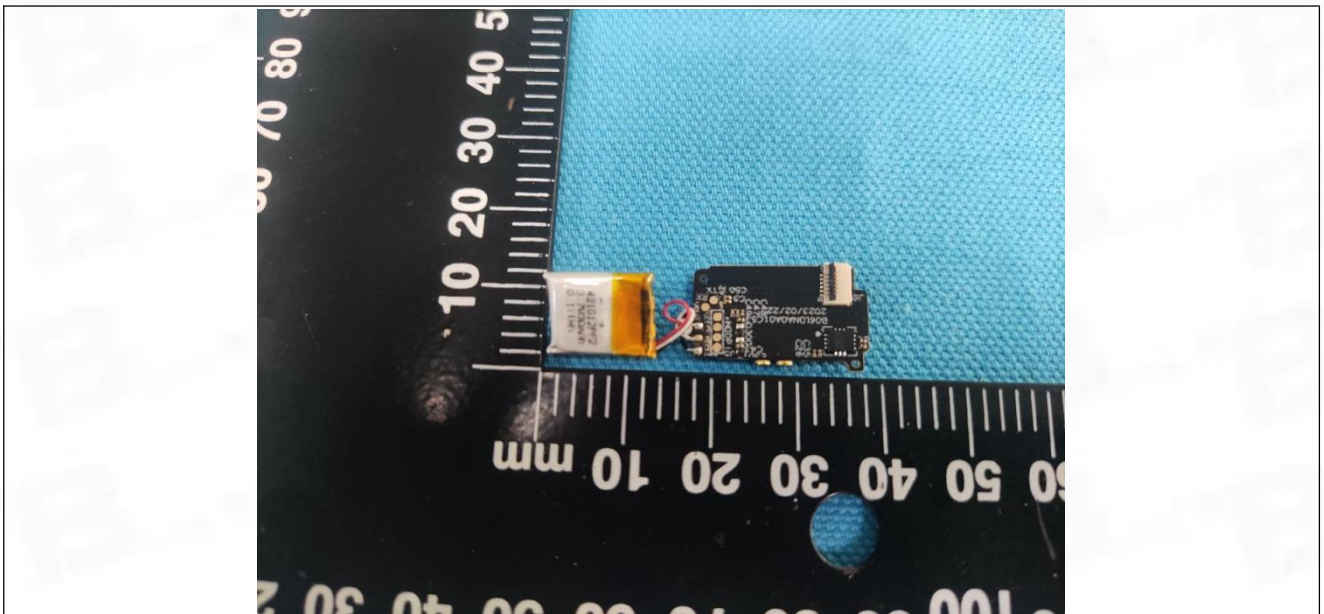
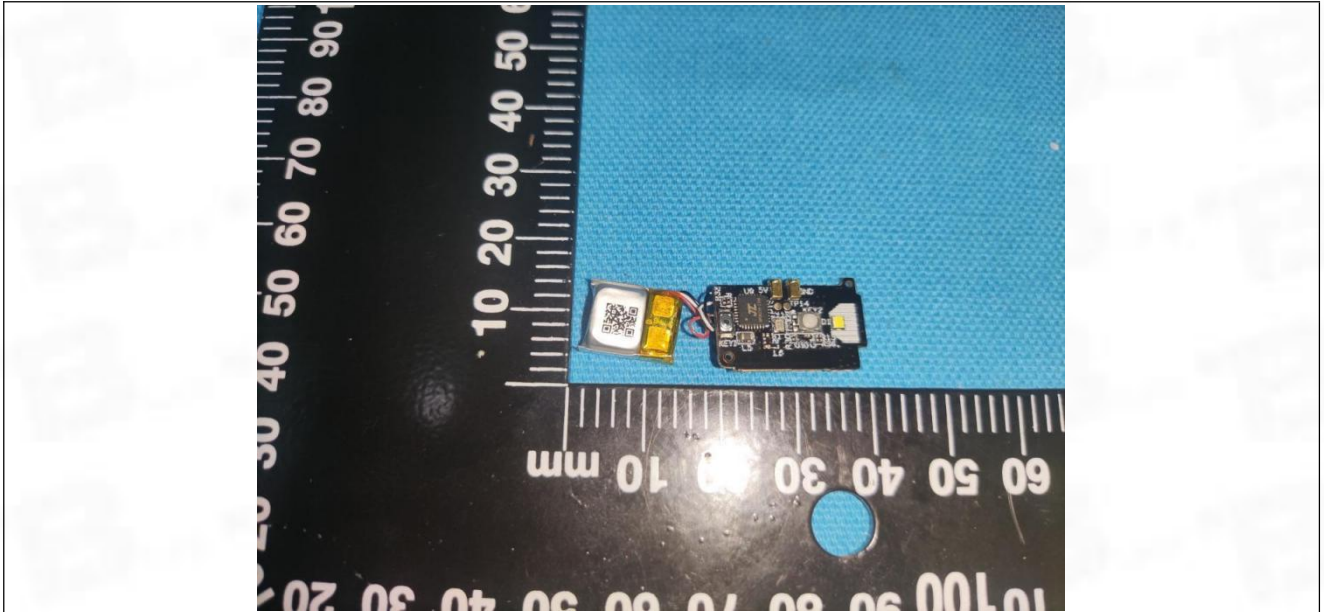
External

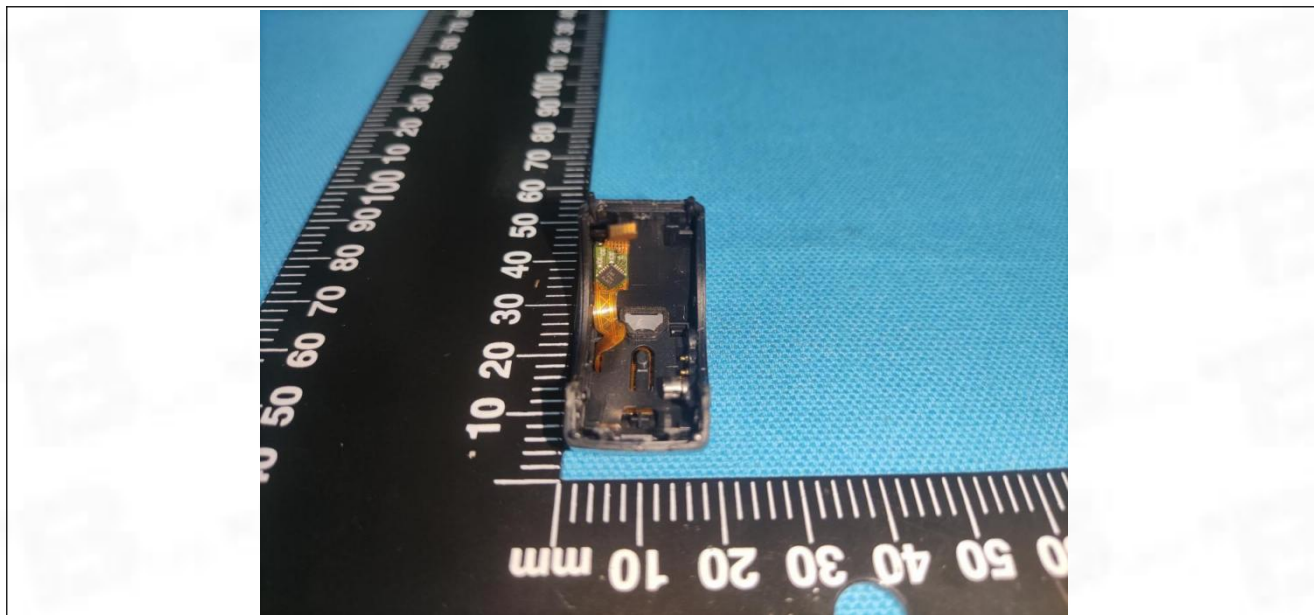














Test Report Number: BTF230718E00401



BTF Testing Lab (Shenzhen) Co., Ltd.

F101, 201 and 301, Building 1, Block 2, Tantou Industrial Park, Tantou Community, Songgang Street,
Bao'an District, Shenzhen, China

www.btf-lab.com

-- END OF REPORT --