

# ATTENTION

The following proofs are built in the new onn.™ branded packaging.

**\*\*\*NO GLOBAL OR MULTI-PAGE COMMENTS ARE PERMITTED\*\*\***

Please review and limit comments to only the following elements:

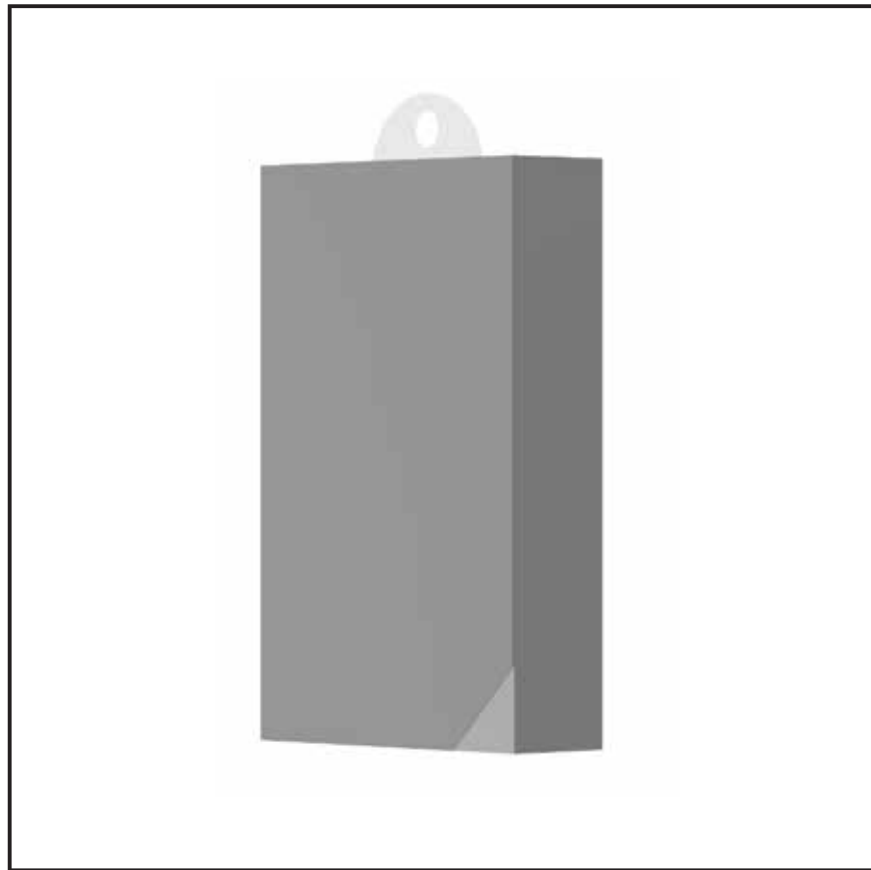
- UPC
- VSN
- Accuracy of features listed
- Accuracy of logos (Bluetooth, FCC, Intertek, H2R, Made in USA, Mfl etc.) shown
- The Specs- accuracy of performance specifications, technical details
- What's in the Box? Information (owner's manuals will NOT be listed)
- Disclaimers, Cautions and Warnings (including font size, verbiage and location)
- Trademark attribution statements

**Color, creative copy and design elements are established by Walmart branding and are not subject to supplier review.**

Thank you for your cooperation.

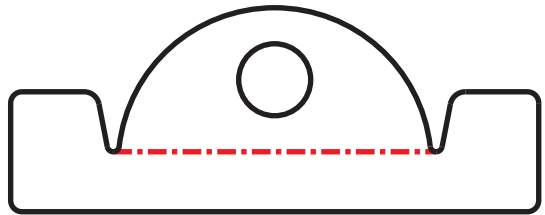
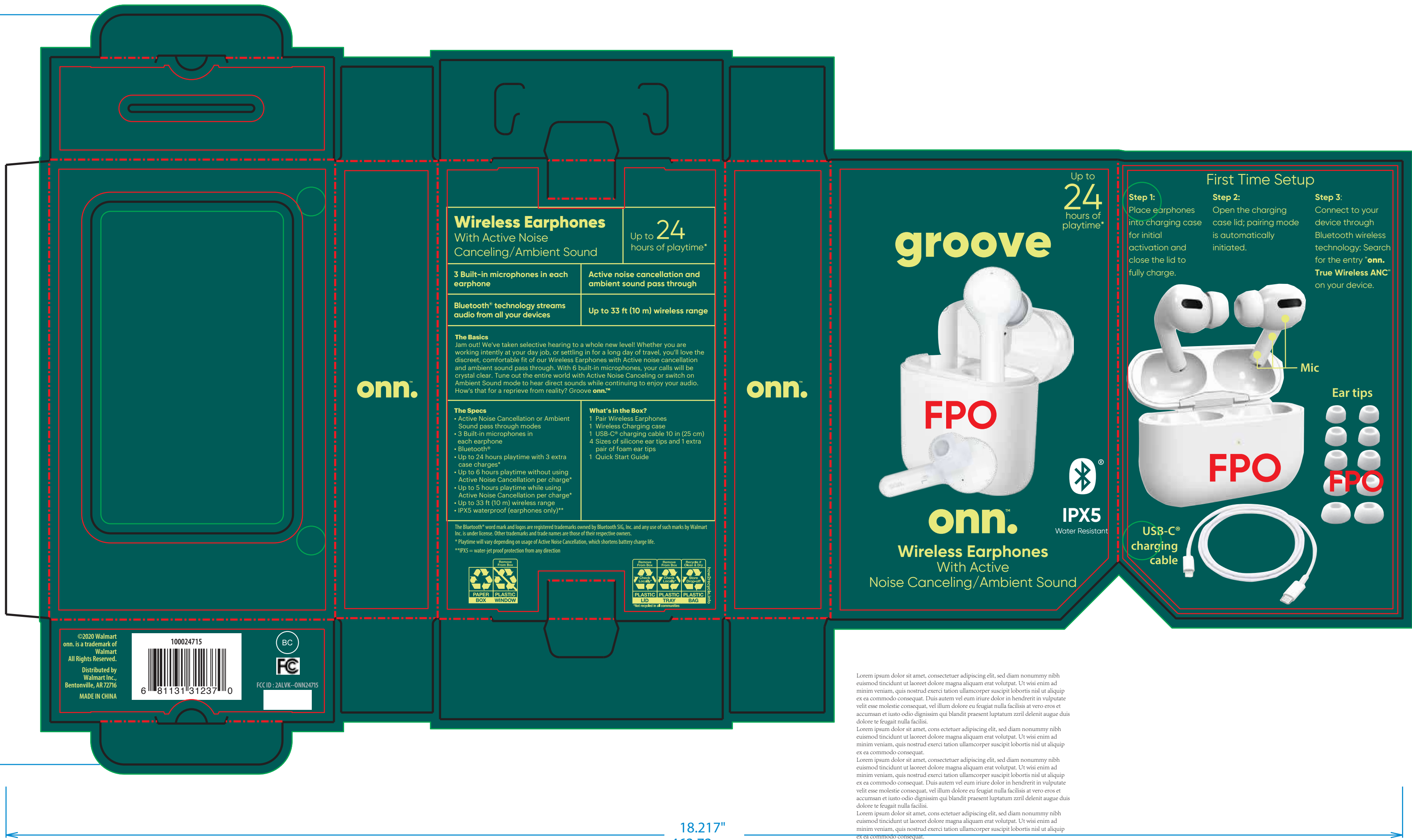


Cosonic  
100024715\_Tru Wireless Active Noise Cancelling Noodle\_P2  
OPT01  
10.13.2020




3.75"W x 6.75"H x 1.375"D





9.78"  
248.41mm




ATTENTION SUPPLIER:

The approval of this artwork for production also indicates that the final packaging dimensions have been approved by Walmart PD team member and UPC number is correct.

Specifications for Packaging Art Adaptation			Walmart  Private-Brand Packaging	
File name: 100024715_cosonic_tru wireless noise cancelling_P2				
Job #:	AR57569	Country of origin:	China	
Supplier:	Cosonic	Printer name:	r-pac	
Packaging type:	5th panel	Printer phone:	212-465-1818	
Package dimensions:	3.75" W x 6.75" H x 1.375" D	Printer email:	Tanya.Starace@r-pac.com	
Brand/PD:	onn.	Print material/stock:	TBD	
Department #/ Category:	D72	Translation resource:	Techlink	
Walmart VSN:	100024715	Additional notes:		
UPC:	681131312370			
IMPORTANT DATES				
Due to printer:	Pack-out:	Shipping:	In-store:	
TBD	TBD	TBD	TBD	
r-pac International, 132 West 36TH Street, New York, NY 10018, Tanya Starace, TEL: 212-465-1818		Walmart Tommy		
Additional comments: R-Pac to add bleeds as necessary.				
Walmart or approved Art Adaption Resources cannot distribute fonts to printers or suppliers. Fonts can be purchased at: myfonts.com				

Separations	
Process	
	
PMS colors	
chartreuse	
cobalt	
Total	6
Coating:	Spot UV Matt Varnish
 Note: this color represents decline and does not print	
Fonts:	
Gilroy black	
gilroy bold	
Gilroy Light	
Graphik regular	
Graphik bold	
myriad pro cond semibold	

File produced by:	
	
r-pac International Corporation	
Revision log	

- Cut line
- Fold line
- Copy safe area
- Outside bleed
- Glue area