

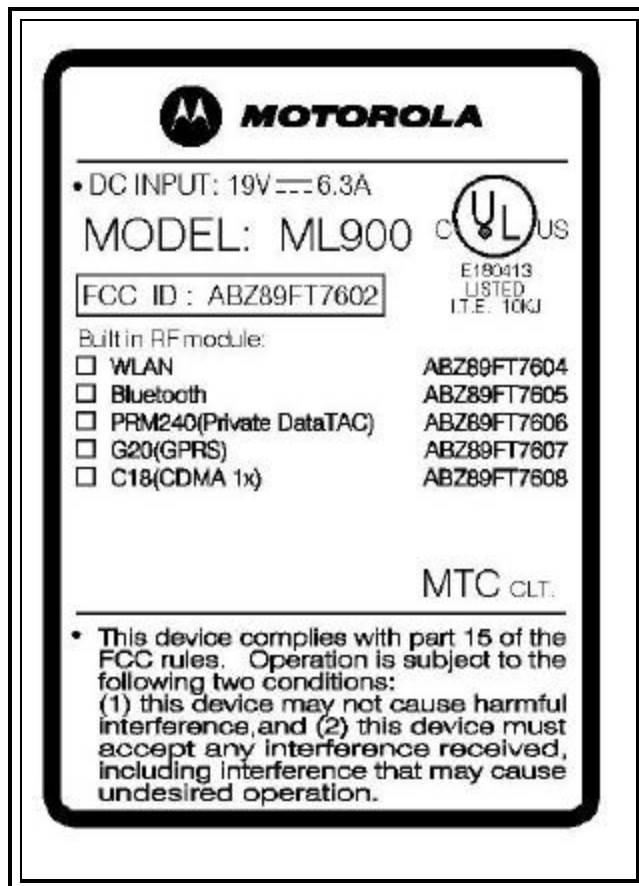
EXHIBIT B – Labeling Requirements

Sample Label & Location

New Labeling Requirements

Per 2.1074 & 15.19; Docket 95-19

The sample label shown below shall be permanently affixed at a conspicuous location on the device; instruction manual or pamphlet supplied to the user and be readily visible to the purchaser at the time of purchase. However, when the device is so small wherein placement of the label with specified statement is not practical, only the trade name, FCC ID, and the FCC logo must be displayed on the device per Section 15.19 (b)(2).

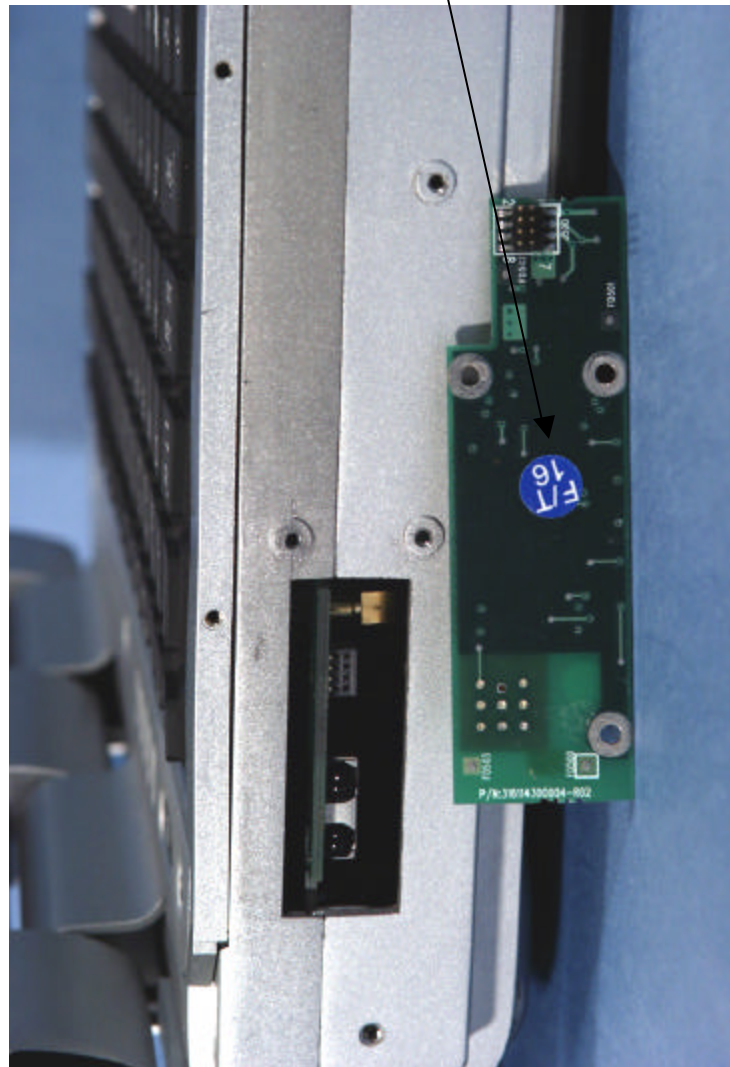


PCTEST LAB TEST REPORT 15.247	 FCC CERTIFICATION REPORT			Reviewed by: Quality Manager
Filename: 15.231217128.ABZ	Test Dates: Dec. 17, 2003	EUT Type: Bluetooth Module for Motorola ML900 series Notebook PC's	FCC ID: ABZ89FT7605	Page 19 of 27

EXHIBIT B – Labeling Requirements (Cont.)

Sample Label & Location

FCC ID LABEL



PCTEST LAB TEST REPORT 15.247	<div style="display: flex; align-items: center;"> FCC CERTIFICATION REPORT </div>		Reviewed by: Quality Manager
Filename: 15.231217128.ABZ	Test Dates: Dec. 17, 2003	EUT Type: Bluetooth Module for Motorola ML900 series Notebook PC's	FCC ID: ABZ89FT7605 Page 20 of 27