

**AP 200 S:  
PHOTOS OF INSTALLATION  
OF THE CIRCUIT BOARD  
WITHIN THE BATTERY PACK  
LAYER BY LAYER**

---

5<sup>th</sup> of September 2024

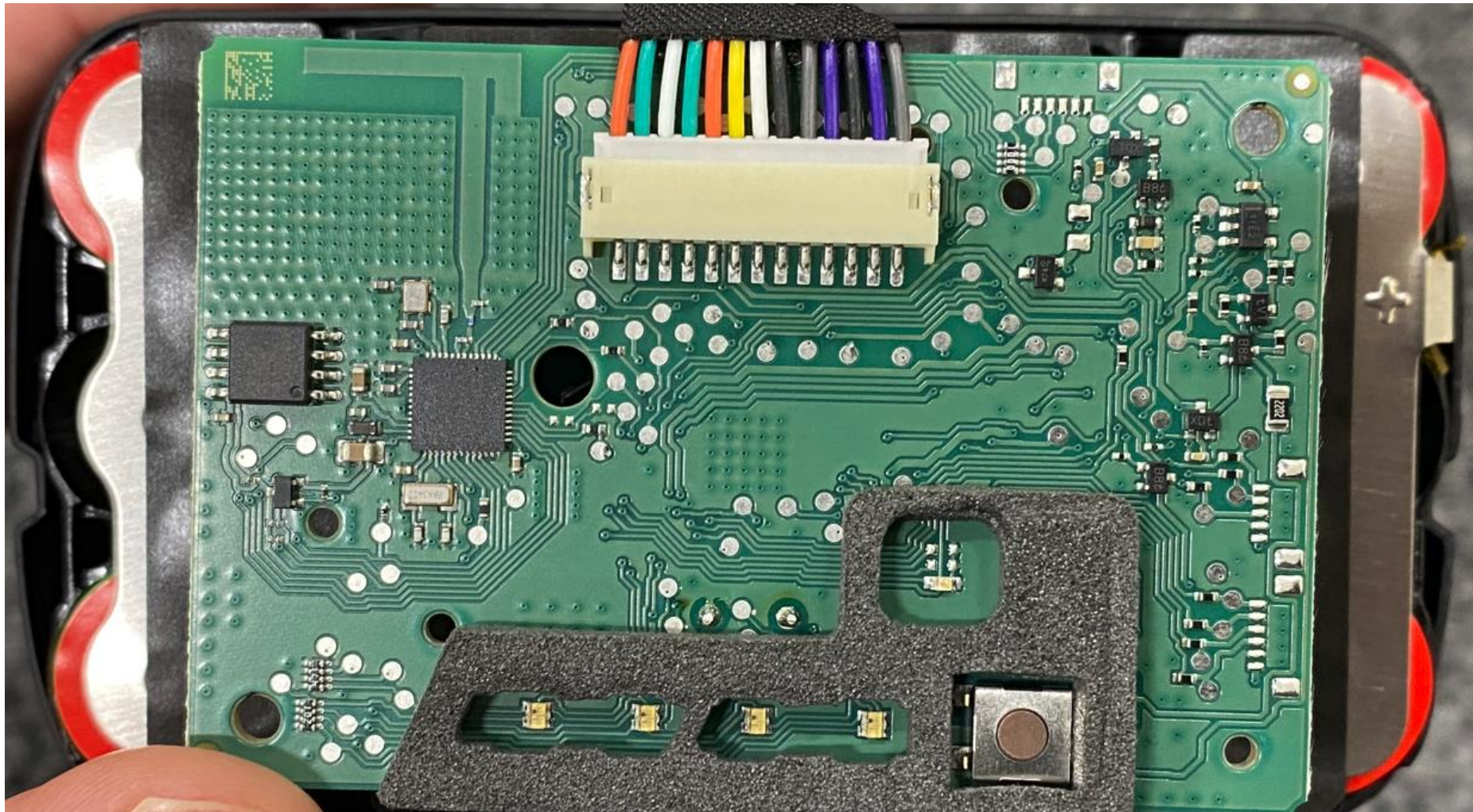
**Complete battery pack:**



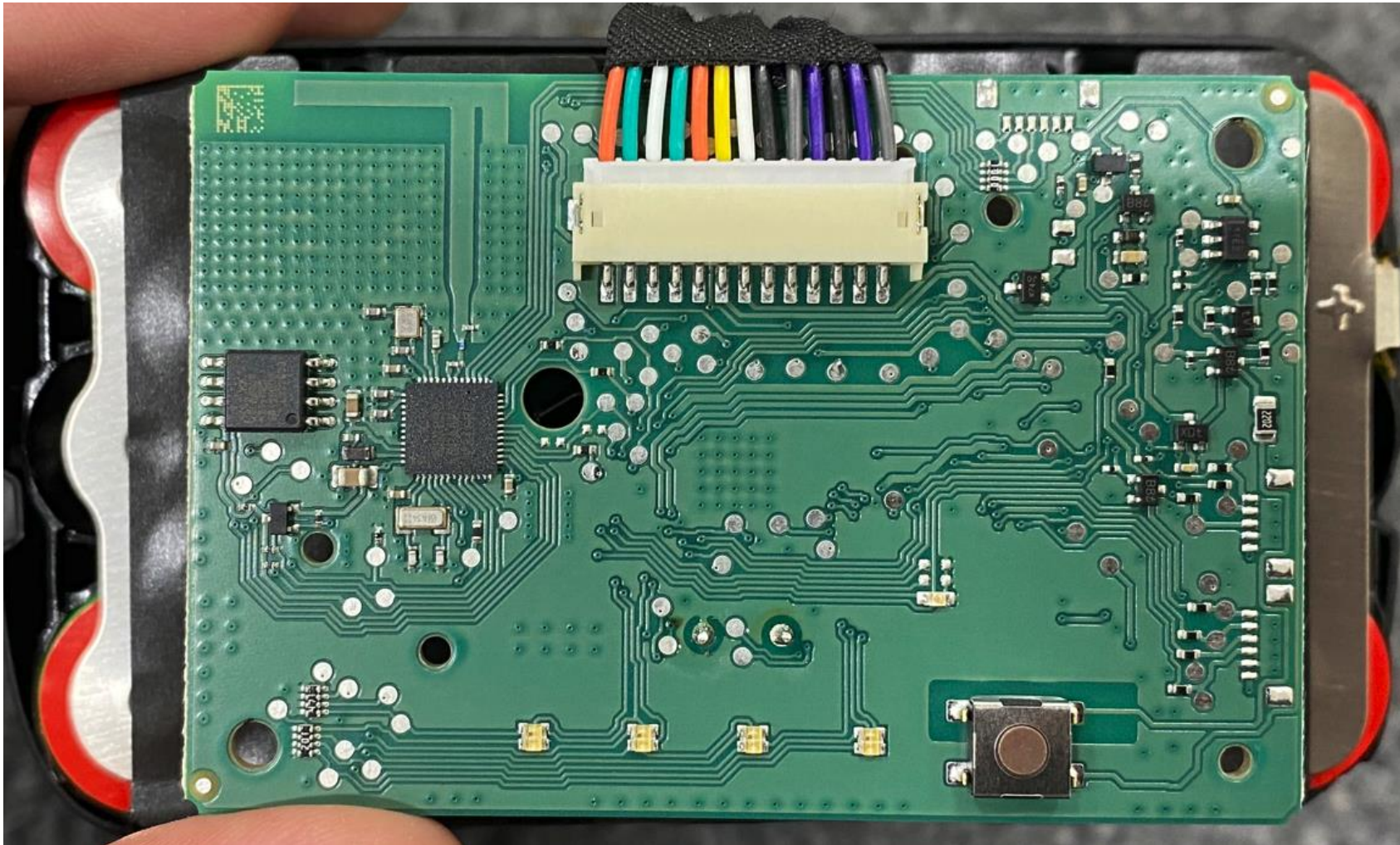
**Type foil removed:**



**Cover removed:**



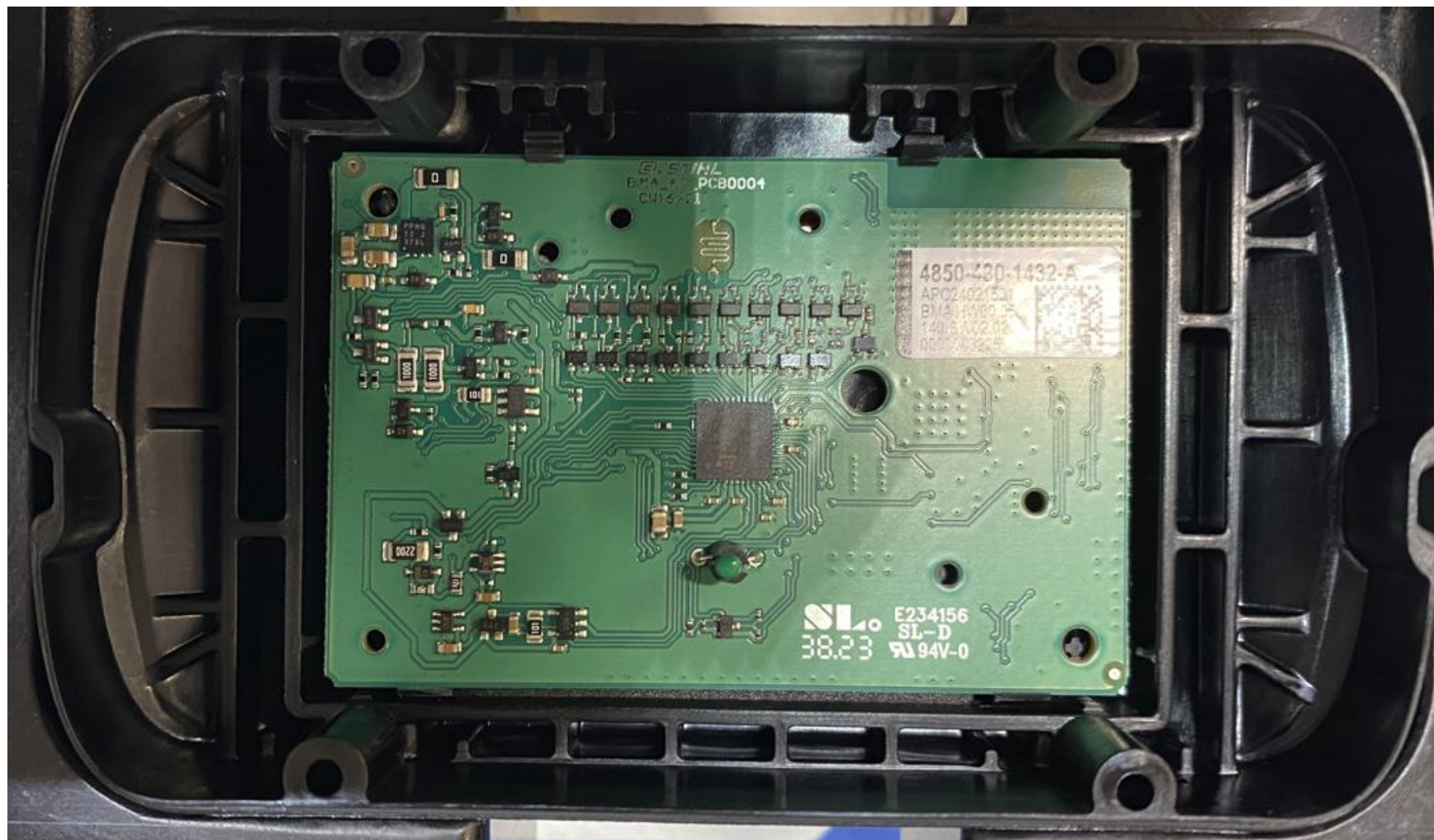
**Gasket removed:**



**Circuit board removed:**



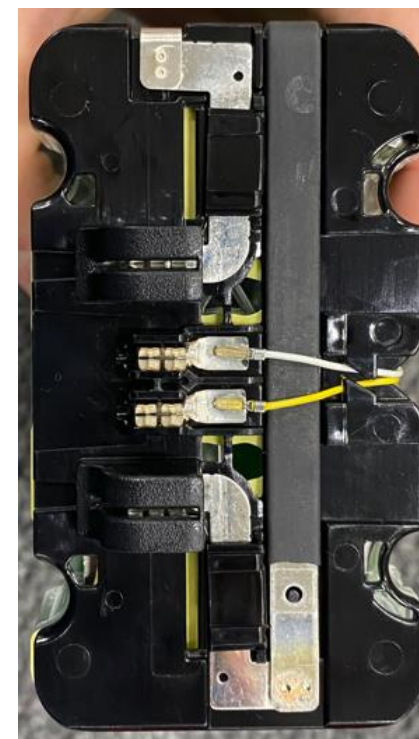
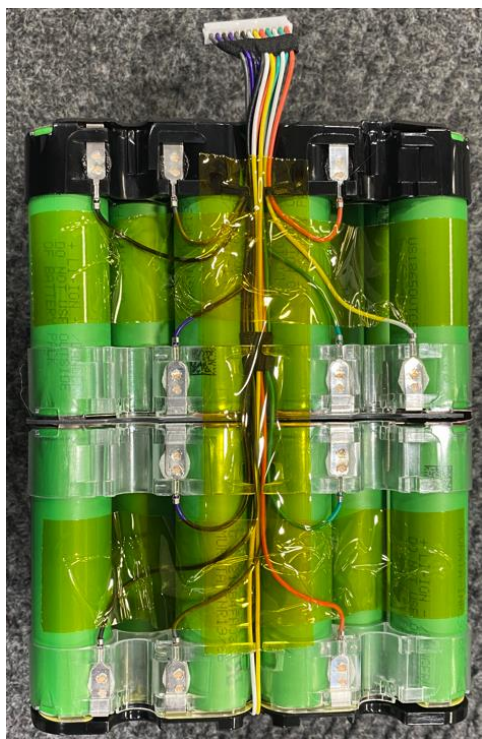
**Circuit board within the cover (opposite viewing direction as before):**



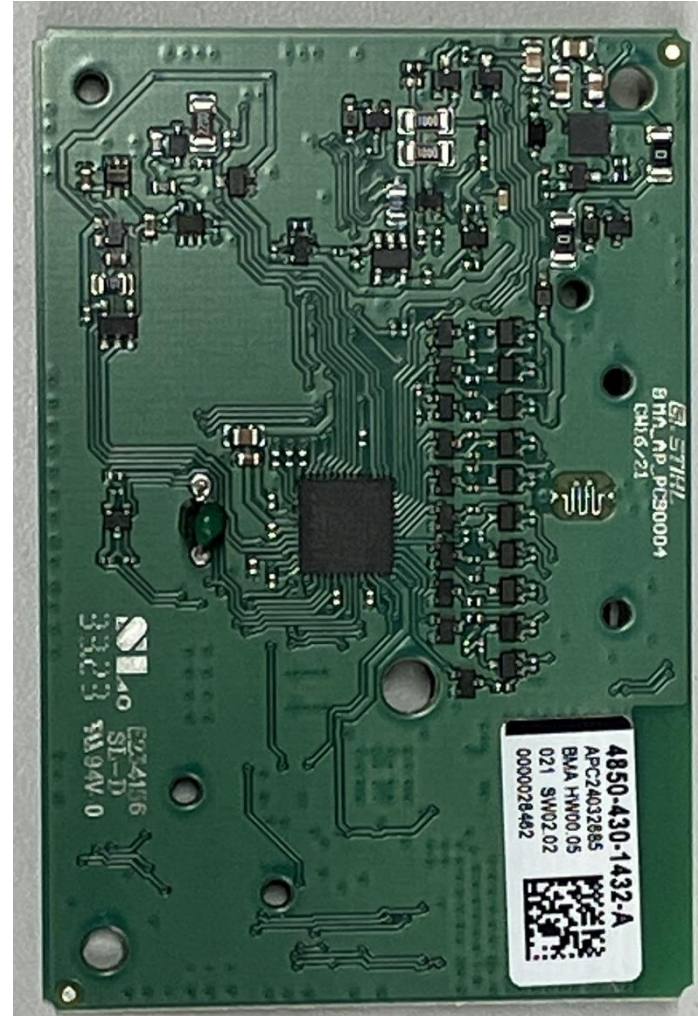
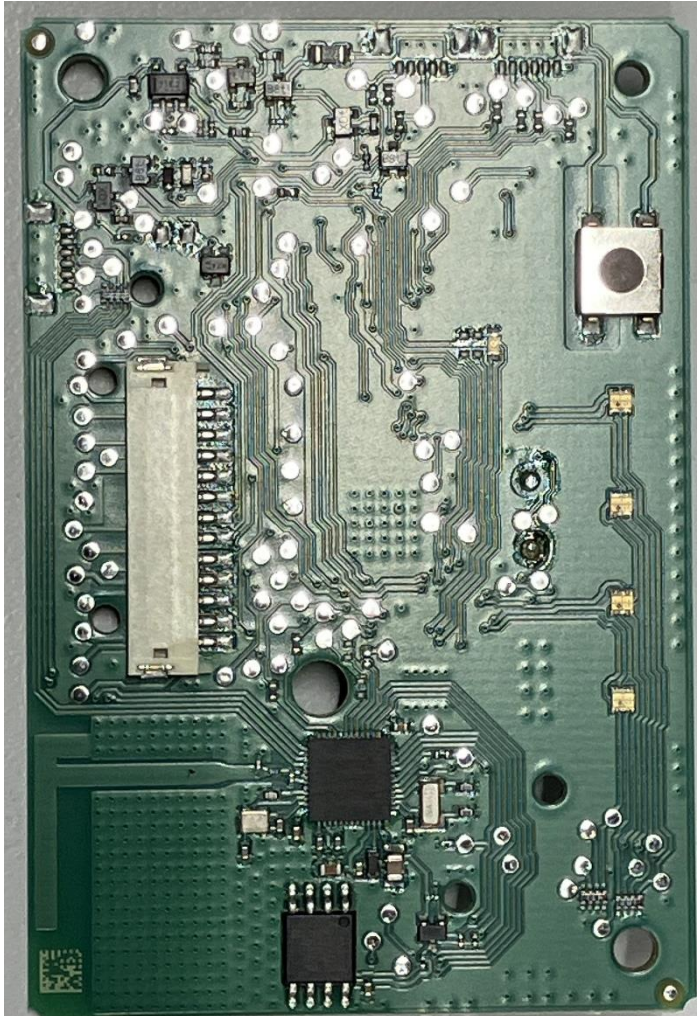
**Circuit board within the cover and enclosed in potting compound:**



## Corepack (assembled and connected cells) without housing:



## Detailed photos of the Circuit board:



No shield is being used.

All components are visible.

No components are covered by other components.