

Inner structure document: Model DWT-B03R



Fig1: Removed the antenna cover

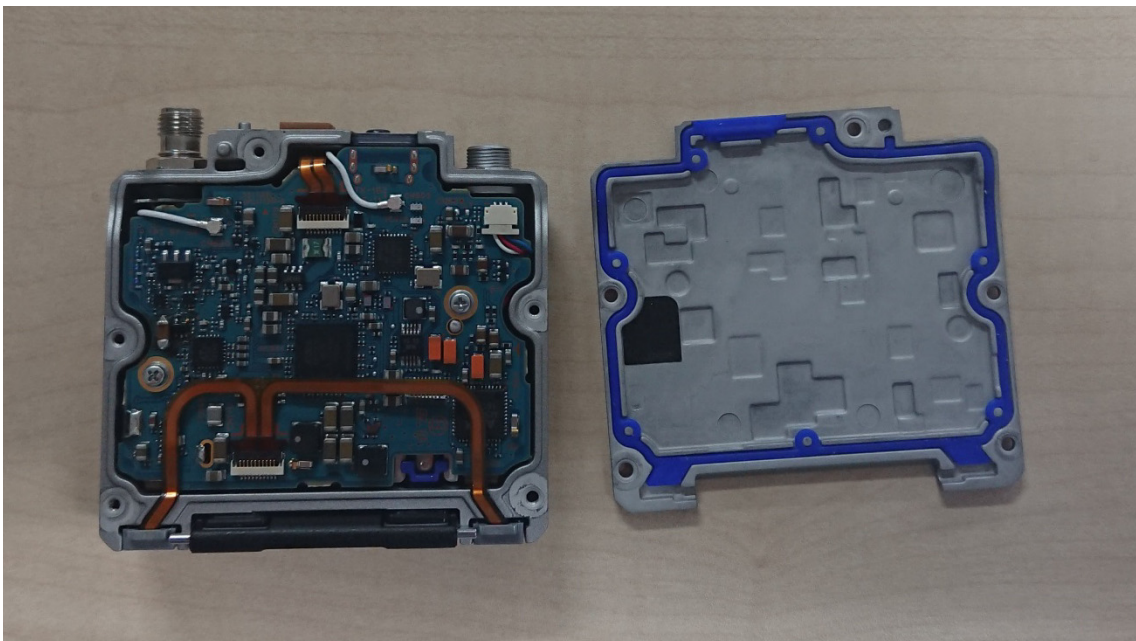


Fig2: Removed the rear panel

Inner structure document: Model DWT-B03R

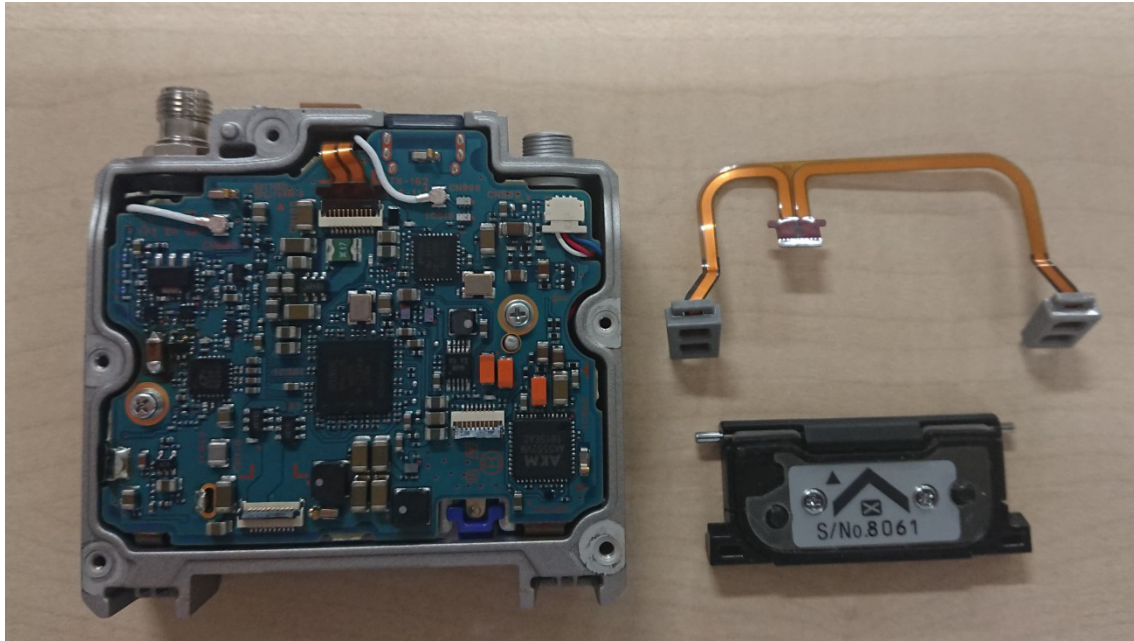


Fig3: Removed the battery cover and the flexible flat cable for charge



Fig4: Removed the board TX-162, main block

Inner structure document: Model DWT-B03R

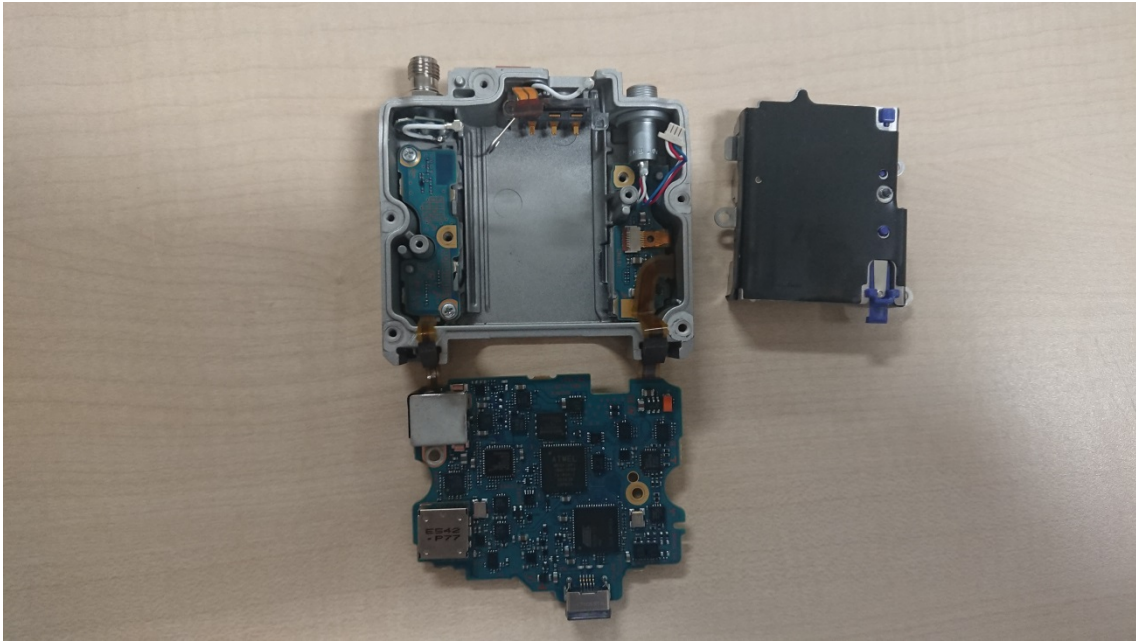


Fig5: Removed the battery case

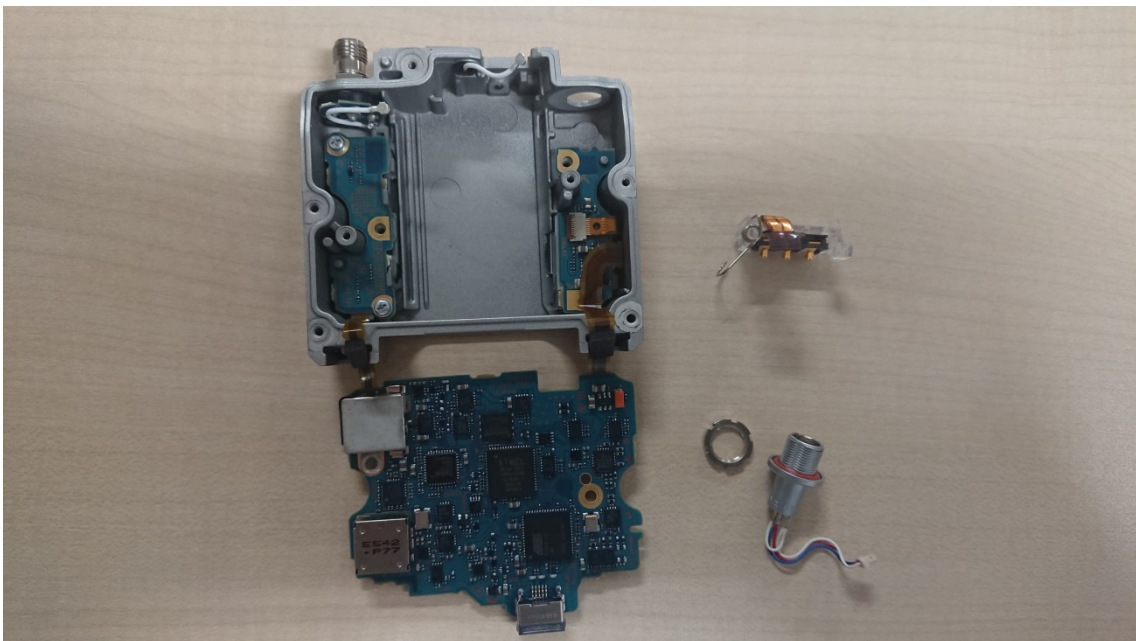


Fig6: Removed the MIC connector and the battery terminal



Fig7: MIC connector

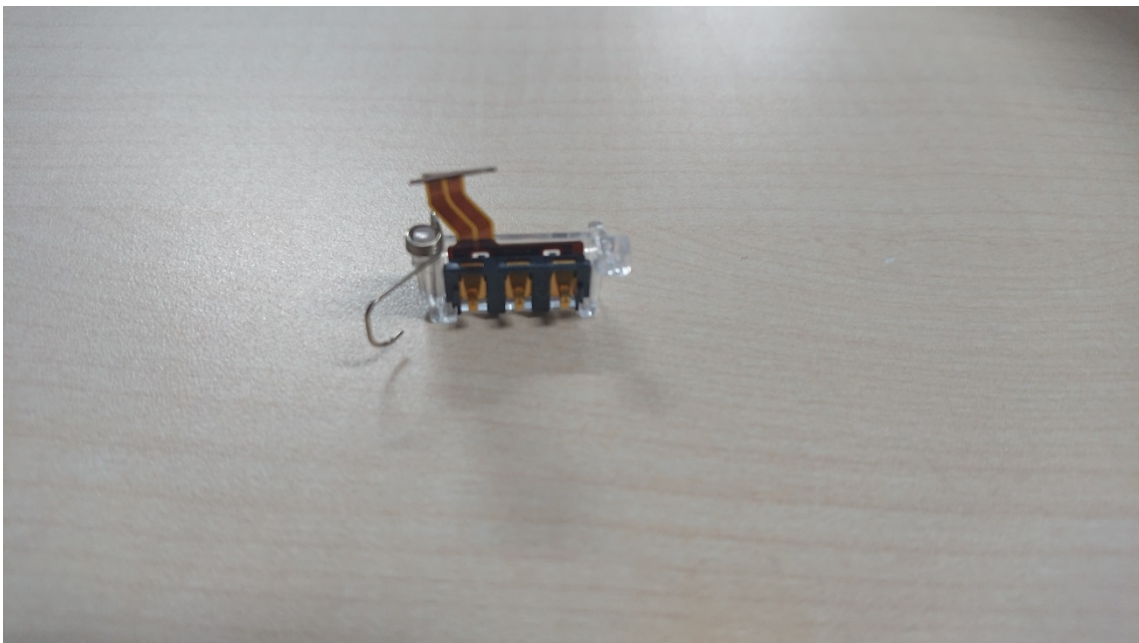


Fig8: Battery terminal

Inner structure document: Model DWT-B03R

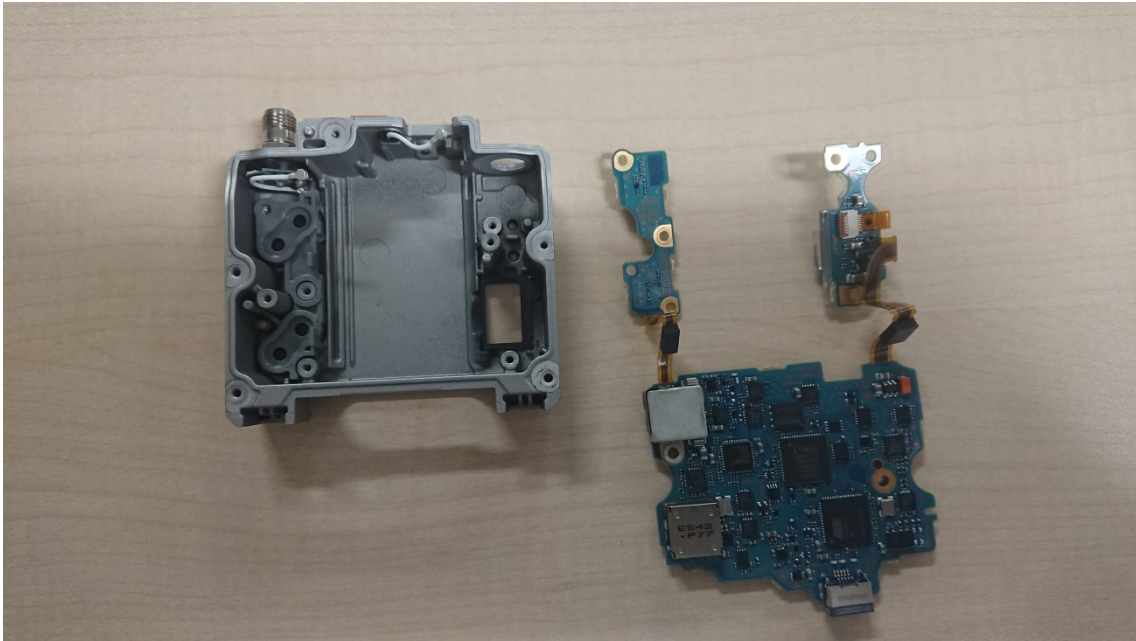


Fig9: Remove the board TX-162

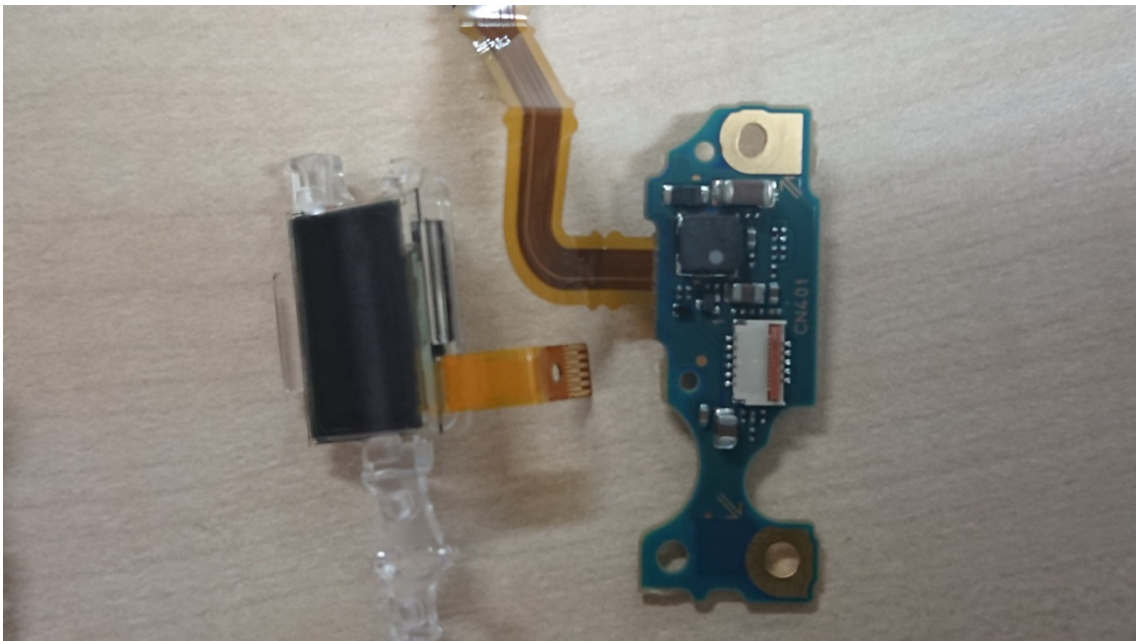


Fig10: Remove the OEL display

Inner structure document: Model DWT-B03R

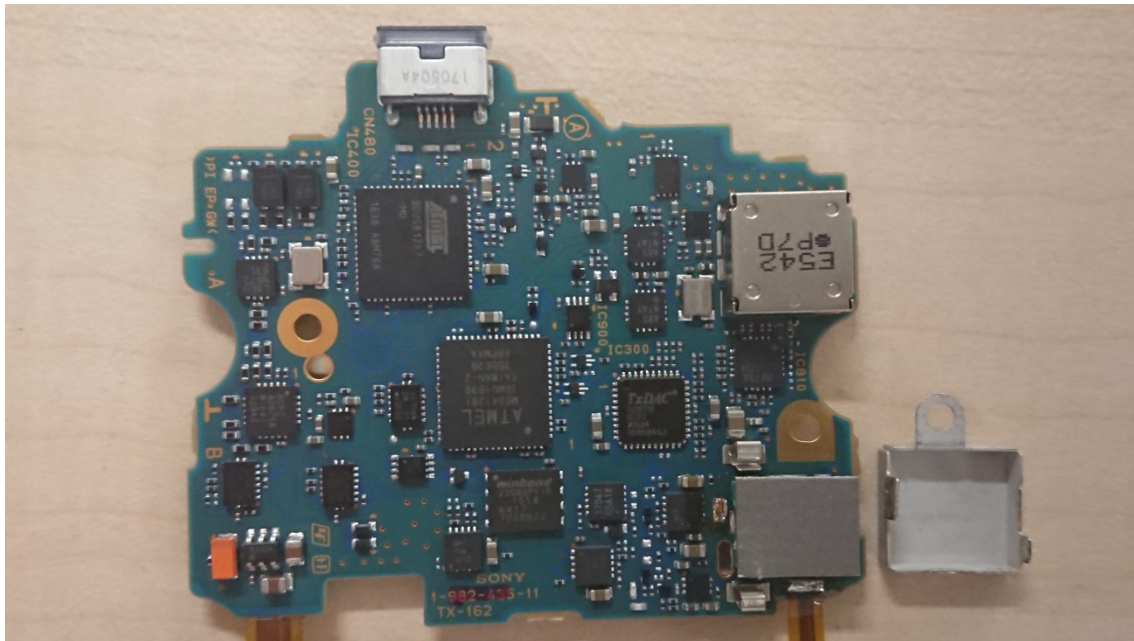


Fig11: Removed the shield case



Fig.12: Removed the electromagnetic absorber sheet

Inner structure document: Model DWT-B03R

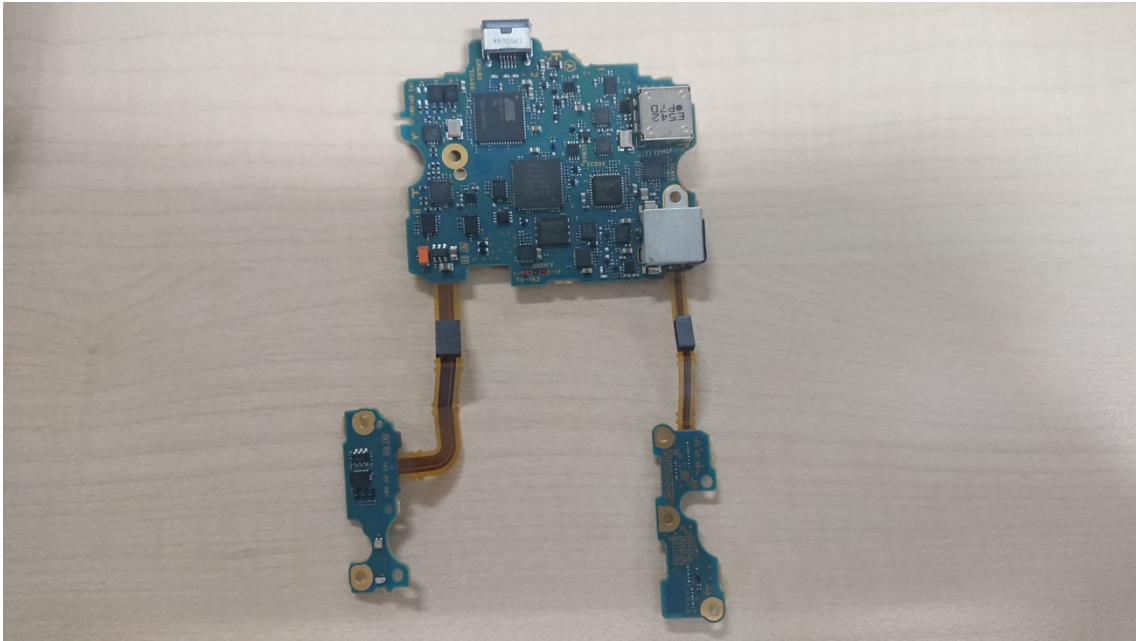
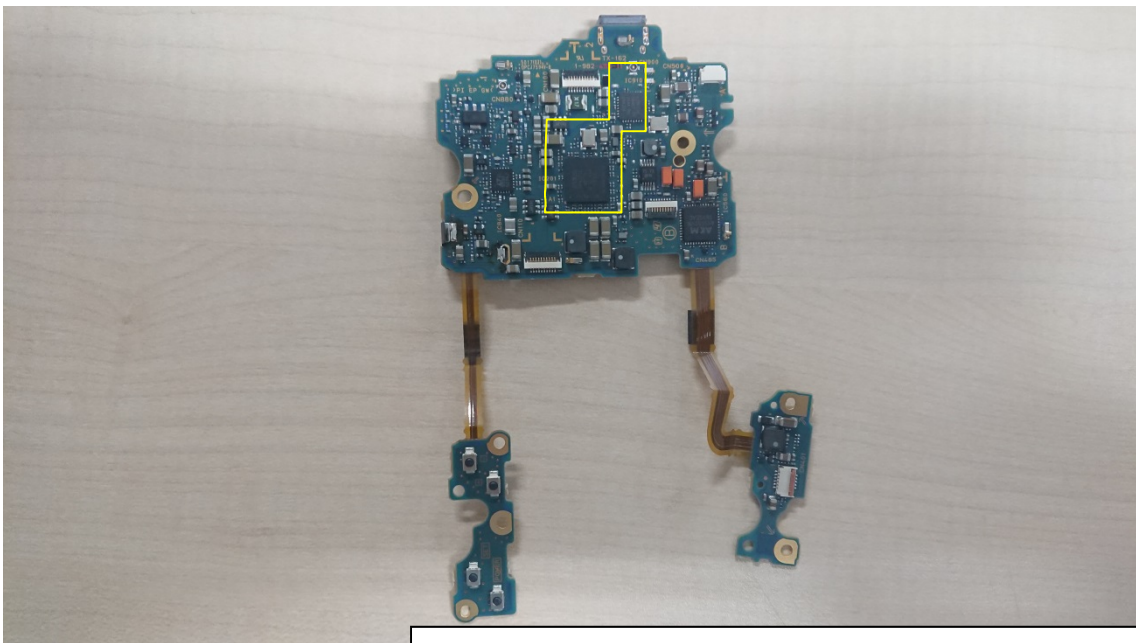


Fig13: Side A of board TX-162



The inside of the frame is the part of RF Remote.

Fig14: Side B of board TX-162

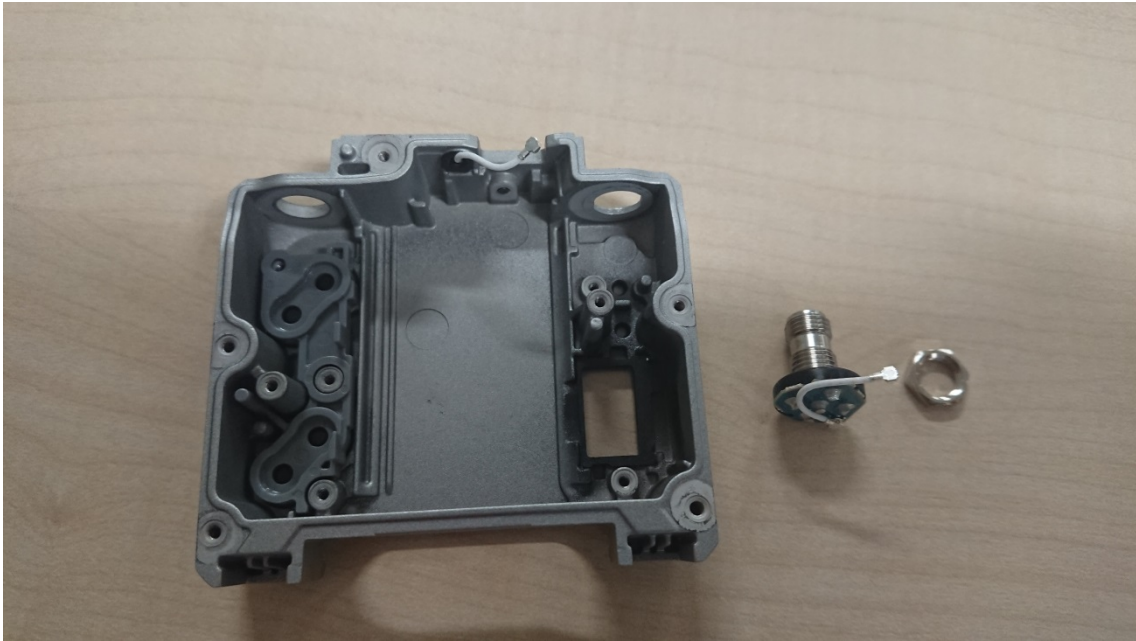


Fig15: Removed the antenna connector



Fig16: Removed the board RM-251

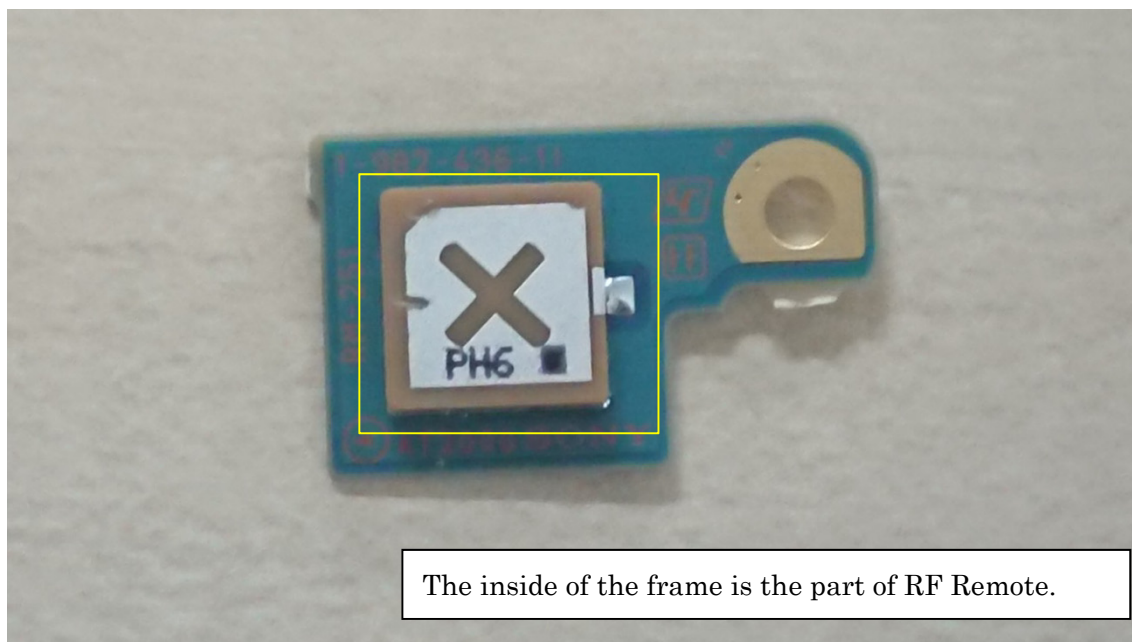


Fig17: Side A of RM-251

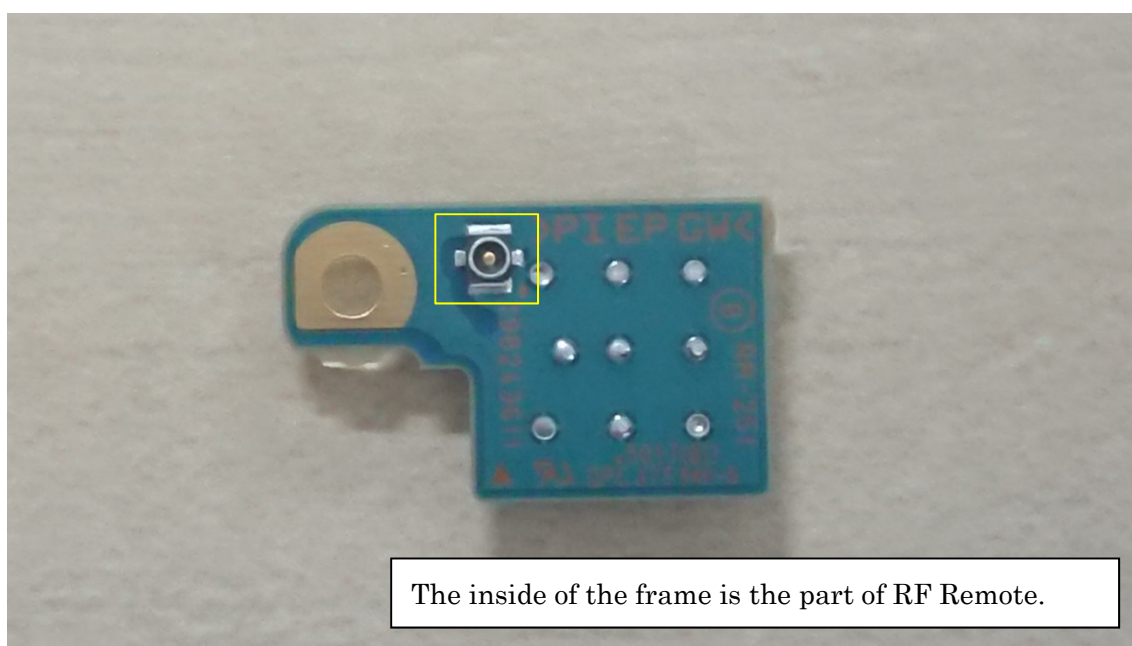


Fig18: Side B of board RM-251