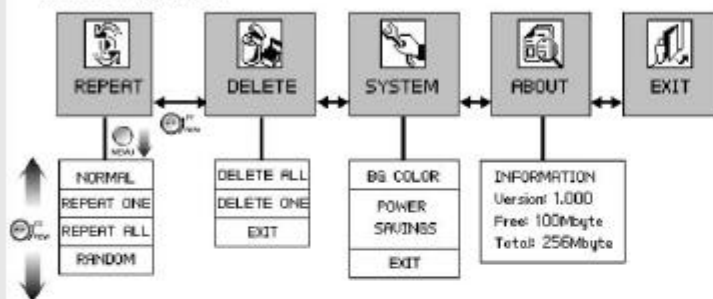


Voice Mode

Menu Configuration



REPEAT

Sets the voice file playback method in the voice mode.



NORMAL : Plays back every selected file once.
REPEAT ONE : Plays back the selected file repetitively.
REPEAT ALL : Plays back all selected files repetitively.
RANDOM : Plays back all selected files at random.

Voice Mode

DELETE

Deletes the saved voice file.



DELETE ALL: Deletes all saved voice files. Folders will remain even if files are removed.

Are you sure
you want to
delete all file?
Yes No Exit

DELETE ONE: Deletes the selected voice file only.

Are you sure you want
to delete the file
SONG_1.mp3
Yes No Exit

Note

► Only voice files are deleted in voice mode.

EXIT : Returns to the main menu.

Voice Mode

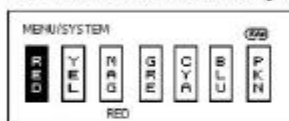
■ SYSTEM

Deletes the saved voice file.



BG COLOR POWER SAVINGS EXIT

BG COLOR: Selects a LCD backlight color



POWER SAVINGS: Sets the time duration when the player is automatically turned off if you don't press any button in stop mode. If you set to DISABLE, the automatic shutdown function will not be activated.



DISABLE 30 Sec 1 Min 3 Min 5 Min

■ ABOUT

Displays the firmware version and the memory capacity.

INFORMATION	
Version: 1.000	Current firmware version
Free: 100Mbyte	Available memory capacity
Total: 256Mbyte	Total memory capacity

■ EXIT

Saves all settings and returns to the voice mode.

MP3
PLAYER

FM Mode

Basic Functions

■ Scanning FM Frequency

Scans the frequency of the broadcasting to listen.

■ Automatic frequency scanning

Turn the FF/REW [FF/REW] dial and hold it to scan the frequency automatically while you're listening to the radio.

■ Manual frequency scanning

Turn the FF/REW [FF/REW] dial once shortly while listening to the radio.

■ Volume Control

Press the [VOL-], [VOL+] button shortly to increase the volume by 1 step, or hold the button to increase the volume continuously.



Warning

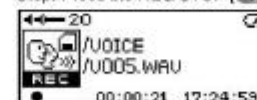
- Do not increase the volume too high during playback using an earphone. Your hearing ability can be impaired.
- Turn the volume down first and increase to the one you want.

■ FM Recording

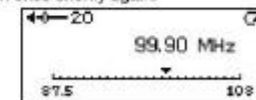
Records the radio channel that you're currently listening to.

Record: Press the REC/STOP [REC/STOP] button once shortly.

Stop: Press the REC/STOP [REC/STOP] button once shortly again.



Recording



Stop Recording

Note

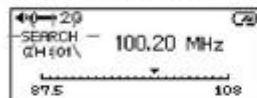
- FM recording files will be saved and identified by the letter "V" ahead of three digit numbers.
- You can play back the saved channel in a voice mode.

FM Mode

Automatic Preset Saving (AUTO SCAN)

Scans the FM broadcasting service automatically and saves it in a channel number 1 to 20.

1. Press the MENU [] button shortly while you're listening to the radio to enter into the menu mode. Select the AUTO SCAN, then the AUTO SCAN starts.
2. After completing the AUTO SCAN, it switches to the preset reception mode.



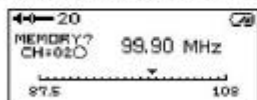
Note

- ▶ If you select the Preset Auto Save mode, all the saved station will be cleared.
- ▶ All the available channels may not be detected in the weak FM reception area.

Manual Preset Saving

Scans the FM broadcasting service manually and saves it in a channel number 1 to 20.

1. Find the frequency of the radio station to save and press the REC/STOP [] button once for a long time.
2. The MEMORY? and the channel number are displayed at the left upper side of the LCD.
3. Select the channel number to save using the FF/REW [] dial and press the REC/STOP [] button once for a long time to save the station in the selected channel.



Note

- ▶ If no channel has been saved, the EMPTY will be displayed.
- ▶ "●" will be marked for the channel saved number, whereas "○" will be marked for the available channel.

MP3
PLAYER

FM Mode

Tuning to the Saved Channel

Listens to the broadcasting by the channel saved in the Preset mode (Automatic/Manual).

1. Switch to the Preset mode by pressing the PLAY/STOP [] button longer once.
2. Turn the FF/REW [] dial once shortly in the Preset mode to move forward/backward in the channels.
3. The EMPTY will be displayed if no channel has been saved.

Deleting the Saved Channel (Deleting Preset)

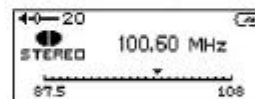
Deletes the broadcasting channel saved by AUTO SCAN or manually.

1. Select a channel to delete using the FF/REW [] dial in the Preset mode.
2. Press the REC/STOP [] button once for a long time.
3. The selected channel will be deleted and it will remain as an empty channel.

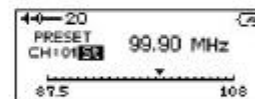
Reception Mode Switching

You can switch between the Preset reception mode and the FM reception mode.

Press the PLAY/STOP [] button once for a long time.



General FM reception mode



Preset reception mode

Switching Mono and STEREO Mode

Press the PLAY/STOP [] button once shortly in the Preset reception mode to switch the Mono and Stereo.

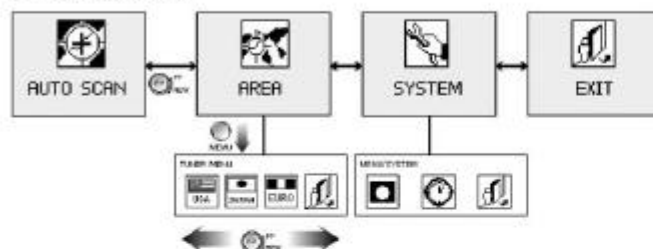
Note

- ▶ The reception mode will be converted with MONO if you turn the power off.

MP3
PLAYER

FM Mode

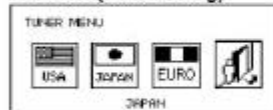
Menu Configuration



■ AUTO SCAN (Automatic Preset Saving)

Scans the available broadcasting station and saves the found channel in the channel number 1 to 20.

■ AREA (Area Setting)



- USA: North America, Korea
- JAPAN
- EURO: Europe, Asia

Note

► Available frequency band according to area

Area	Frequency Band	Mobile Frequency Unit
N.America/Korea	88 MHz ~ 108 MHz	100 KHz
Europe/Asia	88 MHz ~ 108 MHz	50 KHz
Japan	76 MHz ~ 108 MHz	76.0 MHz ~ 90.0 MHz : 100 KHz 90.0 MHz ~ 108.1 MHz : 50 KHz

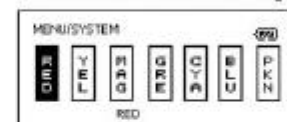
MP3
PLAYER

FM Mode

■ SYSTEM



B.G. COLOR: Selects a LCD backlight color.



- POWER SAVINGS: Sets the time duration when the player is automatically turned off if you don't press any button in stop mode. If you set to DISABLE, the automatic shutdown function will not be activated.



■ EXIT

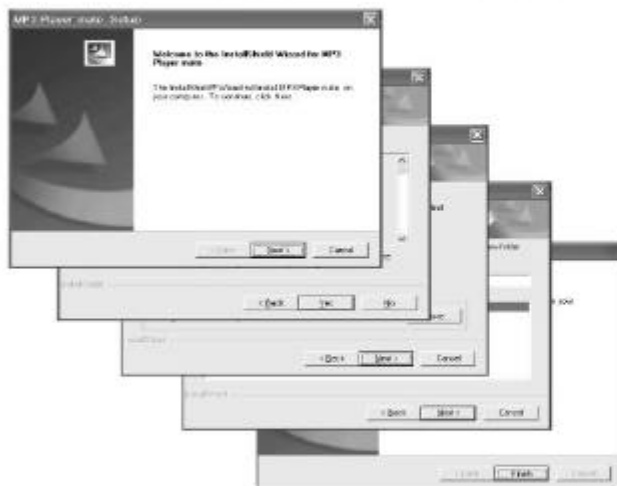
Saves all settings and returns to the FM mode.

MP3
PLAYER

Installing Program

Take the following steps to install the program used for player memory formatting and firmware upgrade.

1. When you insert an installation CD included in the product package into the CD ROM driver, the InstallShield Wizard will start automatically. Press the [Next] button according to the message displayed on the window to complete program installation.



Installing Program

2. The firmware download and MSCN formatting program will be listed in Start => Programs => MP3 Player mate program group.



Caution

Do not connect the player to the PC before installing the program in Windows 98/SE. The program may not work properly.

Uninstalling Program

You can uninstall the programs used for formatting and firmware upgrade.

1. Select Start → Programs → MP3 Player mate → Uninstall menu.



2. Click the [OK] button when the "Confirm Uninstall" dialog box appears.



Uninstalling Program

3. Lastly, click the [Finish] button to remove the program.



Downloading Files

- Click with the right mouse button and select the [Copy] pop up menu to download the selected files to the player.



- Select the [Removable Disk] in the Explorer folder and select the [Paste]. Then, file uploading will be completed.

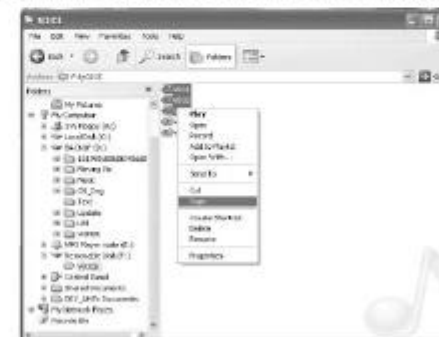


Uploading Files

- Select the uploading files from the right side window of the Windows Explorer.

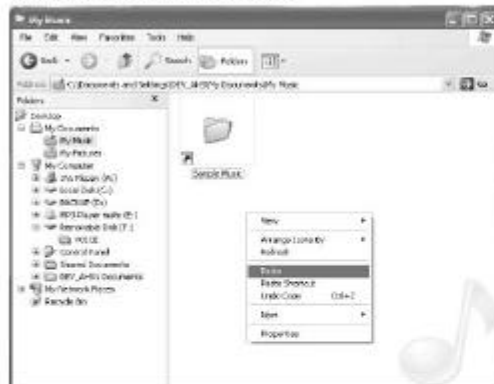


- Click with the right mouse button and select the [Copy] popup menu.



Uploading Files

3. Select the target folder in your PC and select the [Paste] popup menu. Then, file uploading will be completed.

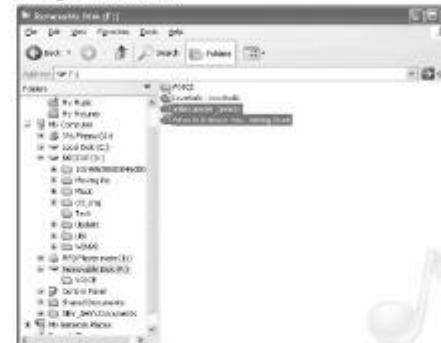


Note

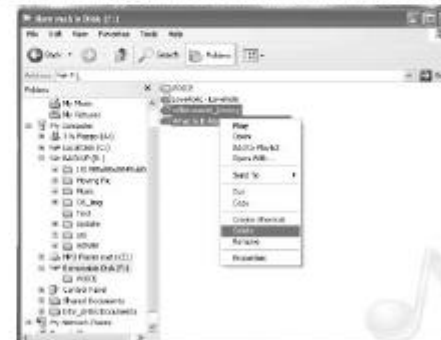
- ▶ You cannot play back other Wave files having a different file name format other than "V000.wav". The file name should start with "V" and three digit numbers should follow.
- ▶ You may select the file(s) and drag and drop it on the target location to upload or download it.
- ▶ You can create folders in your PC and save them in the player.

Removing Files

1. Click the [Removable Disk] folder item and then, select the file(s) to delete from the right side window.

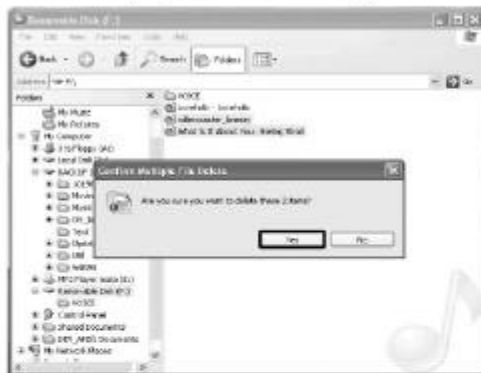


2. Click with the right mouse button and select the [Delete] popup menu.



Removing Files

3. Click the [Yes] button to remove the file(s).



Note
► You can also delete file(s) by selecting it and press the [Delete] button.

Formatting a Memory

1. Connect the player to your PC using an USB cable.
2. Select Start ► Programs ► MP3 Player mate ► Format menu.



3. When the "Format" window appears, press the [Start] button to start memory formatting.



Formatting a Memory

4. Press the [Close] button when memory formatting is completed.



Note

- ▶ When the player is not working normally (button is disable), format the memory as described above. Then, the player will work normally but all saved files will be removed.



Warning

- ▶ Make sure to use the Formatting program.
- ▶ Do not remove the USB cable while formatting the memory.

MP3
PLAYER

43

Troubleshooting

Please check the following points if the player fails to run properly.

Symptom	Reasons	Corrective Actions
Nothing appears on the LCD	Is the battery exhausted?	Replace with new one.
	Is the battery polarity is correct?	Check the polarity. (+/-)
Unable to record.	Is the HOLD button on?	Release the hold mode.
	Is the memory is enough?	Remove the unnecessary files.
	Is a battery exhausted?	Replace with new one.
Unable to play back	Is the HOLD button on?	Release the hold mode.
	Is there anything saved in the player?	Check the file number.
	Is a battery exhauste?	Replace with new one.
No sound heard from the earphone	Is the volume set to 0?	Set the volume.
	Is an earphone plugged properly?	Plug in the earphone completely.
Unable to upload/download a file	Is the driver installed property?	Install the driver.
	Is the USB cable plugged properly?	Plug in the USB cable completely.

MP3
PLAYER

44

Product Specifications

Item		Specification		
Model Name		MP-400D	MP-400E	MP-400F
Memory Capacity		128 MB	256 MB	512 MB
Max. Recording Time		524 Min	1067 Min	2134 Min
Battery Lifetime		MP3 Playback: 11.5 hours, Voice Recording: 14 hours, FM Reception: 15 hours		
Frequency Range		500 Hz ~ 3500 Hz		
Data Rate		8 Kbps ~ 320 Kbps, VBR		
Supported	MP3	MPEG 1, 2, 2.5, WMA		
File Format	Voice	ADPCM (IMA)		
Earphone		16 Ohm		
USB Cable		PC Interface USB 1.1		
LCD		Graphic (128~48) 4 Line LCD		
Supported Language		24 languages including Korean, English, Japanese and Chinese		
Practical Max. Output		8 mW		
FM Frequency Range		76.5 Mhz~108 Mhz		
Dimensions		34X82.5X14.85 mm (WXHxD)		
Weight		30g (excluding battery)		
Storage Media		Imbedded Flash Memory		
Power Supply		1.5V AAA Alkaline 1 EA		
Operational Temperature		0 ℃ ~ 40 ℃		
Accessories		User's Manual, Earphone, AAA Alkaline Battery 1EA, USB Cable, Installation CD, Necklace String		

*Product specifications and appearance are subject to change for product improvement without a prior notice.

MP3
PLAYER

45

Note

This device complies with Part 15 of the FCC Rules. Operation is subject to the following two conditions: (1) this device may not cause harmful interference, and (2) this device must accept any interference received, including interference that may cause undesired operation.

Note : This equipment has been tested and found to comply with the limits for a Class B digital device, pursuant to part 15 of the FCC Rules. These limits are designed to provide reasonable protection against harmful interference in a residential installation. This equipment generates, uses and can radiate radio frequency energy and, if not installed and used in accordance with the instructions, may cause harmful interference to radio communications. However, there is no guarantee that interference will not occur in a particular installation. If this equipment does cause harmful interference to radio or television reception, which can be determined by turning the equipment off and on, the user is encouraged to try to correct the interference by one or more of the following measures :

- Reorient or relocate the receiving antenna.
- Increase the separation between the equipment and receiver.
- Connect the equipment into an outlet on a circuit different from that to which the receiver is connected.
- Consult the dealer or an experienced radio/TV technician for help.

NOTE:THE MANUFACTURER IS NOT RESPONSIBLE FOR ANY RADIO OR TV INTERFERENCE CAUSED BY UNAUTHORIZED MODIFICATIONS TO THIS EQUIPMENT. SUCH MODIFICATIONS COULD VOID THE USER'S AUTHORITY TO OPERATE THE EQUIPMENT.

MP3
PLAYER

46