


GPS Smart Watch
User Manual



Please make a full charge before using it.
APP:GloryFitPro

English
Please make a full charge before using it.
APP:GloryFitPro
1. Download & Pairing
1.1 Long press POWER key over 5 seconds for turning on
1.2 Scan the QR code and install the GloryFitPro App or
download the GloryFitPro App from App Store, Google Play
and install it.

Compatible system version: Android 5.0 and above, iOS 10.0 and
above
Step 1: Open the GloryFitPro App, allow all the permission and add
device
Step 1: Turn on the Bluetooth of your mobile phone
Step 2: Open GloryFitPro App
Step 3: Click "Add A device" and pair it

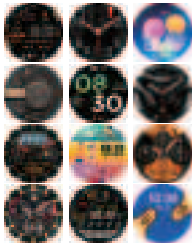
-01-



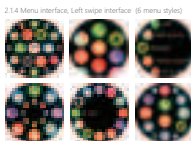
Steps: Check "watch menu/about"MAC address first four
number like "1984", then go mobile phone "setting-Bluetooth"
to search the same Bluetooth name with last 3 numbers
"1984" to finish BT connection as follow operation.

2. Functions on Smart Watch
2.1 Time interface
2.1.1 Power on: Long press POWER key for 5 seconds
2.1.2 Power off: Long press POWER key for 5 seconds
2.1.3 Change watch face: Long press the screen over
3 seconds,there are 12 built-in watch faces for choosing

-02-



-03-



2.1.4 Menu Interface, Left swipe interface (6 menu styles)

2.2 Function menu
2.2.1 Steps counter
2.2.2 Heart rate detection
2.2.3 Sleep tracker

-04-



2.2.4 Weather
2.2.5 Music control
2.2.6 Smart watch supports: GPS BEIDOU GALILEO
GLONASS
2.2.7 Message Notification

-05-

The smart notification function of the smart watch relies on the
notification bar of the mobile phone to work, please make sure
you have allowed all permissions and the GloryFitPro App is
running in the background
3.Functions on GloryFitPro App
3.1 Data sync
All the measured data from smart watch will be sync on
GloryFitPro App automatically (including steps, sleep, heart rate,
blood oxygen, training)
3.2 Watch faces
Over 100 watch faces for choosing, you could download and
custom watch face on GloryFitPro App
3.3 Notifications
Turn on the switch to sync related information to smartwatch
(Phone, Messages, Facebook, Twitter, WhatsApp, WeChat,
Instagram, Skype, KakaoTalk, Line, Others)

-06-

FCC Warning:

This equipment has been tested and found to comply with the limits for a Class B digital device, pursuant to part 15 of the FCC Rules. These limits are designed to provide reasonable protection against harmful interference in a residential installation. This equipment generates, uses and can radiate radio frequency energy and, if not installed and used in accordance with the instructions, may cause harmful interference to radio communications. However, there is no guarantee that interference will not occur in a particular installation. If this equipment does cause harmful interference to radio or television reception, which can be determined by turning the equipment off and on, the user is encouraged to try to correct the interference by one or more of the following measures:

- Reorient or relocate the receiving antenna.
- Increase the separation between the equipment and receiver.
- Connect the equipment into an outlet on a circuit different from that to which the receiver is connected.
- Consult the dealer or an experienced radio/TV technician for help.

Caution: Any changes or modifications to this device not explicitly approved by manufacturer could void your authority to operate this equipment.

This device complies with part 15 of the FCC Rules. Operation is subject to the following two conditions:

(1) This device may not cause harmful interference, and (2) this device must accept any interference received, including interference that may cause undesired operation.

This equipment complies with FCC radiation exposure limits set forth for an uncontrolled environment. This equipment should be installed and operated with minimum distance 0cm between the radiator and your body.