

# Annex B



This test report annex is electronically signed and valid without handwriting signature. For verification of the electronic signatures, the public keys can be requested at the testing laboratory.

**Test report annex authorized:**

René Oelmann  
Lab Manager  
Radio Communications & EMC

## Internal photos of the EUT

Photo 1: mount and device back side OV41



Photo 2: mount and connector OV41

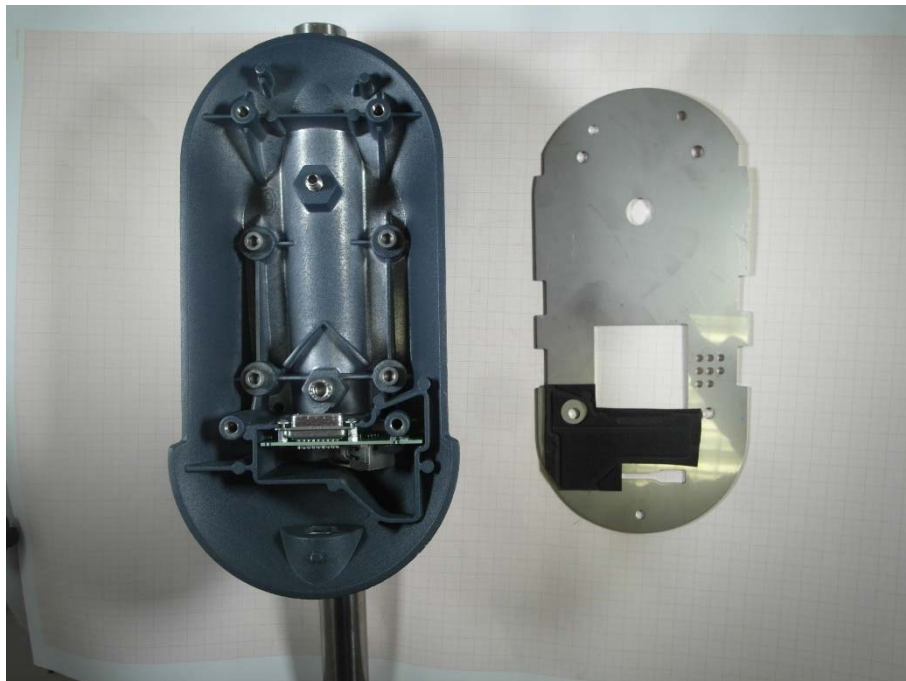


Photo 3: connector OV41

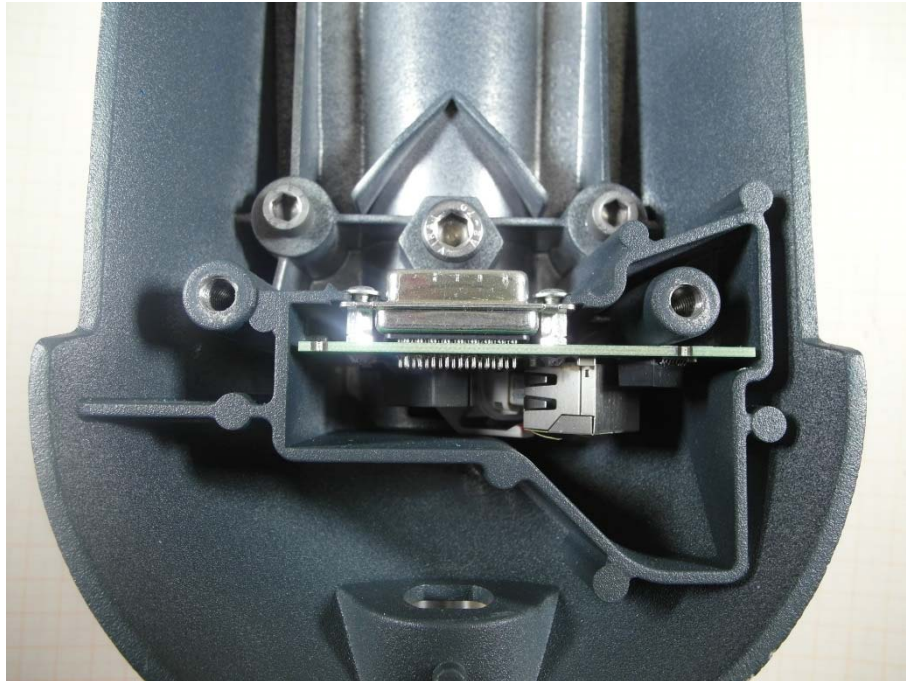


Photo 4: connector board back side OV41

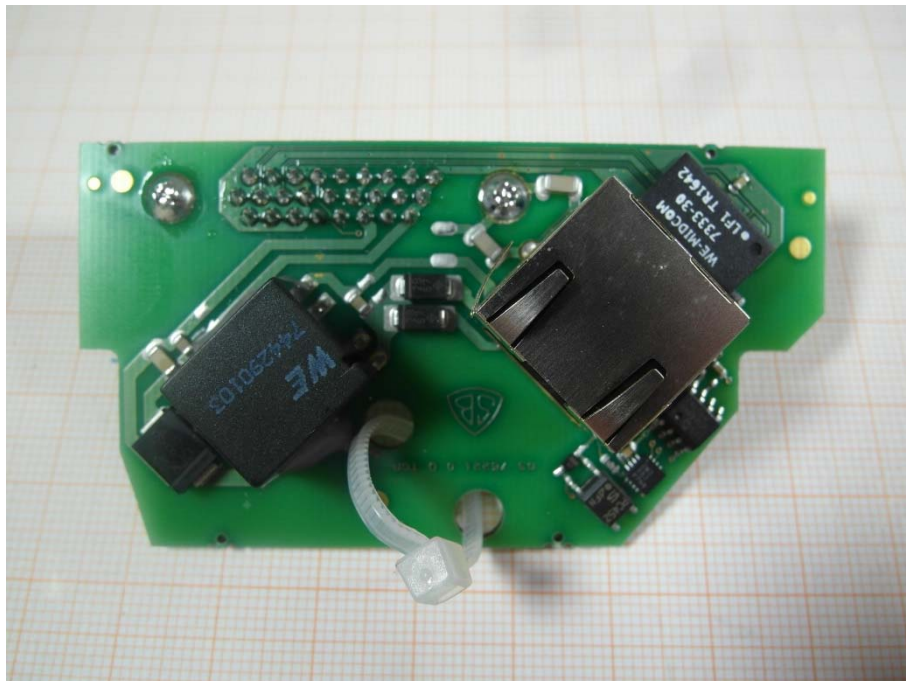




Photo 5: connector board front side OV41



Photo 6: main board top side OV41

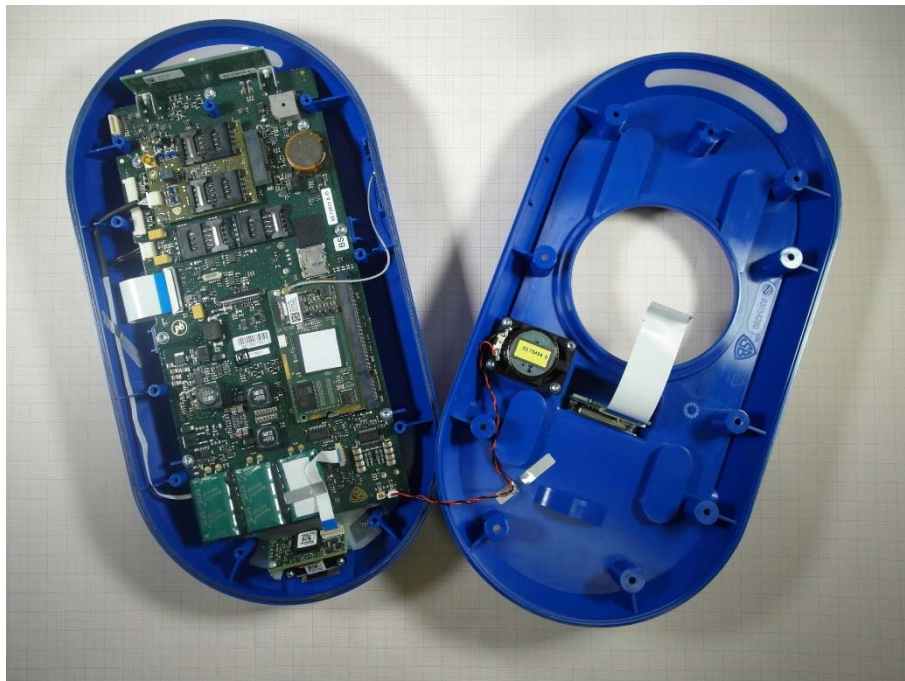


Photo 7: top case back side OV41

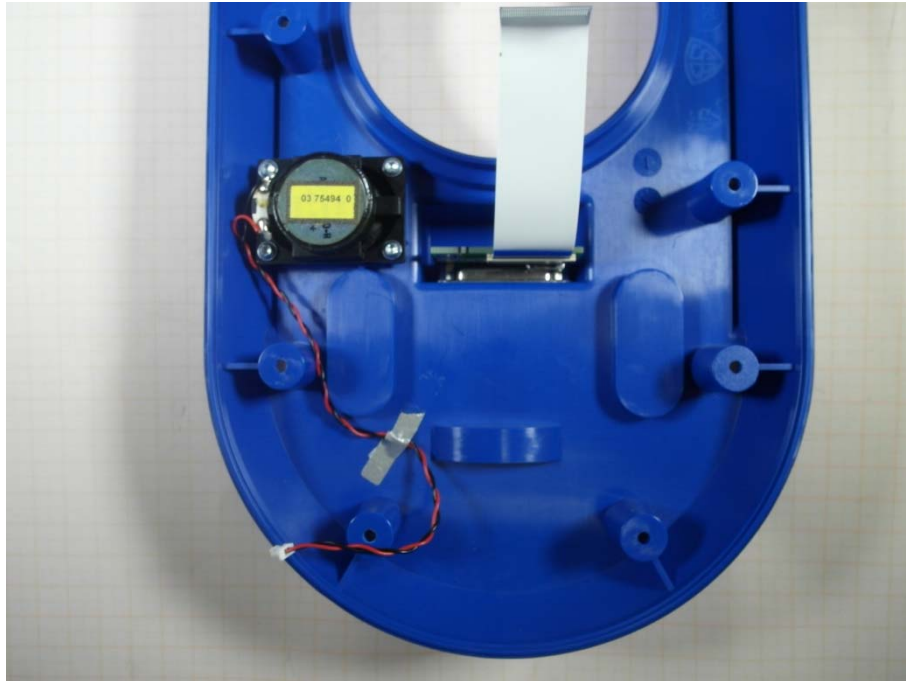


Photo 8: case with main board and additional boards OV41

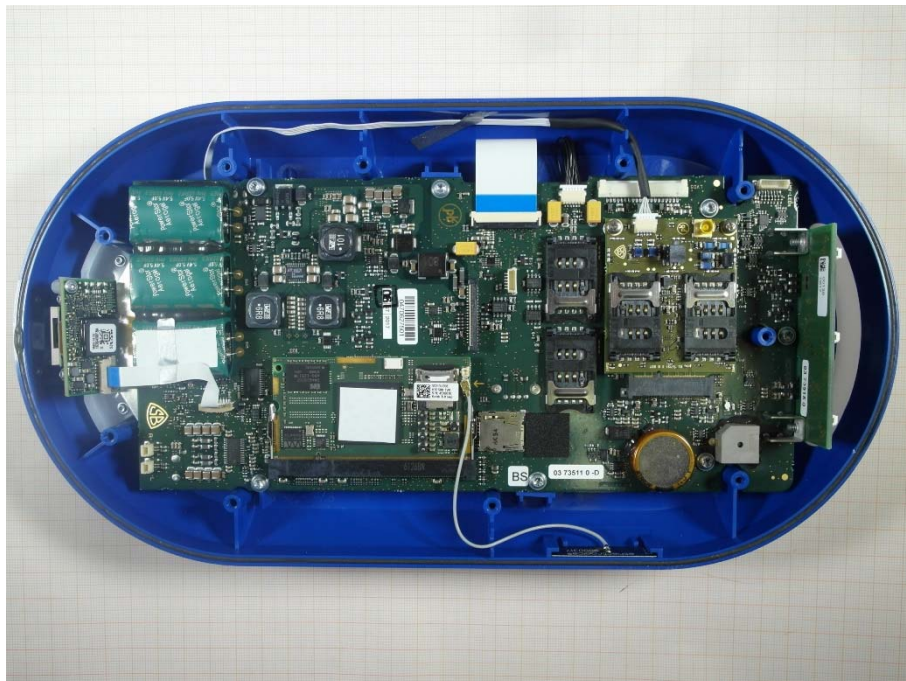




Photo 9: case with main board OV41

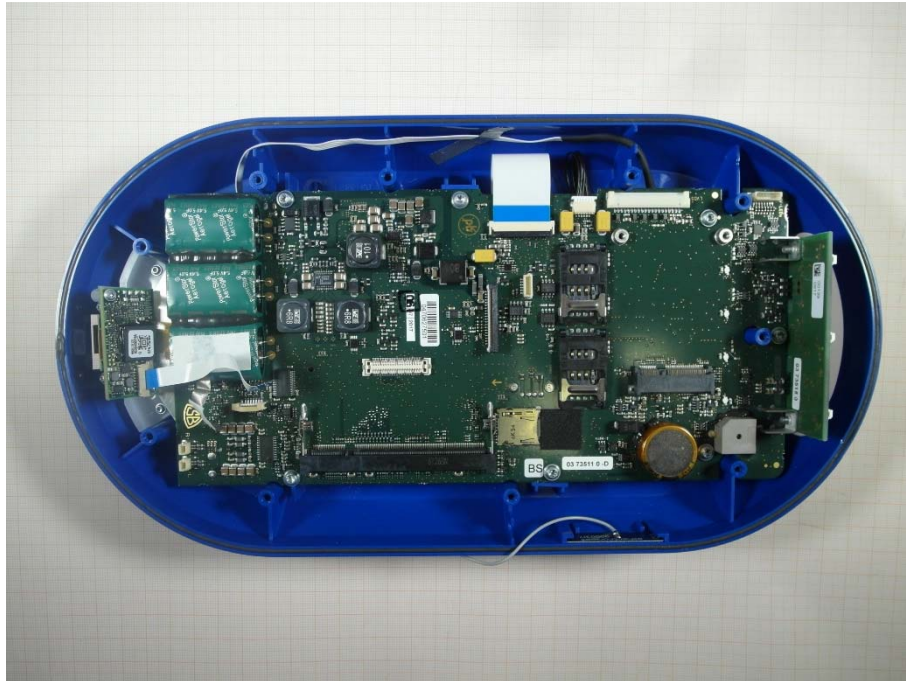


Photo 10: additional board SIM card slots top side OV41

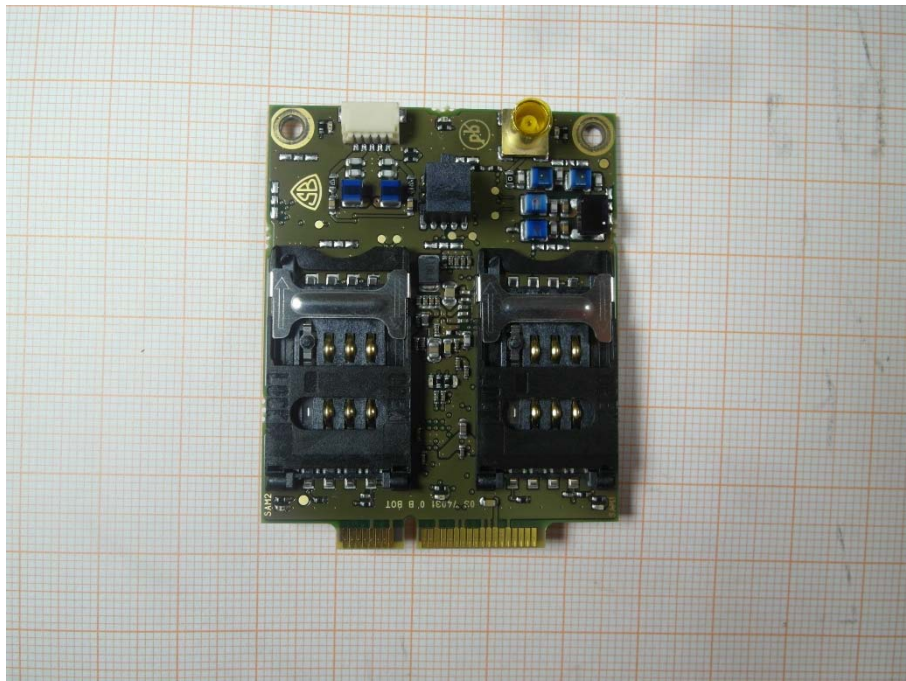


Photo 11: additional board SIM card slots back side OV41

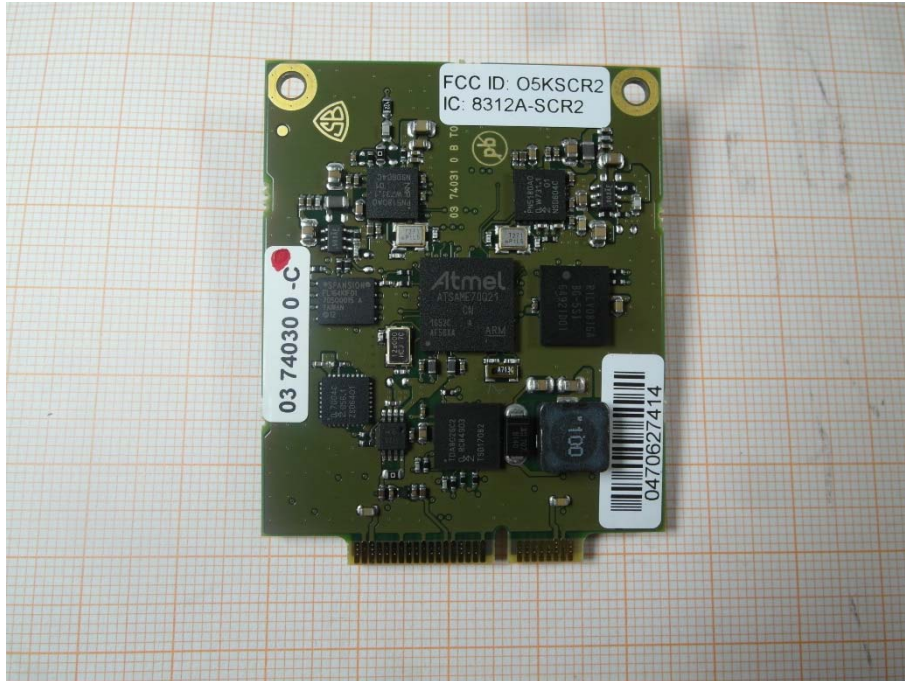


Photo 12: additional board with memory card slot front side OV41





Photo 13: additional board with memory card slot back side OV41



Photo 14: case with mainboard back side OV41





Photo 15: additional board 3 OV41

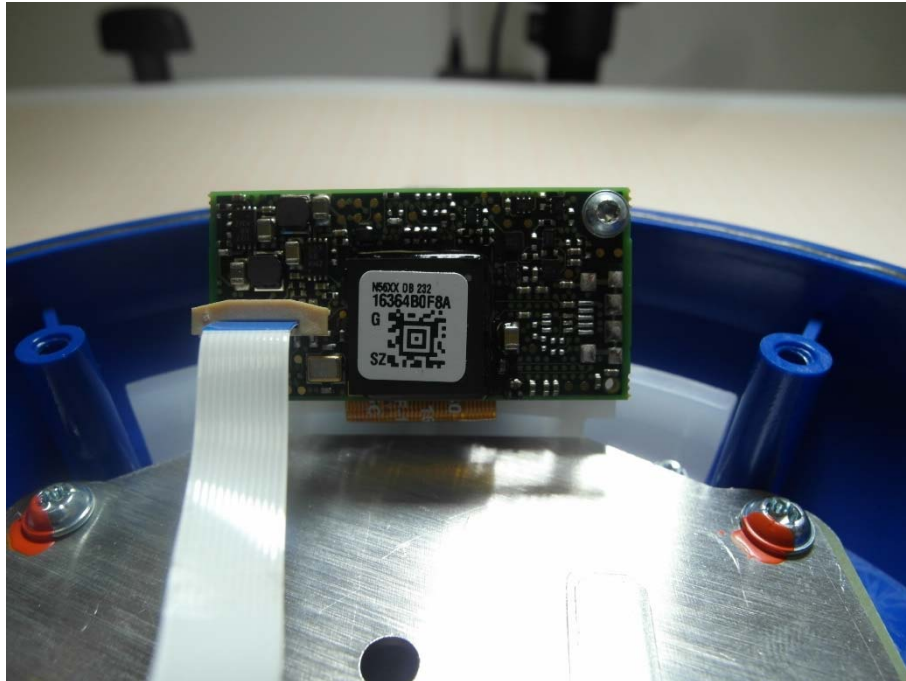


Photo 16: additional board 4 OV41

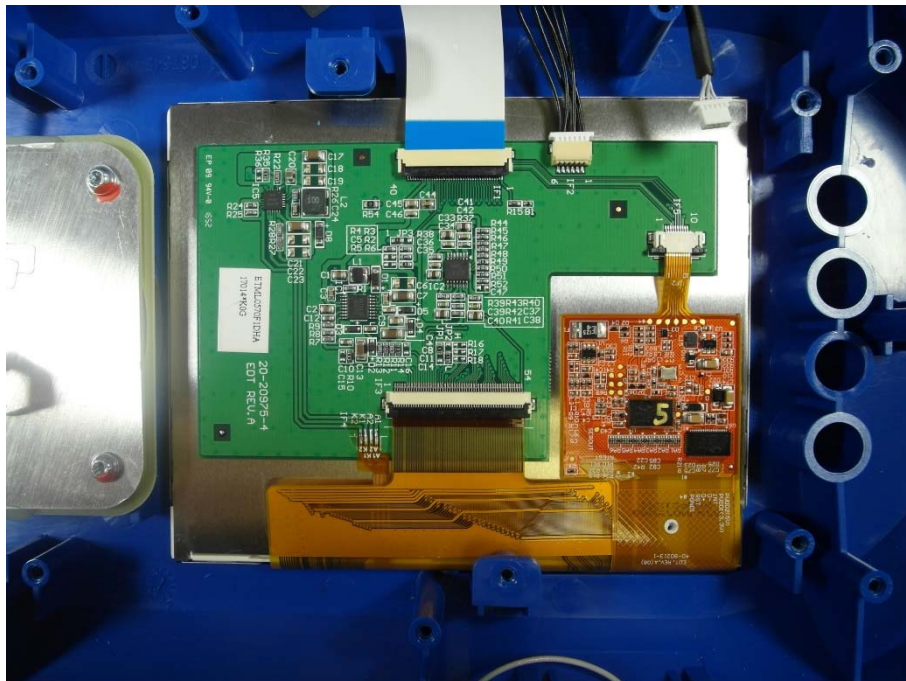


Photo 17: stand and device back side SV51

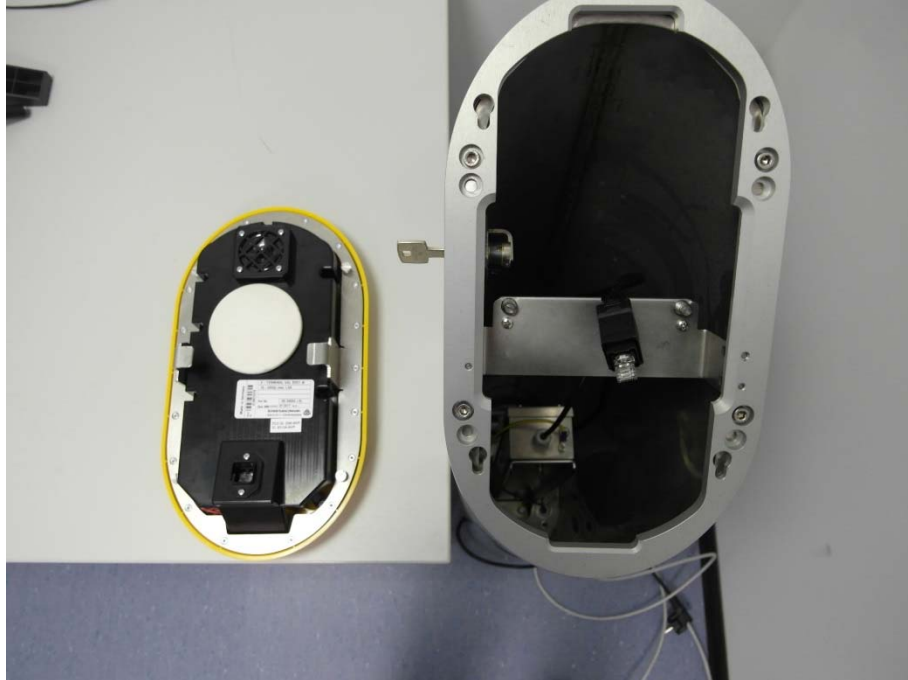


Photo 18: stand inside with LAN connector SV51



Photo 19: device back side SV51



Photo 20: device type identification back side SV51





Photo 21: device back side SV51



Photo 22: device front side SV51



Photo 23: back side and mounting SV51



Photo 24: power connector inside SV51

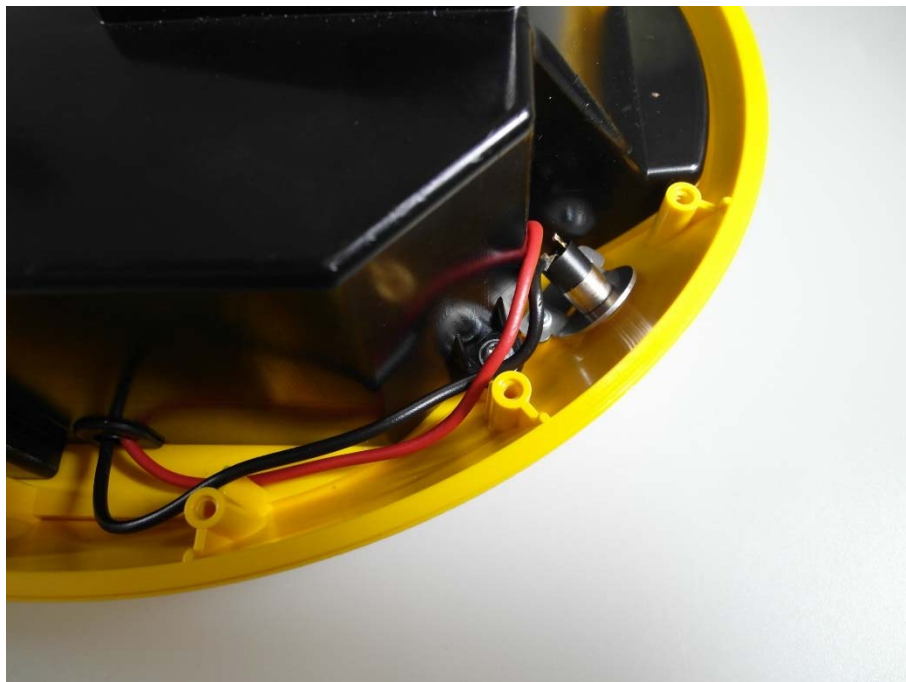


Photo 25: power connector and optical sensor outside SV51



Photo 26: device uncovered SV51





Photo 27: back cover back side with LAN connector, power connector and speaker SV51

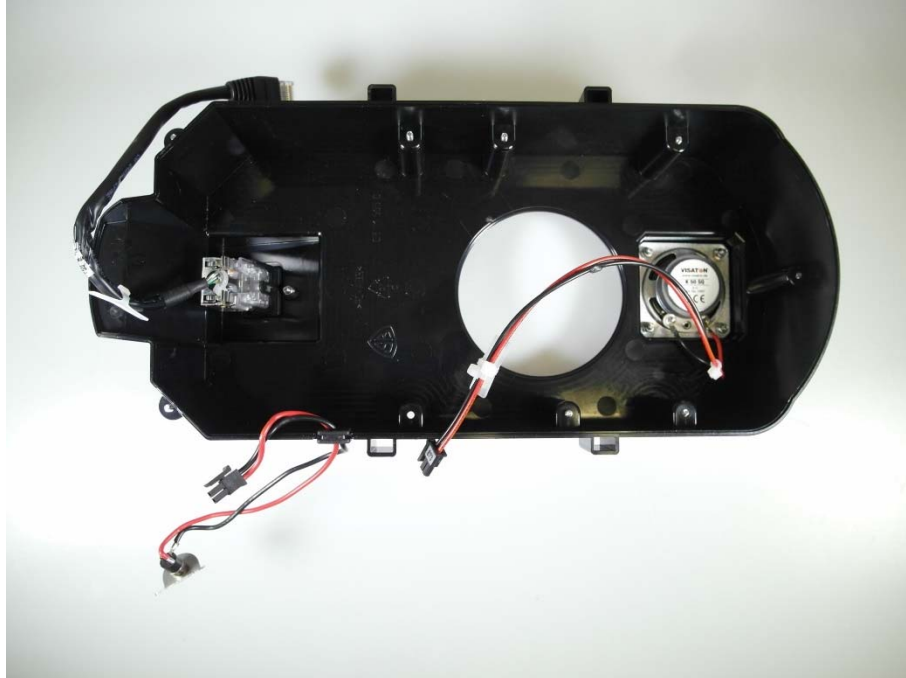


Photo 28: speaker SV51



Photo 29: network connector SV51



Photo 30: case with mainboard and additional boards SV51

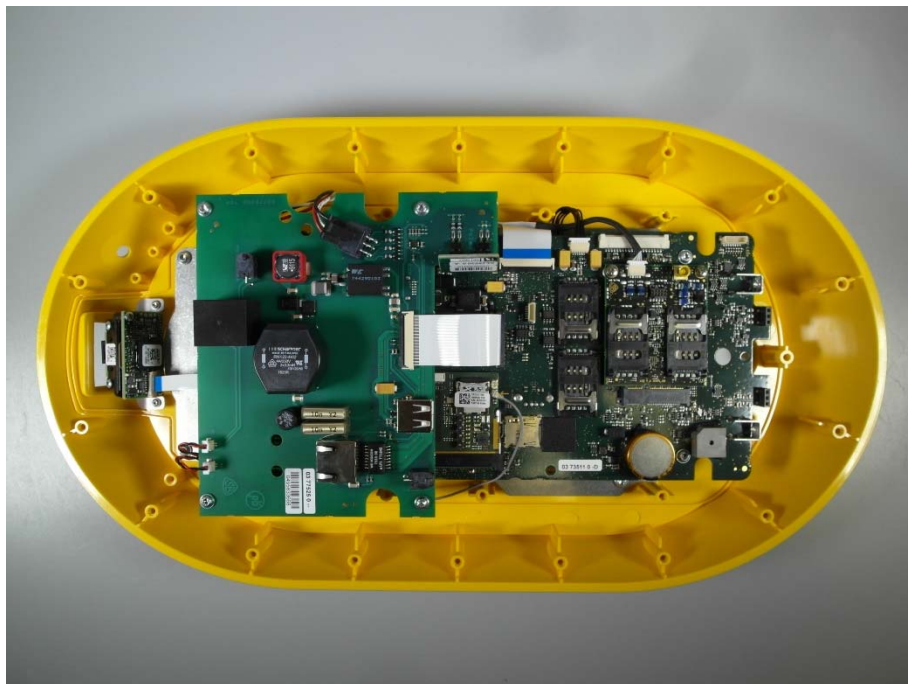


Photo 31: additional board power supply top side SV51

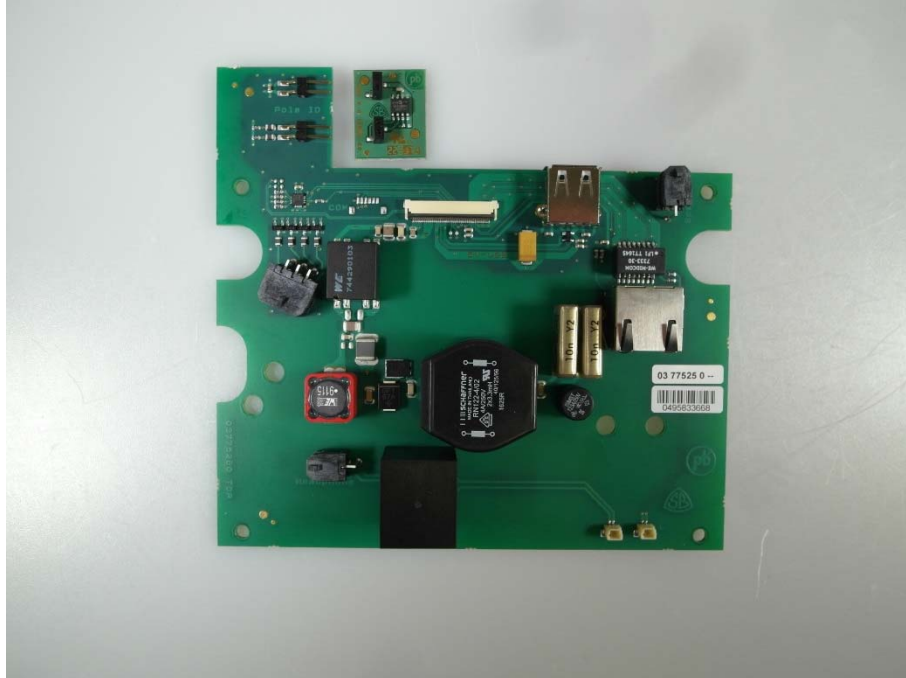


Photo 32: additional board power supply back side SV51

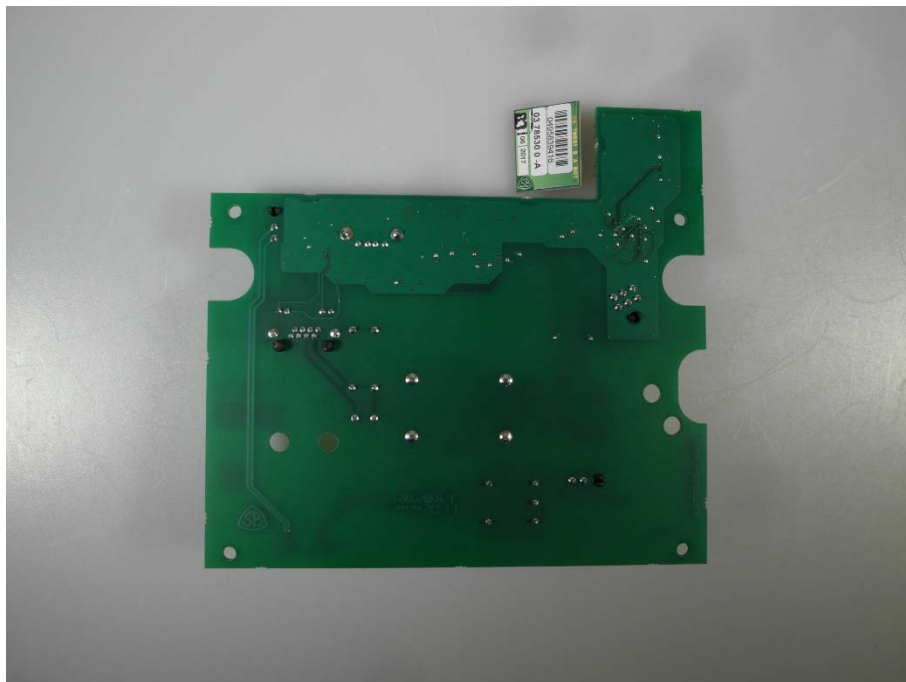




Photo 33: main board with additional Wi-Fi board SV51



Photo 34: additional Wi-Fi board SV51

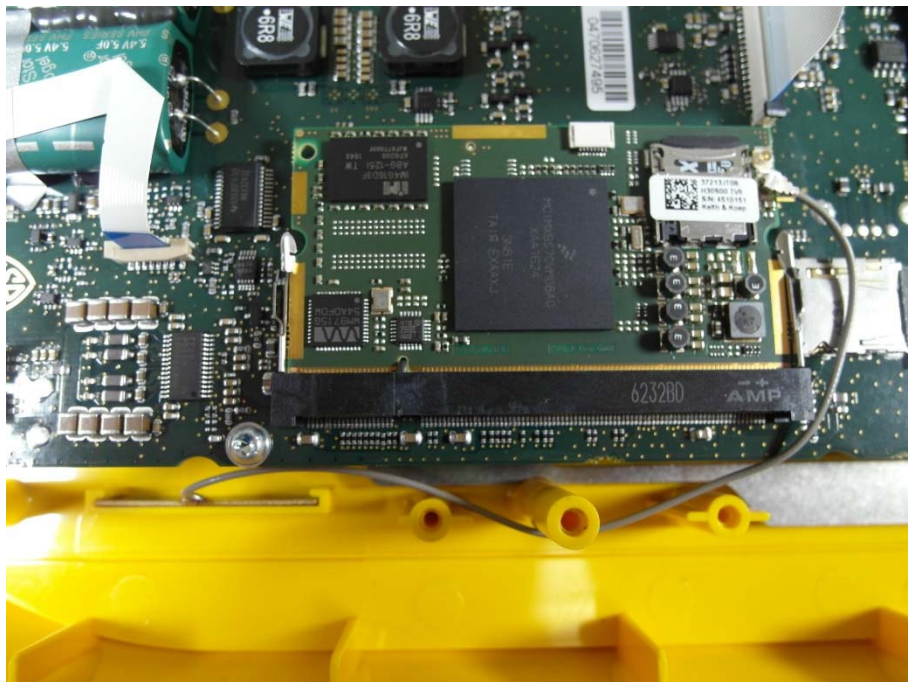


Photo 35: additional Wi-Fi board top side SV51



Photo 36: connector board back side SV51



Photo 37: Wi-Fi antenna top side OV41 / SV51



Photo 38: Wi-Fi antenna back side OV41/ SV51





Photo 39: additional board with SIM card slots top side SV51



Photo 40: additional board with SIM card slots back side SV51



Photo 41: main board top side SV51



Photo 42: main board back side SV51



Photo 43: additional board with display electronic SV51



Photo 44: top cover back side and display back side SV51

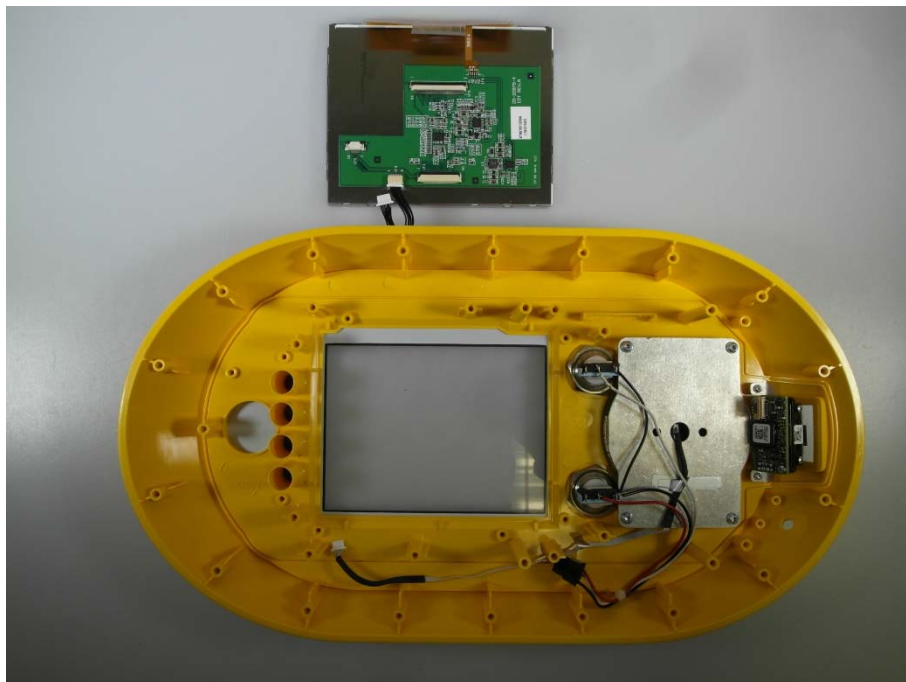




Photo 45: additional board display back side SV51



Photo 46: display front side SV51



Photo 47: top cover back side with buttons and microphone 3 SV51

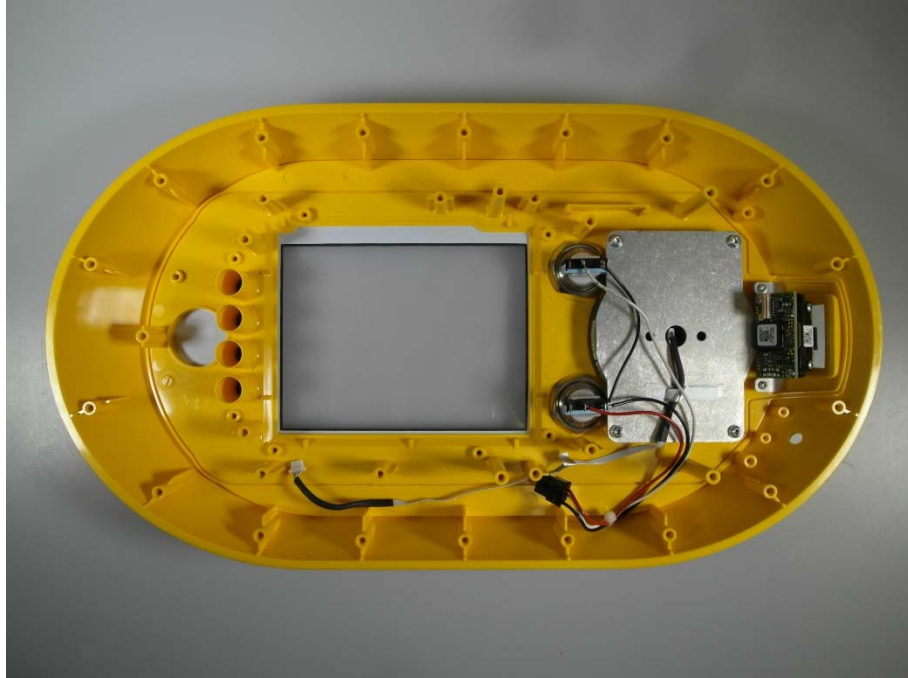


Photo 48: top cover front side SV51



Photo 49: top cover and RFID antenna SV51



Photo 50: RFID antenna back side SV51





Photo 51: RFID antenna front side SV51



Photo 52: additional board optical sensor front side SV51



Photo 53: additional board optical sensor back side SV51



Photo 54: mounting optical sensor SV51



Photo 55: optical sensor back side SV51



Photo 56: optical sensor front side SV51

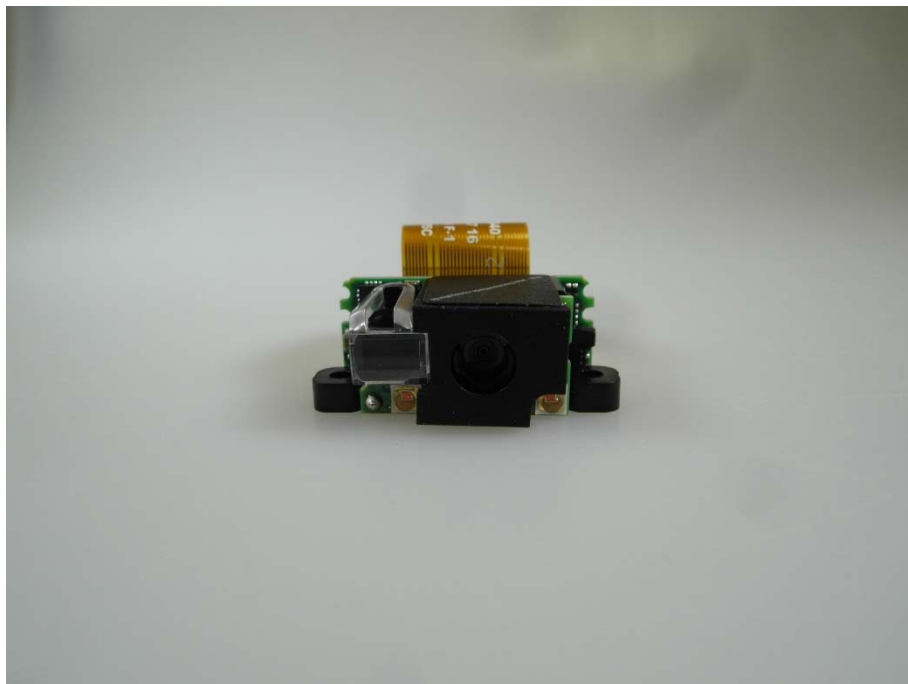




Photo 57: optical sensor top side SV51



## Document history

Version	Applied changes	Date of release
	Initial release	2017-12-20