

Time Commands – Text Based

The time at which tags are read by a reader is particularly important for many applications. For this reason, the reader has three time commands to ensure that the onboard real-time clock is always set accurately.

GET TIME**SET TIME**

These commands allow the current time to be assigned to or retrieved from the reader.

- Times used by this command are always specified in local time, as defined by the TimeZone command.
- Times are always specified by the format YYYY/MM/DD hh:mm:ss.

NOTE: Changes made with this command will take effect immediately.

Example	
Command	>Get Time
Response	>Time = 2002/6/3 9:23:01
	>Set Time = 2002/6/3 19:23:01
	>Time = 2002/6/3 19:23:01

GET TIMEZONE**SET TIMEZONE**

These commands allow the current time zone to be assigned to or retrieved from the reader. The time zone specifies the number of hours that must be added to or subtracted from UTC (Coordinated Universal Time; also known as GMT or Zulu) to determine a local time reference.

For example, to convert from UTC to Pacific Standard Time, set the TimeZone to -8. To convert from UTC to Pacific Daylight Time, set the TimeZone to -7.

- The default setting for this command is -7 hours (Pacific Daylight Time) because PDT is UTC time *minus 7 hours*.
- For more information about time zones, servers and UTC, refer to the Website listed under the Get/Set TimeServer command.

The TimeZone parameter is only useful if the TimeServer is used to automatically set the system clock. In this case, the TimeServer always retrieves the time in UTC format and will need to be offset to reflect local time using this parameter.

NOTE: Changes made with this command will take effect immediately.

Example	
Command	>Get TimeZone
Response	>TimeZone = -8
	>Set TimeZone = 3
	>TimeZone = 3

GET TIMESERVER**SET TIMESERVER**

The reader uses the Internet to accurately set its internal clock every time it is rebooted. The protocol it uses is called the Daytime Protocol (RFC-867) which typically returns the time in UTC format.

In order to use this feature, a TimeServer must be specified. This is the network address of a machine that is constantly running the Daytime Protocol. In the US there are a number of machines owned and operated by the Government explicitly providing the time and date to Internet users.

- By default the reader is configured to connect to one of these machines on boot-up to get the current time.
- For a more in-depth description of this server, and a list of other publicly accessible Daytime Protocol Servers, see:
<http://www.boulder.nist.gov/timefreq/service/its.htm>
- The default setting for this command is 132.163.4.101, a primary NIST network time server. Some alternative time servers are:

```
time-a.nist.gov /      129.6.15.28
time-b.nist.gov /      129.6.15.29
time.nist.gov   /      192.43.244.18
```

NOTE: After making changes with this command, you must reboot the reader to implement the changes.

Example	
Command	>Get TimeServer
Response	>TimeServer = 129.6.15.28
	>Set TimeServer = 129.6.15.28
	>TimeServer = 129.6.15.28

The TimeServer is only used once when the reader is booted up. A message in the boot sequence (sent out to the serial console) indicates success or failure of this option.

For example, a successful boot sequence will report the following messages to the serial console:

```
Booting Alien RFID Reader
Boot> Boot Level 1 (Console Communication) : Success
Boot> Boot Level 2 (Reader Communication) : Success
Boot> Boot Level 3 (Tag Manager) : Memory for 1000 Tags
```

```
Boot> Boot Level 4 (System Settings) : Success
Boot> Boot Level 5 (Network) : Success - IP Address is 10.1.60.4
Boot> Boot Level 6 (Telnet Interface) : Success - Port 23 Ready
Boot> Boot Level 7 (Web Interface) : Success
Boot> Boot Level 8 (Network Time Service) : Success - Time Set to
2002/08/23 16:50:24
Boot> Ready
```

Time Commands – Web Based

Time commands are issued via the Web page to set up and access reader time parameters.

Web view Time tab covers all Get and Set time commands.

General	Network	Time	External I/O	Autonomous Mode	Tag List	Displays
Time (yy/mm/dd hh:mm:ss - Local Time)			<input type="text" value="1986/01/29 23:38:30"/>			
Time Server			<input type="text" value="129.6.45.29"/>			
Time Zone (+/- hours from UTC)			<input type="text" value="+7"/>			
<input type="button" value="Submit"/>						

COMMANDS/OPERATIONS VIA WEB TIME TAB

Command equivalents found on the Web-based “Time” tab are:

- Get | Set Time
- Get | Set TimeZone
- Get | Set TimeServer

External I/O Commands

These commands allow you to configure and retrieve current data regarding the reader's external output functions.

SET EXTERNALOUTPUT GET EXTERNALOUTPUT

The reader controls four external output pins, which can subsequently be used to control external devices such as doors/gates, security lights, etc. Please refer to Chapter 1, Specifications section in this document for pinout diagrams.

With this command you can set the external output pin values. The command takes a single parameter that represents the bit mask settings of the external pins.

- Bit 0 represents the state of pin 0, and Bit 1 represents the state of pin 1, Bit 2 is state of pin 2 and Bit 3 is state of pin 3.

For example, to set pin 1 to high and pin 0 on low, use the bit mask of 10_{binary} which translates to 2_{decimal}

NOTE: Changes made with this command will take effect immediately.

Example	
Command	>Set ExternalOutput = 2
Response	>ExternalOutput = 2
Command	>Get ExternalOutput
Response	>ExternalOutput = 2

GET EXTERNALINPUT

The reader also monitors four external input pins, which can subsequently be controlled by external proximity detectors and other input devices such as “magic-eyes” and magnetic switches. This command allows these external input pin values to be obtained. Please refer to Chapter 1, Specifications section in this document for pinout diagrams.

- The command returns a single byte result that represents the bit mask settings of the external pins. Bit 0 represents the state of pin 0, and Bit 1 represents the state of pin 1, Bit 2 is state of pin 2 and Bit 3 is state of pin 3.

NOTE: Changes made with this command will take effect immediately.

Example	
Command	>Get ExternalInput
Response	>ExternalInput = 2 (i.e., binary 10)

External I/O Commands – Web Based

Time commands are issued via the Web page to set up and access external input and output parameters.

Web view I/O tab covers all Get and Set External I/O commands.

General	Network	Time	External I/O	Autonomous Mode	Tag List	Displays
<div>External Input (read-only) 0</div> <div>External Output (write-only) 0</div> <div>Submit</div>						

COMMANDS/OPERATIONS ON WEB EXTERNAL I/O TAB

Command equivalents found on the Web-based “External I/O” tab are:

- Get | Set ExternalOutput
- Get ExternalInput

Tag List Commands – Command Line

Tag list commands allow you to retrieve immediate listings of tags that have been read and saved by the reader, and to assign and retrieve tag list functional parameters.

NOTE: Web versions of these operations are shown in the next section.

GET TAGLIST (N)

You can retrieve the reader's stored tag list either a single time (Get TagList) or multiple times (Get TagList n).

- The maximum number of tags that can be stored in the tag list is 1000.

Using the Get TagList to retrieve the stored list only once:

- **If the reader is currently in interactive mode**, the reader will immediately perform a full tag search (read and report) and display its current internal tag list. The reply will be a multi-line command with each line listing an active tag.

If the tag list is empty, the message "(No Tags)" will be returned.

- **If the reader is in Autonomous mode**, the reader will display its current internal tag list only.

Using the Get TagList with an optional integer 'n' instructs the command to be repeated 'n' times before a combined result is returned.

The format of the data returned by this command is specified using the Set TagListFormat command, described below.

Example	
Command	Get TagList
Response	Tag: 0002 0030 A233 0400 0000 1023, CRC: B340, Disc: 2002/03/23 15:36:33, Count: 4, Ant: 0 Tag: 8080 AAAB ECF0 0000 125E 0102, CRC: 3021, Disc: 2002/03/22 12:26:01, Count: 3, Ant: 1
Command	Get TagList
Response	(No Tags)

SET TAGLISTFORMAT GET TAGLISTFORMAT

The Get and Set TagListFormat commands specify the formatting of tag lists. The command itself takes a text string as its argument, and can be one of the following:

The format may be one of the following:

TagListFormat	Description
text	Tag lists displayed as plain text messages, one tag ID per line.
xml	Tag lists are displayed in XML text format

- Text formatted tag lists take the following form:

```

Tag:1115 F268 81C3 C012 0000 1E45, CRC:2483, Disc:2003/01/21 09:00:51,
Count:1, Ant:0
Tag:0100 0100 0002 0709 0303 5752, CRC:8594, Disc:2003/01/21 11:00:10,
Count:1, Ant:0
Tag:1054 A334 54E1 7409 A434 8972, CRC:2083, Disc:2003/01/21 11:50:03,
Count:1, Ant:0

```

- XML Formatted tag lists take the form:

```

<Alien-RFID-Tag-List>
<Alien-RFID-Tag>
  <TagID>0102 0304 0506 0709 0020 2020</TagID>
  <CRC>87B4</CRC>
  <DiscoveryTime>2003/01/17 11:37:01</DiscoveryTime>
  <Antenna>0</Antenna>
  <ReadCount>1413726</ReadCount>
</Alien-RFID-Tag>
<Alien-RFID-Tag>
  <TagID>2283 1668 ADC3 E804 3403 3030</TagID>
  <CRC>9FD0</CRC>
  <DiscoveryTime>2003/01/19 07:01:19</DiscoveryTime>
  <Antenna>0</Antenna>
  <ReadCount>1</ReadCount>
</Alien-RFID-Tag>
</Alien-RFID-Tag-List>

```

In all cases the following information is reported per tag:

- TagID: The 96 bit tag ID.
- CRC: The checksum built into the tag that guarantees that the tagID was read correctly.
- Disc: The time the tag was first read by the reader in the current session.
- Count: The number of times the tag has been read in the current session.
- Ant: The antenna port number that the tag was LAST seen at.

Example	
Command	Set TagListFormat = XML
Response	TagListFormat = XML
Command	Get TagListFormat
Response	TagListFormat = Text

NOTE: Changes made with this command will take effect immediately.

SET ACQUIREMODE GET ACQUIREMODE

Whenever the reader is called upon to read a tag it does so using the current AcquireMode. Currently the allowable modes are as follows:

AcquireMode	Description
Inventory	Perform full inventory of multiple tags.
Global Scroll	Perform fast search for single tag.

The default setting is Inventory

- **Inventory Mode**
The Inventory acquire mode performs a full anti-collision search on tags in the reader's field of view. This method will locate and distinguish multiple tags in front of the reader at the same time.
- **Global Scroll Mode**
The Global Scroll acquire mode instructs the reader to read a single tag repeatedly. This is a very fast tag reading method which is most effective when only one tag at a time is expected to be within reader range, as in conveyor belt applications. Under such circumstances, the performance for single tag reading is considerably faster than repeatedly doing a full tag search using the Inventory mode.

NOTE: If multiple tags are in range of the reader when this mode is used, the reader will either select one of the tags (usually the "strongest" or "loudest") to read and report, or will read none of the tags.

NOTE: Changes made with this command will take effect immediately.

CLEAR TAGLIST

The Clear TagList command instructs the reader to immediately clear its internal tag list.

Example	
Command	>Clear TagList
Response	>Tag List has been reset!

NOTE: Changes made with this command will take effect immediately.

GET PERSISTTIME
SET PERSISTTIME

The PersistTime specifies the length of time a tag's data will remain in the reader's internal list of active tags.

- Persist times are specified in seconds.
- The default setting is 10 seconds.
- Setting the persist time to a positive number (1-n) will establish a persist time of the desired number of seconds
- A zero persist time (0) will guarantee that tags are not stored in the tag list. However issuing a get taglist command in interactive mode will return any tags immediately found even though they won't be stored in the taglist.
- Setting the persist time to -1 will cause the history to build indefinitely until a get taglist command is issued; at this point the tag list is returned, and then immediately cleared.

The maximum number of tags that can be stored in the tag list is 1000. Once this tag limit is reached, error messages will be reported to the serial console, and no new tags will be added to the list until room is available.

NOTE: Changes made with this command will take effect immediately.

Example	
Command	>Get PersistTime
Response	>PersistTime=10
Command	>Set PersistTime=300
Response	>PersistTime=10

Tag List Commands – Web Based

Tag List commands are issued via the Web page to set up and access tag information.

Allows you to:

- Get and Set Acquire Mode...
- Get and Set Persist Time...
- Display TagList...
- and
- Clear TagList.

Tag ID	CRC	Discover Time	Antenna	Read Count
0000 0000 0000 0007	91DE	1997/02/22 14:09:57	0	1

Total Tags = 1 Total Reads = 1

Tag List displays:

- Tag ID
- CRC
- Discover time
- Reading Antenna
- Read count

COMMANDS/OPERATIONS ON WEB TAG LIST TAB

NOTE : Every time the Tag List page is loaded / refreshed, it is the equivalent of issuing a Get Taglist command to the reader. The results are displayed on the page.

Command equivalents found on the Web-based “Tag List” tab are:

- Get | Set AcquireMode
- Get | Set PersistTime
- Get TagList(n)

Includes tag ID, crc, discover time, reading antenna and read count.

- Clear Taglist

Autonomous Mode Commands

Autonomous mode is a multi-stage configuration and operation mode that enables hands-free monitoring of tags.

- The first stage requires you to issue a series of configuration commands to the reader. These commands detail how and when to read tags, and then when tags are found, who to tell.
- Once configured, the reader can be left to operate on its own.

For a detailed description of the Autonomous mode system please refer to Chapter 4 of this guide.

SET AUTOMODE

GET AUTOMODE

The AutoMode command turns on or off the automode.

- Valid command parameters are ON and OFF
- The default setting is OFF

NOTE: Changes made with this command will take effect immediately.

Example	
Command	>Get AutoMode
Response	>AutoMode=ON
Command	>Set AutoMode=on
Response	>AutoMode=ON

SET AUTOWAITOUTPUT

GET AUTOWAITOUTPUT

The AutoWaitOutput specifies the output pin settings to effect while in the wait state of autonomous mode. The parameter is a bit mask for the four external output pins, where a '1' sets a pin to high, and a '0' sets a pin to low. Pin 1 is specified by bit one in the mask, and Pin 0 is specified by bit zero in the mask etc...

NOTE: Changes made with this command will take effect immediately.

Example	
Command	>Get AutoWaitOutput
Response	> AutoWaitOutput =0
Command	>Set AutoWaitOutput =3 //Turn pins 0 and 1 to high
Response	> AutoWaitOutput =3

SET AUTOSTARTTRIGGER GET AUTOSTARTTRIGGER

The AutoStartTrigger specifies the external input pins to monitor to cause the automode to jump from wait state to work state. Triggers can either be a pin going from low to high (rising edge) to high to low (falling edge). For each type of change, an integer bit mask must be provided to specify the pins to listen for changes on.

The command takes two parameters, a rising edge bit mask and a falling edge bit mask.

NOTE: Changes made with this command will take effect immediately.

Example	
Command	>Get AutoStartTrigger
Response	> AutoStartTrigger(rising, falling)= 0, 0
Command	>Set AutoStartTrigger =3, 0 //Listen for rising edges on pins 0 and 1
Response	> AutoStartTrigger (rising, falling)= 3, 0

SET AUTOWORKOUTPUT GET AUTOWORKOUTPUT

The AutoWorkOutput specifies the output pin settings to effect while in the work state of autonomous mode. The parameter is a bit mask for the four external output pins, where a '1' sets a pin to high, and a '0' sets a pin to low. Pin 1 is specified by bit one in the mask, and Pin 0 is specified by bit zero in the mask etc...

NOTE: Changes made with this command will take effect immediately.

Example	
Command	>Get AutoWorkOutput
Response	> AutoWorkOutput =0
Command	>Set AutoWorkOutput =3 //Turn pins 0 and 1 to high
Response	> AutoWorkOutput =3

SET AUTOACTION GET AUTOACTION

The AutoAction command specifies the action to perform when running in the work mode of auto mode. This can be one of the following options:

AutoAction	Description
Acquire	Perform an acquire action, as specified by the AcquireMode options.

- The default setting is Acquire

NOTE: Changes made with this command will take effect immediately.

Example	
Command	>Get AutoAction
Response	> AutoAction = Acquire
Command	>Set AutoAction =Acquire
Response	> AutoAction = Acquire

SET AUTOSTOPTRIGGER

GET AUTOSTOPTRIGGER

The AutoStopTrigger specifies the external input pins to monitor to cause the automode to jump from work state to evaluate state. Triggers can either be a pin going from low to high (rising edge) to high to low (falling edge). For each type of change, an integer bit mask must be provided to specify the pins to listen for changes on.

The command takes two parameters, a rising edge bit mask and a falling edge bit mask.

NOTE: Changes made with this command will take effect immediately.

Example	
Command	>Get AutoStopTrigger
Response	> AutoStopTrigger(rising, falling)= 0, 0
Command	>Set AutoStopTrigger =3, 0 //Listen for rising edges on pins 0 and 1
Response	> AutoStopTrigger (rising, falling)= 3, 0

SET AUTOSTOPTIMER

GET AUTOSTOPTIMER

The AutoStopTimer offers an alternative way to jump from work state to evaluate state. This is a time based jump, that will happen after the timer period specified by this command expires. The parameter is a single time period, specified in milliseconds.

NOTE: Changes made with this command will take effect immediately.

Example	
Command	>Get AutoStopTimer
Response	> AutoStopTimer (ms) = 0
Command	>Set AutoStopTimer =1000 //Acquire for 1sec then evaluate
Response	> AutoStopTimer (ms)= 1000

SET AUTOTRUEOUTPUT GET AUTOTRUEOUTPUT

The AutoTrueOutput specifies the output pin settings to effect if the evaluate mode of autonomous mode evaluates to true. The parameter is a bit mask for the four external output pins, where a '1' sets a pin to high, and a '0' sets a pin to low. Pin 1 is specified by bit one in the mask, and Pin 0 is specified by bit zero in the mask etc...

NOTE: Changes made with this command will take effect immediately.

Example	
Command	>Get AutoTrueOutput
Response	> AutoTrueOutput =0
Command	>Set AutoTrueOutput =3 //Turn pins 0 and 1 to high
Response	> AutoTrueOutput =3

SET AUTOTRUEPAUSE GET AUTOTRUEPAUSE

The AutoTruePause specifies a millisecond pause to effect if the autonomous evaluation mode evaluates to true. This pause will occur after the AutoTrueOutput command has been processed.

NOTE: Changes made with this command will take effect immediately.

Example	
Command	>Get AutoTruePause
Response	> AutoTruePause (ms)=0
Command	>Set AutoTruePause =500 //Pause for half a sec.
Response	> AutoTruePause = 500

SET AUTOFALSEOUTPUT GET AUTOFALSEOUTPUT

The AutoFalseOutput specifies the output pin settings to effect if the evaluate mode of autonomous mode evaluates to false. The parameter is a bit mask for the four external output pins, where a '1' sets a pin to high, and a '0' sets a pin to

low. Pin 1 is specified by bit one in the mask, and Pin 0 is specified by bit zero in the mask etc...

NOTE: Changes made with this command will take effect immediately.

Example	
Command	>Get AutoFalseOutput
Response	> AutoFalseOutput =0
Command	>Set AutoFalseOutput =3 //Turn pins 0 and 1 to high
Response	> AutoFalseOutput =3

SET AUTOFALSEPAUSE

GET AUTOFALSEPAUSE

The AutoFalsePause specifies a millisecond pause to effect if the autonomous evaluation mode evaluates to false. This pause will occur after the AutoFalseOutput command has been processed.

NOTE: Changes made with this command will take effect immediately.

Example	
Command	>Get AutoFalsePause
Response	> AutoFalsePause (ms)=0
Command	>Set AutoFalsePause =500 //Pause for half a sec.
Response	> AutoFalsePause = 500

AUTOMODERESET

The AutoModeReset command will reset all auto mode parameters to their default values, including setting the auto mode to off.

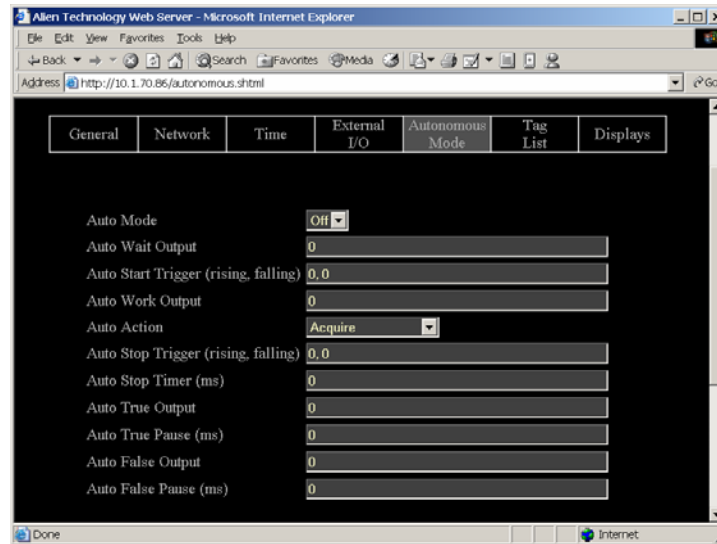
NOTE: Changes made with this command will take effect immediately.

Example	
Command	>AutoModeReset
Response	> All AutoMode settings have been reset !

Autonomous Mode Commands – Web Based

Autonomous Mode commands are issued via the Web page to set up and access autonomous mode parameters.

Web view
Autonomous Mode
tab covers all Get
and Set
autonomous mode
commands.



COMMANDS/OPERATIONS ON WEB AUTONOMOUS MODE TAB

Command equivalents found on the Web-based “Autonomous Mode” tab are:

- Get | Set AutoMode
- Get | Set AutoWaitOutput
- Get | Set AutoStartTrigger
- Get | Set AutoWorkOutput
- Get | Set AutoAction
- Get | Set AutoStopTrigger
- Get | Set AutoStopTimer
- Get | Set AutoTrueOutput
- Get | Set AutoTruePause
- Get | Set AutoFalseOutput
- Get | Set AutoFalsePause

Notify Mode Commands

The Notify Mode commands are used to set up automated event notification when the reader is running in Auto Mode.

SET NOTIFYMODE GET NOTIFYMODE

The NotifyMode command turns on or off the notify mode.

- Valid command parameters are ON and OFF
- The default setting is OFF

NOTE: Changes made with this command will take effect immediately.

Example	
Command	>Get NotifyMode
Response	> NotifyMode =ON
Command	>Set NotifyMode =on
Response	> NotifyMode =ON

GET NOTIFYADDRESS SET NOTIFYADDRESS

The Notify Address command pair specify where notification messages should be sent when they occur and how they should be sent. The form of the address determines the method of delivery.

Currently there are 3 delivery methods supported as shown in the table below:

NotifyAddress	Description
user@domain.com	Send a message via e-mail to the address specified. The address is specified in standard email form, i.e., user@domain.com <i>NOTE: the MailServer parameter must be configured for this to work.</i>
hostname:port	Send a message to a specified port on a networked machine. The address takes the form "hostname:port." For example, "123.01.02.98:3450" or "listener.alientechnology.com:10002"
serial	Send a message to the serial connection. The word "serial" is used as the address. The word is not case sensitive.

NOTE: Changes made with this command will take effect immediately.

Example	
Command	>Get NotifyAddress
Response	>NotifyAddress=10.1.0.12:4000
Command	>Set NotifyAddress=user@msn.com
Response	>NotifyAddress=user@msn.com

GET NOTIFYTIME**SET NOTIFYTIME**

The Notify Time commands assign and retrieve the time interval for automatic tag list pushing to a listening machine.

- The time is specified in seconds.
- If set to zero or a negative number the time-based automatic notification is disabled.
- When set to a positive number of seconds, a standard notification message will be sent out each period.

NOTE: Changes made with this command will take effect immediately.

Example	
Command	>Get NotifyTime
Response	>NotifyTime=30
Command	>Set NotifyTime=30
Response	>NotifyTime=30

GET NOTIFYTRIGGER**SET NOTIFYTRIGGER**

The NotifyTrigger commands specify and retrieve the event conditions (other than time-based) upon which a notification message is sent out to any listener.

Notify messages can be triggered under any of the following conditions:

Trigger Name	Meaning
ADD	Send message when new tag is read and added to the TagList
REMOVE	Send message when a tag is removed from the TagList
CHANGE	Send message when a tag is either added to or removed from the TagList
TRUE	Send messages when the evaluation task of the autonomous state loop evaluates to true, i.e., typically when tags are added
FALSE	Send messages when the evaluation task of the autonomous state loop evaluates to false, i.e., typically when tags are not found

NOTE: Changes made with this command will take effect immediately.

Example	
Command	>Get NotifyTrigger
Response	>NotifyTrigger= REMOVE
Command	>Set NotifyTrigger=ADD
Response	>NotifyTrigger=ADD

GET NOTIFYFORMAT SET NOTIFYFORMAT

The NotifyFormat parameter specify the format of any notification message.

The format may be one of the following:

NotifyFormat	Description
text	Tag lists are sent out as plain text messages, one tag ID per line.
xml	Tag lists are sent out as an XML text format

- Text formatted tag lists take the form:

```
#Alien RFID Reader Auto Notification Message
#ReaderName: Spinner Reader
#ReaderType: Alien RFID Tag Reader (Class BPT / 2450Mhz)
#IPAddress: 10.1.70.13
#CommandPort: 23
#Time: 2003/01/21 12:48:59
#Reason: TEST MESSAGE
Tag:1115 F268 81C3 C012 0020 2202, CRC:2483, Disc:2003/01/21 09:00:51,
Count:1, Ant:0
Tag:0100 0100 0002 0709 1202 E404, CRC:8594, Disc:2003/01/21 11:00:10,
Count:1, Ant:0
Tag:1054 A334 54E1 7409 1922, CRC:2083, Disc:2003/01/21 11:50:03, Count:1,
Ant:0
#End of Notification Message
```

- XML Formatted tag lists take the form:

```
<Alien-RFID-Reader-Auto-Notification>
  <ReaderName>Spinner Reader</ReaderName>
  <ReaderType>Alien RFID Tag Reader (Class BPT / 2450Mhz)</ReaderType>
  <IPAddress>10.1.70.13</IPAddress>
  <CommandPort>23</CommandPort>
  <Time>2003/01/21 12:49:22</Time>
  <Reason>TEST MESSAGE</Reason>
<Alien-RFID-Tag-List>
  <Alien-RFID-Tag>
    <TagID>0102 0304 0506 0709 0020 2022</TagID>
    <CRC>87B4</CRC>
```

```

<DiscoveryTime>2003/01/17 11:37:01</DiscoveryTime>
<Antenna>0</Antenna>
<ReadCount>1413726</ReadCount>
</Alien-RFID-Tag>
<Alien-RFID-Tag>
<TagID>2283 1668 ADC3 E804 2939 2021</TagID>
<CRC>9FD0</CRC>
<DiscoveryTime>2003/01/19 07:01:19</DiscoveryTime>
<Antenna>0</Antenna>
<ReadCount>1</ReadCount>
</Alien-RFID-Tag>
</Alien-RFID-Tag-List>
</Alien-RFID-Reader-Auto-Notification>

```

GET MAILSERVER**SET MAILSERVER**

The MailServer command pair allow you to define an SMTP (simple mail transfer protocol) mail server. This mail server is used only when automatic notification is configured (see Notify commands) and is set to use Mail as its delivery method.

NOTE: Changes to this setting will take immediate effect.

Example	
Command	>Get MailServer
Response	>MailServer=12.34.56.78
Command	>Set MailServer=45.224.124.34
Response	>MailServer=45.224.124.34

NOTIFYNOW

The NotifyNow command instructs the reader to send out an immediate notification of its tag list to the address currently set by the NotifyAddress command.

Example	
<i>Where the reader is set to notify a Telnet address.</i>	
Command	>NotifyNow
Response	>Notification sent to Telnet
<i>Where no NotifyAddress has been set.</i>	
Command	>NotifyNow
Response	>Notification Address not set

Notify Mode Commands – Web Based

Notify Mode commands are issued via the Web page to set up and access notify mode parameters. The commands are accessed at the bottom of the Autonomous Web Page section.

Web view Notify Mode tab covers all Get and Set notify mode commands.

This web page is located at the bottom of the Autonomous Mode web page.

Allen Technology Web Server - Microsoft Internet Explorer

File Edit View Favorites Tools Help

Back Forward Stop Home Search Favorites Media Print View Source

Address http://10.1.70.86/autonomous.shtml Go

Notify Mode	Off
Notify Address	(None)
Mail Server	(Not Set)
Notify Trigger	Add
Notify Time (secs)	0
Notify Format	Text

Submit

Done Internet

COMMANDS/OPERATIONS ON WEB AUTONOMOUS MODE TAB

Command equivalents found on the Web-based “Autonomous Mode” tab are:

- Get | Set NotifyMode
- Get | Set NotifyAddress
- Get | Set MailServer
- Get | Set NotifyTrigger
- Get | Set NotifyTime
- Get | Set NotifyFormat

CHAPTER 6

Reader↔Host Protocol Extensions for Battery Powered Backscatter Tags

The Reader ↔ Host protocol detailed in Chapter 5 is a text-based communications protocol for configuring and operating the entire family of Alien Nanoscanner RFID readers. This chapter details extensions to this standard protocol that directly address the extended functionality of the Battery Powered Backscatter tags running at 2450Mhz.

Introduction

The Battery Powered Backscatter readers fully support the Class I protocol as described in chapter 5 of this document. In addition to the basic Class I command set, these readers also support extra commands especially designed to address the enhanced functionality of the Battery Powered Backscatter tags. These extra commands fall into one of five categories:

Masks

All commands aimed at Battery Powered Backscatter tags require the setting of a mask, which directs the commands only at the tags who's ID matches the mask. This mechanism allows commands to be sent to one specific tag, a selective group of tags or the whole field of tags.

Tags

The tag commands are used to explicitly communicate with a tag, to either interrogate its features and functionality, or its ID.

Memory

The Battery Powered Backscatter tags support a read-write on-board memory typically in the range of 4K bytes to 16K bytes. The memory commands described in this document allow the tag memory to be read and written in discrete blocks via RF communication.

Sensors

The Battery Powered Backscatter tags can optionally support the use of on-board sensors such as temperature or vibration sensors. The sensor commands can be used to interrogate and control the use of these on-board devices.

Logging

If a tag is equipped with one or more sensors, they can be instructed to autonomously log data to tag memory even in the absence of an RF field. The logging commands are the interface to this functionality.

Command Summaries

Command List

Mask Commands

- Get | Set Mask

Tag Commands

- Get TagID
- Get TagInfo
- Get | Set TagTime

Memory Commands

- Get | Set Memory
- Get | Set MemoryPacketSize
- Clear Memory

Sensor Commands

- Get SensorValue

Logging Commands

- Get | Set LoggingMode
- Get | Set LoggingInterval

Command List with Functions

MASK COMMANDS

Command	Description
Get Mask Set Mask	Get and Set the current mask as an array of bytes

TAG COMMANDS

Command	Description
Get TagID	Get the ID of a tag
Get TagInfo	Get information about a tag
Get TagTime Set TagTime	Get and Set the time and date on the tag's built in clock

MEMORY COMMANDS

Command	Description
Get Memory Set Memory	Get and Set data from the tag memory
Get MemoryPacketSize Set MemoryPacketSize	Get and Set the size of the memory packets used in get and set memory commands
Clear Memory	Clear the tag memory

SENSOR COMMANDS

Command	Description
Get SensorValue	Get the current value from a tag's sensor

LOGGING COMMANDS

Command	Description
Get LoggingMode Set LoggingMode	Get and Set the automatic logging mode
Get LoggingInterval Set LoggingInterval	Set and Get the interval between automatic log recording events

Using the Commands

This section describes each command, its use and the response formats.

*NOTE: Nanoscanner reader commands are case **insensitive**, that is, you can use upper or lower case, or any combination thereof, and the reader will understand the command. Capitalization of commands is used in this document and in actual command responses is solely for the purpose of readability.*

Mask Commands

Mask commands tell the reader which tag to direct further commands to.

GET MASK

SET MASK

The Get and Set Mask commands will control the current mask that the reader uses. Masks are important in both addressing tags and interrogating them. In order to interrogate a single tag, a mask must be set that will single out this tag in a field. The most commonly used mask in this case would be the entire unique tag ID. Once this mask has been set, all subsequent commands sent out from the reader will be listened to and answered only by the one tag that matches the mask ID. However there may be cases where it is useful to address a number of tags in the field at the same time. In cases such as these, a mask can be set that addresses the range of tags of interest, and reader commands can be issued to all these tags at once. The commands issued in this case can only be used to direct the tag to perform an operation such as clear its memory or set a parameter. Commands that require a response from a tag will result in unpredictable results if multiple tags are trying to answer at the same time.

Mask Example

0100 0001 0203 ...	0300 0002 3039 ...	0000 0003 4504 ...
--------------------	--------------------	--------------------

Three tags in field

Set Mask = 4, 0, 00 (4 bit mask, all zeros, starting at bit 0 from left)

All three tags will respond.

One 'set' command will affect all three tags

One 'get' command will not work as all three tags will respond at same time

Set Mask = 8, 0, 01 (8 bit mask of 01 starting at bit 0 from left)

Only first tag will respond (0100 0001 0203...)

One 'set' command will affect only one tag

One 'get' command will work as only one tag will respond

(Also equivalent in this case to Set Mask = 48, 0, 01 00 00 01 02 03 to mask to entire tag ID)

The Set Mask command takes three parameters:

- Bit Length of Mask, as a decimal number
- Bit Pointer of Mask, as a decimal number
- Array of Hex Bytes separated by white spaces

Tag IDs are referenced where bit 0 is the left most bit.

The Get Mask command takes no parameters but returns the three parameters described above.

Note:

- Setting an empty mask will address all tags currently in the RF field. i.e., “set mask=”
- The Class I command ‘get taglist’ also uses the set mask command internally. Thus the mask settings will be left in an unpredictable way after issuing any of these commands.

Example	
Command Response	>Set Mask = 8, 0, 3 >Mask (BitLen, BitPtr, XX XX) = 8, 0, 3
Command Response	>Set Mask = 16, 0, 00 03 >Mask (BitLen, BitPtr, XX XX) = 16, 0, 00 03
Command Response	>Get Mask >Mask (BitLen, BitPtr, XX XX) = 16, 0, 00 03

Tag Commands

These commands allow a unique tag (as specified by the mask commands) to be interrogated.

GET TAGID

Get TagID is used to return the ID of a unique tag specified by the mask commands. If no unique tag can be found (either the mask is incorrect or not specific enough to singulate a tag), the result will be “no tags”

Example	
Command Response	>Get TagID >1010 2033 0330 3334 DE90 EE02
Command Response	>Get TagID >No Tags

GET TAGINFO

Get TagInfo command will return information about a single tag defined using the set mask command. The information returned will be a multi-line reply containing the following elements:

- Tag Firmware Version
- Memory Size
- Sensor Type

Example	
Command	>Get TagInfo
Response	>Firmware = 1.0.0 Memory = 4096 bytes Sensor = Dallas Semiconductor Temperature Sensor

GET TAGTIME**SET TAGTIME**

Each tag has an on-board real-time clock. The time represented by this clock can be obtained or set using these commands. Times are specified by the format: yy/mm/dd hh:mm:ss

The Set TagTime command can take one special parameter 'now' which causes the reader to synchronize the tag's clock with its own.

Example	
Command	>Set TagTime = 02/12/03 16:13:00
Response	>TagTime = 02/12/03 16:13:00
Command	Set TagTime = now
Response	>TagTime = 02/12/03 16:13:00 //Current reader clock setting
Command	>Get TagTime
Response	>TagTime = 02/12/03 16:13:00

Memory Commands

Each tag has on-board memory that can be used for arbitrary user data storage, or for holding sensor logging data. These commands allow this memory to be interrogated and programmed. As always, use the 'set mask' command to identify the unique tag to communicate with.

SET MEMORY

GET MEMORY

Set and Get Memory commands allow the direct manipulation and interrogation of the tag memory. The Get Memory command will return blocks of the tag memory, and the Set Memory command will write data to the tag memory.

Get Memory takes two parameters (length, address). Parameter one is the number of bytes to get expressed as a single decimal number. Parameter two is the start address of the memory to get, expressed as a single decimal number. The maximum number of bytes that this command will return is 4Kb, i.e., 4096 bytes. The results of the Get Memory command are multiple lines of ascii data, where each line of data will represent up to 16 hexadecimal bytes of memory. A line of data may include asterisk characters instead of expected data – this indicates that the request for a particular block of memory failed (usually RF communications failure). The data can usually be extracted by repeating the command after repositioning the tag.

Set Memory takes two parameters (address, data). Parameter one is the start address of the memory to set, expressed as a single decimal number. The second parameter is an ascii string of hex bytes, up to a total of 64. This process is usually a slow process so the progress of the write operation is displayed on screen as each *memorypacket*size bytes are written.

Note: Memory is transferred to and from the tag in blocks of memory defined by the *memorypacket*size command. The smaller the packet (i.e. 1 or 2 bytes) the smaller the transmission rate but also the smaller the error rate. Likewise the higher the packet size (i.e. 16 bytes) the higher the transmission rate but also the higher the error rate in a noisy environment.

Example	
Command	>Get Memory 20, 0
Response	Memory@0000 = AF 00 A5 17 59 01 01 01 01 01 A5 0A 00 00 A5 80 Memory@0010 = 16 80 16 80
Command	>Set Memory 0, 01 02 03 04 05 06 07 08 09 0A 0B
Response	Set Memory @0 Set Memory @4 Set Memory @8 Set Memory Success

SET MEMORYPACKETSIZE
GET MEMORYPACKETSIZE

Set and Get MemoryPacketSize commands determine the number of bytes to use in each memory related transmission packet to and from the tag.

The smaller the packet (i.e. 1 or 2 bytes) the smaller the transmission rate but also the smaller the error rate. Likewise the higher the packet size (i.e. 16 bytes) the higher the transmission rate but also the higher the error rate in a noisy environment.

The default setting for this value is 16 bytes. The allowable range is 1 to 16 bytes.

Example	
Command	>Set MemoryPacketSize =4
Response	MemoryPacketSize=4
Command	>Get MemoryPacketSize
Response	MemoryPacketSize=16

CLEAR MEMORY

Clear memory will completely erase the memory of a tag.

Example	
Command	>Clear Memory
Response	Memory has been Cleared !

Sensor Commands

The sensor commands deal exclusively with a tag's onboard sensor.

GET SENSORVALUE

Get SensorValue will return the sensor's current value. If the sensor was already switched off, this command will start the sensor before returning a value, which may take up to 1 second. Sensors will automatically be switched off two seconds after this command has been completed in order to preserve the battery life of the tag.

Typically the tag has no knowledge of the type of sensor attached to it. Consequently this command simply returns the raw number as returned by the sensor. No attempt is made to process this number into a humanly understandable form.

Example	
Command	>Get SensorValue
Response	>SensorValue = 4539

Logging Commands

These commands control the automatic logging of sensor data into the tags memory. Once set up, a tag can be removed from an RF field and still have sensor data logged periodically to memory. Bringing the tag back into an RF field will allow the memory to be retrieved and examined.

GET LOGGINGMODE

SET LOGGINGMODE

The automatic, time based logging of sensor data to a tag memory is controlled by setting the logging mode on the tag.

Setting a logging mode to OFF will turn off all automatic logging. Setting a logging mode to ON will turn on the automatic logging as defined by the logging interval command. Turning on the logging mode like this will not erase the tag's memory; it will simply cause logged data to be appended to the current memory store. (Use the clear memory command to erase the memory before logging).

Example	
Command	>Get LoggingMode
Response	>LoggingMode =Off
Command	>Set LoggingMode = On
Response	>LoggingMode =On

GET LOGGINGINTERVAL
SET LOGGINGINTERVAL

When automatic logging is active, the tag will retrieve a value from the sensor and store it in tag memory on a periodic basis until the memory is full. At this point logging will cease. The periodicity of this logging is controlled by the logging interval parameter. This parameter is defined in terms of hours:mins:secs and defines the period between sensor logs.

The minimum allowable logging interval is 1 minute.

Note that the tag will sleep while not in use, and then will wake up to take a sensor reading and then sleep again. This mode of operation ensures a long battery life.

The logging interval command takes three parameters, each separated by a colon, in the form hh:mm:ss.

Example	
Command	>Get LoggingInterval
Response	>LoggingInterval = 00:01:00
Command	>Set LoggingInterval = 03:21:00
Response	>LoggingInterval = 03:21:00

CHAPTER 7

Web Based Application Examples

As part of the standard functionality of the Nanoscanner reader, the built-in web server is able to serve up a simple web based application example.

This application example can be found under the last tab on the Web pages, named "Applications." Under this tab is a simple Applet running two applications that use reader commands. These provide an interactive environment for reading tags in the field.

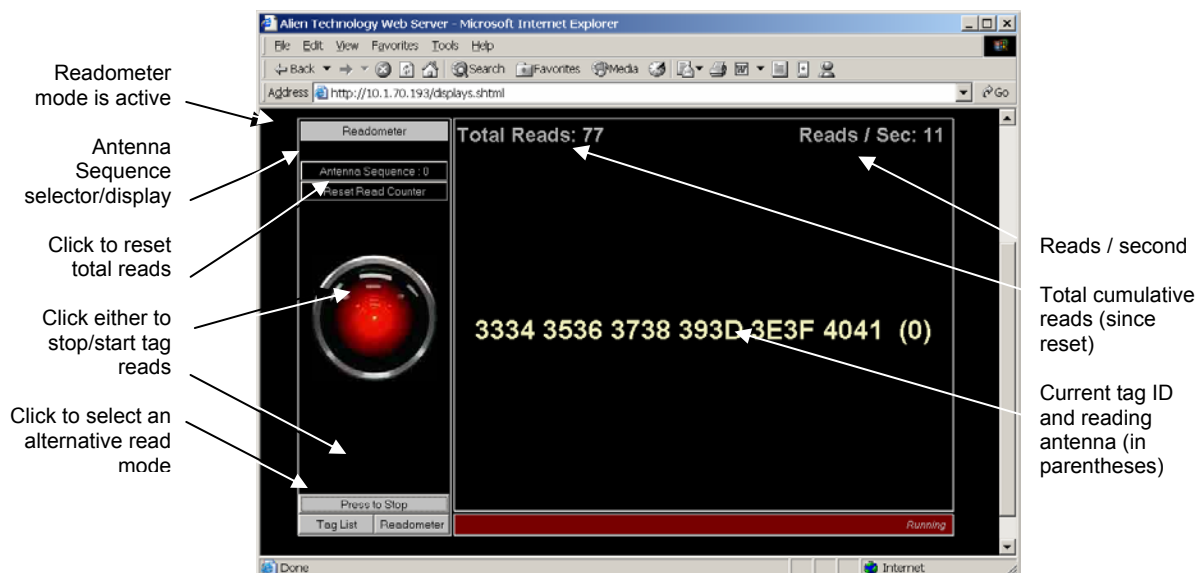
NOTE: The Java Applets are all Java 1.1 compliant applets and will work in standard Netscape and Internet Explorer browsers.

Readometer

The "readometer" graphically displays a single tag and antenna information in real time.

This screen allows the user to:

- View a single tag (as returned by the Get TagList / Set AcquireMode= Global Scroll command) and the reading antenna
- View a cumulative and dynamic number of reads since starting or resetting this value
- View a dynamic Reads per Second value for the current tag
- Change the antenna sequence (see "General Commands")
- Reset the Total Reads counter
- Stop/start the tag reading operation
- Switch to a different display mode

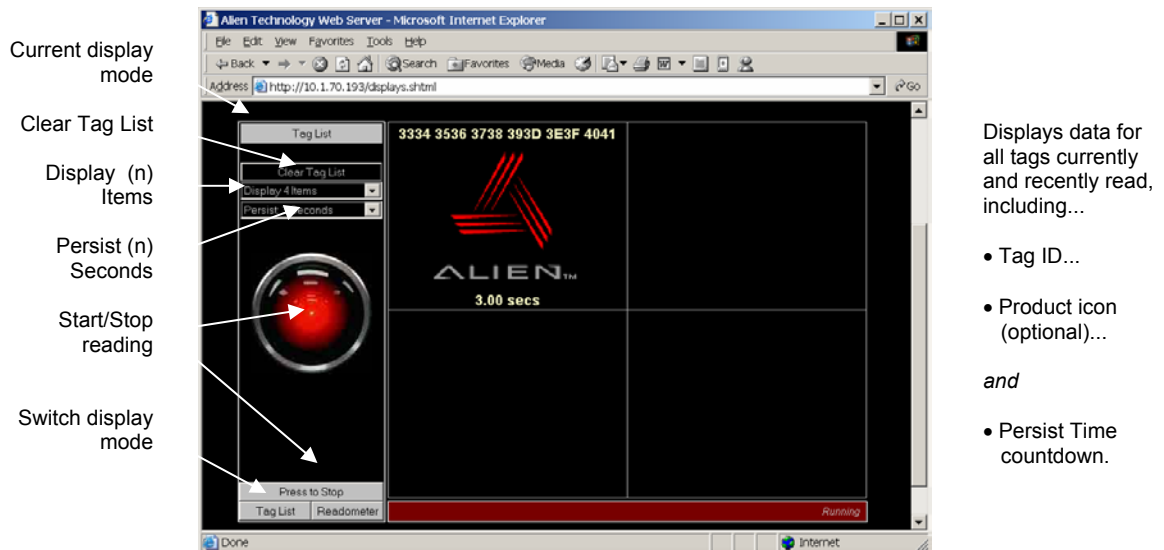


Tag List

The Tag List applet provides a graphical view of the reader's current tag list.

This screen allows the user to:

- View tags that have been read and acquired by the reader most recently (typically using get tagList / set acquireMode = Inventory)
- View the Persist Time countdown for each tag after it is read
- Clear the tag list manually
- Change the number of cells in the display grid via pulldown menu
- Change the Persist Time via pulldown menu
- Start/stop tag reading
- Switch to a different tag display mode.



Optimize Reader Settings

On each of the Tag List and Readometer screens is a small checkbox option entitled 'Optimize Reader Settings', which by default is checked (a tick mark is present).

When checked this tells the applet to optimize the reader settings *the next time* one of the two applications is started (i.e., the HAL eye turns to red). The following optimization settings are made to the reader depending on the application that is started:

Readometer Settings

When the Readometer is started with the optimize option checked, the following commands are issued to the reader to put it into an optimized state for readometer readings.

- Set persisttime = 0
- Set TagListFormat = Text
- AutoModeReset
- Set AcquireMode = Global Scroll

When running, the readometer performs repeated bursts of 'get taglist 25' followed by a 200 ms pause. The timing results displayed on the screen are calculated based on each 'get taglist 25' command. Thus for optimal timings, Global Scroll is used for the Acquire Mode.

The auto mode is reset, and left off; the readometer screen always works in foreground mode.

When the optimize option is turned off, only one command is issued to the reader when readometer is started:

- Set TagListFormat = Text

Tag List Settings

When the Tag List is started with the optimize option checked, the following commands are issued to the reader to put it into an optimized state for tag list readings.

- Set persisttime = -1
- Set TagListFormat = Text
- AutoModeReset
- Set AcquireMode = Inventory

When running, the tag list switches on auto mode, forcing the reader into autonomous acquisitions as fast as it can. The optimized acquisition mode is Inventory and the persist time is -1, telling the reader to build up a tag list until next interrogated. While the reader is building its tag list, the applet periodically

(~every 250ms) issues a 'get taglist' command, forcing the full tag list to be returned and the reader to reset its internal tag list.

When the optimize option is turned off, only one command is issued to the reader when tag list is started:

- Set TagListFormat = Text

Advanced Tag List Options

By turning off the optimization check box and running tag list, the reader can be set up manually to perform different actions:

RUNNING TAG LIST USING GLOBAL SCROLL AS THE ACQUIRE MODE

In some instances it is desirable to set the acquire mode to Global Scroll. By default, with the tag list optimize checkbox on, the tag list will set the reader into Inventory mode. However with the optimize checkbox off, the following manual settings can be made:

- Set AcquireMode = Global Scroll

The next time the tag list is started, it will run using the new settings.

RUNNING TAG LIST IN DUTY CYCLE MODE

In some instances it is desirable to run the reader in duty cycle mode, where instead of reading tags without a break, a timed pause is inserted into the read-cycle. By default, with the optimize checkbox on, the Tag List will set the reader into full time acquire mode. However with the optimize checkbox off, the following manual settings can be made:

- Set AutoStopTimer = 500
- Set AutoTruePause = 200
- Set AutoFalsePause = 200

The next time the Tag List is started, it will run using the new settings, forcing it into a cycle of reading tags for 500ms, followed by a 200ms pause regardless of whether tags were found or not. For further details on these commands and other autonomous mode options, please refer to the autonomous mode overview in this document.