

WiFi Adapter Manual

1. Introduction

WiFi Adapter is a device for SENA WIFI2.4G that charges and provides auto firmware upgrade.

WiFi Adapter can automatically connect to the router through the mobile app, automatically download the latest firmware available for SENA Device, and can always upgrade to the latest firmware through comparing firmware version when the user plugs SENA Device into the USB port to charge.

2. WiFi Adapter features

- Supports WiFi related IEEE 802.11b, IEEE 802.11g, IEEE 802.11n
- Smartphone App for iPhone and Android
- Firmware upgradeable

3. Contents

- Wifi Adapter

4. Product description





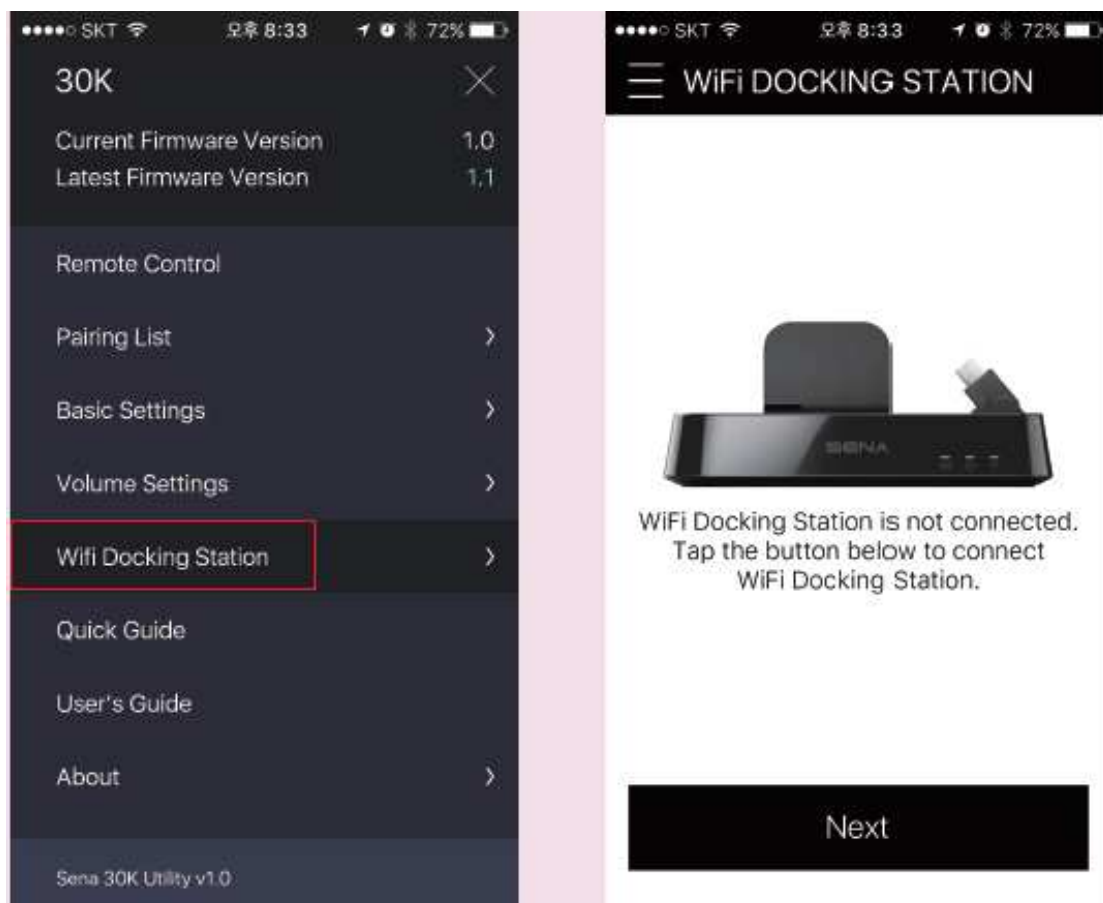
5. Getting started

a. Power On:

Insert the USB port into the charger and insert the Micro USB Port into the “USB power port”

b. Connecting to WiFi

1. Open the mobile app



2. Connect to WiFi Docking



3. Setting WiFi Docking Station configuration



4. Select the WiFi router to connect to.



5. Enter the password of the selected WiFi router and click "Connect"

The screenshot shows a mobile application interface for a 'WiFi DOCKING STATION'. At the top, a status bar displays 'SKT', signal strength, time '오후 8:33', and battery level '72%'. Below the status bar is a dark header with a back arrow and the text 'WiFi DOCKING STATION'. The main content area is white and contains the text 'Select Your WiFi Network'. Below this, it says 'Enter the password for "Sena_3F"'. There is a horizontal line, followed by the label 'Password' and a field of ten black dots. Another horizontal line follows. At the bottom, there is a red link that says 'Choose a Different Network' and a large black button with the text 'Connect'.

●●●● SKT 오후 8:33 72%

← WiFi DOCKING STATION

Select Your WiFi Network

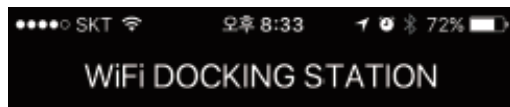
Enter the password for "Sena_3F"

Password ●●●●●●●●●●

[Choose a Different Network](#)

Connect

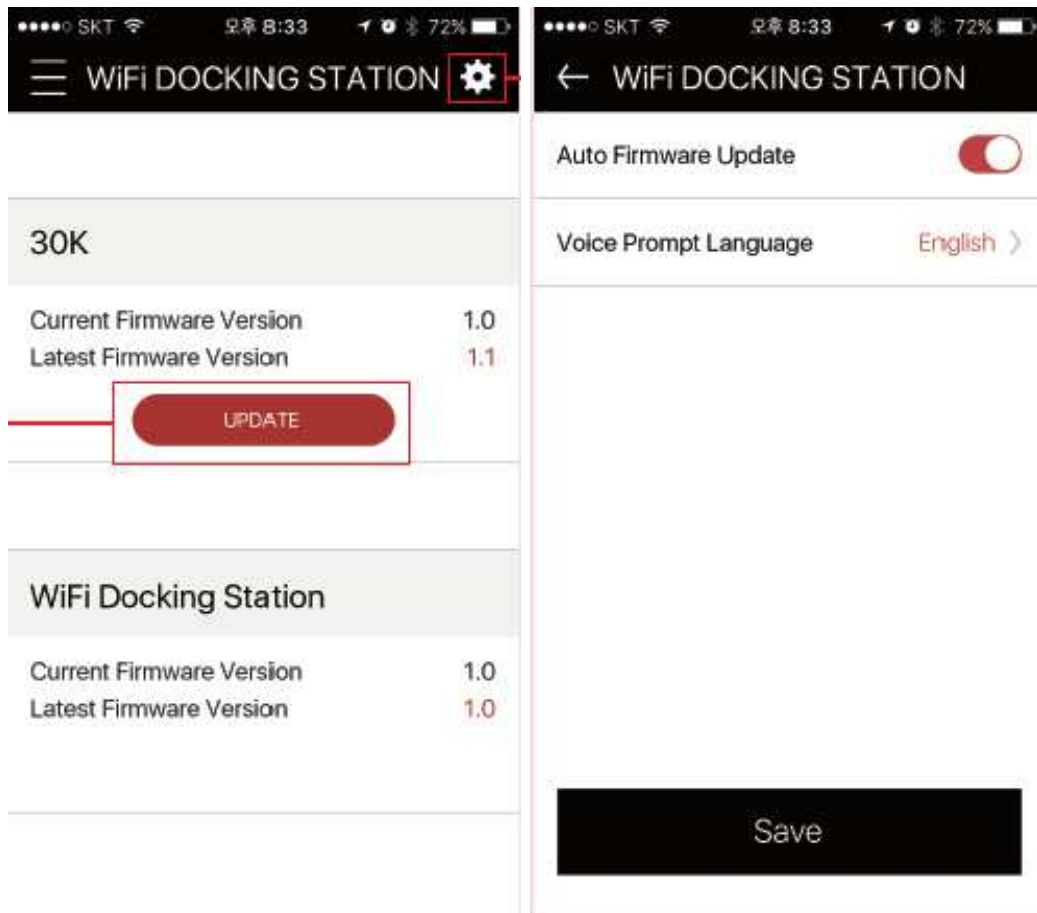
6. WiFi Adapter is connecting to the router.
7. Click "Setup Complete" when connected



Connected to WiFi Network

Setup Complete

-
8. After following these steps, WiFi Adapter should be connected to WiFi. "WiFi status" LED will show blue light if the WiFi router is connected successful and show red light if there has been a failure to connect.
 9. To change the router connection, repeat the steps above.
 10. You can update Sena devices such as 30K manually and update WiFi Docking Station



c. Charging SENA Bluetooth device

Plug in the Micro USB to sena Bluetooth device to charge the device. The “Charging status LED” will show red light while charging and turn blue when the device is fully charged.

d. Upgrading Firmware

Firmware will be upgraded automatically while charging 30K through checking the firmware version and downloading the latest firmware available.

“Firmware upgrade status” LED will show blue light when upgrade finished and blink while firmware is upgrading.

FCC Warning

NOTE: This equipment has been tested and found to comply with the limits for a Class B digital device, pursuant to part 15 of the FCC Rules. These limits are designed to provide reasonable protection against harmful interference in a residential installation. This equipment generates, uses and can radiate radio frequency energy and, if not installed and used in accordance with the instructions, may cause harmful interference to radio communications. However, there is no guarantee that interference will not occur in a particular installation. If this equipment does cause harmful interference to radio or television

reception, which can be determined by turning the equipment off and on, the user is encouraged to try to correct the interference by one or more of the following measures:

- Reorient or relocate the receiving antenna.
- Increase the separation between the equipment and receiver.
- Connect the equipment into an outlet on a circuit different from that to which the receiver is connected.

—Consult the dealer or an experienced radio/TV technician for help.

To maintain compliance with FCC's RF Exposure guidelines, This equipment should be installed and operated with minimum distance between 20cm the radiator your body: Use only the supplied antenna.

This device complies with part 15 of the FCC rules. Operation is subject to the following two conditions:

- (1) this device may not cause harmful interference, and
- (2) this device must accept any interference received, including interference that may cause undesired operation.

Changes or modifications to this unit not expressly approved by the party responsible for compliance could void the user's authority to operate the equipment.

IC Warning

This device complies with Industry Canada licence-exempt RSS standard(s). Operation is subject to the following two conditions:

- (1) this device may not cause interference, and
- (2) this device must accept any interference, including interference that may cause undesired operation of the device.

Le présent appareil est conforme aux CNR d'Industrie Canada applicables aux appareils radio exempts de licence. L'exploitation est autorisée aux deux conditions suivantes :

- (1) l'appareil ne doit pas produire de brouillage, et
- (2) l'utilisateur de l'appareil doit accepter tout brouillage radioélectrique subi, même si le brouillage est susceptible d'en compromettre le fonctionnement.

Pour maintenir la conformité avec les lignes directrices de l'exposition RF de FCC, cet équipement devrait être installé et exploité à une distance minimale de 20 cm le radiateur de votre corps : utilisez seulement l'antenne fournie.

Manufacturer's Name: SENA TECHNOLOGIES.Inc

Product Name: WiFi Adapter

Trade Mark: SENA

Model number: SP126

Operating Temperature: -10°C to 40°C



This device is in compliance with the essential requirements and other relevant provisions of Directive 2014/53/EU. All essential radio test suites have been carried out.

Detailed DOC file see attachment

- ☒ The device complies with RF specifications when the device used at 20cm from your body.
- ☒ The product shall only be connected to a USB interface of version USB2.0

Care for the environment! Must not be discarded with household waste!

RF Secification:

Function	Operation Frequency	Max RF outputpower:	Limit
WIFI 802.11b/g/n(HT20)	802.11b/g/n(20MHz): 2412~2472MHz;	802.11b: 17.08dBm; 802.11g: 17.21dBm; 802.11n20: 16.49dBm;	20 dBm.

This product can be used across EU member states.