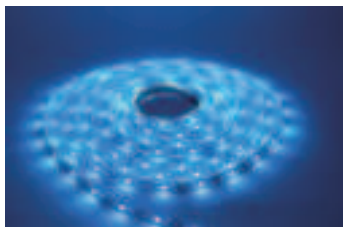


# User Manual

Bluetooth LED Strip Lights

D43209



FCC-ID:2A7WU-42113

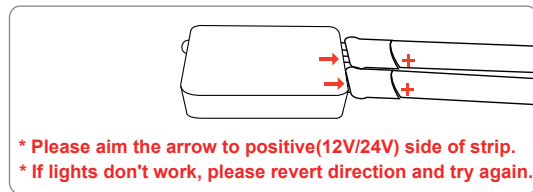
SHENZHEN DAYBETTER OPTO-ELECTRONICS CO.,LTD

v1.1

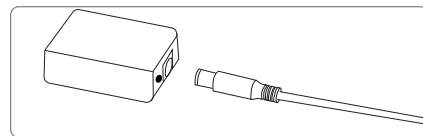


## How to connect

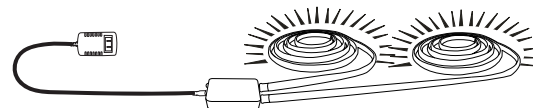
Step1: Connect the LED Controller with LED Light Strip.



Step2: Connect the LED Controller with power supply.



Step3: Plug in the power supply.



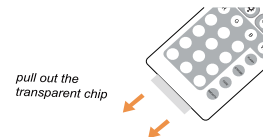
## WARNING

Test the lights before installing.  
 Unroll the light strips before power on. Avoid heat damage the strip.

## How to install

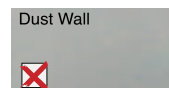
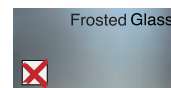
Please read following tips carefully before sticking.

- Pull out the transparent chip and use remote to test lights before sticking.



Please pull out the transparent chip from the bottom of the IR remote to ensure that the battery is powered properly.

- Choose smooth, dry, clean surface. Avoid dusty or rough surface.

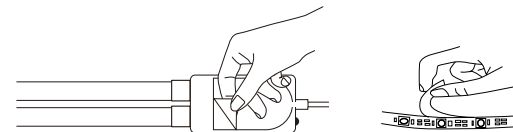


- Clean the surface and dry out before sticking.

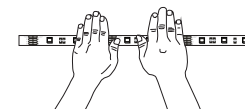


- Plan routing of the strip. Better start from the controller box.

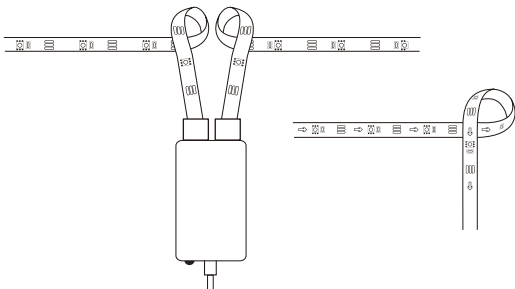
- Peel off the protective film and stick.



- Press the whole strips repeatedly with force on blank area.



■ Ensure large angle when changing direction of strip, to protect the LEDs.



## Remote Control

1. One IR remote is included in package.
2. Please pull out the plastic chip in bottom first to power on the remote.
3. You can insert the chip back when unused to get longer battery life.
4. Aim to the controller directly within 6 meters to ensure communication.
5. There are keys for "ON/OFF/Brightness up/Brightness down/Static colors/Dynamic Modes" and so on. Just try it.

## APP control

1. Scan the QR code on the controller box and install the APP on your phone. Google Play and Apple app store also available.
2. Turn on the Bluetooth on your phone.
3. Open the APP, tap the "+" icon in the top right corner and search new device.
4. APP will show the device found, just add it.
5. Tap the device icon to enter control panel.

## Attention

1. Use the product with provided power adapter and control only the box.
2. Do NOT extend more strips to avoid overload which is unsafe.
3. Avoid this product use in a humid environment.
4. Please turn off the power and unplug the adapter if the strip light will not be used for a long time.

## Trouble Shooting

### 1. APP can not find the device.

Make sure the phone bluetooth is on.  
Allow the permissions of APP. APP needs them to connect the device.  
Check the strip light is on. Or use remote control to check light is working.  
Kill APP, turn off bluetooth and turn on bluetooth again, then start APP to add device again. Ensure the phone is within 1m/3.28ft of the product without obstructions when connecting. Your phone may be incompatible with the APP. Try another phone.

### 2. All lights don't work.

Check power is on.  
Press ON and press "brightness up" multi times on remote.  
Connect APP and turn on light and turn up brightness.  
Reinstall all parts.

### 3. Some light beads keep off or fail working.

Contact our support team.

## Contact us

If you have any questions or product issues, please contact seller via the email on the package or get the product support on the order page in your purchasing account.  
All messages will be replied within 24 hours.

### FCC Caution

This device complies with part 15 of the FCC Rules. Operation is subject to the following two conditions: (1) This device may not cause harmful interference, and (2) this device must accept any interference received, including interference that may cause undesired operation.

Any Changes or modifications not expressly approved by the party responsible for compliance could void the user's authority to operate the equipment.

**Note:** This equipment has been tested and found to comply with the limits for a Class B digital device, pursuant to part 15 of the FCC Rules. These limits are designed to provide reasonable protection against harmful interference in a residential installation. This equipment generates uses and can radiate radio frequency energy and, if not installed and used in accordance with the instructions, may cause harmful interference to radio communications. However, there is no guarantee that interference will not occur in a particular installation. If this equipment does cause harmful interference to radio or television reception, which can be determined by turning the equipment off and on, the user is encouraged to try to correct the interference by one or more of the following measures:

- Reorient or relocate the receiving antenna.
- Increase the separation between the equipment and receiver.
- Connect the equipment into an outlet on a circuit different from that to which the receiver is connected.
- Consult the dealer or an experienced radio/TV technician for help.

This equipment complies with FCC radiation exposure limits set forth for an uncontrolled environment. This equipment should be installed and operated with minimum distance 20cm between the radiator & your body.