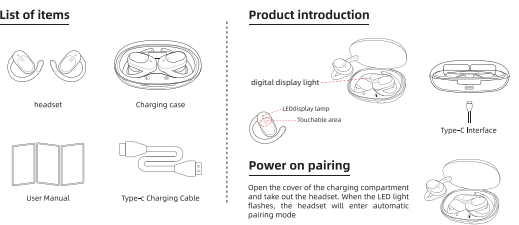


135mm*65mm

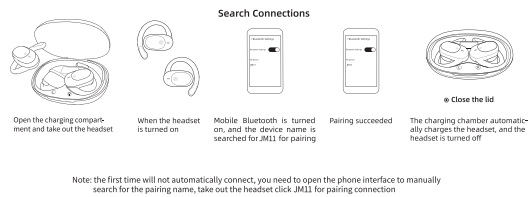
正面

反面

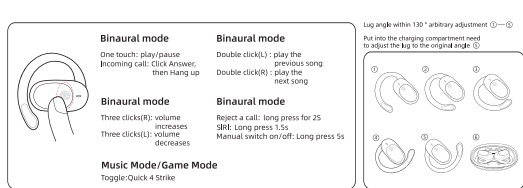
Quick Use Guide
快速使用指南



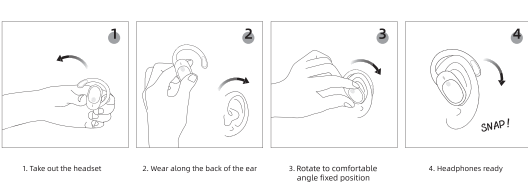
Bluetooth pairing



Operation



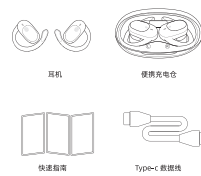
Headset wearing



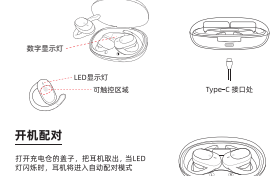
▲ 无线电发射设备型号核准代码印刷在产品外壳机身的铭牌上, 拆开包装在样机表面可查看。



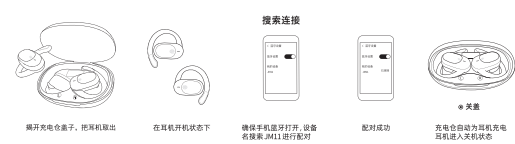
物品清单



产品介绍



蓝牙配对



注:首次不会自动连接,需打开手机界面手动搜索配对名,取出耳机点击 JM11 进行配对连接

使用操作



耳机佩戴



产品参数

产品名称	JM11	耳机充电时长	1.5h
蓝牙版本	蓝牙5.3	蓝牙连接传输距离	10M
耳机电池	40MAH	待机时间	120h
充电仓电池	300MAH		
充电接口	Type-C接口	音乐时间	5H

保修说明

尊敬的客户，你好！
 承蒙惠顾本公司产品，为了保证你的利益，请你在购买本产品后，仔细阅读说明书以及以下内容：（下列情况不属于保修范围，本公司可提供有偿服务，敬请注意）

1. 未按说明书操作，使用、保管，导致本产品故障和损坏。
2. 擅自拆卸，损伤产品包装以及零件。
3. 擅自改动出厂设置和软件程序。
4. 意外因素造成本产品机械损坏，如输入不匹配的电压，高温，进水，破坏，产品严重氧化或生锈等。
5. 因不可抗力，如地震、火灾、水灾、雷击等导致的故障和损坏。

注意事项

- 长时间使用耳机可能会导致听力损害，请合理安排使用时间。
- 请勿使用不匹配充电器的电压电流充电。
- 请勿拆卸、篡改或改装本产品。
- 请勿自行拆卸、修理或改装本产品。
- 请勿使用化学溶剂清洁本产品。
- 如加速去壳充电，耳机没有反应
 - 1. 给充电仓也是否有电，如没有电需给充电仓充电。
 - 2. 耳机对不上充电位置，则是耳机方向的问题。
 则需手动按一下恢复原位，让充电指示灯持续合盖。

Product Parameters

Product name	JM11	Headphone charging time
Bluetooth version	Bluetooth5.3	
Headset battery	40MAH	Bluetooth transmission distance
Charging chamber battery	300MAH	
		Standby time
Charging interface	Type-C connector	Music time

Matters Needing Attention

- Long time use of earphones may cause hearing damage, please arrange your time reasonably
- Do not use unqualified chargers and high voltage current chargers
- Do not throw to avoid product damage due to falling
- Do not disassemble, repair or modify this product by yourself
- Do not use chemical solvents to wipe this product

WARRANTY

Dear customer, hello!

Thank you for patronizing our products. To ensure your interests, please read the instructions carefully after purchasing this product And the following: (The following situations are not covered by the warranty, and our company can provide paid services, please note)

1. Failure to operate, use, and store the product in accordance with the instructions may result in failure and damage to the product.
2. Unauthorized profit, illegal use, or unauthorized packaging and barcode.
3. Unauthorized modification of factory settings and disassembly for repair.
4. Accidental factors or man-made damage to the product, such as input of unqualified voltage, high temperature, water ingress, damage The product is severely oxidized or rusted.
5. Failures and damages caused by force majeure, such as earthquakes, fires, lightning strikes, etc.

- If you put in the charging compartment, the headset does not respond
 1. Check whether the charging compartment has electricity.
 - If there is no electricity, you need to charge the charging compartment.
 2. If the headset is not in the charging position, the headset is artificially bent.
 - If the headset is not in the charging position, the headset is artificially bent, so you need to break it manually to restore the original position and fix it with the charging handle.

FCC Requirement

changes or modifications not expressly approved by the party responsible for compliance could void the user's authority to operate the equipment.

This device complies with Part 15 of the FCC Rules. Operation is subject to the following two conditions:

- (1) this device may not cause harmful interference, and
- (2) this device must accept any interference received, including interference that may cause undesired operation.

Note: This equipment has been tested and found to comply with the limits for a Class B digital device, pursuant to Part 15 of the FCC Rules. These limits are designed to provide reasonable protection against harmful interference in a residential installation. This equipment generates, uses, and can radiate radio frequency energy, and if not installed and used in accordance with the instructions, may cause harmful interference to radio communications. However, there is no guarantee that interference will not occur in a particular installation. If this equipment does cause harmful interference to radio or television reception, which can be determined by turning the equipment off and on, the user is encouraged to try to correct the interference by one or more of the following measures:

- Reorient or relocate the receiving antenna.
- Increase the separation between the equipment and receiver.
- Connect the equipment into an outlet on a circuit different from that to which the receiver is connected.
- Consult the dealer or an experienced radio/TV technician for help.